

TPS63900 1.8V 到 5.5V, 75nA I_Q 降压/升压转换器, 具有输入电流限制和 DVS

1 特性

- 输入电压范围：1.8V 至 5.5V
- 输出电压范围：1.8V 至 5V (100mV 阶跃)
 - 可使用外部电阻器进行编程
 - SEL 引脚用于在两个输出电压预设之间切换
- $V_I \geq 2.0V$ 、 $V_O = 3.3V$ 时, 输出电流 > 400mA (峰值开关电流限制典型值 1.45A)
 - 可堆叠：并联多个器件以获得更高的输出电流
- 负载电流为 10 μ A 时, 效率 > 90%
 - 静态电流为 75nA
 - 60nA 关断电流
- 单模式运行
 - 无需在降压、降压/升压和升压模式之间转换
 - 低输出波纹
 - 出色的瞬态性能
- 安全、可靠运行的特性
 - 集成软启动
 - 可编程输入电流限制, 具有八个设置 (1mA 至 100mA 和无限制)
 - 输出短路和过热保护
- 21mm² 的微小解决方案尺寸
 - 小型 2.2 μ H 电感器, 单个 22 μ F 输出电容器
 - 10 引脚、2.5mm × 2.5mm、0.5mm 间距 WSON 封装

2 应用

- [智能仪表和传感器节点](#)
- [电子智能锁](#)
- [医疗传感器贴片和患者监护仪](#)
- [可穿戴电子产品](#)
- [资产跟踪](#)
- [工业物联网 \(智能传感器 \) / 窄带物联网](#)

3 说明

TPS63900 器件是一款具有超低静态电流 (典型值为 75nA) 的高效同步降压/升压转换器。该器件具有 32 个用户可编程的输出电压设置, 范围为 1.8V 至 5V。

动态电压调节特性使各项应用可于运行期间在两个输出电压之间进行切换；例如, 在待机运行期间, 可通过降低系统电源电压来降低功耗。

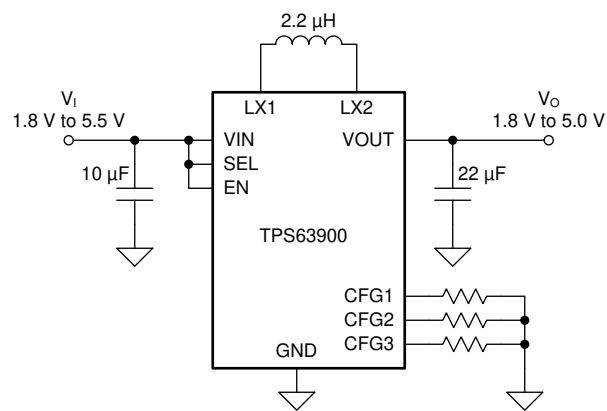
凭借其宽电源电压范围和可编程的输入电流限制 (1mA 至 100 mA 和无限制), 该器件非常适合与 3 节碱性电池、1 节锂二氧化锰 (Li-MnO₂) 或 1 节锂亚硫酸酐 (Li-SOCl₂) 等各种一次电池以及二次电池搭配使用。

高输出电流功能支持 sub-1GHz、BLE、LoRa、wM-Bus 和 NB-IoT 等常用射频标准。

器件信息

| 器件型号 ⁽¹⁾ | 封装 | 封装尺寸 (标称值) |
|---------------------|-----------|---------------|
| TPS63900 | WSON (10) | 2.5mm × 2.5mm |

(1) 如需了解所有可用封装, 请参阅数据表末尾的可订购产品附录。



简化版原理图



Table of Contents

| | | | |
|--|----------|--|-----------|
| 1 特性 | 1 | 8 Application and Implementation | 18 |
| 2 应用 | 1 | 8.1 Application Information..... | 18 |
| 3 说明 | 1 | 8.2 Typical Application..... | 18 |
| 4 Revision History | 2 | 9 Power Supply Recommendations | 30 |
| 5 Pin Configuration and Functions | 3 | 10 Layout | 31 |
| 6 Specifications | 4 | 10.1 Layout Guidelines..... | 31 |
| 6.1 Absolute Maximum Ratings | 4 | 10.2 Layout Example..... | 31 |
| 6.2 ESD Ratings | 4 | 11 Device and Documentation Support | 32 |
| 6.3 Recommended Operating Conditions | 4 | 11.1 Device Support..... | 32 |
| 6.4 Thermal Information | 4 | 11.2 Documentation Support..... | 32 |
| 6.5 Electrical Characteristics | 5 | 11.3 接收文档更新通知..... | 32 |
| 6.6 Typical Characteristics..... | 7 | 11.4 支持资源..... | 32 |
| 7 Detailed Description | 8 | 11.5 Trademarks..... | 32 |
| 7.1 Overview..... | 8 | 11.6 静电放电警告..... | 32 |
| 7.2 Functional Block Diagram..... | 8 | 11.7 术语表..... | 32 |
| 7.3 Feature Description..... | 8 | 12 Mechanical, Packaging, and Orderable Information | 32 |
| 7.4 Device Functional Modes..... | 17 | | |

4 Revision History

注：以前版本的页码可能与当前版本的页码不同

| Changes from Revision C (September 2020) to Revision D (October 2020) | Page |
|--|-------------|
| • 将器件状态从“预告信息”更改为“量产数据” | 1 |

5 Pin Configuration and Functions

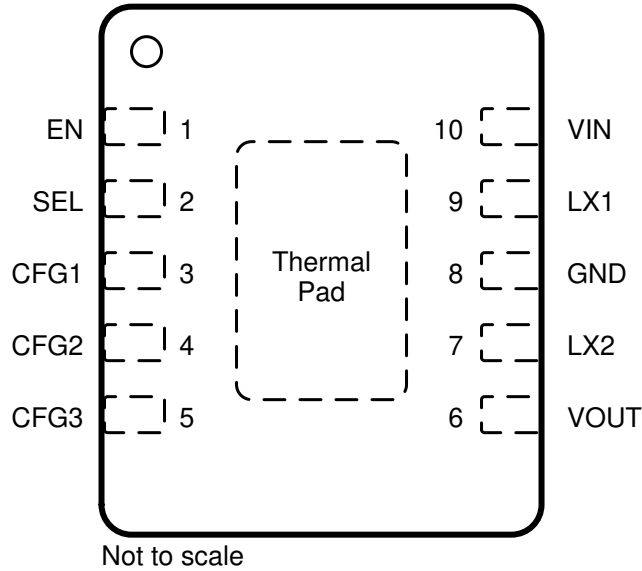


图 5-1. 10-Pin WSON DSK Package (Top View)

表 5-1. Pin Functions

| PIN | | I/O | DESCRIPTION |
|-----|-------------|-----|---|
| NO. | NAME | | |
| 1 | EN | I | Device enable. A high level applied to this pin enables the device and a low level disables it. It must not be left open. |
| 2 | SEL | I | Output voltage select. Selects $V_{O(2)}$ when a high level is applied to this pin. Selects $V_{O(1)}$ when a low level is applied to this pin. It must not be left open. |
| 3 | CFG1 | I | Configuration pin 1. Connect a resistor between this pin and ground to set $V_{O(2)}$ and input current limit, must not be left open. |
| 4 | CFG2 | I | Configuration pin 2. Connect a resistor between this pin and ground to set $V_{O(2)}$ and input current limit. Must not be left open. |
| 5 | CFG3 | I | Configuration pin 3. Connect a resistor between this pin and ground to set $V_{O(1)}$. Must not be left open. |
| 6 | VOUT | — | Output voltage |
| 7 | LX2 | — | Switching node of the boost stage |
| 8 | GND | — | Ground |
| 9 | LX1 | — | Switching node of the buck stage |
| 10 | VIN | — | Supply voltage |
| — | Thermal Pad | — | Connect this pin to ground for correct operation. |

6 Specifications

6.1 Absolute Maximum Ratings

over operating junction temperature range (unless otherwise noted)⁽¹⁾

| | | MIN | MAX | UNIT |
|------------------|---|-------|-----|------|
| V _I | Input voltage (VIN, LX1, LX2, VOUT, EN, CFG1, CFG2, CFG3, SEL) ⁽²⁾ | - 0.3 | 5.9 | V |
| T _J | Operating junction temperature | - 40 | 150 | °C |
| T _{stg} | Storage temperature | - 65 | 150 | °C |

- (1) Stresses beyond those listed under *Absolute Maximum Ratings* may cause permanent damage to the device. These are stress ratings only, which do not imply functional operation of the device at these or any other conditions beyond those indicated under *Recommended Operating Conditions*. Exposure to absolute-maximum-rated conditions for extended periods may affect device reliability.
- (2) All voltage values are with respect to network ground terminal, unless otherwise noted.

6.2 ESD Ratings

| | | | VALUE | UNIT |
|--------------------|-------------------------|--|-------|------|
| V _(ESD) | Electrostatic discharge | Human body model (HBM), per ANSI/ESDA/JEDEC JS-001 ⁽¹⁾ | ±2000 | V |
| | | Charged-device model (CDM), per JEDEC specification JESD22-C101 or ANSI/ESDA/JEDEC JS-002 ⁽²⁾ | ±750 | |

- (1) JEDEC document JEP155 states that 500-V HBM allows safe manufacturing with a standard ESD control process.
- (2) JEDEC document JEP157 states that 250-V CDM allows safe manufacturing with a standard ESD control process.

6.3 Recommended Operating Conditions

over operating free-air temperature range (unless otherwise noted)

| | | MIN | NOM | MAX | UNIT |
|--------------------|---|---------------------------|-----|-----|------|
| V _I | Supply voltage | 1.8 | | 5.5 | V |
| V _O | Output voltage | 1.8 | | 5.0 | V |
| I _O | Output current (V _I ≥ 2.0 V, V _O = 3.6 V) | | | 0.4 | A |
| C _I | Input capacitance (V _I = 2.5 V to 5 V, V _O = 3.3 V, I _O = 0.4 A) ⁽¹⁾ | 5 | | | μF |
| C _O | Output capacitance (V _I = 2.5 V to 5 V, V _O = 3.3 V, I _O = 0.4 A) ⁽¹⁾ | 10 | | | μF |
| C _(CFG) | Capacitance (CFG1, CFG2, CFG3) | | | 10 | pF |
| L | Inductance | | 2.2 | | μH |
| I _{SAT} | Inductor saturation current rating | Unlimited current setting | 2 | | A |
| | | ≤ 100-mA current settings | 1 | | |
| T _A | Operating ambient temperature | - 40 | | 85 | °C |
| T _J | Operating junction temperature | - 40 | | 125 | °C |

- (1) Effective capacitance after DC bias effects have been considered.

6.4 Thermal Information

| THERMAL METRIC ⁽¹⁾ | | TPS63900 | UNIT |
|-------------------------------|--|--------------------|------|
| | | DSK Package (WSON) | |
| | | 10 PINS | |
| R _{θJA} | Junction-to-ambient thermal resistance | 64.6 | °C/W |
| R _{θJC(top)} | Junction-to-case (top) thermal resistance | 62.3 | °C/W |
| R _{θJB} | Junction-to-board thermal resistance | 31.1 | °C/W |
| ψ _{JT} | Junction-to-top characterization parameter | 1.6 | °C/W |
| ψ _{JB} | Junction-to-board characterization parameter | 31.0 | °C/W |

| THERMAL METRIC ⁽¹⁾ | | TPS63900 | | UNIT |
|-------------------------------|--|--------------------|--|------|
| | | DSK Package (WSON) | | |
| | | 10 PINS | | |
| $R_{\theta JC(bot)}$ | Junction-to-case (bottom) thermal resistance | 10.0 | | °C/W |

(1) For more information about traditional and new thermal metrics, see the *Semiconductor and IC Package Thermal Metrics* application report, [SPRA953](#).

6.5 Electrical Characteristics

Over operating junction temperature range and recommended supply voltage range (unless otherwise noted). Typical values are at $V_I = 3.0\text{ V}$, $V_O = 2.5\text{ V}$ and $T_J = 25^\circ\text{C}$ (unless otherwise noted).

| PARAMETER | | TEST CONDITIONS | MIN | TYP | MAX | UNIT |
|----------------------|--|---|--|-------|------|------|
| SUPPLY | | | | | | |
| | Quiescent current into VIN | $V_{(EN)} = 3\text{ V}$, no load, not switching, "unlimited" current setting | | 0.075 | 1 | μA |
| | Shutdown current into VIN | $V_{(EN)} = 0\text{ V}$ | | 60 | | nA |
| $V_{IT+(UVLO)}$ | Positive-going UVLO threshold voltage | | 1.73 | 1.75 | 1.77 | V |
| $V_{hys(UVLO)}$ | UVLO threshold voltage hysteresis | | 90 | 100 | 110 | mV |
| $V_{IT+(POR)}$ | Positive-going POR threshold voltage | | 1.37 | | 1.74 | V |
| I/O SIGNALS | | | | | | |
| V_{IH} | High-level input voltage (EN, SEL) | | | | 1.2 | V |
| V_{IL} | Low-level input voltage (EN, SEL) | | 0.4 | | | V |
| | Input current (EN, SEL) | $V_{(EN)}, V_{(SEL)} = 1.8\text{ V}$ or 0 V , $T_J = 25^\circ\text{C}$ | | ±1 | ±10 | nA |
| POWER SWITCH | | | | | | |
| $r_{DS(on)}$ | On-state resistance | Q1 | $V_I = 3\text{ V}$, $V_O = 5\text{ V}$, test current = 1 A | | 155 | mΩ |
| | | Q2 | $V_I = 3\text{ V}$, $V_O = 3\text{ V}$, test current = 1 A | | 110 | |
| | | Q3 | $V_I = 3\text{ V}$, $V_O = 3\text{ V}$, test current = 1 A | | 110 | |
| | | Q4 | $V_I = 5\text{ V}$, $V_O = 3\text{ V}$, test current = 1 A | | 155 | |
| CURRENT LIMIT | | | | | | |
| | Peak current limit during Startup (Q1) | $V_I = 3.6\text{ V}$, unlimited current limit setting | 0.35 | | 0.83 | A |
| | Peak current limit (Q1) | $V_I = 1.8\text{ V}$, $V_O = 3.6\text{ V}$, unlimited current limit setting | 1.33 | 1.45 | 1.6 | A |
| | | $V_I = 3.6\text{ V}$, $V_O = 3.3\text{ V}$, 100-mA current limit setting | 0.15 | 0.29 | 0.51 | |
| | Average input current limit | $T_J = -40^\circ\text{C}$ to 85°C | 1-mA setting | | 1 | mA |
| | | | 2.5-mA setting | | 2.5 | |
| | | | 5-mA setting | | 5 | |
| | | | 10-mA setting | | 10 | |
| | | | 25-mA setting | | 25 | |
| | | | 50-mA setting | | 50 | |
| | 100-mA setting | | | 100 | | |
| OUTPUT | | | | | | |
| | Output voltage DC accuracy | $I_O = 1\text{ mA}$, $C_{O(eff)} = 10\text{ μF}$, $L_{(eff)} = 2.2\text{ μH}$ | | | ±1.5 | % |
| CONTROL | | | | | | |
| | Internal reference resistor | | | 33 | | kΩ |

Over operating junction temperature range and recommended supply voltage range (unless otherwise noted). Typical values are at $V_I = 3.0\text{ V}$, $V_O = 2.5\text{ V}$ and $T_J = 25^\circ\text{C}$ (unless otherwise noted).

| PARAMETER | | TEST CONDITIONS | MIN | TYP | MAX | UNIT |
|----------------------------|--|---|------|-------|-----|------------------|
| R _{CFG} | R2D setting #0 | | | 0 | 0.1 | k Ω |
| | R2D setting #1 | | - 3% | 0.511 | +3% | |
| | R2D setting #2 | | - 3% | 1.15 | +3% | |
| | R2D setting #3 | | - 3% | 1.87 | +3% | |
| | R2D setting #4 | | - 3% | 2.74 | +3% | |
| | R2D setting #5 | | - 3% | 3.83 | +3% | |
| | R2D setting #6 | | - 3% | 5.11 | +3% | |
| | R2D setting #7 | | - 3% | 6.49 | +3% | |
| | R2D setting #8 | | - 3% | 8.25 | +3% | |
| | R2D setting #9 | | - 3% | 10.5 | +3% | |
| | R2D setting #10 | | - 3% | 13.3 | +3% | |
| | R2D setting #11 | | - 3% | 16.2 | +3% | |
| | R2D setting #12 | | - 3% | 20.5 | +3% | |
| | R2D setting #13 | | - 3% | 24.9 | +3% | |
| | R2D setting #14 | | - 3% | 30.1 | +3% | |
| | R2D setting #15 | | - 3% | 36.5 | +3% | |
| PROTECTION FEATURES | | | | | | |
| | Thermal shutdown threshold temperature | | 140 | 150 | 160 | $^\circ\text{C}$ |
| | Thermal shutdown hysteresis | | 15 | 20 | 25 | $^\circ\text{C}$ |
| TIMING PARAMETERS | | | | | | |
| t _{d(POR)} | POR signal delay after reaching POR threshold | | | 3.8 | | ms |
| t _{d(EN)} | Delay between a rising edge on the EN pin and the start of the output voltage ramp | Supply voltage stable before EN pin goes high | | | 1.5 | ms |
| t _{w(SS)} | Soft-start step duration | $V_O > 1.8\text{ V}$ | 100 | 125 | 150 | μs |
| t _{d(SEL)} | Delay between a change in the state of the SEL pin and the first step change in the output voltage | | | 30 | 40 | μs |
| t _{w(DVS)} | Dynamic voltage scaling step duration | | 100 | 125 | 150 | μs |
| t _{d(RESTART)} | Restart delay after protection | | | 10 | 11 | ms |

6.6 Typical Characteristics

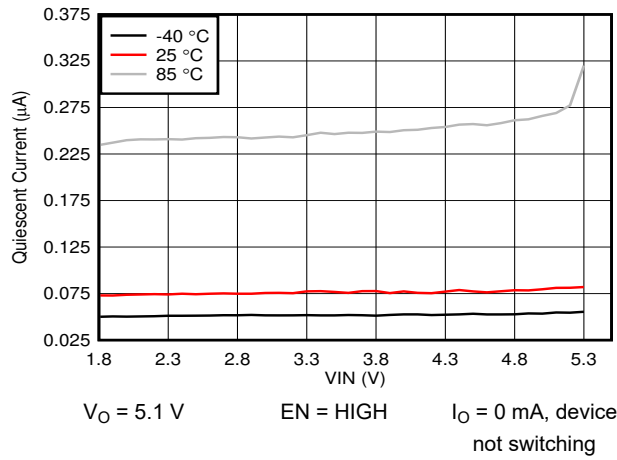


图 6-1. Quiescent Current into VIN versus Input Voltage

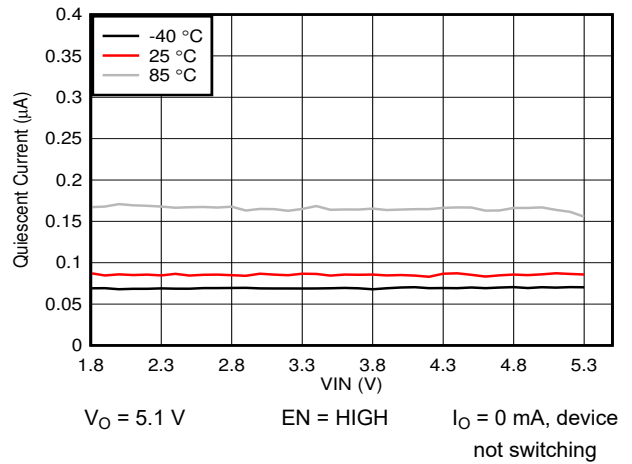


图 6-2. Quiescent Current into VOUT versus Input Voltage

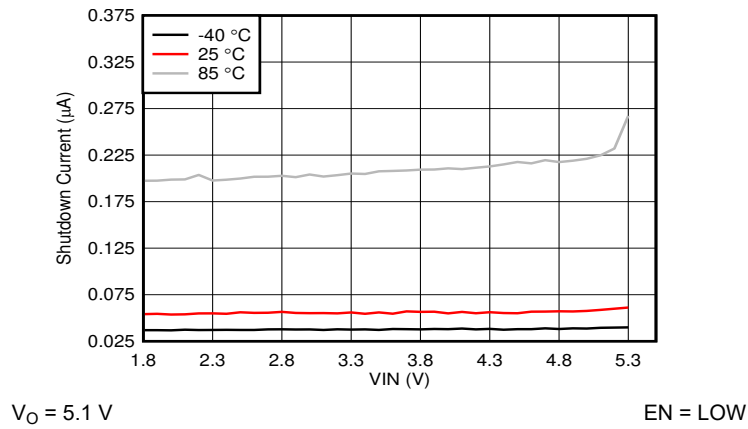


图 6-3. Shutdown Current versus Input Voltage

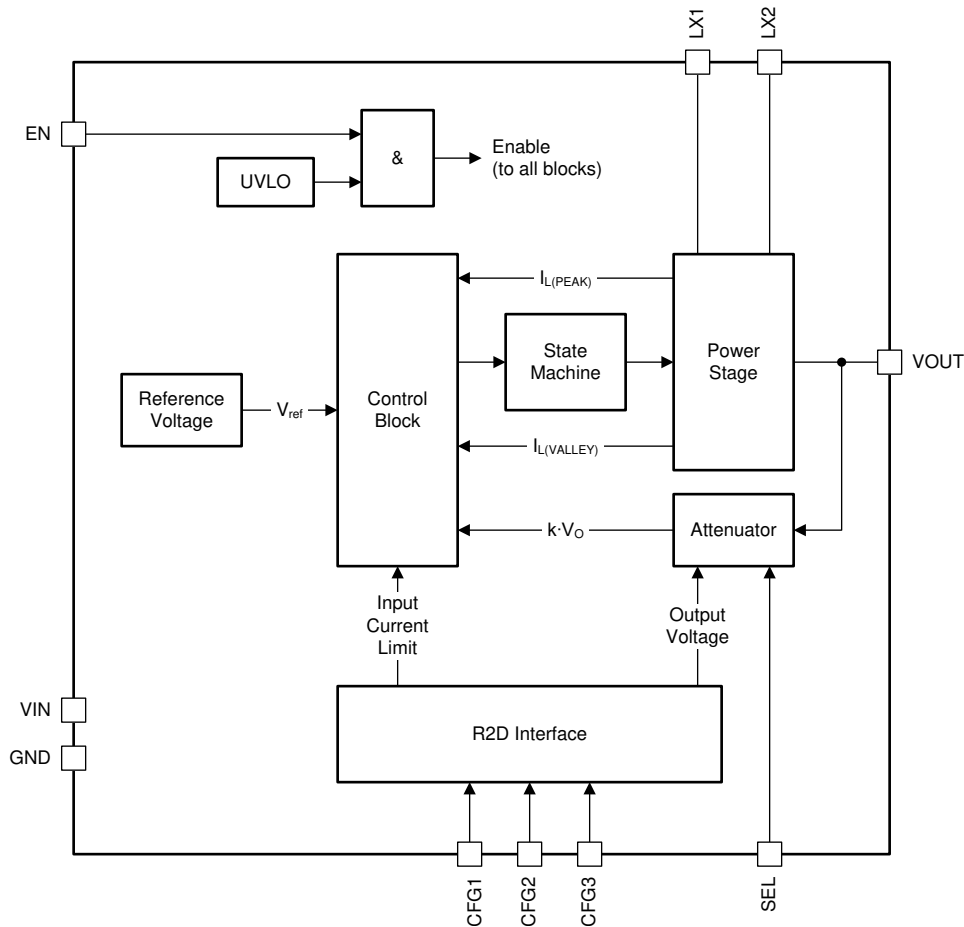
7 Detailed Description

7.1 Overview

The TPS63900 device is a four-switch synchronous buck-boost converter with a maximum output current of 400 mA. It has a single-mode operation that allows the device to regulate the output voltage to a level above, below, or equal to the input voltage without displaying the mode-switching transients and unpredictable inductor current ripple from which many other buck-boost devices suffer.

The switching frequency of the TPS63900 device varies with the operating conditions: it is lowest when I_O is low and increases smoothly as I_O increases.

7.2 Functional Block Diagram



7.3 Feature Description

7.3.1 Trapezoidal Current Control

Figure 7-1 shows a simplified block diagram of the power stage of the device. Inductor current is sensed in series with Q1 (the peak current) and Q4 (the valley current).

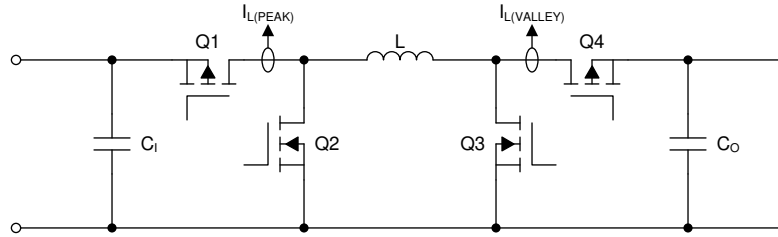


图 7-1. Power Stage Simplified Block Diagram

The device uses a trapezoidal inductor current to regulate its output under all operating conditions. Thus, the device only has one operating mode and does not display any of the mode-change transients or unpredictable switching displayed by many other buck-boost devices.

There are four phases of operation:

- Phase A - Q1 and Q3 are on and Q2 and Q4 are off
- Phase B - Q1 and Q4 are on and Q2 and Q3 are off
- Phase C - Q2 and Q4 are on and Q1 and Q3 are off
- Phase D - Q2 and Q3 are on and Q1 and Q4 are off

图 7-2 shows the inductor current waveform when $V_I > V_O$, 图 7-3 shows the current waveform when $V_I = V_O$, and 图 7-4 shows the current waveform when $V_I < V_O$.

图 7-2 through 图 7-4 show the typical waveforms during continuous conduction mode (CCM) switching for three operating conditions. During discontinuous conduction mode (DCM), the typical inductor current waveforms look similar to CCM with Phase D at 0 A inductor current. In deep boost mode, where $V_I \ll V_O$, Phase C length gradually decreases to zero until the switching waveform becomes triangular.

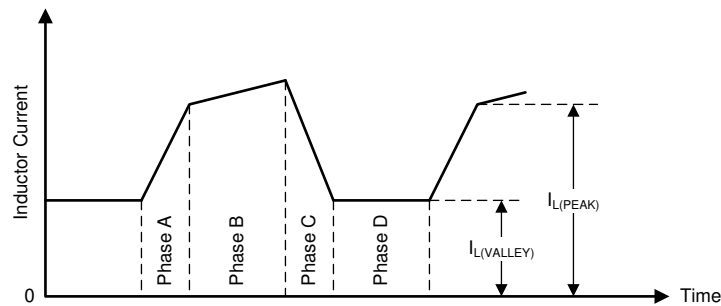


图 7-2. Inductor Current Waveform when $V_I > V_O$ (CCM)

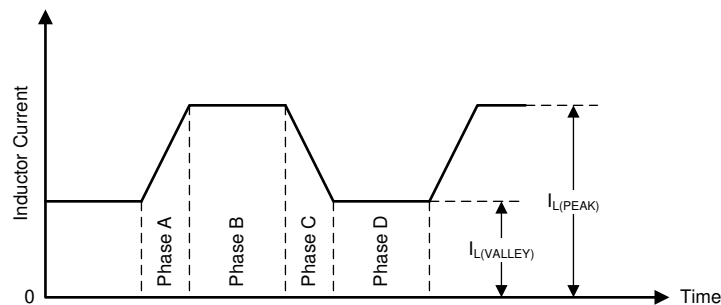


图 7-3. Inductor Current Waveform when $V_I = V_O$ (CCM)

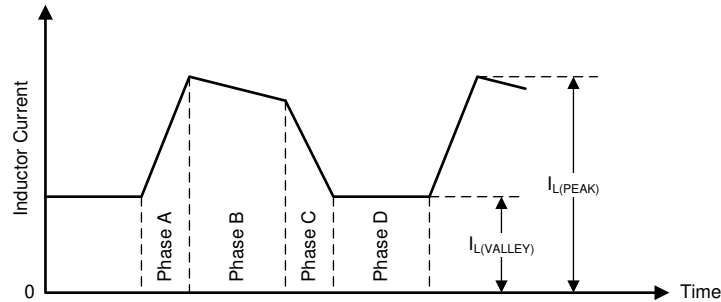


图 7-4. Inductor Current Waveform when $V_I < V_O$ (CCM)

The ideal relationship between V_I and V_O (that is, assuming no losses) is

$$V_O = V_I \left(\frac{t_{w(A)} + t_{w(B)}}{t_{w(B)} + t_{w(C)}} \right) \quad (1)$$

where

- V_I is the input voltage
- V_O is the output voltage
- $t_{w(A)}$ is the duration of phase A
- $t_{w(B)}$ is the duration of phase B
- $t_{w(C)}$ is the duration of phase C

By varying relative duration of each phase, the device can regulate V_O to be less than, equal to, or greater than V_I .

7.3.2 Device Enable / Disable

The device turns on when *all* the following conditions are true:

- The supply voltage is greater than the positive-going undervoltage lockout (UVLO) threshold.
- The EN pin is high.

The device turns off when *at least one* of the following conditions is true:

- The supply voltage is less than the negative-going UVLO threshold.
- The EN pin is low.

A complete state diagram is shown in [图 7-13](#).

After the device turns on, the internal reference system starts, then the trimming information and the CFG pins are read out. The device ignores any further changes to the CFG pins during device operation.

[图 7-5](#) shows the internal start-up sequence.

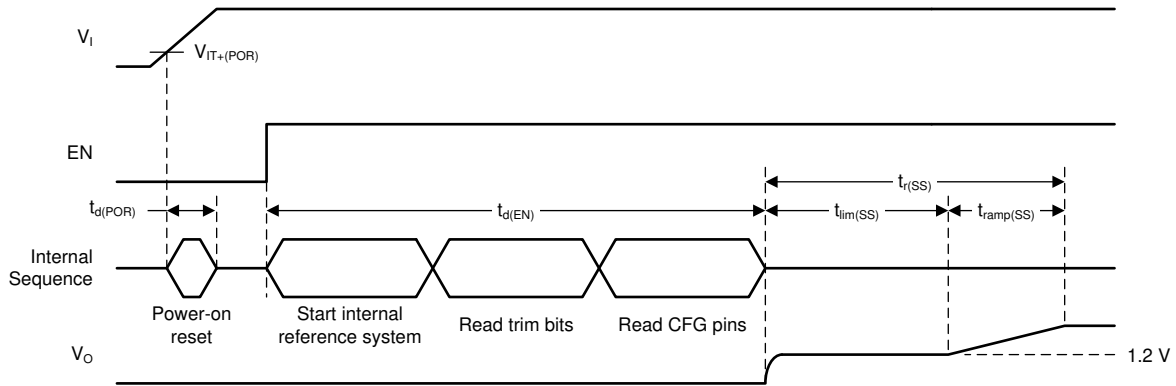


图 7-5. Internal Start-Up Sequence

7.3.3 Soft Start

The device has a soft-start feature that starts the device typically with 500-mA peak current limit until $V_O = 1.8\text{ V}$ and 500 μs elapsed when the input current limit is set to unlimited (see 节 7.3.4). Afterwards, the output voltage ramps in a series of discrete steps (see 图 7-6).

- When $V_O \leq 1.8\text{ V}$, peak current is limited to 500 mA typical for 500 μs .
- When $V_O > 1.8\text{ V}$, each step is 100 mV high and has a duration of 125 μs .

The total soft-start ramp-up time can be calculated with Equation 2.

$$t_{r(SS)} = V_O \times 1.25 \left[\frac{\text{ms}}{\text{V}} \right] - 1.75 [\text{ms}] \quad (2)$$

where

- $t_{r(SS)}$ is the rise time of the output voltage in milliseconds
- V_O is the output voltage in volts

图 7-6 shows a typical start-up case.

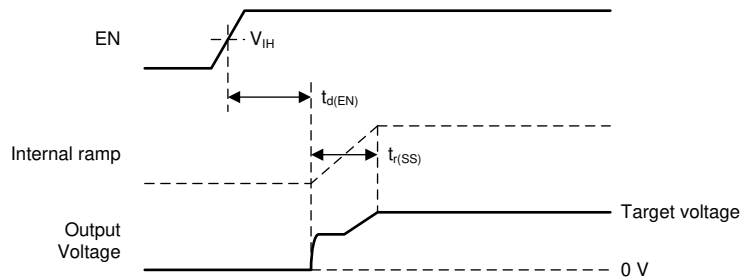


图 7-6. Start-Up Behavior

图 7-7 illustrates the start-up step size behavior.

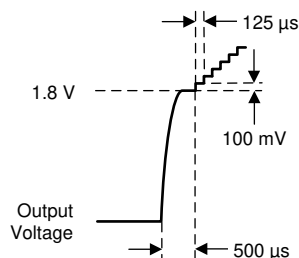


图 7-7. Typical Soft-Start Ramp Step Size

表 7-1 shows the typical start-up time for a number of standard output voltages.

表 7-1. Typical Start-Up Times

| OUTPUT VOLTAGE | SOFT-START RAMP-UP TIME ($t_{r(SS)}$) | START-UP TIME ($t_{d(EN)} + t_{r(SS)}$) |
|----------------|---|---|
| 1.8 V | 0.5 ms | 2 ms |
| 2.5 V | 1.375 ms | 2.875 ms |
| 3.3 V | 2.375 ms | 3.875 ms |
| 5 V | 4.5 ms | 6 ms |

If the output is prebiased – that is, the initial output voltage is not zero – the start-up behavior is as follows:

- If the prebias voltage is *lower* than the target voltage, the device does not start switching until the ramping output voltage is greater than the prebias voltage (see 图 7-8).
- If the prebias voltage is *higher* than the target voltage, the device does not start to switch until the output voltage has decreased to the target voltage (see 图 7-9). The device cannot actively discharge the output to the target voltage and relies on the load current to discharge the output capacitor and decrease the output voltage to the target value.

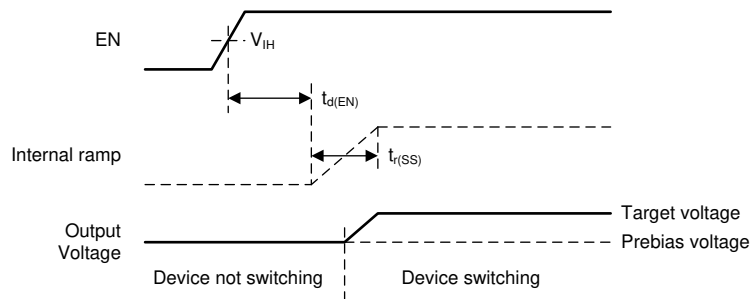


图 7-8. Start-Up Behavior into Prebiased (Low) Output

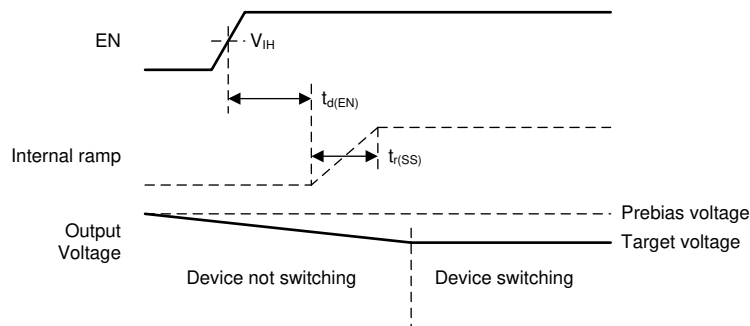


图 7-9. Start-Up Behavior into Prebiased (High) Output

7.3.4 Input Current Limit

The device can limit the current drawn from its supply, so that it can be used with batteries that do not support high peak currents. The input current limit is active during normal operation and at start-up to avoid high inrush current. The device has eight current limit settings:

- 1 mA
- 2.5 mA
- 5 mA
- 10 mA
- 25 mA
- 50 mA

- 100 mA
- Unlimited

CFG1 and CFG2 pins select which setting is active (see § 7.3.6).

7.3.5 Dynamic Voltage Scaling

The device has a dynamic voltage scaling function to switch between the two output voltage settings. When the SEL pin changes state, the output voltage ramps to the new value in 100-mV steps. The duration of each step is 125 μs (see 图 7-10).

The device does not actively discharge the output capacitor, when the output voltage ramps to a lower level. This leads to a longer output voltage settling time when light load is applied (see 图 7-11). The settling time can be calculated with Equation 3.

$$t_{\text{settle}} = C_O \times \frac{V_{O(\text{HIGH})} - V_{O(\text{LOW})}}{I_O} \quad (3)$$

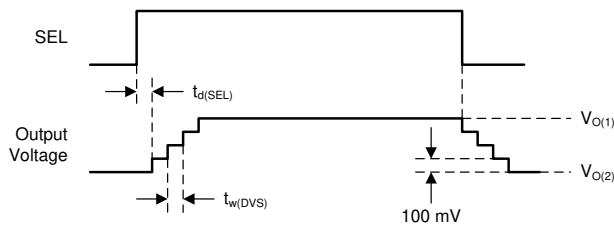


图 7-10. Dynamic Voltage Scaling with High Load

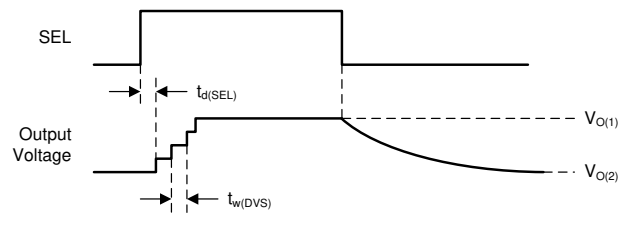


图 7-11. Dynamic Voltage Scaling with Light Load

7.3.6 Device Configuration (Resistor-to-Digital Interface)

The device has three configuration pins (CFG1, CFG2, and CFG3) that control its operation. When the device starts up, a resistor-to-digital (R2D) interface reads the values of the configuration resistors on the CFG pins and transfers the setting to an internal configuration register (see 图 7-12).

- CFG1 and CFG2 set $V_{O(2)}$ level and the input current limit.
- CFG3 sets $V_{O(1)}$ level.

To reduce power consumption, the device reads the value of the resistors connected to the configuration pins during start-up and then disables these pins. Once the device has started to operate, changes to the configuration pins have no effect.

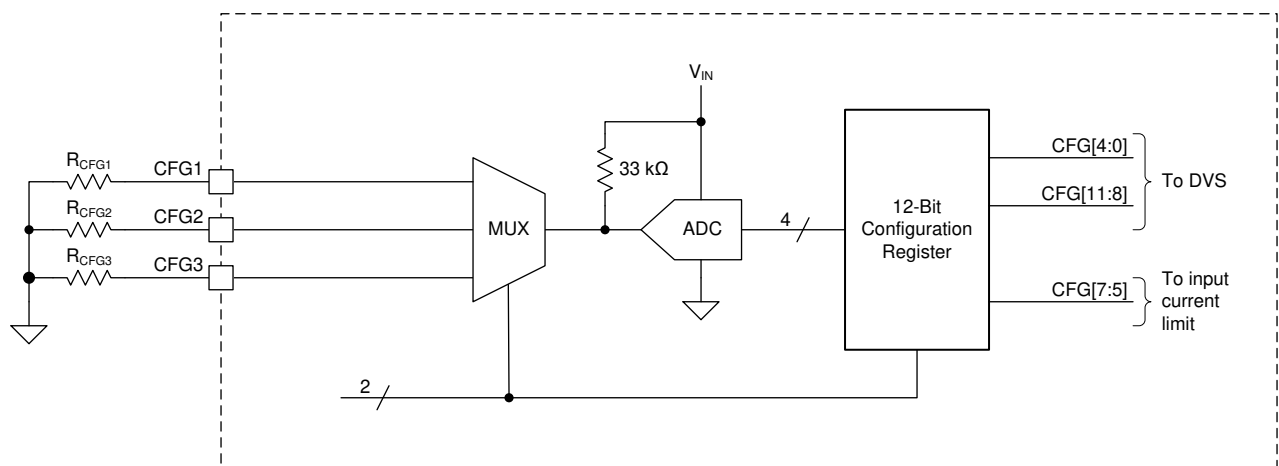


图 7-12. Resistor-to-Digital Interface Block Diagram

表 7-2 summarizes the resistor values needed to configure the device for different input current limit and output voltage (SEL = high) settings. For correct operation, use resistors with a tolerance of $\pm 1\%$ or better and a temperature coefficient of ± 200 ppm or better.

Note

For correct operation, TI recommends that the total RMS error of the configuration resistors—including initial tolerance, temperature drift, and ageing—is less than $\pm 3\%$.

表 7-2. Input Current Limit and Output Voltage (SEL = High) Settings

| OUTPUT VOLTAGE - $V_{O(2)}$ (SEL = HIGH) | | INPUT CURRENT LIMIT | | | | | | | |
|--|-------------------|---------------------|-----------------|-----------------|-----------------|-----------------|-----------------|-----------------|-----------------|
| | | UNLIMITED | 100 mA | 50 mA | 25 mA | 10 mA | 5 mA | 2.5 mA | 1 mA |
| 1.8 V | R _{CFG1} | 0 Ω | | | | | | | |
| | R _{CFG2} | 0 Ω | 511 Ω | 1.15 k Ω | 1.87 k Ω | 2.74 k Ω | 3.83 k Ω | 5.11 k Ω | 6.49 k Ω |
| 1.9 V | R _{CFG1} | 511 Ω | | | | | | | |
| | R _{CFG2} | 0 Ω | 511 Ω | 1.15 k Ω | 1.87 k Ω | 2.74 k Ω | 3.83 k Ω | 5.11 k Ω | 6.49 k Ω |
| 2.0 V | R _{CFG1} | 1.15 k Ω | | | | | | | |
| | R _{CFG2} | 0 Ω | 511 Ω | 1.15 k Ω | 1.87 k Ω | 2.74 k Ω | 3.83 k Ω | 5.11 k Ω | 6.49 k Ω |
| 2.1 V | R _{CFG1} | 1.87 k Ω | | | | | | | |
| | R _{CFG2} | 0 Ω | 511 Ω | 1.15 k Ω | 1.87 k Ω | 2.74 k Ω | 3.83 k Ω | 5.11 k Ω | 6.49 k Ω |
| 2.2 V | R _{CFG1} | 2.74 k Ω | | | | | | | |
| | R _{CFG2} | 0 Ω | 511 Ω | 1.15 k Ω | 1.87 k Ω | 2.74 k Ω | 3.83 k Ω | 5.11 k Ω | 6.49 k Ω |
| 2.3 V | R _{CFG1} | 3.83 k Ω | | | | | | | |
| | R _{CFG2} | 0 Ω | 511 Ω | 1.15 k Ω | 1.87 k Ω | 2.74 k Ω | 3.83 k Ω | 5.11 k Ω | 6.49 k Ω |
| 2.4 V | R _{CFG1} | 5.11 k Ω | | | | | | | |
| | R _{CFG2} | 0 Ω | 511 Ω | 1.15 k Ω | 1.87 k Ω | 2.74 k Ω | 3.83 k Ω | 5.11 k Ω | 6.49 k Ω |
| 2.5 V | R _{CFG1} | 6.49 k Ω | | | | | | | |
| | R _{CFG2} | 0 Ω | 511 Ω | 1.15 k Ω | 1.87 k Ω | 2.74 k Ω | 3.83 k Ω | 5.11 k Ω | 6.49 k Ω |
| 2.6 V | R _{CFG1} | 8.25 k Ω | | | | | | | |
| | R _{CFG2} | 0 Ω | 511 Ω | 1.15 k Ω | 1.87 k Ω | 2.74 k Ω | 3.83 k Ω | 5.11 k Ω | 6.49 k Ω |
| 2.7 V | R _{CFG1} | 10.5 k Ω | | | | | | | |
| | R _{CFG2} | 0 Ω | 511 Ω | 1.15 k Ω | 1.87 k Ω | 2.74 k Ω | 3.83 k Ω | 5.11 k Ω | 6.49 k Ω |
| 2.8 V | R _{CFG1} | 13.3 k Ω | | | | | | | |
| | R _{CFG2} | 0 Ω | 511 Ω | 1.15 k Ω | 1.87 k Ω | 2.74 k Ω | 3.83 k Ω | 5.11 k Ω | 6.49 k Ω |
| 2.9 V | R _{CFG1} | 16.2 k Ω | | | | | | | |
| | R _{CFG2} | 0 Ω | 511 Ω | 1.15 k Ω | 1.87 k Ω | 2.74 k Ω | 3.83 k Ω | 5.11 k Ω | 6.49 k Ω |
| 3.0 V | R _{CFG1} | 20.5 k Ω | | | | | | | |
| | R _{CFG2} | 0 Ω | 511 Ω | 1.15 k Ω | 1.87 k Ω | 2.74 k Ω | 3.83 k Ω | 5.11 k Ω | 6.49 k Ω |
| 3.1 V | R _{CFG1} | 24.9 k Ω | | | | | | | |
| | R _{CFG2} | 0 Ω | 511 Ω | 1.15 k Ω | 1.87 k Ω | 2.74 k Ω | 3.83 k Ω | 5.11 k Ω | 6.49 k Ω |
| 3.2 V | R _{CFG1} | 30.1 k Ω | | | | | | | |
| | R _{CFG2} | 0 Ω | 511 Ω | 1.15 k Ω | 1.87 k Ω | 2.74 k Ω | 3.83 k Ω | 5.11 k Ω | 6.49 k Ω |
| 3.3 V | R _{CFG1} | 36.5 k Ω | | | | | | | |
| | R _{CFG2} | 0 Ω | 511 Ω | 1.15 k Ω | 1.87 k Ω | 2.74 k Ω | 3.83 k Ω | 5.11 k Ω | 6.49 k Ω |
| 3.4 V | R _{CFG1} | 0 Ω | | | | | | | |
| | R _{CFG2} | 8.25 k Ω | 10.5 k Ω | 13.3 k Ω | 16.2 k Ω | 20.5 k Ω | 24.9 k Ω | 30.1 k Ω | 36.5 k Ω |

表 7-2. Input Current Limit and Output Voltage (SEL = High) Settings (continued)

| OUTPUT VOLTAGE - $V_{O(2)}$ (SEL = HIGH) | | INPUT CURRENT LIMIT | | | | | | | |
|---|-------------------|---------------------|-----------------|-----------------|-----------------|-----------------|-----------------|-----------------|-----------------|
| | | UNLIMITED | 100 mA | 50 mA | 25 mA | 10 mA | 5 mA | 2.5 mA | 1 mA |
| 3.5 V | R _{CFG1} | 511 Ω | | | | | | | |
| | R _{CFG2} | 8.25 k Ω | 10.5 k Ω | 13.3 k Ω | 16.2 k Ω | 20.5 k Ω | 24.9 k Ω | 30.1 k Ω | 36.5 k Ω |
| 3.6 V | R _{CFG1} | 1.15 k Ω | | | | | | | |
| | R _{CFG2} | 8.25 k Ω | 10.5 k Ω | 13.3 k Ω | 16.2 k Ω | 20.5 k Ω | 24.9 k Ω | 30.1 k Ω | 36.5 k Ω |
| 3.7 V | R _{CFG1} | 1.87 k Ω | | | | | | | |
| | R _{CFG2} | 8.25 k Ω | 10.5 k Ω | 13.3 k Ω | 16.2 k Ω | 20.5 k Ω | 24.9 k Ω | 30.1 k Ω | 36.5 k Ω |
| 3.8 V | R _{CFG1} | 2.74 k Ω | | | | | | | |
| | R _{CFG2} | 8.25 k Ω | 10.5 k Ω | 13.3 k Ω | 16.2 k Ω | 20.5 k Ω | 24.9 k Ω | 30.1 k Ω | 36.5 k Ω |
| 3.9 V | R _{CFG1} | 3.83 k Ω | | | | | | | |
| | R _{CFG2} | 8.25 k Ω | 10.5 k Ω | 13.3 k Ω | 16.2 k Ω | 20.5 k Ω | 24.9 k Ω | 30.1 k Ω | 36.5 k Ω |
| 4.0 V | R _{CFG1} | 5.11 k Ω | | | | | | | |
| | R _{CFG2} | 8.25 k Ω | 10.5 k Ω | 13.3 k Ω | 16.2 k Ω | 20.5 k Ω | 24.9 k Ω | 30.1 k Ω | 36.5 k Ω |
| 4.1 V | R _{CFG1} | 6.49 k Ω | | | | | | | |
| | R _{CFG2} | 8.25 k Ω | 10.5 k Ω | 13.3 k Ω | 16.2 k Ω | 20.5 k Ω | 24.9 k Ω | 30.1 k Ω | 36.5 k Ω |
| 4.2 V | R _{CFG1} | 8.25 k Ω | | | | | | | |
| | R _{CFG2} | 8.25 k Ω | 10.5 k Ω | 13.3 k Ω | 16.2 k Ω | 20.5 k Ω | 24.9 k Ω | 30.1 k Ω | 36.5 k Ω |
| 4.3 V | R _{CFG1} | 10.5 k Ω | | | | | | | |
| | R _{CFG2} | 8.25 k Ω | 10.5 k Ω | 13.3 k Ω | 16.2 k Ω | 20.5 k Ω | 24.9 k Ω | 30.1 k Ω | 36.5 k Ω |
| 4.4 V | R _{CFG1} | 13.3 k Ω | | | | | | | |
| | R _{CFG2} | 8.25 k Ω | 10.5 k Ω | 13.3 k Ω | 16.2 k Ω | 20.5 k Ω | 24.9 k Ω | 30.1 k Ω | 36.5 k Ω |
| 4.5 V | R _{CFG1} | 16.2 k Ω | | | | | | | |
| | R _{CFG2} | 8.25 k Ω | 10.5 k Ω | 13.3 k Ω | 16.2 k Ω | 20.5 k Ω | 24.9 k Ω | 30.1 k Ω | 36.5 k Ω |
| 4.6 V | R _{CFG1} | 20.5 k Ω | | | | | | | |
| | R _{CFG2} | 8.25 k Ω | 10.5 k Ω | 13.3 k Ω | 16.2 k Ω | 20.5 k Ω | 24.9 k Ω | 30.1 k Ω | 36.5 k Ω |
| 4.7 V | R _{CFG1} | 24.9 k Ω | | | | | | | |
| | R _{CFG2} | 8.25 k Ω | 10.5 k Ω | 13.3 k Ω | 16.2 k Ω | 20.5 k Ω | 24.9 k Ω | 30.1 k Ω | 36.5 k Ω |
| 4.8 V | R _{CFG1} | 30.1 k Ω | | | | | | | |
| | R _{CFG2} | 8.25 k Ω | 10.5 k Ω | 13.3 k Ω | 16.2 k Ω | 20.5 k Ω | 24.9 k Ω | 30.1 k Ω | 36.5 k Ω |
| 5.0 V | R _{CFG1} | 36.5 k Ω | | | | | | | |
| | R _{CFG2} | 8.25 k Ω | 10.5 k Ω | 13.3 k Ω | 16.2 k Ω | 20.5 k Ω | 24.9 k Ω | 30.1 k Ω | 36.5 k Ω |

表 7-3 summarizes the resistor values needed to configure the device for different output voltage (SEL = low) settings. For correct operation, use resistors with a tolerance of $\pm 1\%$ or better and a temperature coefficient of better than ± 200 ppm.

表 7-3. Output Voltage (SEL Pin = Low) Settings

| OUTPUT VOLTAGE - $V_{O(1)}$ (SEL = LOW) | R _{CFG3} |
|--|-------------------|
| 1.8 V | 0 Ω |
| 2.0 V | 511 Ω |
| 2.1 V | 1.15 k Ω |
| 2.2 V | 1.87 k Ω |
| 2.3 V | 2.74 k Ω |

**表 7-3. Output Voltage (SEL Pin = Low) Settings
(continued)**

| OUTPUT VOLTAGE - $V_{O(1)}$ (SEL = LOW) | R_{CFG3} |
|--|-----------------|
| 2.4 V | 3.83 k Ω |
| 2.5 V | 5.11 k Ω |
| 2.6 V | 6.49 k Ω |
| 2.7 V | 8.25 k Ω |
| 2.8 V | 10.5 k Ω |
| 3.0 V | 13.3 k Ω |
| 3.3 V | 16.2 k Ω |
| 3.6 V | 20.5 k Ω |
| 4.0 V | 24.9 k Ω |
| 4.5 V | 30.1 k Ω |
| 5.0 V | 36.5 k Ω |

7.3.7 SEL Pin

The SEL pin selects which configuration bits control the output voltage.

- When SEL = high, the output voltage $V_{O(2)}$ is set.
- When SEL = low, the output voltage $V_{O(1)}$ is set.

7.3.8 Short-Circuit Protection

7.3.8.1 Current Limit Setting = 'Unlimited'

The device has a inbuilt short circuit protection function to limit the current through Q1. The maximum current that flows is limited by the peak current limit. The output voltage decreases if the load is higher than the peak current limit. If the output voltage falls below 1.25 typically, the short circuit protection is activated. With short circuit protection activated the input current is limited to 26 mA on average.

The device automatically restarts to normal operation after the short condition is removed.

7.3.8.2 Current Limit Setting = 1 mA to 100 mA

The input current limiting function automatically limits current during a short-circuit condition. The device regulates the average input current for as long as the short-circuit condition exists. If the output voltage falls below 1.25 V typically, the short circuit protection is activated. For input current limit settings of 100 mA, 50 mA and 25 mA, the short circuit protection limits the input current to 26 mA on average. For input current limit setting of 10 mA, 5 mA, 2.5 mA, and 1 mA, the short circuit protection limits the input current to slightly above the typical values for each setting. 表 7-4 shows the typical short circuit currents for each input current limit setting.

The device automatically restarts to previous operation after the short condition is removed.

表 7-4. Typical Input Current During Short Circuit Condition ($V_O < 1.25$ V Typically) for All Input Current Limit Settings

| INPUT CURRENT LIMIT SETTING | TYPICAL SHORT CIRCUIT INPUT CURRENT |
|-----------------------------|-------------------------------------|
| 1 mA | 1.2 mA |
| 2.5 mA | 2.8 mA |
| 5 mA | 5.2 mA |
| 10 mA | 12 mA |
| 25 mA | 26 mA |
| 50 mA | 26 mA |
| 100 mA | 26 mA |

表 7-4. Typical Input Current During Short Circuit Condition ($V_O < 1.25$ V Typically) for All Input Current Limit Settings (continued)

| INPUT CURRENT LIMIT SETTING | TYPICAL SHORT CIRCUIT INPUT CURRENT |
|-----------------------------|-------------------------------------|
| Unlimited | 26 mA |

7.3.9 Thermal Shutdown

The device has a thermal shutdown function that disables the device if it gets too hot for correct operation. When the device cools down, it automatically restarts operation after a typical delay of $t_{d(RESTART)} = 10$ ms. The device starts with the soft-start feature (see # 7.3.3) and keeps the previously read CFG pin setting.

7.4 Device Functional Modes

The device has two functional modes: on and off. The device enters the on mode when the voltage on the VIN pin is higher than the UVLO threshold and a high logic level is applied to the EN pin. The device enters the off mode when the voltage on the VIN pin is lower than the UVLO threshold or a low logic level is applied to the EN pin.

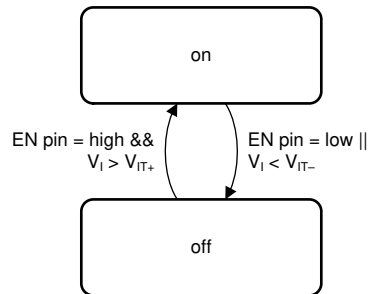


图 7-13. Device Functional Modes

8 Application and Implementation

Note

以下应用部分的信息不属于 TI 组件规范，TI 不担保其准确性和完整性。客户应负责确定 TI 组件是否适用于其应用。客户应验证并测试其设计，以确保系统功能。

8.1 Application Information

The TPS63900 is a high efficiency, non-inverting buck-boost converter with an extremely low quiescent current, suitable for applications that need a regulated output voltage from an input supply that can be higher or lower than the output voltage. The input current limit and output voltage are set through resistors connected to the three CFGx pins.

8.2 Typical Application

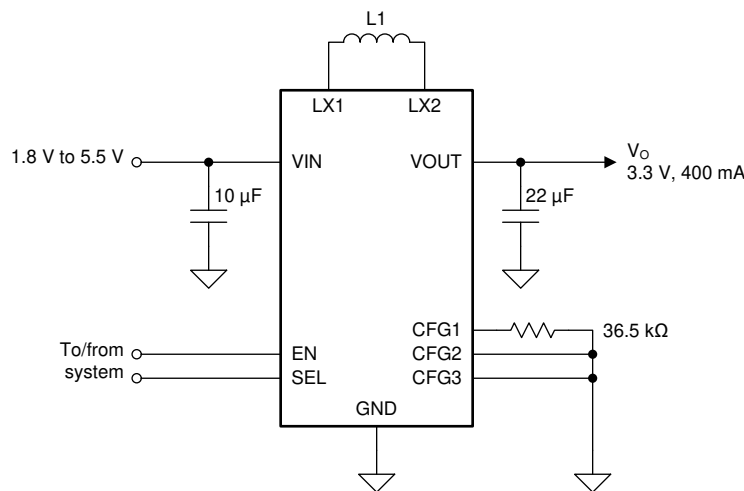


图 8-1. 3.3 V_{OUT} Typical Application

8.2.1 Design Requirements

The design guideline provides a component selection to operate the device within [节 6.3](#).

表 8-1. Matrix of Output Capacitor and Inductor Combinations

| NOMINAL INDUCTOR VALUE [µH] ⁽¹⁾ | NOMINAL OUTPUT CAPACITOR VALUE [µF] ⁽²⁾ | | | | |
|--|--|------------------|----|-----|------------------|
| | 10 | 22 | 47 | 100 | ≥ 300 |
| 2.2 | + ⁽³⁾ | + ⁽⁴⁾ | + | + | + ⁽⁵⁾ |

- (1) Inductor tolerance and current derating is anticipated. The effective inductance can vary by 20% and - 30%.
- (2) Capacitance tolerance and DC bias voltage derating is anticipated. The effective capacitance can vary by 20% and - 50%.
- (3) Output voltage ripple increases versus typical application.
- (4) Typical application. Other check marks indicate possible filter combinations.
- (5) Start-up time increased.

8.2.2 Detailed Design Procedure

The first step is the selection of the output filter components. To simplify this process, [节 6.3](#) outlines minimum and maximum values for inductance and capacitance. Tolerance and derating must be taken into account when selecting nominal inductance and capacitance.

8.2.2.1 Custom Design with WEBENCH Tools

[Click here](#) to create a custom design using the TPS63900 device with the WEBENCH® Power Designer.

1. Start by entering your V_{IN} , V_{OUT} and I_{OUT} requirements.

2. Optimize your design for key parameters like efficiency, footprint or cost using the optimizer dial and compare this design with other possible solutions from Texas Instruments.
3. WEBENCH Power Designer provides you with a customized schematic along with a list of materials with real time pricing and component availability.
4. In most cases, you will also be able to:
 - Run electrical simulations to see important waveforms and circuit performance,
 - Run thermal simulations to understand the thermal performance of your board,
 - Export your customized schematic and layout into popular CAD formats,
 - Print PDF reports for the design, and share your design with colleagues.
5. Get more information about WEBENCH tools at www.ti.com/webench.

8.2.2.2 Inductor Selection

The inductor selection is affected by several parameters such as inductor ripple current, output voltage ripple, transition point into Power Save Mode, and efficiency. See 表 8-2 for typical inductors.

For high efficiencies, the inductor must have a low DC resistance to minimize conduction losses. Especially at high-switching frequencies, the core material has a high impact on efficiency. When using small chip inductors, the efficiency is reduced mainly due to higher inductor core losses. This needs to be considered when selecting the appropriate inductor. The inductor value determines the inductor ripple current. The larger the inductor value, the smaller the inductor ripple current and the lower the core and conduction losses of the converter. Conversely, larger inductor values cause a slower load transient response. To avoid saturation of the inductor, the peak current for the inductor in steady state operation is calculated using Equation 5. Only the equation which defines the switch current in boost mode is shown, because this provides the highest value of current and represents the critical current value for selecting the right inductor.

$$\text{Duty Cycle Boost} \quad D = \frac{V_{\text{OUT}} - V_{\text{IN}}}{V_{\text{OUT}}} \tag{4}$$

$$I_{\text{PEAK}} = \frac{I_{\text{out}}}{\eta \times (1 - D)} + \frac{V_{\text{in}} \times D}{2 \times f \times L} \tag{5}$$

where:

- D = Duty Cycle in Boost mode
- f = Converter switching frequency
- L = Inductor value
- η = Estimated converter efficiency (use the number from the efficiency curves or 0.9 as an assumption)

Note

The calculation must be done for the minimum input voltage in boost mode.

Calculating the maximum inductor current using the actual operating conditions gives the minimum saturation current of the inductor needed. It is recommended to choose an inductor with a saturation current 20% higher than the value calculated using Equation 5. Possible inductors are listed in 表 8-2.

表 8-2. List of Recommended Inductors

| INDUCTOR VALUE [μH] ⁽¹⁾ | SATURATION CURRENT [A] | DCR [m Ω] | PART NUMBER | MANUFACTURER | SIZE (LxWxH mm) |
|---|------------------------|-------------------|-----------------|--------------|-----------------|
| 2.2 | 3.5 | 21 | XFL4020-222ME | Coilcraft | 4 x 4 x 2 |
| 2.2 | 1.7 | 72 | SRN3015TA-2R2M | Bourns | 3 x 3 x 1.5 |
| 2.2 | 3.1 | 97 | DFE252010F-2R2M | Murata | 2.5 x 2 x 1 |
| 2.2 | 2.4 | 116 | DFE201612E-2R2M | Murata | 2.0 x 1.6 x 1.2 |

表 8-2. List of Recommended Inductors (continued)

| INDUCTOR VALUE [μ H] ⁽¹⁾ | SATURATION CURRENT [A] | DCR [m Ω] | PART NUMBER | MANUFACTURER | SIZE (LxWxH mm) |
|--|------------------------|-------------------|-----------------|--------------|-----------------|
| 2.2 | 2.0 | 190 | DFE201210U-2R2M | Murata | 2.0 x 1.2 x 1.0 |

(1) See the [Third-party Products Disclaimer](#).

8.2.2.3 Output Capacitor Selection

For the output capacitor, use of small ceramic capacitors placed as close as possible to the VOUT and GND pins of the IC is recommended. The recommended nominal output capacitor value is a single 22 μ F. If, for any reason, the application requires the use of large capacitors which cannot be placed close to the IC, use a smaller ceramic capacitor in parallel to the large capacitor. The small capacitor must be placed as close as possible to the VOUT and GND pins of the IC.

It is important that the effective capacitance is given according to the recommended value in [# 6.3](#). In general, consider DC bias effects resulting in less effective capacitance. The choice of the output capacitance is mainly a tradeoff between size and transient behavior as higher capacitance reduces transient response overshoot and undershoot and increases transient response time. Possible output capacitors are listed in [表 8-3](#).

There is no upper limit for the output capacitance value.

At light load currents the output voltage ripple is dependent on the output capacitor value. Larger output capacitors reduce the output voltage ripple. The leakage current of the output capacitor adds to the overall quiescent current.

表 8-3. List of Recommended Capacitors

| CAPACITOR VALUE [μ F] ⁽¹⁾ | VOLTAGE RATING [V] | PART NUMBER | MANUFACTURER | SIZE (METRIC) |
|---|--------------------|-------------------|--------------|---------------|
| 22 | 6.3 | GRM187R60J226ME15 | Murata | 0603 (1608) |
| 22 | 6.3 | GRM219R60J476ME44 | Murata | 0805 (3210) |
| 47 | 6.3 | GRM188R60J476ME15 | Murata | 0603 (1608) |

(1) See [Third-party Products Disclaimer](#).

8.2.2.4 Input Capacitor Selection

A 10- μ F input capacitor is recommended to improve line transient behavior of the regulator and EMI behavior of the total power supply circuit. An X5R or X7R ceramic capacitor placed as close as possible to the VIN and GND pins of the IC is recommended. This capacitance can be increased without limit. If the input supply is located more than a few inches from the TPS63900 converter additional bulk capacitance can be required in addition to the ceramic bypass capacitors. An electrolytic or tantalum capacitor with a value of 47 μ F is a typical choice.

When operating from a high impedance source, a larger input buffer capacitor is recommended to avoid voltage drops during start-up and load transients.

The input capacitor can be increased without any limit for better input voltage filtering. The leakage current of the input capacitor adds to the overall quiescent current.

表 8-4. List of Recommended Capacitors

| CAPACITOR VALUE [μ F] ⁽¹⁾ | VOLTAGE RATING [V] | PART NUMBER | MANUFACTURER | SIZE (METRIC) |
|---|--------------------|-------------------|--------------|---------------|
| 10 | 6.3 | GRM188R60J106ME47 | Murata | 0603 (1608) |
| 10 | 10 | GRM188R61A106ME69 | Murata | 0603 (1608) |
| 22 | 6.3 | GRM187R60J226ME15 | Murata | 0603 (1608) |

(1) See [Third-party Products Disclaimer](#).

8.2.2.5 Setting The Output Voltage

The output voltage is set with CFGx pins (see [# 7.3.6](#)).

8.2.3 Application Curves

表 8-5. Components for Application Characteristic Curves for $V_{OUT} = 3.3\text{ V}$

| REFERENCE ⁽¹⁾ | DESCRIPTION ⁽²⁾ | PART NUMBER | MANUFACTURER |
|--------------------------|--|-------------------|-------------------|
| U1 | 400-mA ultra low I _q Buck-Boost Converter (2.5 mm x 2.5 mm QFN) | TPS63900DSK | Texas Instruments |
| L1 | 2.2 μH , 2.5 mm x 2 mm x 1.2 mm, 3.3 A, 82 m Ω | DFE252012F-2R2M | Murata |
| C1 | 10 μF , 0603, Ceramic Capacitor, $\pm 20\%$, 6.3 V | GRM188R60J106ME47 | Murata |
| C2 | 22 μF , 0603, Ceramic Capacitor, $\pm 20\%$, 6.3 V | GRM187R60J226ME15 | Murata |
| CFG1 | 36.5 k Ω , 0603 Resistor, 1%, 100 mW | Standard | Standard |
| CFG2 | 0 Ω , 0603 Resistor, 1%, 100 mW | Standard | Standard |
| CFG3 | 0 Ω , 0603 Resistor, 1%, 100 mW | Standard | Standard |

- (1) See [Third-Party Products Disclaimer](#)
(2) For other output voltages, refer to [表 8-1](#) for resistor values.

表 8-6. Typical Characteristics Curves

| PARAMETER | CONDITIONS | FIGURE |
|---|---|------------------------|
| Output Current Capability | | |
| Typical Output Current Capability versus Input Voltage | $V_O = 1.8\text{ V to }5.0\text{ V}$ | 图 8-2 |
| Switching Frequency | | |
| Typical Burst Switching Frequency versus Output Current | $V_I = 3.3\text{ V}, V_O = 1.8\text{ V to }5.0\text{ V}$ | 图 8-3 |
| Typical Burst Switching Frequency versus Output Current | $V_I = 2.0\text{ V}, V_O = 1.8\text{ V to }5.0\text{ V}$ | 图 8-4 |
| Typical Burst Switching Frequency versus Output Current | $V_I = 5.2\text{ V}, V_O = 1.8\text{ V to }5.0\text{ V}$ | 图 8-5 |
| Efficiency | | |
| Efficiency versus Output Current | $V_I = 1.8\text{ V to }5.5\text{ V}, V_O = 1.8\text{ V}$ | 图 8-6 |
| Efficiency versus Output Current | $V_I = 1.8\text{ V to }5.5\text{ V}, V_O = 3.3\text{ V}$ | 图 8-7 |
| Efficiency versus Output Current | $V_I = 1.8\text{ V to }5.5\text{ V}, V_O = 5.0\text{ V}$ | 图 8-8 |
| Efficiency versus Input Voltage | $I_O = 1\ \mu\text{A to }400\text{ mA}, V_O = 3.3\text{ V}$ | 图 8-9 |
| Switching Waveforms | | |
| Switching Waveforms, Boost Operation | $V_I = 1.8\text{ V}, V_O = 3.3\text{ V}$ | 图 8-10 |
| Switching Waveforms, Boost Operation | $V_I = 2.8\text{ V}, V_O = 3.3\text{ V}$ | 图 8-11 |
| Switching Waveforms, Buck-Boost Operation | $V_I = 3.3\text{ V}, V_O = 3.3\text{ V}$ | 图 8-12 |
| Switching Waveforms, Buck Operation | $V_I = 4.0\text{ V}, V_O = 3.3\text{ V}$ | 图 8-13 |
| Output Voltage Ripple | | |
| Output Voltage Ripple | $V_I = 2.0\text{ V}, V_O = 1.8\text{ V to }5.0\text{ V}$ | 图 8-14 |
| Output Voltage Ripple | $V_I = 3.3\text{ V}, V_O = 1.8\text{ V to }5.0\text{ V}$ | 图 8-15 |
| Output Voltage Ripple | $V_I = 5.2\text{ V}, V_O = 1.8\text{ V to }5.0\text{ V}$ | 图 8-16 |
| Output Voltage Ripple over Temperature | $V_I = 3.3\text{ V}, V_O = 3.6\text{ V}$ | 图 8-17 |
| Regulation Accuracy | | |
| Load Regulation | $V_O = 3.3\text{ V}$ | 图 8-18 |
| Line Regulation | $V_I = 1.8\text{ V to }5.0\text{ V}, \text{Load} = 1\text{ mA}$ | 图 8-19 |
| Transient Performance | | |
| Line Transient, Light Load | $V_I = 2.5\text{ V to }4.2\text{ V}, V_O = 3.3\text{ V}, \text{Load} = 1\text{ mA}$ | 图 8-20 |
| Line Transient, High Load | $V_I = 2.5\text{ V to }4.2\text{ V}, V_O = 3.3\text{ V}, \text{Load} = 100\text{ mA}$ | 图 8-21 |
| Load Transient, 100 mA Step | $V_I = 1.8\text{ V}, V_O = 3.3\text{ V}, \text{Load} = 0\text{ mA to }100\text{ mA}$ | 图 8-22 |
| Load Transient, 100 mA Step | $V_I = 3.3\text{ V}, V_O = 3.3\text{ V}, \text{Load} = 0\text{ mA to }100\text{ mA}$ | 图 8-23 |
| Load Transient, 100 mA Step | $V_I = 1.8\text{ V}, V_O = 3.3\text{ V}, \text{Load} = 0\text{ mA to }100\text{ mA}$ | 图 8-24 |

表 8-6. Typical Characteristics Curves (continued)

| PARAMETER | CONDITIONS | FIGURE |
|--------------------------------------|--|------------------------|
| Load Transient, 300 mA Step | $V_I = 3.3\text{ V}$, $V_O = 1.8\text{ V}$, Load = 0 mA to 300 mA | 图 8-25 |
| Load Transient, 300 mA Step | $V_I = 3.3\text{ V}$, $V_O = 3.3\text{ V}$, Load = 0 mA to 300 mA | 图 8-26 |
| Load Transient, 300 mA Step | $V_I = 5.5\text{ V}$, $V_O = 3.3\text{ V}$, Load = 0 mA to 300 mA | 图 8-27 |
| Start-up | | |
| Start-up Behavior from Rising Enable | $V_I = 3.3\text{ V}$, $V_O = 3.3\text{ V}$, Load = 100 mA | 图 8-28 |
| Start-up Behavior from Rising Enable | $V_I = 1.8\text{ V}$, $V_O = 1.8\text{ V}$, Load = 10 μA | 图 8-29 |
| Start-up Behavior from Rising Enable | $V_I = 1.8\text{ V}$, $V_O = 5.0\text{ V}$, Load = 10 μA | 图 8-30 |
| Start-up Behavior from Rising Enable | $V_I = 1.8\text{ V}$, $V_O = 5.0\text{ V}$, Load = 1000 μF | 图 8-31 |
| ICL (Input Current Limit) | | |
| Start-up with 1 mA ICL | $V_I = 3.3\text{ V}$, $V_O = 3.3\text{ V}$, $C_O = 300\text{ }\mu\text{F}$ | 图 8-32 |
| Start-up with 2.5 mA ICL | $V_I = 3.3\text{ V}$, $V_O = 3.3\text{ V}$, $C_O = 300\text{ }\mu\text{F}$ | 图 8-33 |
| Start-up with 5 mA ICL | $V_I = 3.3\text{ V}$, $V_O = 3.3\text{ V}$, $C_O = 300\text{ }\mu\text{F}$ | 图 8-34 |
| Start-up with 10 mA ICL | $V_I = 3.3\text{ V}$, $V_O = 3.3\text{ V}$, $C_O = 300\text{ }\mu\text{F}$ | 图 8-35 |
| Start-up with 25 mA ICL | $V_I = 3.3\text{ V}$, $V_O = 3.3\text{ V}$, $C_O = 300\text{ }\mu\text{F}$ | 图 8-36 |
| Start-up with 50 mA ICL | $V_I = 3.3\text{ V}$, $V_O = 3.3\text{ V}$, $C_O = 300\text{ }\mu\text{F}$ | 图 8-37 |
| Start-up with 100 mA ICL | $V_I = 3.3\text{ V}$, $V_O = 3.3\text{ V}$, $C_O = 300\text{ }\mu\text{F}$ | 图 8-38 |
| Short Circuit Behavior | | |
| Short Circuit Behavior | $V_I = 3.3\text{ V}$, $V_O = 1.8\text{ V}$ | 图 8-39 |
| Short Circuit Behavior | $V_I = 3.3\text{ V}$, $V_O = 3.3\text{ V}$ | 图 8-40 |
| Short Circuit Behavior | $V_I = 3.3\text{ V}$, $V_O = 5.0\text{ V}$ | 图 8-41 |
| DVS (Digital Voltage Scaling) | | |
| DVS Behavior at Light Load | $V_I = 3.3\text{ V}$, $V_{O(1)} = 2.2\text{ V}$, $V_{O(2)} = 3.6\text{ V}$, Load = 1 k Ω | 图 8-42 |
| DVS Behavior at High Load | $V_I = 3.3\text{ V}$, $V_{O(1)} = 2.2\text{ V}$, $V_{O(2)} = 3.6\text{ V}$, Load = 30 Ω | 图 8-43 |

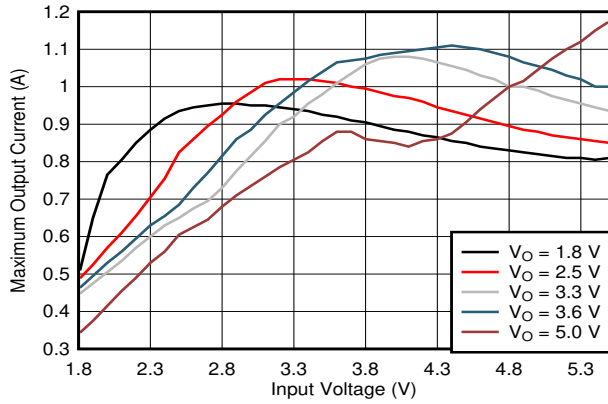


图 8-2. Typical Output Current Capability versus Input Voltage

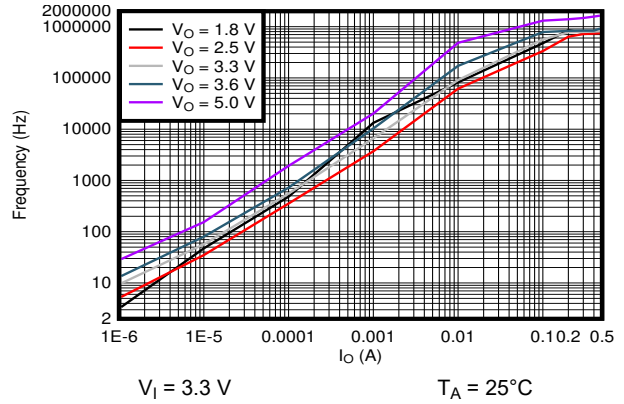


图 8-3. Typical Burst Switching Frequency versus Output Current

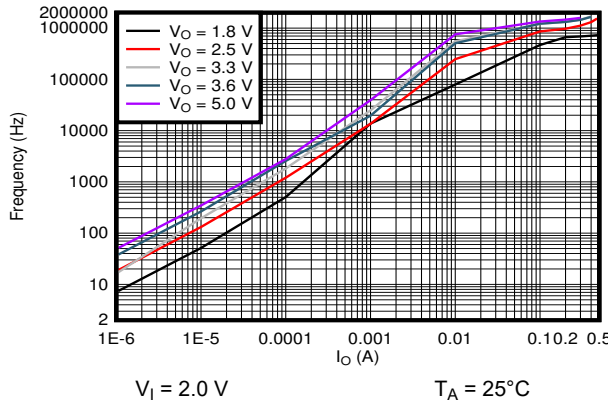


图 8-4. Typical Burst Switching Frequency versus Output Current

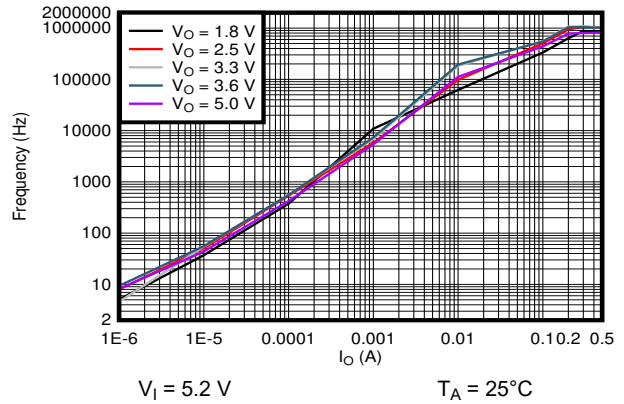


图 8-5. Typical Burst Switching Frequency versus Output Current

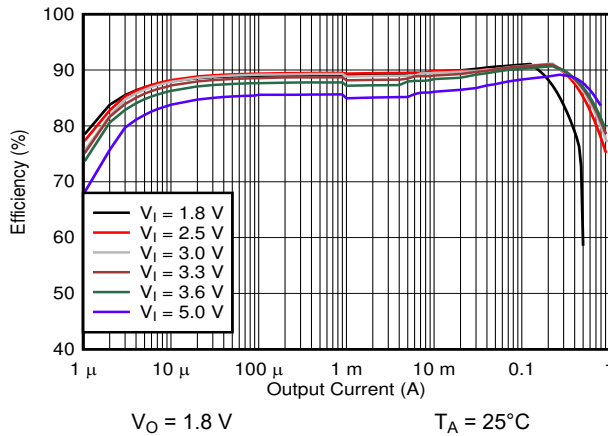


图 8-6. Efficiency versus Output Current

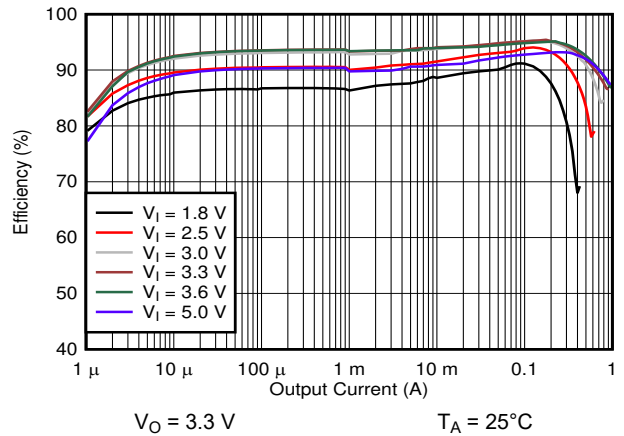
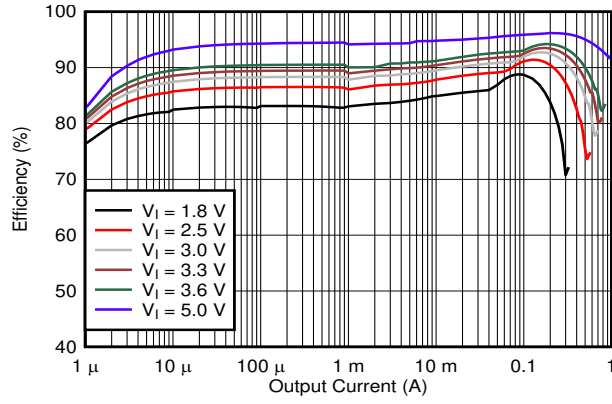
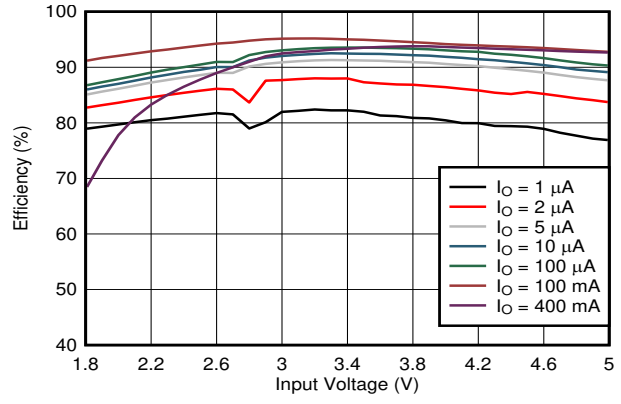


图 8-7. Efficiency versus Output Current



$V_O = 5.0\text{ V}$ $T_A = 25^\circ\text{C}$

图 8-8. Efficiency versus Output Current



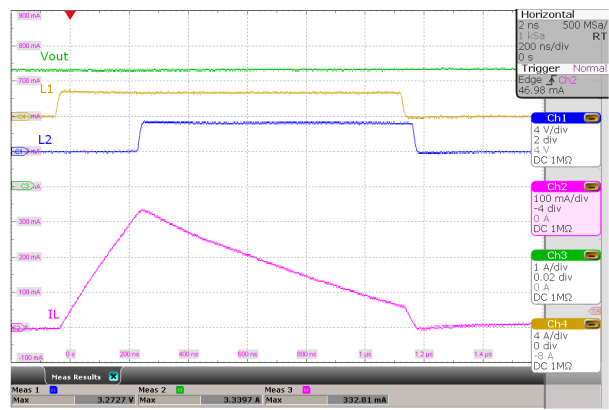
$V_O = 3.3\text{ V}$ $T_A = 25^\circ\text{C}$

图 8-9. Efficiency versus Input Voltage



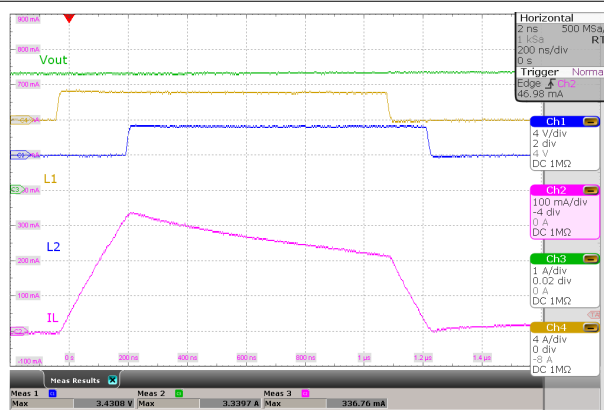
$V_I = 1.8\text{ V}$, $V_O = 3.3\text{ V}$ No load

图 8-10. Switching Waveforms, Boost Operation



$V_I = 2.8\text{ V}$, $V_O = 3.3\text{ V}$ No load

图 8-11. Switching Waveforms, Boost Operation



$V_I = 3.3\text{ V}$, $V_O = 3.3\text{ V}$ No load

图 8-12. Switching Waveforms, Buck-Boost Operation



$V_I = 4.0\text{ V}$, $V_O = 3.3\text{ V}$ No load

图 8-13. Switching Waveforms, Buck Operation

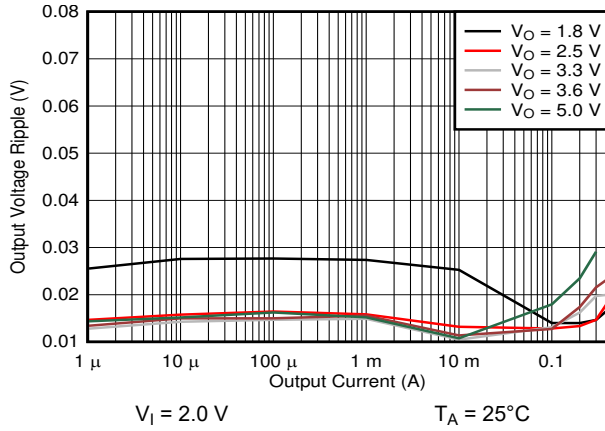


图 8-14. Output Voltage Ripple

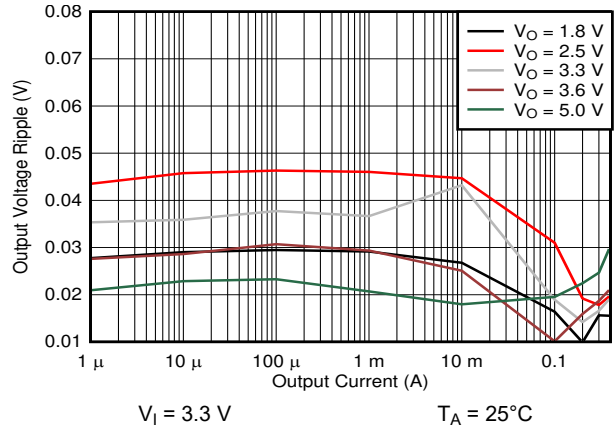


图 8-15. Output Voltage Ripple

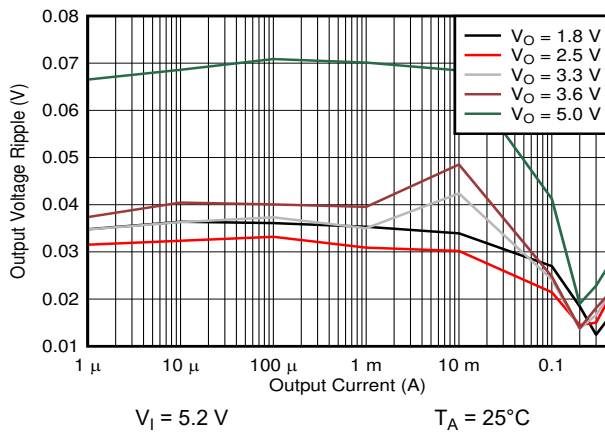


图 8-16. Output Voltage Ripple

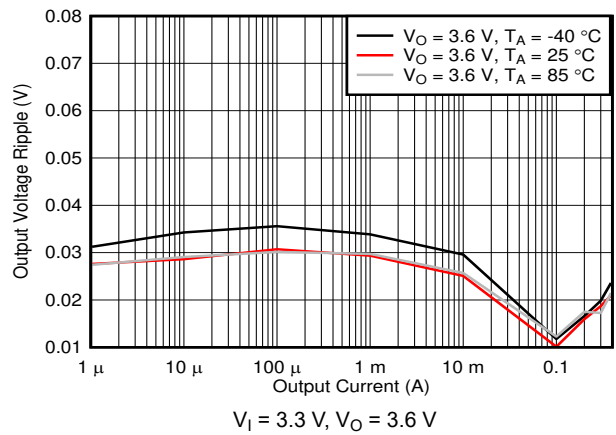


图 8-17. Output Voltage Ripple over Temperature

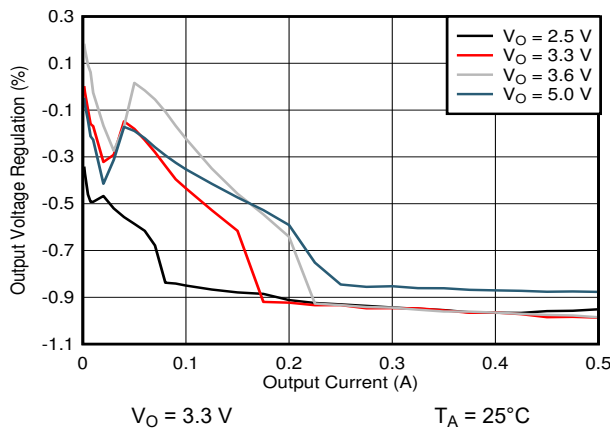


图 8-18. Load Regulation

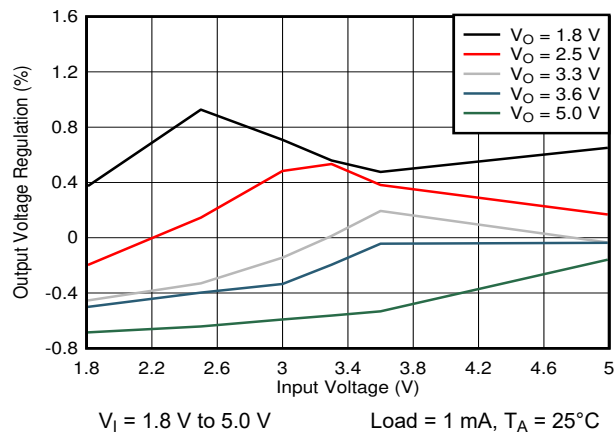
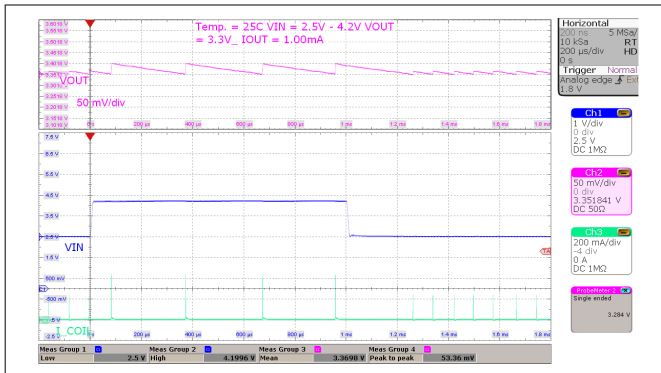
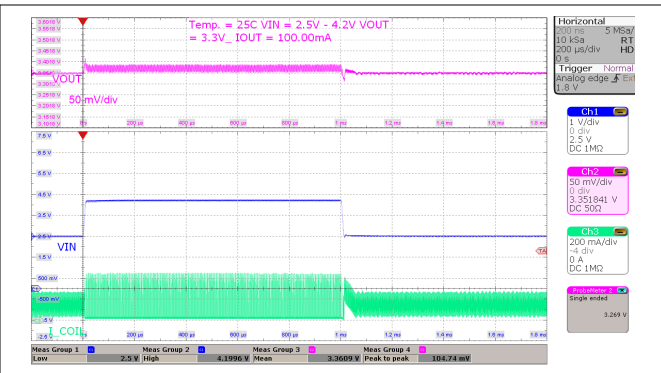


图 8-19. Line Regulation



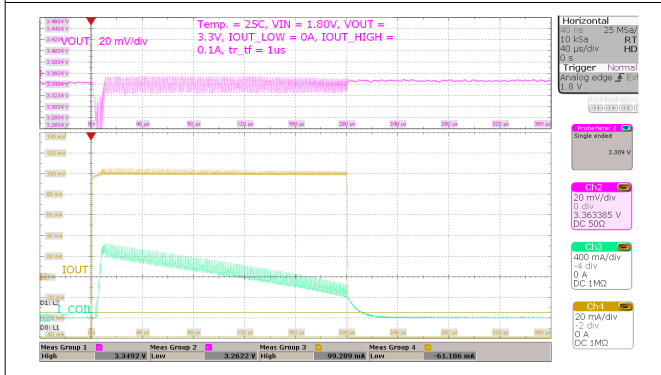
$V_I = 2.5 \text{ V to } 4.2 \text{ V}, V_O = 3.3 \text{ V}$ Load = 1 mA

图 8-20. Line Transient, Light Load



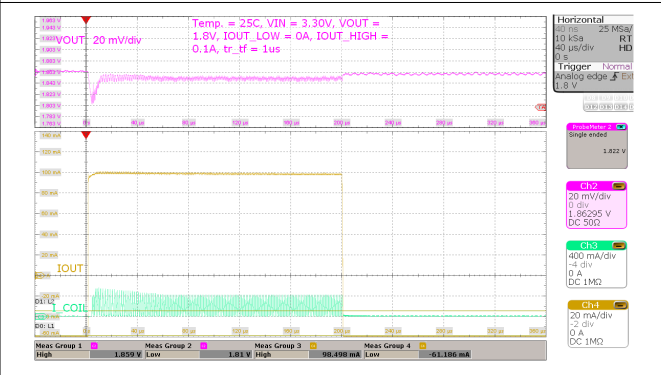
$V_I = 2.5 \text{ V to } 4.2 \text{ V}, V_O = 3.3 \text{ V}$ Load = 100 mA

图 8-21. Line Transient, High Load



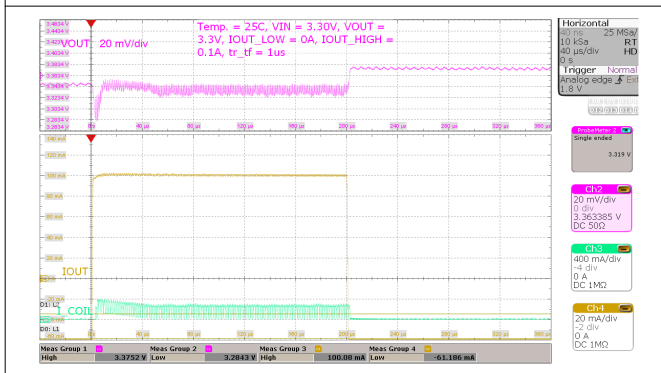
$V_I = 1.8 \text{ V}, V_O = 3.3 \text{ V}$ Load = 0 mA to 100 mA, $t_r/t_f = 1 \mu\text{s}$

图 8-22. Load Transient, 100 mA Step



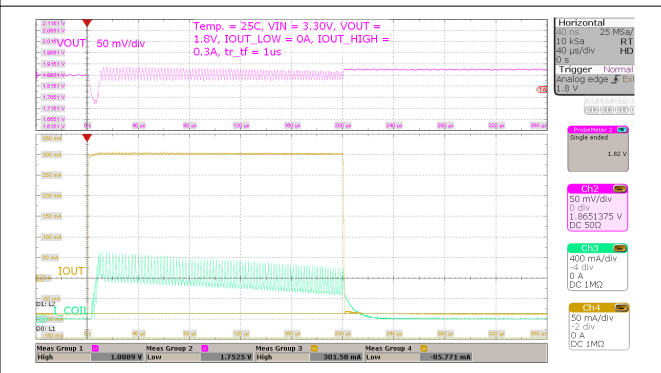
$V_I = 3.3 \text{ V}, V_O = 1.8 \text{ V}$ Load = 0 mA to 100 mA, $t_r/t_f = 1 \mu\text{s}$

图 8-23. Load Transient, 100 mA Step



$V_I = 3.3 \text{ V}, V_O = 3.3 \text{ V}$ Load = 0 mA to 100 mA, $t_r/t_f = 1 \mu\text{s}$

图 8-24. Load Transient, 100 mA Step



$V_I = 3.3 \text{ V}, V_O = 1.8 \text{ V}$ Load = 0 mA to 300 mA, $t_r/t_f = 1 \mu\text{s}$

图 8-25. Load Transient, 300 mA Step

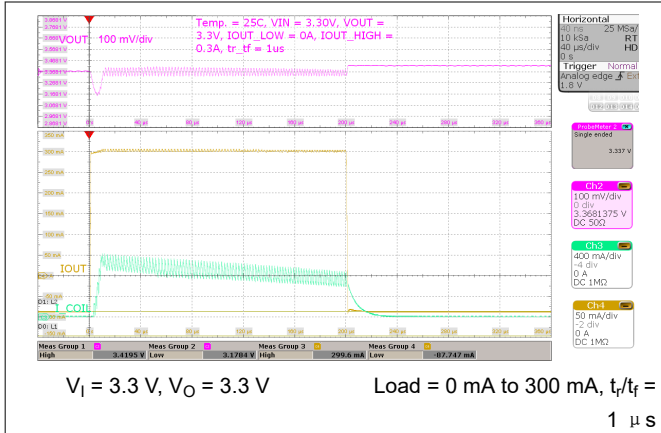


图 8-26. Load Transient, 300 mA Step

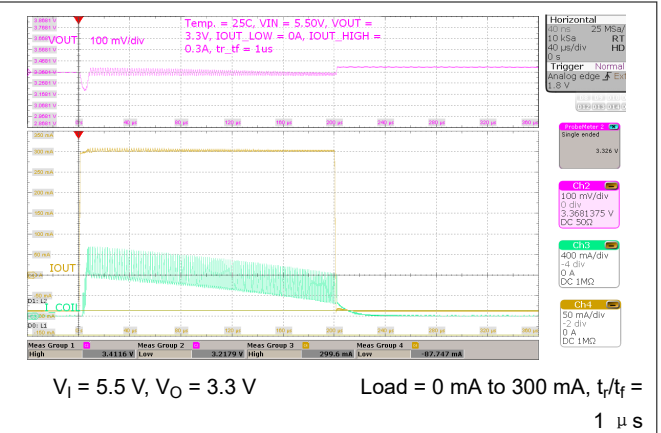


图 8-27. Load Transient, 300 mA Step

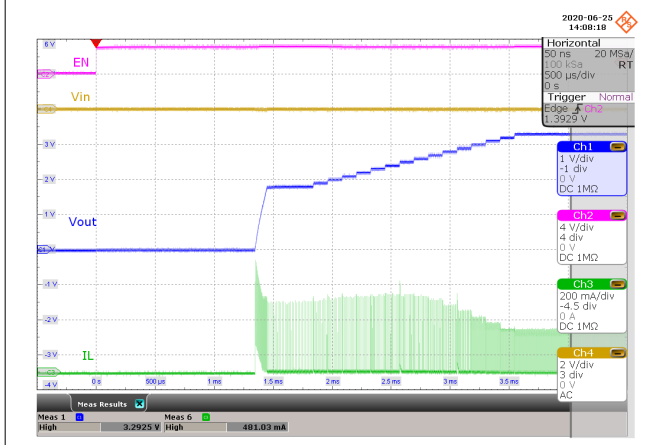


图 8-28. Start-up Behavior from Rising Enable



图 8-29. Start-up Behavior from Rising Enable

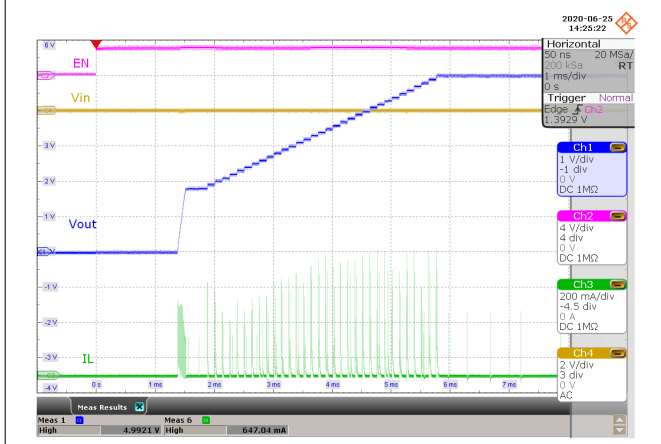


图 8-30. Start-up Behavior from Rising Enable

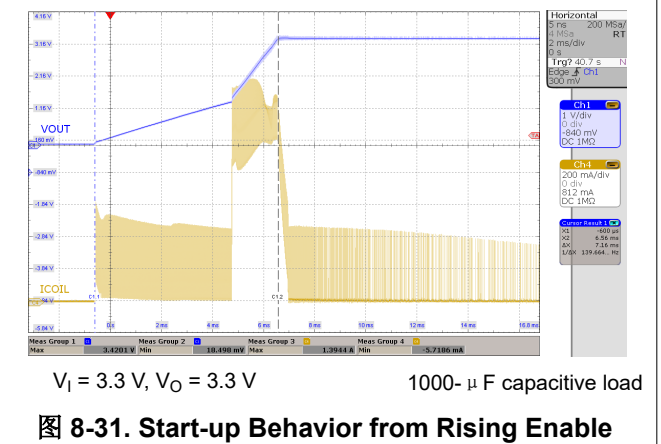
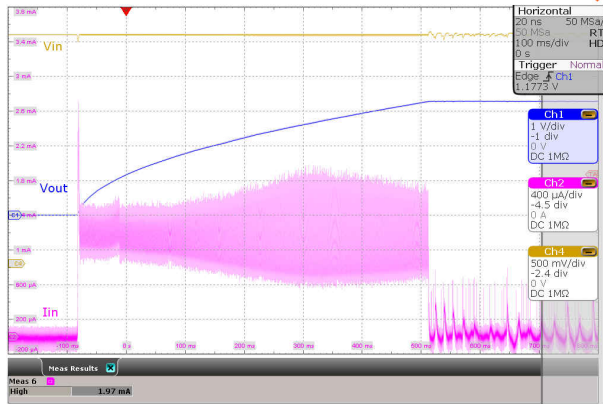
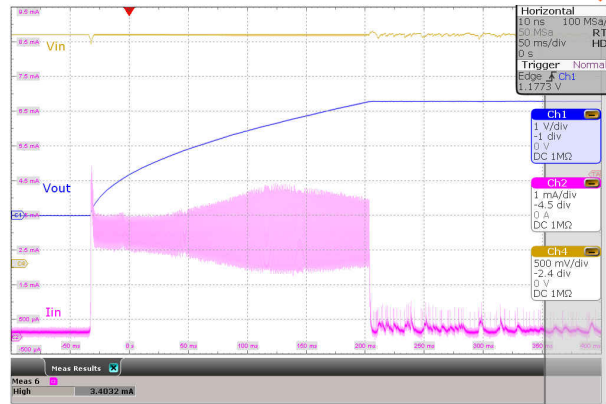


图 8-31. Start-up Behavior from Rising Enable



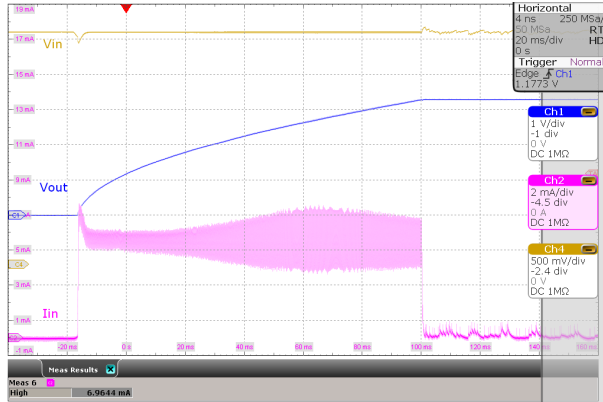
$V_I = 3.3\text{ V}, V_O = 3.3\text{ V}$ $C_I = 32\ \mu\text{F}, C_O = 300\ \mu\text{F}$

图 8-32. Start-up with 1-mA ICL



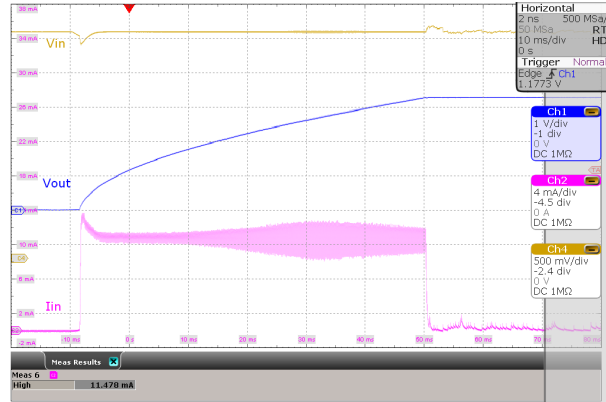
$V_I = 3.3\text{ V}, V_O = 3.3\text{ V}$ $C_I = 32\ \mu\text{F}, C_O = 300\ \mu\text{F}$

图 8-33. Start-up with 2.5-mA ICL



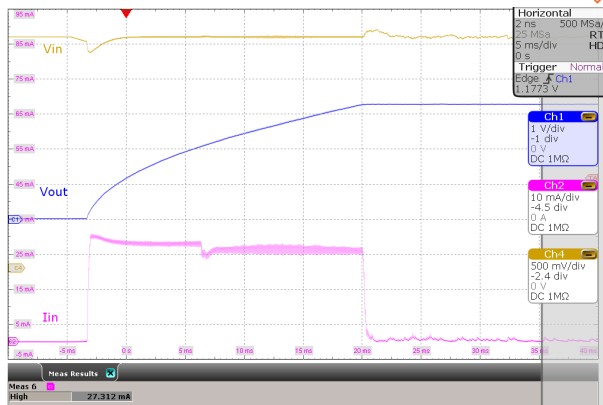
$V_I = 3.3\text{ V}, V_O = 3.3\text{ V}$ $C_I = 32\ \mu\text{F}, C_O = 300\ \mu\text{F}$

图 8-34. Start-up with 5-mA ICL



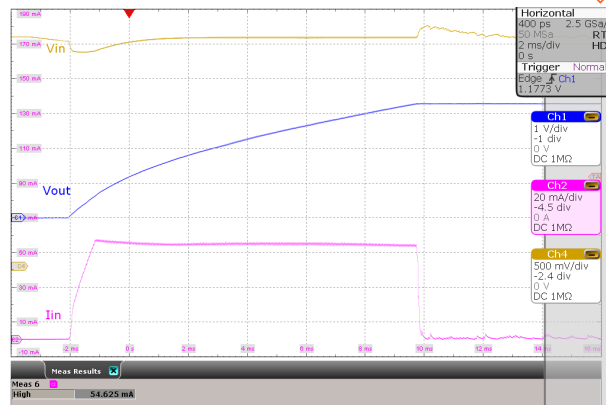
$V_I = 3.3\text{ V}, V_O = 3.3\text{ V}$ $C_I = 32\ \mu\text{F}, C_O = 300\ \mu\text{F}$

图 8-35. Start-up with 10-mA ICL



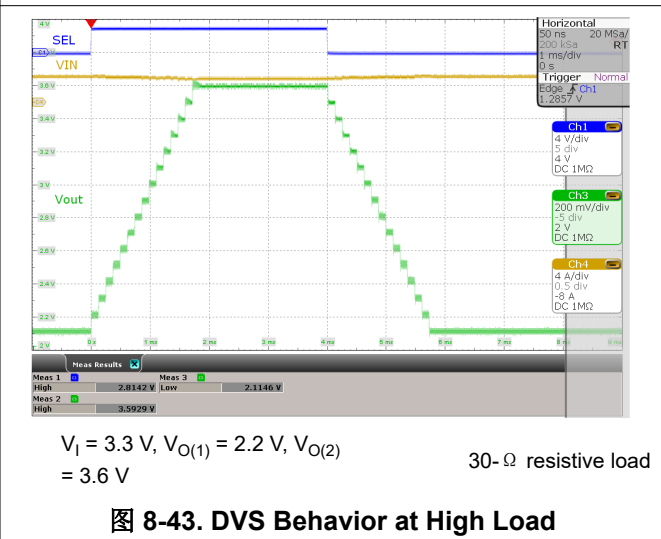
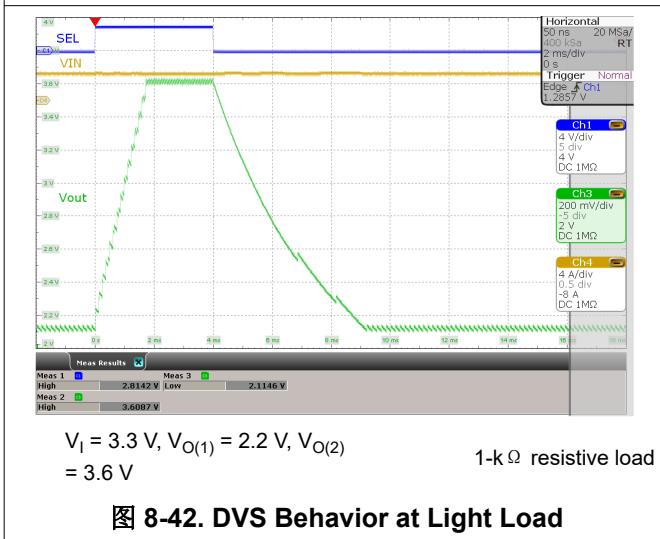
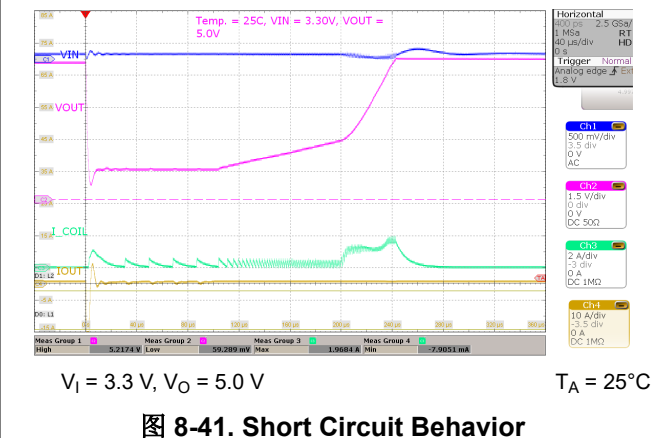
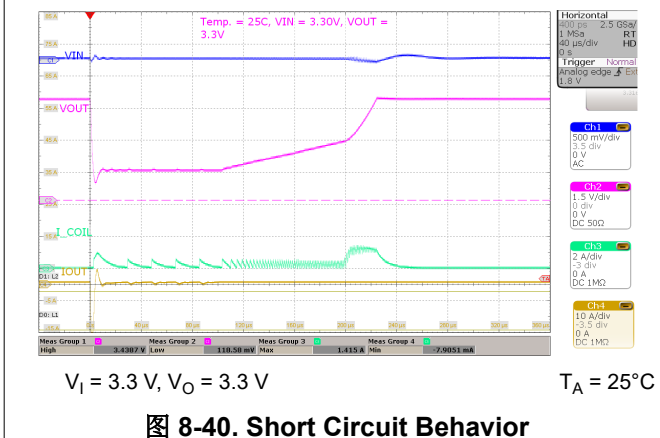
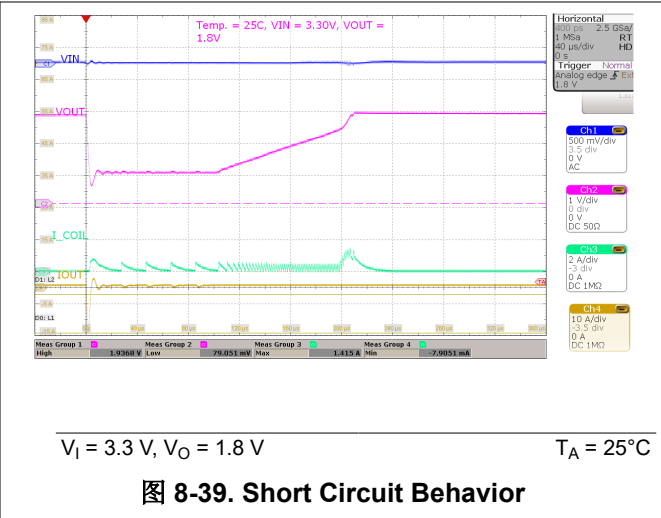
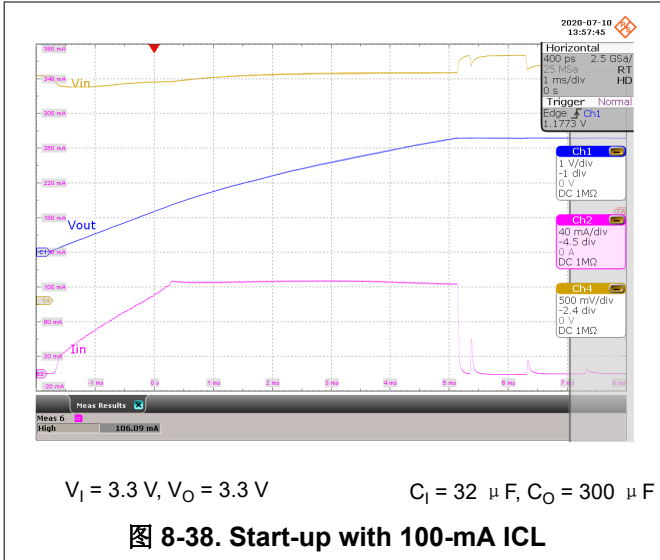
$V_I = 3.3\text{ V}, V_O = 3.3\text{ V}$ $C_I = 32\ \mu\text{F}, C_O = 300\ \mu\text{F}$

图 8-36. Start-up with 25-mA ICL



$V_I = 3.3\text{ V}, V_O = 3.3\text{ V}$ $C_I = 32\ \mu\text{F}, C_O = 300\ \mu\text{F}$

图 8-37. Start-up with 50-mA ICL



9 Power Supply Recommendations

The TPS63900 device is designed to operate with input supplies from 1.8 V to 5.5 V. The input supply must be stable and free of noise to achieve the full performance of the device. If the input supply is located more than a few centimeters away from the device, additional bulk capacitance can be required. The input capacitance shown in the application schematics in this data sheet is sufficient for typical applications.

10 Layout

10.1 Layout Guidelines

PCB layout is an important part of any switching power supply design. A poor layout can cause unstable operation, load regulation problems, increased ripple and noise, and EMI issues.

The following PCB layout design guidelines are recommended:

- Place the input and output capacitors close to the device.
- Minimize the area of the input loop, and use short, wide traces on the top layer to connect the input capacitor to the VIN and GND pins.
- Minimize the area of the output loop, and use short, wide traces on the top layer to connect the output capacitor to the VOUT and GND pins.
- The location of the inductor on the PCB is less important than the location of the input and output capacitors. Place the inductor after the input and output capacitors have been placed close to the device. You can route the traces to the inductor on an inner layer if necessary.

10.2 Layout Example

图 10-1 shows an example of a PCB layout that follows the recommendations of the previous section.

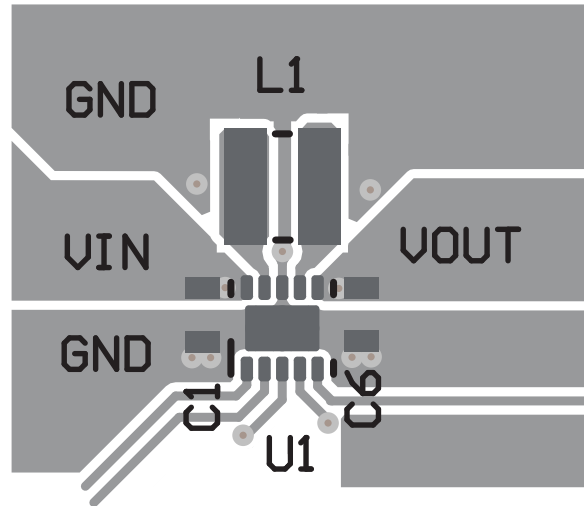


图 10-1. PCB Layout Example

11 Device and Documentation Support

11.1 Device Support

11.1.1 Third-Party Products Disclaimer

TI'S PUBLICATION OF INFORMATION REGARDING THIRD-PARTY PRODUCTS OR SERVICES DOES NOT CONSTITUTE AN ENDORSEMENT REGARDING THE SUITABILITY OF SUCH PRODUCTS OR SERVICES OR A WARRANTY, REPRESENTATION OR ENDORSEMENT OF SUCH PRODUCTS OR SERVICES, EITHER ALONE OR IN COMBINATION WITH ANY TI PRODUCT OR SERVICE.

11.2 Documentation Support

11.2.1 Related Documentation

For related documentation see the following:

Texas Instruments, [TPS63900 EVM User Guide](#)

11.3 接收文档更新通知

要接收文档更新通知，请导航至 ti.com 上的器件产品文件夹。点击 [订阅更新](#) 进行注册，即可每周接收产品信息更改摘要。有关更改的详细信息，请查看任何已修订文档中包含的修订历史记录。

11.4 支持资源

TI E2E™ 支持论坛是工程师的重要参考资料，可直接从专家获得快速、经过验证的解答和设计帮助。搜索现有解答或提出自己的问题可获得所需的快速设计帮助。

链接的内容由各个贡献者“按原样”提供。这些内容并不构成 TI 技术规范，并且不一定反映 TI 的观点；请参阅 TI 的《使用条款》。

11.5 Trademarks

TI E2E™ is a trademark of Texas Instruments.

WEBENCH® is a registered trademark of Texas Instruments.

所有商标均为其各自所有者的财产。

11.6 静电放电警告



静电放电 (ESD) 会损坏这个集成电路。德州仪器 (TI) 建议通过适当的预防措施处理所有集成电路。如果不遵守正确的处理和安装程序，可能会损坏集成电路。

ESD 的损坏小至导致微小的性能降级，大至整个器件故障。精密的集成电路可能更容易受到损坏，这是因为非常细微的参数更改都可能会导致器件与其发布的规格不相符。

11.7 术语表

TI 术语表 本术语表列出并解释了术语、首字母缩略词和定义。

12 Mechanical, Packaging, and Orderable Information

The following pages include mechanical, packaging, and orderable information. This information is the most current data available for the designated devices. This data is subject to change without notice and revision of this document. For browser-based versions of this data sheet, refer to the left-hand navigation.

PACKAGING INFORMATION

| Orderable Device | Status (1) | Package Type | Package Drawing | Pins | Package Qty | Eco Plan (2) | Lead finish/ Ball material (6) | MSL Peak Temp (3) | Op Temp (°C) | Device Marking (4/5) | Samples |
|------------------|---------------|--------------|--------------------|------|----------------|-----------------|--------------------------------------|----------------------|--------------|-------------------------|----------------|
| TPS63900DSKR | ACTIVE | SON | DSK | 10 | 3000 | RoHS & Green | NIPDAU | Level-1-260C-UNLIM | -40 to 125 | 639 | Samples |

(1) The marketing status values are defined as follows:

ACTIVE: Product device recommended for new designs.

LIFEBUY: TI has announced that the device will be discontinued, and a lifetime-buy period is in effect.

NRND: Not recommended for new designs. Device is in production to support existing customers, but TI does not recommend using this part in a new design.

PREVIEW: Device has been announced but is not in production. Samples may or may not be available.

OBSELETE: TI has discontinued the production of the device.

(2) **RoHS:** TI defines "RoHS" to mean semiconductor products that are compliant with the current EU RoHS requirements for all 10 RoHS substances, including the requirement that RoHS substance do not exceed 0.1% by weight in homogeneous materials. Where designed to be soldered at high temperatures, "RoHS" products are suitable for use in specified lead-free processes. TI may reference these types of products as "Pb-Free".

RoHS Exempt: TI defines "RoHS Exempt" to mean products that contain lead but are compliant with EU RoHS pursuant to a specific EU RoHS exemption.

Green: TI defines "Green" to mean the content of Chlorine (Cl) and Bromine (Br) based flame retardants meet JS709B low halogen requirements of <=1000ppm threshold. Antimony trioxide based flame retardants must also meet the <=1000ppm threshold requirement.

(3) MSL, Peak Temp. - The Moisture Sensitivity Level rating according to the JEDEC industry standard classifications, and peak solder temperature.

(4) There may be additional marking, which relates to the logo, the lot trace code information, or the environmental category on the device.

(5) Multiple Device Markings will be inside parentheses. Only one Device Marking contained in parentheses and separated by a "-" will appear on a device. If a line is indented then it is a continuation of the previous line and the two combined represent the entire Device Marking for that device.

(6) Lead finish/Ball material - Orderable Devices may have multiple material finish options. Finish options are separated by a vertical ruled line. Lead finish/Ball material values may wrap to two lines if the finish value exceeds the maximum column width.

Important Information and Disclaimer:The information provided on this page represents TI's knowledge and belief as of the date that it is provided. TI bases its knowledge and belief on information provided by third parties, and makes no representation or warranty as to the accuracy of such information. Efforts are underway to better integrate information from third parties. TI has taken and continues to take reasonable steps to provide representative and accurate information but may not have conducted destructive testing or chemical analysis on incoming materials and chemicals. TI and TI suppliers consider certain information to be proprietary, and thus CAS numbers and other limited information may not be available for release.

In no event shall TI's liability arising out of such information exceed the total purchase price of the TI part(s) at issue in this document sold by TI to Customer on an annual basis.

TAPE AND REEL INFORMATION

QUADRANT ASSIGNMENTS FOR PIN 1 ORIENTATION IN TAPE


*All dimensions are nominal

| Device | Package Type | Package Drawing | Pins | SPQ | Reel Diameter (mm) | Reel Width W1 (mm) | A0 (mm) | B0 (mm) | K0 (mm) | P1 (mm) | W (mm) | Pin1 Quadrant |
|--------------|--------------|-----------------|------|------|--------------------|--------------------|---------|---------|---------|---------|--------|---------------|
| TPS63900DSKR | SON | DSK | 10 | 3000 | 180.0 | 8.4 | 2.8 | 2.8 | 1.0 | 4.0 | 8.0 | Q2 |

TAPE AND REEL BOX DIMENSIONS



*All dimensions are nominal

| Device | Package Type | Package Drawing | Pins | SPQ | Length (mm) | Width (mm) | Height (mm) |
|--------------|--------------|-----------------|------|------|-------------|------------|-------------|
| TPS63900DSKR | SON | DSK | 10 | 3000 | 210.0 | 185.0 | 35.0 |

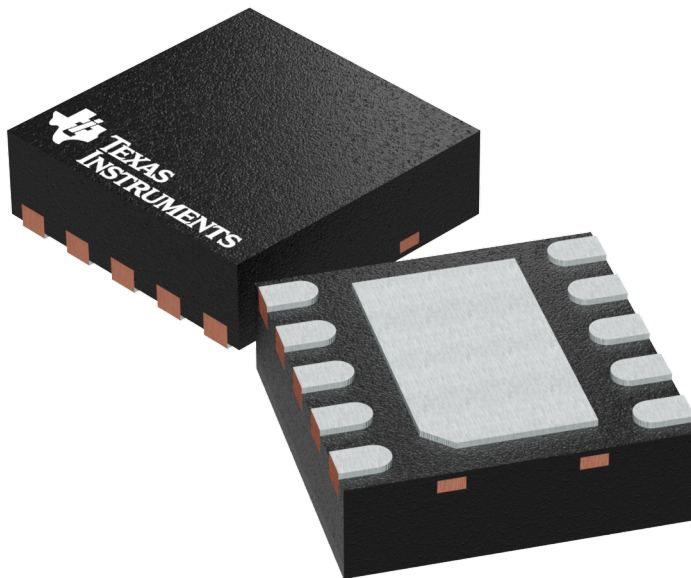
GENERIC PACKAGE VIEW

DSK 10

WSON - 0.8 mm max height

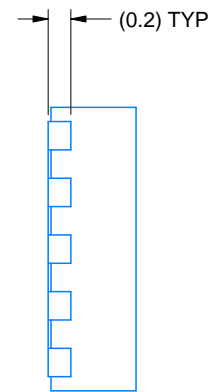
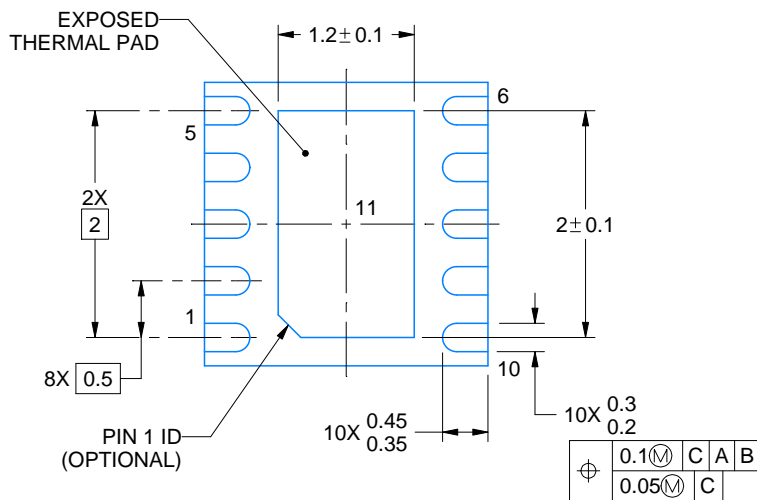
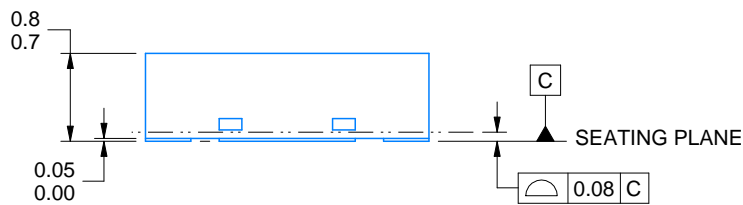
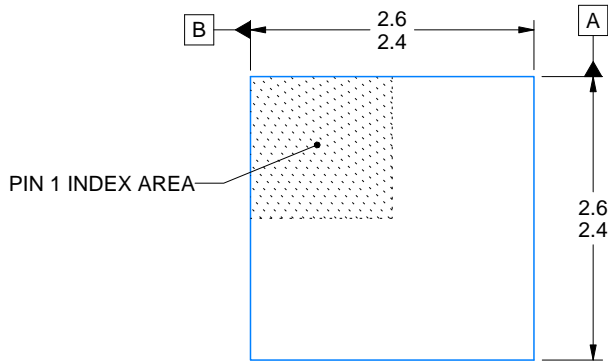
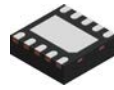
2.5 x 2.5 mm, 0.5 mm pitch

PLASTIC SMALL OUTLINE - NO LEAD



Images above are just a representation of the package family, actual package may vary.
Refer to the product data sheet for package details.

4225304/A



4218903/B 10/2020

NOTES:

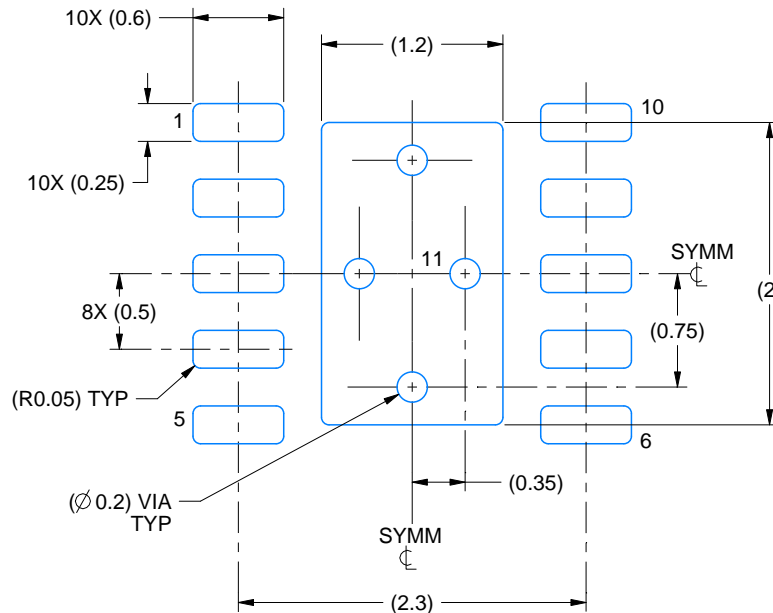
1. All linear dimensions are in millimeters. Any dimensions in parenthesis are for reference only. Dimensioning and tolerancing per ASME Y14.5M.
2. This drawing is subject to change without notice.
3. The package thermal pad must be soldered to the printed circuit board for thermal and mechanical performance.

EXAMPLE BOARD LAYOUT

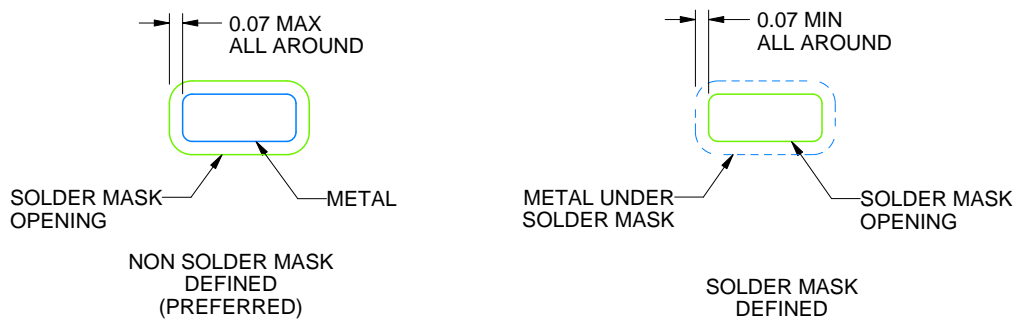
DSK0010A

WSON - 0.8 mm max height

PLASTIC SMALL OUTLINE - NO LEAD



LAND PATTERN EXAMPLE
SCALE:20X



SOLDER MASK DETAILS

4218903/B 10/2020

NOTES: (continued)

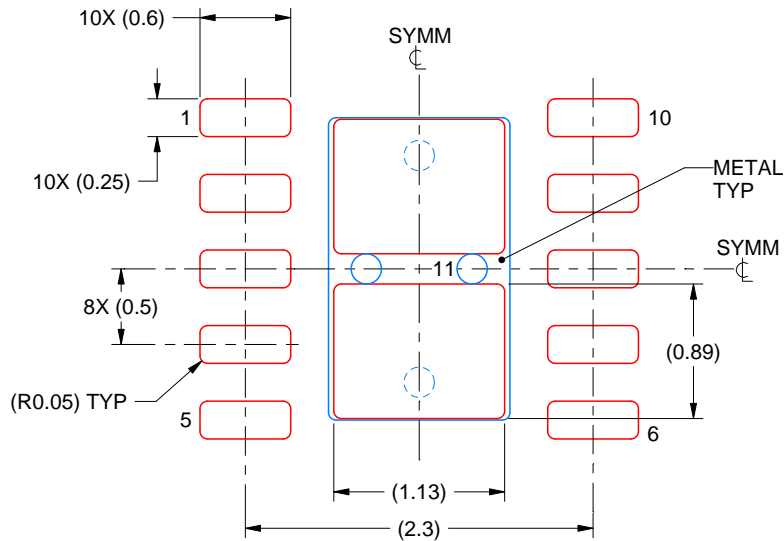
4. This package is designed to be soldered to a thermal pad on the board. For more information, see Texas Instruments literature number SLUA271 (www.ti.com/lit/sluea271).
5. Vias are optional depending on application, refer to device data sheet. If some or all are implemented, recommended via locations are shown.

EXAMPLE STENCIL DESIGN

DSK0010A

WSON - 0.8 mm max height

PLASTIC SMALL OUTLINE - NO LEAD



SOLDER PASTE EXAMPLE
BASED ON 0.125 mm THICK STENCIL

EXPOSED PAD 11
84% PRINTED SOLDER COVERAGE BY AREA
SCALE:20X

4218903/B 10/2020

NOTES: (continued)

6. Laser cutting apertures with trapezoidal walls and rounded corners may offer better paste release. IPC-7525 may have alternate design recommendations.

重要声明和免责声明

TI“按原样”提供技术和可靠性数据（包括数据表）、设计资源（包括参考设计）、应用或其他设计建议、网络工具、安全信息和其他资源，不保证没有瑕疵且不做任何明示或暗示的担保，包括但不限于对适销性、某特定用途方面的适用性或不侵犯任何第三方知识产权的暗示担保。

这些资源可供使用 TI 产品进行设计的熟练开发人员使用。您将自行承担以下全部责任：(1) 针对您的应用选择合适的 TI 产品，(2) 设计、验证并测试您的应用，(3) 确保您的应用满足相应标准以及任何其他功能安全、信息安全、监管或其他要求。

这些资源如有变更，恕不另行通知。TI 授权您仅可将这些资源用于研发本资源所述的 TI 产品的应用。严禁对这些资源进行其他复制或展示。您无权使用任何其他 TI 知识产权或任何第三方知识产权。您应全额赔偿因在这些资源的使用中对 TI 及其代表造成的任何索赔、损害、成本、损失和债务，TI 对此概不负责。

TI 提供的产品受 [TI 的销售条款](#) 或 [ti.com](#) 上其他适用条款/TI 产品随附的其他适用条款的约束。TI 提供这些资源并不会扩展或以其他方式更改 TI 针对 TI 产品发布的适用的担保或担保免责声明。

TI 反对并拒绝您可能提出的任何其他或不同的条款。

邮寄地址：Texas Instruments, Post Office Box 655303, Dallas, Texas 75265

Copyright © 2021，德州仪器 (TI) 公司