

# Haptics

## Solutions for ERM and LRA Actuators



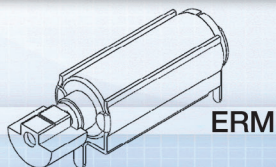
### Overview

Texas Instruments is the leader in driver technology for haptic applications. Our drivers increase performance and decrease integration time of haptics into your system. Only TI offers a total touch solution with a complete portfolio of haptic drivers for any application.

The eccentric rotating mass (ERM) motor and linear resonant actuator (LRA) are two of the most common types of haptic actuators used in the market today. TI driver technology improves the tactile experience by actually improving the performance of these actuators.

#### Solution Characteristics to Consider

- Response Time – the start and stop time of the actuator
- Vibration Strength – the maximum acceleration achievable by the actuator
- Power Consumption



ERM



LRA



### ERM & LRA Drivers

These features, only available from TI, help improve actuator performance and reduce integration time.



#### Waveform Library

123 haptic effects embedded, royalty free



#### Auto-Resonance Detection

Automatically track the resonant frequency of an LRA; maximize vibration strength and improve consistency across devices



#### Audio-to-Haptics

Convert audio signals to haptic effects; automatic haptics for music, games, and movies



#### Automatic Diagnostics

Automatically detect the status of the actuator



#### Automatic Calibration

Automatically detect and configure the closed-loop feedback coefficients for every actuator



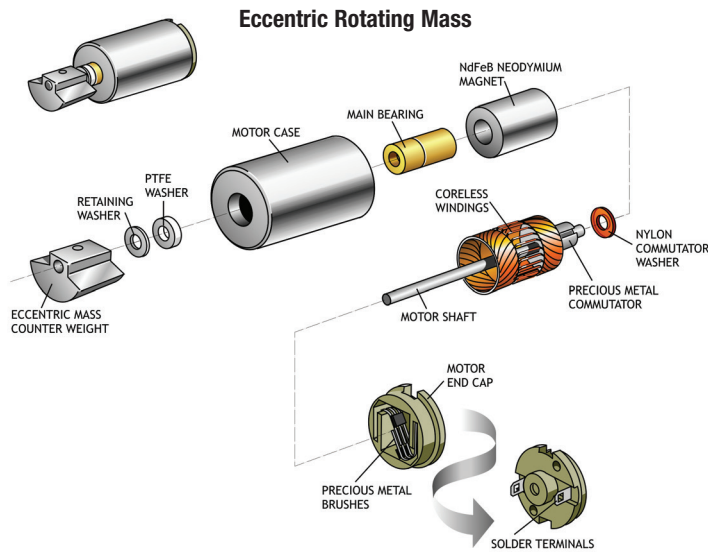
#### Closed Loop Feedback

Improve the response time of ERM and LRA actuators with automatic overdrive and braking

# Haptics

## Solutions for ERM and LRA Actuators

### ERM vs LRA



#### Eccentric Rotating Mass

- Drive: DC, 1 V - 5 V
- Frequency and amplitude are dependent

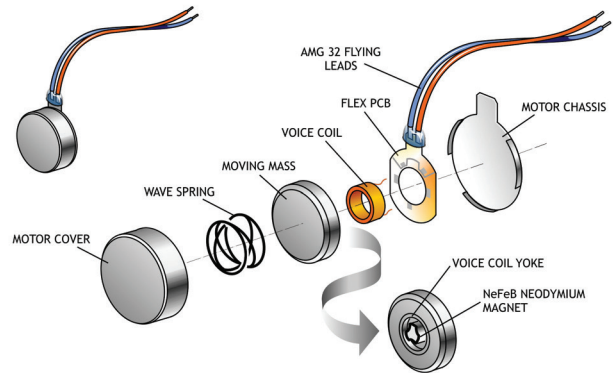
#### Smart Loop Architecture

- Automatic Overdrive – faster start time with controlled startup
- Automatic Braking – quicker stopping with active braking
- Automatic Level Calibration – provide consistent feel across actuators
- Actuator Diagnostics – easily check the status of the actuator

#### Auto-Resonance

- An LRA has a narrow operating bandwidth centered around the resonant frequency
- The LRA resonant frequency will vary due to numerous external factors including mounting position and acceleration (see graph to the left)
- TI's auto-resonance eliminates the need to know the resonant frequency
- Auto-resonance tracking provide consistent and strong vibration across all actuators

### Linear Resonant Actuator

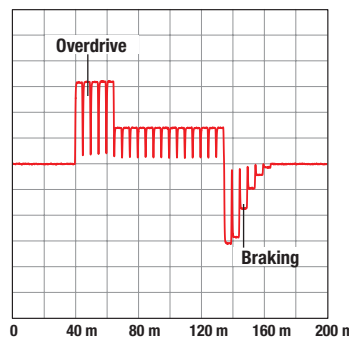


Images courtesy of Precision Microdrives

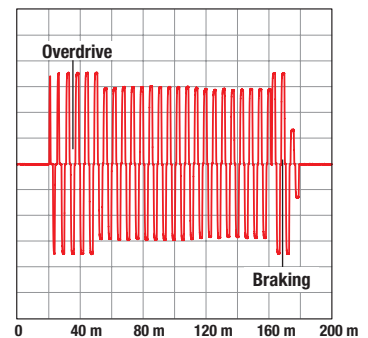
#### Linear Resonant Actuator

- Drive: AC, 2 Vrms
- An LRA has a resonant frequency due to the spring and mass mechanics; amplitude modulation is very easy
- Up to 2x more force and 50% less power with TI drivers

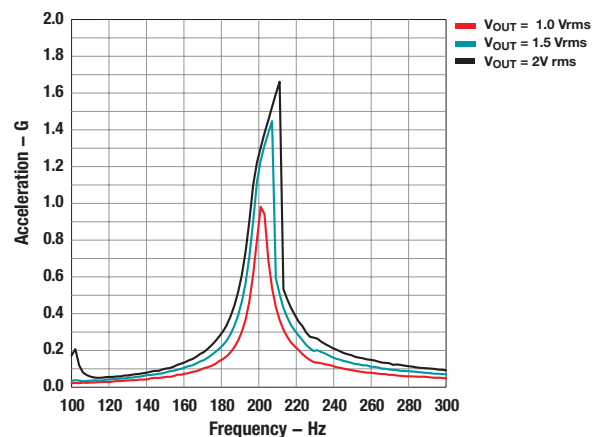
ERM Drive Waveform



LRA Drive Waveform



Vibration Strength vs Frequency



# Haptics

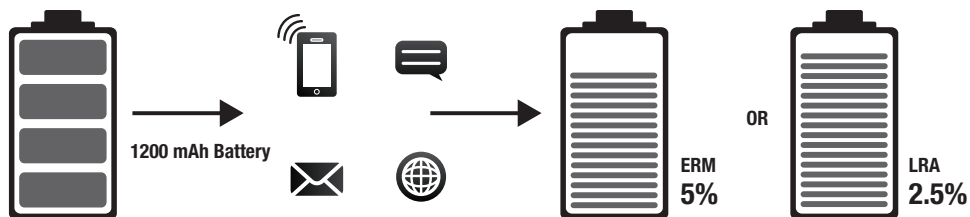
## Solutions for ERM and LRA Actuators

**Driver Selection Table**

Features	DRV2603	DRV2604	DRV2605	DRV2605 (1.8 V)
ERM and LRA Drive Modes	✓	✓	✓	✓
Drive Strength Independent of Supply	✓	✓	✓	✓
Efficient H-Bridge Driver Implementation	✓	✓	✓	✓
Automatic Input Level Translation	✓	✓	✓	✓
LRA Auto Resonance Tracking and Smart Loop	✓	✓	✓	✓
I <sup>2</sup> C Control for Device Parameters		✓	✓	✓
ERM Mode With Smart Loop		✓	✓	✓
Automatic Actuator Calibration and Diagnostic		✓	✓	✓
External Trigger Mode and Multi-Device Trigger		✓	✓	✓
Waveform RAM (2 kB)		✓		
Real-Time I <sup>2</sup> C Playback Mode		✓	✓	✓
Integrated Immersion Library			✓	✓
Audio-to-Haptics			✓	✓
1.8 V Support				✓
Package Type	QFN	WCSP	WCSP	QFN

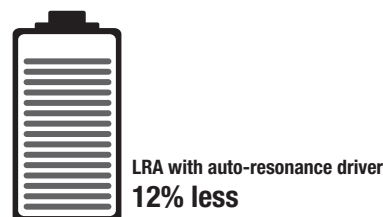
### Power Consumption

Starting with a 1200 mAh smartphone battery and running a typical use case scenario of phone calls, email, messaging, and browsing the power consumption results show that an **LRA consumes less power** and is inherently more efficient than an ERM.



### Effects of Auto-Resonance on Power Consumption

It was also found that an LRA consumes less power when driven intelligently by an auto-resonance driver versus a driver with static frequency control.



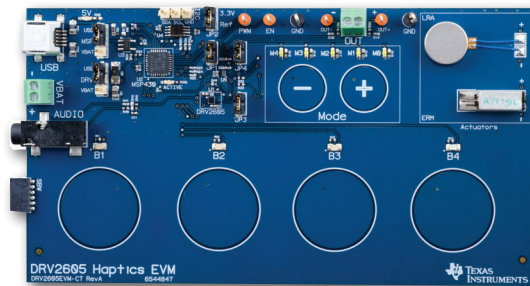
# Design Resources and Reference

E2E Touch Forum  
[ti.com/touchforum](http://ti.com/touchforum)



## ERM & LRA Evaluation Kits - \$99

- Demo or characterize the DRV2603, DRV2604, or DRV2605 using the CapSense evaluation kit
- Includes an ERM and LRA motor
- Trigger effects using the six MSP430 CapSense buttons
- Programmable MSP430 to create haptic waveforms and control the driver
- Available evaluation kits: DRV2603EVM-CT, DRV2604EVM-CT, and DRV2605EVM-CT



## ERM / LRA Applications

### Smartphone

- Add haptics to enhance the user interface
- Increase the performance of the existing silent alert actuators by adding haptics

### Tablet / E-reader

- Add advanced UI haptics to enhance the user experience
- Add more practical feedback to the capacitive touch button home keys on Windows 8® and Android™

### Accessories

- Capacitive touch mice with haptics
- Television remotes with haptics
- Laptop or free-standing mouse touch pads with haptics



See TI's complete portfolio of solutions for touch technology at [ti.com/touch](http://ti.com/touch)

- Innovative haptics products for touch-screen enabled devices
- Cool solutions for buttons, sliders, and wheels featuring MSP430
- Touch screen controllers for a broad range of performance options

The platform bar and E2E are trademarks of Texas Instruments.  
All other trademarks are the property of their respective owners.

© 2013 Texas Instruments Incorporated  
Printed in U.S.A. by Almaden Press, San Jose, CA



## IMPORTANT NOTICE

Texas Instruments Incorporated and its subsidiaries (TI) reserve the right to make corrections, enhancements, improvements and other changes to its semiconductor products and services per JESD46, latest issue, and to discontinue any product or service per JESD48, latest issue. Buyers should obtain the latest relevant information before placing orders and should verify that such information is current and complete. All semiconductor products (also referred to herein as "components") are sold subject to TI's terms and conditions of sale supplied at the time of order acknowledgment.

TI warrants performance of its components to the specifications applicable at the time of sale, in accordance with the warranty in TI's terms and conditions of sale of semiconductor products. Testing and other quality control techniques are used to the extent TI deems necessary to support this warranty. Except where mandated by applicable law, testing of all parameters of each component is not necessarily performed.

TI assumes no liability for applications assistance or the design of Buyers' products. Buyers are responsible for their products and applications using TI components. To minimize the risks associated with Buyers' products and applications, Buyers should provide adequate design and operating safeguards.

TI does not warrant or represent that any license, either express or implied, is granted under any patent right, copyright, mask work right, or other intellectual property right relating to any combination, machine, or process in which TI components or services are used. Information published by TI regarding third-party products or services does not constitute a license to use such products or services or a warranty or endorsement thereof. Use of such information may require a license from a third party under the patents or other intellectual property of the third party, or a license from TI under the patents or other intellectual property of TI.

Reproduction of significant portions of TI information in TI data books or data sheets is permissible only if reproduction is without alteration and is accompanied by all associated warranties, conditions, limitations, and notices. TI is not responsible or liable for such altered documentation. Information of third parties may be subject to additional restrictions.

Resale of TI components or services with statements different from or beyond the parameters stated by TI for that component or service voids all express and any implied warranties for the associated TI component or service and is an unfair and deceptive business practice. TI is not responsible or liable for any such statements.

Buyer acknowledges and agrees that it is solely responsible for compliance with all legal, regulatory and safety-related requirements concerning its products, and any use of TI components in its applications, notwithstanding any applications-related information or support that may be provided by TI. Buyer represents and agrees that it has all the necessary expertise to create and implement safeguards which anticipate dangerous consequences of failures, monitor failures and their consequences, lessen the likelihood of failures that might cause harm and take appropriate remedial actions. Buyer will fully indemnify TI and its representatives against any damages arising out of the use of any TI components in safety-critical applications.

In some cases, TI components may be promoted specifically to facilitate safety-related applications. With such components, TI's goal is to help enable customers to design and create their own end-product solutions that meet applicable functional safety standards and requirements. Nonetheless, such components are subject to these terms.

No TI components are authorized for use in FDA Class III (or similar life-critical medical equipment) unless authorized officers of the parties have executed a special agreement specifically governing such use.

Only those TI components which TI has specifically designated as military grade or "enhanced plastic" are designed and intended for use in military/aerospace applications or environments. Buyer acknowledges and agrees that any military or aerospace use of TI components which have **not** been so designated is solely at the Buyer's risk, and that Buyer is solely responsible for compliance with all legal and regulatory requirements in connection with such use.

TI has specifically designated certain components as meeting ISO/TS16949 requirements, mainly for automotive use. In any case of use of non-designated products, TI will not be responsible for any failure to meet ISO/TS16949.

### Products

Audio	<a href="http://www.ti.com/audio">www.ti.com/audio</a>
Amplifiers	<a href="http://amplifier.ti.com">amplifier.ti.com</a>
Data Converters	<a href="http://dataconverter.ti.com">dataconverter.ti.com</a>
DLP® Products	<a href="http://www.dlp.com">www.dlp.com</a>
DSP	<a href="http://dsp.ti.com">dsp.ti.com</a>
Clocks and Timers	<a href="http://www.ti.com/clocks">www.ti.com/clocks</a>
Interface	<a href="http://interface.ti.com">interface.ti.com</a>
Logic	<a href="http://logic.ti.com">logic.ti.com</a>
Power Mgmt	<a href="http://power.ti.com">power.ti.com</a>
Microcontrollers	<a href="http://microcontroller.ti.com">microcontroller.ti.com</a>
RFID	<a href="http://www.ti-rfid.com">www.ti-rfid.com</a>
OMAP Applications Processors	<a href="http://www.ti.com/omap">www.ti.com/omap</a>
Wireless Connectivity	<a href="http://www.ti.com/wirelessconnectivity">www.ti.com/wirelessconnectivity</a>

### Applications

Automotive and Transportation	<a href="http://www.ti.com/automotive">www.ti.com/automotive</a>
Communications and Telecom	<a href="http://www.ti.com/communications">www.ti.com/communications</a>
Computers and Peripherals	<a href="http://www.ti.com/computers">www.ti.com/computers</a>
Consumer Electronics	<a href="http://www.ti.com/consumer-apps">www.ti.com/consumer-apps</a>
Energy and Lighting	<a href="http://www.ti.com/energy">www.ti.com/energy</a>
Industrial	<a href="http://www.ti.com/industrial">www.ti.com/industrial</a>
Medical	<a href="http://www.ti.com/medical">www.ti.com/medical</a>
Security	<a href="http://www.ti.com/security">www.ti.com/security</a>
Space, Avionics and Defense	<a href="http://www.ti.com/space-avionics-defense">www.ti.com/space-avionics-defense</a>
Video and Imaging	<a href="http://www.ti.com/video">www.ti.com/video</a>

### TI E2E Community

[e2e.ti.com](http://e2e.ti.com)