

Optional on-board 5V
 jumper J491, J492, J493 to use

optional
 main 0.78V "stand-in"
 jumper J494-5-6 to use

12V_{in}
 Main Input
 GND

PMP22165A

J50 programming
 GND
 IRQB
 CTL4
 5V
 3V3 Good
 5V Good
 0.78V Good
 Interface to
 TPS53681EVM-002
 jumper to
 power down



For evaluation only; not FCC approved for resale

1.5V

GND

1.1V

GND

3.3V_{aux}

GND

0.88V

TP450

2.5V

GND

1.5V_{aux}

TP441

1.5V_{aux}

Isense

3.3V

TP410

GND

TP411

dyn_1.5V_{aux}

TP222

TP451

TP441

TP472

TP411

J471

R471

R472

R473

C471

C472

C473

C474

C475

C476

C477

C478

C479

C480

C481

C482

C483

C484

C485

C486

C487

C488

C489

C490

C491

C492

C493

C494

C495

C496

C497

C498

C499

C500

C501

C502

C503

C504

C505

C506

C507

C508

C509

C510

C511

C512

C513

C514

C515

C516

C517

C518

C519

C520

C521

C522

C523

C524

C525

C526

C527

C528

C529

C530

C531

C532

C533

C534

C535

C536

C537

C538

C539

C540

C541

C542

C543

C544

C545

C546

C547

C548

C549

C550

C551

C552

C553

C554

C555

C556

C557

C558

C559

C560

C561

C562

C563

C564

C565

C566

C567

C568

C569

C570

C571

C572

C573

C574

C575

C576

C577

C578

C579

C580

C581

C582

C583

C584

C585

C586

C587

C588

C589

C590

C591

C592

C593

C594

C595

C596

C597

C598

C599

C600

C601

C602

C603

C604

C605

C606

C607

C608

C609

C610

C611

C612

C613

C614

C615

C616

C617

C618

C619

C620

C621

C622

C623

C624

C625

C626

C627

C628

C629

C630

C631

C632

C633

C634

C635

C636

C637

C638

C639

C640

C641

C642

C643

C644

C645

C646

C647

C648

C649

C650

C651

C652

C653

C654

C655

C656

C657

C658

C659

C660

C661

C662

C663

C664

C665

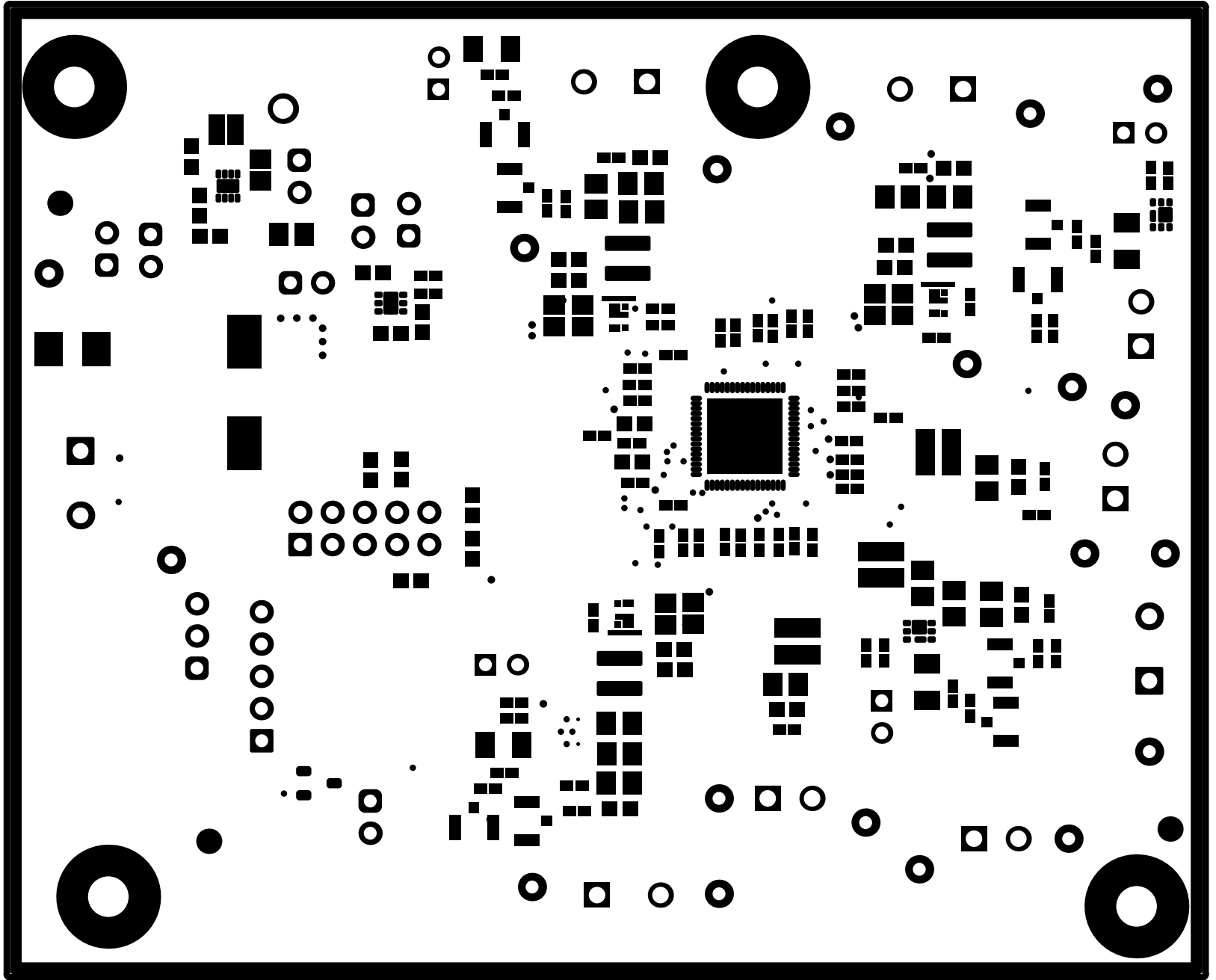
C666

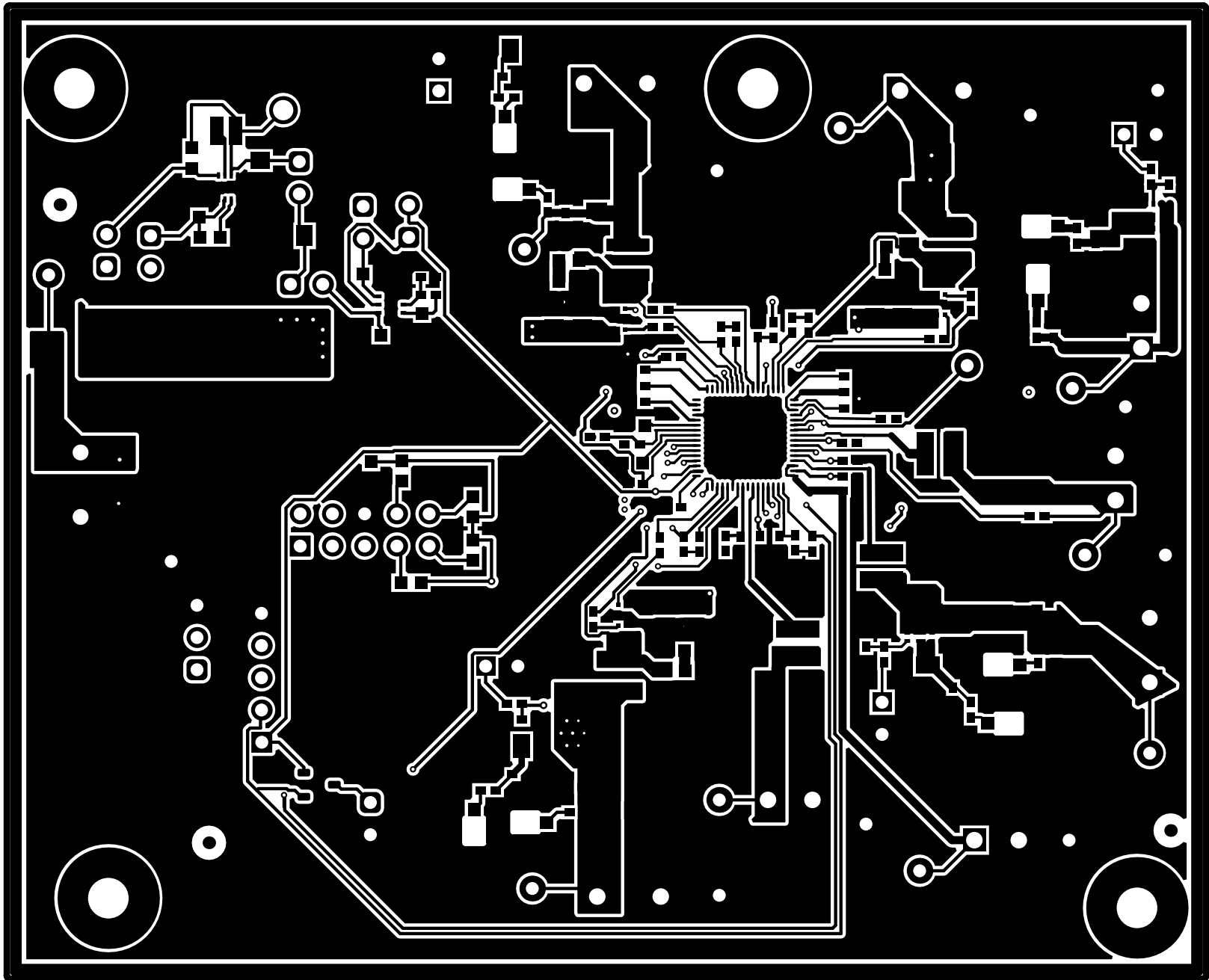
C667

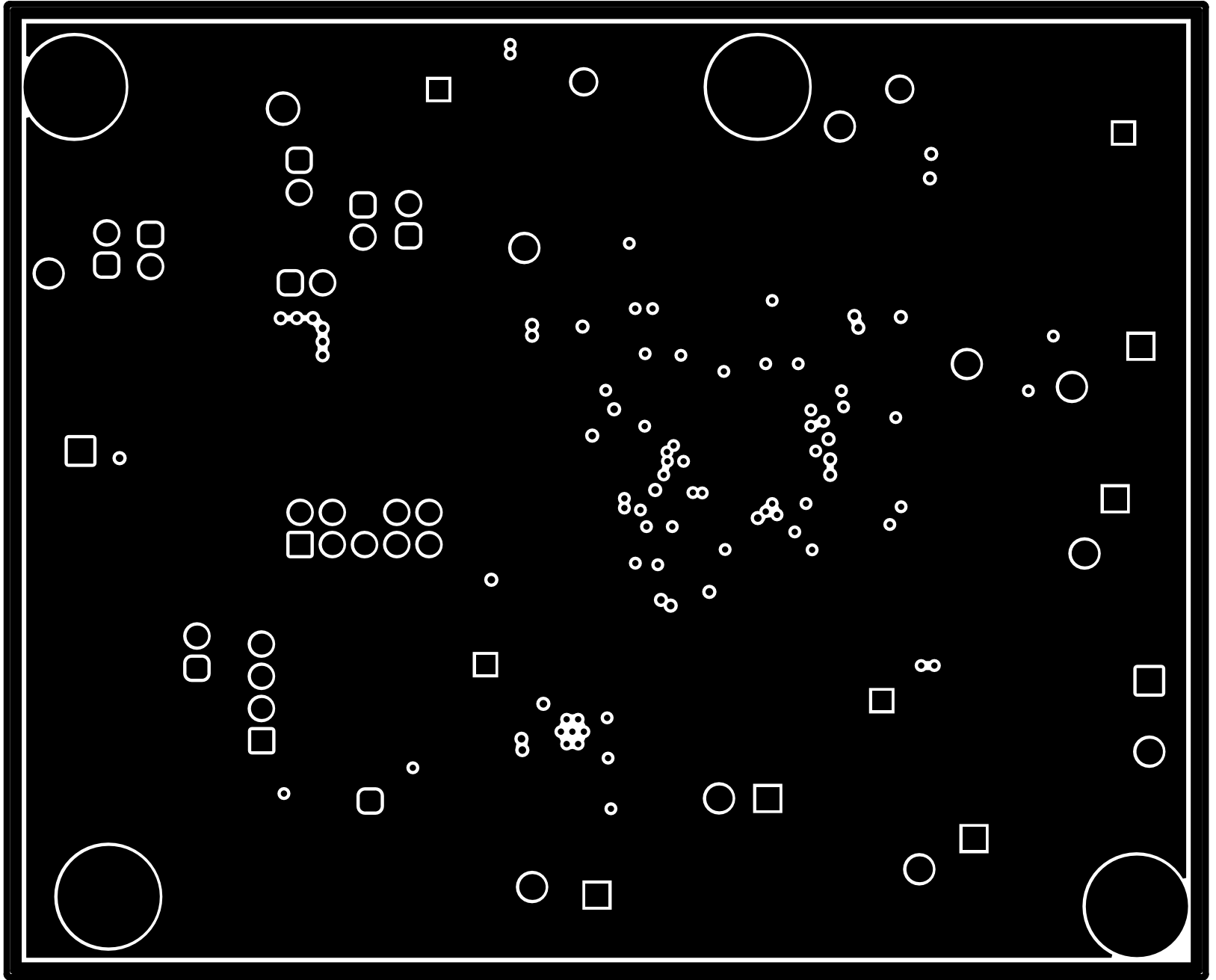
C668

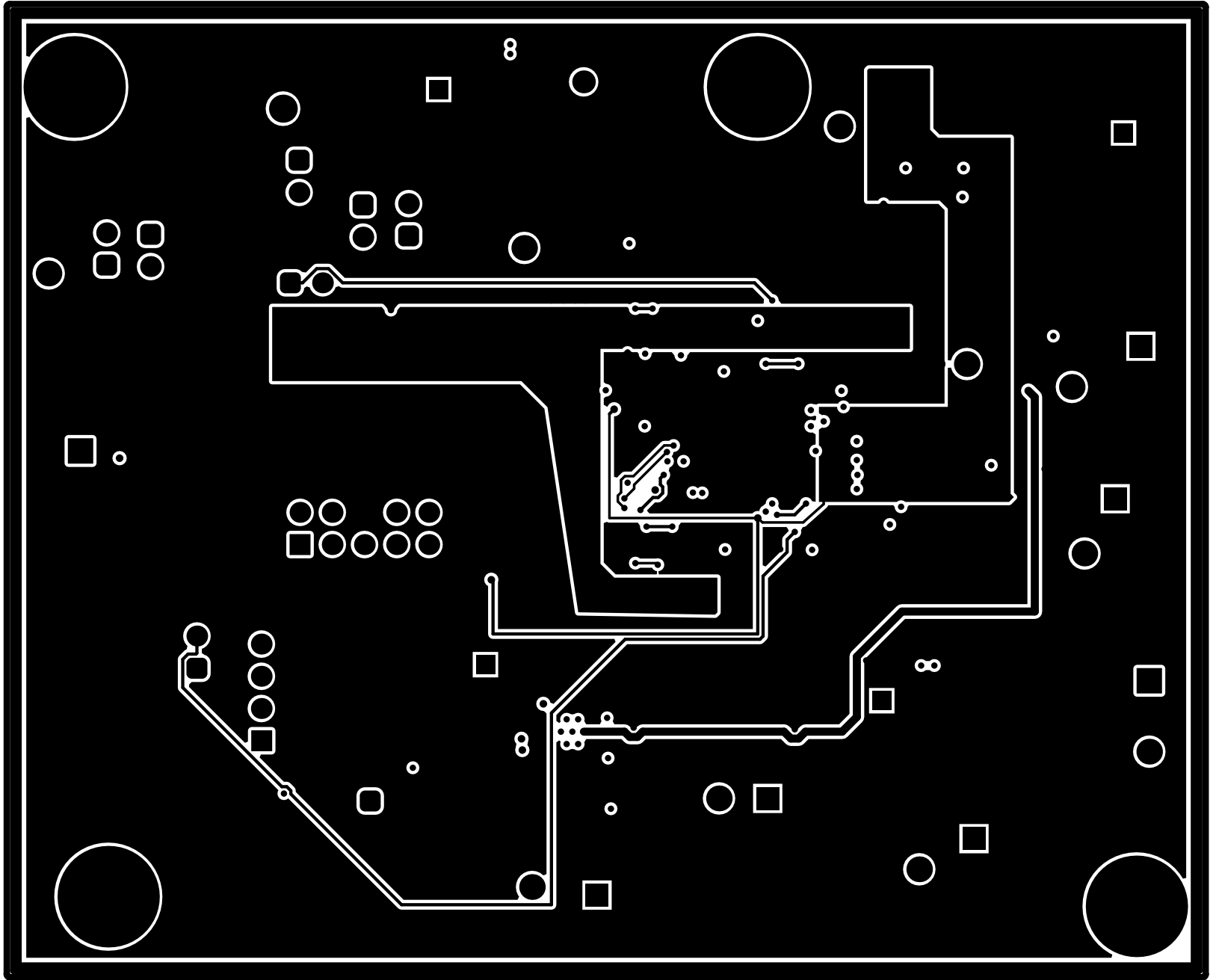
C669

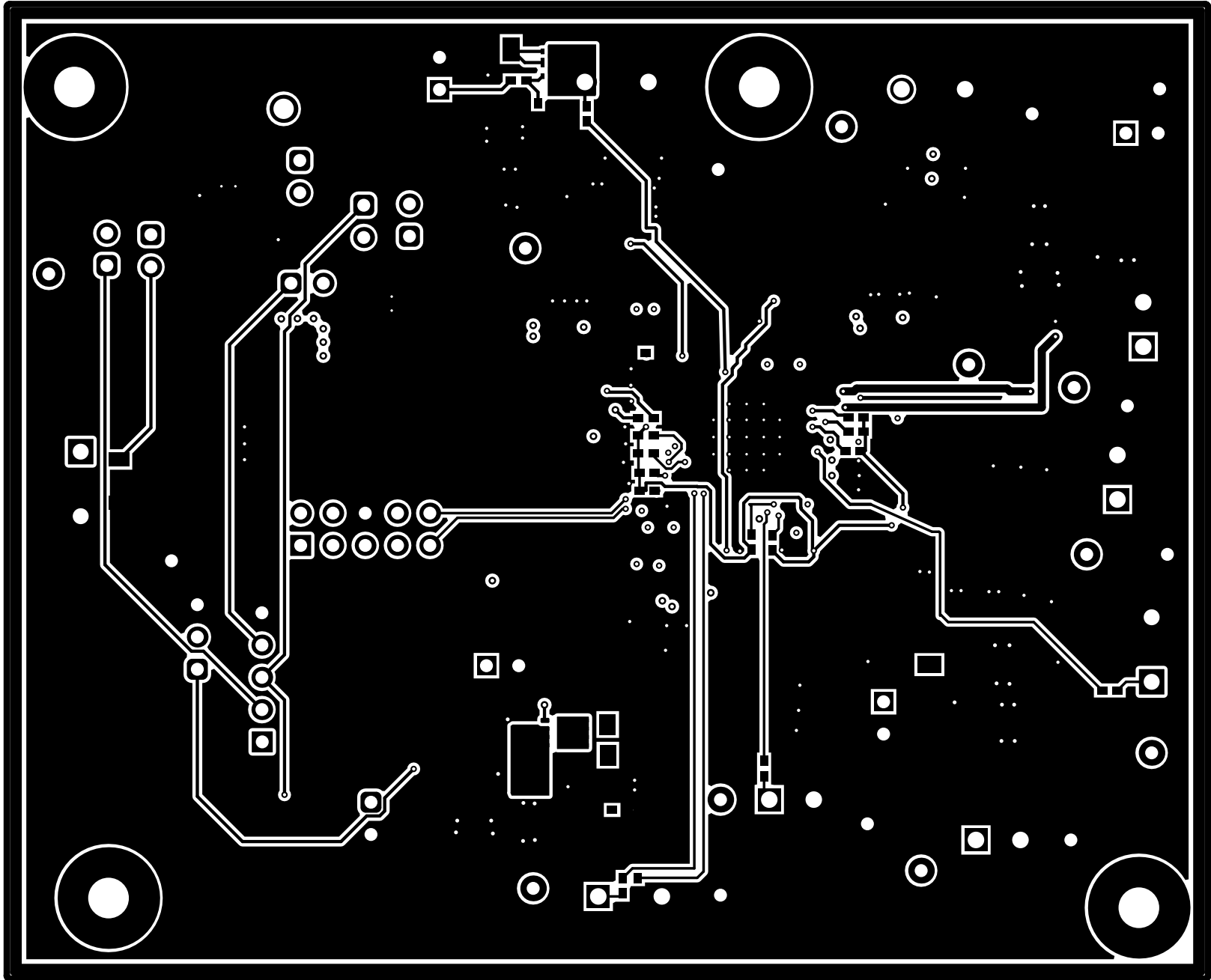
C670

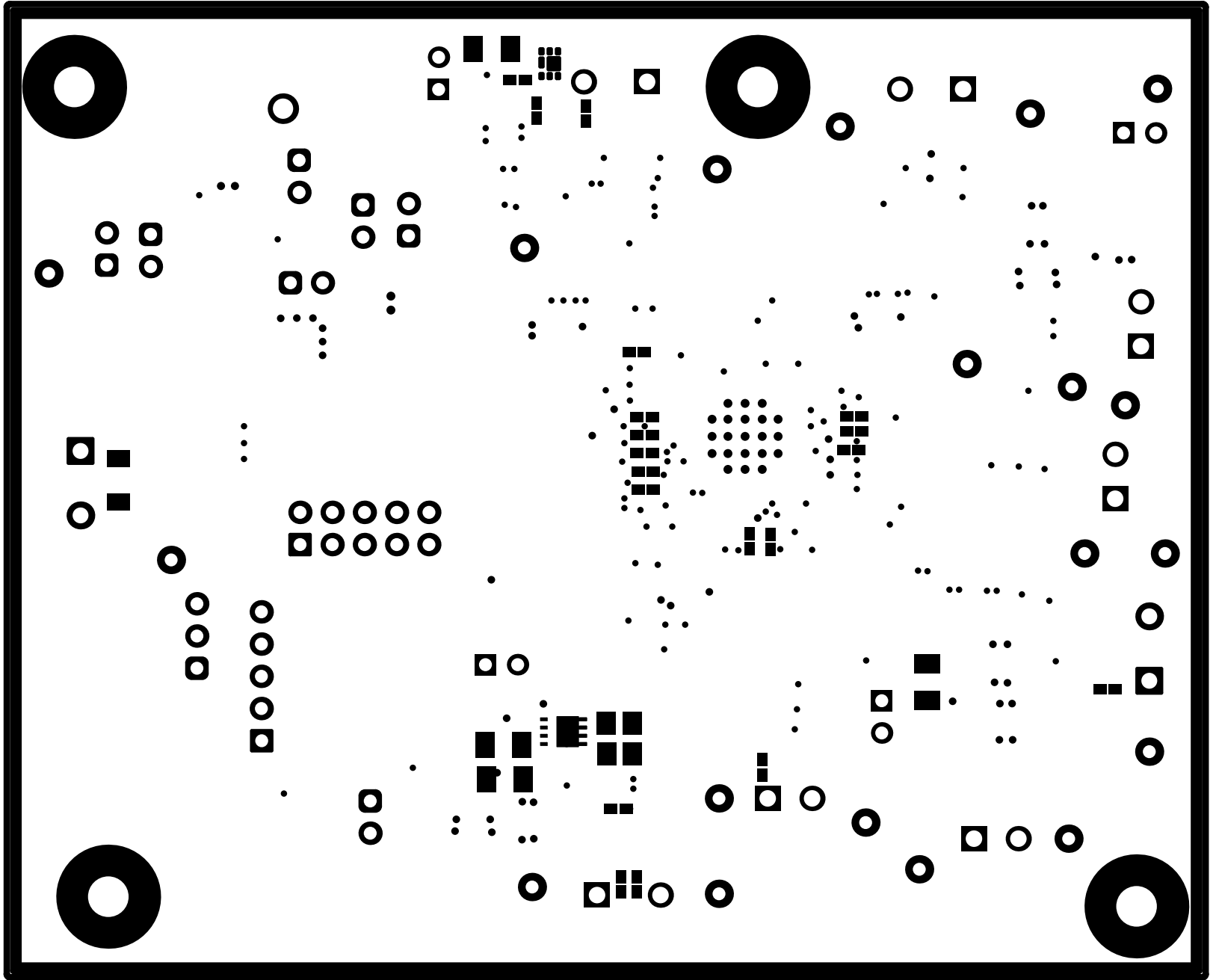


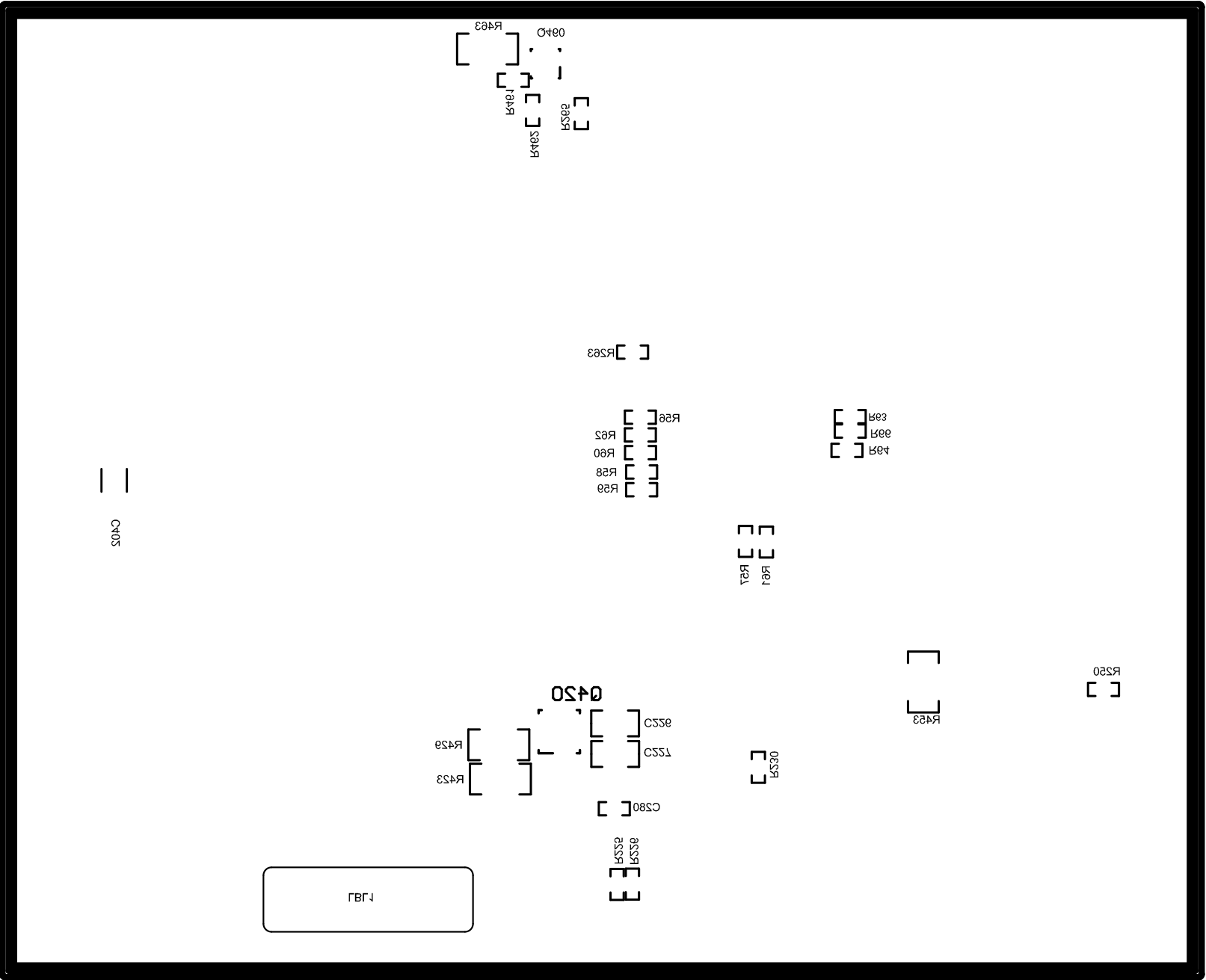






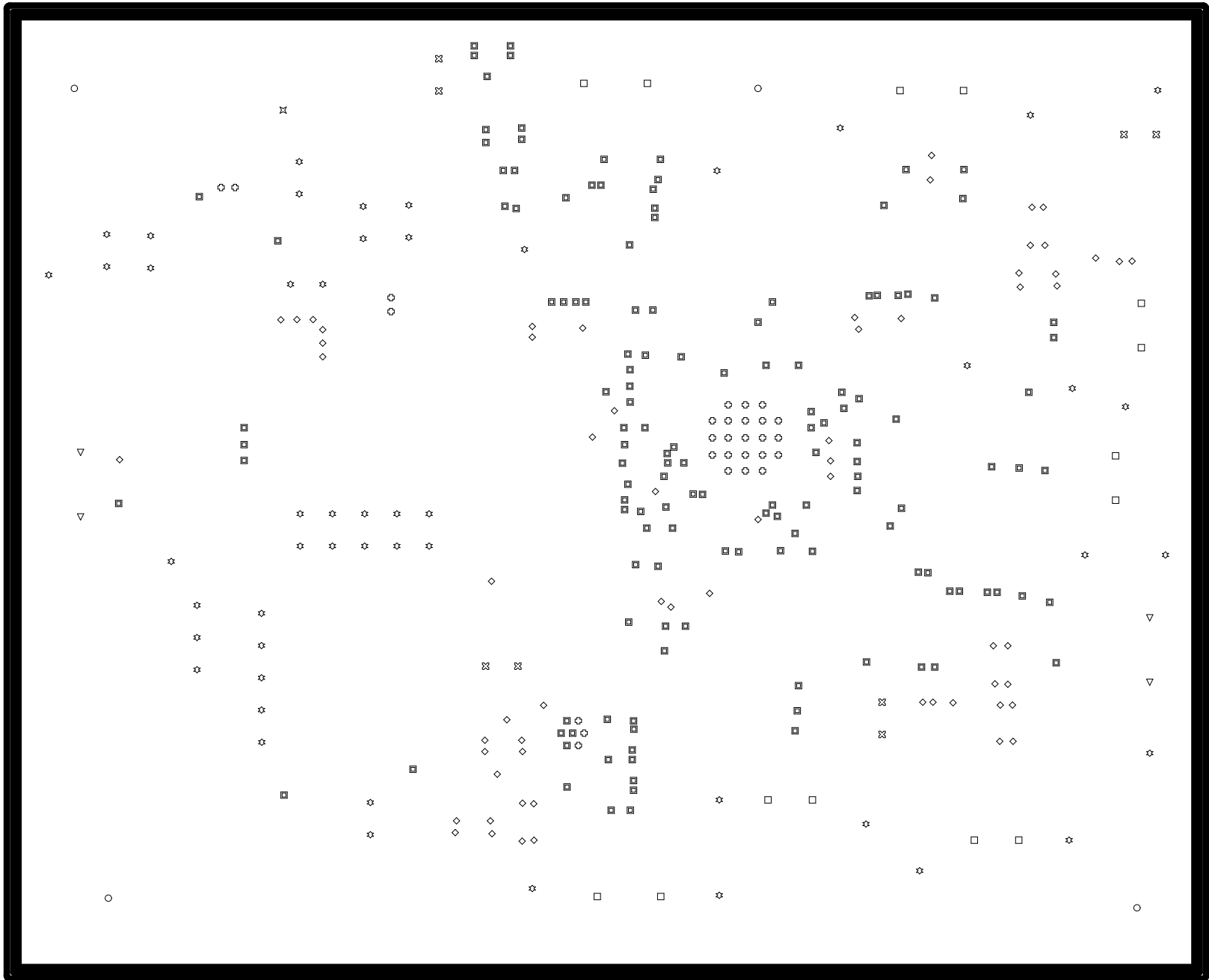






—
C405

ГВГЛ





3.00in

3.70in



1000.00mil

IMPORTANT NOTICE AND DISCLAIMER

TI PROVIDES TECHNICAL AND RELIABILITY DATA (INCLUDING DATASHEETS), DESIGN RESOURCES (INCLUDING REFERENCE DESIGNS), APPLICATION OR OTHER DESIGN ADVICE, WEB TOOLS, SAFETY INFORMATION, AND OTHER RESOURCES "AS IS" AND WITH ALL FAULTS, AND DISCLAIMS ALL WARRANTIES, EXPRESS AND IMPLIED, INCLUDING WITHOUT LIMITATION ANY IMPLIED WARRANTIES OF MERCHANTABILITY, FITNESS FOR A PARTICULAR PURPOSE OR NON-INFRINGEMENT OF THIRD PARTY INTELLECTUAL PROPERTY RIGHTS.

These resources are intended for skilled developers designing with TI products. You are solely responsible for (1) selecting the appropriate TI products for your application, (2) designing, validating and testing your application, and (3) ensuring your application meets applicable standards, and any other safety, security, or other requirements. These resources are subject to change without notice. TI grants you permission to use these resources only for development of an application that uses the TI products described in the resource. Other reproduction and display of these resources is prohibited. No license is granted to any other TI intellectual property right or to any third party intellectual property right. TI disclaims responsibility for, and you will fully indemnify TI and its representatives against, any claims, damages, costs, losses, and liabilities arising out of your use of these resources.

TI's products are provided subject to TI's Terms of Sale (www.ti.com/legal/termsofsale.html) or other applicable terms available either on ti.com or provided in conjunction with such TI products. TI's provision of these resources does not expand or otherwise alter TI's applicable warranties or warranty disclaimers for TI products.

Mailing Address: Texas Instruments, Post Office Box 655303, Dallas, Texas 75265
Copyright © 2020, Texas Instruments Incorporated