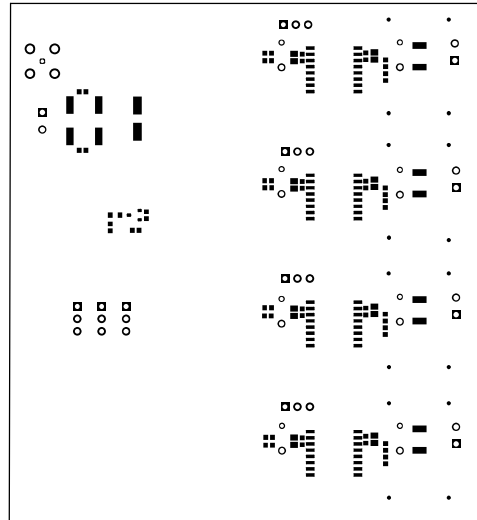
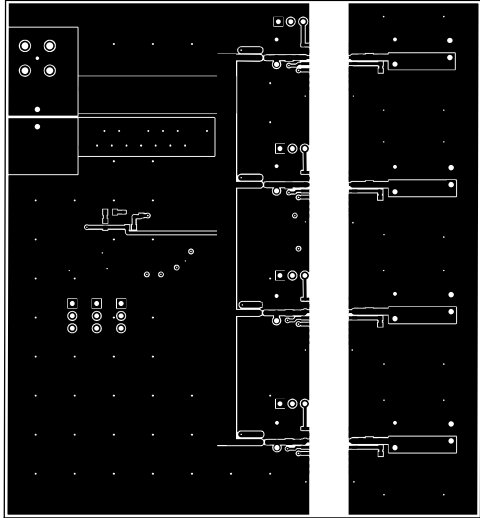


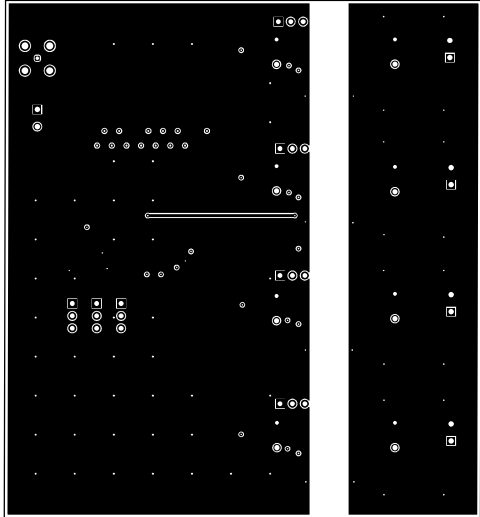
ALL NETWORK WIREDS FROM TOP SIDE	BOARD #	PMP22682	REV#	E3	SN REV	Not in version control
LAYER NAME = Top Overlay	TID #	N/A				
PLT NAME = Top Overlay	GENERATED	1	8/12/2021	16:26:53 PM	TEXAS INSTRUMENTS	



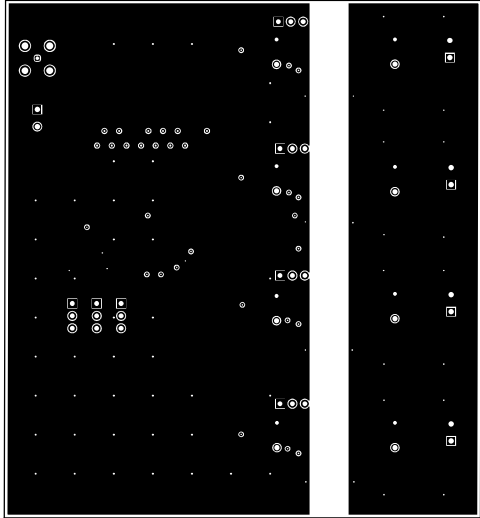
ALL NETWORK WIDENED FROM TOP SIDE	BOARD #:	PP22682	REV:	E3	SNK REV:	Not in version control
LAYER NAME =	Top Solder	TID #:	N/A			
PLAT NAME =	Top Solder Mask	GENERATED:	1	8/12/2021	10:26:54 PM	TEXAS INSTRUMENTS



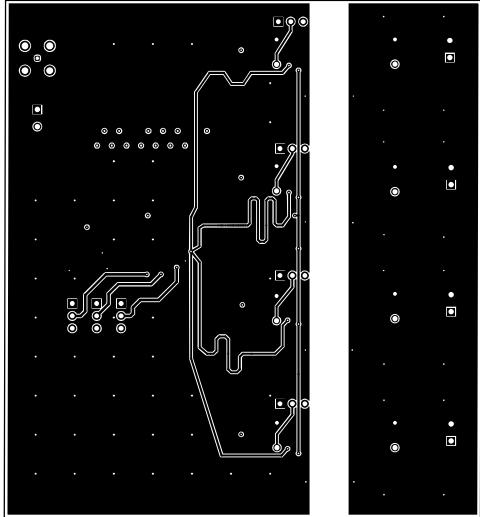
ALL NETWORK WIDED FROM TOP SIDE	BOARD #:	PP22682	REV:	E3	SN REM:	Not in version control
LAYER NAME = Top Layer	TID #:	N/A				
PLOT NAME = Top Layer	GENERATED:	1	8/12/2021	16:26:54 PM	TEXAS INSTRUMENTS	



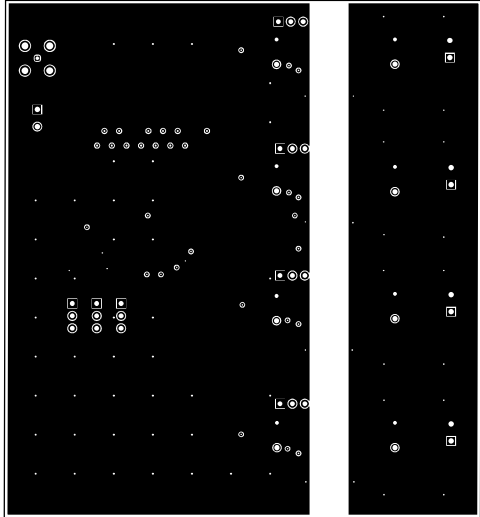
ALL MATH/DRG WIDED FROM TOP SIDE	BOARD #:	PPR22682	REV:	E3	BAR REV:	Not in version control
LAYER NAME =	TID #:	N/A				
PLOT NAME = Signal Layer 1	GENERATED:	1	8/12/2021	9:26:06 PM	TEXAS INSTRUMENTS	



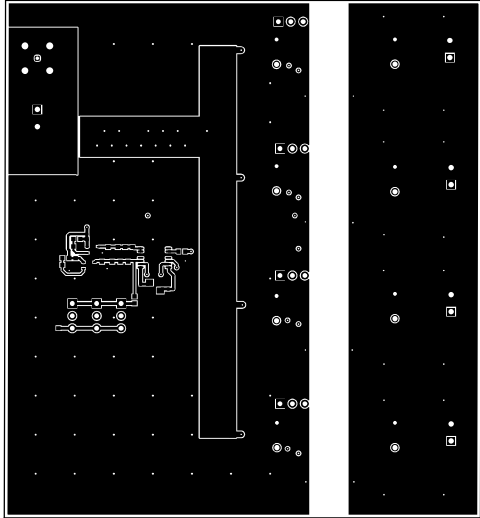
ALL NETWORK VIEWED FROM TOP SIDE	BOARD #:	PP22682	REV:	E3	BUR REV:	Not in version control
LAYER NAME =	TID #:	N/A				
PLOT NAME = Signal Layer 2	GENERATED:	8/12/2021	8:26:06 PM	TEXAS INSTRUMENTS		



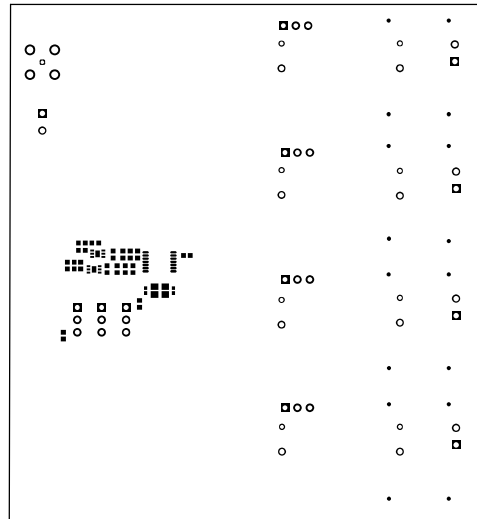
ALL MATH/DRG WEDGED FROM TOP SIDE	BOARD #:	PPR22682	REV:	E3	BAR REV:	Not in version control
LAYER NAME =	TID #:	N/A				
PLAT NAME = Signal Layer 3	GENERATED :	8/12/2021	9:29:56 PM	TEXAS INSTRUMENTS		



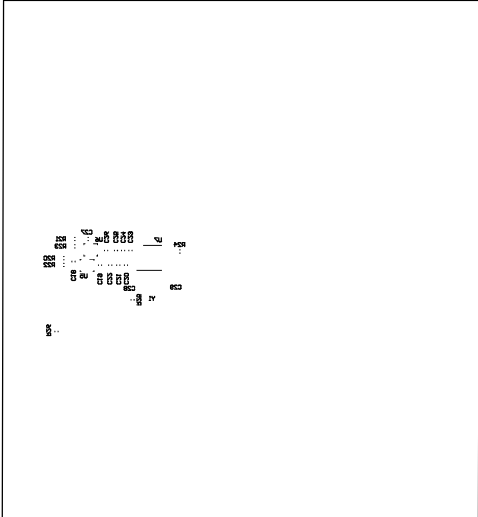
ALL MATH/DRG WEDGED FROM TOP SIDE	BOARD #:	PPR22682	REV:	E3	SNK REV:	Not in version control
LAYER NAME =	TID #:	N/A				
PLOT NAME = Signal Layer 4	GENERATED :	8/12/2021	9:29:56 PM	TEXAS INSTRUMENTS		



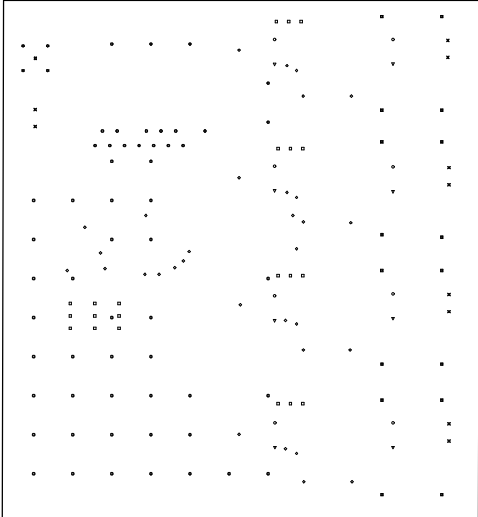
ALL NOTHINK WIDED FROM TOP SIDE	BOARD #:	PP22682	REV:	E3	BAR REV:	Not in version control
LAYER NAME =	Bottom Layer	TID #:	N/A			
PLAT NAME =	Bottom Layer	GENERATED :	8/12/2021	10:26:57 PM	TEXAS INSTRUMENTS	



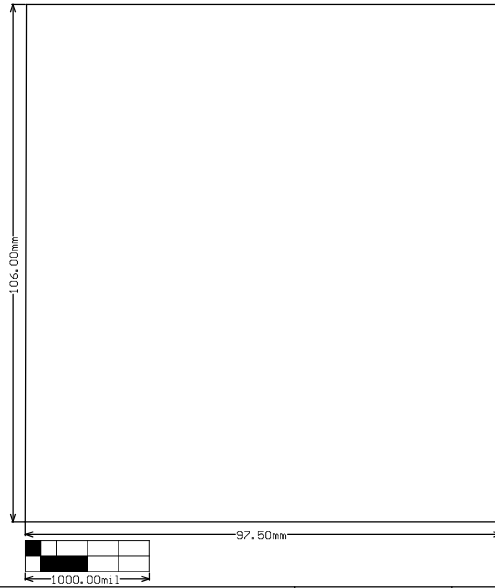
ALL NETWORK WIDED FROM TOP SIDE	BOARD #:	PPR22682	REV:	E3	SUN REV:	Not in version control
LAYER NAME =	Bottom Solder	TID #:	N/A			
PLAT NAME =	Bottom Solder Mask	GENERATED:	1	8/12/2021	10:26:57 PM	TEXAS INSTRUMENTS



ALL NOTHINK WIDED FROM TOP SIDE	BOARD #:	PP22682	REV:	E3	SUN REV:	Not in version control
LAYER NAME =	Bottom Overlay	TID #:	N/A			
PLAT NAME =	Bottom Overlay	GENERATED:	1	8/12/2021	10:26:08 PM	TEXAS INSTRUMENTS



ALL NETWORK WIEDED FROM TOP SIDE	BOARD #:	PPR22682	REV:	E3	SUN REV:	Not in version control
LAYER NAME =	Drill Drawing	TID #:	N/A			
PLOT NAME =	Drill Drawing	GENERATED :	8/12/2021	10:26:08 PM	TEXAS INSTRUMENTS	



ALL NETWORK VIEWED FROM TOP SIDE	BOARD #:	PPR22682	REV:	E3	SN REV:	Not in version control
LAYER NAME = PD Board Dimensions	TID #:	N/A				
PLT NAME = Board Dimensions	GENERATED:	1	8/12/2021	9:26:56 PM	TEXAS INSTRUMENTS	

IMPORTANT NOTICE AND DISCLAIMER

TI PROVIDES TECHNICAL AND RELIABILITY DATA (INCLUDING DATASHEETS), DESIGN RESOURCES (INCLUDING REFERENCE DESIGNS), APPLICATION OR OTHER DESIGN ADVICE, WEB TOOLS, SAFETY INFORMATION, AND OTHER RESOURCES "AS IS" AND WITH ALL FAULTS, AND DISCLAIMS ALL WARRANTIES, EXPRESS AND IMPLIED, INCLUDING WITHOUT LIMITATION ANY IMPLIED WARRANTIES OF MERCHANTABILITY, FITNESS FOR A PARTICULAR PURPOSE OR NON-INFRINGEMENT OF THIRD PARTY INTELLECTUAL PROPERTY RIGHTS.

These resources are intended for skilled developers designing with TI products. You are solely responsible for (1) selecting the appropriate TI products for your application, (2) designing, validating and testing your application, and (3) ensuring your application meets applicable standards, and any other safety, security, or other requirements. These resources are subject to change without notice. TI grants you permission to use these resources only for development of an application that uses the TI products described in the resource. Other reproduction and display of these resources is prohibited. No license is granted to any other TI intellectual property right or to any third party intellectual property right. TI disclaims responsibility for, and you will fully indemnify TI and its representatives against, any claims, damages, costs, losses, and liabilities arising out of your use of these resources.

TI's products are provided subject to TI's Terms of Sale (<https://www.ti.com/legal/termsofsale.html>) or other applicable terms available either on [ti.com](https://www.ti.com) or provided in conjunction with such TI products. TI's provision of these resources does not expand or otherwise alter TI's applicable warranties or warranty disclaimers for TI products.

Mailing Address: Texas Instruments, Post Office Box 655303, Dallas, Texas 75265
Copyright © 2021, Texas Instruments Incorporated