

## TI 设计: TIDA-01429

# 采用 CAN 的汽车分立式 SBC 预升压、后降压参考设计



### 说明

TIDA-01429 参考设计实施了一款分立式系统基础芯片 (SBC), 配有输出电压设置为 8V 的宽输入电压升压电路。升压电路连接有一个输出电压设置为 5V 的宽输入电压降压转换器 (用于为控制器局域网 (CAN) 收发器供电) 和一个紧凑型 3.3V 固定电压线性压降 (LDO) 稳压器 (用于为 C2000™ 微控制器 (MCU) 供电)。此设计已按照电波暗室 (ALSE) 方法进行了 CISPR 25 辐射发射测试, 采用电压方法进行了 CISPR 25 传导发射测试, 并根据 ISO 11452-4 进行了抗大电流注入 (BCI) 测试, 所有测试均在 CAN 通讯以 500KBPS 的速率下运行时进行。此设计是经过电磁兼容性 (EMC) 审查的 3 级电源树, 采用 CAN 参考设计, 可用于多种需要在低至 3.5V 的输入电压条件下运行的汽车应用。

### 资源

<a href="#">TIDA-01429</a>	设计文件夹
<a href="#">LM5022-Q1</a>	产品文件夹
<a href="#">TPS57140-Q1</a>	产品文件夹
<a href="#">TLV713P-Q1</a>	产品文件夹
<a href="#">TMS320F28030Q</a>	产品文件夹
<a href="#">TCAN1042V-Q1</a>	产品文件夹
<a href="#">SN74LVC2G06-Q1</a>	产品文件夹
<a href="#">SN74AHCT1G04-Q1</a>	产品文件夹
<a href="#">CSD17313Q2</a>	产品文件夹

### 特性

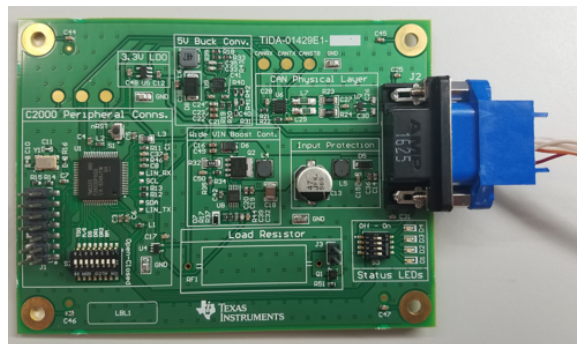
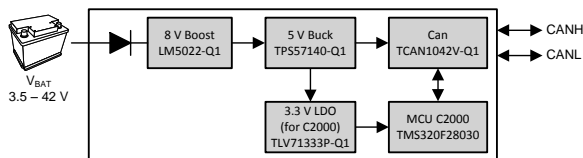
- 宽输入电压, 可调节升压控制器
- 宽输入电压, 可调节降压转换器
- 低输入电压, 固定 3.3V LDO
- 具有高达 5MBPS 灵活数据速率 (FD) 的 CAN 收发器
- 采用 ALSE 方法通过了 CISPR 25 5 类辐射发射测试
- 采用电压方法通过了 CISPR 25 4 类传导发射测试
- 通过了 ISO 11452-4 大电流注入测试
- 能够承受高达 40V 的负载突降电压
- 能够承受高达 -40V 的电池反向电压
- 通过将电池输入电压降至 3.5V 来维持稳定的 5V 和 3.3V 电源

### 应用范围

- 汽车车身控制模块 (BCM)
- 汽车前置摄像机
- 汽车音响主机



咨询我们的 E2E 专家





该 TI 参考设计末尾的重要声明表述了授权使用、知识产权问题和其他重要的免责声明和信息。

## 1 System Description

The TIDA-01429 reference design implements a 3-stage power tree. The first stage is a wide-input voltage boost controller with an output voltage set to 8.1 V. When the battery-supplied input voltage is greater than a diode drop above the set output voltage, the boost controller transitions to 0% duty cycle and the input voltage is passed through the high-side Schottky diode. Therefore, the output voltage of the boost controller during regulation will always be 8.1 V or higher. For this reason the second stage 5-V buck converter also needs to be a wide input voltage device. The 5-V supply is used for powering a CAN physical layer interface and a compact, low-input voltage LDO regulator for creating the 3.3-V rail for the C2000 MCU. This design has been tested for CISPR 25 radiated emissions per the ALSE method, CISPR 25 conducted emissions per the voltage method, and for immunity to BCI per ISO 11452-4. All of these EMC tests were performed with CAN communication operating at 500 KBPS. Therefore, this is an EMC-validated, 3-stage power tree with CAN reference design that can be used in many automotive applications requiring operation with input voltages as low as 3.5 V.

The necessity for multiple regulated supply rails is becoming more and more prevalent in automotive as more MCUs transition from 5 V to 3.3 V. The first-stage boost regulator of this design is strictly used for boosting the input voltage to the buck converter during low-voltage transients for start and stop or cold crank scenarios. During nominal vehicle battery voltages the device transitions to 0% duty cycle operation and the input voltage is passed to the output through the high-side, Schottky diode. The second stage buck regulator is a 1.5-A wide input voltage buck converter that takes the output from the first stage and regulates it down to 5 V. Lastly, the low-input voltage, 150-mA, fixed 3.3-V LDO is used to supply the MCU.

This reference design is an example implementation of how to create a 8.1-V intermediate supply, a 1.5-A, 5-V supply, and a 150-mA, 3.3-V supply that can handle battery input voltages down to 3.5 V. Example modules where this power topology and CAN interface can be applicable includes BCMS, multi-mode radar modules, front camera modules, and head unit modules. This design passes Class 5 radiated emissions using the ALSE method, Class 4 conducted emissions using the voltage method on both VBATT and GND, and ISO 11452-4 BCI with greater than 106 dB $\mu$ A of immunity routing VBATT, GND, CANH and CANL through the current injection probe.

An SBC is an integrated circuit (IC) that combines many typical building blocks of a system, which includes transceivers, linear regulators, and switching regulators. While these integrated devices can offer size and cost savings in a number of applications, the integrated devices do not work in every case. For applications where an SBC is not a good fit, it might be beneficial to build a discrete implementation of these aforementioned building blocks thus making a *discrete SBC*.

### 1.1 Key System Specifications

表 1. Key System Specifications

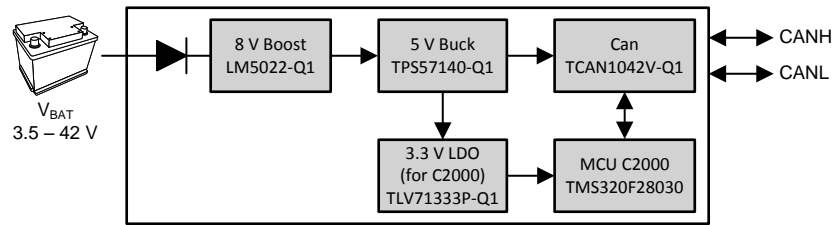
PARAMETER	SPECIFICATIONS	DETAILS
Input power source (VBATT)	Automotive 12-V battery system	节 2.3.1
Operational input voltage range (VBATT)	3.5 V to 40 V	节 2.3.2
Survivable input voltage range (VBATT)	-40 V to 40 V	节 2.3.1
Regulated output voltages	5.0 V and 3.3 V	节 2.3.2 and 节 2.3.3

**表 1. Key System Specifications (continued)**

PARAMETER	SPECIFICATIONS	DETAILS
Maximum 5-V load current	1.5 A	<a href="#">节 2.3.2</a>
Maximum 3.3-V load current	150 mA	<a href="#">节 2.3.3</a>
Form factor	Rectangular, 4.0" × 3.0" (101.6 mm × 76.2 mm), 2-layer, 1-oz copper foil, printed circuit board (PCB)	<a href="#">节 3.1.1.1</a> and <a href="#">4.3 节</a>

## 2 System Overview

### 2.1 Block Diagram



Copyright © 2017, Texas Instruments Incorporated

图 1. TIDA-01429 Block Diagram

### 2.2 Highlighted Products

The TIDA-01429 TI Design features the following eight devices:

1. LM5022-Q1: Automotive, wide-input voltage, non-synchronous, step-up, DC-DC controller
2. TPS57140-Q1: Automotive, wide-input voltage, non-synchronous, step-down, DC-DC converter
3. TLV71333P-Q1: Automotive, low-input voltage, fixed 3.3-V LDO
4. TCAN1042V-Q1: Automotive fault-protected CAN transceiver with CAN FD and IO level shifting
5. TMS320F28030Q: Automotive, high-efficiency 32-bit Piccolo™ MCU
6. SN74LVC2G06-Q1: Automotive, catalog, dual-inverter buffer and driver with open-drain outputs
7. SN74AHCT1G04-Q1: Automotive, 5 V, single inverter gate with transistor-transistor logic (TTL) input thresholds
8. CSD17313Q2: 30-V N-channel, NexFET™ power MOSFET

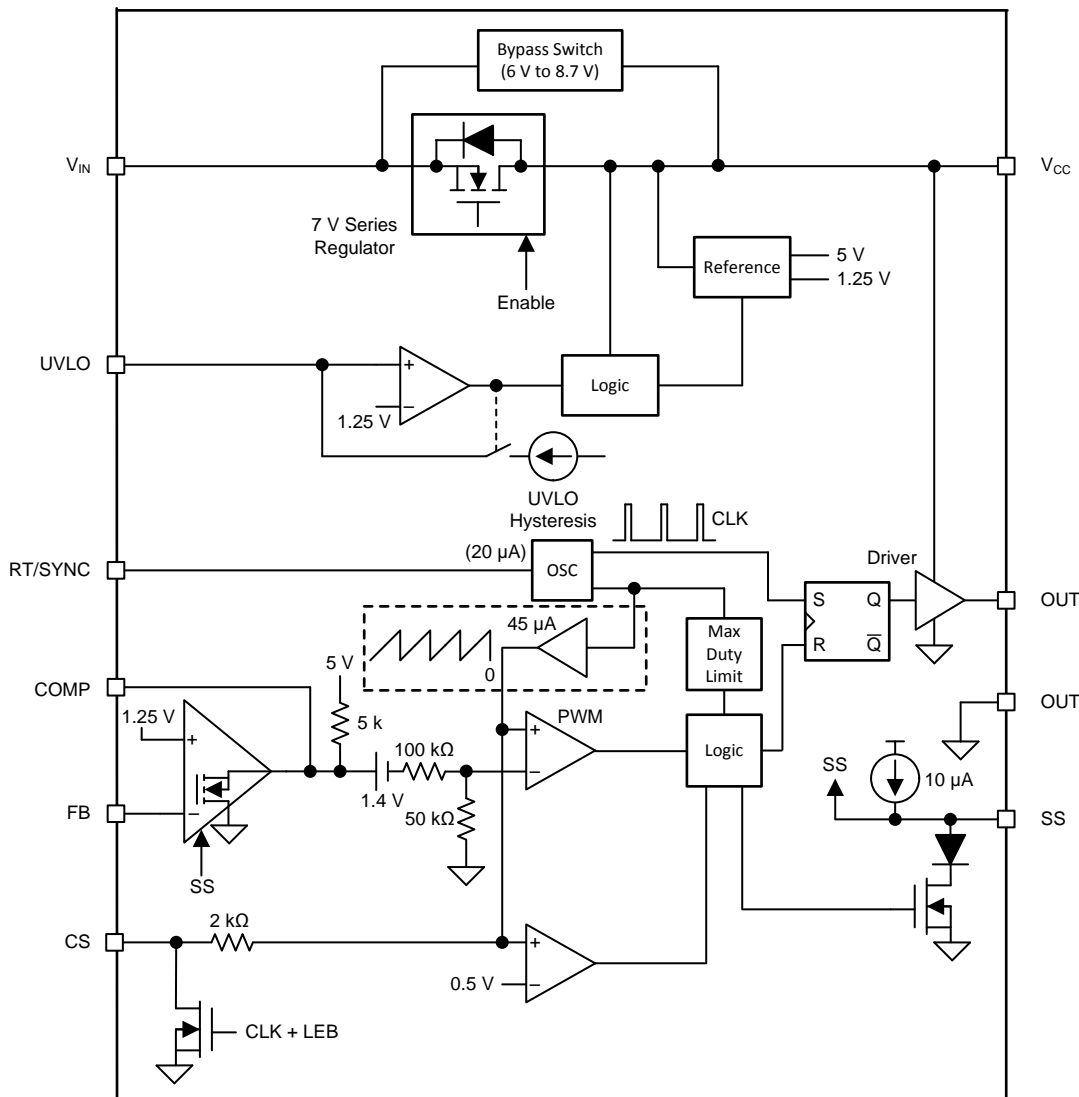
For more information on each of these devices, see their respective datasheets in 5 节 or product folders on [www.ti.com](http://www.ti.com).

### 2.2.1 LM5022-Q1

The LM5022-Q1 is a high-voltage, low-side, N-channel MOSFET controller ideal for use in boost and SEPIC regulators. The device contains all of the features needed to implement single-ended primary topologies. Output voltage regulation is based on current-mode control, which eases the design of loop compensation while providing inherent input voltage feed-forward.

The LM5022-Q1 includes a start-up regulator that operates over a wide-input range of 6 V to 60 V. The pulse width modulation (PWM) controller is designed for high-speed capability, which includes an oscillator frequency range up to 2.2 MHz and total propagation delays less than 100 ns. Additional features include an error amplifier, precision reference, line undervoltage lockout, cycle-by-cycle current limit, slope compensation, soft-start, external synchronization capability, and thermal shutdown. The LM5022-Q1 is available in the 10-pin VSSOP package.

图 2 shows a block diagram of the device.



Copyright © 2017, Texas Instruments Incorporated

图 2. LM5022-Q1 Block Diagram

Additional features:

- AEC-Q100 grade 1 qualified for automotive applications
- Wide operating input voltage: 6 V to 60 V (down to 3 V after startup)
- 1-A peak MOSFET gate drive current
- Duty cycle limit of 90%
- Single resistor oscillator frequency set
- Adjustable switching frequency up to 2.2 MHz
- External clock synchronization
- Programmable UVLO with hysteresis
- Cycle-by-cycle current limit
- Slope compensation
- Adjustable soft start
- Internal compensation, soft start, current limit, and UVLO
- 10-lead, 3-mm × 3-mm VSSOP Package

### 2.2.2 TPS57140-Q1

The TPS57140-Q1 device is a 42-V, 1.5-A, step-down regulator with an integrated, high-side MOSFET. Current-mode control provides simple external compensation and flexible component selection. A low-ripple, pulse-skip mode reduces the no-load, regulated output supply quiescent current to 116  $\mu$ A. When the enable pin is in the low state, the shutdown current is reduced to 1.5  $\mu$ A.

Undervoltage lockout is internally set at 2.5 V but can be increased using the enable pin. The output voltage startup ramp is controlled by the slow-start pin that can also be configured for sequencing or tracking. An open-drain, power-good signal indicates when the output is within 92% to 109% of its nominal voltage. This output can be used for sequencing a second regulator or driving the reset input pin of a MCU.

A wide switching-frequency range allows optimization of efficiency and external component size. Frequency foldback and thermal shutdown protect the part during an overload condition. The TPS57140-Q1 is available in a 10-pin thermally enhanced MSOP-PowerPAD™ package (DGQ) and a 10-pin VSON package (DRC). This design uses the 10-pin leadless VSON package.

图 3 shows a block diagram of the device.

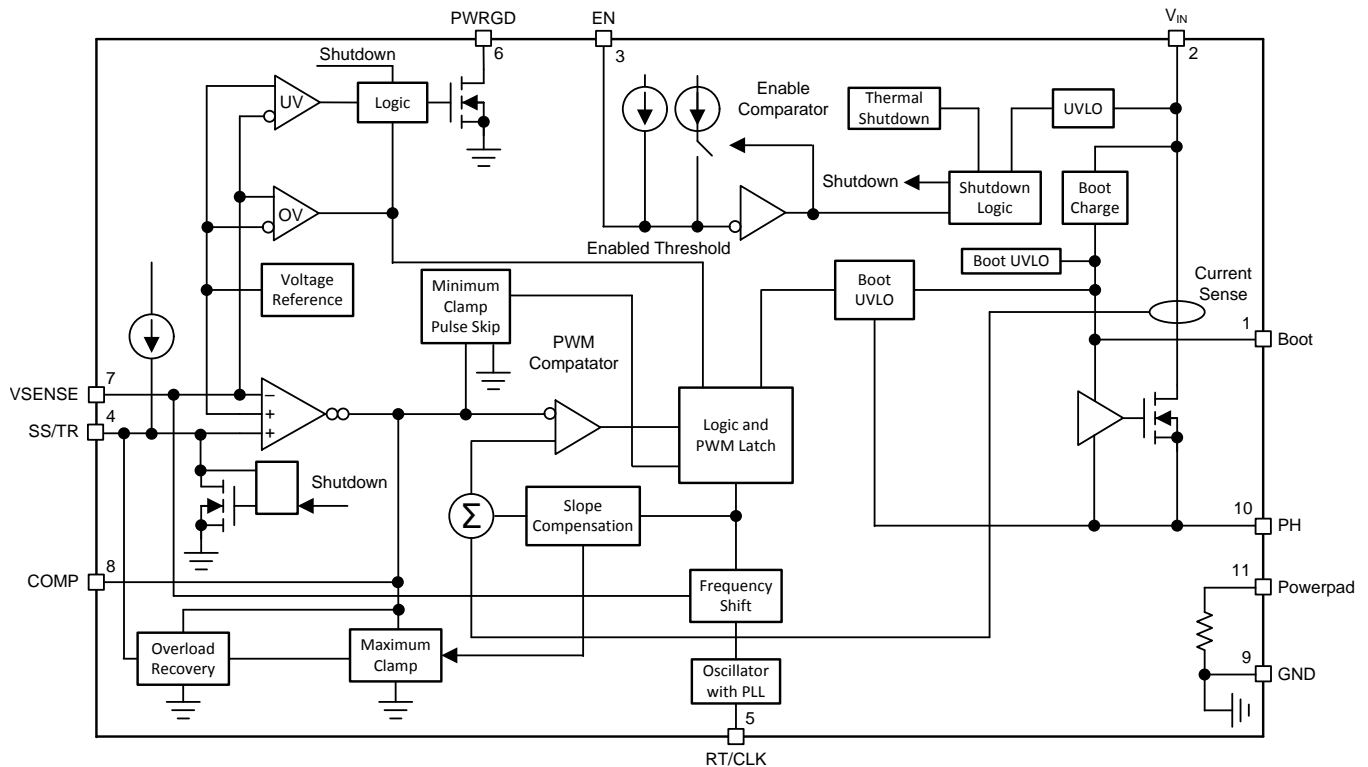


图 3. TPS57140-Q1 Block Diagram

Additional features:

- AEC-Q100 Grade 1 qualified for automotive applications
- 3.5-V to 42-V input voltage range
- 200-mΩ high-side MOSFET
- High efficiency at light loads with pulse-skipping Eco-mode™ control scheme
- 116-μA operating quiescent current
- 1.5-μA shutdown current
- 100-kHz to 2.5-MHz switching frequency
- Synchronizes to external clock
- Adjustable slow start and sequencing
- Undervoltage and overvoltage power-good output
- Adjustable undervoltage lockout voltage and hysteresis
- 0.8-V internal voltage reference
- Available in a 10-pin MSOP-PowerPAD package (DGQ) and a 10-pin VSON package (DRC)

### 2.2.3 TLV7133P-Q1

The TLV713P-Q1 series of LDO linear regulators are low-quiescent current LDOs with excellent line and load transient performance and are designed for power-sensitive applications. These devices provide a typical accuracy of 1%. Additionally, the TLV713P-Q1 family of devices are designed to be stable without an output capacitor enabling a very small solution size but remain stable with any output capacitor if one is used.

The TLV713P-Q1 also provides inrush current control during device power-up and enabling. The TLV713P-Q1 limits the input current to the defined current limit to avoid large currents from flowing from the input power source. This functionality is especially important in battery-operated devices.

The TLV713P-Q1 series is available in a standard SOT23 5-pin DBV package and provides an active pulldown circuit to quickly discharge output loads. The TLV713P-Q1 is suited for automotive applications with AEC-Q100 grade 1 qualification.

图 4 shows a block diagram of the device.

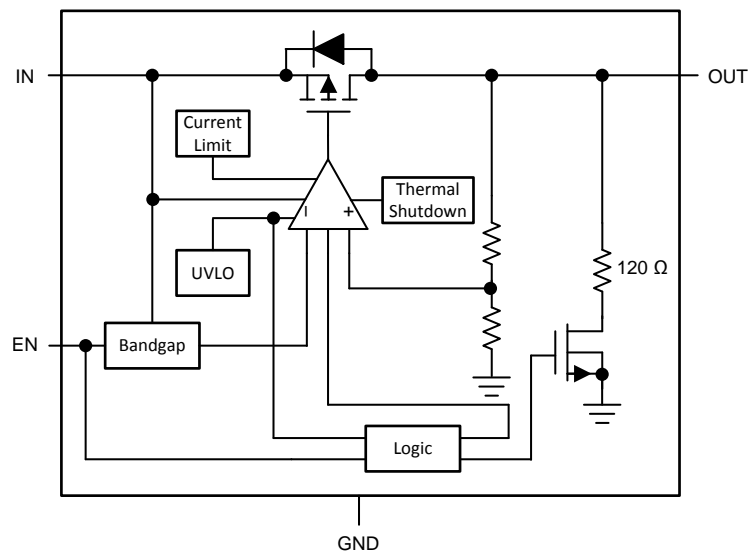


图 4. TLV713P-Q1 Block Diagram

Additional features:

- AEC-Q100 Grade 1 qualified for automotive applications
- Input voltage range up to 5.5 V
- Stable operation with or without capacitors
- Frequency foldback and overcurrent protection
- Very low dropout: 230 mV at 150 mA
- Accuracy: 1%
- Low IQ: 50  $\mu$ A
- Available in fixed-output voltages from 1 V to 3.3 V
- High PSRR: 65 dB at 1 kHz
- Active output discharge
- Available in a 5-pin SOT-23 package (DBV)



## 2.2.4 TCAN1042V-Q1

This TCAN1042 family is a CAN transceiver family that meets the ISO11898-2 (2016) high-speed CAN physical layer standard. All devices are designed for use in CAN FD networks up to 2 Mbps. Devices with part numbers that include the *G* suffix are designed for data rates up to 5 Mbps, and versions with the *V* suffix have a secondary power supply input for IO level shifting the input pin thresholds and RXD output level. This family has a low power standby mode with remote wake request feature. Additionally, all devices include protection features to enhance device and network robustness including a TXD dominant state timeout, thermal shutdown, undervoltage lockout, short circuit current limiting, and internal pull ups for critical floating input terminals.

图 5 shows a block diagram of the device.

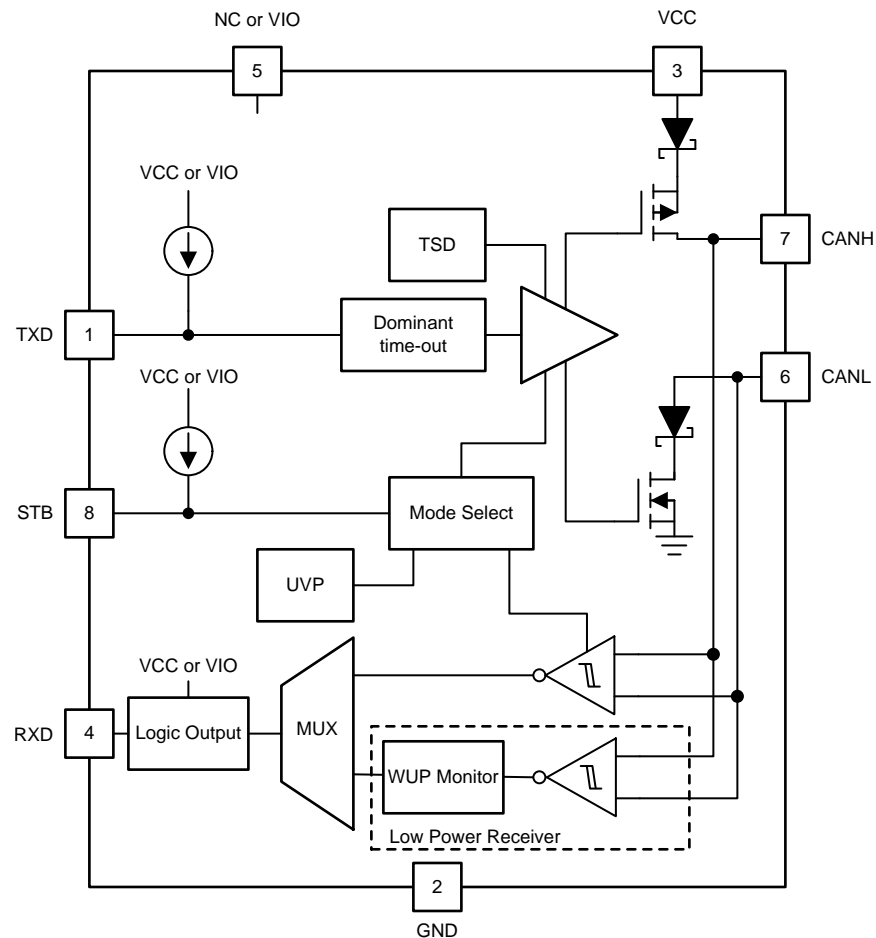


图 5. TCAN1042-Q1 Family Block Diagram

Additional features:

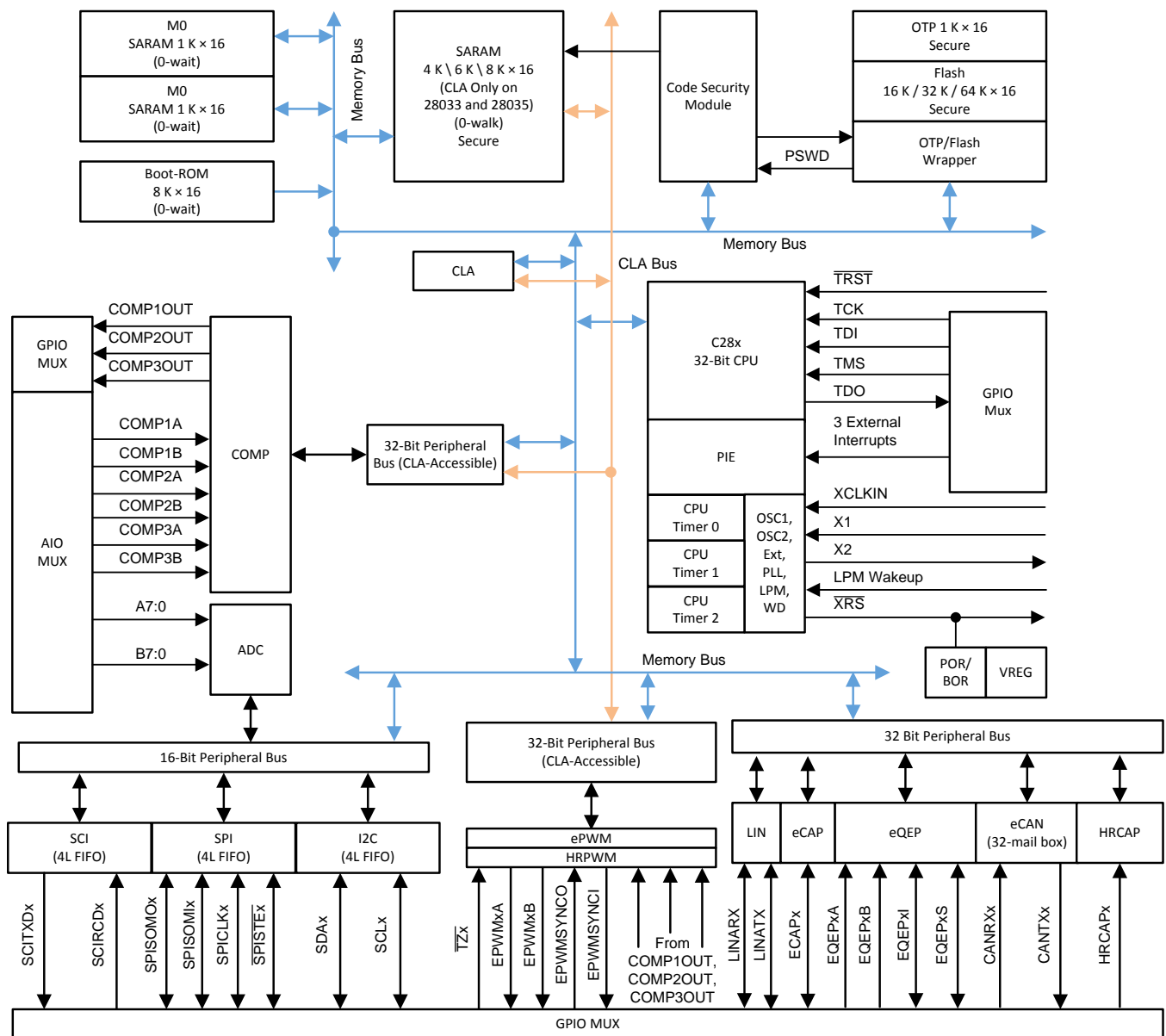
- AEC-Q100 qualified for automotive applications
- Meets the ISO 11898-2:2016 and ISO 11898-5:2007 physical layer standards
- All devices support classic CAN and 2 Mbps CAN FD and G versions support 5 Mbps
- Short and symmetrical propagation delay times and fast-loop times for enhanced timing margin
- IO voltage range supports 3.3-V and 5-V MCUs
- Ideal passive behavior when unpowered
- IEC ESD protection up to  $\pm 15$  kV
- Bus fault protection:  $\pm 58$  V (non-H variants) and  $\pm 70$  V (H variants)
- Undervoltage protection on  $V_{CC}$  and  $V_{IO}$  (V variants only) supply terminals
- Driver dominant time out (TXD DTO) supporting data rates down to 10 kbps
- Thermal shutdown protection (TSD)
- Receiver common mode input voltage:  $\pm 30$  V
- Typical loop delay: 110 ns
- Junction temperatures from  $-55^{\circ}\text{C}$  to  $150^{\circ}\text{C}$

- Available in SOIC(8) package and leadless VSON(8) package (3.0 mm × 3.0 mm) with automated optical inspection (AOI) capability

### 2.2.5 TMS320F28030PAGQ

The F2803x Piccolo family of MCUs provide the power of the C28x core and control law accelerator (CLA) coupled with highly-integrated control peripherals in low pin-count devices. This family is code-compatible with previous C28x-based code and also provides a high level of analog integration. An internal voltage regulator allows for single-rail operation. Enhancements have been made to the HRPWM to allow for dual-edge control (frequency modulation). Analog comparators with internal 10-bit references have been added and can be routed directly to control the PWM outputs. The ADC converts from 0 to 3.3-V fixed, full-scale range and supports ratio-metric VREFHI and VREFLO references.

图 6 shows a block diagram of the device.



Copyright © 2017, Texas Instruments Incorporated

图 6. TMS320F28030PAGQ Block Diagram

- 60 MHz, 32-bit, floating-point, high-efficiency, CPU (TMS320C28x)
- 128-bit security key and lock
- Single, 3.3-V supply with no power sequencing requirement
- Integrated power-on reset and brown-out reset
- Clocking: two internal zero-pin oscillators, on-chip crystal oscillator, and external clock input
- Up to 45 individually programmable, multiplexed GPIO pins with input filtering
- Peripheral interrupt expansion (PIE) block that supports all peripheral interrupts
- Three 32-bit CPU timers and a watchdog timer module
- On-chip Flash, SARAM, OTP, and boot ROM available
- Serial port peripherals:
  - One serial communications interface (SCI) universal asynchronous receiver/transmitter (UART) module
  - Two serial peripheral interface (SPI) modules
  - One inter-integrated-circuit (I2C) module
  - One local interconnect network (LIN) module
  - One enhanced controller area network (eCAN) module
- Enhanced control peripherals
  - ePWM
  - High-resolution PWM (HRPWM)
  - Enhanced capture (eCAP) module
  - High-resolution input capture (HRCAP) module
  - Enhanced quadrature encoder pulse (eQEP) module
  - Analog-to-digital converter (ADC)
  - On-chip temperature sensor
  - On-chip comparator
- Available in 56-pin VQFN, 64-pin TQFP, and 80-pin LQFP packages

### 2.2.6 SN74LVC2G06-Q1

The SN74LVC2G06-Q1 is a dual-inverter buffer and driver IC that is designed for 1.65-V to 5.5-V VCC operation. The SN74LVC2G06-Q1 device has two open-drain outputs that can be connected to other open-drain outputs to implement active-low wired-OR or active-high wired-AND functions. The maximum sink current is 32 mA per output. This device is fully specified for partial-power-down applications using  $I_{off}$  circuitry. The  $I_{off}$  circuitry disables the outputs preventing damaging backflow current through the device when the device is powered down but voltage remains on the output (or outputs).

图 7 shows a block diagram of the device.

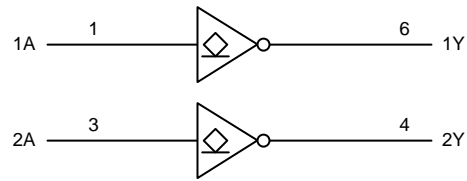


图 7. SN74LVC2G06-Q1 Block Diagram

Additional features:

- AEC-Q100 qualified for automotive applications
- Supports 1.65-V to 5.5-V  $V_{CC}$  operation
- Max  $t_{pd}$  of 3.4 ns at 3.3 V
- Low power consumption, 10- $\mu$ A maximum
- $\pm 24$  mA output drive at 3.3 V
- Inputs and open-drain outputs accept voltages up to 5.5 V
- ESD Protection exceeds 2-kV human-body model, 200-V machine model, and 1-kV charged-device model

### 2.2.7 SN74AHCT1G04-Q1

The SN74AHCT1G04-Q1 is an automotive qualified single inverter gate with TTL input threshold that comes in a 5-pin SC70 package.

图 8 shows a block diagram of the device.

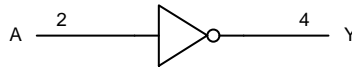


图 8. SN74AHCT1G04-Q1 Block Diagram

Additional features:

- AEC-Q100 qualified for automotive applications
- Operating range of 4.5 V to 5.5 V
- Maximum  $t_{pd}$  of 7.5 ns at 5 V
- Low power consumption—10  $\mu$ A maximum  $I_{CC}$
- $\pm 8$ -mA output current drive at 5 V
- TTL input thresholds
- Available in a SOT SC-70 package (DCK)

### 2.2.8 CSD17313Q2

The CSD17313Q2 is a 30-V, 24-m $\Omega$ , 2-mm  $\times$  2-mm SON package NexFET power MOSFET device designed to minimize losses in power conversion applications. The 2-mm  $\times$  2-mm SON offers excellent thermal performance for the size of the package.

图 9 shows a block diagram of the device.

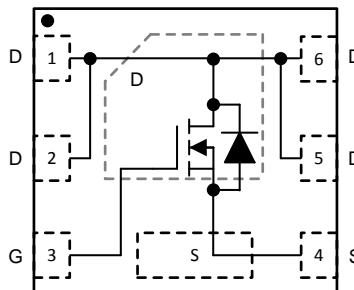


图 9. CSD17313Q2 Block Diagram

Additional features:

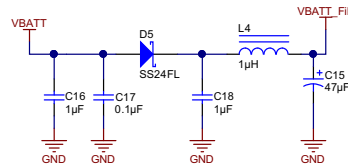
- 30 V VDS drain-to-source voltage
- Ultra-low Qg and Qgd
- Low-thermal resistance
- Pb-free, halogen-free, and RoHS compliant
- 1.3-V input threshold voltage
- 31-m $\Omega$  drain-to-source on resistance at  $V_{GS}$  of 3 V
- SON 2-mm  $\times$  2-mm plastic package

## 2.3 System Design Theory

BCMs, gateway modules, side mirror replacement modules, and head unit modules are all composed of several sub-circuits. This design covers the battery input, voltage regulation, and CAN portions of these applications. The following subsections cover the component selection and device configuration decisions for this design.

### 2.3.1 Supply Protection and Filtering

图 10 shows the portion of the schematic that has the reverse battery input protection diode, input capacitors, and pi filter components.



Copyright © 2017, Texas Instruments Incorporated

图 10. Supply Protection and Filtering Circuitry

Diode D5 is a 40-V Schottky diode for protection against reverse battery conditions. Due to the wide-input voltage tolerant inputs of the LM5022-Q1 and the TPS57140-Q1 in conjunction with the reverse blocking Schottky diode the design can handle from  $-40\text{ V}$  to  $40\text{ V}$  on the VBATT input supply.

Capacitors C16 and C17 are used for input transient filtering, and the pi filter (composed of C18, L4, and C15) can be used to implement a two-pole, low-pass filter for conducted emissions. Input capacitors C16 and C17, pi filter components C18, and C15 were left unpopulated, and a  $0\text{-}\Omega$  shunt was placed across the inductor for the evaluation of this design.

Lastly, the VBATT net is directly tied to pin 9 of the external D-subminiature (D-sub) connector J6 as shown in 节 2.3.6.

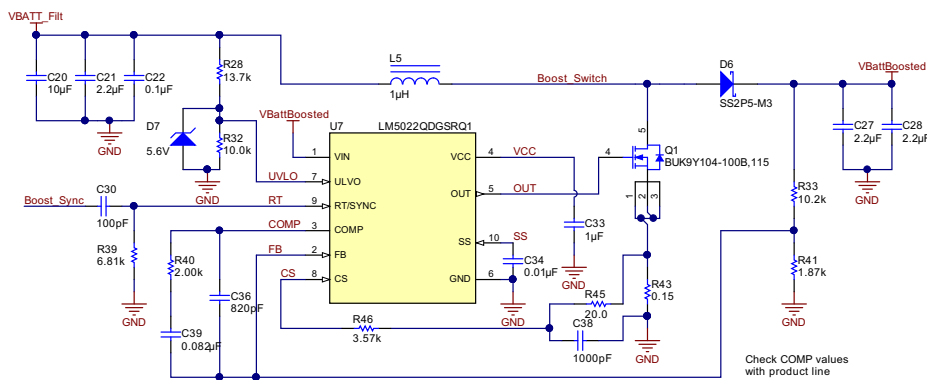
图 11 shows a snippet of the battery filtering and reverse voltage protection portion of the PCB.



图 11. Battery Filtering and Protection PCB Snippet

### 2.3.2 Wide-Input Voltage Boost Controller

图 12 shows the portion of the TIDA-01429 schematic with the LM5022-Q1 and all of its supporting circuitry.



Copyright © 2017, Texas Instruments Incorporated

图 12. LM5022-Q1 Non-Synchronous Boost Controller Circuitry

- UVLO pin: The UVLO pin of the LM5022-Q1 is able to handle voltages up to 7 V and has a typical shutdown threshold of 1.25 V. Due to the desired wide-input voltage operation of this design (3 V up to 40 V), a voltage divider with an additional Zener diode clamp was implemented. R28 and R32 create a 0.42:1 input voltage ratio, which means the UVLO pin will detect nominally 42% of the VBATT\_Filt voltage. Additionally, when the VBATT\_Filt voltage rises above 13 V, the Zener diode (D7) begins to clamp this voltage to protect the pin.
- VIN pin: The VIN pin supplies the internal logic of the device and is the source for the internal VCC



regulator, which supplies the integrated gate driver of the device. This pin has nominal UVLO threshold of 5 V. This threshold means that if the VBATT\_Filt voltage was fed directly to the VIN pin of the regulator, the device would undervoltage and shut off when VBATT\_Filt dropped below 5 V. To enable the device to operate all the way down to 3 V on VBATT\_Filt the VIN pin was supplied using the VBATT\_Boosted output voltage (nominally 8.1 V). The caveat to this approach is that the device will startup at a diode drop higher voltage (due to D6) later than if the VIN pin was directly supplied by VBATT\_Filt. The benefit to this solution that no extra components are needed and the regulator can continue to operate down to input voltages to 3 V instead of just 5 V.

- RT/SYNC pin: External resistor R39 sets the switching frequency of the LM5022-Q1. Using a 6.98-k $\Omega$  resistor set the nominal switching frequency to 2.07 MHz, which is above the AM band frequency range. Additionally, C30 can be used to capacitively couple an external clock to this pin for external clock synchronization. This pin can be used if a user desires synchronizing multiple switching supplies to the same frequency, therefore, avoiding beat frequencies due to slightly mismatched regulator switching frequencies. See 节 2.3.11 for more information on the clock synchronization signal. The design was evaluated with just the 6.98-k $\Omega$  resistor to GND setting the switching frequency of the LM5022-Q1.
- FB pin: Resistors R33 and R41 were used to set the output voltage of the LM5022-Q1. The internal error amplifier has a typical threshold voltage of 1.25 V. These resistors result in a nominal output voltage of 8.07 V.
- SS pin: An external capacitor on the SS pin can be used to set the period of time where the power converter gradually turns on. This pin can be used to reduce turn on power surges on the input rail. The pin has a nominal 10- $\mu$ A current source with a 550-mV input threshold. A capacitor value of 10 nF was used to create a 550- $\mu$ s soft-start time.
- CS pin: Sense resistor R43, low-pass filter R45 and C38, and series sense resistor R46 are used to set the overcurrent threshold and filtering. A sense resistor value of 150 m $\Omega$  was used to set a steady state inductor current limit of 3.3 A.
- Output diode: A low-forward voltage drop Schottky diode was used to limit the power losses in the output diode of the boost regulator. D6 is a 50-V, 2-A diode in a DO-220AA package.
- Input capacitors, output capacitors, compensation network, FET selection, and inductor selection were made using the *Detailed Design Procedure* section of the *LM5022-Q1 2.2MHz, 60 V Low-Side Controller For Boost and SEPIC*[1] datasheet. See 5 节 for a link to the datasheet.

The LM5022-Q1 is a non-synchronous boost controller with external FET and diode. This enables a scalable design at the tradeoff of a larger solution size. The total PCB solution size on the TIDA-01429 for the LM5022-Q1 and all of its supporting circuitry is 17.78 mm  $\times$  20.32 mm (700 mils  $\times$  800 mils).

图 13 shows a snippet of the boost controller portion of the PCB.

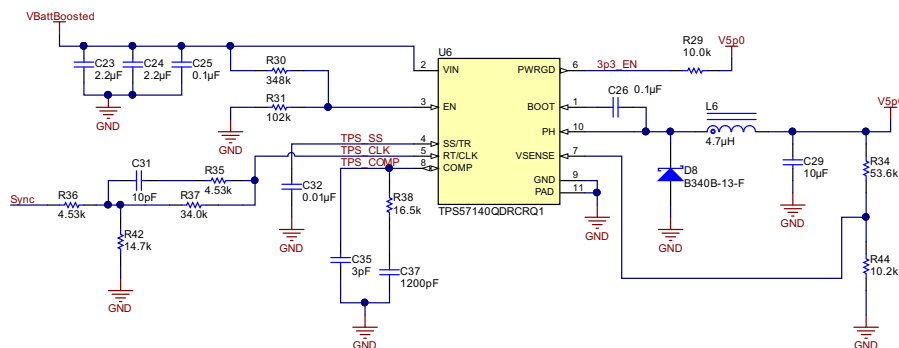


图 13. LM5022-Q1 Boost Controller Circuitry on PCB

Lastly, the LM5022-Q1 is able to handle input voltages as low as 3 V after startup. Due to the series Schottky diode drop on the input battery connection of up to 0.5 V for reverse battery protection, the module is able to handle input voltages as low as 3.5 V after startup and remain in regulation.

### 2.3.3 Wide Input Voltage Buck Converter

图 14 shows the portion of the TIDA-01429 schematic with the TPS57140-Q1 and all of its supporting circuitry.



Copyright © 2017, Texas Instruments Incorporated

图 14. TPS57140-Q1 Non-Synchronous Buck Converter Circuitry

- EN pin: For low-impedance input voltages the EN pin is only rated for a maximum input voltage of 5 V, but if the input voltage will not source more than 100  $\mu$ A, the 5-V maximum rating can be exceeded. Therefore, a high-impedance, resistive voltage divider is placed on the EN pin. R30 ensures that the

input current on the EN pin stays below 100  $\mu$ A for voltages up to 40 V. If a higher load dump voltage is desired, this resistor value can be increased allowing load dump input voltage up to 47 V because the LM5022-Q1 can handle up to 60 V.

- PWRGD pin: The PWRGD pin is used to enable the subsequent 3.3-V LDO that is supplied by the output voltage of the TPS57140-Q1. This pin is an open-drain output that is placed in a high-impedance state when the output voltage is between 94% and 107% of the set output voltage. Resistor R29 is used to pull the output high when the pin is in a high-impedance state.
- SS/TR pin: A capacitor placed between this pin and ground sets the slow start time of the regulator. Once the output capacitance, output voltage, and desired in-rush current is known, a soft-start time can be calculated. For this design a soft-start time of 3 ms was chosen, which results in a 9.38-nF capacitor. This value was rounded up to the standard value of 10 nF.
- VSENSE pin: The pin has a nominal voltage reference value of 0.8 V. External resistors R34 and R44 are used to create a voltage divider with the top node of the divider (output voltage) set to 5 V.
- Output capacitance, inductor, catch diode, and compensation network component selections were made using the formulas found in the *Detailed Design Procedure* section of the *TPS57140-Q1 1.5-A 42-V Step-Down DC-DC Converter With Eco-mode™ Control*[2] datasheet.

The TPS57140-Q1 is a non-synchronous buck converter with integrated, high-side FET, which enables a smaller PCB solution size. The total PCB solution size on the TIDA-01429 for the TPS57140-Q1 and all of its supporting circuitry is 15.75 mm  $\times$  17.0 mm (620 mils  $\times$  670 mils). 图 15 shows a snippet of the buck converter portion of the PCB.

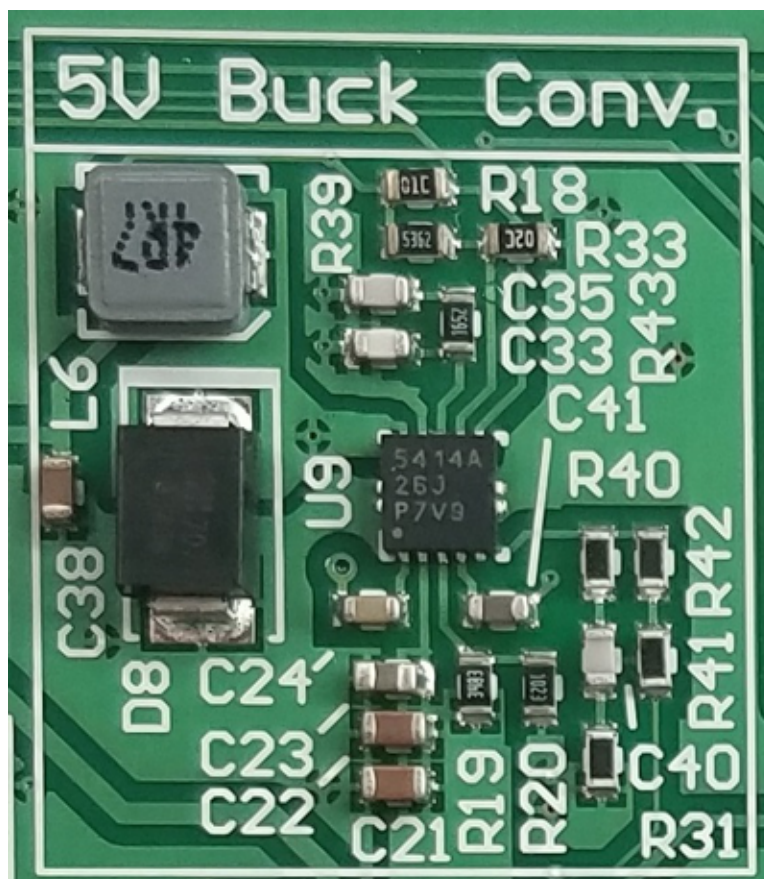
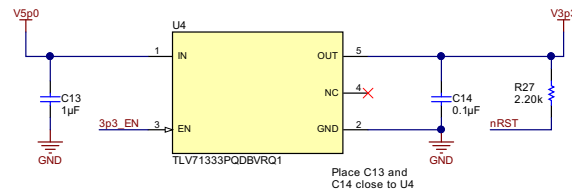


图 15. TPS57140-Q1 Buck Converter Circuitry on PCB

### 2.3.4 Low-Input, Voltage Fixed 3.3-V LDO

图 16 显示了原理图的一部分，其中包含 TL71333P-Q1 及其输入和输出电容器。



Copyright © 2017, Texas Instruments Incorporated

图 16. TLV71333P-Q1 3.3-V LDO 电路

虽然 TLV713P-Q1 系列的 LDO 可以在没有输入和输出电容器的情况下使用，但为了获得最佳的瞬态响应，在输入节点放置了一个 1-µF 电容器 (C13)，并在输出节点放置了一个 0.1-µF 电容器 (C14)，符合数据手册的建议。

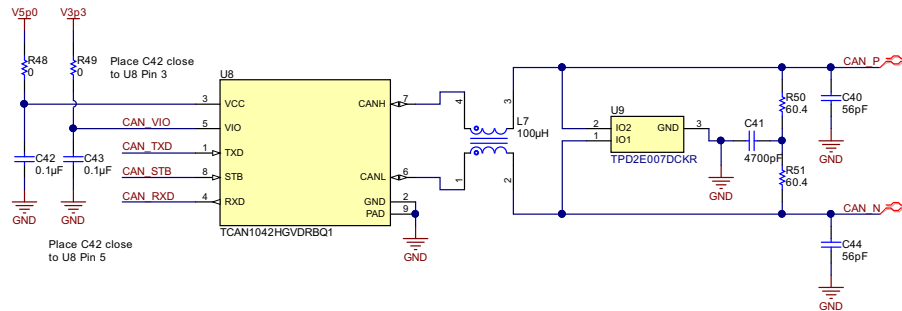
TLV71333-Q 是一款具有集成功率 FET 的线性 dropout 稳压器，能够实现非常小的解决方案尺寸。在 TIDA-01429 中的 TLV71333P-Q1 与输入和输出电容器一起的总 PCB 解决方案尺寸为 7.75 mm × 3.18 mm (305 密耳 × 125 密耳)。图 17 显示了 boost 控制器 PCB 部分的一个片段。



图 17. TLV71333P-Q1 LDO 电路在 PCB 上的照片

### 2.3.5 CAN Physical Layer

图 18 显示了原理图的一部分，展示了 CAN 物理层，其中包括 CAN 收发器、滤波公共模电感器 (CMC)、滤波电容器、静电放电 (ESD) 保护 IC，以及终端元件。



Copyright © 2017, Texas Instruments Incorporated

图 18. TCAN1042V-Q1 CAN 物理层电路

- 收发器 U8: TCAN1042 系列提供两种封装：8 引脚 SOIC 封装和小型 3-mm × 3-mm 无引脚 DFN 封装。对于此设计，使用了小型 DFN 封装。
- CMC L7: 在 CANH 和 CANL 总线中添加标准 CMC 封装，以便设计可以轻松使用各种 CMC。然而，设计是在没有 CMC 的情况下进行评估的，取而代之的是在电感器位置安装了两个 0-Ω 电阻。
- ESD IC U9: 一种通用封装双向 ESD 保护 IC 用于可选的 CANH 和 CANL 总线保护。然而，设计是在没有 U9 的情况下进行评估的。
- 终端元件 R50, R51, 和 C41: 这些元件用于通过分路终端技术终止 CAN 总线。该技术使用两个等于特征阻抗一半的电阻（通常为 120 Ω）和两个电容器连接到地，以滤除公共模噪声。如果标准终端是所需的，电容器 C41 可以保持开路。
- 滤波电容器 C40 和 C44: 这些电容器放置在 CANH 到 GND 和 CANL 到 GND 以帮助滤除高频瞬态和噪声。

显示了 PCB 的 CAN 物理层部分。

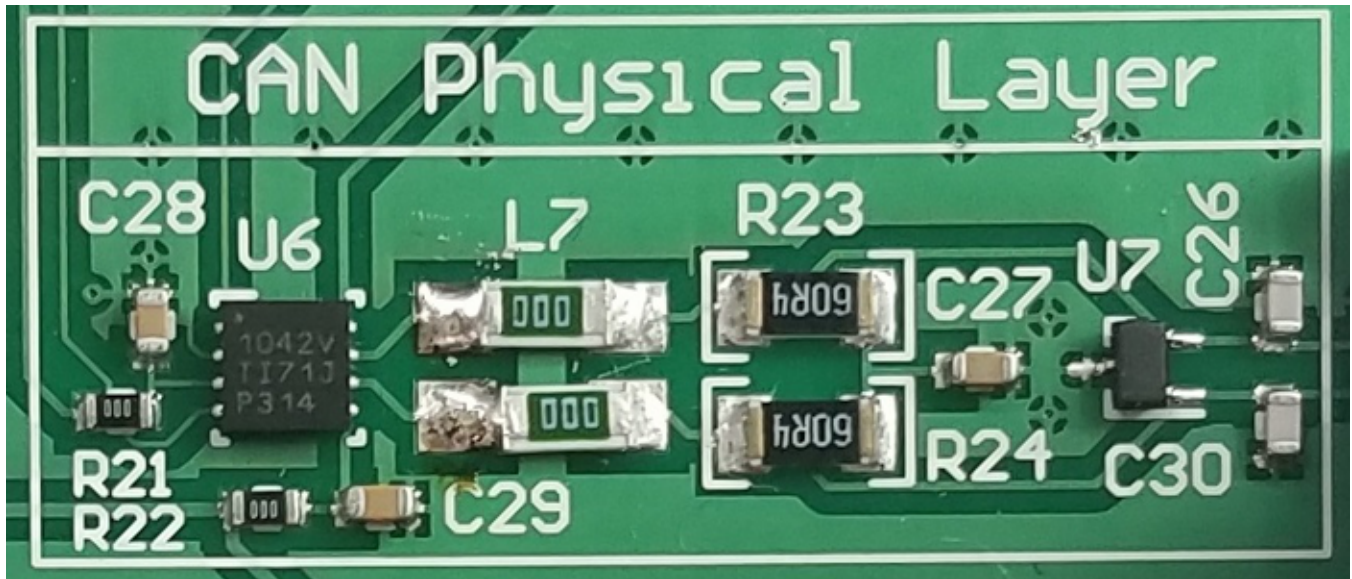
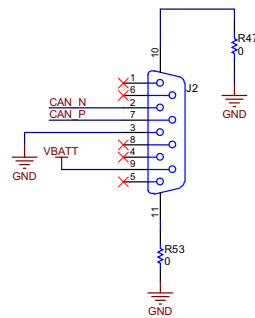


图 19. CAN Physical Layer Circuitry on PCB

### 2.3.6 External Power and Networking Connections

图 20 显示了外部连接器，包括 VBATT 输入、GND 连接以及 CANH 和 CANL 连接。用于 D-sub 9 连接器的引脚分配是 CAN 在自动化 (CiA) 文档 DIN 41652 中推荐的。图 20 显示了用于两个板载的母 D-sub 9 连接器以及用于创建线束的公连接器的引脚分配。



Copyright © 2017, Texas Instruments Incorporated

图 20. External Connector Pinout

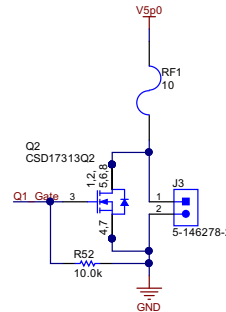
图 21 显示了 TIDA-01429 PCB 上的外部连接器。



图 21. External Connector for Power and CAN on PCB

### 2.3.7 Electronically-Controlled Dummy Load

图 22 显示了用于帮助进一步评估 5-V 降压调节器的假负载电阻器和外部电路。使用了 3-W、10-Ω 电阻器作为假负载，这导致在降压调节器的输出为 500 mA 时产生额外的负载电流。这用于评估 TPS57140-Q1 降压转换器的负载瞬态响应。



Copyright © 2017, Texas Instruments Incorporated

图 22. Dummy Load Circuitry

- J3: The two-pin, 100-mil header can be used for manually enabling and disabling the dummy load by placing a shunt across the pins.
- Q1: Additionally, the dummy load can be electronically controlled via GPIO24 (pin 64) of the TMS320F28030Q device. GPIO24 is tied to the gate connection of Q1 to enable and disable the load. Q1 is a 30-V, N-Channel, NexFET™ power MOSFET.
- R52: Resistor R52 is placed between the gate and source of Q1 ensures that the gate voltage is pulled low when the GPIO24 of the C2000 is in the high-impedance state.

GPIO24 和 Q1 用于评估负载-步响应，示波器截图是在 3.2 节中拍摄的。

图 23 显示了 PCB 上的假负载电阻器部分。

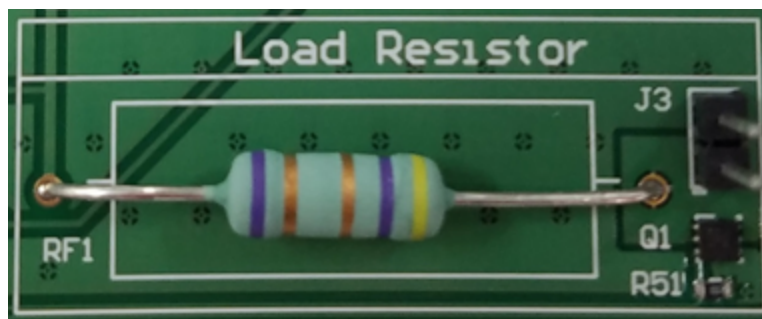


图 23. Dummy Load Resistor Circuitry on PCB



### 2.3.8 Status LEDs

Four status LEDs have been added to the design for ease of evaluation and monitoring during electro-magnetic compliance (EMC) testing. 图 24 shows the status LED portion of the schematic.

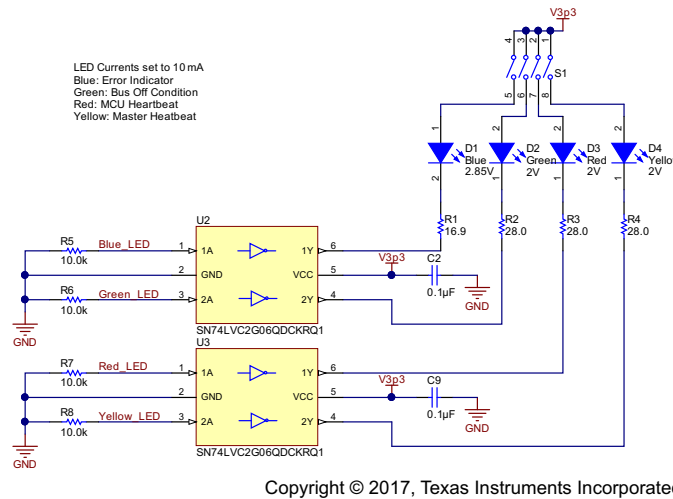


图 24. Status LED Circuitry

To ensure there would be proper drive current for the status LEDs two SN74LVC2G06-Q1 automotive dual-inverter and driver ICs were used for driving the four status LEDs. Additionally, the 3.3-V supply to each LED has been equipped with a single-pole switch that can be opened for disabling the LED, which is useful when taking current consumption measurements on the TIDA-01429 design.

All series resistors for the LEDs have been sized for a nominal 10 mA of LED current. 表 2 shows what status each LED was programmed to indicate.

表 2. Status LED Descriptions

LED COLOR	DESCRIPTION	BEHAVIOR
Blue	Any error status flag set in the CAN controller	Blinks at 1 Hz when any CAN error status flag is set
Green	Bus Off error condition in the CAN controller	Blinks at 1 Hz when the <i>Bus Off</i> flag is set
Red	MCU status LED heartbeat	Blinks at 1 Hz to indicate module is functioning properly
Yellow	Master status LED heartbeat	Blinks at 1 Hz to indicate module is configured as the master module and initiates communication

图 25 显示了 PCB 上的状态 LED 部分。每个开关的闭合位置在右侧，由 *On* 指示，每个开关的打开位置在左侧，由 *Off* 指示。

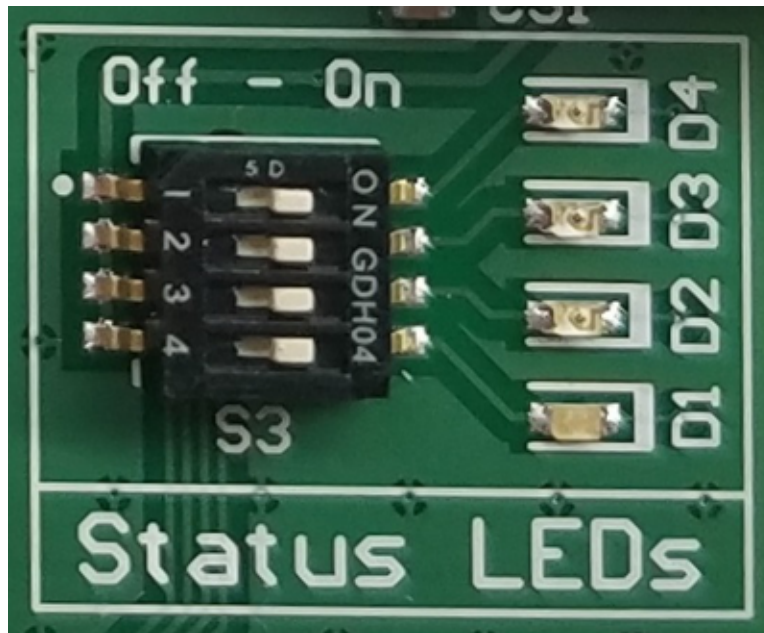
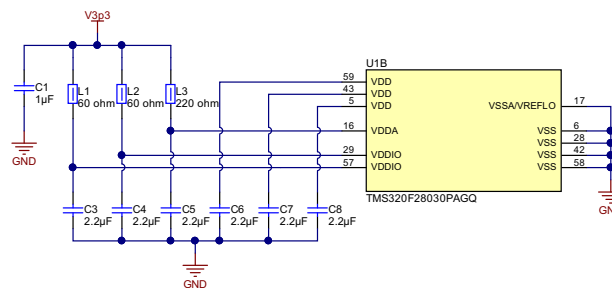


图 25. Status LED Circuitry on PCB

### 2.3.9 Piccolo™ Input Power Filtering

图 26 显示了 TMS320F28030PAGQ 器件的电源连接电路。



Place capacitors as close to VDD pins as possible

Copyright © 2017, Texas Instruments Incorporated

图 26. Input Power Filtering for the Piccolo™ MCU

- Supply decoupling capacitors: It is recommended to place a dedicated 2.2-µF capacitor on each VDDIO, VDDA, and VDD input as close to the device as possible.
- Ferrite beads: Additionally, it is recommended to place a series ferrite on both VDDIO supply input pins and the VDDA supply input pin for additional filtering.

### 2.3.10 Piccolo™ Mode Selection and Programming Interface

图 27 shows the optional external crystal, the mode selection input circuitry, reset control, and the JTAG programming interface portion of the schematic.

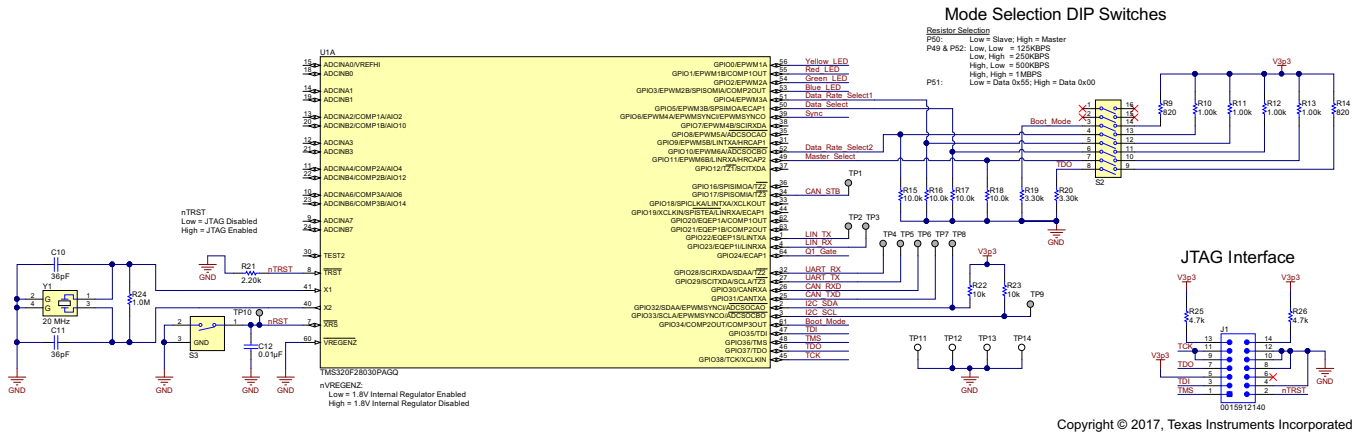


图 27. Mode Selection and Programming Interface Circuitry

- Optional external crystal: The TMS320F28030 has an internal crystal and the option to run off an external crystal. An optional 20-MHz crystal was populated, but the internal crystal was used for evaluation.
- Mode selection circuitry: Five of the general purpose input outputs (GPIOs) were used for mode selection and boot mode control:
  - GPIO11: If this pin is pulled high on startup, the module will be configured as the master node; if the pin is pulled low on startup, the module will be configured as the slave node.
  - GPIO5: The state of this pin on startup dictates what the data field of the CAN messages will be. If the pin is low, the data field will be 0x55555555, and if the pin is high, the data field will be 0x00000000.
  - GPIO10 and GPIO4: The state of these two pins on startup dictates what data rate the CAN interface is configured to:
    - Low, low: 125 KBPS
    - Low, high: 250 KBPS
    - High, low: 500 KBPS
    - High, high: 1000 KBPS
  - GPIO37 and GPIO34: The state of these two pins on startup tells the bootloader software what boot mode to use on power up:
    - Low, low: Parallel IO mode
    - Low, high: SCI mode
    - High, low: Wait mode
    - High, high: GetMode

The default behavior of GetMode is to boot to flash, and therefore, once the modules were programmed (into flash) after assembly, this is the mode that the modules were configured to for evaluation. For more information on boot modes please see *TMS320F2803x Piccolo Microcontrollers*[5].

- $\overline{XRS}$  reset input pin: Two connections were made to  $\overline{XRS}$  input pin. The first is a manual push button for restarting the MCU, and the second is the open-drain,  $\overline{RESET}$  output of the LM53601-Q1 device as shown in 图 12. The LM53601-Q1 holds this output low until the 3.3-V supply is in regulation. This ensures that the MCU only begins the boot process once a stable supply has been generated.
- JTAG programming interface: The device was programmed using a 7 × 2, 100-mil, JTAG header using the XDS100V2 JTAG emulator. For more information on JTAG programming please see *TMS320F2803x Piccolo Microcontrollers*[5].

图 28 显示了可选的外部晶体、模式选择电路、手动复位按钮、电源滤波元件，以及 JTAG 编程头 J1。

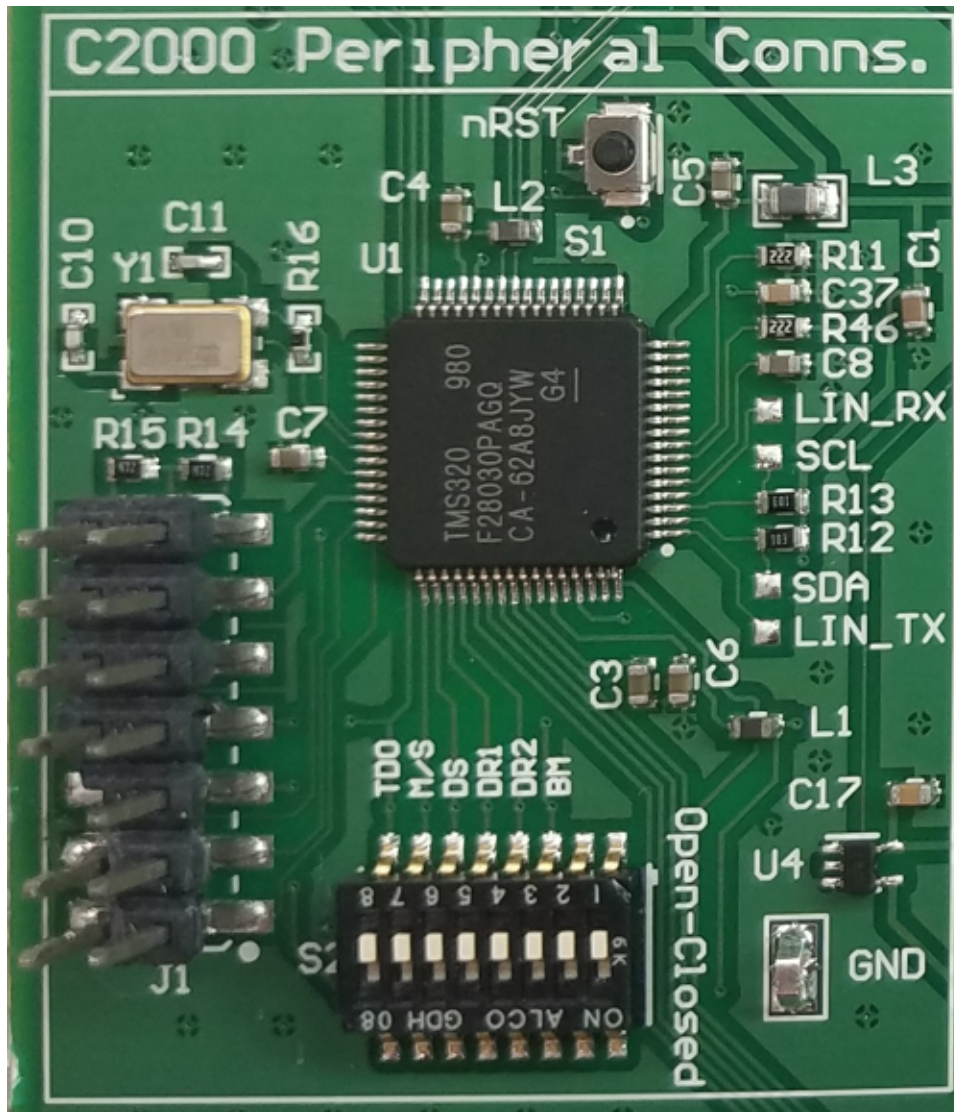
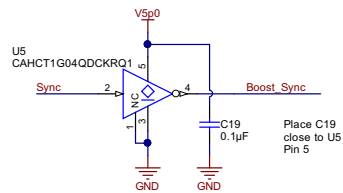


图 28. C2000™ Peripheral Circuitry on the PCB

### 2.3.11 External Clock Level Shifting

Because the Piccolo C2000 MCU's IO pins are 3.3 V and the LM5022-Q1 RT/SYNC input threshold can be as high as 3.8 V, an single-inverter gate was placed in the design for the option to drive the LM5022-Q1 and TPS57140-Q1 with an external clock signal. 图 29 显示了电平的移位部分 of the schematic.



Copyright © 2017, Texas Instruments Incorporated

**图 29. Clock Level Shifting Circuitry**

This SN74AHCT1G04-Q1 was selected because the device has a small SC70 footprint, low-propagation delay, a TTL input threshold, and is automotive qualified. The TTL input threshold allows the device to be supplied by 5 V and have the input signal driven by a 3.3-V MCU IO pin.

### 3 Hardware, Software, Testing Requirements, and Test Results

#### 3.1 Required Hardware and Software

This section provides an overview of the TIDA-01429 board, the external connections on the board, the mode selection switches, and how the design was evaluated.

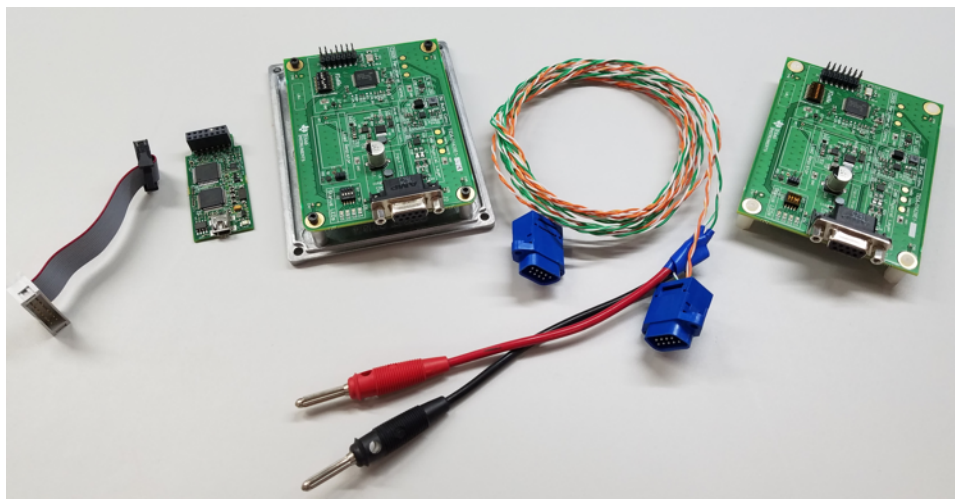
##### 3.1.1 Hardware

The TIDA-01429 reference design was created to evaluate a 3-stage power tree with a CAN interface. The first stage of the power tree is a wide-input voltage boost controller to an intermediate voltage of 8.1 V when boosting, and the second stage is a wide-input voltage buck converter to 5 V. The third stage is a low-input voltage LDO used to create a 3.3-V supply rail for the C2000 MCU. To evaluate the CAN interface, a pair of modules connected to each other using a 4-wire harness is required.

To set-up and evaluate this design the following three items were used:

1. Two TIDA-0429 PCBs
2. A wire harness with four conductors: One unshielded twisted pair (UTP) cable for CANH and CANL, and another UTP cable for VBATT and GND power connections
3. An XDS100V2 JTAG emulator for programming the TMS320F28030PAGQ Piccolo MCU

All of these items are shown in [图 30](#).


**图 30. Getting Started Hardware**

### 3.1.1.1 TIDA-01429 PCB Boards

The PCBs are 101.6 mm x 76.2 mm (4" x 3") and have 1-oz copper foil on both sides. There are two external connectors used to interface with the board:

1. Header J1: This is a 14-pin (7 x 2) ,100-mil header used for programming the TMS320F28030PAGQ device using a JTAG interface using the XDS100v2 JTAG emulator
2. Connector J2: This is a female, 9-pin, D-subminiature (D-sub) connector (DE-9) that has four connections for power, ground, CANH, and CANL

### 3.1.1.2 Mode Selection

As discussed in 节 2.3.10, four GPIO pins are used to configure the module on power up. The state of GPIO5 on power up dictates the data field of the CAN messages, the state of GPIO11 dictates whether the node will be configured in master or slave mode, and GPIO11 and GPIO4 dictate which of the four data rates the CAN messages will be transmitted and received at. Note that both modules must be configured to the same data rate to properly communicate. 表 3 shows the 16 possible configurations that are dictated by the states of GPIO4, GPIO 5, GPIO10, and GPIO11 on power up.

表 3. Mode Selection

GPIO5	GPIO11	GPIO10	GPIO4	DATA FIELD	MASTER OR SLAVE	DATA RATE (KBPS)
Low	Low	Low	Low	0 x 5555 5555	Slave	125
Low	Low	Low	High	0 x 5555 5555	Slave	250
Low	Low	High	Low	0 x 5555 5555	Slave	500
Low	Low	High	High	0 x 5555 5555	Slave	1000
Low	High	Low	Low	0 x 5555 5555	Master	125
Low	High	Low	High	0 x 5555 5555	Master	250
Low	High	High	Low	0 x 5555 5555	Master	500
Low	High	High	High	0 x 5555 5555	Master	1000
High	Low	Low	Low	0 x 0000 0000	Slave	125
High	Low	Low	High	0 x 0000 0000	Slave	250
High	Low	High	Low	0 x 0000 0000	Slave	500
High	Low	High	High	0 x 0000 0000	Slave	1000
High	High	Low	Low	0 x 0000 0000	Master	125
High	High	Low	High	0 x 0000 0000	Master	250
High	High	High	Low	0 x 0000 0000	Master	500
High	High	High	High	0 x 0000 0000	Master	1000

All of the states for GPIO4, GPIO5, GPIO10, and GPIO11 are controlled by switch S2. If the switch is in the closed position, the input will be pulled high, and if the switch is in the open position, the input will be pulled low. The status of the GPIO pins are only checked one time after power up during initialization. To change the mode of a module, the switch state must be changed and the module must be power cycled.

### 3.1.1.3 Wire Harness

The wire harness for electrically connecting the two boards together was created using two 1.7-m long, 24-gauge UTP cables with two male 9-pin, D-sub connectors. The pinout used is the recommended pinout by CiA document DIN 41652. 表 4 shows the pinout for the four connections that were used on each D-sub connector.

表 4. Wire Harness Connections

D-SUB CONNECTOR PIN	CONNECTION DESCRIPTION
Pin 2	CANL: Low-level CAN bus IO line
Pin 3	Ground power connection
Pin 7	CANH: High-level CAN bus IO line
Pin 9	Battery input power connection

Additionally, two banana plug pigtail power connections were added to one side of the harness for connecting to a lead-acid battery or alternate power supply.

图 31 shows an image of assembled wire harness that was used for evaluation.

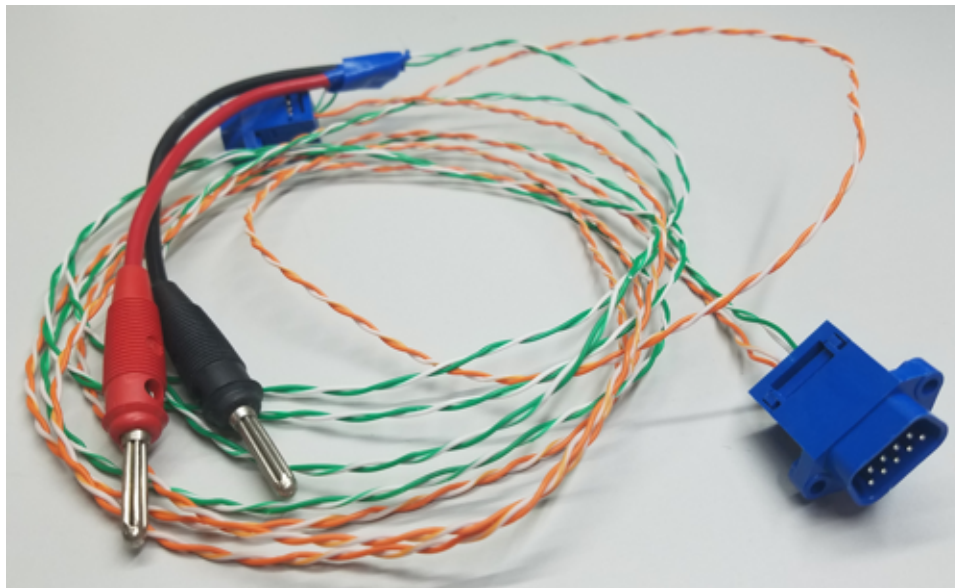


图 31. Assembled Wire Harness

### 3.1.1.4 Power Supply Connection

The modules are powered through the banana plug pigtails that were added to the wire harness as shown in 图 31. The VBATT net is red and GND net is black. These two connections are shared between both ends of the wire harness, therefore, the supply connection is only required to be made on the one end of the harness to power both modules. The recommended supply voltage range is from 3.5 V to 40 V.

### 3.1.1.5 XDS100V2 JTAG Emulator

The XDS100V2 JTAG emulator is an emulator made by Spectrum Digital Incorporated that can be used to program a variety of MCUs using JTAG. This emulator plugs into a computer using a USB and connects to the target using a standard, 14-pin, JTAG interface. 图 32 shows an image of the XDS100V2.





**图 32. XDS100V2 JTAG Emulator**

Once the modules are programmed in flash and the boot mode switches for GPIO34 and GPIO37 are both set to high, the modules can be power cycled and evaluated without reprogramming them.

### 3.1.2 Software

The software was written using Code Composer Studio™ v7.1.0 in C. 图 33 shows a program flowchart describing what was programmed into each module. As long as one module is configured as a master, and one module is configured as a slave, which is described in 节 2.3.10, and they are both configured to the same data rate. The two modules will automatically begin communicating and error checking once powered up and connected to each other.

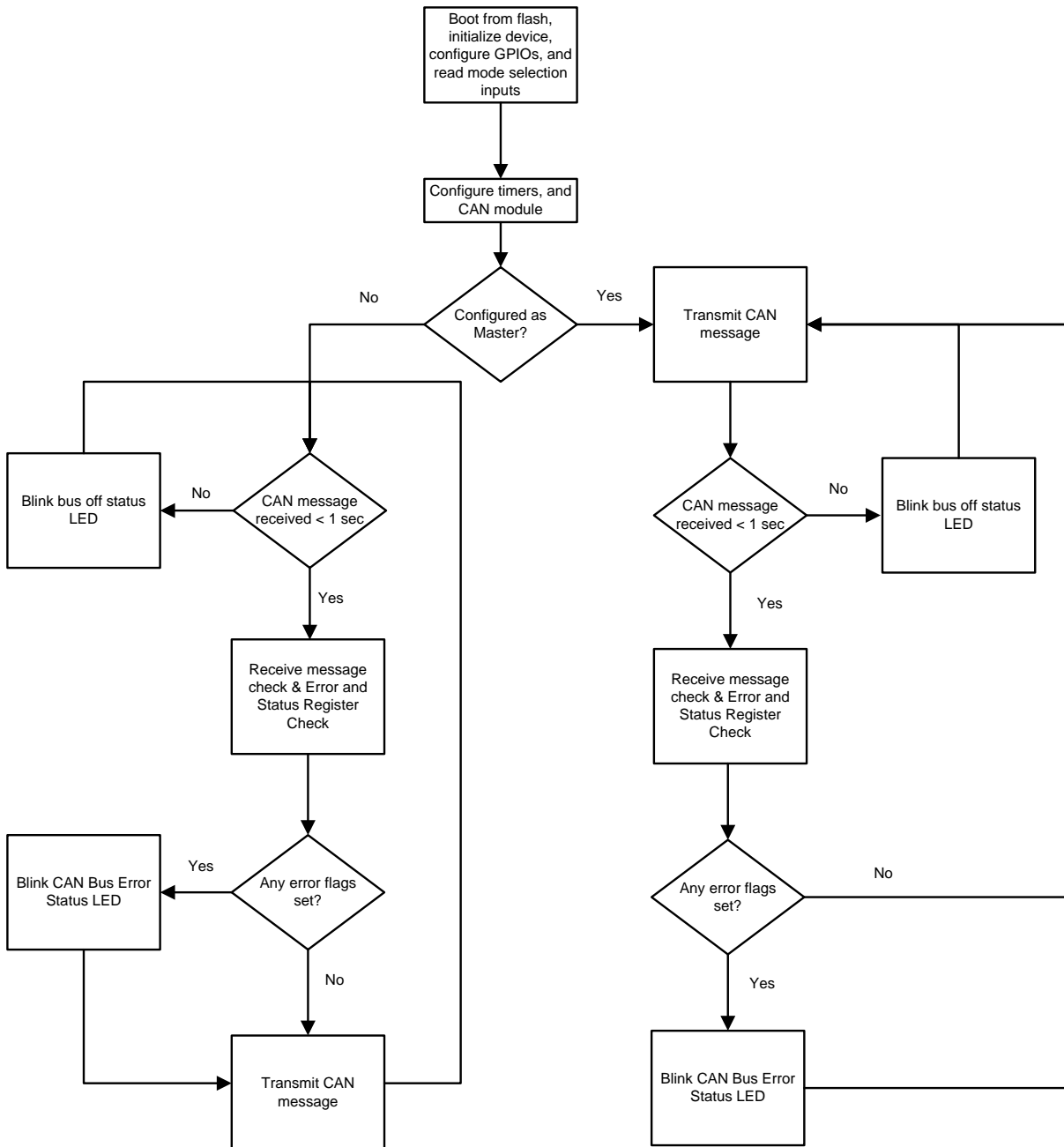


图 33. Program Flow Diagram

When the modules are powered up, first the bootloader checks the state GPIO34 and GPIO37. Once the modules have been initially programmed, the switches are set so both GPIO34 and GPIO37 are pulled high, which tells the bootloader to boot from flash.

In flash the module program first initializes the timers, interrupts, and GPIO pins. After initialization GPIO inputs GPIO4, GPIO5, GPIO10, and GPIO11 are read to determine how to configure the CAN module and whether the module will follow the slave program flow (left path) or the master program flow (right path) as shown in 图 33.

If the module is configured as the master node, the device will initiate traffic and indefinitely reattempt communication if a message is not received back. There is a 1-s timer that is started after each transmission of a CAN message. If this timer expires before a message is received, an error count is set, and the error status LED will blink four times at 1 Hz. If a message is received, the contents of the data field will be checked against a preprogrammed value. If the two do not match, or if any of the error flags are set in the error and status register, an error count is set, and the CAN error status LED will blink four times at 1 Hz. Additionally, if the I status flag is set, the bus off status LED will blink four times at 1 Hz. This send, receive, and error check process continues indefinitely.

If the module is configured as the slave node, the device will wait to receive a message before transmitting one. If the module does not receive a message within 1 s, an error count is set and the error status LED will blink four times at 1 Hz. Once a message is received, the contents of the data field will be checked against a preprogrammed value. If the two do not match, or if any of the error flags are set in the error and status register, an error count is set, and the CAN error status LED will blink four times at 1 Hz. Additionally, if the *Bus Off* status flag is set in the error and status register, the bus off status LED will blink four times at 1 Hz. After receiving and error checking the message, the module will transmit a CAN frame, and the process will start over. After transmitting, the 1-s timer will reset and begin counting down. If it expires before a message is received, the error status LED will blink four times at 1 Hz. This receive, error check, and transmit process continues indefinitely.

### 3.2 Testing and Results

The following items were evaluated on the TIDA-01429 design:

- Reverse blocking protection
- Boost controller input current versus input voltage
- Boost controller output voltage versus input voltage
- Boost controller UVLO pin's Zener diode clamping behavior
- Boost controller efficiency
- Buck converter input current versus input voltage
- Buck converter output voltage versus input voltage
- Buck converter efficiency
- Buck converter load step response
- LDO input current versus input voltage
- LDO output voltage versus input voltage
- CISPR 25 Radiated Emissions (RE) Testing
- CISPR 25 Conducted Emissions (CE) Testing - Voltage Method
- ISO 11452-4 Bulk Current Injection (BCI) Immunity Testing

### 3.2.1 Reverse Blocking Protection

For lower-current applications, a standard Schottky diode is the most cost-effective solution for reverse battery protection. A standard 40-V, 2-A Schottky diode in a SOD123 package was used. 图 34 shows the input leakage current versus the reverse polarity input voltage.

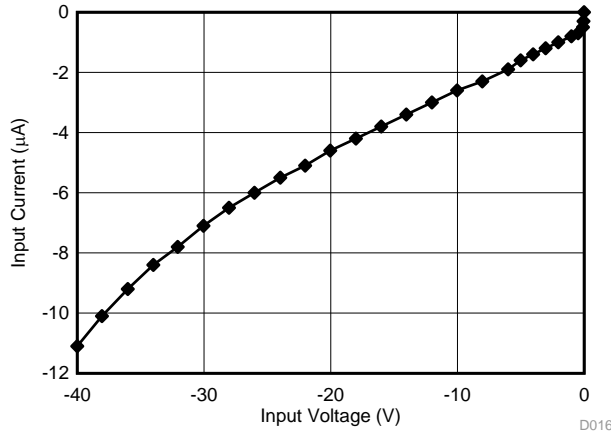


图 34. Reverse Blocking Performance

As shown in 图 34, the input leakage current with a -40-V input voltage applied was 11.1 µA at room temperature.

### 3.2.2 Boost Controller Input Current Versus Input Voltage

The input current versus input voltage data was taken with one module initialized and sending CAN messages at 500 KBPS. The input voltage measurements are taken from the input side of the regulator at C20. All of the status LEDs were all left open for these measurements. 图 35 shows the input current when the input voltage is ramped from 0 V to 40 V.

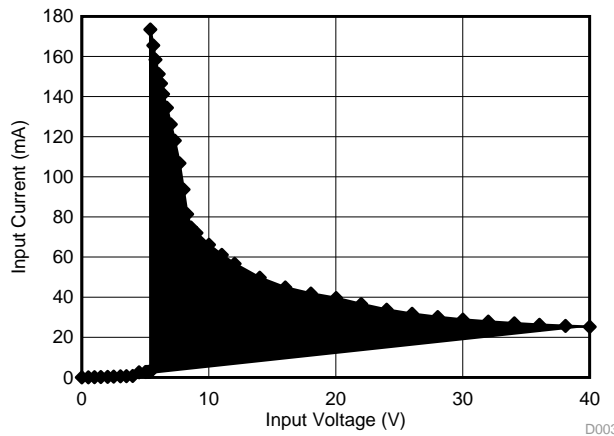


图 35. Boost Input Current Versus Rising Input Voltage

图 36 shows the input current when the input voltage is dropped from 40 V to 0 V.

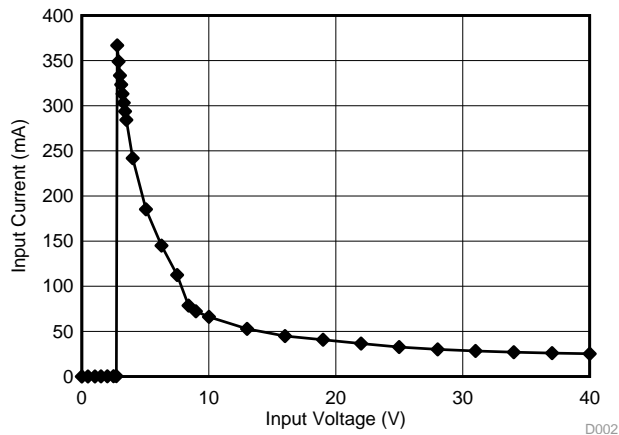


图 36. Boost Input Current Versus Falling Input Voltage

As shown, the boost controller does not begin turning on with a rising input voltage until approximately 6 V but remains on to just lower than 3 V with a falling input voltage. Additionally for lower input voltages, the regulator requires larger input currents to maintain the 8.1-V output.

### 3.2.3 Boost Controller Output Voltage Versus Input Voltage

The output voltage versus input voltage data was also taken with one module initialized and sending CAN messages at 500 KBPS. The input voltage measurements are taken from the input side of the regulator at C20. All of the status LEDs were left open for these measurements. 图 37 shows the output voltage for input voltages from 0 V to 40 V. As shown, when the input voltage rises higher than the boost controller's set output voltage of 8.1 V, the controller transitions to 0% duty cycle, and the output continues to ramp one diode drop below in the input voltage.

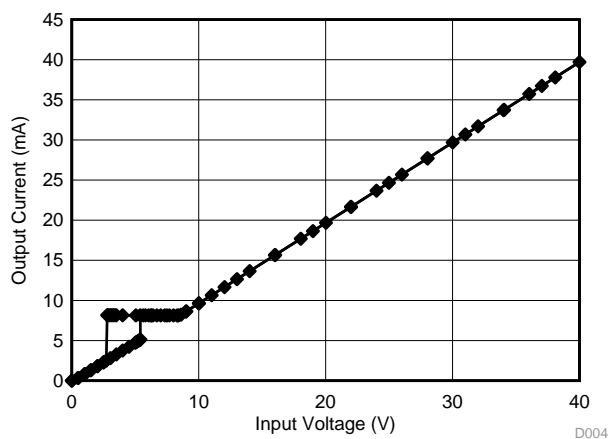


图 37. Boost Output Current Versus Input Voltage

To get a better look at the low-voltage behavior of the boost regulator, 图 38 shows the subset of data from 0 V to 10 V only. With a rising input voltage, the regulator turned out and began boosting the input voltage at approximately 5.5 V. Alternately, after initial power up with a falling edge, the regulator remained on and regulated down to approximately 2.8 V.

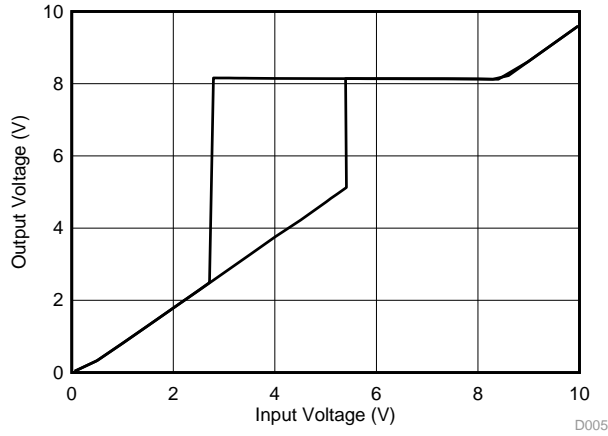


图 38. Boost Output Voltage Versus Low Input Voltages

### 3.2.4 Boost Controller UVLO Pin's Zener Diode Clamping Behavior

As stated in 节 2.3.2, the UVLO pin on the LM5022-Q1 required a Zener diode to clamp the input voltage and protect the input pin from voltages greater than 7 V. 图 39 shows the clamping behavior of the voltage divider and the Zener diode on the UVLO pin.

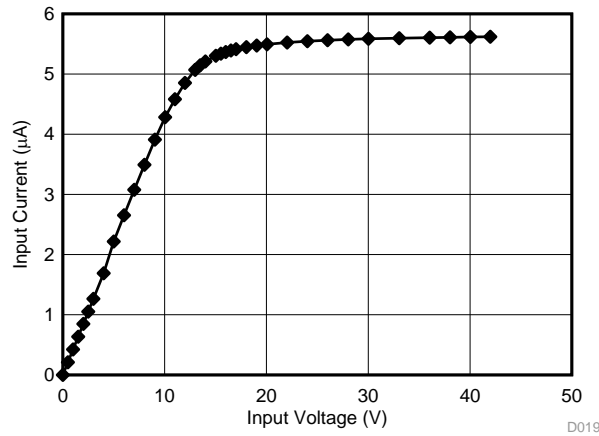


图 39. Voltage on UVLO Pin Versus Input Voltage

As shown in 图 39, the input voltage was clamped to a maximum of 5.6 V for input voltages up to 42 V.

### 3.2.5 Boost Controller Efficiency

The efficiency data for the boost controller was taken after completely disconnecting the boost portion of the design from the rest of the board (cutting traces). Once all of the external loads were disconnected from the output, and the input voltage could be applied directly to the VIN node of the boost controller, purely resistive loads were tied from the output of the regulator to ground.

Therefore, the input voltage measurements were taken directly at the input node of the regulator, and the output voltages were taken from C27 and C28 to GND. The extreme cold crank input voltage of 3 V was used for all efficiency measurements because during normal vehicle operating conditions, the boost controller will be at 0% duty cycle.

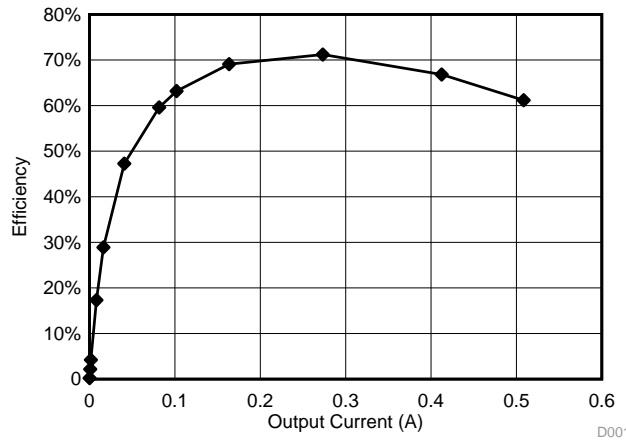


图 40. Boost Controller Efficiency Measurements

As shown the efficiency of the converter is between 60% and 70% from load currents of 100 mA to over 500 mA. For load currents greater than 500 mA, the regulator started current limiting and the output fell out of regulation. To handle larger loads at lower input voltages shunt resistor R43 can be adjusted to a lower resistance. Additionally, the switching frequency was monitored while performing the efficiency measurements. 图 41 shows the switching frequency of the buck converter with a 40-Ω load.

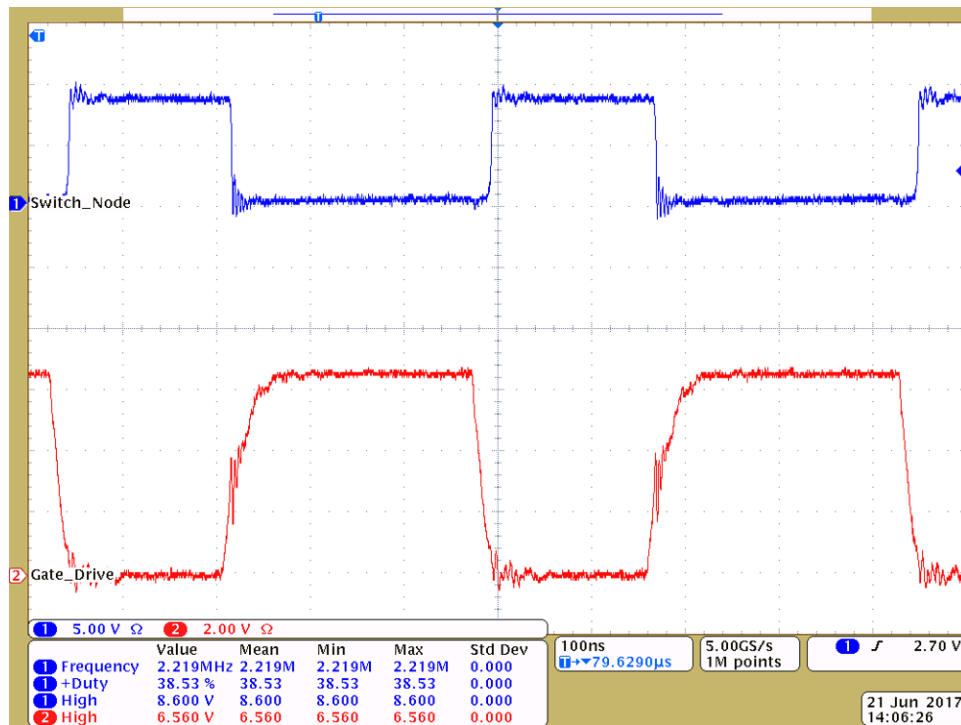


图 41. Boost Controller Switching Frequency

As shown in 图 41, the regulators switching frequency with a 125-mA load was 2.2 MHz.

### 3.2.6 Buck Converter Input Current Versus Input Voltage

To evaluate the buck converter's input current versus input voltage performance, the regulated LM5022-Q1 was disconnected, and a power supply was fed directly to the input node of the regulator at C23. The CAN transceiver and C2000 remained in normal mode in transmitting at 500 KBPS, and all the status LEDs were left open for all input current measurements.

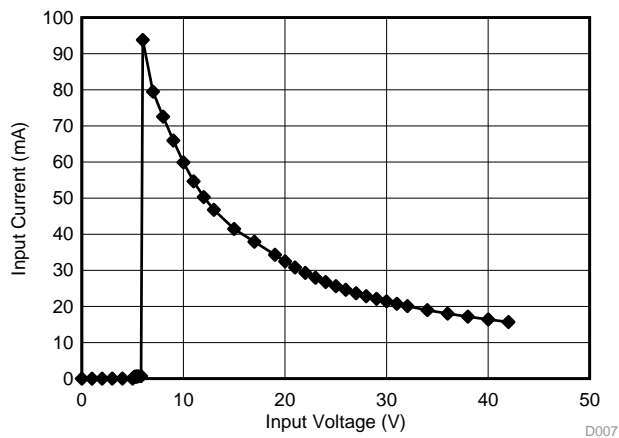


图 42. Buck Converter Input Current Versus Input Voltage

图 42 shows that the buck converter began to turn on and draw current at 5.1 V and was within regulation by 6 V.



### 3.2.7 Buck Converter Output Voltage Versus Input Voltage

To evaluate the buck converter's output voltage versus input voltage performance, the regulated LM5022-Q1 remained disconnected, and a power supply was fed directly to the input node of the regulator at C23. The CAN transceiver and C2000 remained in normal mode in transmitting at 500 KBPS, and all the status LEDs were left open for all output voltage measurements.

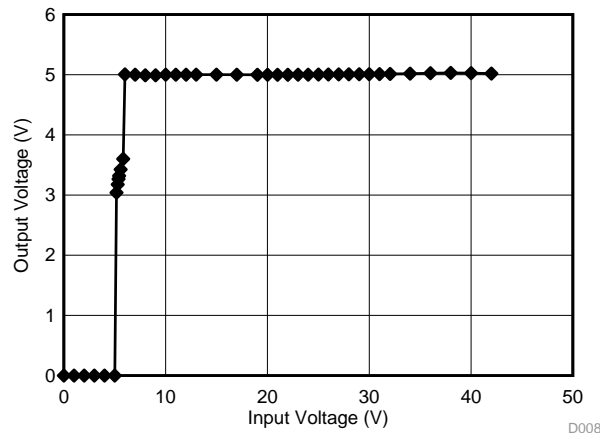


图 43. Buck Converter Output Voltage Versus Input Voltage

图 43 shows that the buck converter's output began to turn on at 5.1 V and was within regulation by 6 V. Additionally, the regulator remained in regulation all the way to 42 V.

### 3.2.8 Buck Converter Efficiency

The efficiency data for the buck converter was taken after disconnecting both the CAN transceiver and the 3.3-V LDO from the 5-V output and placing varying purely resistive loads on the output of the regulator. A constant input voltage of 12.5 V was applied to C23, the input node of the buck converter, for all efficiency measurements.

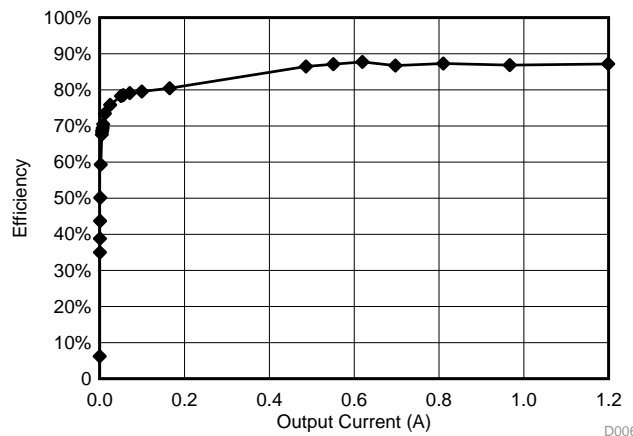


图 44. Buck Converter Efficiency Measurements

图 44 shows that for load currents between 8 mA and 100 mA, the efficiency was between 70% and 80%. Furthermore for output currents of 100 mA to 1.2 A, the efficiency remained between 80% and 90%.

### 3.2.9 Buck Converter Load Step Response

Lastly the buck converter was evaluated for output regulation accuracy when subjected to a step up in load current and a step down in load current. For this test, the dummy load resistor RF1 on the board was populated with a 10-Ω power resistor and transistor Q1 was used for quickly turning on and off this load. The 10-Ω load on the 5-V rail results in a 500-mA load step. The load step measurements were performed with the module initialized and sending CAN messages at 500 KBPS.

图 45 shows the converter's response to when the load is increased by 500 mA. As shown, the step increase in load current causes the output voltage of the regulator to droop 352 mV. 图 46 shows the converter's response time for the same load step. As shown, the step increase in load was fully recovered from in less than 50 μs.



图 45. Buck Converter Load Step Increase Response

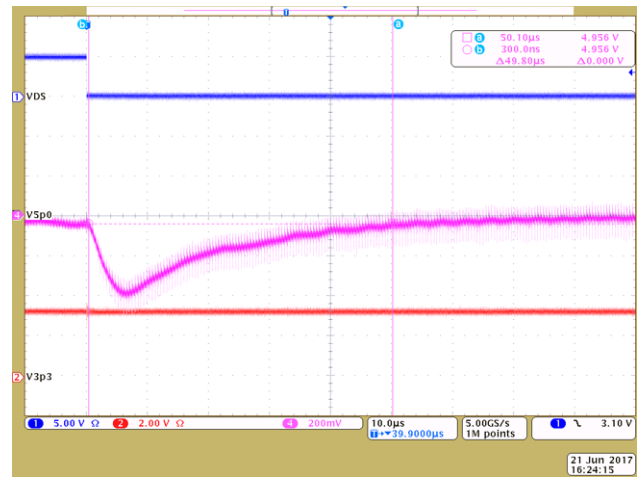


图 46. Buck Converter Load Step Increase Recovery Time

图 47 shows the converter's response to when the load is decreased by 500 mA. As shown, the step decrease in load current causes the output voltage of the regulator to increase by 344 mV. 图 48 shows the converter's response time for the same load step. As shown, the step decrease in load was fully recovered in 60  $\mu$ s.

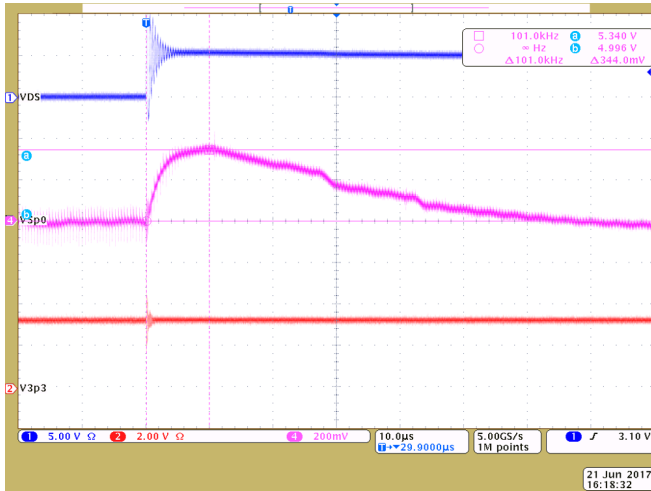


图 47. Buck Converter Load Step Decrease Response

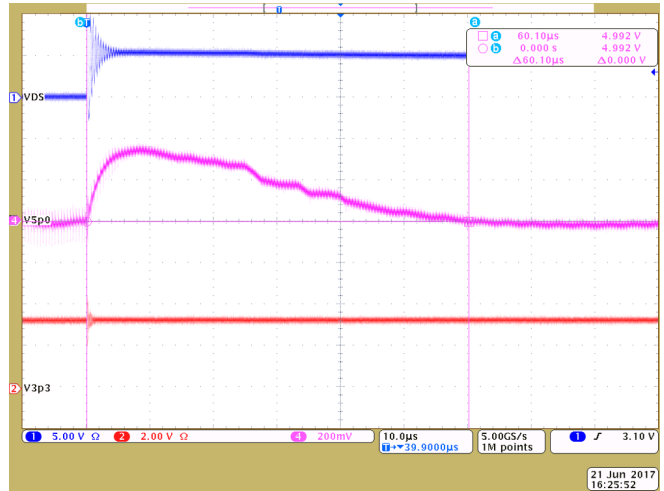


图 48. Buck Converter Load Step Decrease Recovery Time

### 3.2.10 LDO Input Current Versus Input Voltage

To evaluate the LDO's input current versus input voltage performance, the regulated 5-V rail was disconnected from the input and a power supply was fed directly to the input node of the regulator at C13. The CAN transceiver and C2000 remained in normal mode in transmitting at 500 KBPS, and all the status LEDs were left open for all input current measurements. The EN was tied to the input voltage of the device.

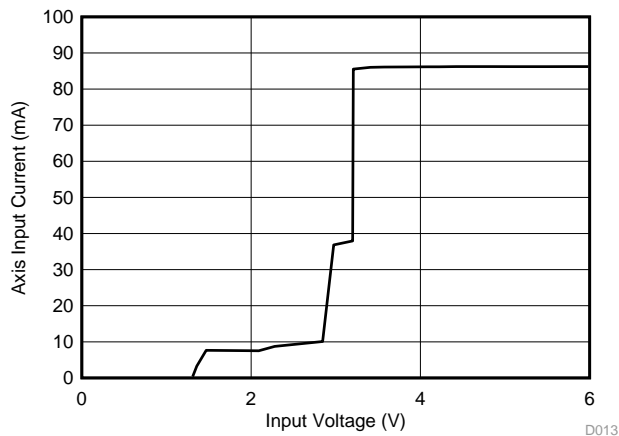


图 49. LDO Input Current Versus Input Voltage

图 49 shows that the LDO began to draw current at and turn on at 1.35 V and was in regulation at 3.57 V. In the actual application where the device would be held in low-power sleep mode by the TPS57140-Q1 until the 5-V rail was within regulation the device would remain disabled and draw less than 1  $\mu$ A of current until being enabled. Additionally, the device was tested for input quiescent current from 0 V to 6 V with the enable pin tied low, and the maximum input current was 0.6  $\mu$ A.

### 3.2.11 LDO Output Voltage Versus Input Voltage

To evaluate the LDO's output voltage versus input voltage performance, the regulated 5-V rail remained disconnected from the input and a power supply was fed directly to the input node of the regulator at C13. The CAN transceiver and C2000 remained in normal mode in transmitting at 500 KBPS, and all the status LEDs were left open for all input current measurements. The EN was tied to the input voltage of the device for this test.

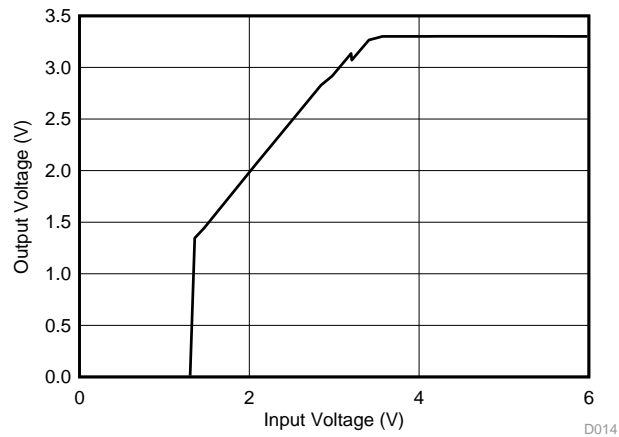


图 50. LDO Output Voltage Versus Input Voltage

图 50 shows that the LDO's output began to turn on at 1.35 V and was in regulation at 3.57 V. In the actual application where the device would be held in low-power sleep mode by the TPS57140-Q1 until the 5-V rail was within regulation the device's output would remain disabled, and the output voltage would not slowly ramp with input voltage. Additionally, the device was tested for output voltage when in low-power sleep mode when the input voltage was swept from 0 V to 6 V with the enable pin tied low. The output remained disabled and under 3 mV for the entire input range.

### 3.2.12 CISPR 25 Radiated Emissions Testing

Radiated emissions testing was performed for a pair of modules in an anechoic chamber per the ALSE test method in CISPR 25 Edition 4.0. In this test there are two modules placed 1.7-m apart from each other. The slave node, or equipment under test (EUT) as it is referred to in the standard, is placed on top of a low-relative permittivity support (raised off the ground plane by a material that resists electric fields). The master node, which is sometimes referred to as the monitoring node, is tied directly to the ground plane. This slave node setup is shown in 图 51, and the master node setup is shown 图 52.



**图 51. Slave Node Setup for Radiated Emissions**



**图 52. Master Node Setup for Radiated Emission**

The test consists of multiple frequency ranges for three different antennas with two of the antennas oriented in both the horizontal and vertical positions. The setup description for the five measurement runs are described below:

- Test run 1: 150 KHz to 30 MHz with a dipole antenna in vertical orientation
- Test run 2: 30 MHz to 200 MHz with a biconical antenna in horizontal orientation
- Test run 3: 30 MHz to 200 MHz with a biconical antenna in vertical orientation
- Test run 4: 200 MHz to 1,000 MHz with a logarithmic antenna in horizontal orientation
- Test run 5: 200 MHz to 1,000 MHz with a logarithmic antenna in vertical orientation

Each graph will show a series of three limit lines: one for each of the three detectors that are used on the spectrum analyzer to gather the data—one for the peak detector, one for the quasi-peak detector, and one for the average detector. A limited number of quasi-peak and average data points were taken to save test time. The test program selected these data points based on the frequencies where the peak detector was closest to the limit line.

The TIDA-01429 passed Class 5 CISPR 25 radiated emissions per the ALSE method without the input pi filter populated or a CMC populated on the CAN bus lines.

图 53 shows the dipole antenna that is 1-m in front of the test setup in the vertical position.

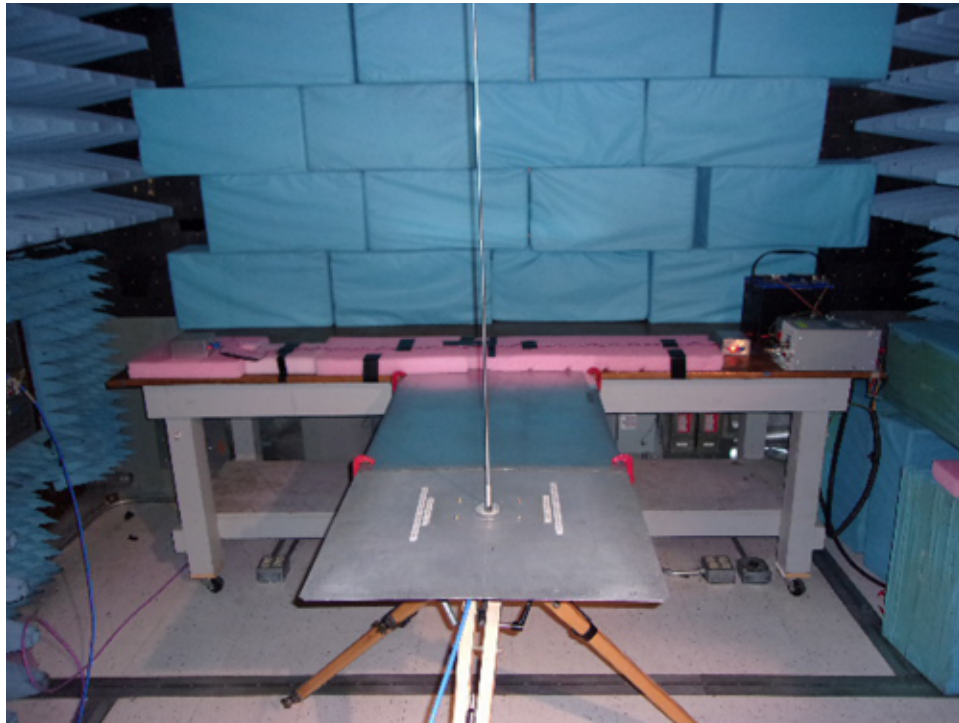


图 53. Radiated Emissions Dipole Antenna Setup

图 54 shows the radiated emissions results for test run one. As shown, the pair of modules pass the CISPR Class 5 broadcast radiated emissions limit lines.

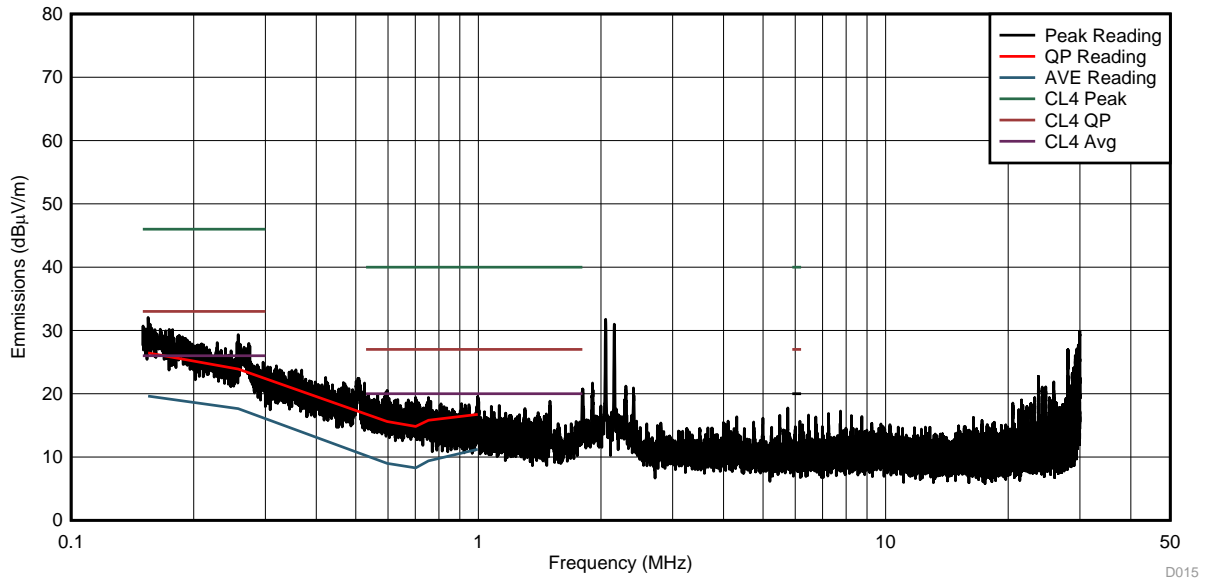


图 54. Radiated Emissions Dipole Antenna Results

Next to measure the emissions for the frequency range of 30 MHz to 200 MHz, a biconical antenna was used. The emissions measurements for this antenna must be performed in both the horizontal and vertical orientations. 图 55 shows the biconical antenna in the horizontal orientation that is 1-m in front of the test setup (test run two).

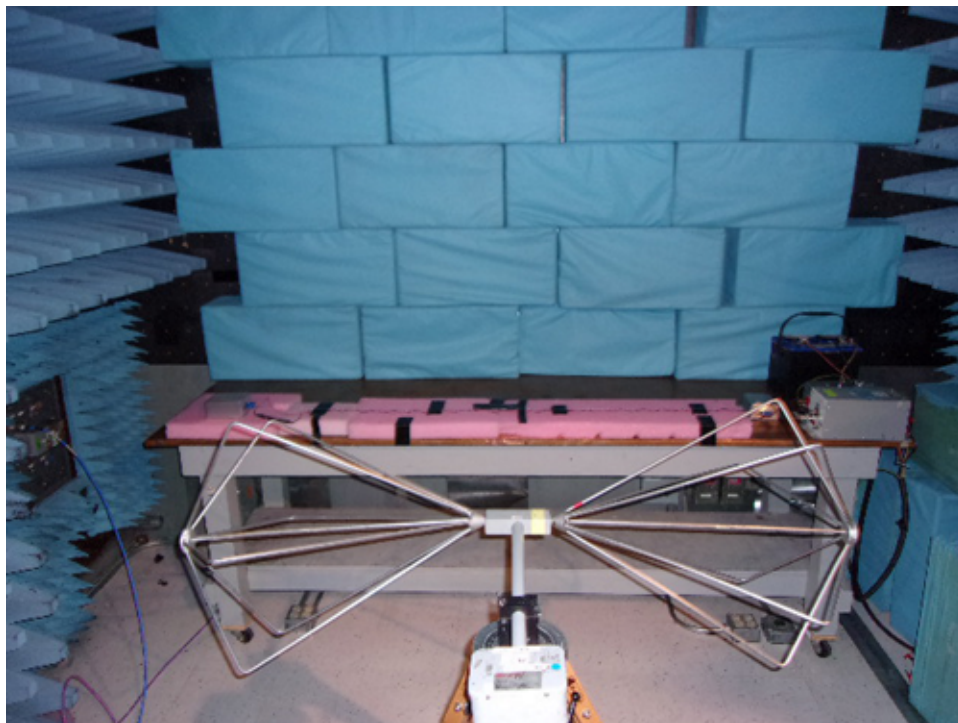


图 55. Radiated Emissions With Horizontal Biconical Antenna Setup

图 56 shows the radiated emissions results for this setup.

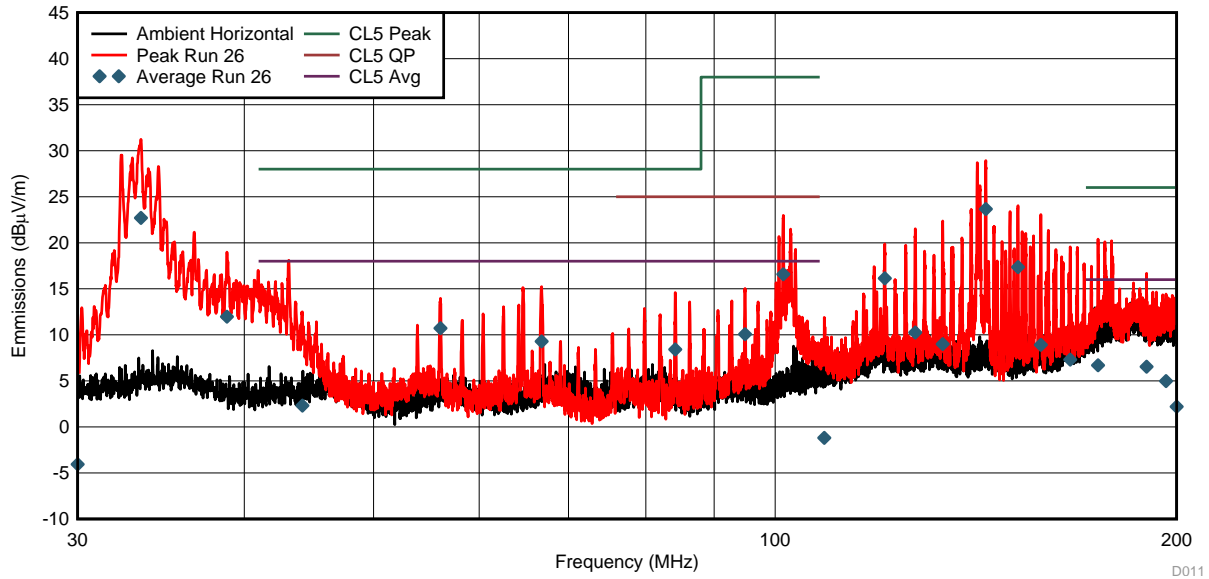


图 56. Horizontal Biconical Antenna Results

After running the emissions measurements in the horizontal orientation, the antenna was turned to the vertical orientation as shown in 图 57 (test run three).

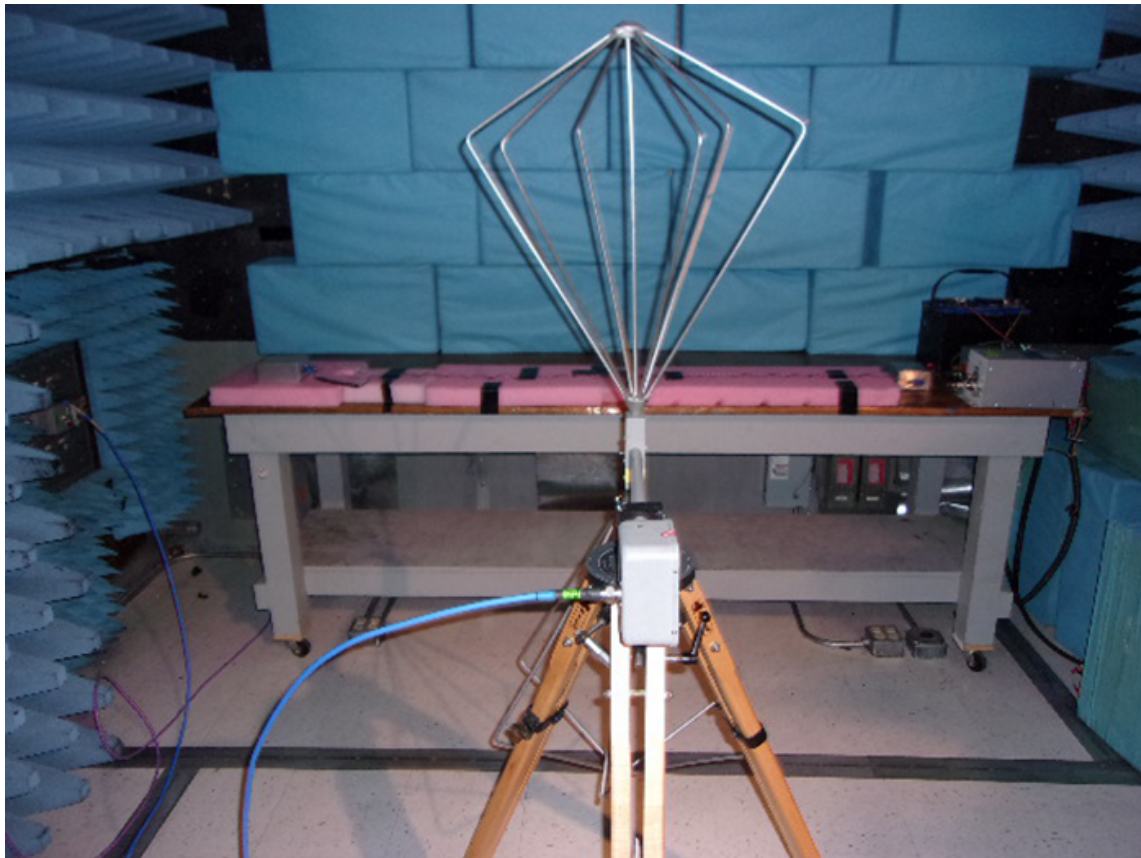


图 57. Radiated Emissions With Vertical Biconical Antenna Setup



图 58 shows the test results. As shown, the pair of modules pass the CISPR Class 5 broadcast radiated emissions limit lines with the biconical antenna in both horizontal and vertical orientations.

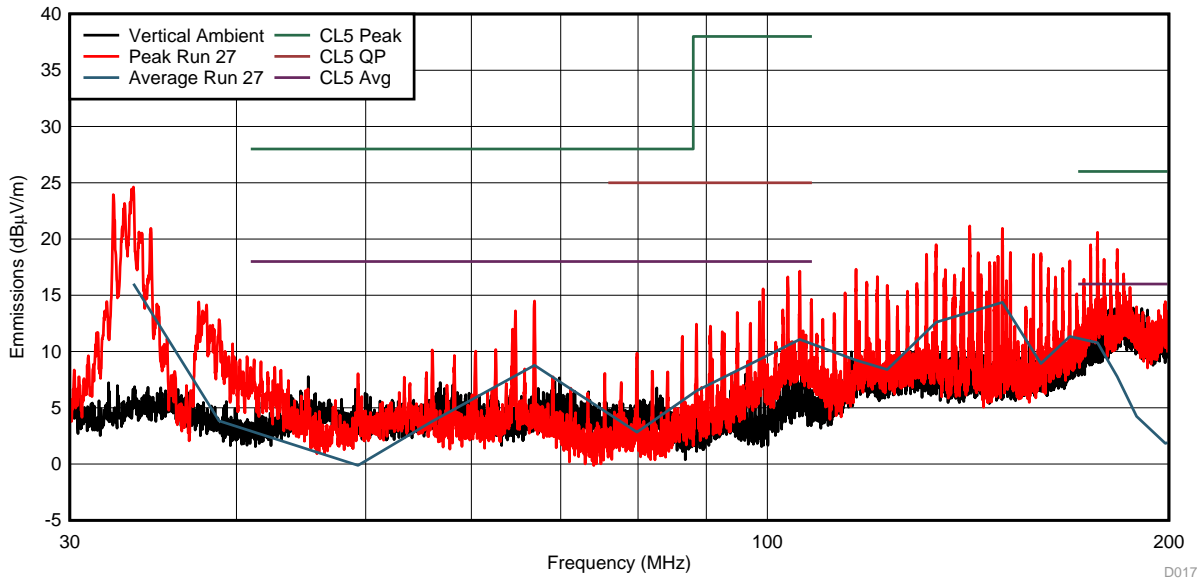


图 58. Vertical Biconical Antenna Results

Lastly to measure the emissions for the frequency range of 200 MHz to 1000 MHz, a logarithmic antenna was used. Again, the emissions measurements with this antenna must be performed in both the horizontal and vertical orientations. 图 59 shows the logarithmic antenna in the horizontal orientation that is 1-m in front of the test setup (test run four).

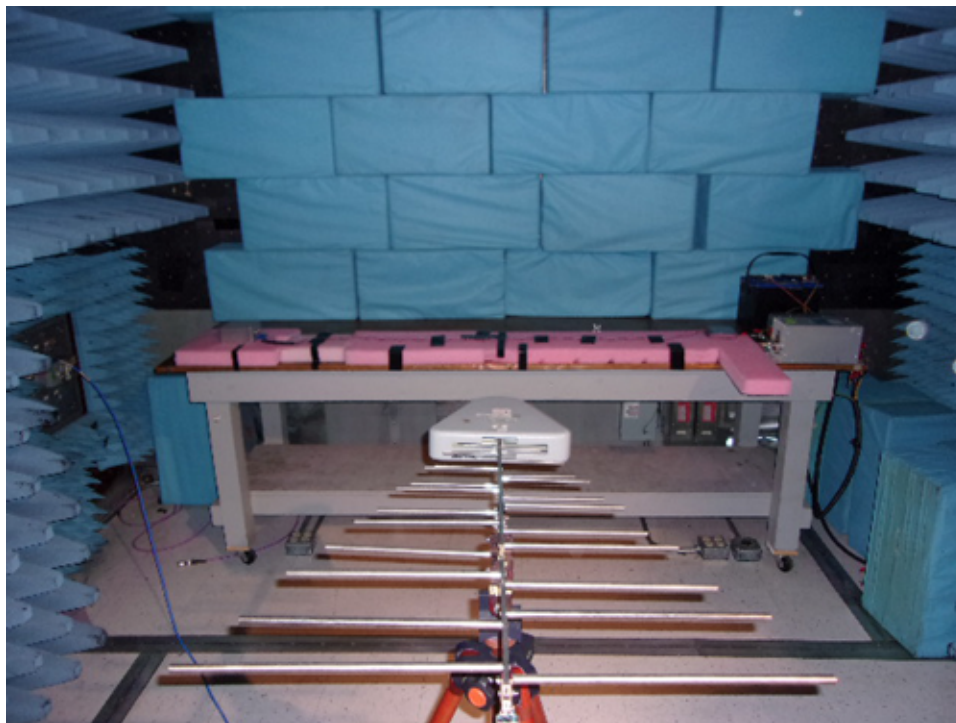


图 59. Radiated Emissions With Horizontal Logarithmic Antenna Setup

图 60 shows the radiated emissions results for this setup.

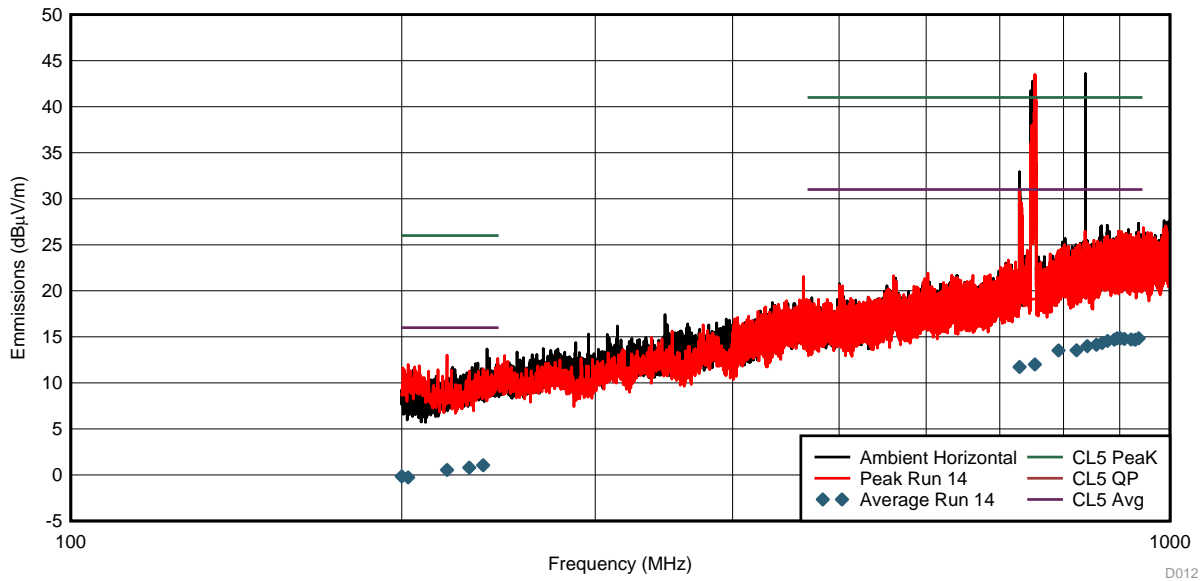


图 60. Horizontal Logarithmic Antenna Results

After running the emissions measurements in the horizontal orientation the antenna was turned to the vertical orientation as shown in 图 61 (test run five).

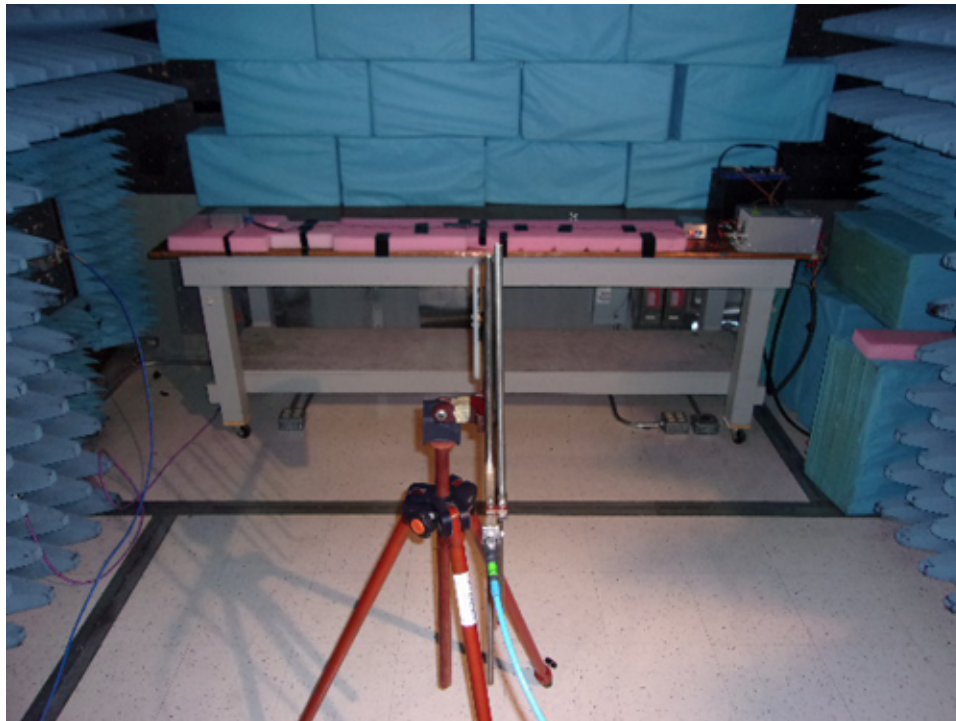


图 61. Radiated Emissions With Vertical Logarithmic Antenna Setup

图 62 shows the test results. As shown, the pair of modules pass the CISPR Class 5 broadcast radiated emissions limit lines with the logarithmic antenna in both horizontal and vertical orientations.

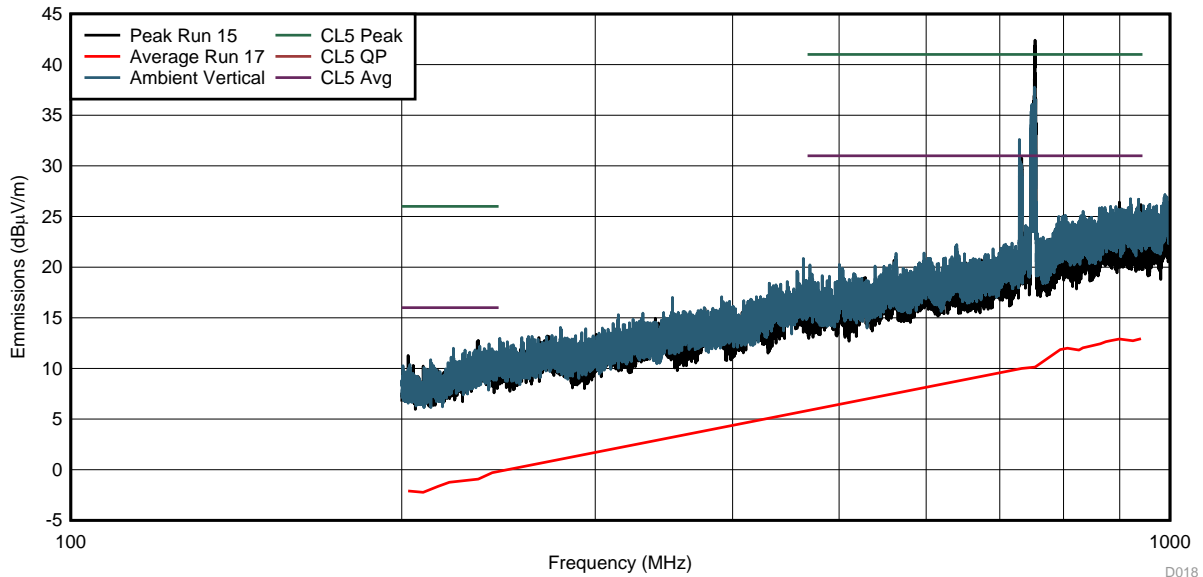


图 62. Vertical Logarithmic Antenna Results

### 3.2.13 CISPR 25 Conducted Emissions Testing - Voltage Method

Conducted emissions testing was also performed using a pair of modules in an anechoic chamber. The test methodology followed was the *Conducted emissions from components / modules - Voltage method* per the CISPR 25 Edition 4.0 standard. In this test supply lines between the connector of the module and the artificial network (sometimes referred to as a line impedance stabilization network or LISN) must be between 200 mm and 400 mm long. The same two modules with a 1.7-m harness between them were used for this testing. Both the slave node and the master node were placed on top of a low-relative permittivity support. This setup is shown in 图 63.

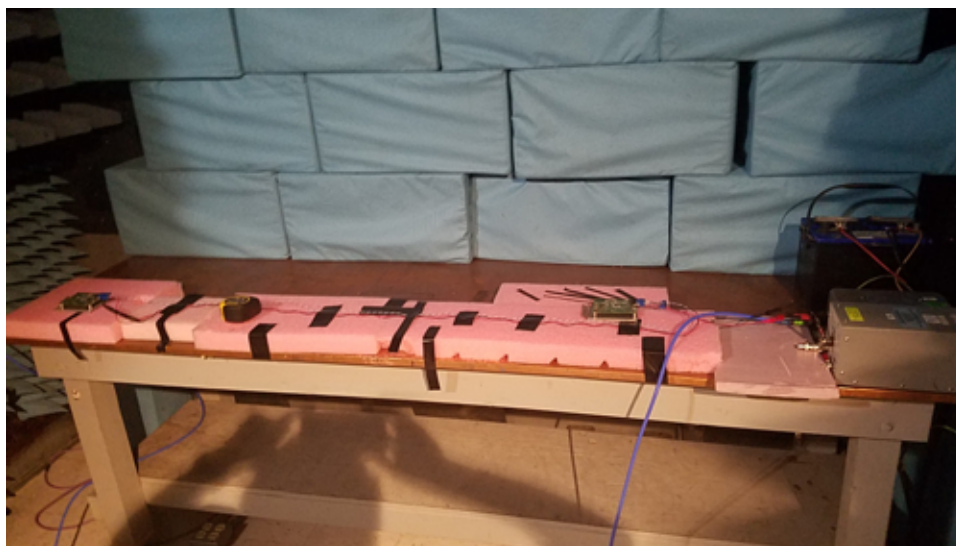


图 63. Conducted Emissions Setup

This test is performed two times: one on the positive power supply line and a second on the power return line (ground). The measurement is performed by connecting the spectrum analyzer to the measuring port of the artificial network for the battery supply line and the measuring port of the artificial network for the power return line, which are shown in 图 64.



图 64. Artificial Networks with Measuring Ports for Conducted Emissions

As shown in 图 65 and 图 66, the TIDA-01429 passes the CISPR 25 conducted emissions using the voltage method with the Class 4 limit lines.

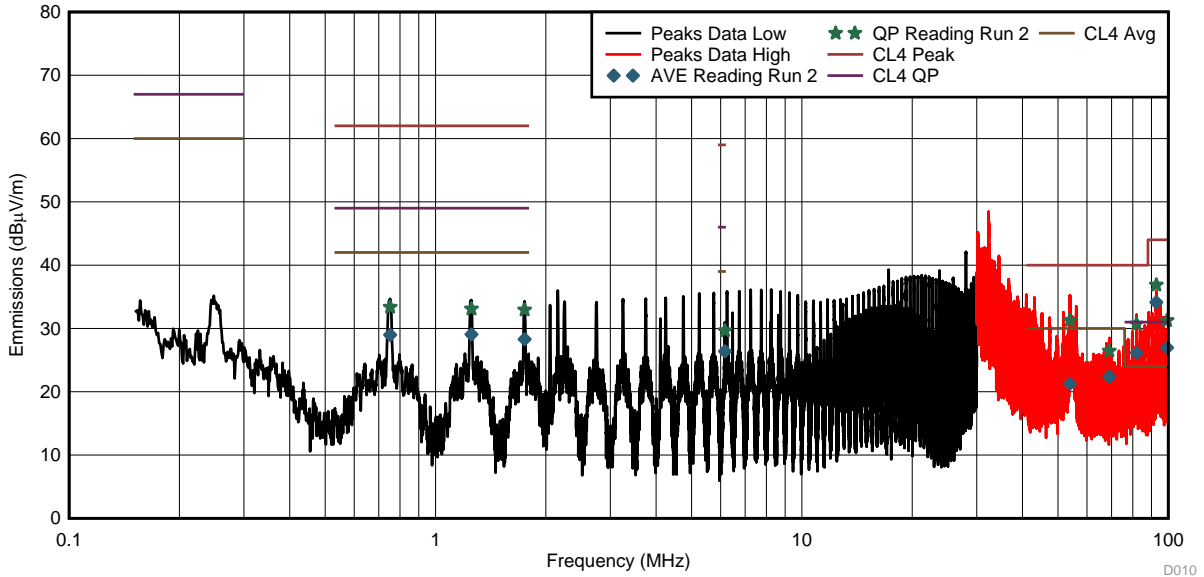


图 65. Conducted Emissions Results for Power Supply Line

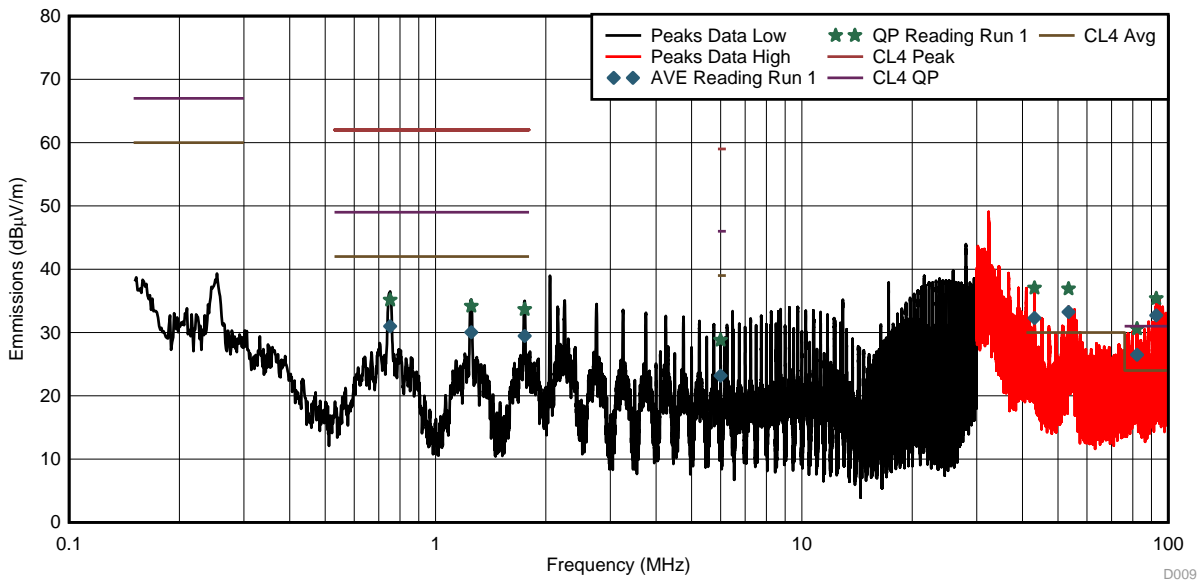
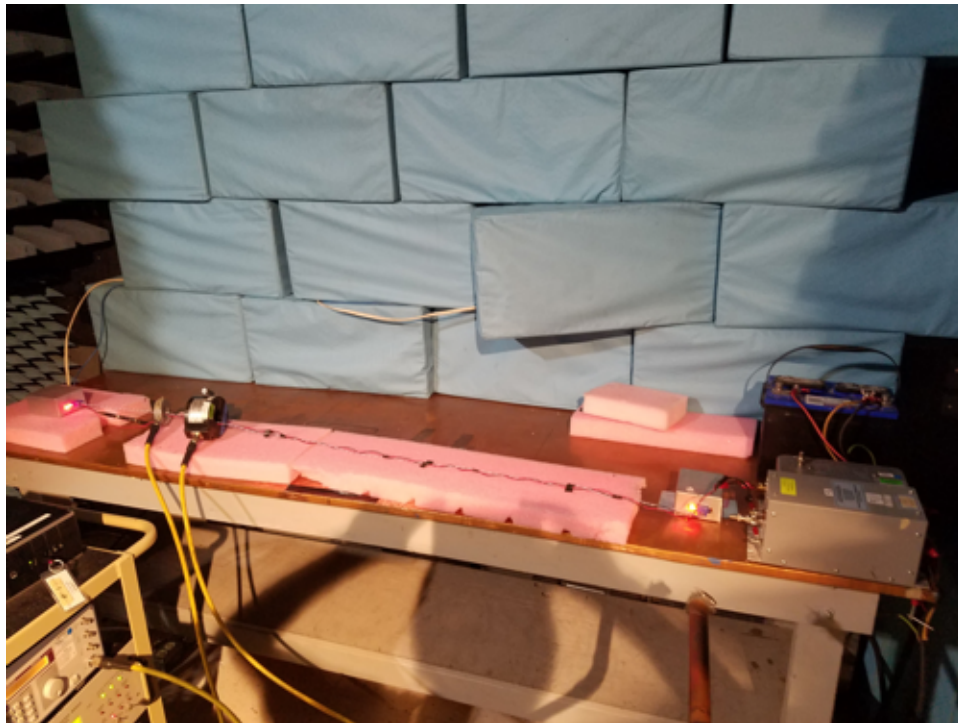


图 66. Conducted Emissions Results for Power Supply Return Line

### 3.2.14 ISO 11452-4 Bulk Current Injection Immunity Testing

BCI testing is an immunity test defined by ISO 11452-4 where noise is coupled onto a wire harness using a current injection probe. The amplitude at each frequency point is increased until there is a failure or the required level has been reached. To pass this immunity test the module has to continue to operate normally at all test frequencies for amplitudes greater than or equal to the limit line. This test was performed with all four conductors of the wire harness run through the current injection probe with the probe 450 mm from the slave node and 750 mm from the slave node as shown in [图 67](#).



**图 67. Bulk Current Injection Test Setup**

The health of the units were tracked by monitoring the status LEDs using a coaxial camera feed that was run out of the shielded room to a television.

图 68 shows the immunity performance when the current injection probe was placed 450 mm from the slave node, and 图 69 shows the immunity performance when the current injection probe was placed 750 mm from the slave node. As shown in both figures, neither test showed any deviations and passed up to the required power levels.

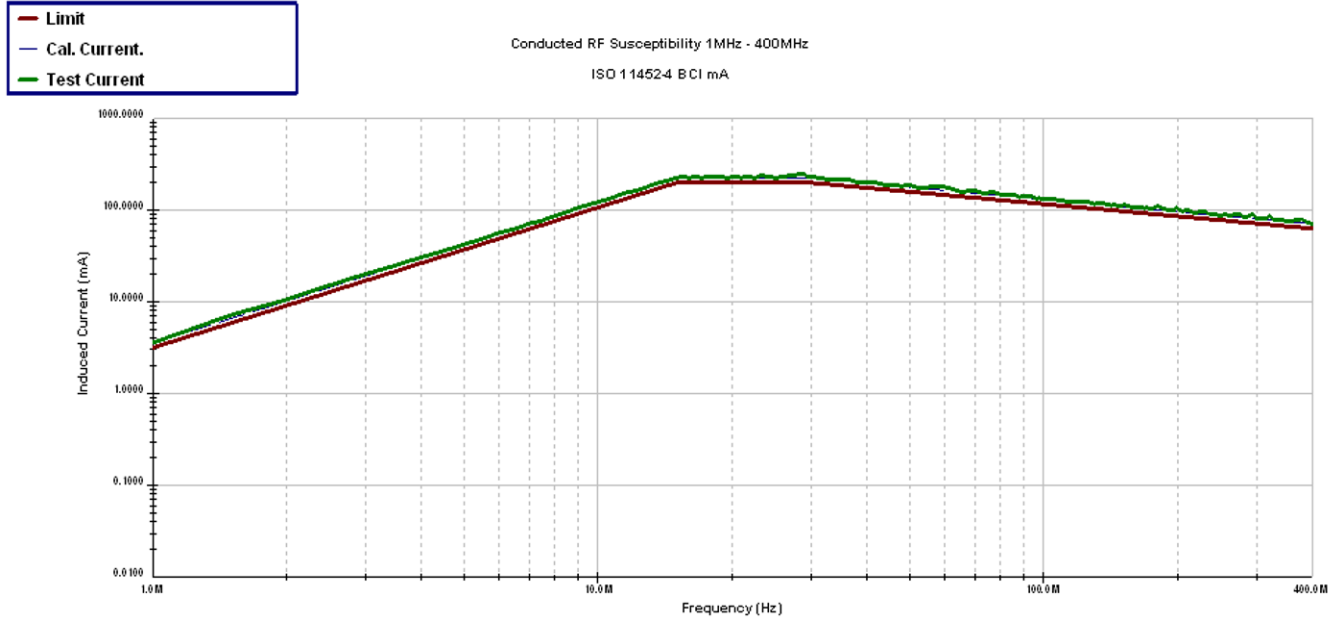


图 68. BCI Results With Current Injection Probe at 450 mm

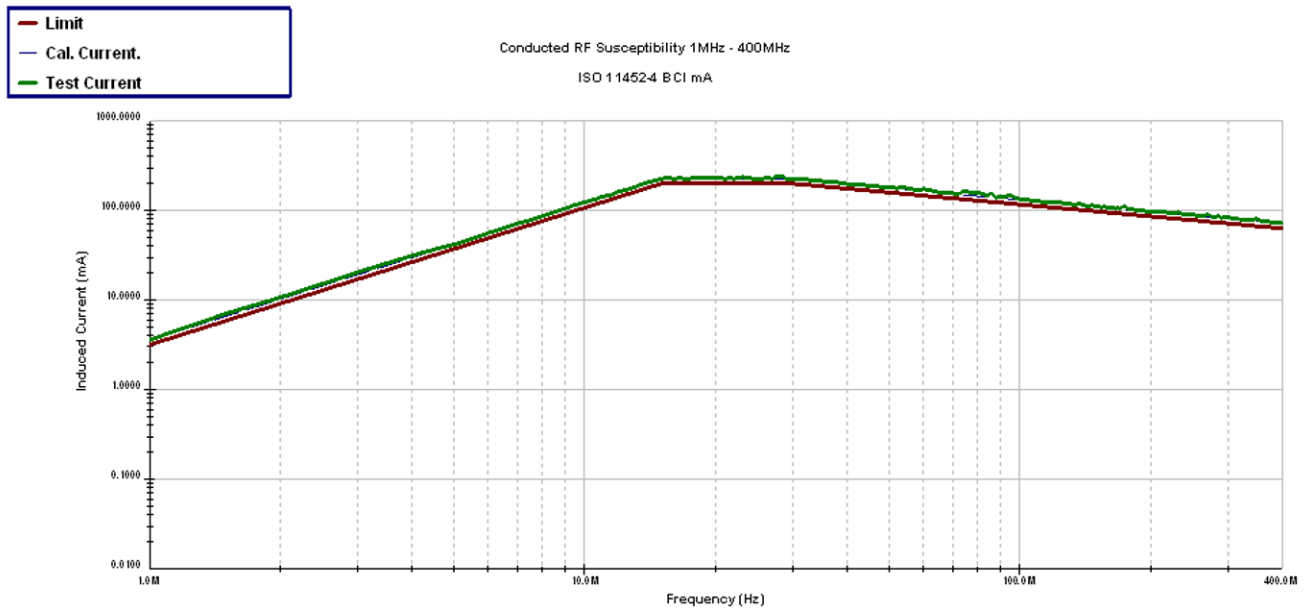


图 69. BCI Results With Current Injection Probe at 750 mm

## 4 Design Files

### 4.1 Schematics

To download the schematics, see the design files at [TIDA-01429](#).

### 4.2 Bill of Materials

To download the bill of materials (BOM), see the design files at [TIDA-01429](#).

### 4.3 PCB Layout Recommendations

This section will cover the following topics:

- Layout considerations for the boost controller
- Layout considerations for the buck converter
- Layout considerations for the LDO
- Layout considerations for the CAN physical layer interface
- The board stackup
- Link to the layer plots for the PCB

#### 4.3.1 Boost Controller Layout Considerations

To produce an optimal power solution with the LM5022-Q1, good layout and design of the PCB are as critical as component selection. The following are the several guidelines in order to create a good PCB layout:

- Using a low-ESR ceramic capacitor, place input capacitors as close as possible to the VIN and GND pins of the LM5022-Q1.
- Using a low-ESR ceramic capacitor, place output capacitors as close to the load as possible of the LM5022-Q1.
- Using a low-ESR ceramic capacitor place the VCC filtering capacitor as close to the VCC and GND pins of the LM5022-Q1.
- Minimize the loop area formed by the output capacitor connections, output diode, and sense resistor making sure the cathode of the diode and output capacitors are close to the sense resistor ground.
- The sense resistor should be connected to the CS pin with a separate trace made as short as possible. This trace should be routed away from the inductor and the switch node (where diode, FET, and inductor connect).
- Minimize the trace length to the FB pin by positioning feedback resistors close to the LM5022-Q1.
- Route the VOUT sense path away from noisy nodes and connect it as close as possible to the positive side of the output capacitors.

#### 4.3.2 Buck Converter Layout Considerations

The following are some guidelines to follow for the TPS57140-Q1 layout:

- Providing a low-inductance, low-impedance ground path is critical. Therefore, use wide and short traces for the main current paths.
- Care should be taken to minimize the loop area formed by the input bypass capacitor, VIN pin, PH pin, catch diode, inductor, and output capacitors. Use thick planes and traces to connect these



components. For operation at a full-rated load, the top-side ground area must provide adequate heat dissipating area.

- The GND pin should be tied directly to the thermal pad under the device and the thermal pad.
- The thermal pad should be connected to any internal PCB ground planes using multiple vias directly under the device.
- The PH pin should be routed to the cathode of the catch diode and to the output inductor. Because the PH connection is the switching node, the catch diode and output inductor should be located close to the PH pin as possible.
- Place the VSENSE voltage-divider resistor network away from switching node and route the feedback trace with minimum interaction with any noise sources associated with the switching components.
- The RT/CLK pin is sensitive to noise, so the RT resistor should be located as close as possible to the device and should be routed with minimal trace lengths.
- Place compensation network components away from switching components and route the connections away from noisy nodes.
- The bootstrap capacitor must be placed as close as possible to the IC pin.

#### 4.3.3 LDO Layout Considerations

Input and output capacitors must be placed as close to the device pins as possible. To improve ac performance (such as PSRR, output noise, and transient response), TI recommends that the board be designed with separate ground planes for VIN and VOUT with the ground plane connected only at the device GND pin. In addition, the output capacitor ground connection must be connected directly to the device GND pin. Lastly, high-ESR capacitors may degrade PSRR performance.

#### 4.3.4 CAN Physical Layer Layout Considerations

Because the CAN physical layer is an external wired interface and can be subjected to transients with frequencies ranging from 100s of Hz to 3 GHz, high-frequency layout techniques must be applied during PCB design. The following are some guidelines to follow for the TCAN1042V-Q1 layout:

- TVS diodes and bus filtering capacitors should be placed as close to the onboard connectors as possible to prevent noisy transient events from propagating further into the PCB and system.
- Provide low-inductance supply and ground connections.
- Use at least two vias in parallel when connecting a power net to another layer on the PCB. This will minimize trace inductance.
- Bypass and bulk capacitors should be placed as close as possible to the supply terminals of transceiver (VCC and VIO).

#### 4.3.5 Board Layer Stackup

The board has been designed using two layers. Both top and bottom layers have signals and power traces routed, but a majority of the bottom layer has been used for a large, low-impedance ground plane. See [表 5](#) for the board stackup. The board is 101.6 mm × 76.2 mm (4" × 3") and uses standard 1-oz copper foil on top and bottom layers. The total board thickness is approximately 63 mils.

**表 5. TIDA-01429 Board Layer Stackup**

LAYER NAME	TYPE	MATERIAL	THICKNESS (MIL)	DIELECTRIC MATERIAL	DIELECTRIC CONSTANT
Top overlay	Overlay	—	—	—	—
Top solder	Solder mask	Surface material	0.4	Solder resist	3.5
Top layer	Signal	Copper	1.4	—	—
Dielectric1	Dielectric	Core	59.2	FR-4	4.8
Bottom layer	Signal	Copper	1.4	—	—
Bottom solder	Solder mask	Surface material	0.4	Solder resist	3.5
Bottom overlay	Overlay	—	—	—	—

#### 4.3.6 Layout Prints

To download the layer plots, see the design files at [TIDA-01429](#).

#### 4.4 Altium Project

To download the Altium project files, see the design files at [TIDA-01429](#).

#### 4.5 Gerber Files

To download the Gerber files, see the design files at [TIDA-01429](#).

#### 4.6 Assembly Drawings

To download the assembly drawings, see the design files at [TIDA-01429](#).

### 5 Related Documentation

1. Texas Instruments, [LM5022-Q1 2.2MHz, 60 V Low-Side Controller For Boost and SEPIC](#), LM5022-Q1 Datasheet (SNVSAG9)
2. Texas Instruments, [TPS57140-Q1 1.5-A 42-V Step-Down DC-DC Converter With Eco-mode™ Control](#), TPS57140-Q1 Datasheet (SLVSAP3)
3. Texas Instruments, [TLV713P-Q1 Capacitor-Free, 150-mA, Low-Dropout Regulator With Foldback Current Limit for Portable Devices](#), TLV71333P-Q1 Datasheet (SBVS266)
4. Texas Instruments, [TCAN1042-Q1 Automotive Fault Protected CAN Transceiver with CAN FD](#), TCAN1042V-Q1 Datasheet (SLLSES9)
5. Texas Instruments, [TMS320F2803x Piccolo™ Microcontrollers](#), TMS320F28030PAGQ Datasheet (SPRS584)
6. Texas Instruments, [Automotive Catalog Dual Inverter Buffer/Driver with Open-Drain Output](#), SN74LVC2G06-Q1 Datasheet (SCES617)
7. Texas Instruments, [Automotive Single Inverter Gate](#), SN74AHCT1G04-Q1 Datasheet (SCLS510)
8. Texas Instruments, [CSD17313Q2 30-V N-Channel NexFET™ Power MOSFET](#), CSD17313Q2 Datasheet (SLPS260)

## 5.1 商标

C2000, Piccolo, NexFET, PowerPAD, Eco-mode, Code Composer Studio are trademarks of Texas Instruments Incorporated.

All other trademarks are the property of their respective owners.

## 6 Terminology

**Body control module**—An automotive electronic control unit responsible for monitoring and controlling vehicle loads. Some examples include interior lighting, exterior lighting, heating ventilation and air conditioning (HVAC), powered windows, and powered door locks.

**Controller**— The term controller is used when referring to a power regulator that has external FETs.

**Converter**— The term converter is used when referring to a power regulator that has integrated FETs.

**Discrete SBC**—The term Discrete SBC (System Basis Chip) is used to refer to the discrete implementation of functional blocks that are commonly integrated into a single IC. This includes power and networking blocks.

**Non-synchronous** —When used in reference to a power regulator, this term means that the regulator uses one FET and one diode for power conversion.

**Synchronous** —When used in reference to a power regulator this term means that the regulator uses two FETs for power conversion. By using a second FET instead of an external diode power losses can be reduced improving overall efficiency.

## 7 About the Author

**JOHN P. GRIFFITH** is a systems engineer at Texas Instruments. As a member of the Automotive Systems Engineering team, John specializes on body control modules and gateway modules, creating end equipment block diagrams, and reference designs for automotive customers. John earned his bachelor of science and master of science in electrical engineering from Rochester Institute of Technology in Rochester, New York.

## 修订版本 A 历史记录

注：之前版本的页码可能与当前版本有所不同。

Changes from Original (July 2017) to A Revision	Page
<ul style="list-style-type: none"> <li>已更改 <b>TIDA-01429</b> 参考设计实施了一款分立式系统基础芯片 (SBC)，配有宽输入电压升压控制器和 8V 宽输入电压升压转换器。升压转换器配有一个宽输入电压、5V 固定降压转换器（用于为控制器局域网 (CAN) 收发器供电）和一个紧凑型 3.3V 固定电压线性压降 (LDO) 稳压器（用于为 C2000™ 微控制器 (MCU) 供电）。更改为 <b>TIDA-01429</b> 参考设计实施了一款分立式系统基础芯片 (SBC)，配有输出电压设置为 8V 的宽输入电压升压电路。升压电路配有一个输出电压设置为 5V 的宽输入电压降压转换器（用于为控制器局域网 (CAN) 收发器供电）和一个紧凑型 3.3V 固定电压线性压降 (LDO) 稳压器（用于为 C2000™ 微控制器 (MCU) 供电）。.....</li> </ul>	1

## 有关 TI 设计信息和资源的重要通知

德州仪器 (TI) 公司提供的技术、应用或其他设计建议、服务或信息，包括但不限于与评估模块有关的参考设计和材料（总称“TI 资源”），旨在帮助设计人员开发整合了 TI 产品的应用；如果您（个人，或如果是代表贵公司，则为贵公司）以任何方式下载、访问或使用了任何特定的 TI 资源，即表示贵方同意仅为该等目标，按照本通知的条款进行使用。

TI 所提供的 TI 资源，并未扩大或以其他方式修改 TI 对 TI 产品的公开适用的质保及质保免责声明；也未导致 TI 承担任何额外的义务或责任。TI 有权对其 TI 资源进行纠正、增强、改进和其他修改。

您理解并同意，在设计应用时应自行实施独立的分析、评价和判断，且应全权负责并确保应用的安全性，以及您的应用（包括应用中使用的 TI 产品）应符合所有适用的法律法规及其他相关要求。您就您的应用声明，您具备制订和实施下列保障措施所需的一切必要专业知识，能够 (1) 预见故障的危险后果，(2) 监视故障及其后果，以及 (3) 降低可能导致危险的故障几率并采取适当措施。您同意，在使用或分发包含 TI 产品的任何应用前，您将彻底测试该等应用和该等应用所用 TI 产品的功能。除特定 TI 资源的公开文档中明确列出的测试外，TI 未进行任何其他测试。

您只有在为开发包含该等 TI 资源所列 TI 产品的应用时，才被授权使用、复制和修改任何相关单项 TI 资源。但并未依据禁止反言原则或其他法律授予您任何 TI 知识产权的任何其他明示或默示的许可，也未授予您 TI 或第三方的任何技术或知识产权的许可，该等产权包括但不限于任何专利权、版权、屏蔽作品权或与使用 TI 产品或服务的任何整合、机器制作、流程相关的其他知识产权。涉及或参考了第三方产品或服务的信息不构成使用此类产品或服务的许可或与其相关的保证或认可。使用 TI 资源可能需要您向第三方获得对该等第三方专利或其他知识产权的许可。

TI 资源系“按原样”提供。TI 兹免除对 TI 资源及其使用作出所有其他明确或默示的保证或陈述，包括但不限于对准确性或完整性、产权保证、无复发故障保证，以及适销性、适合特定用途和不侵犯任何第三方知识产权的任何默认保证。

TI 不负责任何申索，包括但不限于因组合产品所致或与之有关的申索，也不为您辩护或赔偿，即使该等产品组合已列于 TI 资源或其他地方。对因 TI 资源或其使用引起或与之有关的任何实际的、直接的、特殊的、附带的、间接的、惩罚性的、偶发的、从属或惩戒性损害赔偿，不管 TI 是否获悉可能会产生上述损害赔偿，TI 概不负责。

您同意向 TI 及其代表全额赔偿因您不遵守本通知条款和条件而引起的任何损害、费用、损失和/或责任。

本通知适用于 TI 资源。另有其他条款适用于某些类型的材料、TI 产品和服务的使用和采购。这些条款包括但不限于适用于 TI 的半导体产品 (<http://www.ti.com/sc/docs/stdterms.htm>)、[评估模块](http://www.ti.com/sc/docs/sampters.htm)和样品 (<http://www.ti.com/sc/docs/sampters.htm>) 的标准条款。

邮寄地址：上海市浦东新区世纪大道 1568 号中建大厦 32 楼，邮政编码：200122  
Copyright © 2017 德州仪器半导体技术（上海）有限公司