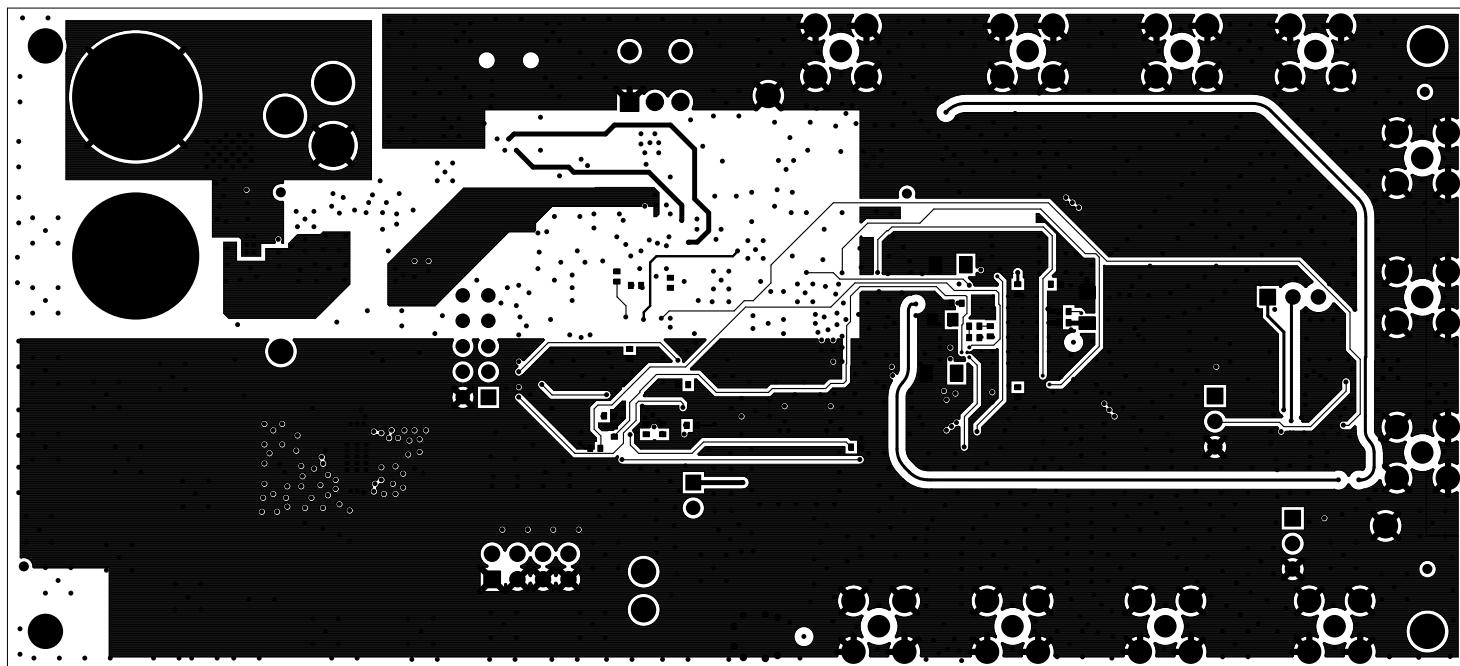
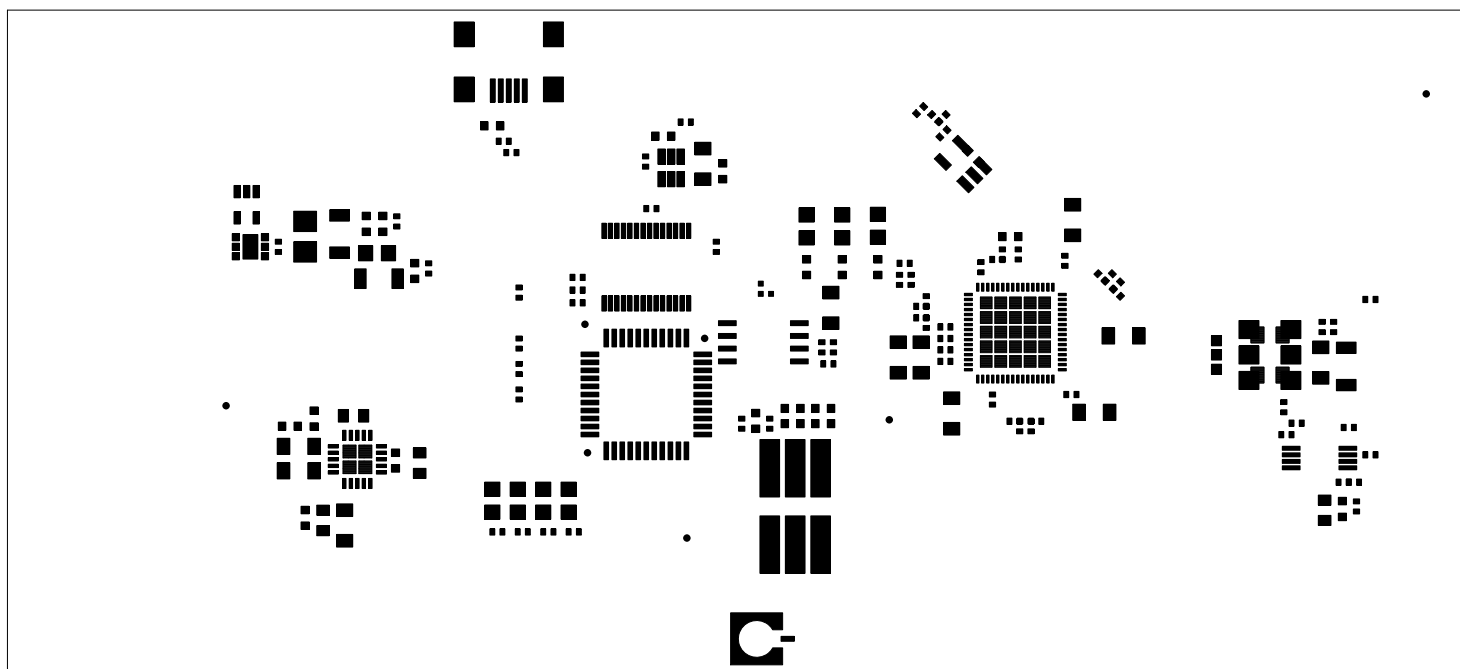


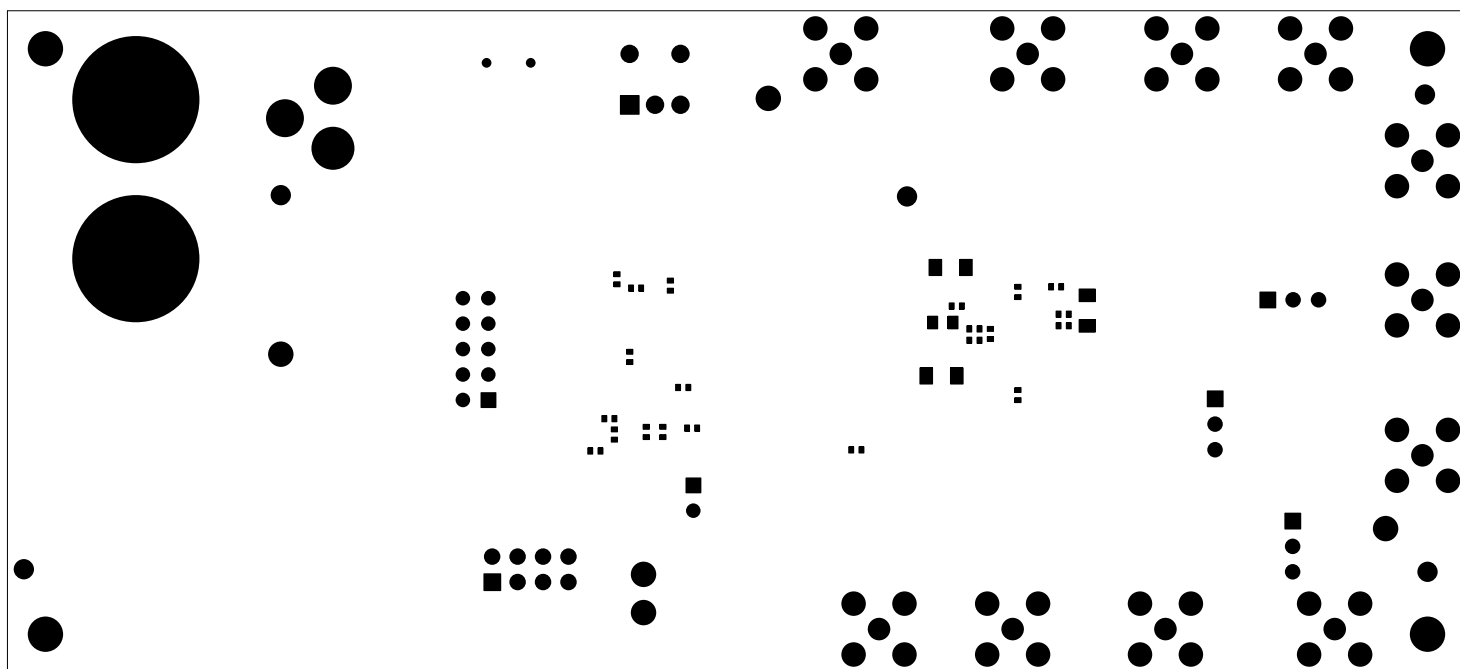
TEXAS INSTRUMENTS
TSW4806 REV A
LAYER 1 - TOP SIDE



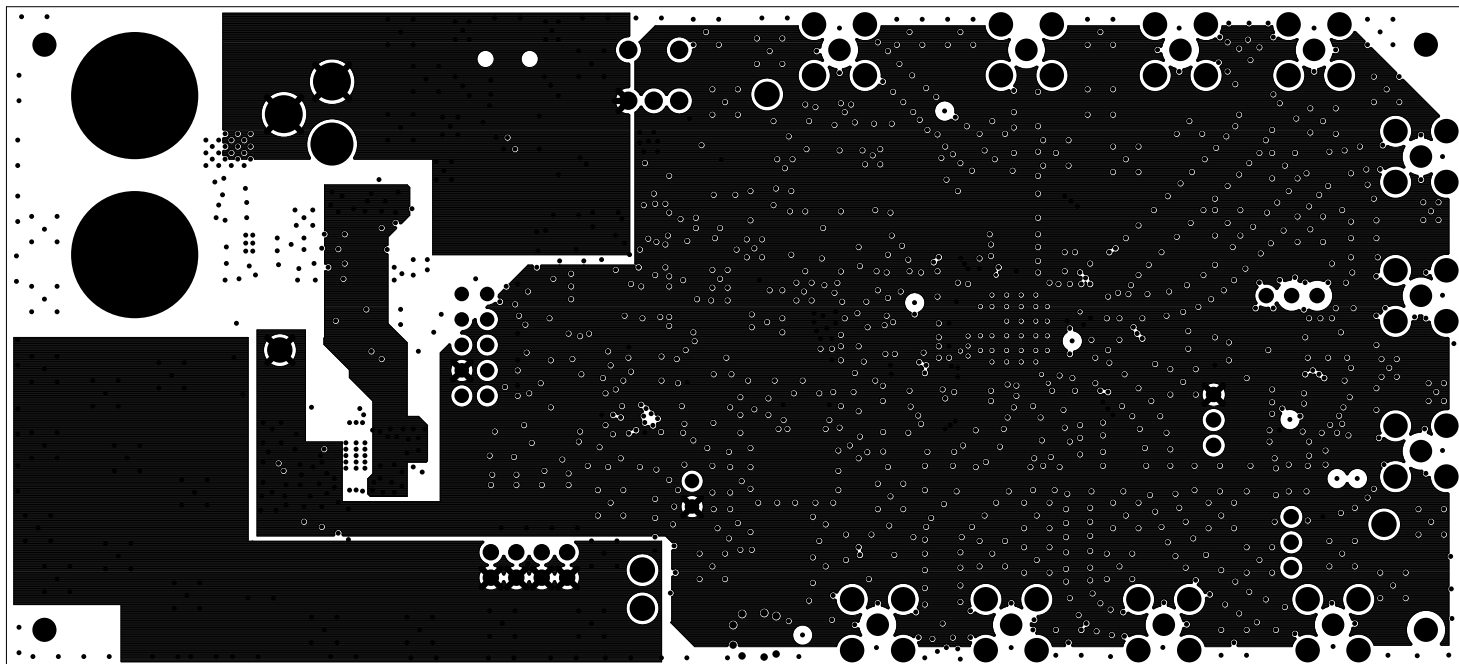
TEXAS INSTRUMENTS
TSW4806 REV A
LAYER 6 - BOTTOM SIDE



TEXAS INSTRUMENTS
TSW4806 REV A
PASTEMASK TOP

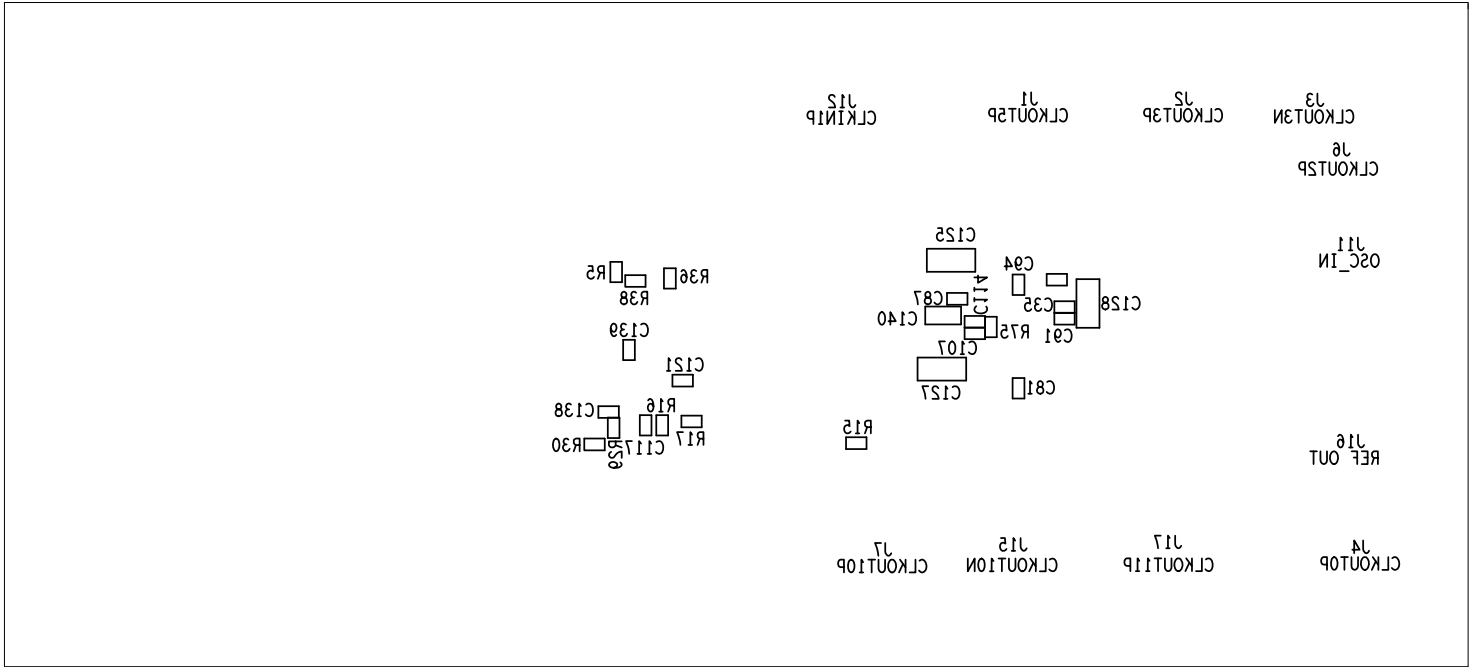


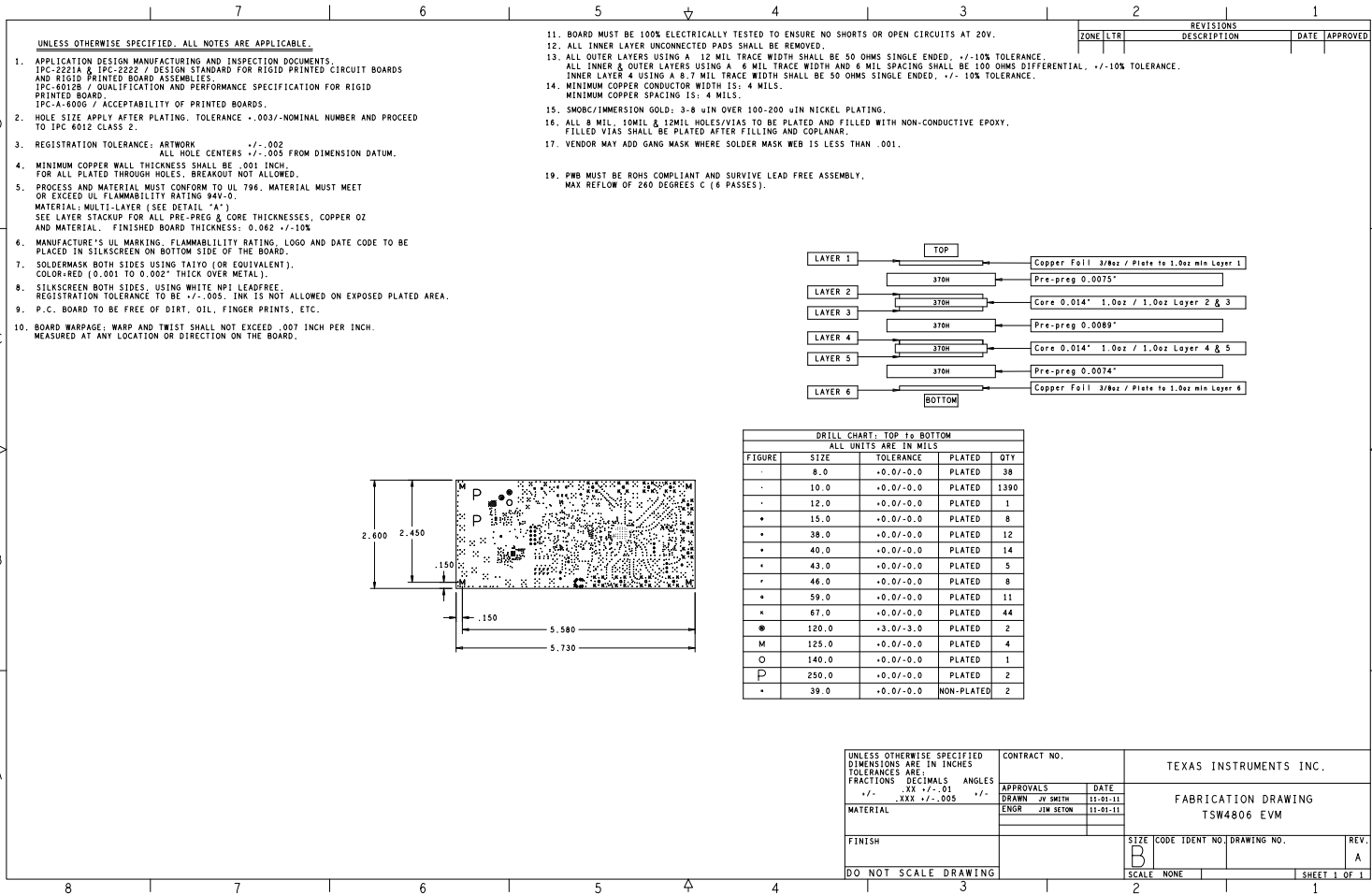
TEXAS INSTRUMENTS
TSW4806 REV A
SOLDERMASK BOTTOM



TEXAS INSTRUMENTS
TSW4806 REV A
LAYER 3 - PWR

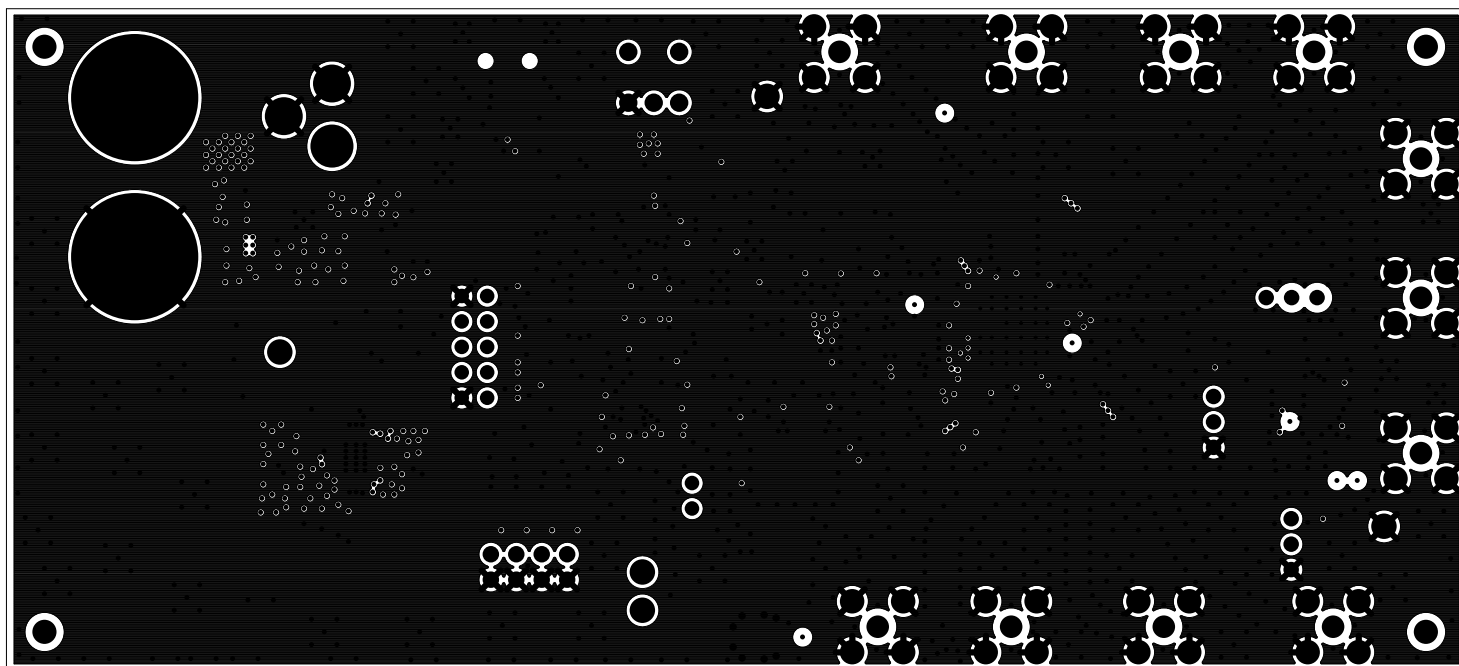




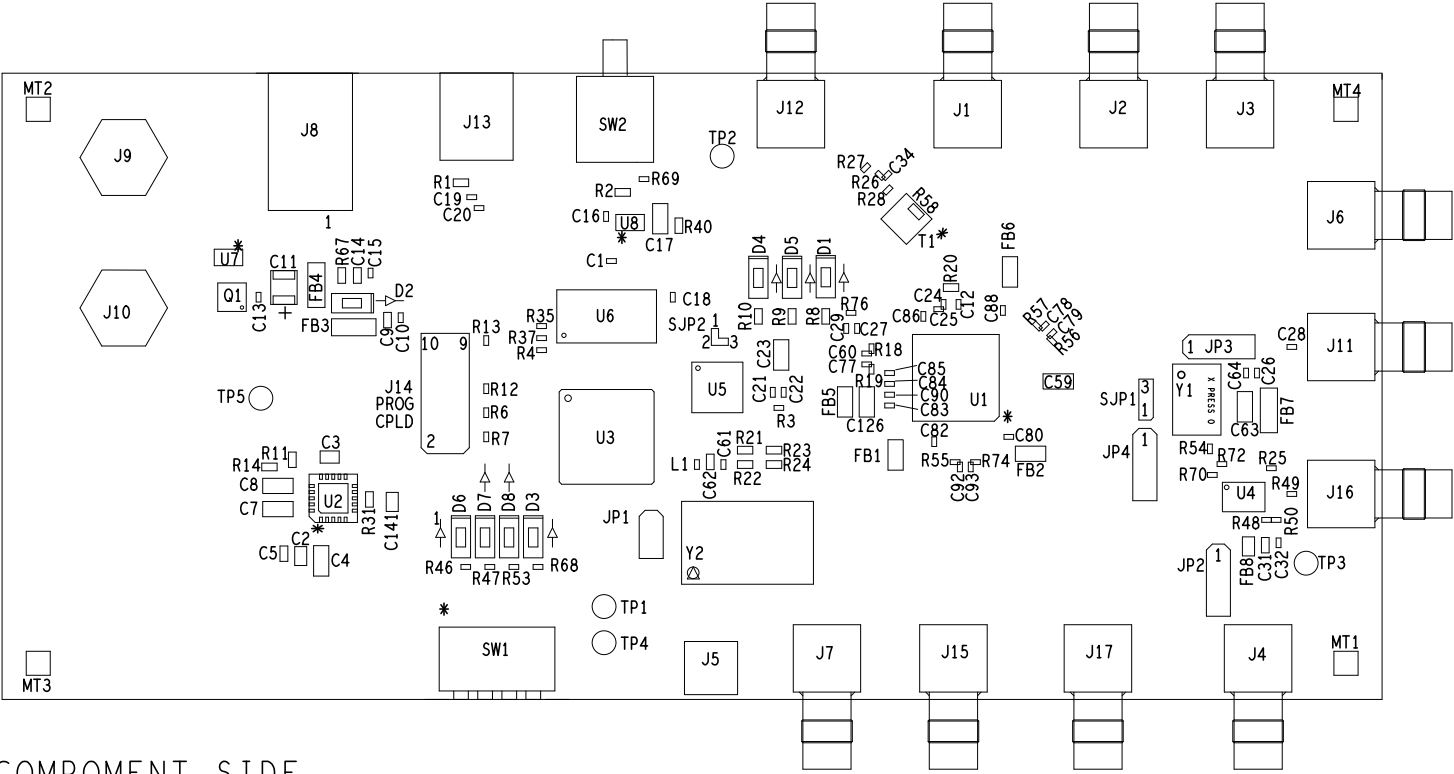




TEXAS INSTRUMENTS
TSW4806 REV A
PASTEMASK BOTTOM

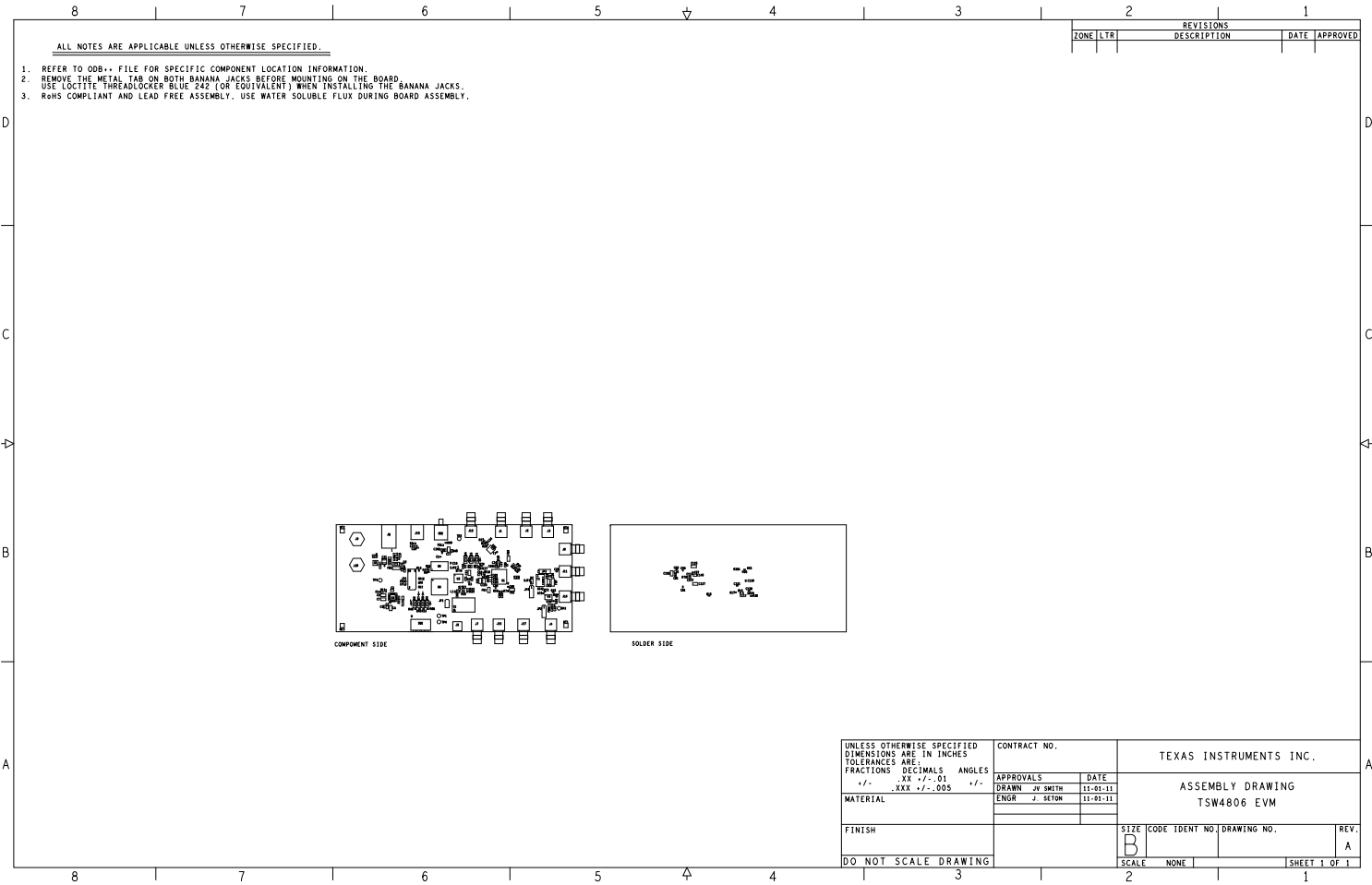


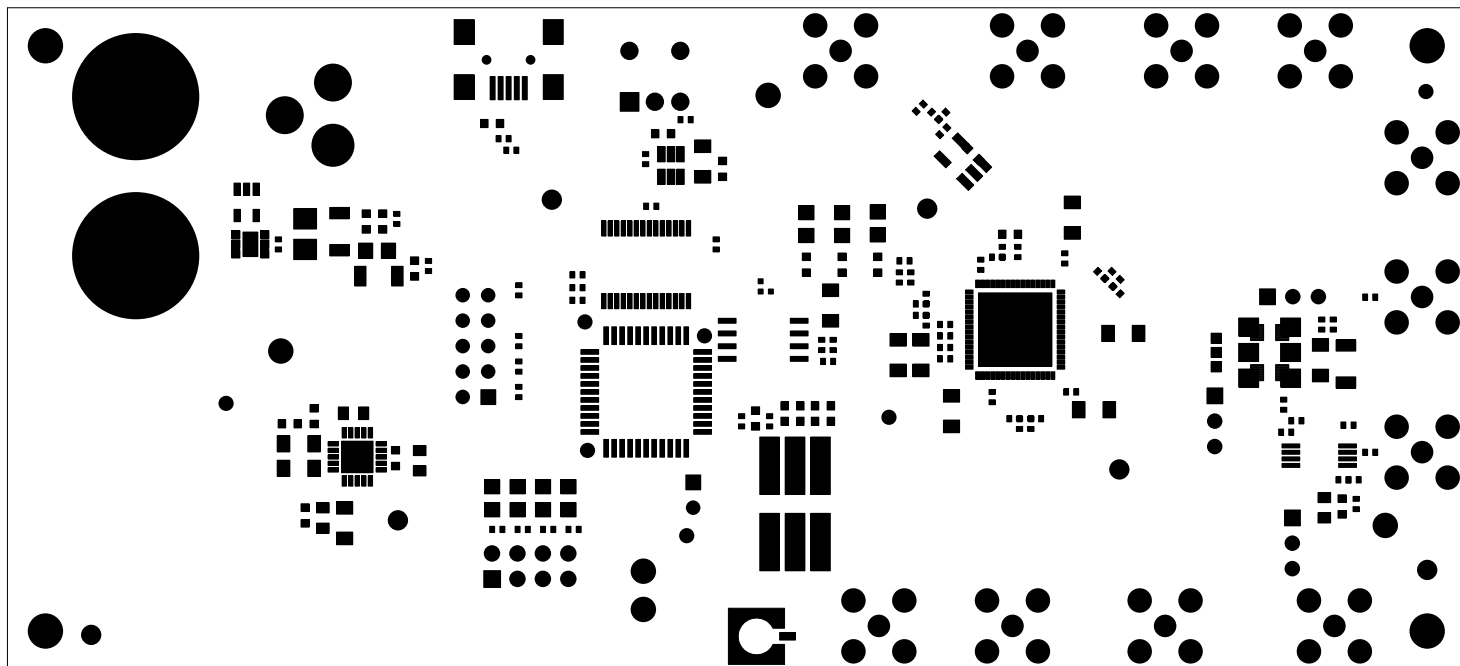
TEXAS INSTRUMENTS
TSW4806 REV A
LAYER 5 - GND



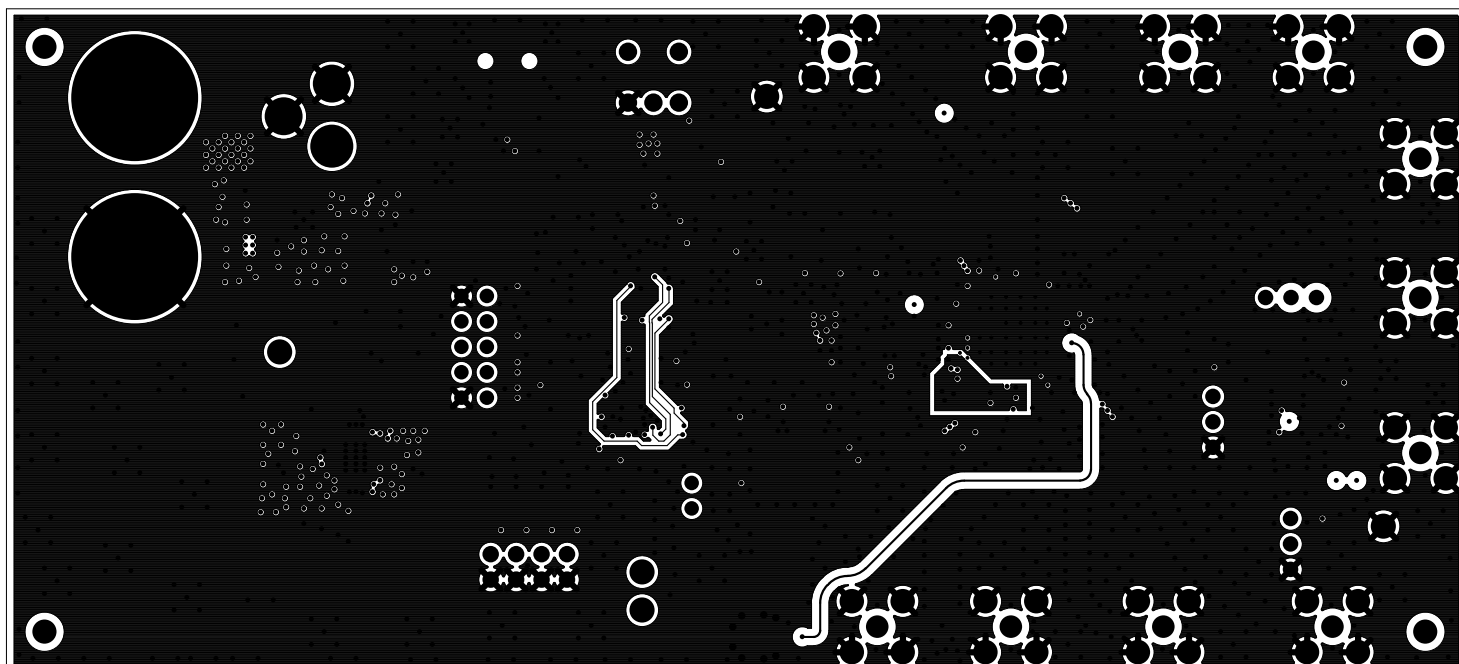
COMPONENT SIDE

C158
C32
C81
C80
C84
C114
C140
C107
C157
C81
R12
C152
C151
C130
C138
R16
R50
C117
R30
R38
R39
R2

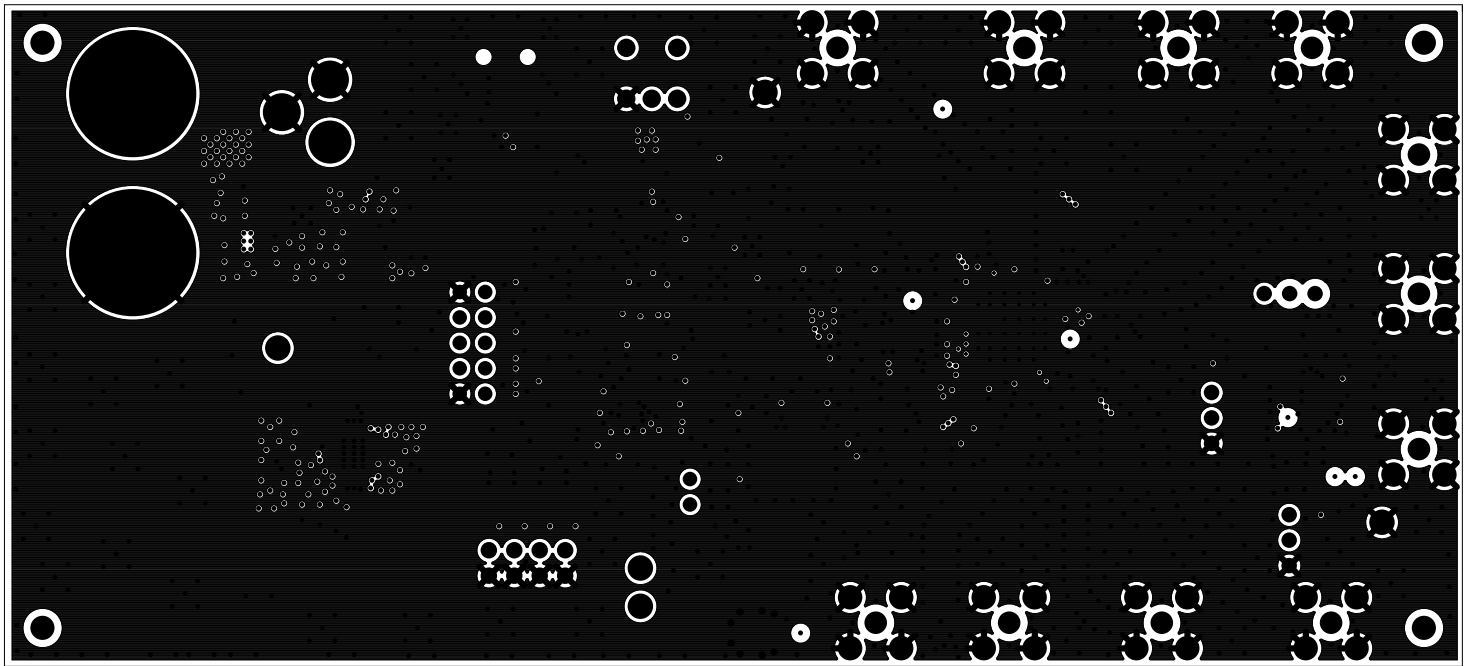




TEXAS INSTRUMENTS
TSW4806 REV A
SOLDERMASK TOP



TEXAS INSTRUMENTS
TSW4806 REV A
LAYER 4 - PWR



TEXAS INSTRUMENTS
TSW4806 REV A
LAYER 2 - GND