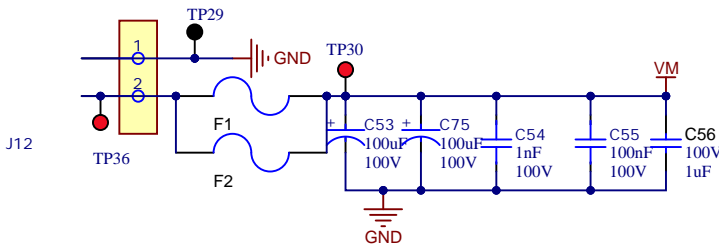


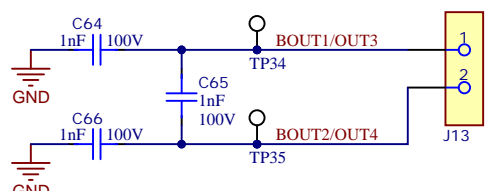
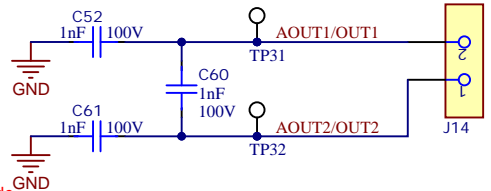
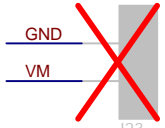
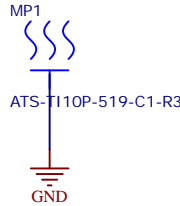
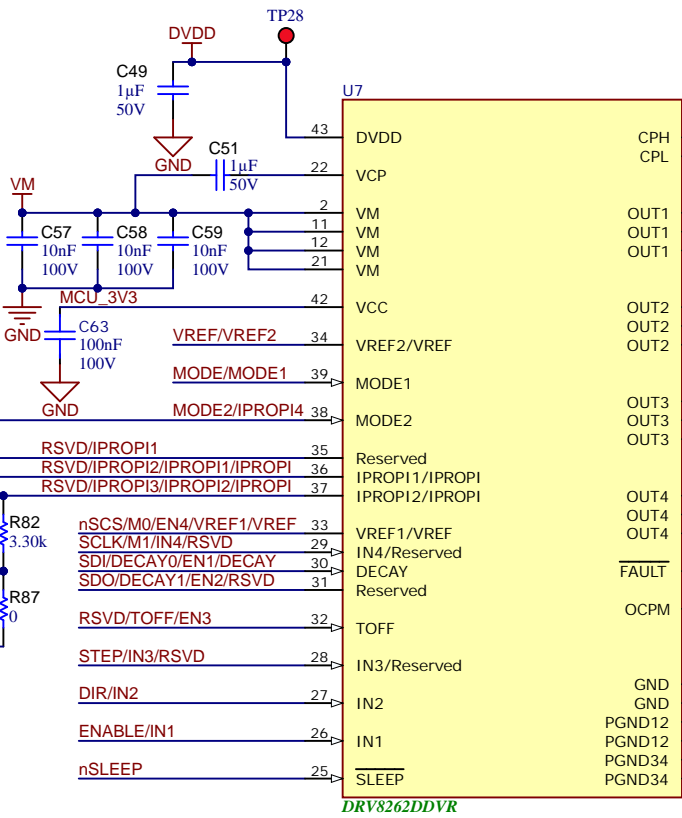
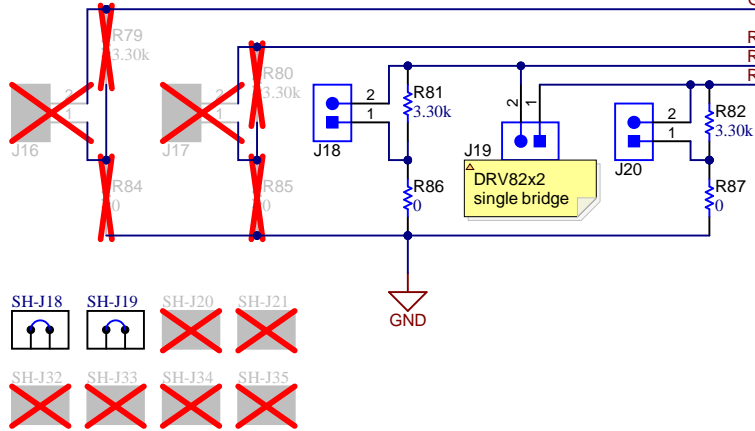
Motor Driver

4.5 - 48V DC (DRV8452; DRV8252, DRV8952)

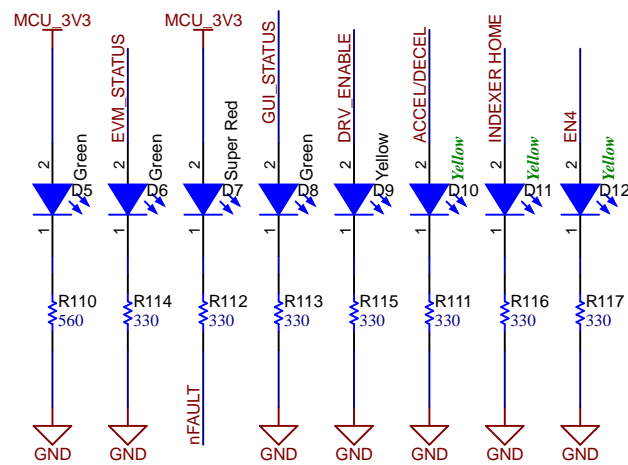
4.5 - 60V DC (DRV8462; DRV8262, DRV8962)



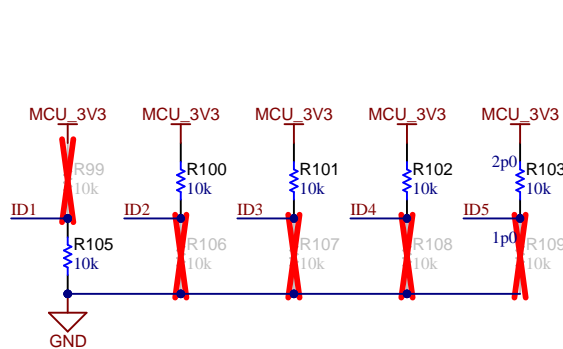
Select R_IPROPI, connect to disable current regulation



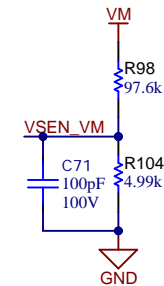
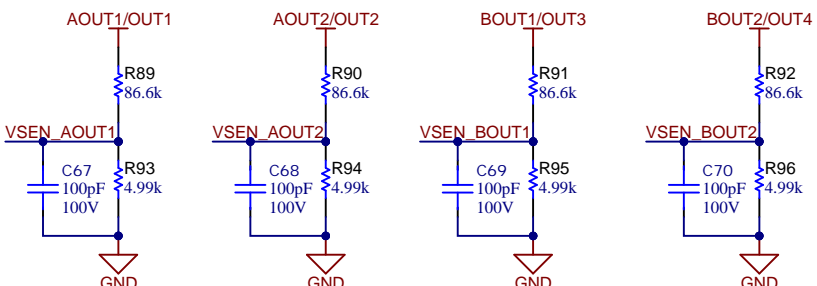
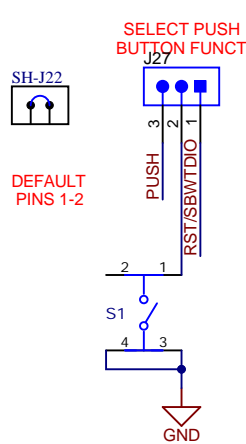
LEDS



ID



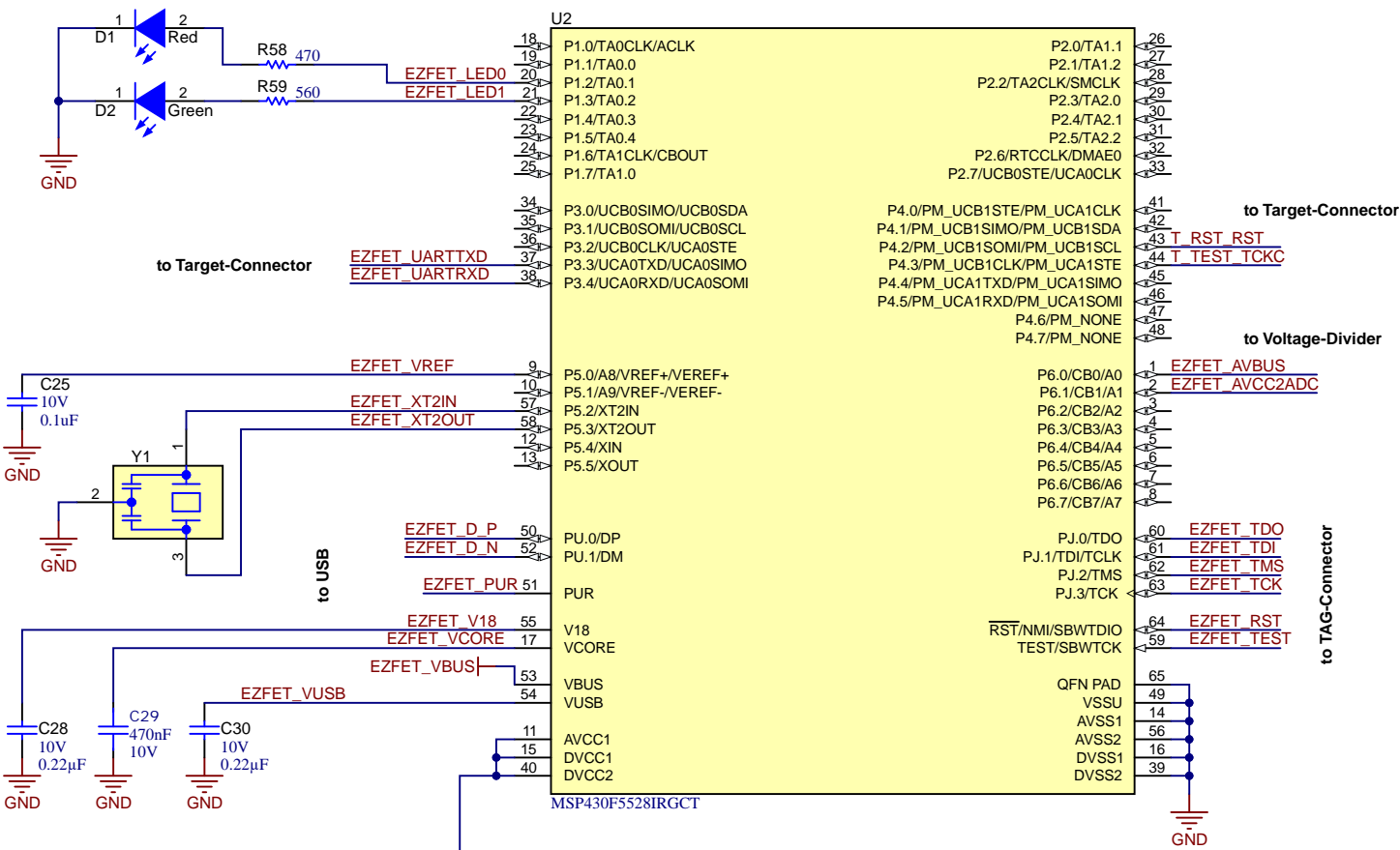
BUTTON



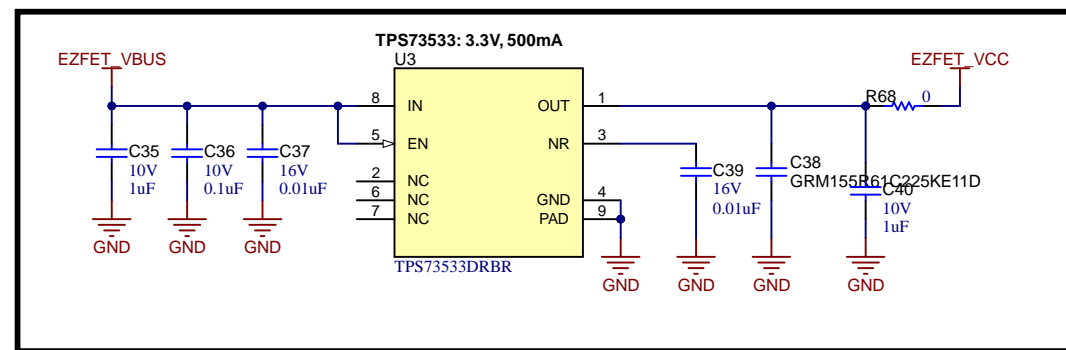
Texas Instruments and/or its licensors do not warrant the accuracy or completeness of this specification or any information contained therein. Texas Instruments and/or its licensors do not warrant that this design will meet the specifications, will be suitable for your application or fit for any particular purpose, or will operate in an implementation. Texas Instruments and/or its licensors do not warrant that the design is production worthy. You should completely validate and test your design implementation to confirm the system functionality for your application.

Orderable: DRV8262VEVM	Designed for: Public Release	Mod. Date: 6/20/2023
TID #: N/A	Project Title: DRV8x62VEVM	
Number: MD041	Rev: A	Sheet Title:
SVN Rev: Not in version control	Assembly Variant: 003	Sheet: 1 of 4
Drawn By:	File: MD041_Motor_Driver_RevA.SchDoc	Size: B
Engineer: Akshay Rajeev Menon	Contact: http://www.ti.com/support	http://www.ti.com
© Texas Instruments 2022		

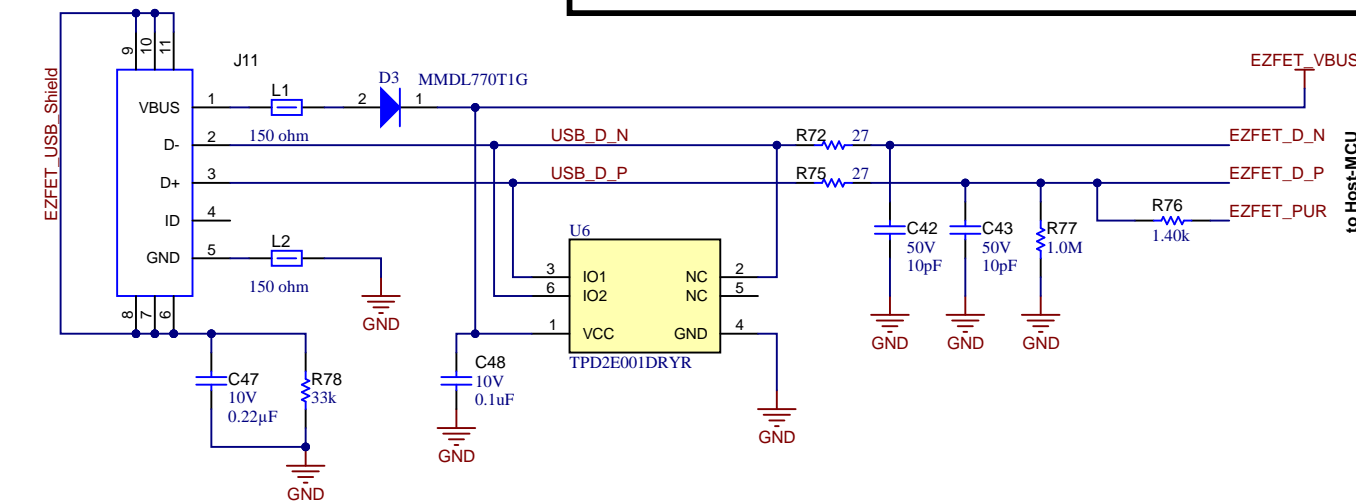
Host MCU for Emulation



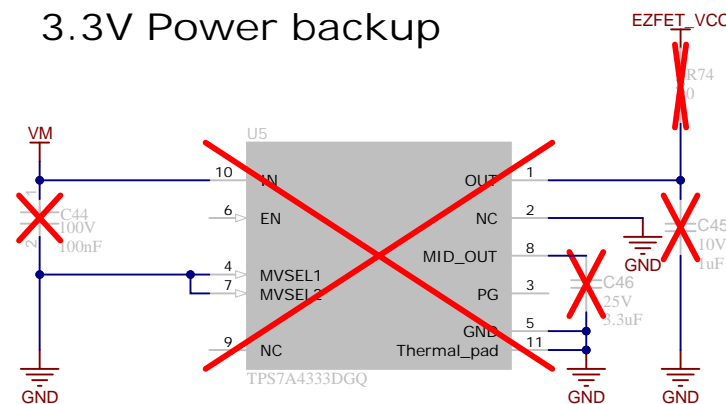
3.3V Power (EZFET_VCC)



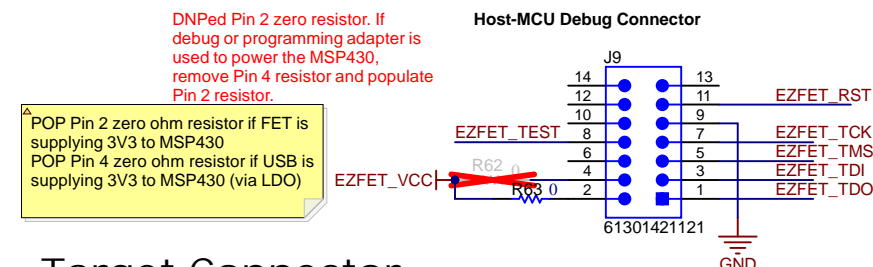
USB-Interface



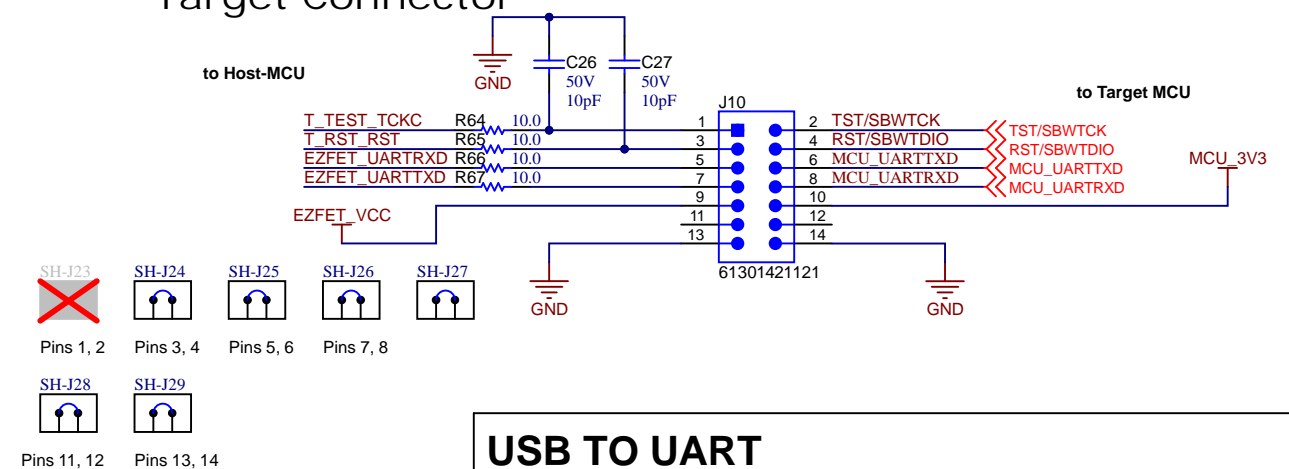
3.3V Power backup



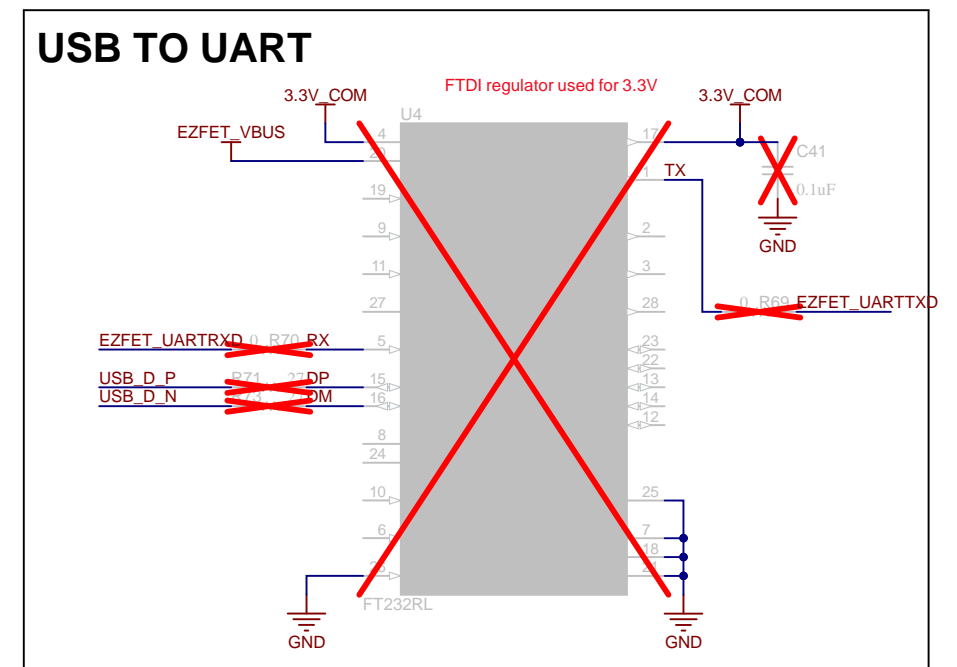
TAG-Connector (Host Debug)



Target Connector



USB TO UART



MSP430F5338

C2000 (LAUNCHXL-F280025C) connectors

