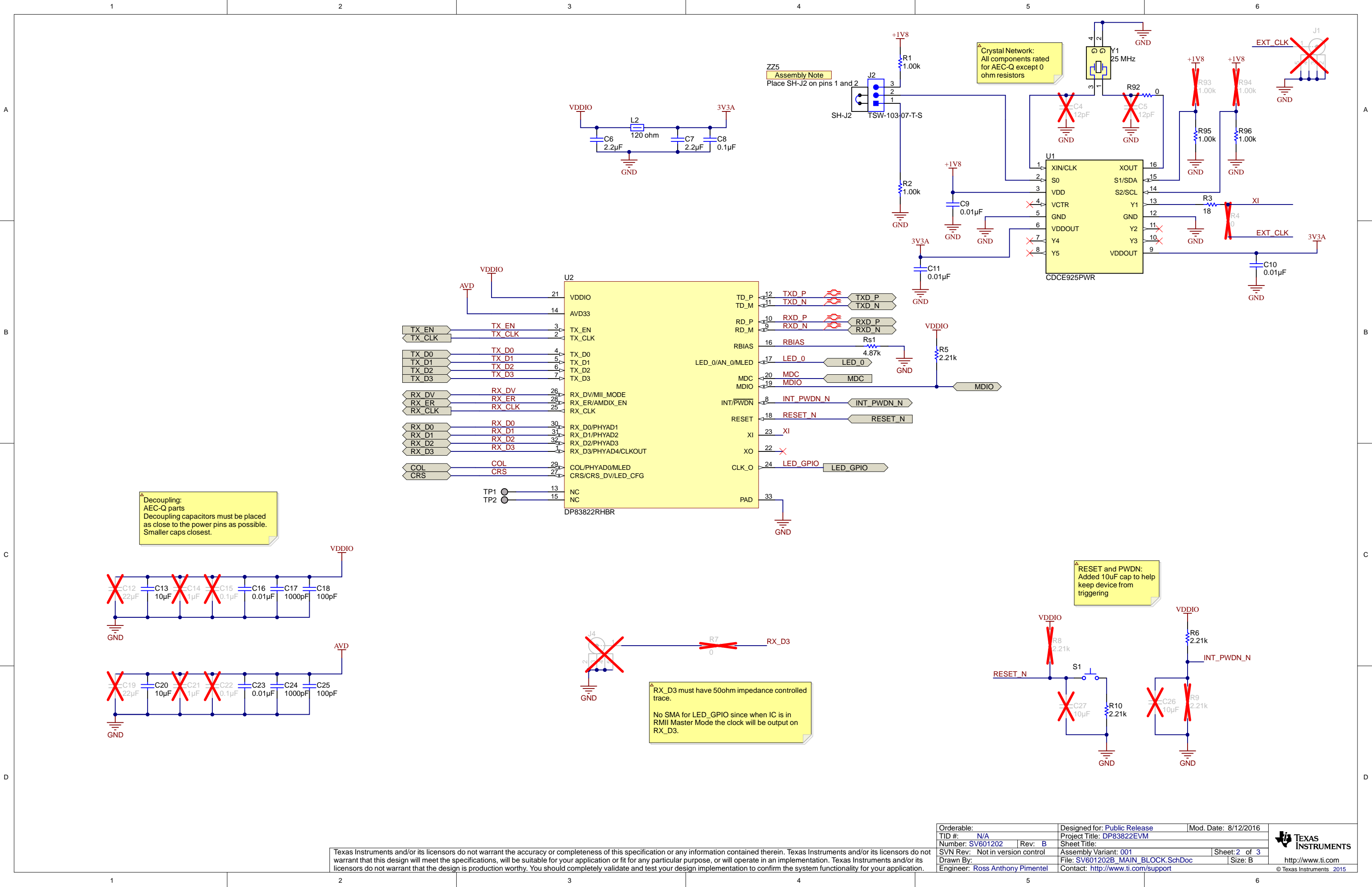


Texas Instruments and/or its licensors do not warrant the accuracy or completeness of this specification or any information contained therein. Texas Instruments and/or its licensors do not warrant that this design will meet the specifications, will be suitable for your application or fit for any particular purpose, or will operate in an implementation. Texas Instruments and/or its licensors do not warrant that the design is production worthy. You should completely validate and test your design implementation to confirm the system functionality for your application.

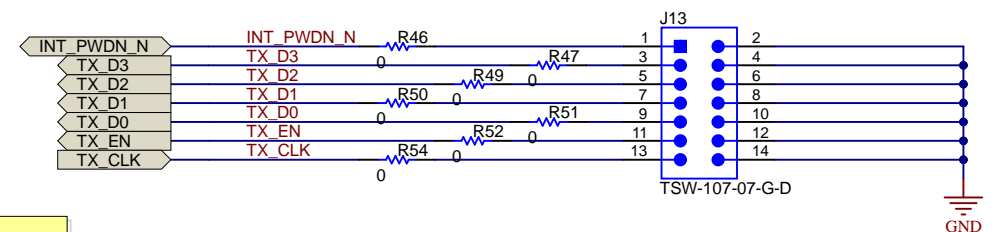
Orderable:	Designed for: Public Release	Mod. Date: 8/12/2016
TID #: N/A	Project Title: DP83822EVM	
Number: SV601202	Rev: B	Sheet Title:
SVN Rev: Not in version control	Assembly Variant: 001	Sheet: 2 of 3
Drawn By:	File: SV601202B_POWER_BLOCK.SchDoc	Size: B
Engineer: Ross Anthony Pimentel	Contact: http://www.ti.com/support	



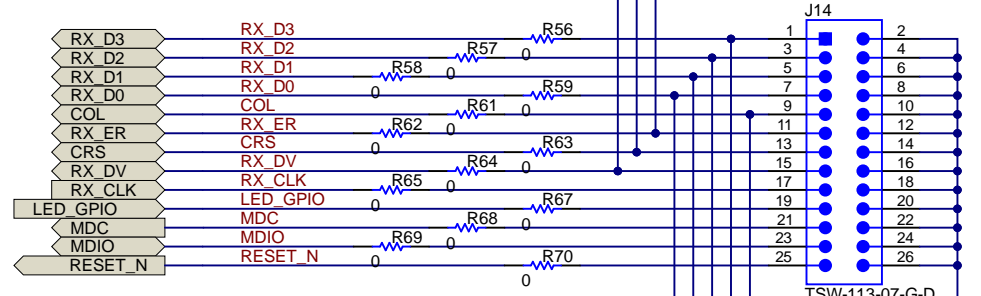
Texas Instruments and/or its licensors do not warrant the accuracy or completeness of this specification or any information contained therein. Texas Instruments and/or its licensors do not warrant that this design will meet the specifications, will be suitable for your application or fit for any particular purpose, or will operate in an implementation. Texas Instruments and/or its licensors do not warrant that the design is production worthy. You should completely validate and test your design implementation to confirm the system functionality for your application.

Orderable:	Designed for: Public Release	Mod. Date: 8/12/2016
TID #: N/A	Project Title: DP83822EVM	
Number: SV601202	Rev: B	Sheet Title:
SVN Rev: Not in version control	Assembly Variant: 001	Sheet: 2 of 3
Drawn By:	File: SV601202B_MAIN_BLOCK.SchDoc	Size: B
Engineer: Ross Anthony Pimentel	Contact: http://www.ti.com/support	

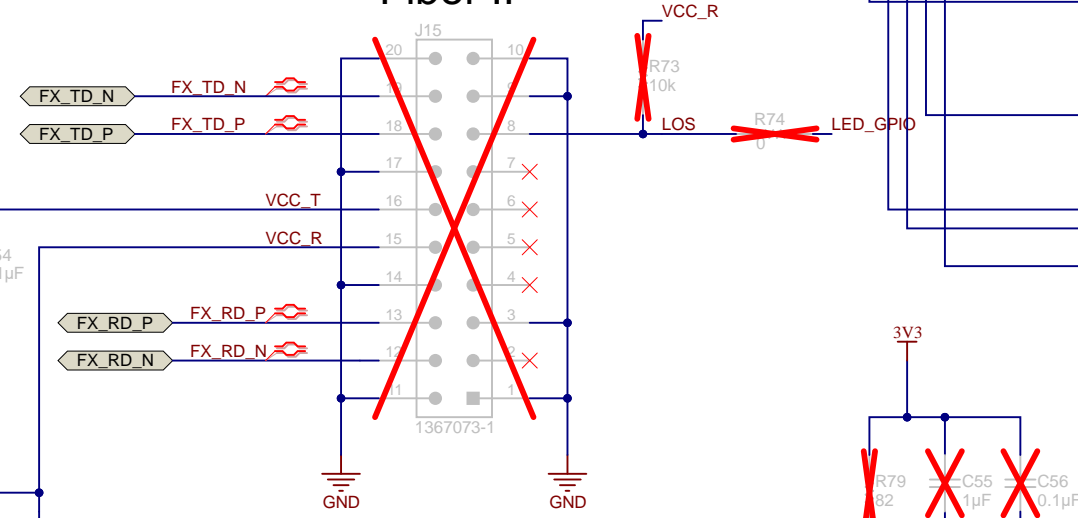
MAC IF



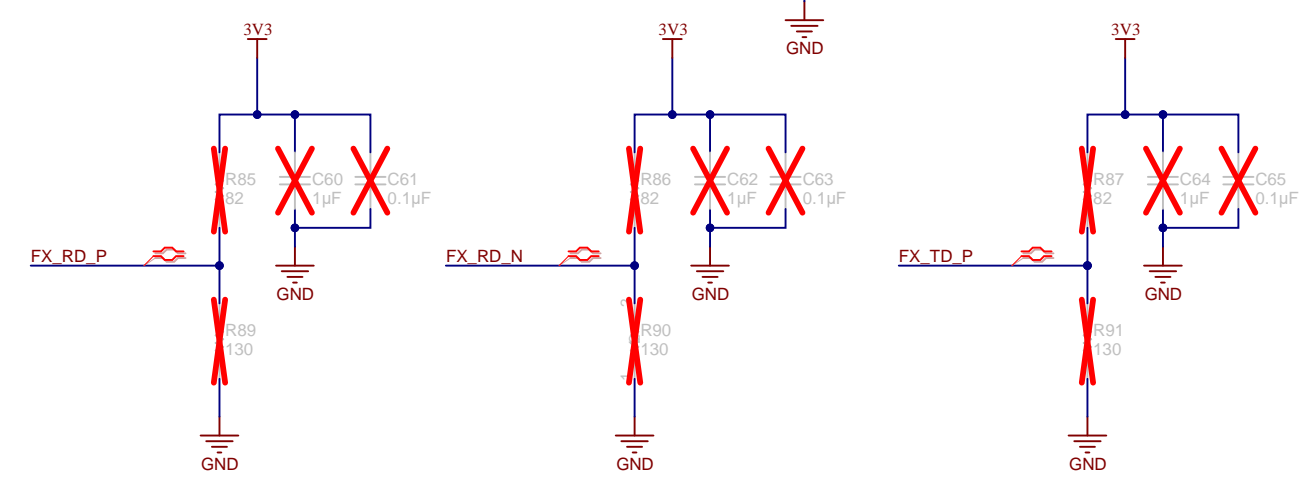
DC coupling:
MAC IF 0 ohm resistors must be placed as close to the IC as possible to reduce stubs if a trace is not used.
Close to where the straps are



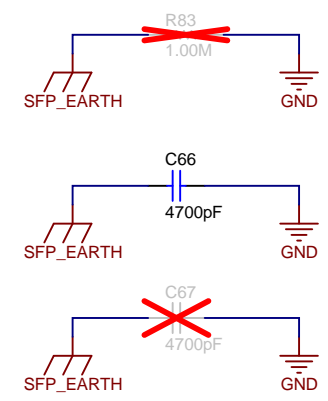
Fiber IF



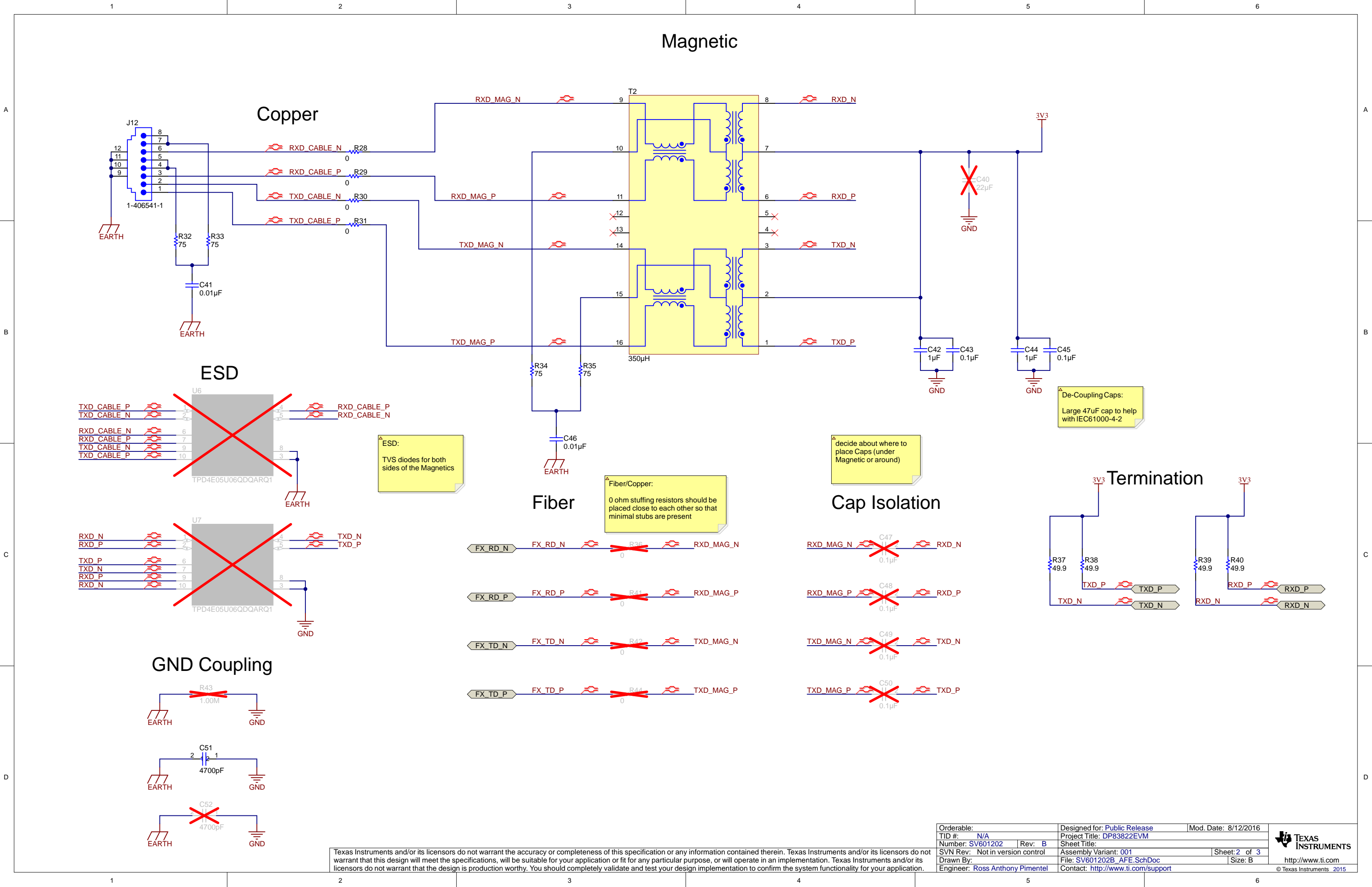
LVPECL Termination



GND Coupling



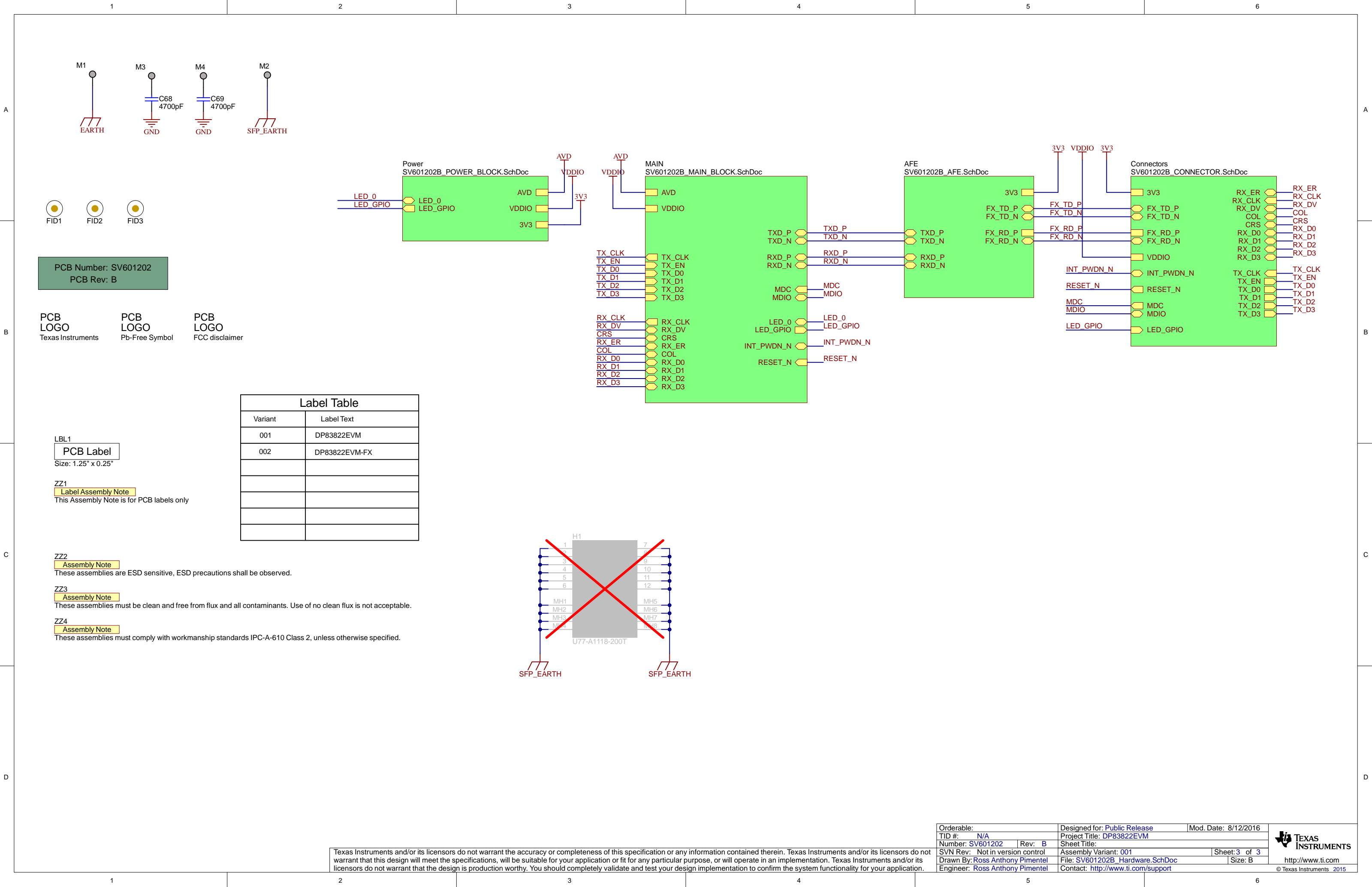
Pull-Up Pins:
COL
LED_0
CRS
RX_ER
Pull-Down Pins:
RX_D0
RX_D1
RX_D2
RX_D3
RX_DV



Texas Instruments and/or its licensors do not warrant the accuracy or completeness of this specification or any information contained therein. Texas Instruments and/or its licensors do not warrant that this design will meet the specifications, will be suitable for your application or fit for any particular purpose, or will operate in an implementation. Texas Instruments and/or its licensors do not warrant that the design is production worthy. You should completely validate and test your design implementation to confirm the system functionality for your application.

Orderable:	Designed for: Public Release	Mod. Date: 8/12/2016
TID #: N/A	Project Title: DP83822EVM	
Number: SV601202	Rev: B	Sheet Title:
SVN Rev: Not in version control	Assembly Variant: 001	Sheet: 2 of 3
Drawn By:	File: SV601202B_AFE.SchDoc	Size: B
Engineer: Ross Anthony Pimentel	Contact: http://www.ti.com/support	

TEXAS INSTRUMENTS
<http://www.ti.com>
© Texas Instruments 2015



Texas Instruments and/or its licensors do not warrant the accuracy or completeness of this specification or any information contained therein. Texas Instruments and/or its licensors do not warrant that this design will meet the specifications, will be suitable for your application or fit for any particular purpose, or will operate in an implementation. Texas Instruments and/or its licensors do not warrant that the design is production worthy. You should completely validate and test your design implementation to confirm the system functionality for your application.

Orderable:	Designed for: Public Release	Mod. Date: 8/12/2016
TID #: N/A	Project Title: DP83822EVM	
Number: SV601202	Rev: B	Sheet Title:
SVN Rev: Not in version control	Assembly Variant: 001	Sheet: 3 of 3
Drawn By: Ross Anthony Pimentel	File: SV601202B_Hardware.SchDoc	Size: B
Engineer: Ross Anthony Pimentel	Contact: http://www.ti.com/support	