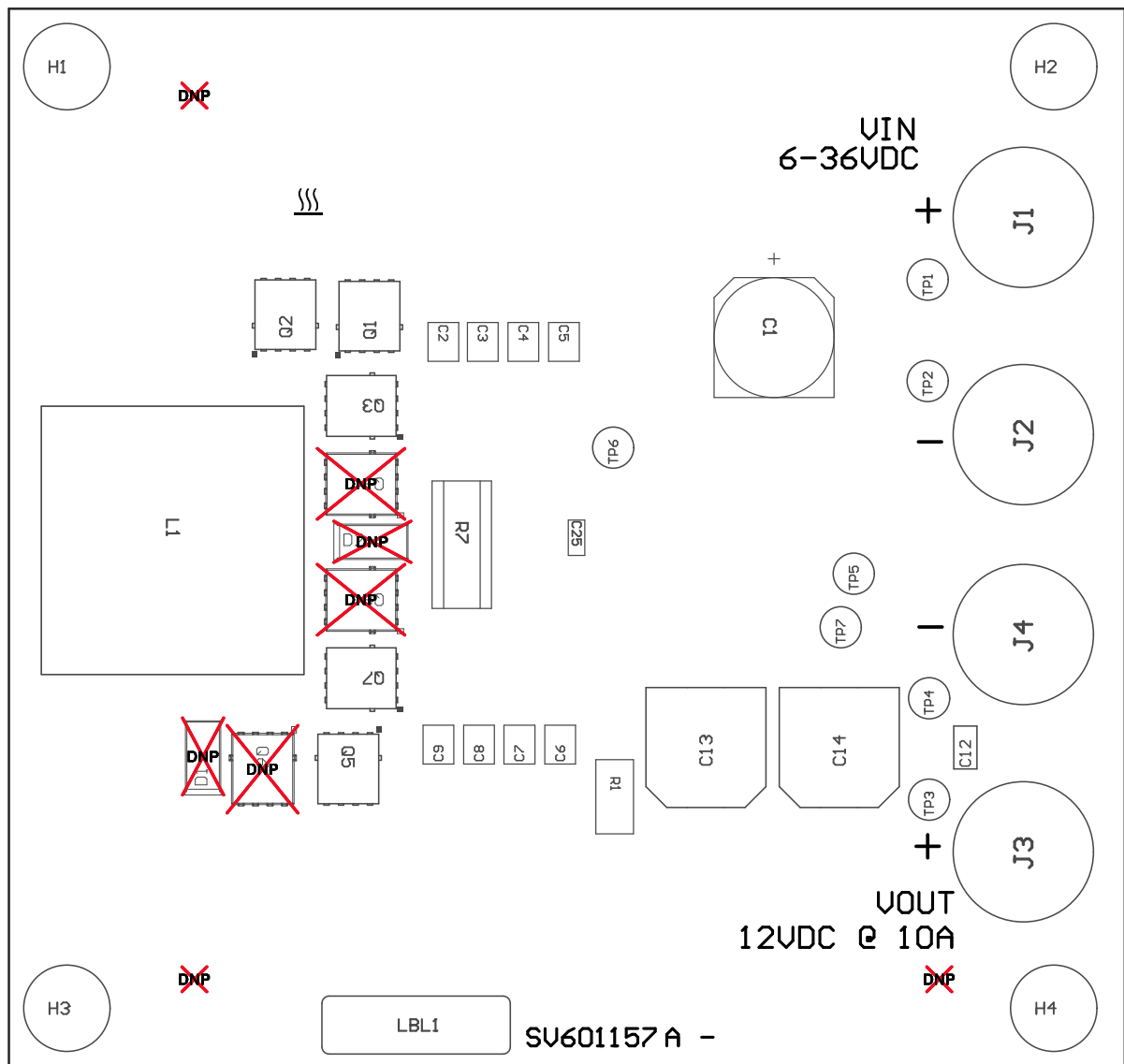


- ZZ1 ■ Install label in silkscreened box after final wash. Text shall be 8 pt font. Text shall be per the Label Table in the PDF schematic.
 ZZ2 ■ These assemblies are ESD sensitive, ESD precautions shall be observed.
 ZZ3 ■ These assemblies must be clean and free from flux and all contaminants. Use of no clean flux is not acceptable.
 ZZ4 ■ These assemblies must comply with workmanship standards IPC-A-610 Class 2, unless otherwise specified.
 ZZ5 ■ Remove Kapton tape from switches S1 thru S3 on PCB Bottom side after final wash.
 ZZ6 ■ Set S1 switch to 'CCM' position as per silkscreen label
 ZZ7 ■ Set S2 switch to Center position
 ZZ8 ■ Set S3 switch to 'OFF' position per silk screen label.



COMPONENTS MARKED 'DNP' SHOULD NOT BE POPULATED.
 ASSEMBLY VARIANT: 001

