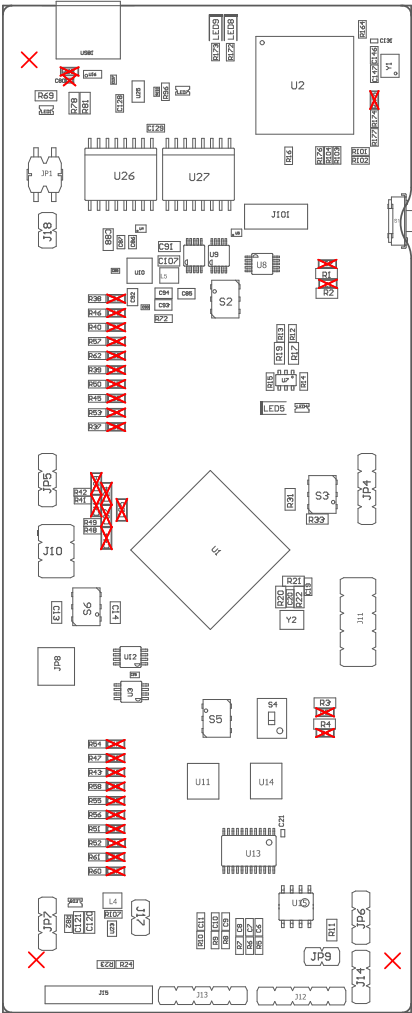
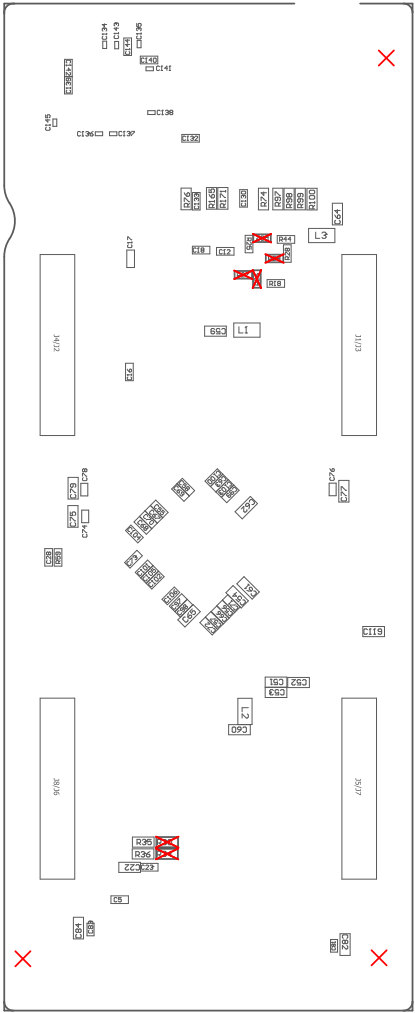


Z21 These assemblies are ESD sensitive, ESD precautions shall be observed.  
Z22 These assemblies must be clean and free from flux and all contaminants. Use of no clean flux is not acceptable.  
Z23 These assemblies must comply with workmanship standards IPC-A-610 Class 2, unless otherwise specified.



COMPONENTS MARKED 'DNP' SHOULD NOT BE POPULATED.  
ASSEMBLY VARIANT: 001

PCB VIEWED FROM TOP SIDE	BOARD #: MCU119	REV: A	SUN REV: Not in version control
M5 Assembly Top	TID #:	N/A	
PLOT NAME = Top Assembly Drawing	GENERATED	: 6/20/2025 5:29:37 PM	TEXAS INSTRUMENTS



COMPONENTS MARKED 'DNP' SHOULD NOT BE POPULATED.  
ASSEMBLY VARIANT: 001

PCB VIEWED FROM BOTTOM SIDE	BOARD #: MCU119	REV: A	SUN REV: Not in version control
	TID #: N/A	mo11oB y1dməzzA ɒM	
PLOT NAME = Bottom Assembly Drawing	GENERATED : 6/20/2025 5:29:37 PM	TEXAS INSTRUMENTS	