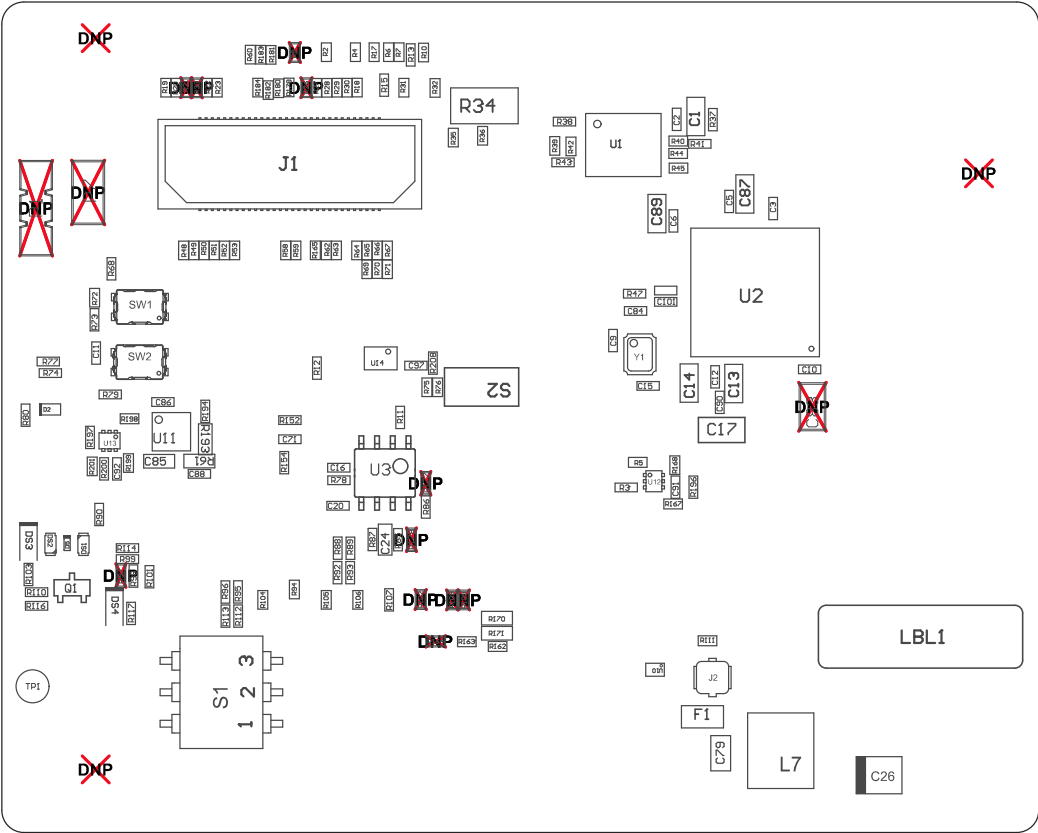
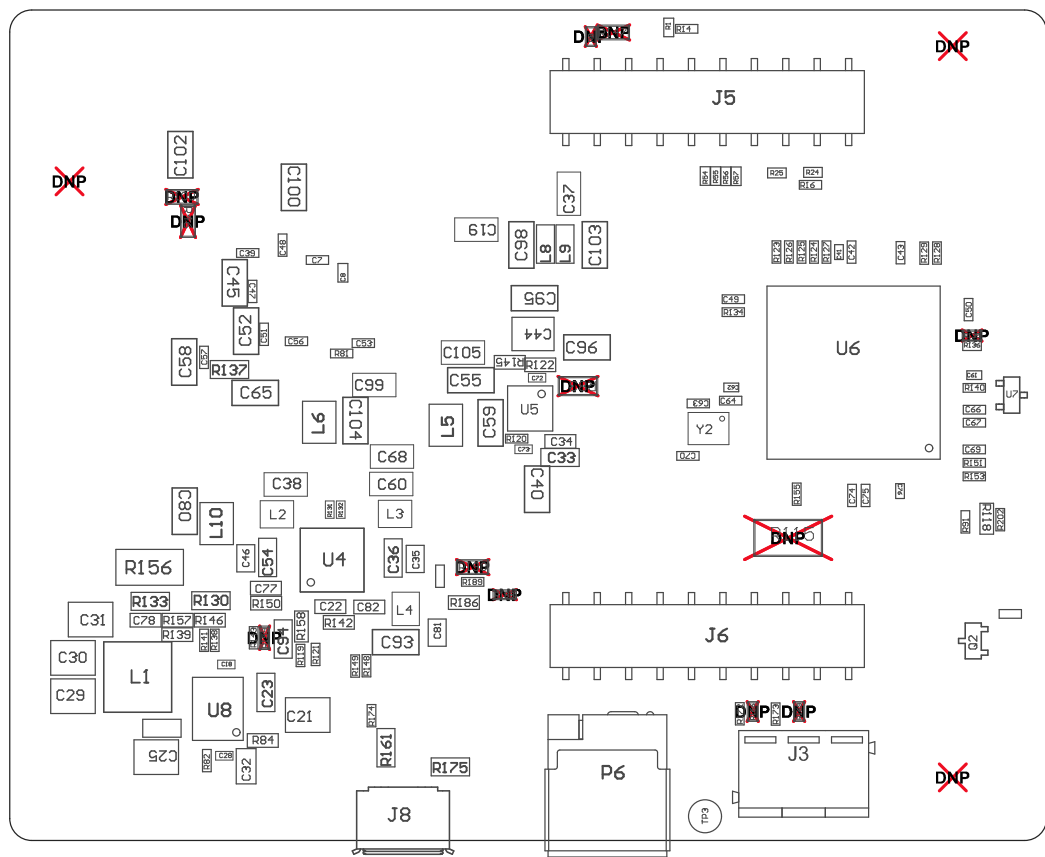


- Z21 ■ Install label in silkscreened box after final wash. Text shall be 8 pt font. Text shall be per the Label Table in the PDF schematic.
- Z22 ■ These assemblies are ESD sensitive, ESD precautions shall be observed.
- Z23 ■ These assemblies must be clean and free from flux and all contaminants. Use of no clean flux is not acceptable.
- Z24 ■ These assemblies must comply with workmanship standards IPC-A-610 Class 2, unless otherwise specified.
- Z25 ■ Micro USB cable, Brackets, Screws, Nuts, Jumpers and Bump on need to be placed in a plastic bag



COMPONENTS MARKED 'DNP' SHOULD NOT BE POPULATED.
ASSEMBLY VARIANT: 002

PCB VIEWED FROM TOP SIDE	BOARD #: PROC051	REV: C	SUN REV: Not In VersionControl
LAYER NAME = M5 Assembly Top	TID #: N/A		
PLOT NAME = Top Assembly Drawing	GENERATED : 3/12/2019	10:59:15 AM	TEXAS INSTRUMENTS



COMPONENTS MARKED 'DNP' SHOULD NOT BE POPULATED.
ASSEMBLY VARIANT: 002

PCB VIEWED FROM BOTTOM SIDE	BOARD #: PROC051	REV: C	SUN REV: Not In VersionControl
LAYER NAME = M6 Assembly Bottom	TID #: N/A		
PLOT NAME = Bottom Assembly Drawing	GENERATED : 3/12/2019 10:59:18 AM	TEXAS INSTRUMENTS	