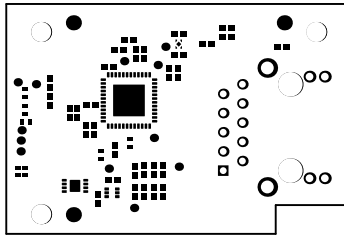
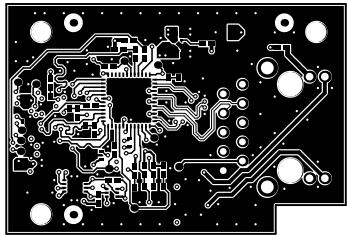


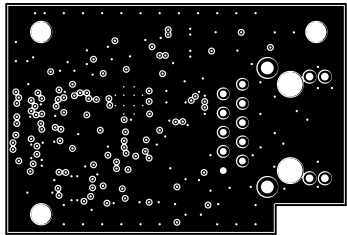
ALL ARTWORK VIEWED FROM TOP SIDE	BOARD #: PROC188	REV: A	SUN REV: ab3fb1f6524b28b1277c5adb9e49cff9936b1d14
LAYER NAME = Top Overlay	TID #: N/A		
PLOT NAME = Top Overlay	GENERATED : 1/23/2025 5:49:16 PM		TEXAS INSTRUMENTS



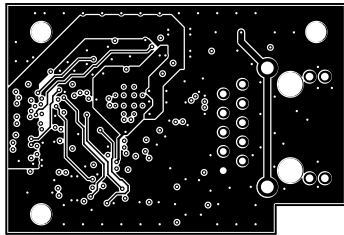
ALL ARTWORK VIEWED FROM TOP SIDE	BOARD #: PROC188	REV: A	SUN REV: ab3fb1f6524b28b1277c5adb9e49cff9936b1d14
LAYER NAME = Top Solder	TID #: N/A		
PLOT NAME = Top Solder Mask	GENERATED : 1/23/2025 5:49:17 PM		TEXAS INSTRUMENTS



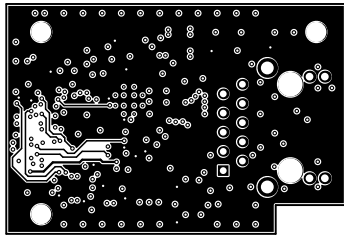
ALL ARTWORK VIEWED FROM TOP SIDE	BOARD #: PROC188	REV: A	SUN REV: ab3fb1f6524b28b1277c5adb9e49cff9936b1d14
LAYER NAME = Top Layer	TID #: N/A		
PLOT NAME = Top Layer	GENERATED : 1/23/2025 5:49:17 PM		TEXAS INSTRUMENTS



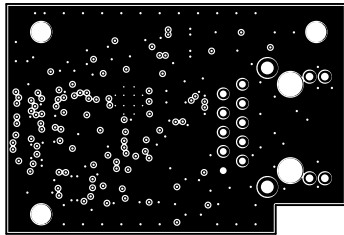
ALL ARTWORK VIEWED FROM TOP SIDE	BOARD #: PROC188	REV: A	SUN REV: ab3fb1f6524b28b1277c5adb9e49cff9936b1d14
LAYER NAME = Layer 2 - GND	TID #: N/A		
PLOT NAME = Signal Layer 1	GENERATED : 1/23/2025 5:49:17 PM		TEXAS INSTRUMENTS



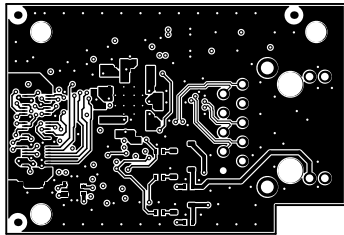
ALL ARTWORK VIEWED FROM TOP SIDE	BOARD #: PROC188	REV: A	SUN REV: ab3fb1f6524b28b1277c5adb9e49cff9936b1d14
LAYER NAME = Layer 3 - Signal/Power	TID #: N/A		
PLOT NAME = Signal Layer 2	GENERATED : 1/23/2025 5:49:17 PM		TEXAS INSTRUMENTS



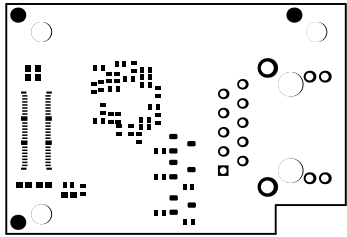
ALL ARTWORK VIEWED FROM TOP SIDE	BOARD #: PROC188	REV: A	SUN REV: ab3fb1f6524b28b1277c5adb9e49cff9936b1d14
LAYER NAME = Layer 4 - VDDIO	TID #: N/A		
PLOT NAME = Signal Layer 3	GENERATED : 1/23/2025 5:49:17 PM		TEXAS INSTRUMENTS



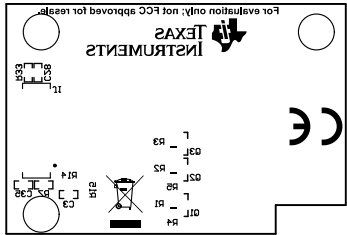
ALL ARTWORK VIEWED FROM TOP SIDE	BOARD #: PROC188	REV: A	SUN REV: ab3fb1f6524b28b1277c5adb9e49cff9936b1d14
LAYER NAME = Layer 5 - GND	TID #: N/A		
PLOT NAME = Signal Layer 4	GENERATED : 1/23/2025 5:49:18 PM		TEXAS INSTRUMENTS



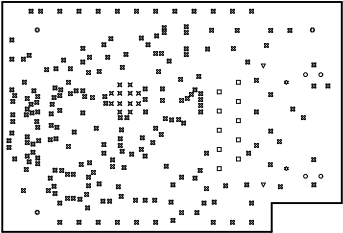
ALL ARTWORK VIEWED FROM TOP SIDE	BOARD #: PROC188	REV: A	SUN REV: ab3fb1f6524b28b1277c5adb9e49cff9936b1d14
LAYER NAME = Bottom Layer	TID #: N/A		
PLOT NAME = Bottom Layer	GENERATED : 1/23/2025 5:49:18 PM		TEXAS INSTRUMENTS



ALL ARTWORK VIEWED FROM TOP SIDE	BOARD #: PROC188	REV: A	SUN REV: ab3fb1f6524b28b1277c5adb9e49cff9936b1d14
LAYER NAME = Bottom Solder	TID #: N/A		
PLOT NAME = Bottom Solder Mask	GENERATED : 1/23/2025 5:49:18 PM		TEXAS INSTRUMENTS

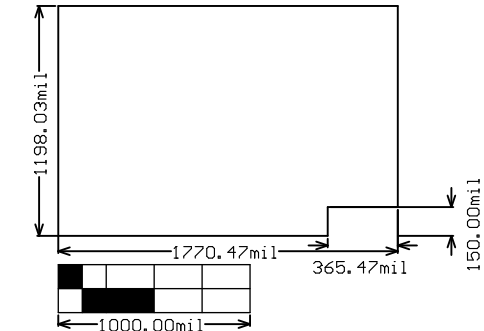


ALL ARTWORK VIEWED FROM TOP SIDE	BOARD #: PROC188	REV: A	SUN REV: ab3fb1f6524b28b1277c5adb9e49cff9936b1d14
LAYER NAME = Bottom Overlay	TID #: N/A		
PLOT NAME = Bottom Overlay	GENERATED : 1/23/2025 5:49:18 PM		TEXAS INSTRUMENTS



Symbol	Count	Hole Size	Plated	Hole Type	Drill Layer Pair	Hole Tolerance
✕	12	7.87mil (0.200mm)	PTH	Round	Top Layer - Bottom Layer	
⊠	212	12.00mil (0.305mm)	PTH	Round	Top Layer - Bottom Layer	
□	10	35.43mil (0.900mm)	PTH	Round	Top Layer - Bottom Layer	
○	4	40.16mil (1.020mm)	PTH	Round	Top Layer - Bottom Layer	
▽	2	66.93mil (1.700mm)	PTH	Round	Top Layer - Bottom Layer	
⊗	3	104.33mil (2.650mm)	NPTH	Round	Top Layer - Bottom Layer	
⊛	2	127.95mil (3.250mm)	NPTH	Round	Top Layer - Bottom Layer	
245 Total						

ALL ARTWORK VIEWED FROM TOP SIDE	BOARD #: PROC188	REV: A	SUN REV: ab3fb1f6524b28b1277c5adb9e49cff9936b1d14
LAYER NAME = Drill Drawing	TID #: N/A		
PLOT NAME = Drill Drawing	GENERATED : 1/23/2025 5:49:18 PM		TEXAS INSTRUMENTS



ALL ARTWORK VIEWED FROM TOP SIDE	BOARD #: PROC188	REV: A	SUN REV: ab3fb1f6524b28b1277c5adb9e49cff9936b1d14
LAYER NAME = M2 Board Dimensions	TID #: N/A		
PLOT NAME = Board Dimensions	GENERATED : 1/23/2025 5:49:20 PM		TEXAS INSTRUMENTS