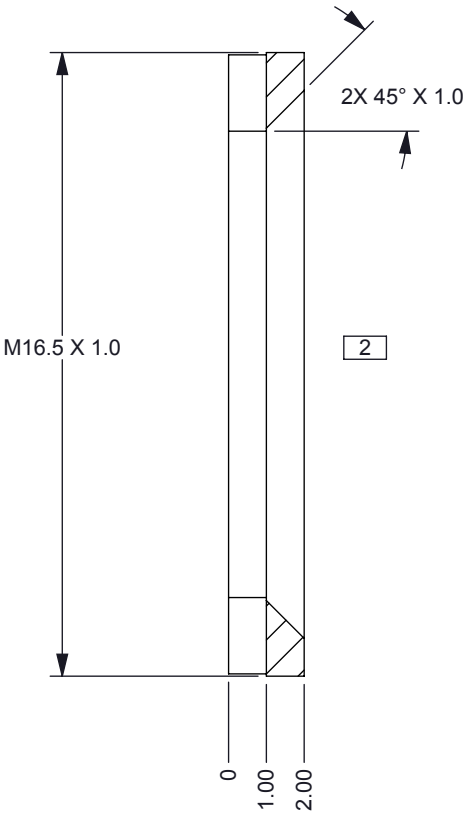
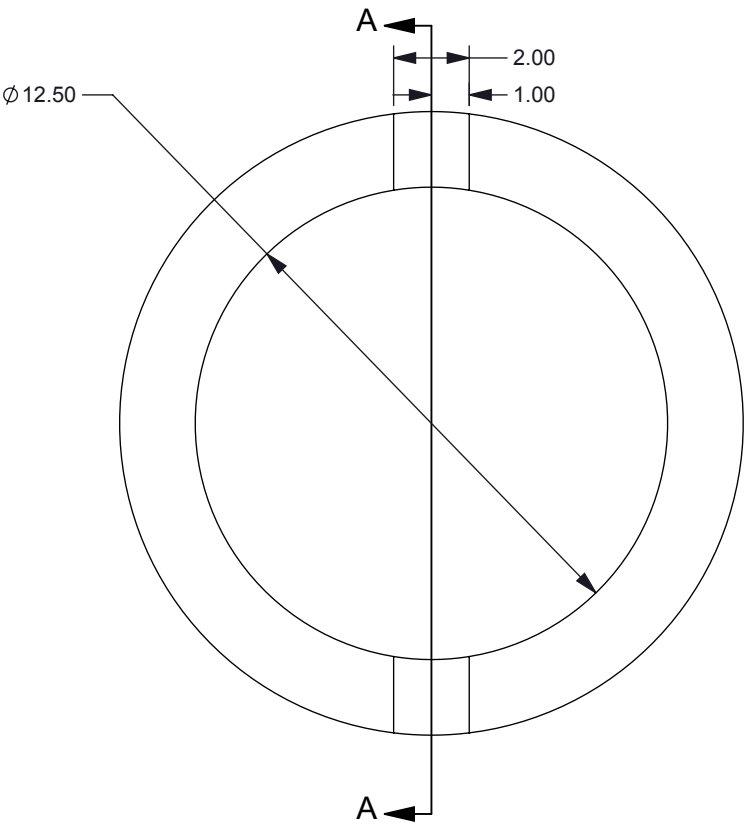
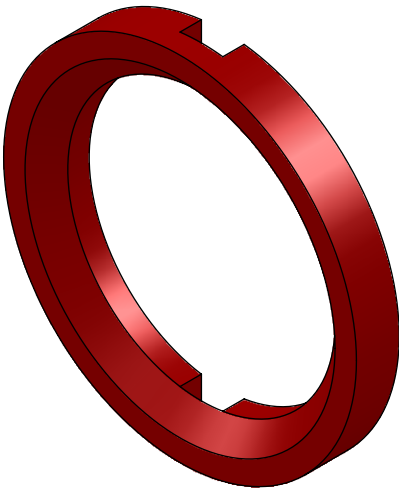


REVISIONS			
REV	DESCRIPTION	DATE	BY
A	ECO #2136196 - INITIAL RELEASE	9/20/13	RDR

- NOTES: UNLESS OTHERWISE SPECIFIED:
- MATERIAL: 6061-T6 ALUMINUM
 - LIGHT BEADBLAST EXTERIOR SURFACES ONLY (MATTE FINISH); MASK INTERNAL FEATURES AND THREADING TO ENSURE TOLERANCES ARE HELD.
 - FINISH: ANOPLATE ANOBLOCK EC PROCESS. ALTERNATE BLACK ANODIZING PROCESSES NOT CONSIDERED AN EQUIVALENT



SECTION A-A



87654321

SW-2010a

		UNLESS OTHERWISE SPECIFIED <ul style="list-style-type: none">DIMENSIONS ARE IN MILLIMETERSTOLERANCES: ANGLES $\pm 1^\circ$ 2 PLACE DECIMALS ± 0.25 1 PLACE DECIMALS ± 0.50DIMENSIONAL LIMITS APPLY BEFORE PROCESSESINTERPRET DIMENSIONS IN ACCORDANCE WITH ASME Y14.5M-1994REMOVE ALL BURRS AND SHARP EDGESPARENTHETICAL INFO FOR REF ONLY	DWN R ROWE	DATE 9/12/2013	<div>TEXAS INSTRUMENTS</div>
			Engr		
			CQE/QA		
			CM		
NEXT ASSY	USED ON		Apprvd	SCALE 5:1	DWG NO 2513389
APPLICATION			SHEET 1 OF 1		

THIRD ANGLE
PROJECTION