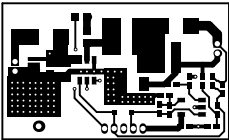
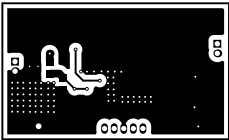


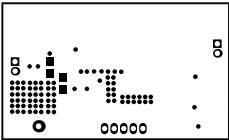
ALL ARTWORK VIEWED FROM TOP SIDE	BOARD #: TIDA-010075	REV: E1	SUN REV: Not In VersionControl
LAYER NAME = Top Solder	TID #: TIDA-010075		
PLOT NAME = Top Solder Mask	GENERATED : 11/7/2019 11:57:53 AM	TEXAS INSTRUMENTS	



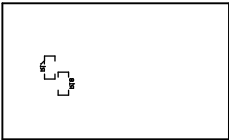
ALL ARTWORK VIEWED FROM TOP SIDE	BOARD #: TIDA-010075	REV: E1	SUN REV: Not In VersionControl
LAYER NAME = Top Layer	TID #: TIDA-010075		
PLOT NAME = Top Layer	GENERATED : 11/7/2019 11:57:55 AM		TEXAS INSTRUMENTS



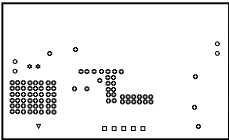
ALL ARTWORK VIEWED FROM TOP SIDE	BOARD #: TIDA-010075	REV: E1	SUN REV: Not In VersionControl
LAYER NAME = Bottom Layer	TID #: TIDA-010075		
PLOT NAME = Bottom Layer	GENERATED : 11/7/2019 11:57:57 AM		TEXAS INSTRUMENTS



ALL ARTWORK VIEWED FROM TOP SIDE	BOARD #: TIDA-010075	REV: E1	SUN REV: Not In VersionControl
LAYER NAME = Bottom Solder	TID #: TIDA-010075		
PLOT NAME = Bottom Solder Mask	GENERATED : 11/7/2019 11:57:59 AM		TEXAS INSTRUMENTS

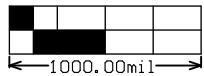
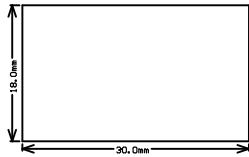


ALL ARTWORK VIEWED FROM TOP SIDE	BOARD #: TIDA-010075	REV: E1	SUN REV: Not In VersionControl
LAYER NAME = Bottom Overlay	TID #: TIDA-010075		
PLOT NAME = Bottom Overlay	GENERATED : 11/7/2019 11:58:00 AM		TEXAS INSTRUMENTS



Symbol	Quantity	Finished Hole Size	Plated	Hole Type	Drill Layer Pair	Hole Tolerance
✱	2	7.87mil (0.200mm)	PTH	Round	Top Layer - Bottom Layer	
⊗	85	10.00mil (0.254mm)	PTH	Round	Top Layer - Bottom Layer	
□	5	27.56mil (0.700mm)	PTH	Round	Top Layer - Bottom Layer	
○	4	28.00mil (0.711mm)	PTH	Round	Top Layer - Bottom Layer	
▽	1	30.00mil (0.762mm)	PTH	Round	Top Layer - Bottom Layer	
97 Total						

ALL ARTWORK VIEWED FROM TOP SIDE	BOARD #: TIDA-010075	REV: E1	SUN REV: Not In VersionControl
LAYER NAME = Drill Drawing	TID #: TIDA-010075		
PLOT NAME = Drill Drawing	GENERATED : 11/7/2019 11:58:02 AM	TEXAS INSTRUMENTS	



ALL ARTWORK VIEWED FROM TOP SIDE	BOARD #:	TIDA-010075	REV:	E1	SUN REV:	Not In VersionControl
LAYER NAME = M2 Board Dimensions	TID #:	TIDA-010075				
PLOT NAME = Board Dimensions	GENERATED	: 11/7/2019	11:58:06 AM	TEXAS INSTRUMENTS		