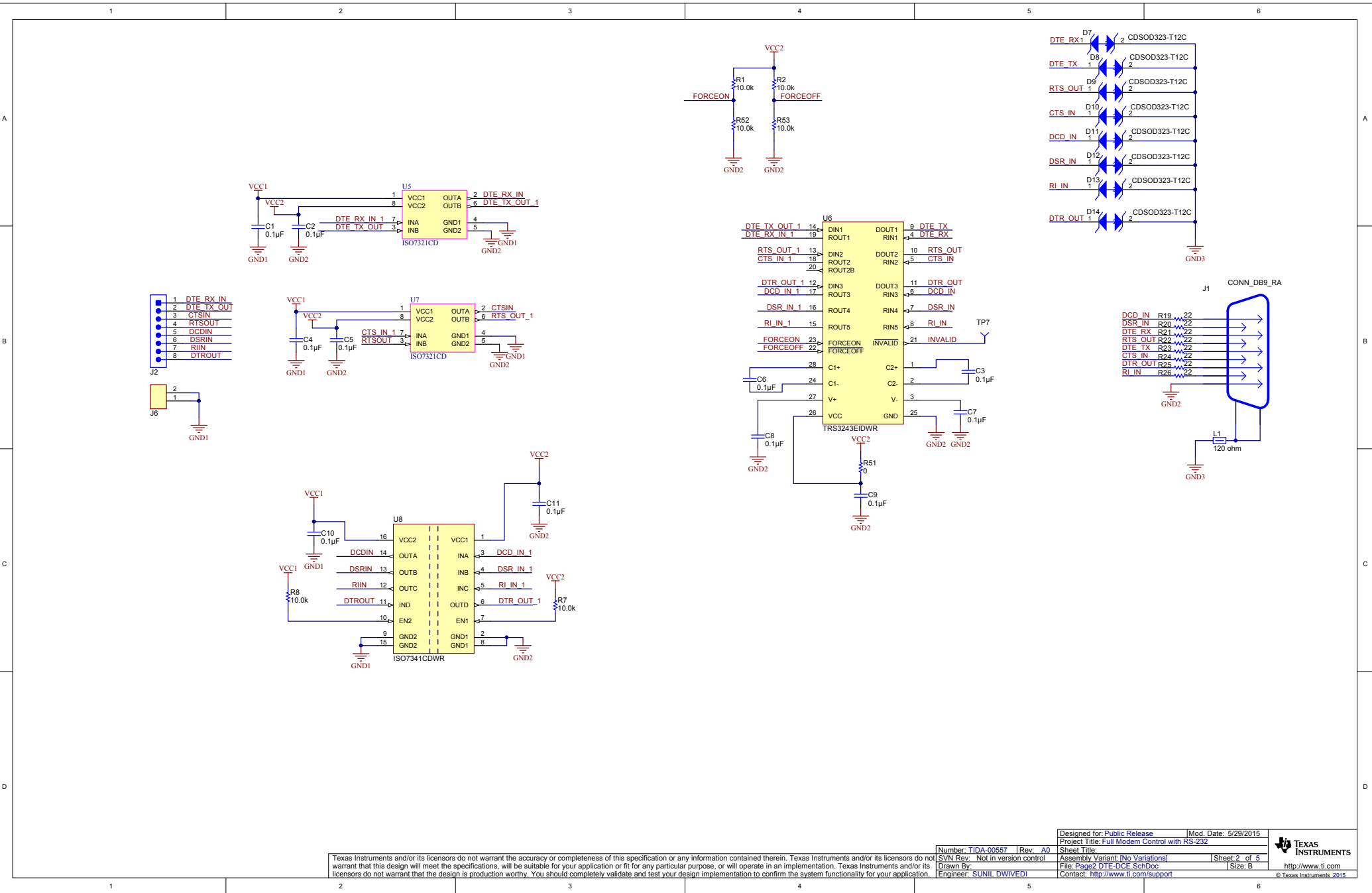
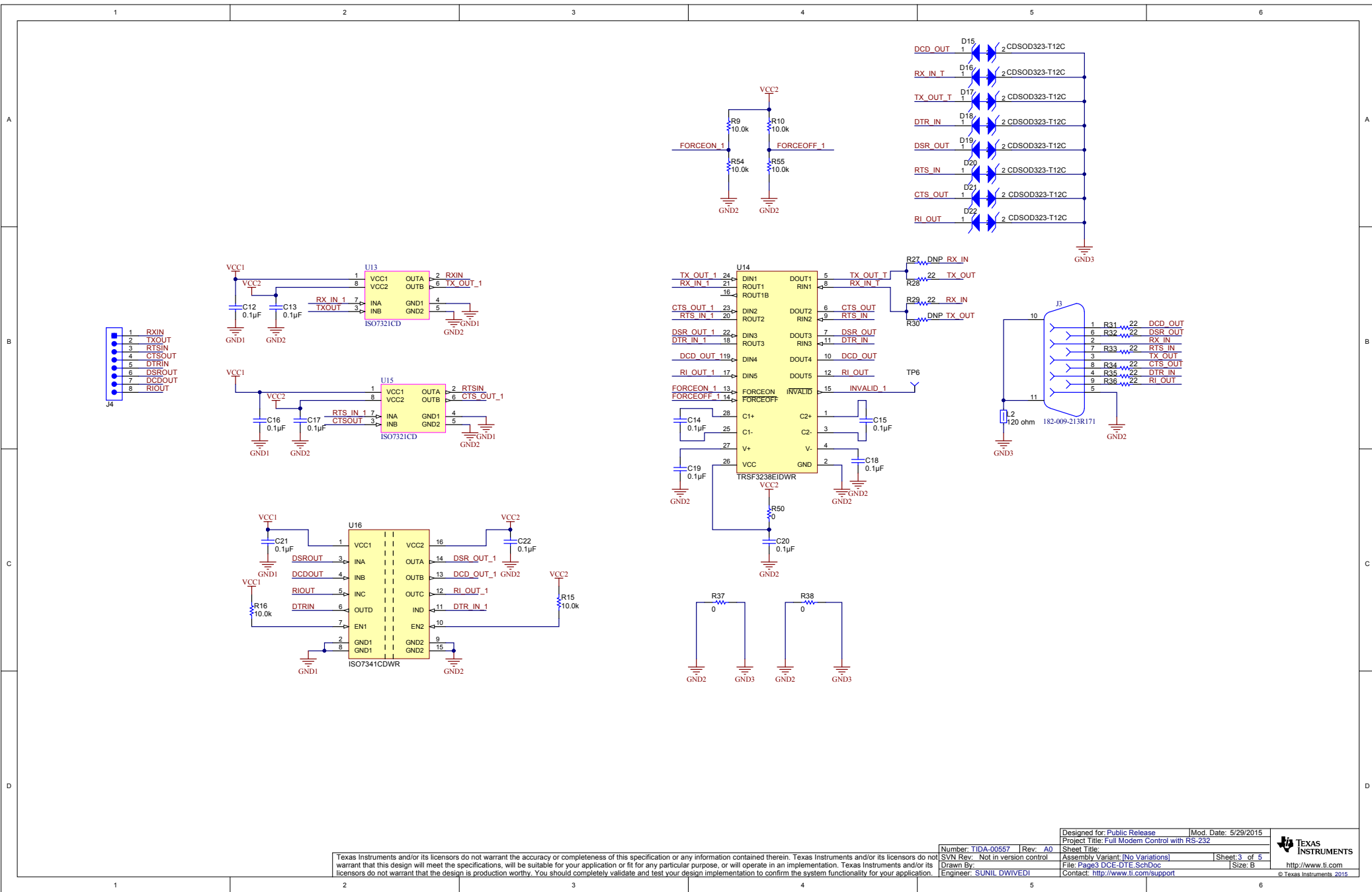
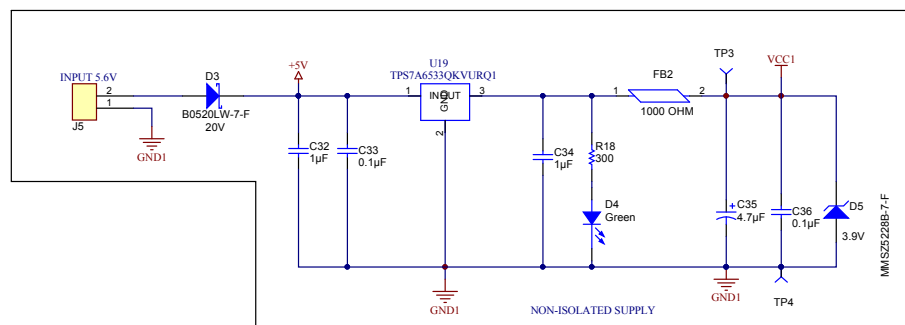
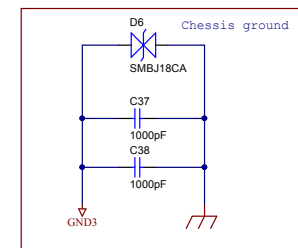
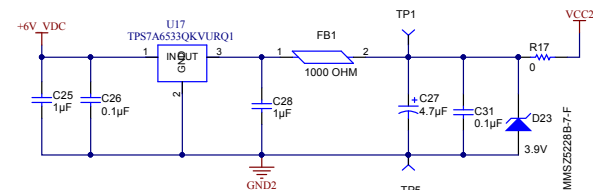
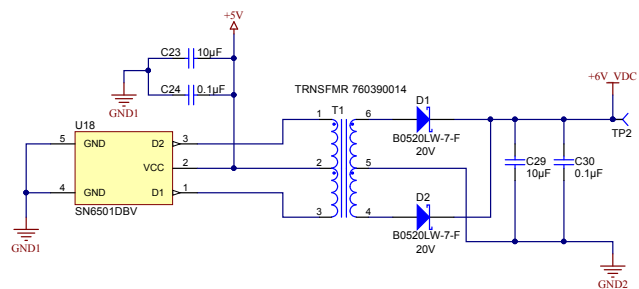


Texas Instruments and/or its licensors do not warrant the accuracy or completeness of this specification or any information contained therein. Texas Instruments and/or its licensors do not warrant that this design will meet the specifications, will be suitable for your application or fit for any particular purpose, or will operate in an implementation. Texas Instruments and/or its licensors do not warrant that the design is production worthy. You should completely validate and test your design implementation to confirm the system functionality for your application.

Number: TIDA-00557	Rev: A0	Designed for: Public Release	Mod. Date: 5/29/2015
SVN Rev: Not in version control		Project Title: Full Modem Control with RS-232	
Drawn By: SUNIL DWIVEDI		Assembly Variant: (No Variations)	Sheet: 1 of 5
Engineer: SUNIL DWIVEDI		File: Page1 Cover Sheet ANSI-B SchDoc	Size: B
		Contact: http://www.ti.com/support	http://www.ti.com







Texas Instruments and/or its licensors do not warrant the accuracy or completeness of this specification or any information contained therein. Texas Instruments and/or its licensors do not warrant that this design will meet the specifications, will be suitable for your application or fit for any particular purpose, or will operate in an implementation. Texas Instruments and/or its licensors do not warrant that the design is production worthy. You should completely validate and test your design implementation to confirm the system functionality for your application.

Number: TIDA-00557	Rev: A0	Designed for: Public Release	Mod. Date: 5/29/2015
SVN Rev: Not in version control	Assembly Variant: [No Variations]	Project Title: Full Modem Control with RS-232	
Drawn By: SUNIL DWIVEDI	File: Page4 Power Supply_SchDoc	Sheet: 4 of 5	
Engineer: SUNIL DWIVEDI	Contact: http://www.ti.com/support	Size: B	

H1 NY PMS 440 0025 PH
H2 NY PMS 440 0025 PH
H3 NY PMS 440 0025 PH
H4 NY PMS 440 0025 PH
H9 NY PMS 440 0025 PH

H5 1902C
H6 1902C
H7 1902C
H8 1902C
H10 1902C

FID1
FID2
FID3

PCB Number: TIDA-00557
PCB Rev: E2

PCB
LOGO
Texas Instruments

A You should delete the nylon screws/standoffs and/or the bump-ons as needed for your design (or substitute other parts from Hardware.IntLib). Bump-ons are cheaper, but provide less clearance.

Deleting anything else from this page may result in your EVM submission being rejected (until you add them back).

Update the Label Text in the Label Table as needed for each Assembly Variant.

You can delete this note too.

Label Table

Variant	Label Text
001	ChangeMe!
002	ChangeMe!

LBL1
PCB Label
Size: 0.65" x 0.20"

ZZ1
Label Assembly Note
This Assembly Note is for PCB labels only

ZZ2
Assembly Note
These assemblies are ESD sensitive, ESD precautions shall be observed.

ZZ3
Assembly Note
These assemblies must be clean and free from flux and all contaminants. Use of no clean flux is not acceptable.

ZZ4
Assembly Note
These assemblies must comply with workmanship standards IPC-A-610 Class 2, unless otherwise specified.

Texas Instruments and/or its licensors do not warrant the accuracy or completeness of this specification or any information contained therein. Texas Instruments and/or its licensors do not warrant that this design will meet the specifications, will be suitable for your application or fit for any particular purpose, or will operate in an implementation. Texas Instruments and/or its licensors do not warrant that the design is production worthy. You should completely validate and test your design implementation to confirm the system functionality for your application.

Designed for: Public Release		Mod. Date: 5/29/2015	
Project Title: Full Modem Control with RS-232			
Number: TIDA-00557		Rev: A0	Sheet Title:
SVN Rev. Not in version control		Assembly Variant: [No Variations]	Sheet: 5 of 5
Drawn By:		File: Page5 Hardware_ANSI-B_SchDoc	Size: B
Engineer: SUNIL DWIVEDI		Contact: http://www.ti.com/support	