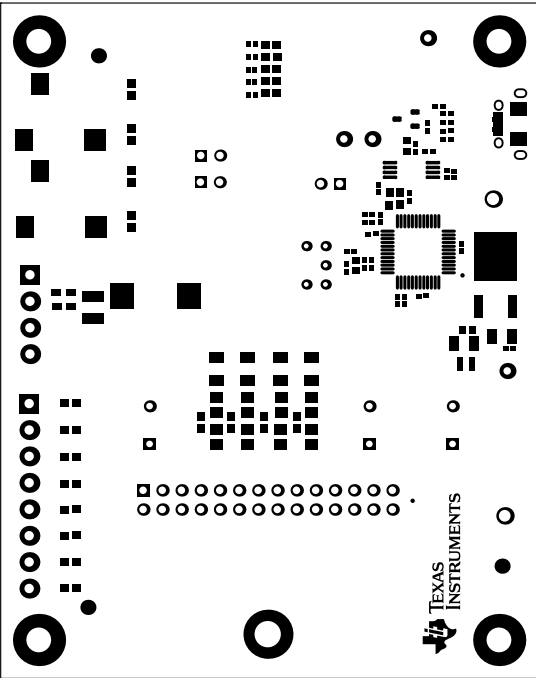
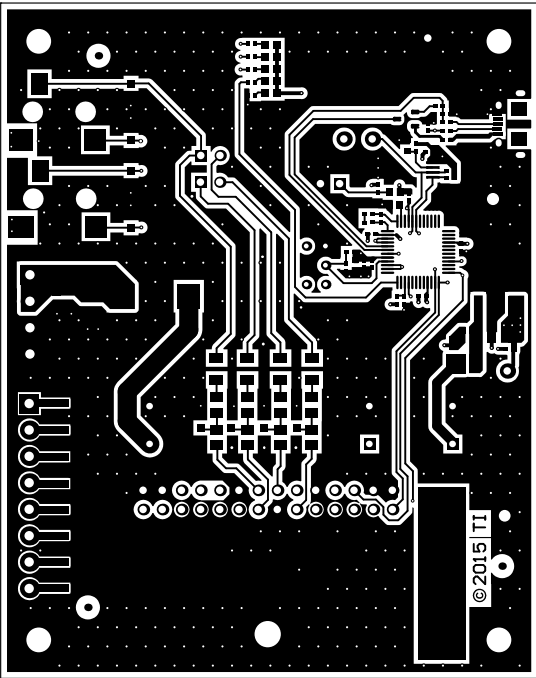


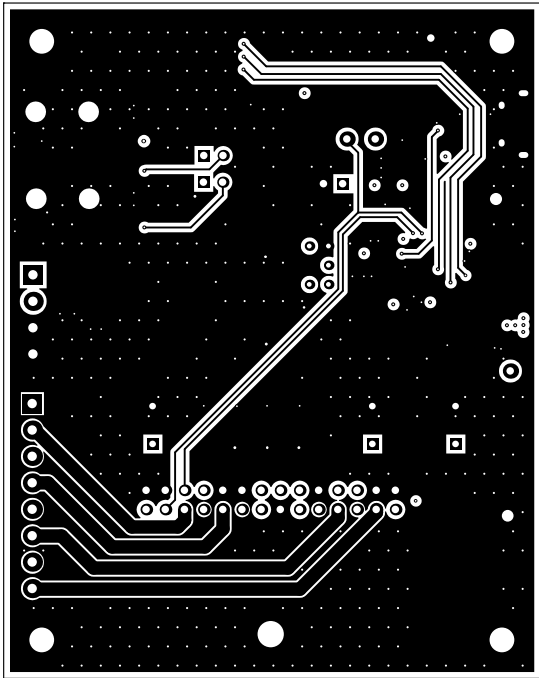
ALL ARTWORK VIEWED FROM TOP SIDE	BOARD #:	TIDA-00573USB REV: E1	SVN REV: Not In VersionControl
LAYER NAME = Top Overlay	TID #:	TIDA-00573USB	
PLOT NAME = Top Overlay	GENERATED	: 7/31/2015 12:59:23 PM	TEXAS INSTRUMENTS



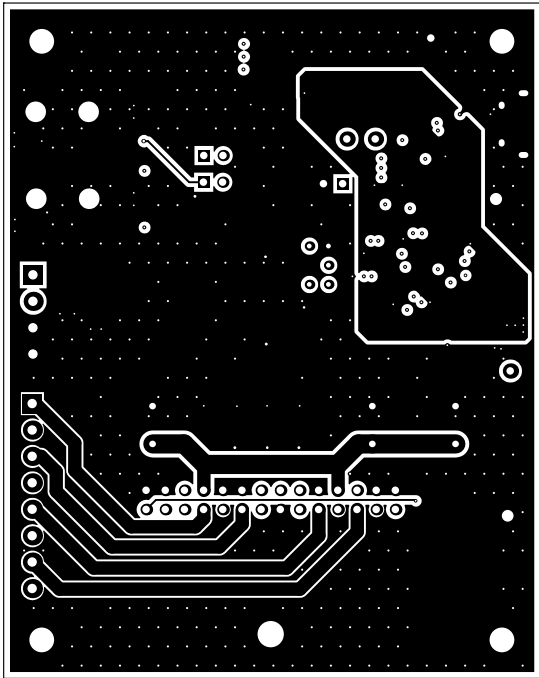
ALL ARTWORK VIEWED FROM TOP SIDE	BOARD #:	TIDA-00573USB	REV: E1	SVN REV: Not In VersionControl
LAYER NAME = Top Solder	TID #:	TIDA-00573USB		
PLOT NAME = Top Solder Mask	GENERATED	: 7/31/2015	12:59:28 PM	TEXAS INSTRUMENTS



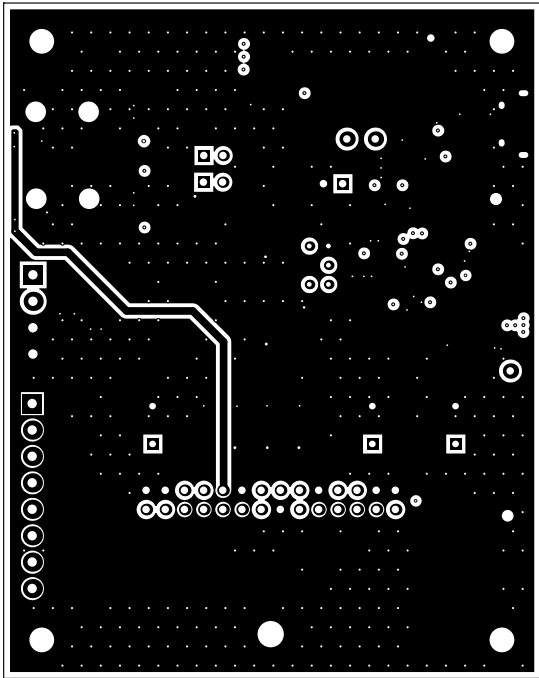
ALL ARTWORK VIEWED FROM TOP SIDE	BOARD #:	TIDA-00573USB	REV:	E1	SVN REV:	Not In VersionControl
LAYER NAME =	Top Layer	TID #:	TIDA-00573USB			
PLOT NAME =	Top Layer	GENERATED	: 7/31/2015	12:59:33 PM	TEXAS INSTRUMENTS	



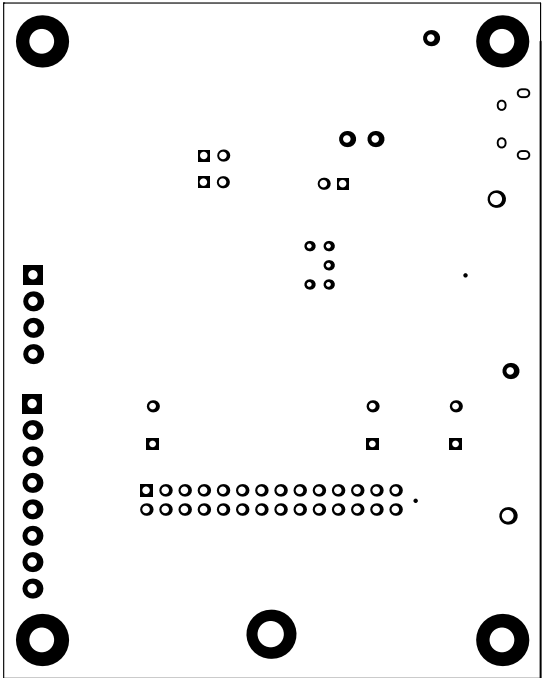
ALL ARTWORK VIEWED FROM TOP SIDE	BOARD #:	TIDA-00573USB	REV:	E1	SVN REV:	Not In VersionControl
LAYER NAME =	TID #:	TIDA-00573USB				
PLOT NAME =	Signal Layer 1	GENERATED	:	7/31/2015	12:59:38 PM	TEXAS INSTRUMENTS



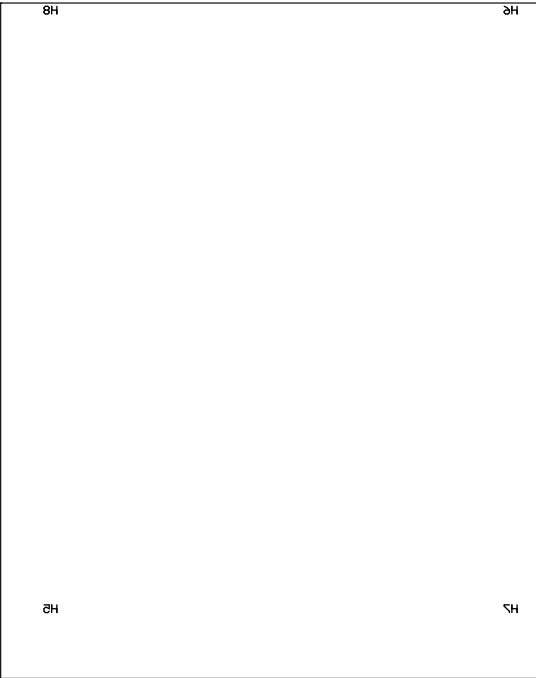
ALL ARTWORK VIEWED FROM TOP SIDE	BOARD #:	TIDA-00573USB	REV:	E1	SVN REV:	Not In VersionControl
LAYER NAME =	TID #:	TIDA-00573USB				
PLOT NAME =	Signal Layer 2	GENERATED	:	7/31/2015	12:59:44 PM	TEXAS INSTRUMENTS



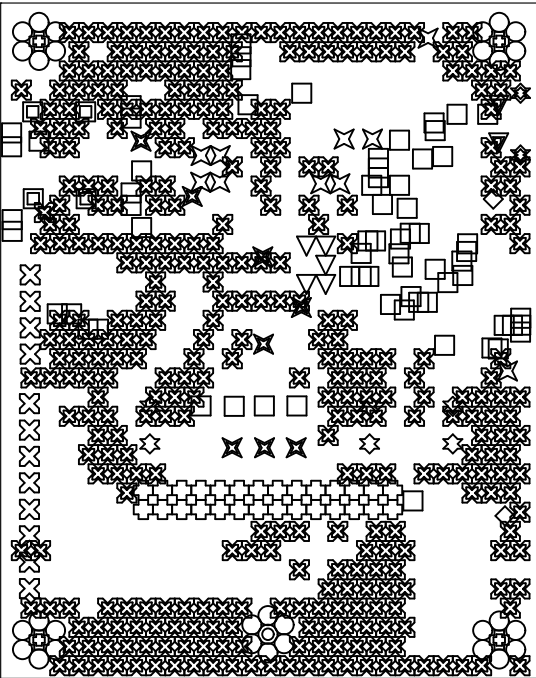
ALL ARTWORK VIEWED FROM TOP SIDE	BOARD #: TIDA-00573USB	REV: E1	SVN REV: Not In VersionControl
LAYER NAME = Bottom Layer	TID #: TIDA-00573USB		
PLOT NAME = Bottom Layer	GENERATED : 7/31/2015	12:59:49 PM	TEXAS INSTRUMENTS



ALL ARTWORK VIEWED FROM TOP SIDE	BOARD #:	TIDA-00573USB	REV: E1	SVN REV: Not In VersionControl
LAYER NAME = Bottom Solder	TID #:	TIDA-00573USB		
PLOT NAME = Bottom Solder Mask	GENERATED	: 7/31/2015	12:59:54 PM	TEXAS INSTRUMENTS

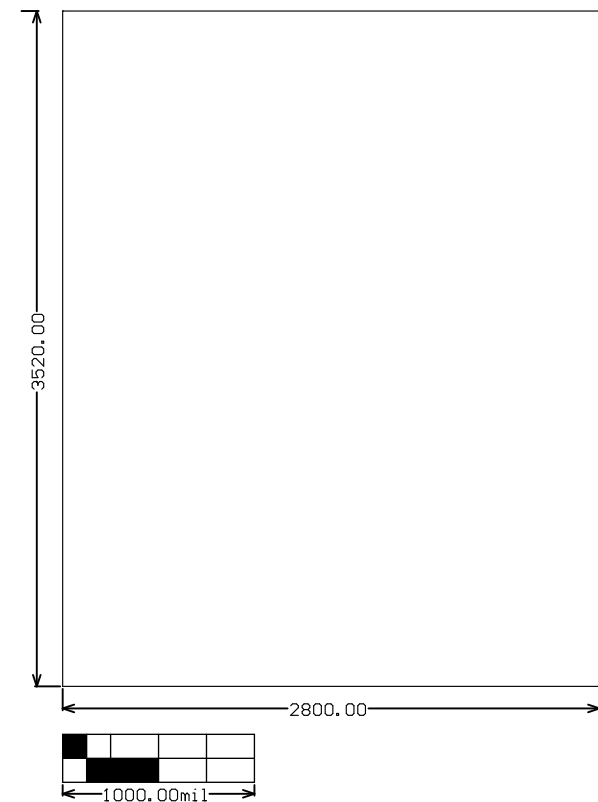


ALL ARTWORK VIEWED FROM TOP SIDE	BOARD #: TIDA-00573USB	REV: E1	SUN REV: Not In VersionControl
LAYER NAME = Bottom Overlay	TID #: TIDA-00573USB		
PLOT NAME = Bottom Overlay	GENERATED : 7/31/2015 12:59:59 PM		TEXAS INSTRUMENTS



Symbol	Quantity	Finished Hole Size	Plated	Hole Type
■	4	66.93mil (1.700mm)	NPTH	Round
□	69	10.00mil (0.254mm)	PTH	Round
⊠	356	12.00mil (0.305mm)	PTH	Round
✕	8	15.00mil (0.381mm)	PTH	Round
○	30	19.69mil (0.500mm)	PTH	Round
▽	5	26.00mil (0.660mm)	PTH	Round
☆	6	35.43mil (0.900mm)	PTH	Round
⊗	10	40.00mil (1.016mm)	PTH	Round
⊕	28	40.16mil (1.020mm)	PTH	Round
⊠	12	50.00mil (1.270mm)	PTH	Round
◇	2	63.00mil (1.600mm)	PTH	Round
⊗	4	129.92mil (3.300mm)	PTH	Round
⊙	1	137.80mil (3.500mm)	PTH	Round
▽	2	31.50mil (0.800mm)	PTH	Slot
☆	2	31.50mil (0.800mm)	PTH	Slot
	539 Total			

ALL ARTWORK VIEWED FROM TOP SIDE	BOARD #: TIDA-00573USB	REV: E1	SUN REV: Not In VersionControl
LAYER NAME = Drill Drawing	TID #: TIDA-00573USB		
PLOT NAME = Drill Drawing	GENERATED : 7/31/2015	1:00:04 PM	TEXAS INSTRUMENTS



ALL ARTWORK VIEWED FROM TOP SIDE	BOARD #:	TIDA-00573USB	REV:	E1	SVN REV:	Not In VersionControl
LAYER NAME = M2 Board Dimensions	TID #:	TIDA-00573USB				
PLOT NAME = Board Dimensions	GENERATED	: 7/31/2015	1:00:09 PM	TEXAS INSTRUMENTS		