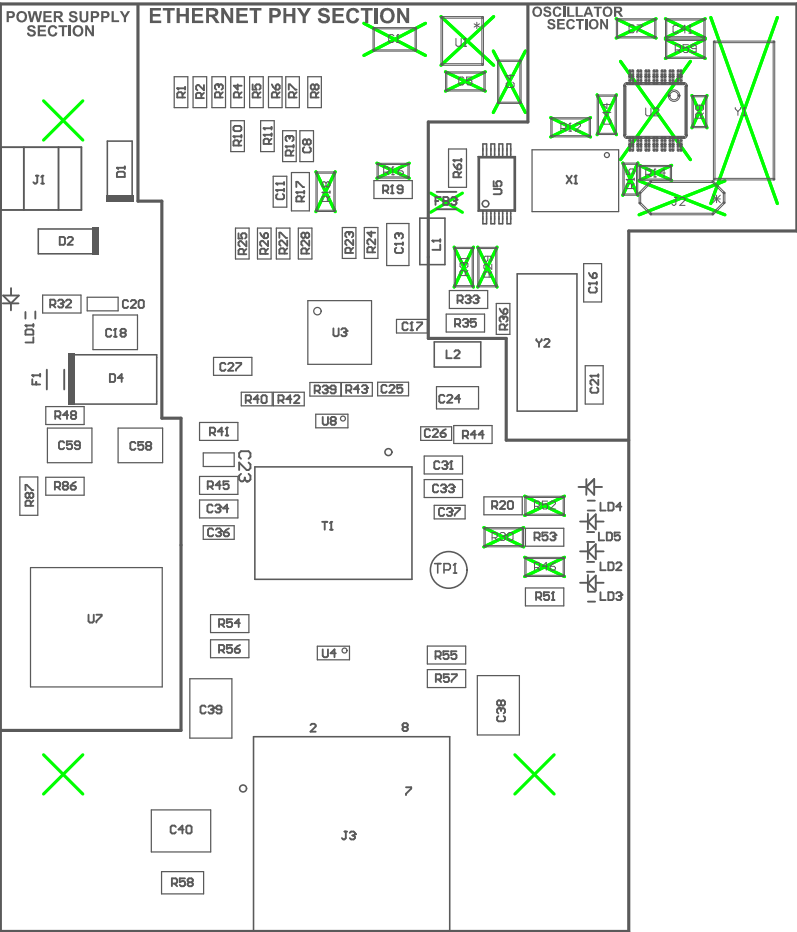
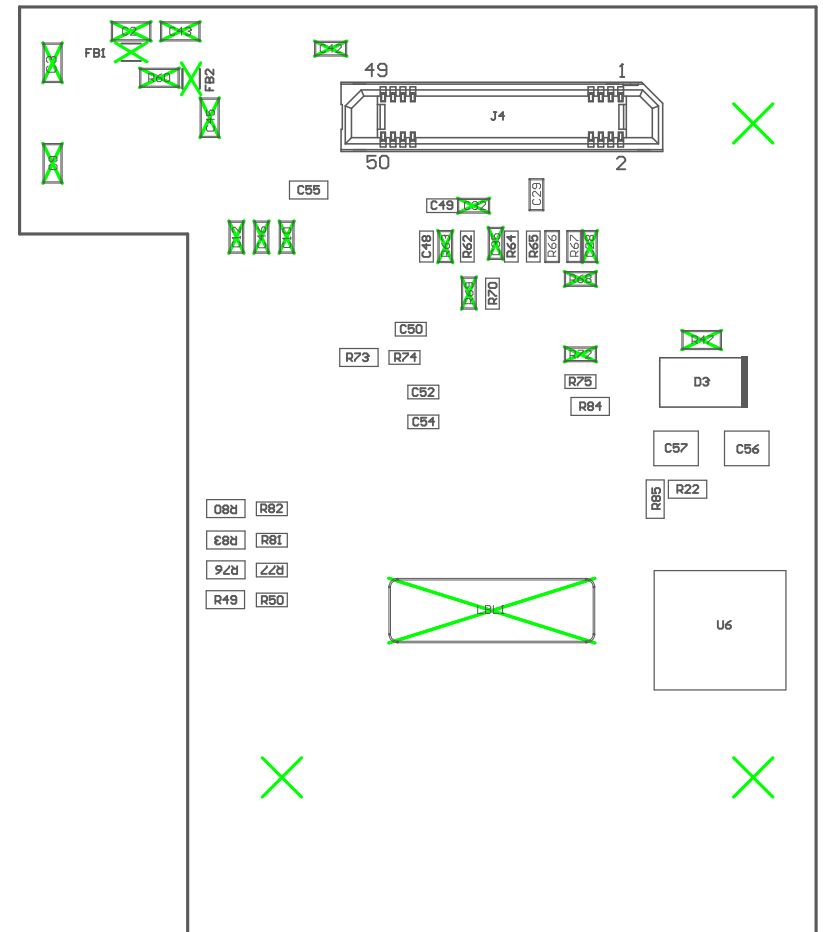


- Z21 ■Install label in silkscreened box after final wash. Text shall be 8 pt font. Text shall be per the Label Table in the PDF schematic.
- Z22 ■These assemblies are ESD sensitive, ESD precautions shall be observed.
- Z23 ■These assemblies must be clean and free from flux and all contaminants. Use of no clean flux is not acceptable.
- Z24 ■These assemblies must comply with workmanship standards IPC-A-610 Class 2, unless otherwise specified.





COMPONENTS MARKED 'DNP' SHOULD NOT BE POPULATED.
 ASSEMBLY VARIANT: 001

PCB VIEWED FROM BOTTOM SIDE	BOARD #:TIDA-00928E1_CU	REV: E2	SVN REV: Not In VersionControl
M6 Assembly Bottom	TID#:TIDA-00928E1_CU		
PLOT NAME = Bottom Assembly Drawing	GENERATED : 1/24/2018 3:50:59 PM	TEXAS INSTRUMENTS	