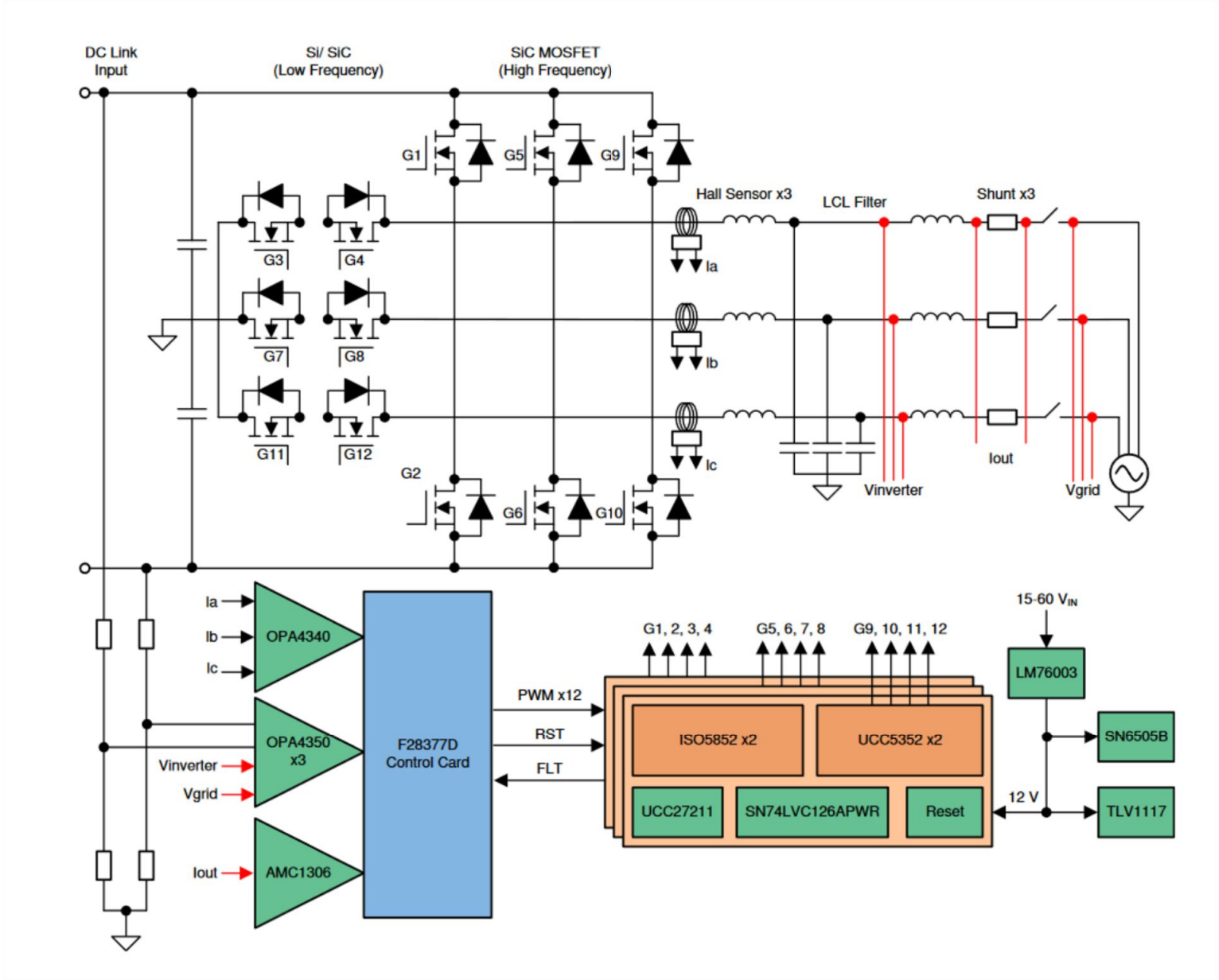
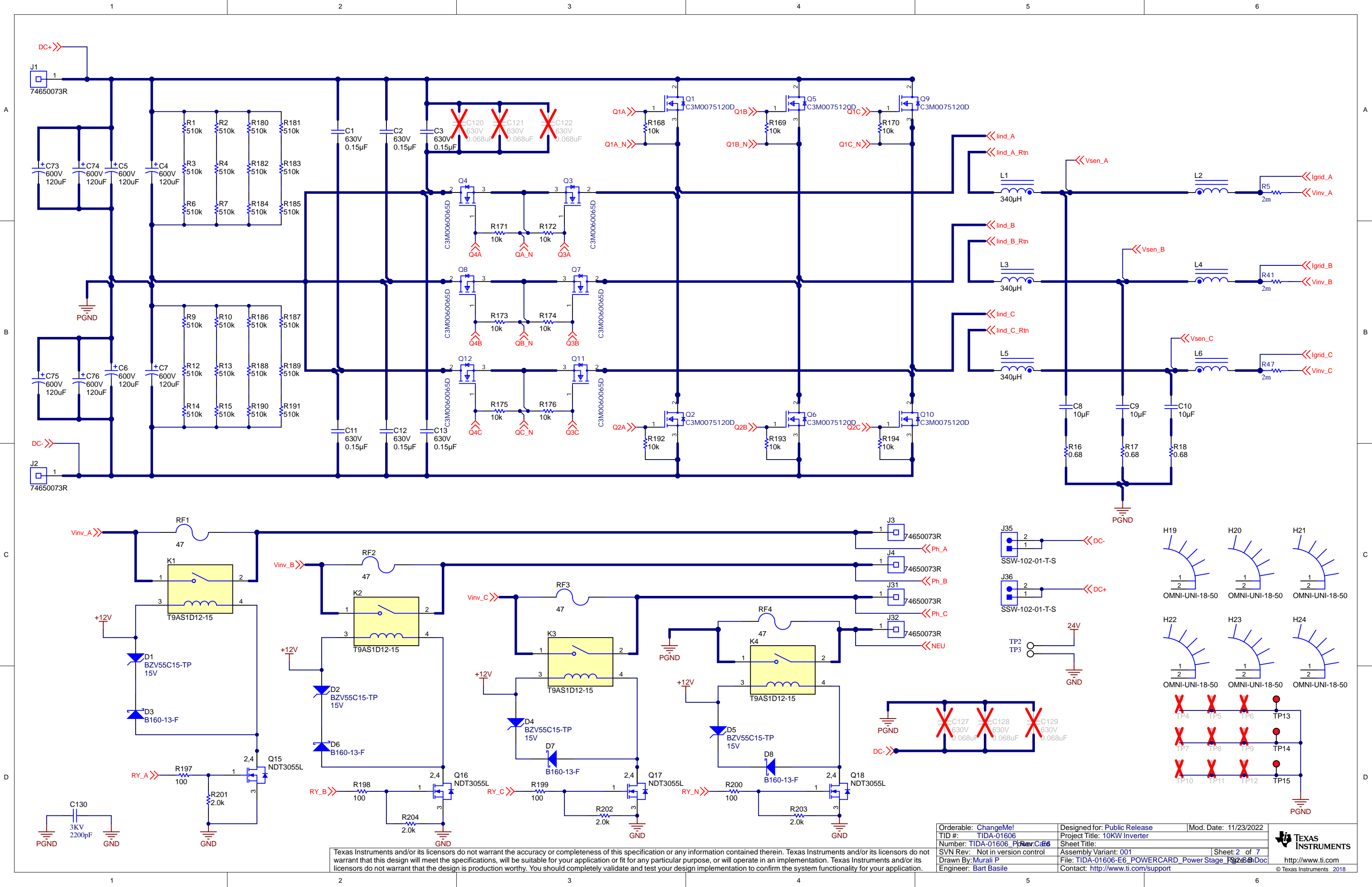


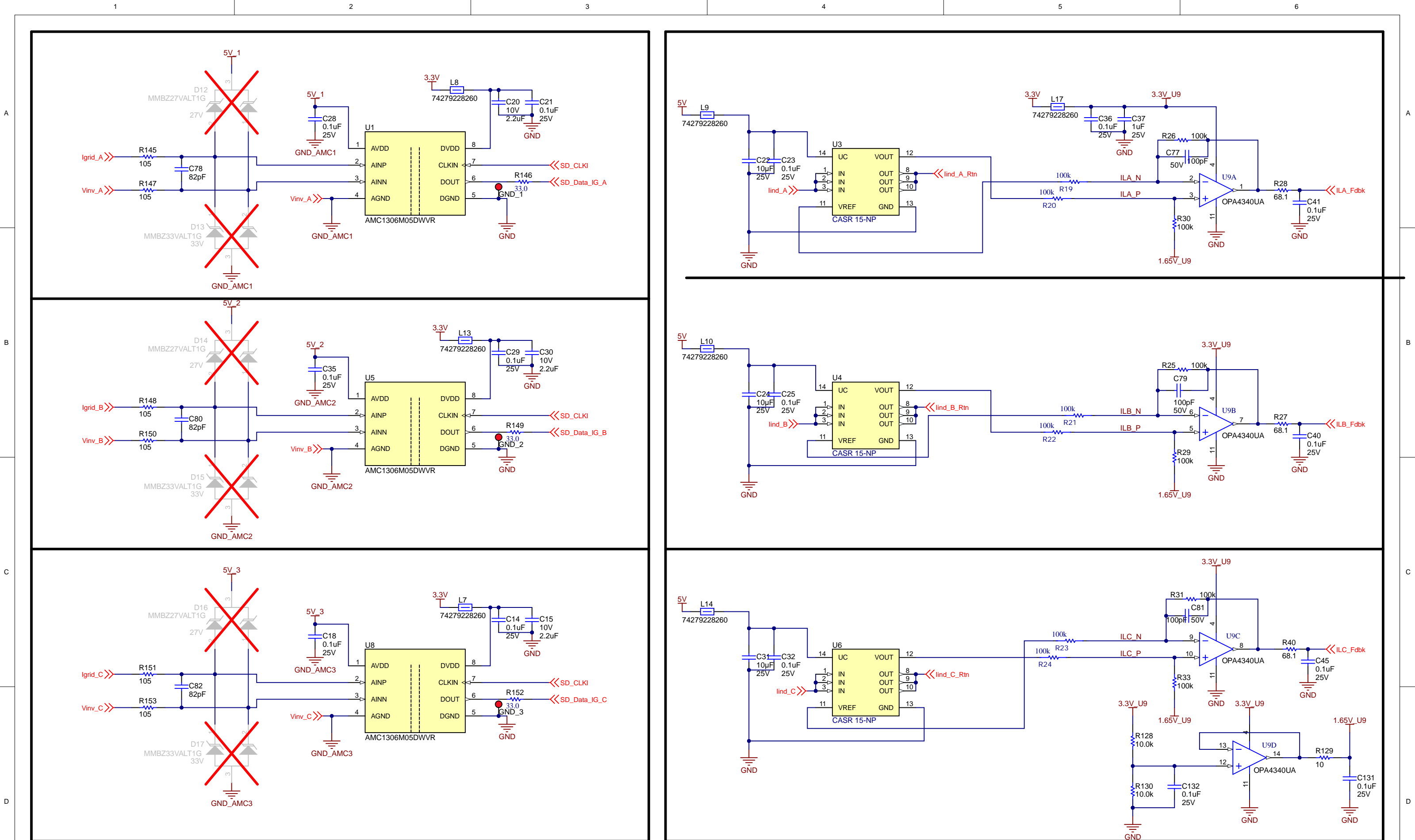
Revision History				
Rev	ECN #	Approved Date	Approved by	Notes
N/A	N/A	N/A	N/A	N/A





Texas Instruments and/or its licensors do not warrant the accuracy or completeness of this specification or any information contained therein. Texas Instruments and/or its licensors do not warrant that this design will meet the specifications, will be suitable for your application or fit for any particular purpose, or will operate in an implementation. Texas Instruments and/or its licensors do not warrant that the design is production worthy. You should completely validate and test your design implementation to confirm the system functionality for your application.

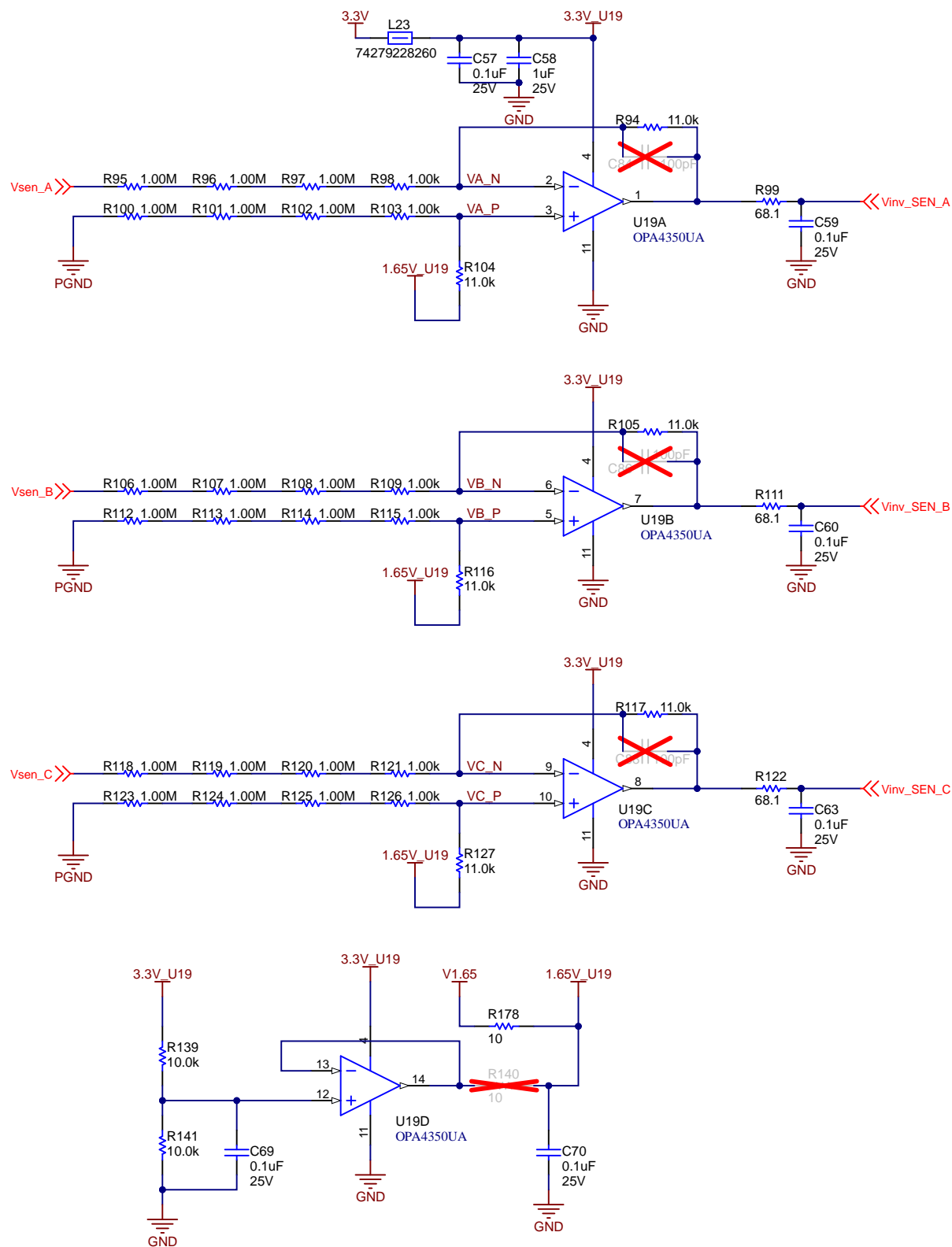
Orderable: ChangeMe!	Designed for: Public Release	Mod. Date: 11/23/2022
TID #: TIDA-01606	Project Title: 10KW Inverter	
Number: TIDA-01606_PwrCard6	Sheet Title:	
SVN Rev: Not in version control	Assembly Variant: 001	Sheet: 2 of 7
Drawn By: Murali P	File: TIDA-01606-E6_POWERCARD Power Stage PowerCard6	
Engineer: Bart Basile	Contact: http://www.ti.com/support	



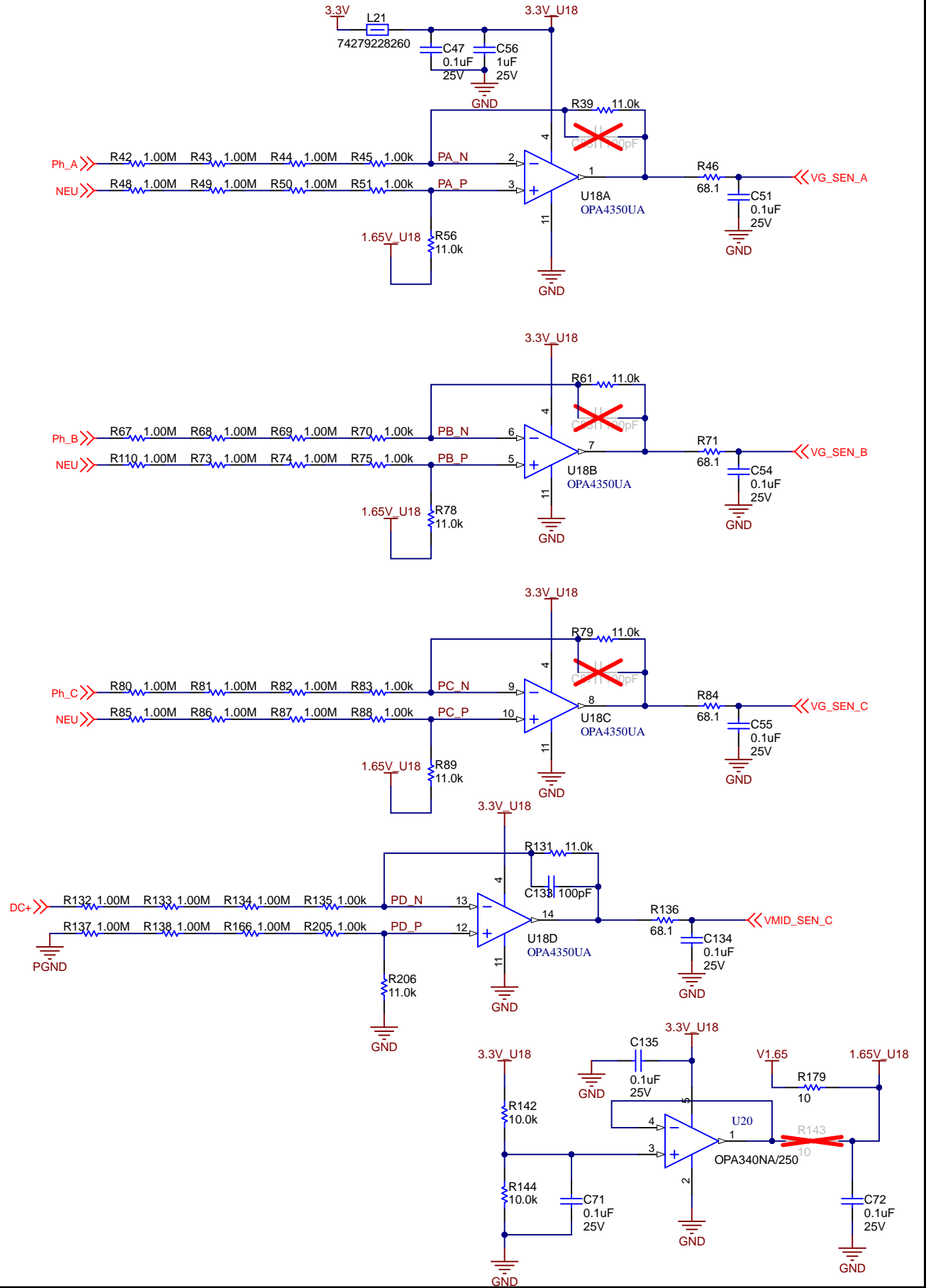
Texas Instruments and/or its licensors do not warrant the accuracy or completeness of this specification or any information contained therein. Texas Instruments and/or its licensors do not warrant that this design will meet the specifications, will be suitable for your application or fit for any particular purpose, or will operate in an implementation. Texas Instruments and/or its licensors do not warrant that the design is production worthy. You should completely validate and test your design implementation to confirm the system functionality for your application.

Orderable: ChangeMe!	Designed for: Public Release	Mod. Date: 11/23/2022
TID #: TIDA-01606	Project Title: 10KW Inverter	
Number: TIDA-01606_PwrCard	Sheet Title: Inductor Current Sensing Interface Circuit	
SVN Rev: Not in version control	Assembly Variant: 001	Sheet: 3 of 7
Drawn By: Murali P	File: TIDA-01606-E6_POWERCARD_Current Sensing SchDoc	http://www.ti.com
Engineer: Bart Basile	Contact: http://www.ti.com/support	

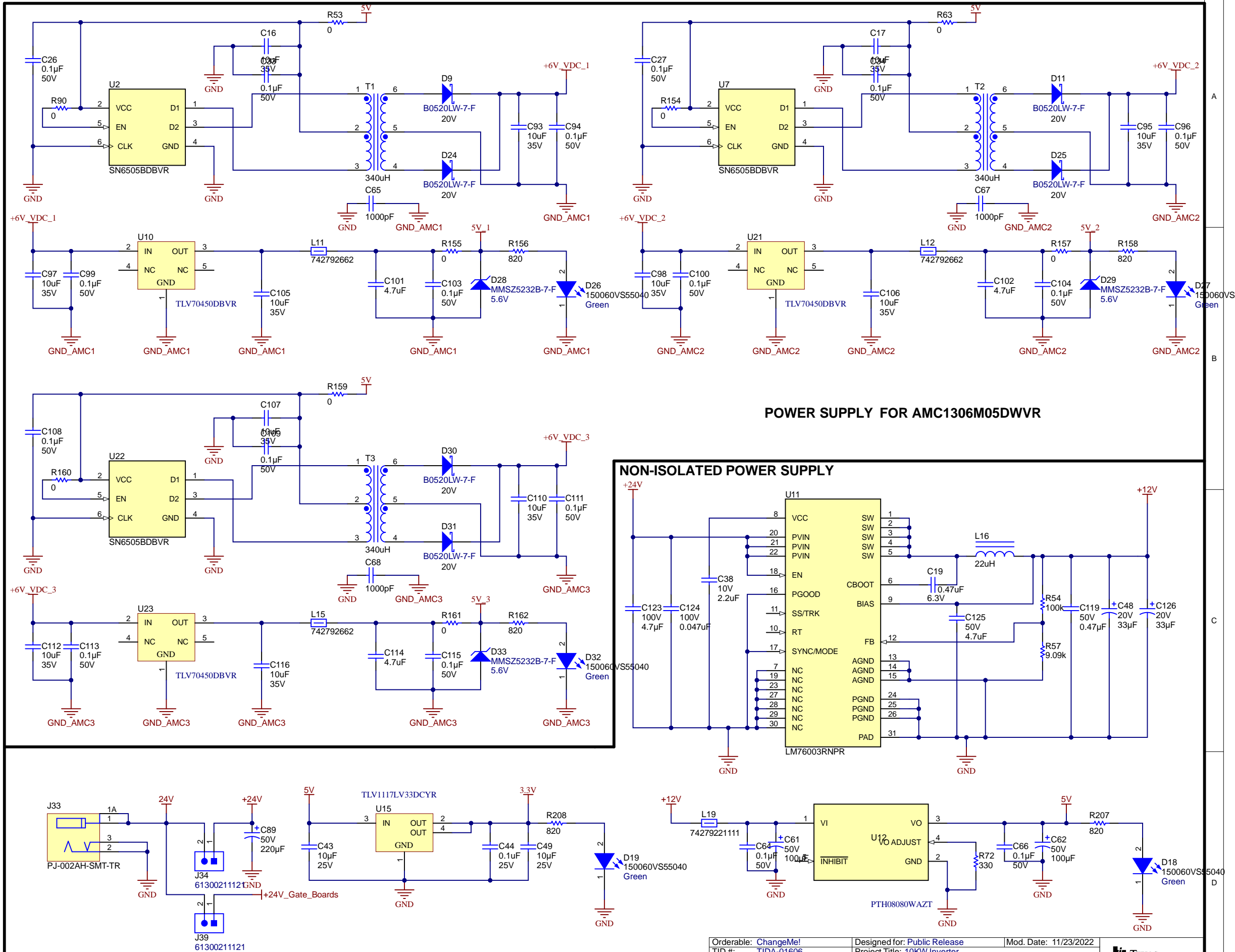
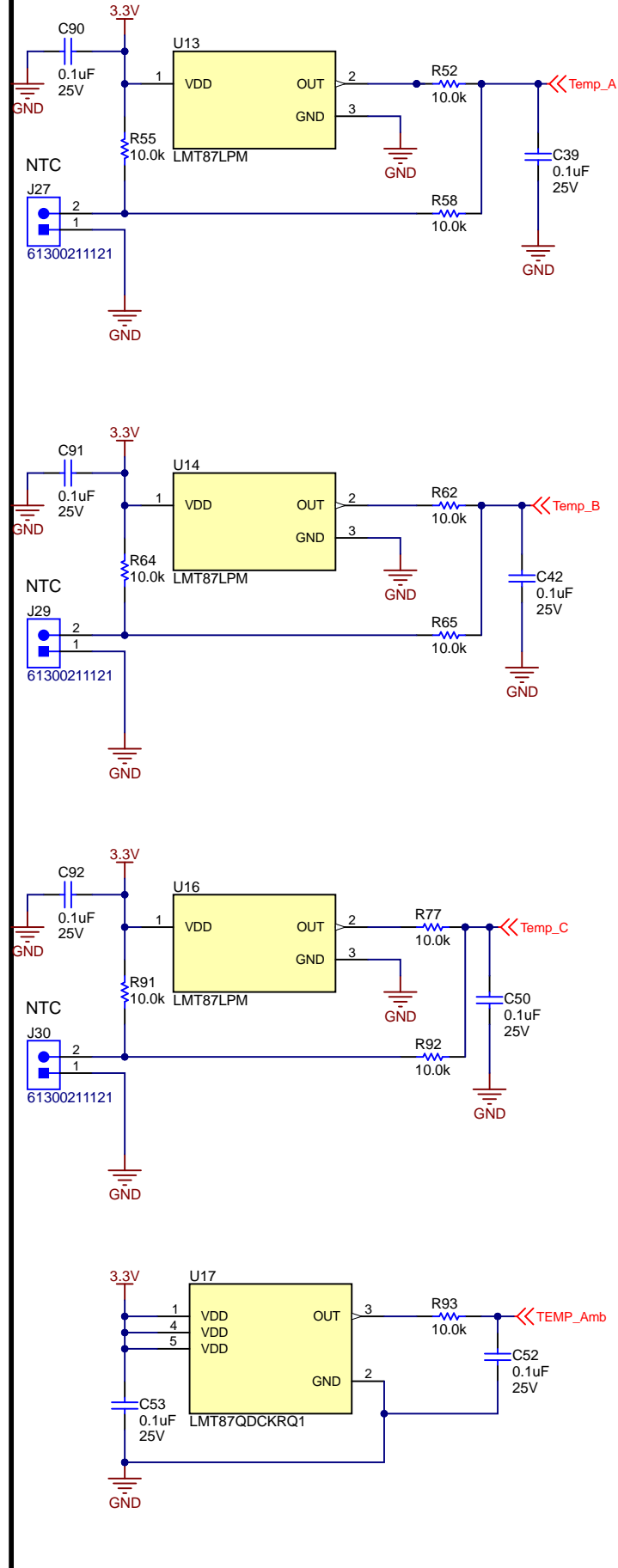
INVERTER OUTPUT VOLTAGE SENSING



GRID VOLTAGE SENSING

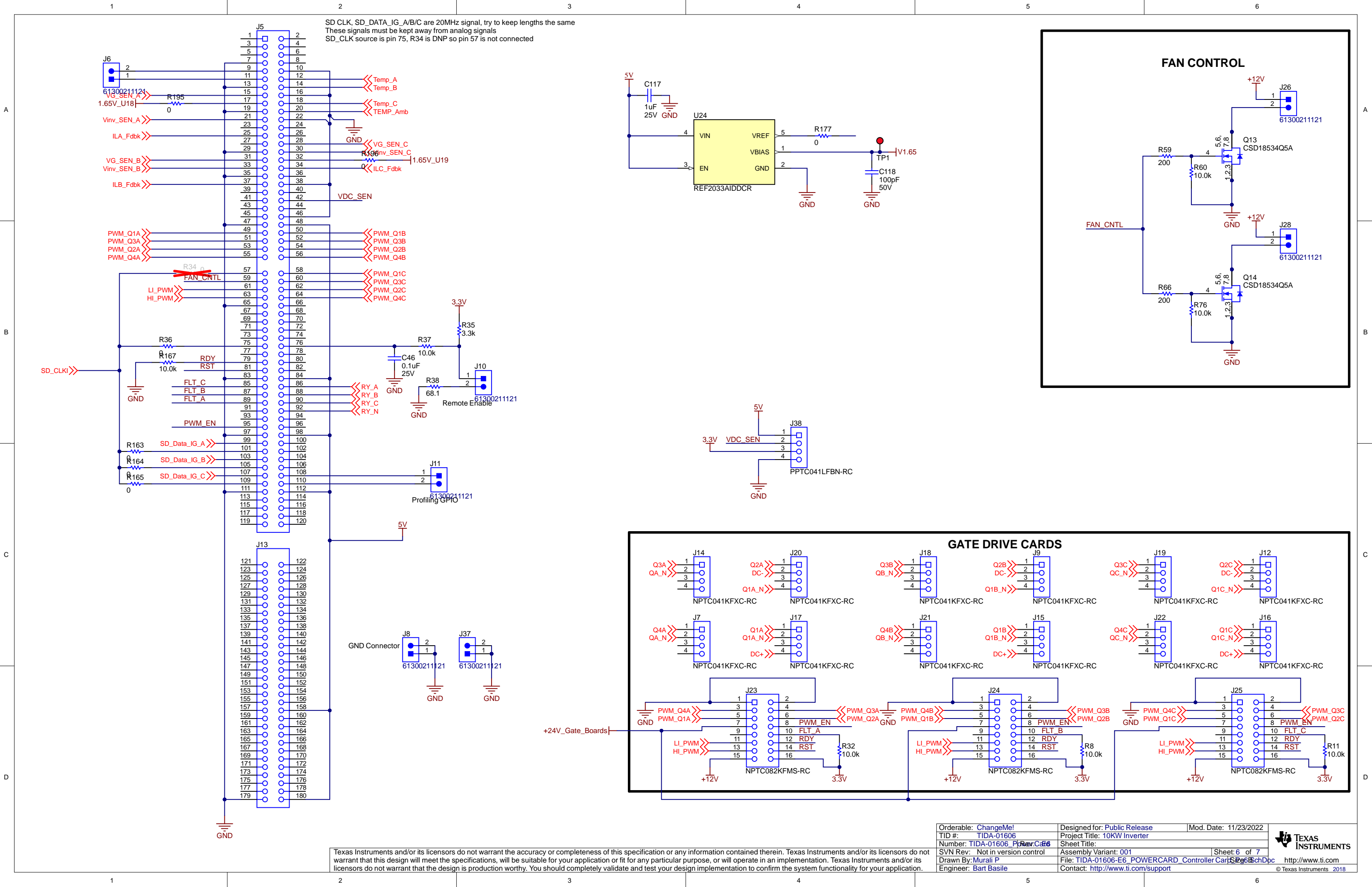


TEMP SENSING



Orderable: ChangeMe!	Designed for: Public Release	Mod. Date: 11/23/2022
TID #: TIDA-01606	Project Title: 10KW Inverter	
Number: TIDA-01606 Power Card	Sheet Title:	
SVN Rev: Not in version control	Assembly Variant: 001	Sheet: 5 of 7
Drawn By: Murali P	File: TIDA-01606-E6_POWERCARD_Power Supply Section	Part Number: PTH08080WAZT
Engineer: Bart Basile	Contact: http://www.ti.com/support	© Texas Instruments 2018

Texas Instruments and/or its licensors do not warrant the accuracy or completeness of this specification or any information contained therein. Texas Instruments and/or its licensors do not warrant that this design will meet the specifications, will be suitable for your application or fit for any particular purpose, or will operate in an implementation. Texas Instruments and/or its licensors do not warrant that the design is production worthy. You should completely validate and test your design implementation to confirm the system functionality for your application.



SD_CLK, SD_DATA_IG_A/B/C are 20MHz signal, try to keep lengths the same
These signals must be kept away from analog signals
SD_CLK source is pin 75, R34 is DNP so pin 57 is not connected

