

# TI Designs: TIDA-01636 電源レール・ノイズ・アナライザのリファレンス・デザイン



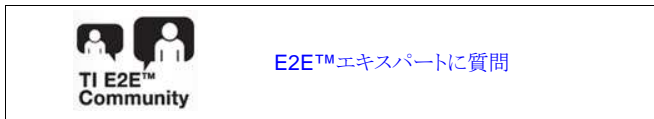
## 概要

このリファレンス・デザインは、C2000™マイクロコントローラ (MCU)内のA/Dコンバータ(ADC)に接続された、アクティブ・パスバンド・フィルタです。このシステムは、電源レールで対象の帯域幅内に存在するリップルとノイズを検出します。高速フーリエ変換(FFT)アルゴリズムにより信号の高調波成分を分析し、スイッチング周波数を検出できます。この分析により、大電力アプリケーションで適合型リアルタイム・スイッチング周波数ディザリングが可能になり、よりの確な電磁気適合性干渉(EMI)制御が行えるようになります。また、帰還なしのポジショナーのリップル・カウンタが設計に役立ちます。

C2000™マイクロコントローラのデジタル信号処理(DSP)機能は、システム内で重要な役割を果たし、デジタル電源(オンボード充電器、DC-DCコンバータ)やモータ制御(トラクション・インバータ)アプリケーションをよりスマートかつ効率的にできます。

## リソース

- TIDA-01636                      デザイン・フォルダ
- OPA365-Q1                      プロダクト・フォルダ
- TMS320F28069M                プロダクト・フォルダ

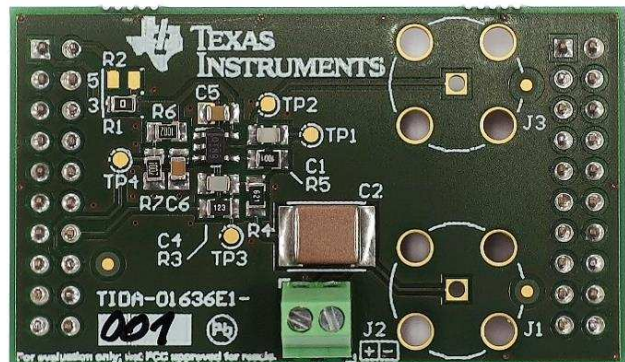
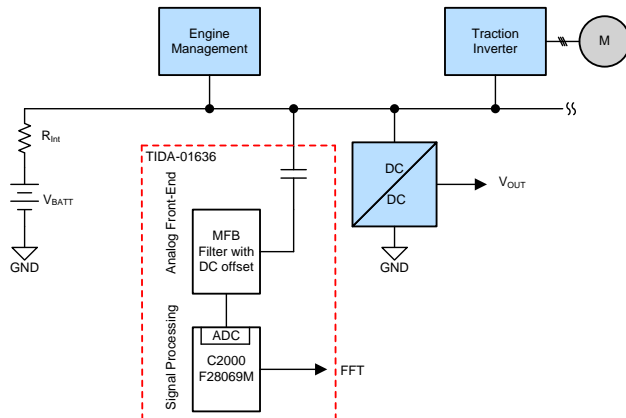


## 特長

- 複数帰還フィルタ(MFB)トポロジ
- 単一電源
- ソース・コードを含む、TMS320F28069M C2000 MCU用のファイアウォールのサンプル

## アプリケーション

- HEVおよびEVのインバータおよびモータ制御
- HEVおよびEVのDC/DCコンバータ
- 各種のリップル・カウンタ





使用許可、知的財産、その他免責事項は、最終ページにあるIMPORTANT NOTICE (重要な注意事項)をご参照くださいますようお願いいたします。

## 1 System Description

The TIDA-01636 reference design consists of an active multiple feedback topology (MFB) pass-band filter and a host MCU. Input of the filter connects to the in-vehicle voltage rail. The filter passes and amplifies the signal in the band of interest. The board connects to the LAUNCHXL-F28069M LaunchPad™ Development Kit with the TMS320F28069M host microcontroller from the C2000 family. The microcontroller uses the integrated ADC for signal conversion and performs FFT. This process builds magnitude spectrum of the voltage rail ripple. The host system in an HEV or EV vehicle can use the information for smart control of other in-vehicle systems.

図 1 shows the reference design from the top and the bottom side.

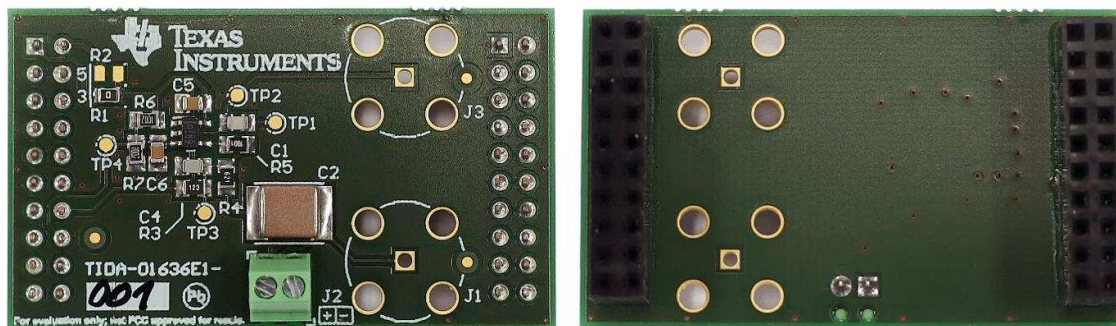


図 1. TIDA-01636 Board (Top and Bottom)

### 1.1 Key System Specifications

表 1. Key System Specifications

PARAMETER	SPECIFICATIONS
Input Supply Voltage	3.3 V or 5 V from the LaunchPad Development Kit
Input Signal Amplitude	Maximum 170 mV <sub>p-p</sub>
Filter Bandwidth	77.8 Hz to 1.19 MHz
Filter Gain	25.73 dB (pass-band)
Filter Order	1st order high-pass filter, 2nd order low-pass filter
FFT Stages	10
ADC Sample Rate	1.75 MSPS (up to 3.46 MSPS)
ADC Buffer	2048B
ADC Resolution	12 bit
ADC Reference	Integrated, 3.3 V
Form Factor	2-layer PCB 50 mm x 30 mm
Interface	Code Composer Studio™ (CCS) software

## 2 System Overview

### 2.1 Block Diagram

Figure 2 shows a block diagram of the TIDA-01636 reference design and the typical implementation in the system.

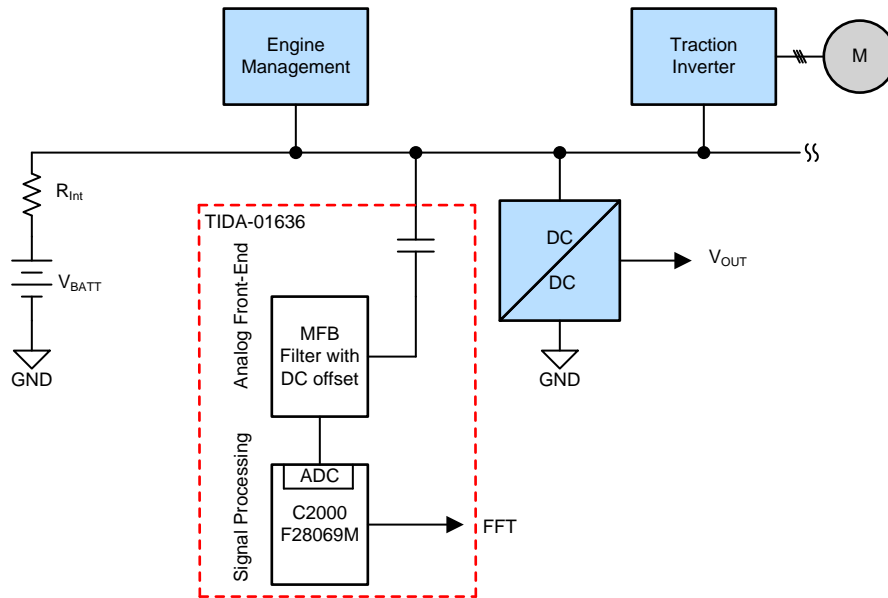


Figure 2. TIDA-01636 Block Diagram

### 2.2 Highlighted Products

#### 2.2.1 OPA365-Q1

The OPA365-Q1 zero-crossover family, rail-to-rail, high-performance, CMOS operational amplifiers are optimized for very low voltage, single-supply applications. Rail-to-rail input/output, low noise ( $4.5 \text{ nV}/\sqrt{\text{Hz}}$ ) and high-speed operation (50-MHz gain bandwidth) make these devices ideal for driving sampling data converters (such as the ADS7822-Q1 or the ADS1115-Q1 devices), specifically in short to mid-range radar applications. The OPA365-Q1 family of operational amplifiers are also well-suited for HEV or EV and powertrain applications in DC-DC converters and as transmission control in engine control units.

Special features include an excellent common-mode rejection ratio (CMRR), no input stage crossover distortion, high input impedance, and rail-to-rail input and output swing. The input common-mode range includes both the negative and positive supplies. The output voltage swing is within 10 mV of the rails.

The OPA365-Q1 device (single version) is available in the 5-pin SOT-23 package. The OPA2365-Q1 device (dual version) is available in the 8-pin SOIC package. All versions are specified for operation from  $-40^\circ\text{C}$  to  $125^\circ\text{C}$ . Single and dual versions have identical specifications for maximum design flexibility.

## 2.2.2 C2000™ TMS320F28069M MCU

The F2806x Piccolo™ family of microcontrollers (MCUs) provides the power of the C28x core and control law accelerator (CLA) coupled with highly-integrated control peripherals in low pin-count devices. This family is code-compatible with previous C28x-based code, and also provides a high level of analog integration. An internal voltage regulator allows for single-rail operation. Enhancements have been made to the high-resolution pulse-width modulator (HRPWM) module to allow for dual-edge control (frequency modulation). Analog comparators with internal 10-bit references have been added and can be routed directly to control the ePWM outputs. The ADC converts from a 0- to 3.3-V fixed full-scale range and supports ratio-metric VREFHI and VREFLO references. The ADC interface has been optimized for low overhead and latency.

## 2.3 System Design Theory

### 2.3.1 Pass Band Filter Design

Figure 3 shows a circuit diagram for the pass-band filter. The filter splits in two parts:

- High-pass filter (1st order,  $-20$  dB/dek)
- Low-pass filter (2nd order,  $-40$  dB/dek )

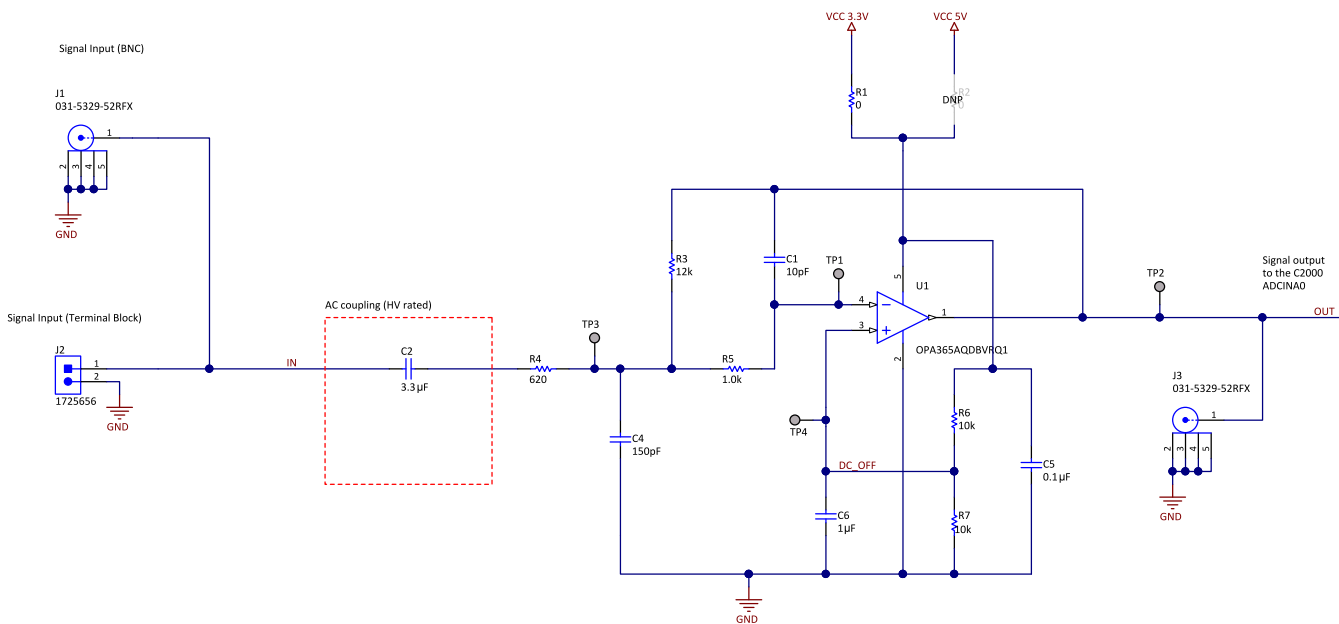


Figure 3. Pass-Band Active Filter in TIDA-01636

The input signal connects to the filter through the terminal block J2. Alternatively, the BNC connector J1 serves this purpose during circuit debugging.

The coupling capacitor C2 and input impedance of the subsequent active filter define the high-pass cutoff frequency. Some assumptions can be made to simplify input impedance calculation. The cutoff frequency for the high-pass filter is significantly lower than the cutoff frequency for the active low-pass filter. For this reason, the analysis can ignore capacitors C1 and C4 and treat them as an open circuit. In this case, resistor R5 is in series only with the inverting input of the operational amplifier U1 and can be ignored as well. Using this simplification turns the circuit into an inverting amplifier where resistors R4 and R3 set gain. Resistor R4 is then the effective input impedance. These assumptions set cutoff frequency of the high-pass filter as per [Equation 1](#). It is important that the voltage rating of the capacitor C2 is higher than maximum DC voltage from the signal source.

$$f_{c(\text{high-pass})} = \frac{1}{2\pi \times C2 \times R4} = \frac{1}{2\pi \times 3.3 \mu\text{F} \times 620 \text{ k}\Omega} = 77.8 \text{ Hz } (-3 \text{ dB}) \quad (1)$$

The cutoff frequency of the low-pass filter is independent of the C2 selection. Resistors R3 and R4 set the gain for the band of interest as per [Equation 2](#).

$$A_{\text{PASS}} = -\frac{R3}{R4} = \frac{12 \text{ k}\Omega}{620 \text{ k}\Omega} = 19.35 \rightarrow 20 \times \log 19.35 = 25.73 \text{ dB} \quad (2)$$

[Equation 3](#) defines the cutoff frequency for the MFB low-pass filter.

$$f_{c(\text{low-pass})} = \frac{1}{2\pi \times \sqrt{R3 \times R5 \times C1 \times C4}} = \frac{1}{2\pi \times \sqrt{12 \text{ k}\Omega \times 1 \text{ k}\Omega \times 10 \text{ pF} \times 150 \text{ pF}}} = 1.19 \text{ MHz} \quad (3)$$

The resistor divider R6, R7 creates a virtual ground for the single-supply filter. Capacitor C6 reduces the noise on the non-inverting input pin of the operational amplifier. Capacitor C5 is a bypassing capacitor for U1. Resistors R1 and R2 are power-supply selectors which enable power either from the 3.3-V or 5-V rail from the C2000 LaunchPad.


---

注: The cutoff frequency is typically identified as the point where the transfer function of a filter drops by  $-3$  dB. This drop corresponds to approximately half of the power transfer. However, higher-order filters have a steeper rolloff (for example:  $-40$  dB/dek for a second-order filter) and the cutoff frequency is defined as  $n(-3$  dB) where  $n$  is the filter order. This definition often causes confusion because some technical articles or online calculators use formulas referring to the  $-3$ -dB point; whereas, others use  $n(-3$  dB). Check the calculation using a simulation tool.

---

### 2.3.2 Firmware

Embedded firmware for the C2000 LaunchPad development board uses the FFT function from the FPU DSP Software Library from Texas Instruments which is a part of controlSUITE™ software package. The typical installation path is "C:\ti\controlSUITE\libs\dsp\FPU\v1\_50\_00\_00\include\". Documentation for the library is typically found at "C:\ti\controlSUITE\libs\dsp\FPU\v1\_50\_00\_00\doc\FPU-SW-LIB-UG.pdf". Refer to the manual for details on how to use and configure FFT routines used in the reference design.

 [4](#) shows a flow diagram of the source code. The MCU uses a Direct Memory Access (DMA) unit for automatic transfer of ADC data into a buffer. The main loop waits until the DMA fills the buffer and calculates FFT based on the configuration. A user has access to FFT data through Code Composer Studio (CCS).

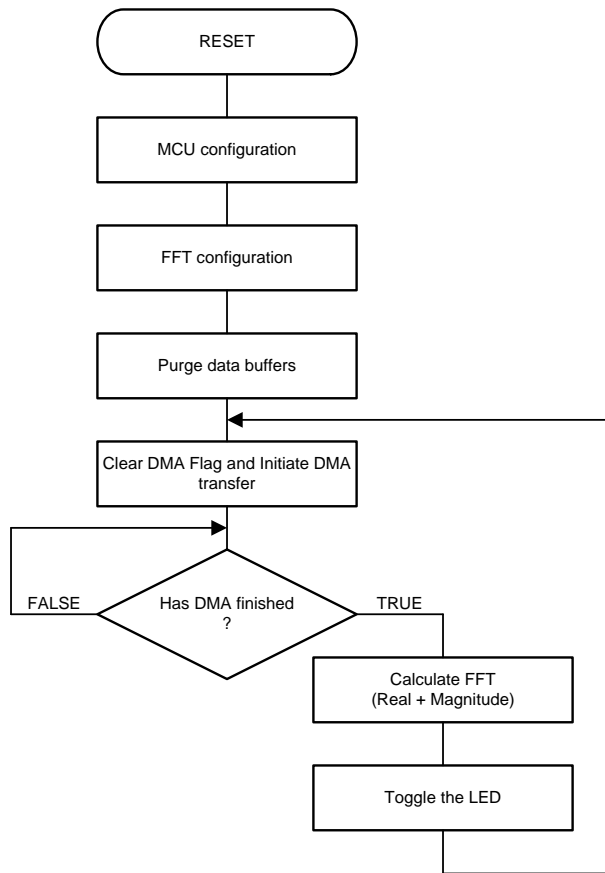


図 4. TIDA-01636 Firmware Flow Chart

### 2.3.3 Aliasing

Every analog-to-digital conversion system must consider the aliasing phenomenon to process data without distortion. This phenomenon causes every spectral content with frequency higher than half of the ADC sampling frequency wrapping around this frequency and starting affecting the band of interest. This corrupts data. The ADC sampling frequency must be at least twice the highest frequency of the input signal spectrum. Refer to for more details on aliasing and anti-aliasing filters.

図 5 shows the effect of aliasing.

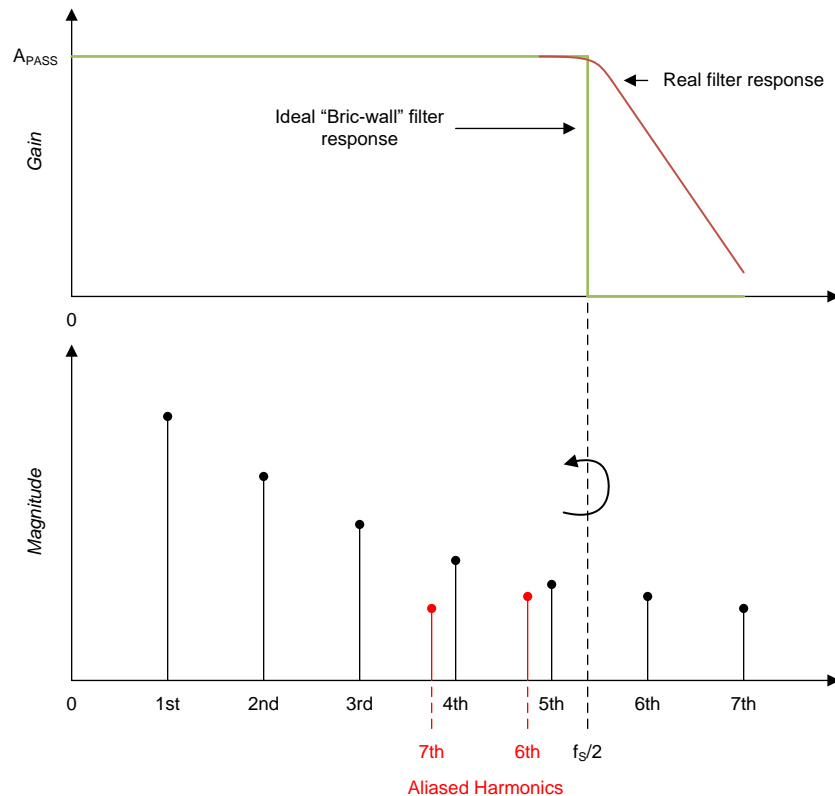


図 5. Aliasing Effect and Filter Response

Ideally, the low-pass filter passes every spectral content up to the half of sampling frequency. All spectral content above is suppressed to zero. However, a real filter has limited roll-off slope (for example,  $-20$  dB/dek,  $-40$  dB/dek) which corresponds to the filter order. For this reason, the filter may not sufficiently suppress harmonics above the half of switching frequency and they fold to the band of interest. This causes data corruption. Selecting the proper filter order, bandwidth, and sampling frequency typically requires some trade-offs. The anti-aliasing filter should be set in the way that all aliased spectral content is close to native noise level or below resolution of the system.

There are integrated analog filters which are close to the ideal "brick-wall" response but they are expensive. Note that the digital filter in the MCU does not help to avoid aliasing. The system must implement a low-pass filtering in the analog domain before analog-to-digital conversion.

## 3 Hardware, Software, Testing Requirements, and Test Results

### 3.1 Required Hardware and Software


#### 3.1.1 Hardware

To start with the TIDA-01636 reference design:

1. Plug the reference design to the LAUNCHXL-F28069M board. The correct position of the PCB is shown in the circuit diagram.
2. Connect the LaunchPad with the reference design to the personal computer using the provided USB cable. LEDs on the LaunchPad show activity.
3. Use twisted wires for connecting the terminal J2 to the analyzed voltage rail. Alternatively, use the BNC connector J1 as the signal input.

#### 3.1.2 Software

The reference design requires the Code Composer Studio (CCS) development tool for uploading the code example to the MCU and displaying the data. Use the following procedure to upload and run the firmware:

1. Install Code Composer Studio which is available from [www.ti.com/ccs](http://www.ti.com/ccs). Make sure that you select the C2000 compiler and XDS100 drivers during the installation.  
(The CCS 7.4 and TI v16.9.1.LTS compiler were used for the TIDA-01636 development).
2. Import the provided firmware from *File->Import->CCS project* menu.
3. Try to compile the code (*Project->Build All* from the menu). Make sure that compilation passes without any error or warning. If there are missing resources (libraries), download and install C2000 Ware from [www.ti.com/tool/C2000WARE](http://www.ti.com/tool/C2000WARE).
4. Run the project from the *Run->Debug* menu. This programs the microcontroller.
5. Start code execution from the *Run->Resume* menu.
6. Show a graph plot from the *Tools->Graph-Single Time* menu. Fill in parameters in the dialog as  6 shows.



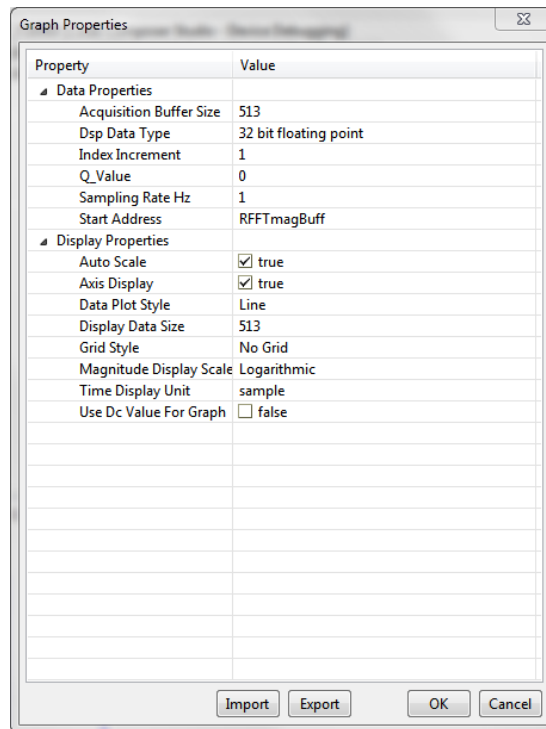
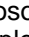


図 6. Graph Settings in Code Composer Studio™ for TIDA-01636

7. A graph appears after confirming the previous dialog. Make sure that you enable continuous refresh by clicking on the icon. You can export data to .csv format and import them to programs such as Microsoft® Excel® or MATLAB®.  7 shows an example of the plot in CCS. The example shows an FFT plot of a sinewave with  $V_{amp} = 80 \text{ mV}$  and  $f = 100 \text{ kHz}$ .

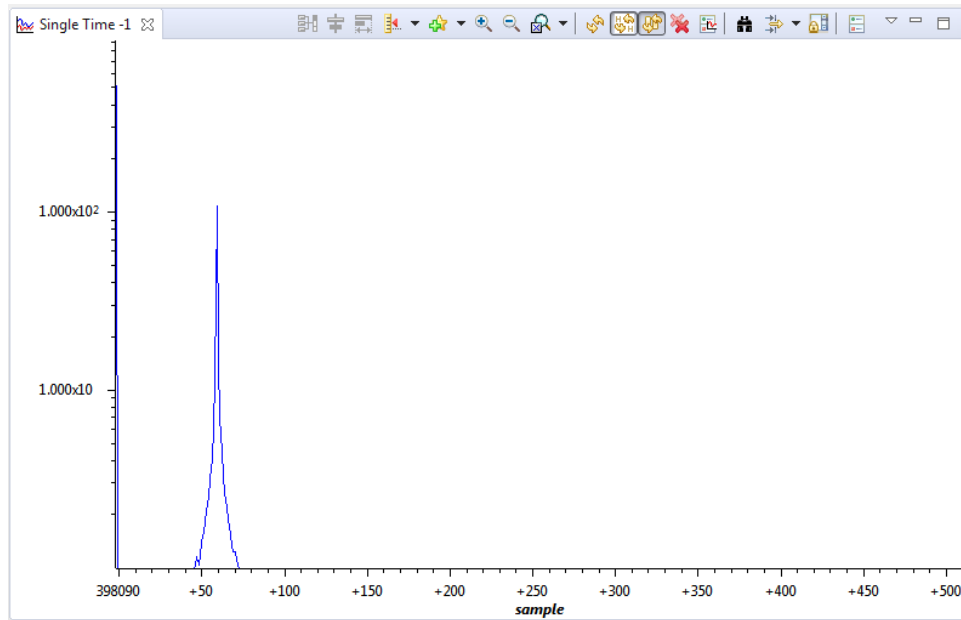


図 7. Graph in Code Composer Studio™ Showing 100-kHz Sinewave Magnitude Spectrum

---

注: For detailed tutorials on how to program, compile, and debug using TI's MCUs, see [processors.wiki.ti.com](http://processors.wiki.ti.com). Alternatively, TI also offers live support within the [E2E™](#) online community.

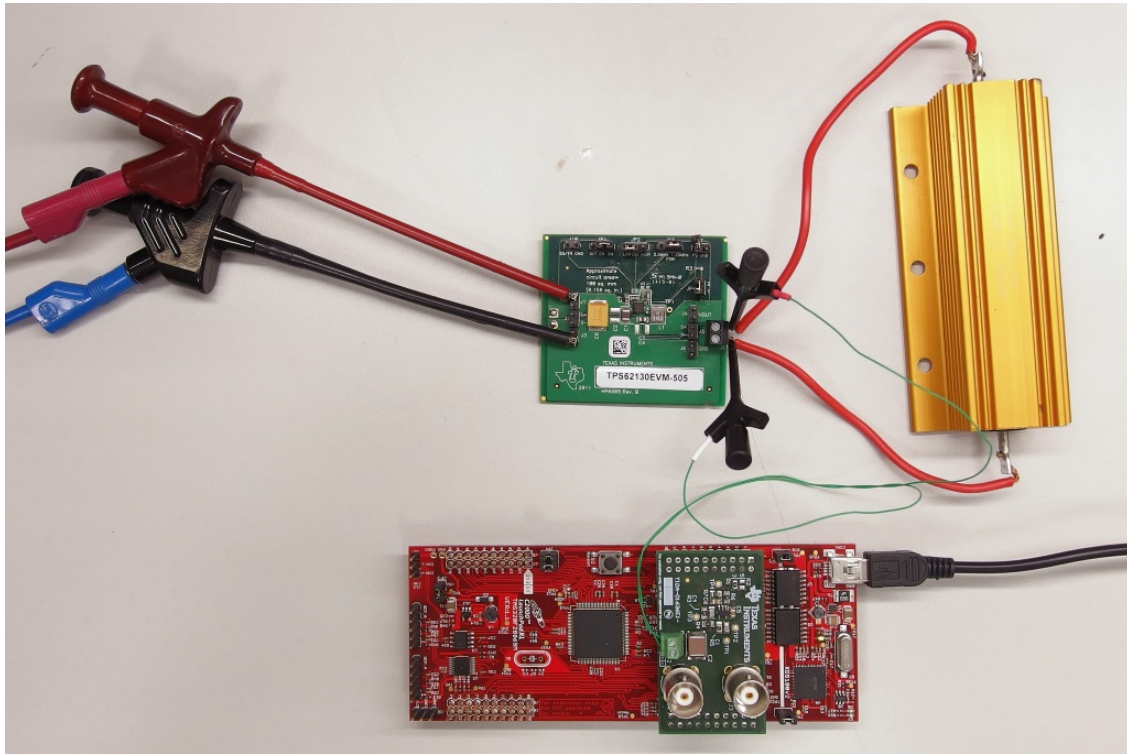
---

## 3.2 Testing and Results

### 3.2.1 Test Setup

The test setups consists of a personal computer running Code Composer Studio, TIDA-01636 reference design connected to the LaunchPad, and the source of a signal. Measurements in this section use various evaluation modules with DC-DC converters.

☒ 8 shows an example of a typical test setup.

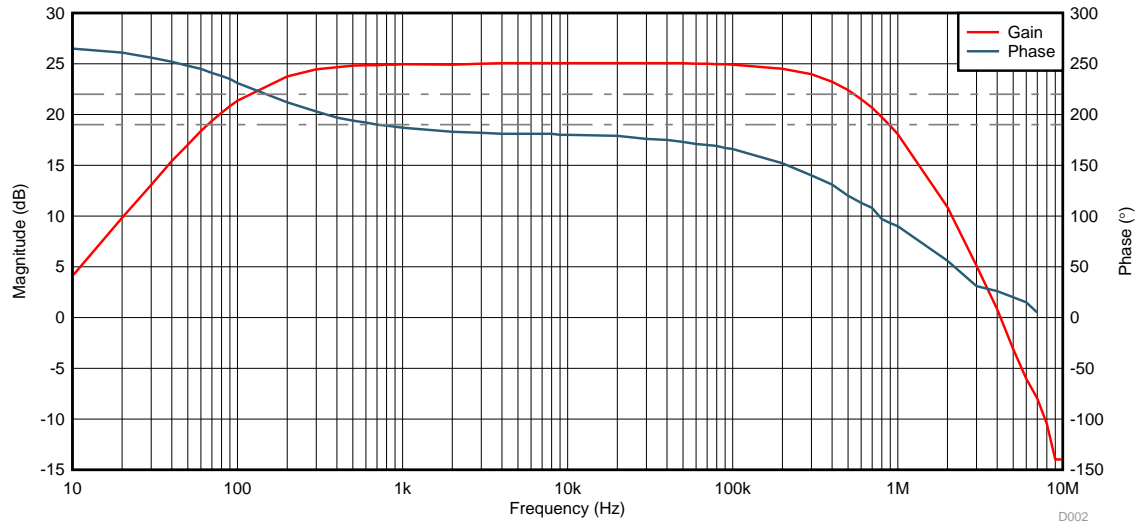


☒ 8. TIDA-01636 Test Setup

## 3.2.2 Test Results

### 3.2.2.1 TIDA-01636 Low-Pass MFB Filter Response

Figure 9 shows the TIDA-01636 filter gain and phase measurement data.



This measurement uses a 2.2- $\mu$ F capacitor in place of C2. This increases the cutoff frequency for the high-pass filter to  $f_c = 117$  Hz.

Figure 9. TIDA-01636 Filter Gain and Phase Response

### 3.2.2.2 TIDA-01636 With LM20242EVAL

Figure 10 shows an FFT plot from the TIDA-01636 connected to the LM20242 evaluation board. The evaluation board operates in the following conditions:

- Input voltage: 16 V
- Output voltage: 3.3 V
- Load: 1 A (constant conduction mode - CCM)
- Switching frequency: nominal 300 kHz

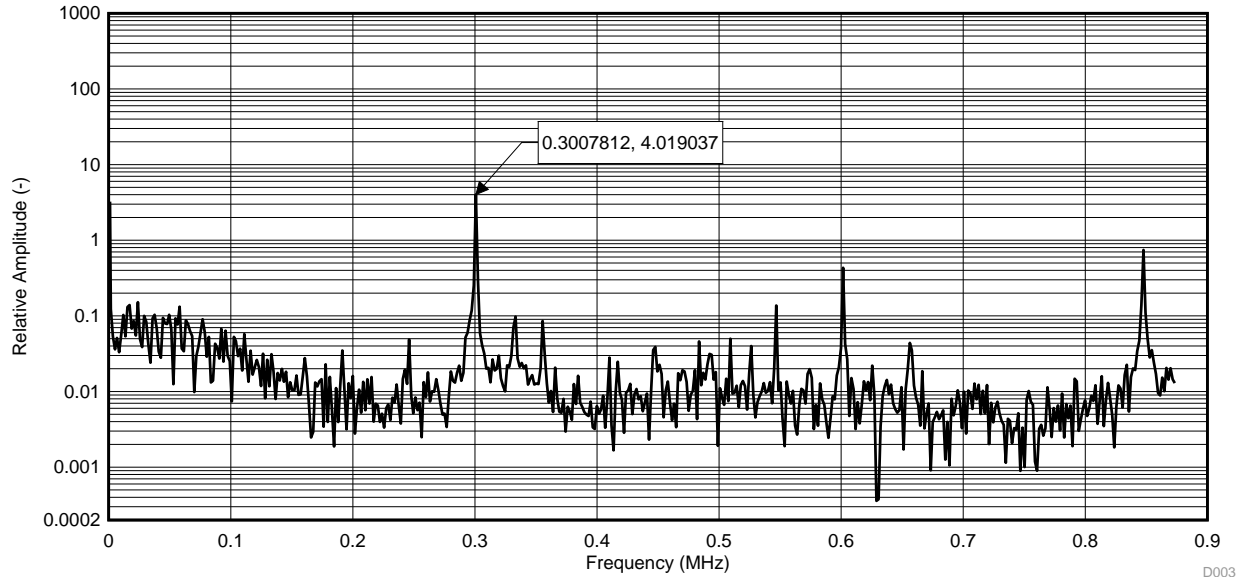
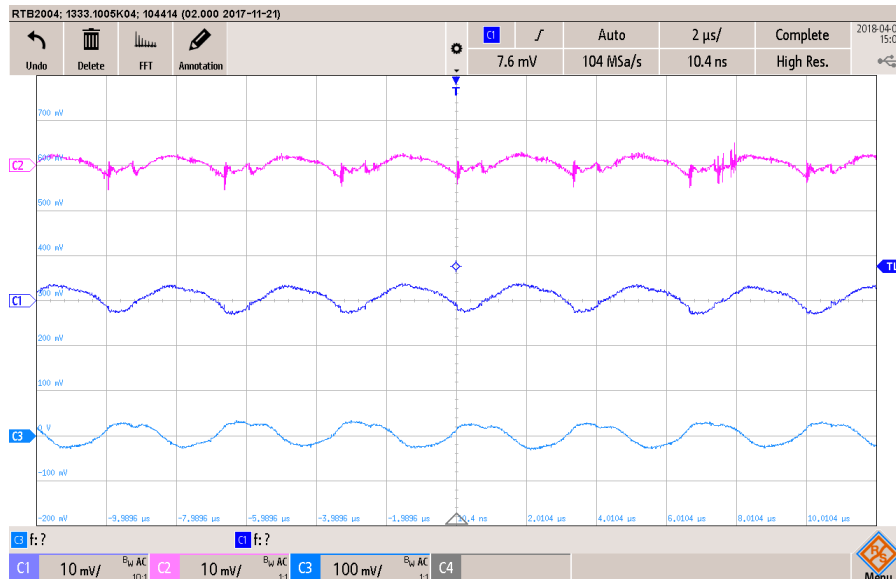


Figure 10. FFT Analysis of LM20242 Evaluation Board Running at 300 kHz in CCM

Figure 11 shows the output ripple of the LM20242 evaluation board in the time domain.



- CH1 - Voltage ripple at the output capacitor measured with 1:10 oscilloscope probe with spring ground terminal.
- CH2 - Signal at the input of the TIDA-01636.
- CH3 - Signal at the output of the TIDA-01636.

Figure 11. TIDA-01636 and LM20242 EVM Waveforms (CCM)

### 3.2.2.3 TIDA-01636 With LM3100EVAL

Figure 10 shows an FFT plot from the TIDA-01636 connected to the LM3100 evaluation board. The evaluation board operates in the following conditions:

- Input voltage: 16 V
- Output voltage: 3.3 V
- Load: 1 A (constant conduction mode - CCM)
- Switching frequency: nominal 250 kHz

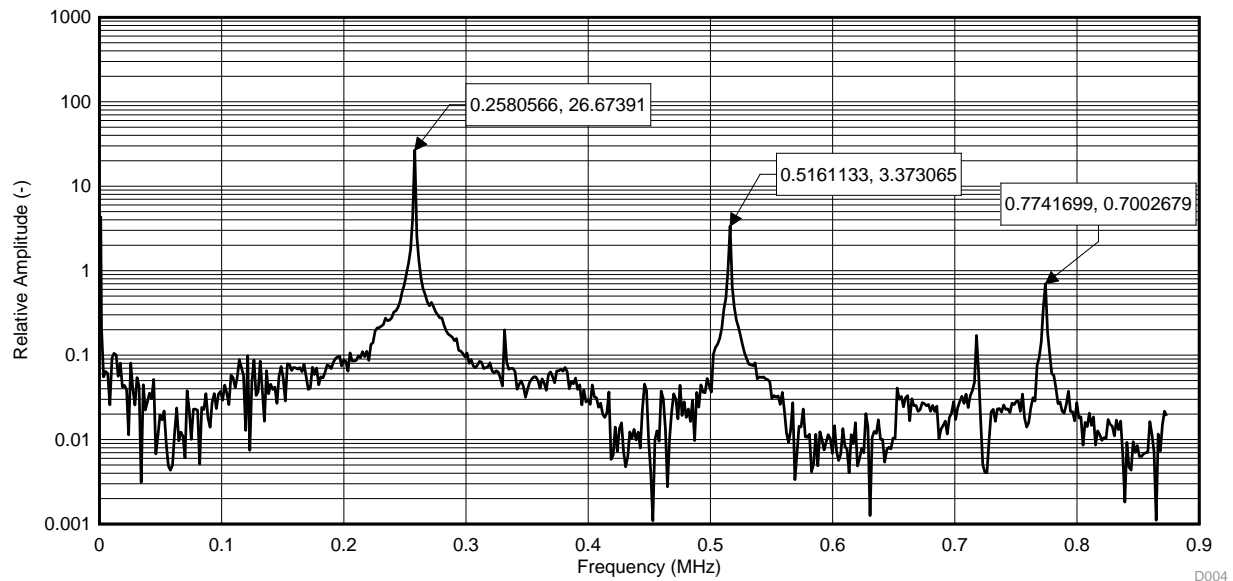


Figure 12. FFT Analysis of LM3100 Evaluation Board Running at 250 kHz in CCM

Alternatively, Figure 13 shows the board operating in discontinuous mode (DCM).

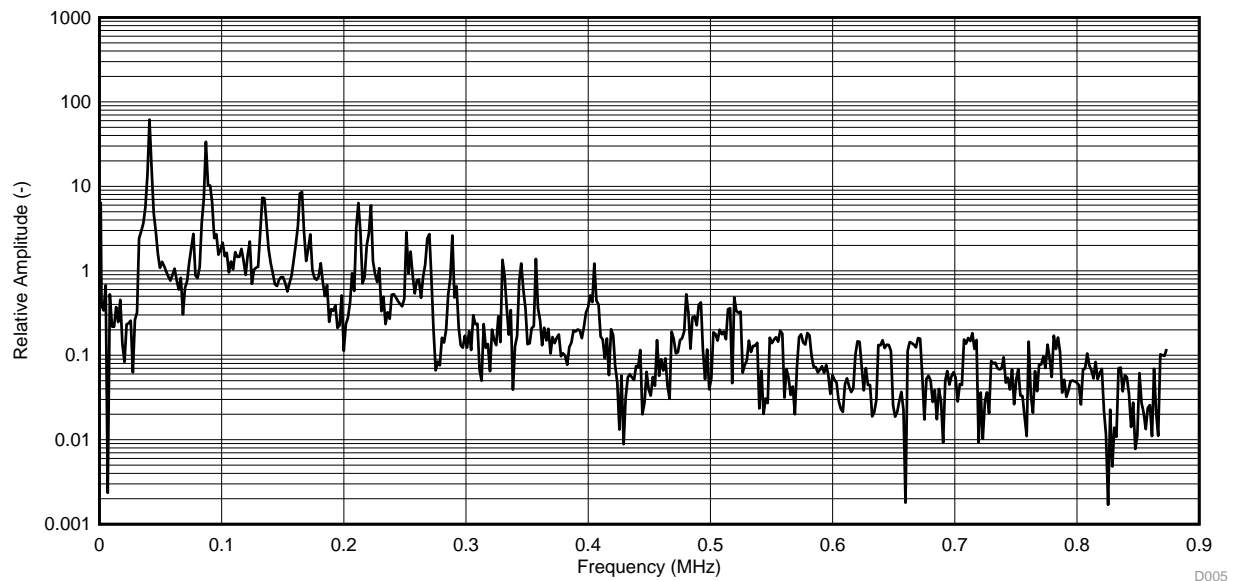
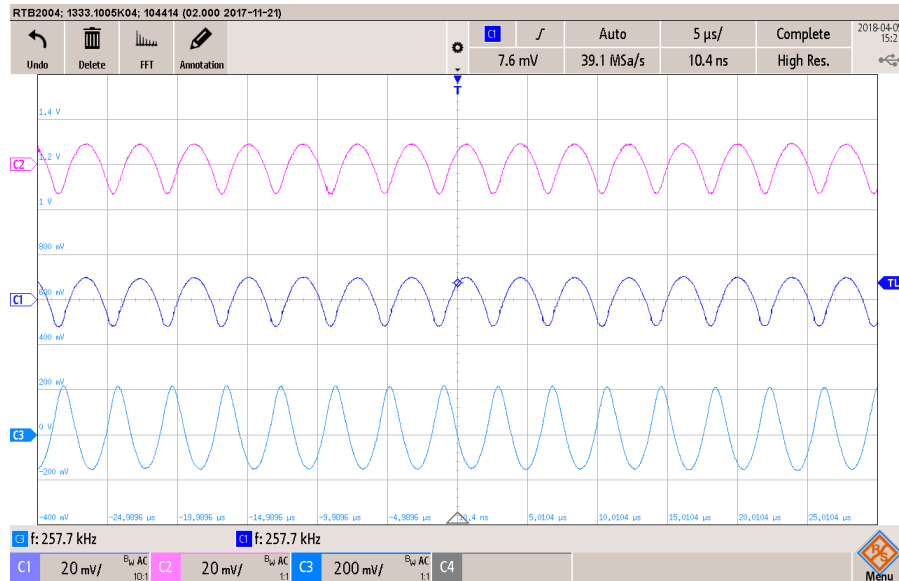


Figure 13. FFT Analysis of LM3100 Evaluation Board Running at 250 kHz in DCM

Figure 14 shows the output ripple of the LM3100 evaluation board in the time domain when operating in CCM.



CH1 - Voltage ripple at the output capacitor measured with 1:10 oscilloscope probe with spring ground terminal.  
 CH2 - Signal at the input of the TIDA-01636.  
 CH3 - Signal at the output of the TIDA-01636.

Figure 14. TIDA-01636 and LM3100 EVM Waveforms (CCM)

### 3.2.2.4 TIDA-01636 With LM3150EVAL

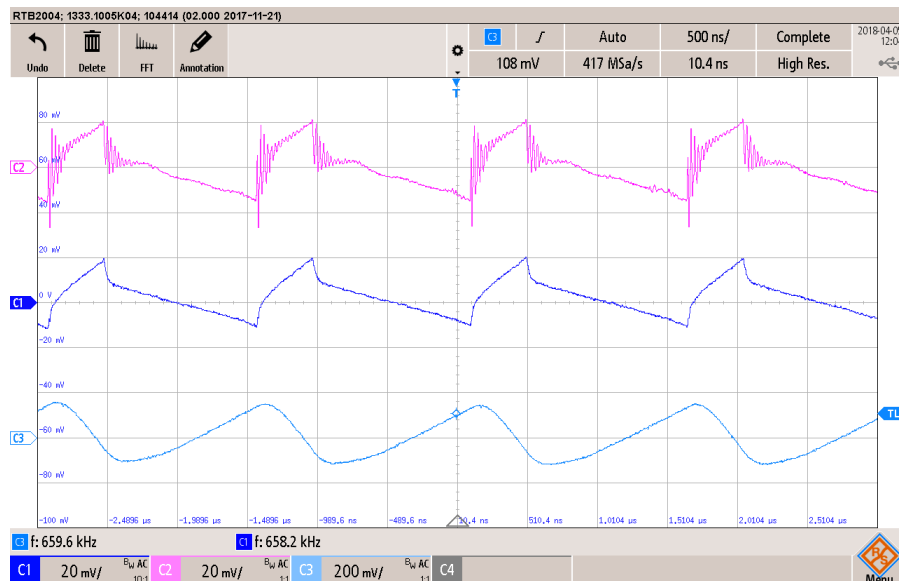
Figure 15 shows an FFT plot from the TIDA-01636 connected to the LM3150 evaluation board. The evaluation board operates in the following conditions:

- Input voltage: 13.2 V
- Output voltage: 3.3 V
- Load: 2 A (constant conduction mode - CCM)
- Switching frequency: nominal 650 kHz

Note the aliased 2nd and 3rd harmonics.

Figure 15. FFT Analysis of LM3150 Evaluation Board Running at 650 kHz in CCM

Figure 16 shows the output ripple of the LM3150 evaluation board in the time domain when operating in CCM.



- CH1 - Voltage ripple at the output capacitor measured with 1:10 oscilloscope probe with spring ground terminal.
- CH2 - Signal at the input of the TIDA-01636.
- CH3 - Signal at the output of the TIDA-01636.

Figure 16. TIDA-01636 and LM3150 EVM Waveforms (CCM)



### 3.2.2.5 TIDA-01636 With LM5001 Flyback

Figure 17 shows an FFT plot from the TIDA-01636 connected to the LM5001 Flyback DC/DC converter. The DC/DC converter operates in following conditions:

- Input voltage: 24 V
- Output voltage: 2 × 5 V (isolated)
- Load: 0.5-A discontinuous mode - DCM)
- Switching frequency: nominal 100 kHz

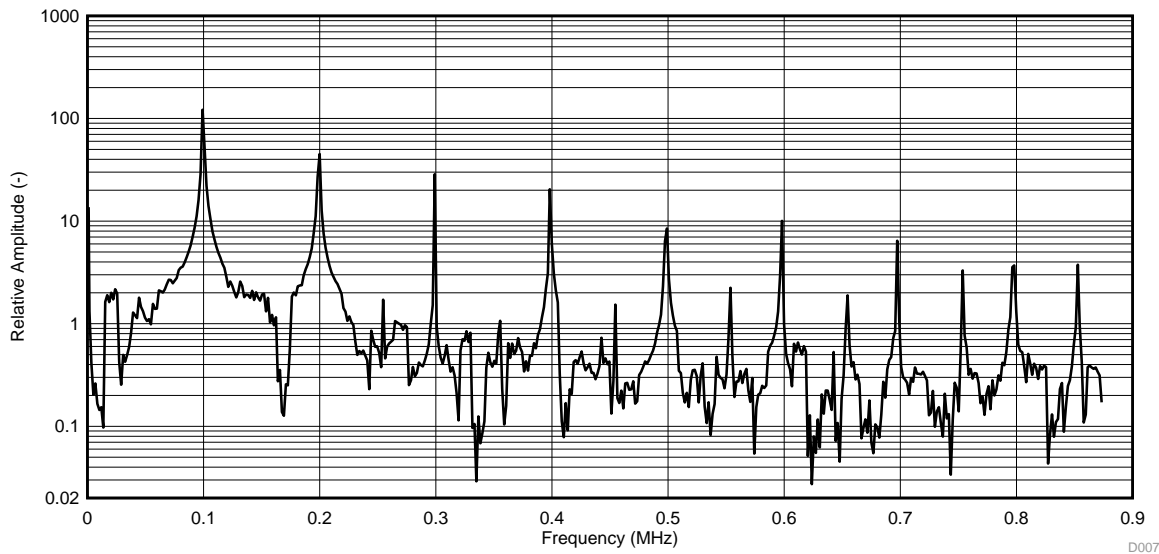
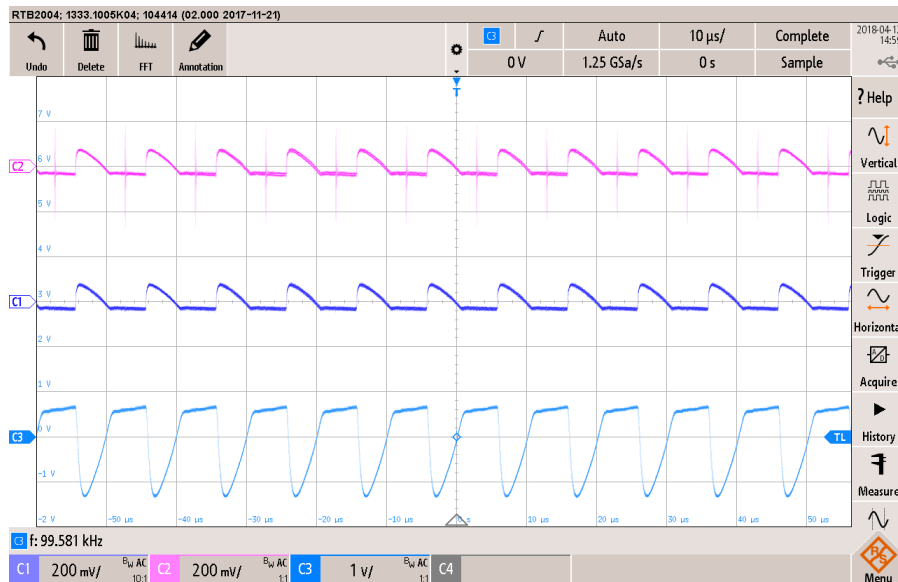


Figure 17. FFT Analysis of LM5001 Flyback DC/DC Converter Running at 100 kHz in DCM

Figure 18 shows the output ripple of the LM5001 Flyback DC/DC converter in the time domain when operating in DCM.



- CH1 - Voltage ripple at the output capacitor measured with a 1:10 oscilloscope probe with spring ground terminal.
- CH2 - Signal at the input of the TIDA-01636.
- CH3 - Signal at the output of the TIDA-01636.

Figure 18. TIDA-01636 and LM5001 Flyback DC/DC Converter Waveforms (DCM)

### 3.2.2.6 TIDA-01636 With LMZ14203HEVAL

Figure 19 shows an FFT plot from the TIDA-01636 connected to the LMZ14203 evaluation board. The evaluation board is used in following conditions:

- Input voltage: 16.3 V
- Output voltage: 12.0 V
- Load: 2 A
- Switching frequency: nominal 400 kHz

Note the aliased harmonics.

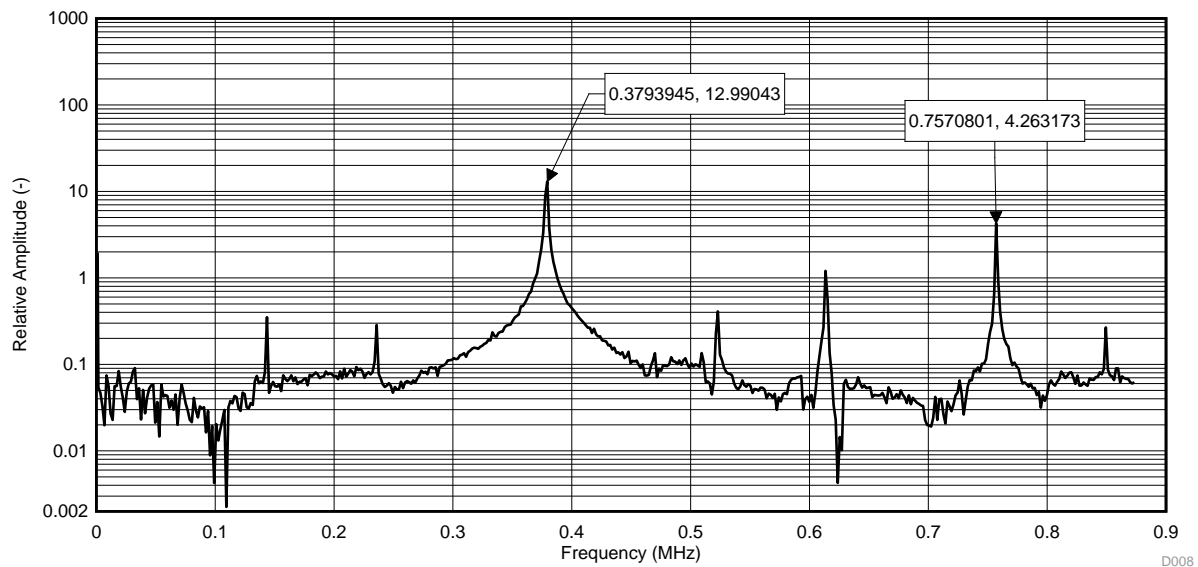
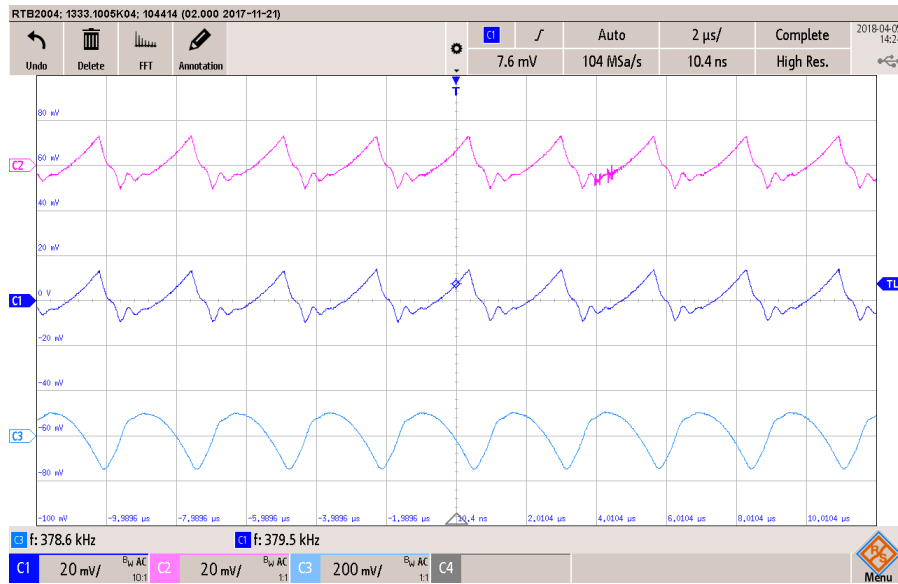


Figure 19. FFT Analysis of LMZ14203H EVM Running at Nominal 400 kHz

Figure 20 shows the output ripple of the LMZ14203H evaluation board in time domain.



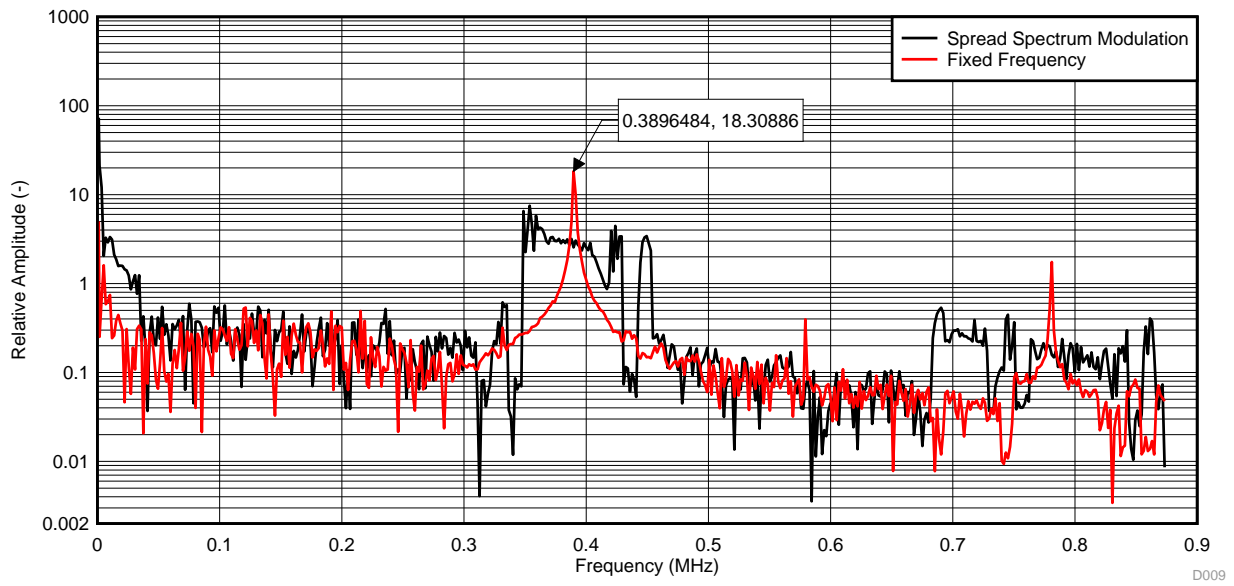
CH1 - Voltage ripple at the output capacitor measured with a 1:10 oscilloscope probe with spring ground terminal.  
 CH2 - Signal at the input of the TIDA-01636.  
 CH3 - Signal at the output of the TIDA-01636.

図 20. TIDA-01636 and LMZ14203H EVM Waveforms

### 3.2.2.7 TIDA-01636 With TPS92692EVM-880

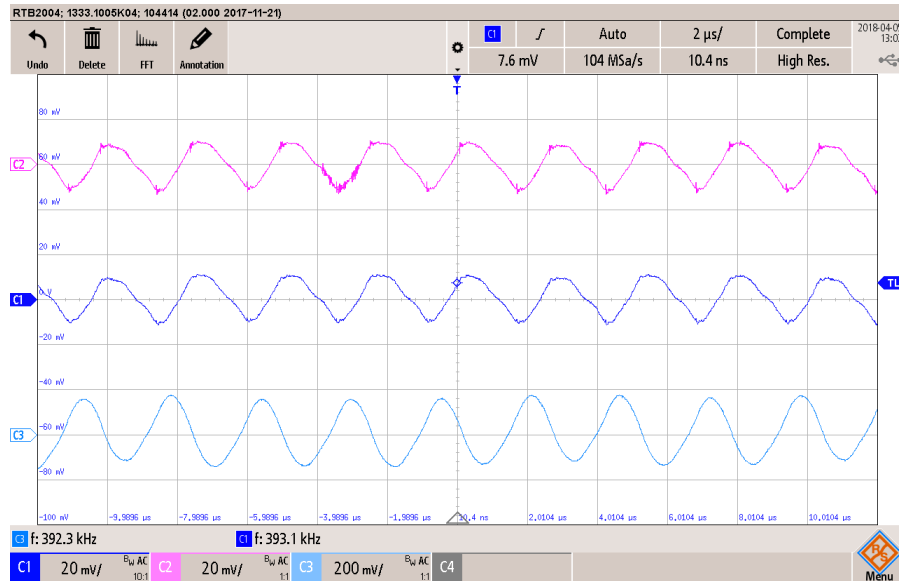
図 21 shows an FFT plot from the TIDA-01636 connected to the TPS92692 evaluation board. The evaluation board operates in following conditions:

- Input voltage: 12.0 V
- Full brightness
- Switching frequency: nominal 390 kHz
- Boost configuration
- Dither modulation frequency: 600 Hz



21. FFT Analysis of TPS92692 EVM Running at Nominal 390 kHz With (Blue Trace) and Without (Red Trace) Spread Spectrum Modulation

Figure 22 shows the output ripple of the TPS92692 evaluation board in the time domain.



- CH1 - Voltage ripple at the output capacitor measured with a 1:10 oscilloscope probe with spring ground terminal.
- CH2 - Signal at the input of the TIDA-01636.
- CH3 - Signal at the output of the TIDA-01636.

Figure 22. TIDA-01636 and TPS92692 EVM Waveforms

### 3.2.3 Conclusion

The TIDA-01636 reference design proves the concept of using a band-pass filter with FFT analysis for disturbances identification on a power rail. The reference design works well with signal sources operating in the lower range (<100 kHz) of the band of interest. Analysis of DC/DC converters operating with higher frequencies (>100 kHz) suffer from aliasing. TI recommends adding additional low-pass filters in-series with the output of the reference design as well as increasing sampling frequency, if possible.

## 4 Design Files

### 4.1 Schematics

To download the schematics, see the design files at [TIDA-01636](#).

### 4.2 Bill of Materials

To download the bill of materials (BOM), see the design files at [TIDA-01636](#).

### 4.3 PCB Layout Recommendations

The TIDA-01636 reference design does not require any special PCB layout considerations. The PCB has two layers with 35- $\mu$ m copper plating. The top layer ([Fig 23](#)) is reserved for components and signal traces. The bottom layer ([Fig 24](#)) provides the current return path - signal ground.

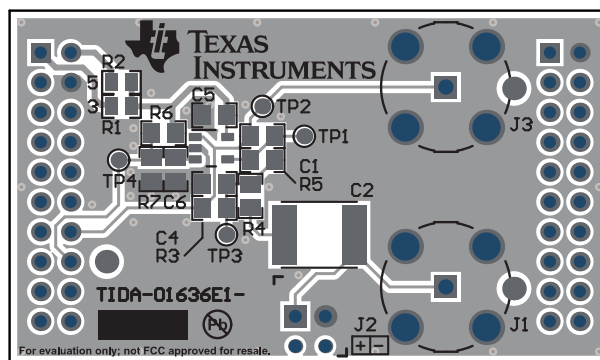


図 23. TIDA-01636 PCB Composite Top View

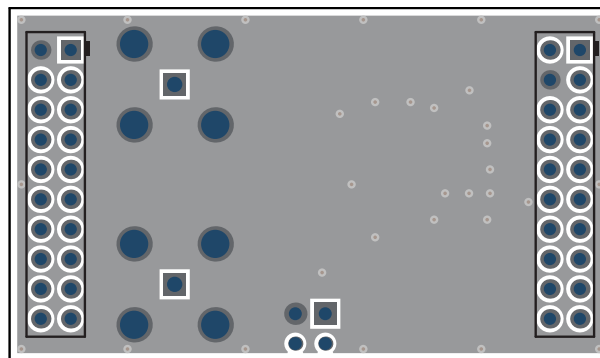


図 24. TIDA-01636 PCB Composite Bottom View

### 4.3.1 Layout Prints

To download the layer plots, see the design files at [TIDA-01636](#).

### 4.4 Altium Project

To download the Altium Designer® project files, see the design files at [TIDA-01636](#).

### 4.5 Gerber Files

To download the Gerber files, see the design files at [TIDA-01636](#).

### 4.6 Assembly Drawings

To download the assembly drawings, see the design files at [TIDA-01636](#).

## 5 Software Files

To download the software files, see the design files at [TIDA-01636](#).

## 6 Related Documentation

1. Texas Instruments, [Aliasing and Anti-aliasing Filters](#), Peggy Liska

### 6.1 Trademarks

C2000, E2E, LaunchPad, Code Composer Studio, controlSUITE are trademarks of Texas Instruments. Altium Designer is a registered trademark of Altium LLC or its affiliated companies. Microsoft, Excel are registered trademarks of Microsoft Corporation. MATLAB is a registered trademark of The MathWorks, Inc..  
すべての商標および登録商標はそれぞれの所有者に帰属します。

## 7 About the Author

**TIM PEISKER** is an intern in the Powertrain Automotive Systems team at Texas Instruments from the Wentworth Institute of Technology in Boston, MA. Tim studies applied mathematics and prepares for his bachelor's graduation in summer 2018.

**JIRI PANACEK** is a systems engineer in the Powertrain Automotive Systems team at Texas Instruments where he develops reference designs. Jiri has five years of field experience in the industrial automation and most recently the HEV and EV automotive segment. Jiri earned his master's degree in microelectronics from the Brno University of Technology in the Czech Republic.

## TIの設計情報およびリソースに関する重要な注意事項

Texas Instruments Incorporated ("TI")の技術、アプリケーションその他設計に関する助言、サービスまたは情報は、TI製品を組み込んだアプリケーションを開発する設計者に役立つことを目的として提供するものです。これにはリファレンス設計や、評価モジュールに関係する資料が含まれますが、これらに限られません。以下、これらを総称して「TIリソース」と呼びます。いかなる方法であっても、TIリソースのいずれかをダウンロード、アクセス、または使用した場合、お客様(個人、または会社を代表している場合にはお客様の会社)は、これらのリソースをここに記載された目的にのみ使用し、この注意事項の条項に従うことに合意したものとします。

TIによるTIリソースの提供は、TI製品に対する該当の発行済み保証事項または免責事項を拡張またはいかなる形でも変更するものではなく、これらのTIリソースを提供することによって、TIにはいかなる追加義務も責任も発生しないものとします。TIは、自社のTIリソースに訂正、拡張、改良、およびその他の変更を加える権利を留保します。

お客様は、自らのアプリケーションの設計において、ご自身が独自に分析、評価、判断を行う責任がお客様にあり、お客様のアプリケーション(および、お客様のアプリケーションに使用されるすべてのTI製品)の安全性、および該当するすべての規制、法、その他適用される要件への遵守を保証するすべての責任をお客様のみが負うことを理解し、合意するものとします。お客様は、自身のアプリケーションに関して、(1) 故障による危険な結果を予測し、(2) 障害とその結果を監視し、および、(3) 損害を引き起こす障害の可能性を減らし、適切な対策を行う目的での、安全策を開発し実装するために必要な、すべての技術を保持していることを表明するものとします。お客様は、TI製品を含むアプリケーションを使用または配布する前に、それらのアプリケーション、およびアプリケーションに使用されているTI製品の機能性を完全にテストすることに合意するものとします。TIは、特定のTIリソース用に発行されたドキュメントで明示的に記載されているもの以外のテストを実行していません。

お客様は、個別のTIリソースにつき、当該TIリソースに記載されているTI製品を含むアプリケーションの開発に関連する目的でのみ、使用、コピー、変更することが許可されています。明示的または黙示的を問わず、禁反言の法理その他どのような理由でも、他のTIの知的所有権に対するその他のライセンスは付与されません。また、TIまたは他のいかなる第三者のテクノロジーまたは知的所有権についても、いかなるライセンスも付与されるものではありません。付与されないものには、TI製品またはサービスが使用される組み合わせ、機械、プロセスに関連する特許権、著作権、回路配置利用権、その他の知的所有権が含まれますが、これらに限られません。第三者の製品やサービスに関する、またはそれらを参照する情報は、そのような製品またはサービスを利用するライセンスを構成するものではなく、それらに対する保証または推奨を意味するものでもありません。TIリソースを使用するため、第三者の特許または他の知的所有権に基づく第三者からのライセンス、もしくは、TIの特許または他の知的所有権に基づくTIからのライセンスが必要な場合があります。

TIのリソースは、それに含まれるあらゆる欠陥も含めて、「現状のまま」提供されます。TIは、TIリソースまたはその仕様に関して、明示的か暗黙的にかかわらず、他のいかなる保証または表明も行いません。これには、正確性または完全性、権原、続発性の障害に関する保証、および商品性、特定目的への適合性、第三者の知的所有権の非侵害に対する黙示的保証が含まれますが、これらに限られません。

TIは、いかなる苦情に対しても、お客様への弁済または補償を行う義務はなく、行わないものとします。これには、任意の製品の組み合わせに関連する、またはそれらに基づく侵害の請求も含まれますが、これらに限られず、またその事実についてTIリソースまたは他の場所に記載されているか否かを問わないものとします。いかなる場合も、TIリソースまたはその使用に関連して、またはそれらにより発生した、実際の、直接的、特別、付随的、間接的、懲罰的、偶発的、または、結果的な損害について、そのような損害の可能性についてTIが知らされていたかどうかにかかわらず、TIは責任を負わないものとします。

お客様は、この注意事項の条件および条項に従わなかったために発生した、いかなる損害、コスト、損失、責任からも、TIおよびその代表者を完全に免責するものとします。

この注意事項はTIリソースに適用されます。特定の種類の資料、TI製品、およびサービスの使用および購入については、追加条項が適用されます。これには、半導体製品(<http://www.ti.com/sc/docs/stdterms.htm>)、評価モジュール、およびサンプル(<http://www.ti.com/sc/docs/sampterms.htm>)についてのTIの標準条項が含まれますが、これらに限られません。