

デザイン・ガイド: TIDA-050015 ソリューション・サイズと低ノイズに対して最適化された、車載 ADAS カメラ用電源のリファレンス・デザイン



概要

入力範囲の広い電源に関するこのリファレンス・デザインは、スペース制約が厳しい車載用 ADAS カメラ・アプリケーションを目的に設計してあります。サイズ最適化済みのこのデザインは、フロント・エンドの保護機能と、入力電圧範囲の広い DC/DC コンバータを組み合わせ、バッテリー直結型の動作を実現しています。フロント・エンド・フィルタと部品の選択は、CISPR 25 Class 5 の厳格な伝導型電磁干渉 (EMI) 標準に準拠するよう最適化されています。このリファレンス・デザインは既に CISPR 25 Class 5 の伝導 EMI 標準でテスト済みなので、顧客の設計時間を短縮できます。この電源システムは 4 つのレギュレートされた電源レールを、イメージャ、イメージ・プロセッサ、データおよびビデオ・インターフェイスなどのシステム・コンポーネント用に供給できます。

リソース

TIDA-050015	デザイン・フォルダ
LMR33630-Q1	プロダクト・フォルダ
LMR34215-Q1	プロダクト・フォルダ
TPS62420-Q1	プロダクト・フォルダ
LM2775-Q1	プロダクト・フォルダ
LP5907-Q1	プロダクト・フォルダ
LMR36015-Q1	プロダクト・フォルダ



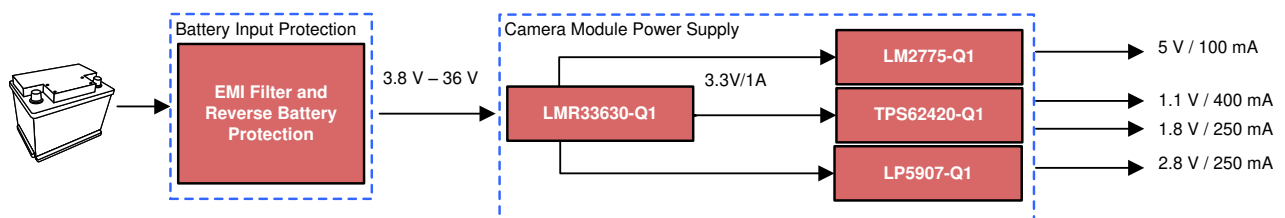
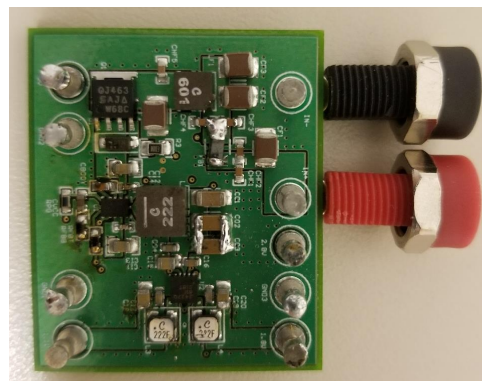
[E2E™ エキスパートに質問](#)

特長

- バッテリーと直接接続する場合に追加部品が不要
- ADAS カメラ・モジュール向けに、ソリューション全体のサイズは 1272mm²
- 4V~36V の広い入力電圧範囲で、スタート/ストップと負荷ダンプ動作をサポート
- バッテリー逆接続条件からの保護を実現するように設計済み
- CISPR 25 Class 5 の伝導型 EMI 規格に従ってテスト済み
- 4 つのレギュレートされた電源レールを供給: 5V (最大 100mA)、2.8V (最大 200mA)、1.8V (最大 250mA)、1.1V (最大 400mA)
- すべてのデバイスは AEC-Q100 に従って認定済み

アプリケーション

- リア・カメラ
- 処理なしのカメラ・モジュール
- 車載温度カメラ



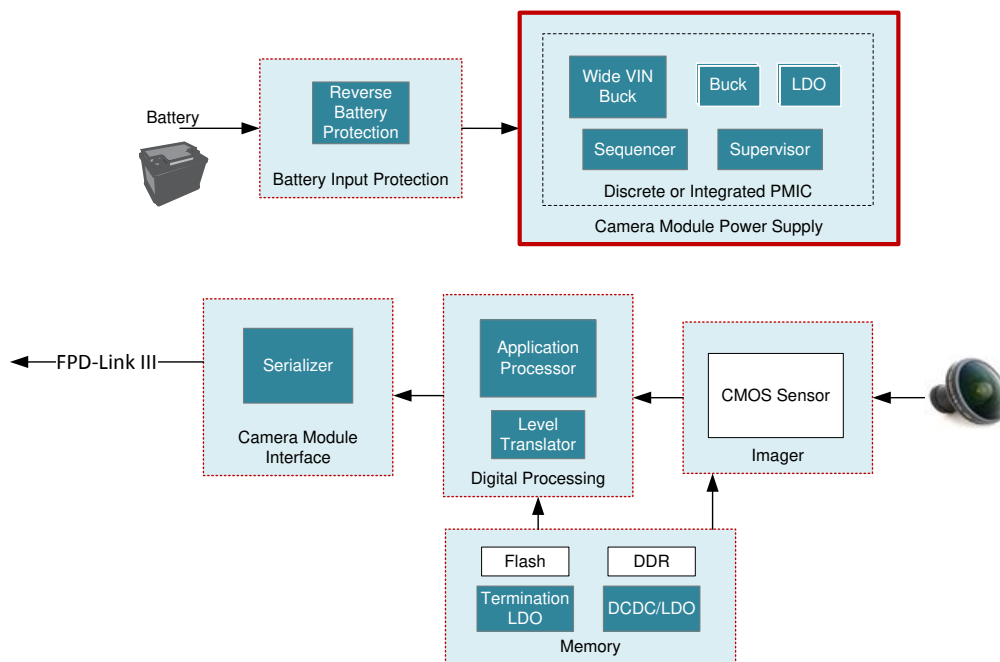


使用許可、知的財産、その他免責事項は、最終ページにあるIMPORTANT NOTICE (重要な注意事項)をご参照くださいますようお願いいたします。

1 System Description

The TIDA-050015 power-supply design is optimized for size-sensitive automotive applications, specifically rear camera modules. The block diagram for a rear camera module is shown in [Figure 1](#), and the TIDA-050015 reference design highlights the camera module power supply highlighted below in red. This design has complete front-end protection and correspondingly accepts a wide input range from 3.8 V to 36 V. This design includes an electromagnetic interference (EMI) filter and is tested to CISPR 25 Class 5 conducted EMI standards without the use of additional shielding.

Figure 1. ADAS Rear Camera Module Block Diagram



The design is divided into four major blocks:

1. Front-end protection: Front-end protection has been implemented against positive and negative pulses (ISO7630 Pulse 1, 2a, 3a/b) through transient voltage suppression (TVS). A PMOSFET is responsible for implementing reverse battery protection.
2. EMI filter: The design uses a differential EMI filter for conducted EMI suppression. The design is tested to CISPR25 Class 5 conducted EMI standards without using any shielding or common-mode filters.
3. Low EMI front-end DC/DC converter: The design uses the LMR33630-Q1 as the front-end DC/DC converter, which is an automotive-qualified, low EMI, 2.1-MHz switching frequency, 3-A synchronous buck regulator. The device comes in an automotive-qualified HotRod™ QFN package with wettable flanks, which reduces parasitic inductance and resistance while increasing efficiency, minimizing switch node ringing, and dramatically lowering EMI. For lower power applications, the LMR34215-Q1 (1.5A) and LMR34206-Q1 (0.6A) offers a pin-to-pin capability that features fixed output voltages, spread spectrum, and forced PWM.
4. Point-of-load converters: The design uses LM2775-Q1, TPS62420-Q1, and LP5907-Q1 to provide regulated voltage for system components like the CMOS imager, CAN, high-speed serial interface, micro controllers or image signal processors. All three components enable a size-optimized, low-noise solution, which is designed to pass CISPR 25 class 5 limits.

1.1 Key System Specifications

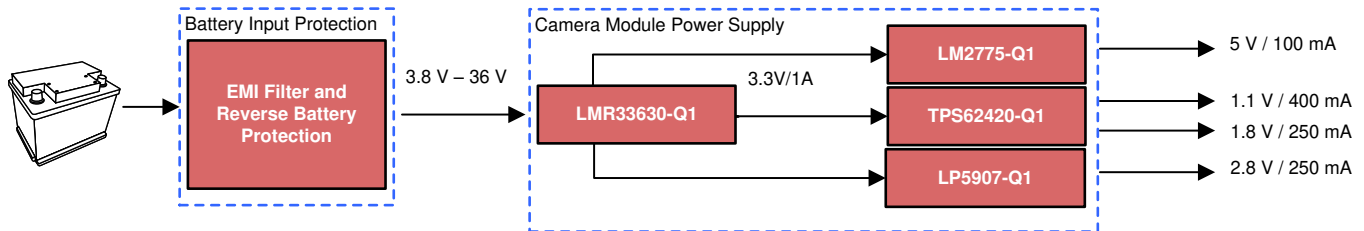
表 1. Key System Specifications

PARAMETER	SPECIFICATIONS
V_{IN} minimum	3.8 V
V_{IN} maximum	36 V
V_{OUT1}	3.3 V
I_{OUT1}	1 A
V_{OUT2}	5 V
I_{OUT2}	100 mA
V_{OUT3}	1.1 V
I_{OUT3}	400 mA
V_{OUT4}	1.8 V
I_{OUT4}	250 mA
V_{OUT5}	2.8 V
I_{OUT5}	250 mA
f_{SW}	2.1 MHz
ISO pulse test	TVS diode used for protection
EMI	Passes CISPR 25 Class 5 limits

2 System Overview

2.1 Block Diagram

図 2. TIDA-050015 Block Diagram



2.2 Design Considerations

The TIDA-050015 reference design is the power management subsystem designed specifically for ADAS camera module applications. This reference design uses a wide V_{IN} converter (LMR33630-Q1) and three point-of-load converters (LM2775-Q1, TPS62420-Q1, LP5907-Q1) with optimized switching frequencies, thermal performance, and form factor.

This camera module power supply has multiple protections at the front-end of the design.

- The TVS functions to clamp both positive and negative transient voltage pulses. These pulses included clamped load dump (up to 38 V) and other transients outlined in ISO 7637-2:2004.
- The PFET is used in the front end so that the system properly responds to a reverse battery polarity event and shuts down appropriately.

A front-end EMI filter enables compliance with the CISPR 25 class 5 automotive EMI standards, with respect to conducted emissions.

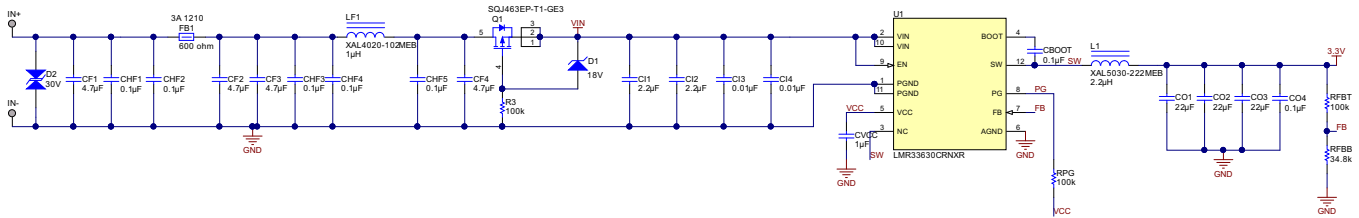
The LMR33630-Q1 synchronous buck converter is a wide-input-voltage, low-quiescent-current, high-performance regulator with internal compensation. The LMR33630-Q1 was chosen as the front-end, wide VIN converter for the TIDA-050015 because of small package size (3 mm × 2 mm), the switching frequency, the 3-A current capability, and the input voltage range of the regulator. The operating frequency for the LMR33630-Q1 regulator is 2.1 MHz, and the device implements a precise current limit. Consequently, the output filter size and component values are minimized. The device is designed with a flip-chip or HotRod technology, which greatly reduces the parasitic inductance of the pins. In addition, the layout of the device can help reduce the radiated noise generated by switching action through the partial cancellation of the current-generated magnetic field.

The 3.3-V output option for the LMR33630-Q1 was chosen to support cold crank conditions. When the engine cranks at low ambient temperature, a car battery voltage can drop to 4 V. This behavior is referred to as cold crank. With a 3.3-V output, the power supply must output a constant voltage rail as the battery voltage drops and ramps to a nominal voltage of 12 V to 13.5 V.

The LMR336xx family of devices offer flexibility to use this size-optimized layout for various power demands of additional automotive applications. For TIDA-050015, the LMR33630-Q1 output voltage is set to 3.3 V with a resistor divider from FB to V_{OUT} . Depending on the power requirement of the downstream components, the output voltage can be adjusted. In addition, the output current can be scaled down to 2 A with the use of the LMR33620-Q1. The LMR33620-Q1 uses a lower current limit and consequently enables the capability to shrink the inductor size.

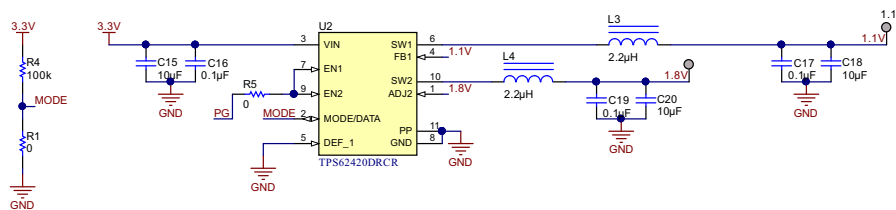
For lower current applications, the output current can be scaled down to 1.5 A or 600mA with the use of pin compatible devices, LMR34215-Q1 (42 V, 1.5 A) and LMR34206-Q1 (42 V, 600 mA). The LMR342xx-Q1 device family offers key features such as fixed output voltages, spread spectrum, and forced PWM. Fixed output voltages removes the need for external resistor devices that can cause inaccuracies. Spread spectrum eliminates peak emissions by spreading the emissions across a wider range of frequencies which will help pass stringent automotive EMI standards. For higher voltage variants, the LMR36006-Q1 (60 V, 600 mA) and LMR36015-Q1 (60 V, 1.5 A) are pin compatible devices with the same features .

図 3. Schematic of LMR33630-Q1



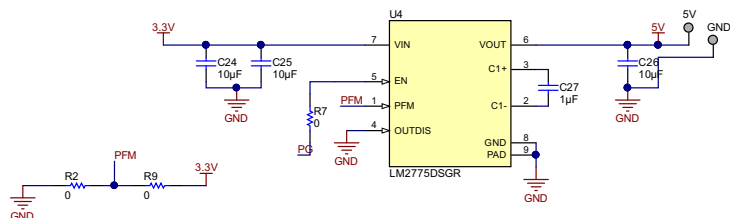
The TPS62420-Q1 is a dual-channel, step-down converter that can operate from a standard 3.3-V input rail and regulate dual output rails at 1.8-V and 1.1-V. The 1.8-V output rail powers both the FPD-Link III serializer and the imager IO rails while the 1.1-V rail powers the imager core voltage rail. The TPS62420-Q1 was chosen as one point-of-load converter for the TIDA-050015 because of the small package (3 mm x 3 mm), the switching frequency, the 600-mA current capability, and the input voltage range of the regulator. The operating frequency of the TPS6240-Q1 is a fixed 2.25-MHz switching frequency. At low output currents, the TPS62420-Q1 reduces its quiescent current by operating in pulse frequency modulation (PFM).

図 4. Schematic of TPS62520-Q1



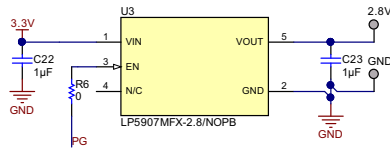
The LM2775-Q1 is a 5-V boost converter capable of powering the CAN communication. The LM2775-Q1 is a switch-capacitor boost converter that enables a small and cost optimized solution by eliminating the need for an inductor. In addition the LM2775-Q1 is selected as one of the point-of-load converters for the TIDA-050015 because of its switch-capacitor topology small package (2 mm x 2 mm), the switching frequency, and the 200-mA current capability. The operating frequency of the LM2775-Q1 is 2-MHz switching frequency. At low output currents, the LM2775-Q1 reduces its quiescent current by operating in PFM.

図 5. Schematic of LM2775-Q1



The LP5907-Q1 is a ultra-low-noise, low- I_Q device that powers the analog rail or pixel rail of the imager. The LP5907-Q1 is selected as one of the point-of-load converters for the TIDA-050015 because of the small package (0.675 mm × 0.675 mm) and low component count solution, which requires two external components. Ultimately, the LP5907-Q1 enables an ultra-small solution with good noise performance.

図 6. Schematic of LP5907-Q1



For design calculations and layout examples, see the data sheets for the relevant devices:

- LMR33630-Q1: [LMR33630-Q1 3.8-V to 36-V, 3-A Synchronous Step-Down Voltage Converter](#)
- TPS62420-Q1: [2.25-MHz 600-mA/1000-mA Dual Step-Down Converter](#)
- LM2775-Q1: [LM2775-Q1 Switched Capacitor 5-V Boost Converter](#)
- LP5907-Q1: [LP5907-Q1 Automotive 250-mA, Ultra-Low-Noise, Low- \$I_Q\$ LDO](#)

2.3 Highlighted Products

2.3.1 LMR33630-Q1

Features:

- Synchronous buck converter
- Wide operation input voltage: 3.8 V to 36 V (with transient protection up to 38 V)
- 2.1-MHz switching frequency
- Low quiescent current: 25 μ A
- Maximum load current: 2 A for LMR33620-Q1 and 3 A for LMR33630-Q1
- QFN package: 3 mm × 2 mm
- Pin-to-pin capability with LMR34215-Q1 (42 V, 1.5 A) and LMR34206-Q1 (42 V, 600 mA)

2.3.2 LM2775-Q1

Features:

- Synchronous boost converter
- Fixed 5-V output
- Inductorless solution: Only requires 3 small ceramic capacitors
- 2.7-V to 5.5-V input range
- 2-MHz switching frequency
- Maximum load current: 200 mA
- QFN package: 2 mm × 2 mm

2.3.3 TPS62420-Q1

Features:

- Synchronous buck converter

- Adjustable output voltage from 0.6 V to V_{IN}
- 2.5-V to 6-V input range
- 2.25-MHz switching frequency
- Maximum load current: 1000 mA
- QFN package: 3 mm × 3 mm

2.3.4 LP5907-Q1

Features:

- Solution requires 1- μ F ceramic input and output capacitors
- Adjustable output voltage from 1.2 V to 4.5 V
- 2.2-V to 5.5-V input range
- Low quiescent current: 12 μ A
- QFN package: 2.96 mm × 1.60 mm

3 Hardware, Software, Testing Requirements, and Test Results

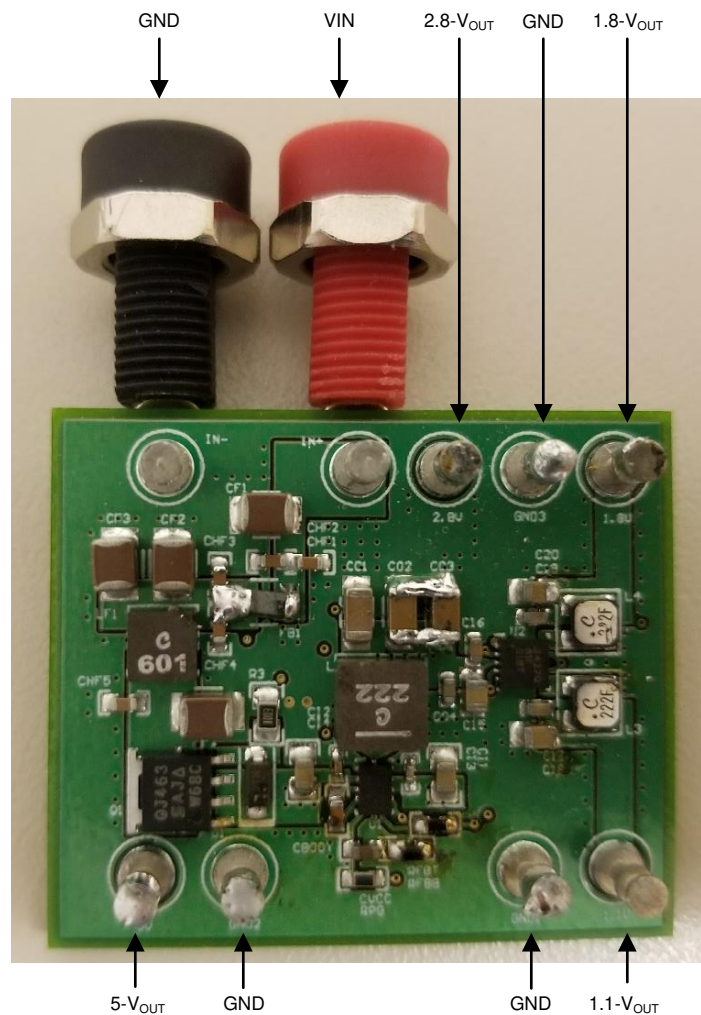
3.1 Required Hardware

3.1.1 Hardware

The following steps outline the hardware setup.

1. Connect a DC power supply to VIN and GND, as labeled in [Figure 7](#).
2. Connect electronic or resistive load to the four output posts (2.8-V_{OUT}, 1.8-V_{OUT}, 5-V_{OUT}, 1.1-V_{OUT}), as labeled in [Figure 7](#).

Figure 7. Hardware Setup



3.2 Testing and Results

3.2.1 Test Set Up

For the following test results the TIDA-050015 was set up as detailed in 3.1.1.

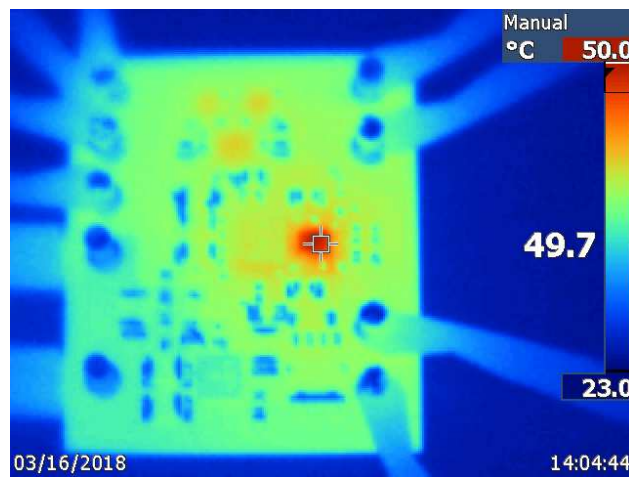
3.2.2 Test Results

The following diagrams show the design performance.

3.2.2.1 Thermal Data

The infrared (IR) thermal image in 8 was taken at steady-state with $V_{IN} = 12V$ and the TPS62821 output at a full load (no airflow). The ambient temperature is approximately 22°C. The maximum IC temperature is 47°C.

8. TIDA-050015 Thermal Image: $V_{IN} = 12 V$, $I_{OUT1} = 1 A$, $V_{OUT1} = 3.3 V$, $V_{OUT2} = 5 V$, $I_{OUT2} = 100 mA$, $V_{OUT3} = 1.1 V$, $I_{OUT3} = 400 mA$, $V_{OUT4} = 1.8 V$, $I_{OUT4} = 250 mA$, $V_{OUT5} = 2.8 V$, $I_{OUT5} = 250 mA$



3.2.2.2 Efficiency Data

9 shows the efficiency of the LMR33630-Q1 device versus the load current. 10 shows the total system efficiency versus the input voltage at full load.

図 9. LMR33630-Q1 Efficiency Versus Load Current: $I_{OUT1} = 0 \text{ A}$ to 3 A (Includes Front End Protection and EMI Filter)

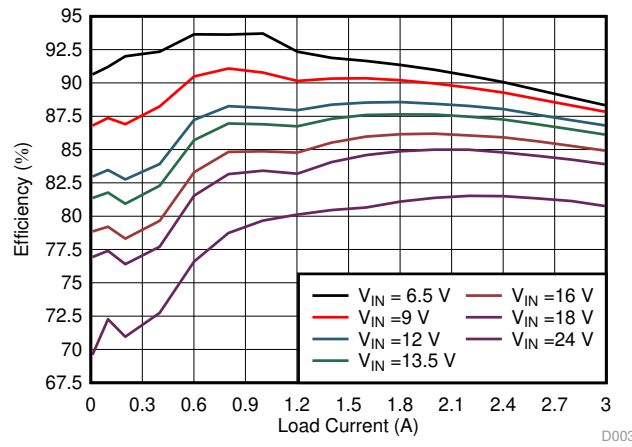
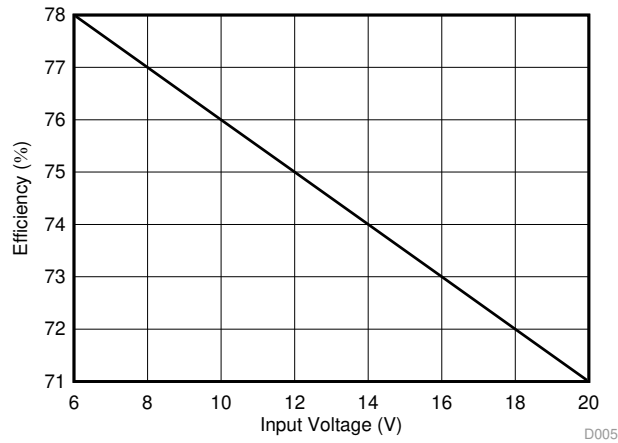


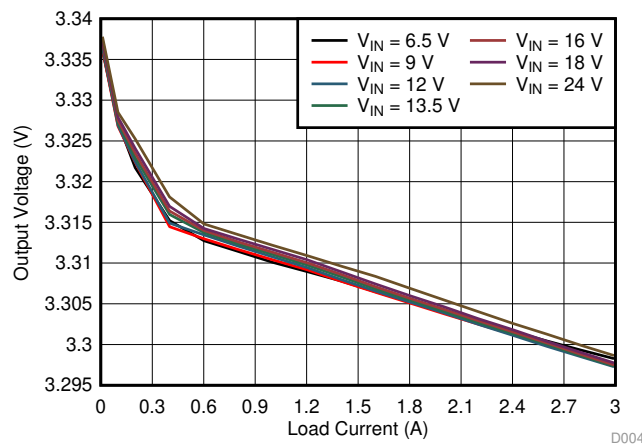
図 10. System Efficiency vs Input Voltage: $I_{OUT1} = 1 \text{ A}$, $I_{OUT2} = 100 \text{ mA}$, $I_{OUT3} = 400 \text{ mA}$, $I_{OUT4} = 250 \text{ mA}$, $I_{OUT2} = 250 \text{ mA}$



3.2.2.3 Output Load Regulation

図 11 shows the output load regulation of the wide input converter (LMR33630-Q1).

図 11. LMR33630-Q1 Load Regulation: V_{OUT1} vs I_{OUT1}



3.2.2.4 Reverse Battery Protection

This design has implemented protection against a reverse battery connection. [Figure 12](#) and [Figure 13](#) show this performance.

Figure 12. Continuous Reverse Voltage at Input - C1: V_{IN} (Input for DC/DC Converter), C3: Input (Input Terminal for Battery)

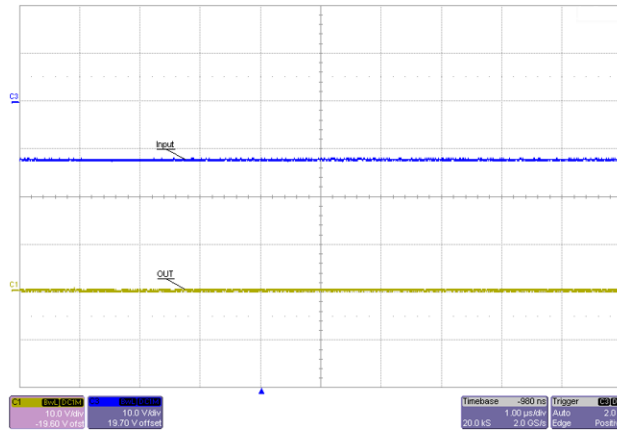
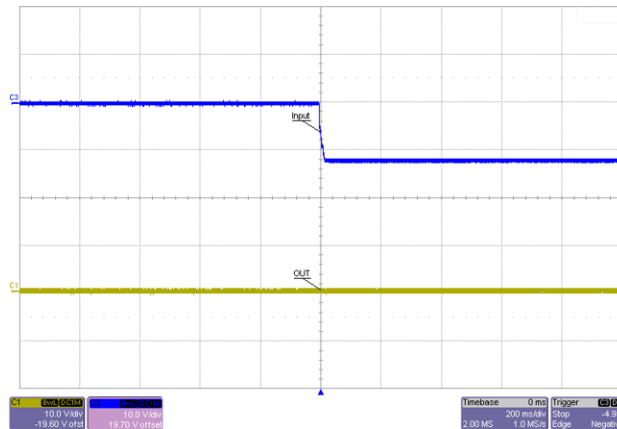


Figure 13. Transition to Reverse Voltage at Input - C1: V_{IN} (Input for DC/DC Converter), C3: Input (Input Terminal for Battery)



3.2.2.5 Switch Node and Output Voltage Ripple

Figure 14 shows the steady-state performance of LMR33630-Q1 for the switch-node and output voltage ripple at 12 V_{IN} and full load. Figure 15 shows the steady-state performance of TPS62420-Q1 for the switch-node and output voltage ripple at 12 V_{IN}, 1.8 V_{OUT}, and full load. Figure 16 shows the steady-state performance of TPS62420-Q1 for the switch-node and output voltage ripple at 12 V_{IN}, 1.1 V_{OUT}, and full load.

Figure 14. LMR33630-Q1 Steady-State Waveform at 12 V_{IN} and Full Load - C1: 3.3-V_{OUT} (AC Coupled), Ch3: Switch Node

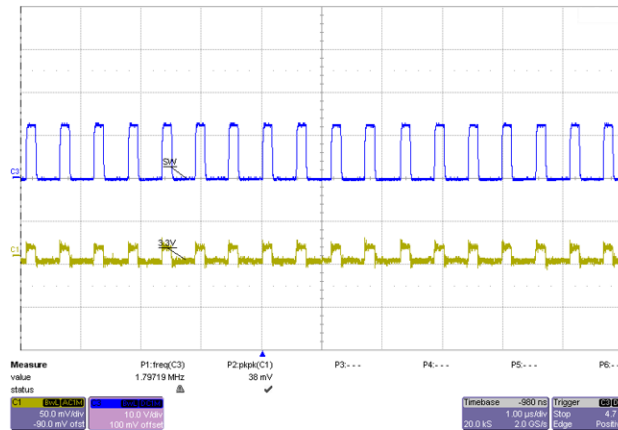


Figure 15. TPS62420-Q1 Steady-State Waveform at 12 V_{IN} and Full Load - C1: 1.8 V_{OUT} (AC Coupled), Ch3: Switch Node

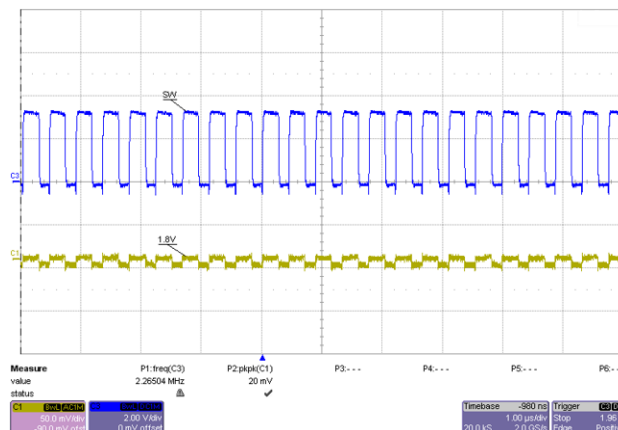
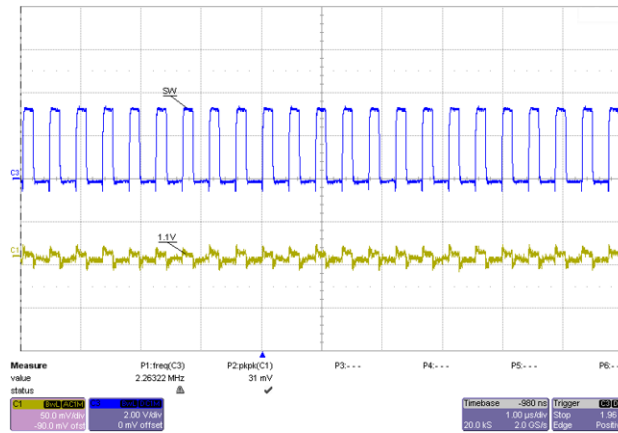


図 16. TPS62420-Q1 Steady-State Waveform at 12 V_{IN} and Full Load - C1: 1.1 V_{OUT} (AC Coupled), Ch3: Switch Node



3.2.2.6 Load Transient

The load transient waveform monitor the output voltage and the load current. Channel 1 (yellow) represents the output current of the LMR33630-Q1 or TPS62420-Q1. Channel 3 (blue) represents the output current. 図 17 to 図 20 show the load transient results.

図 17. LMR33630-Q1 Load Transient: 12 V_{IN}, I_{OUT1} = 0.4 A to 3 A, t_r = t_f = 5 μs - C1: 3.3 V_{OUT} (AC Coupled), Ch3: I_{OUT1}

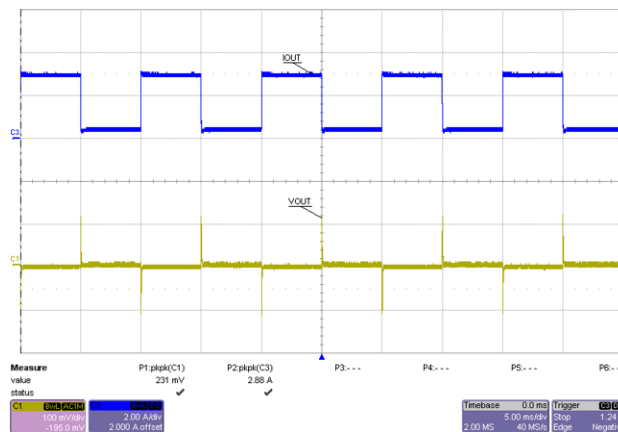


図 18. PS62420-Q1 Load Transient: 12 V_{IN}, I_{OUT2} = 0.1 A to 0.4 A, t_r = t_f = 3 μs - C1: 1.8 V_{OUT} (AC Coupled), Ch3: I_{OUT2}

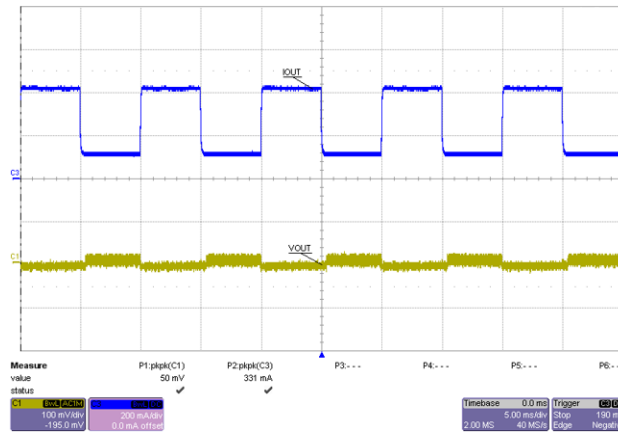


図 19. TPS62420-Q1 Load Transient: 12 V_{IN}, I_{OUT3} = 0.2 A to 0.8 A, t_r = t_f = 6 μs - C1: 1.1 V_{OUT} (AC Coupled), Ch3: I_{OUT3}

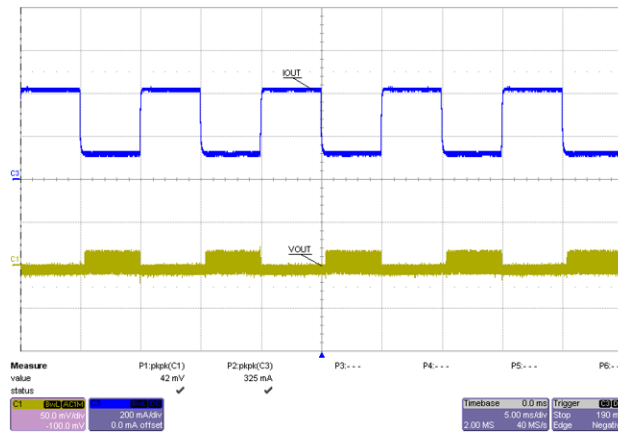
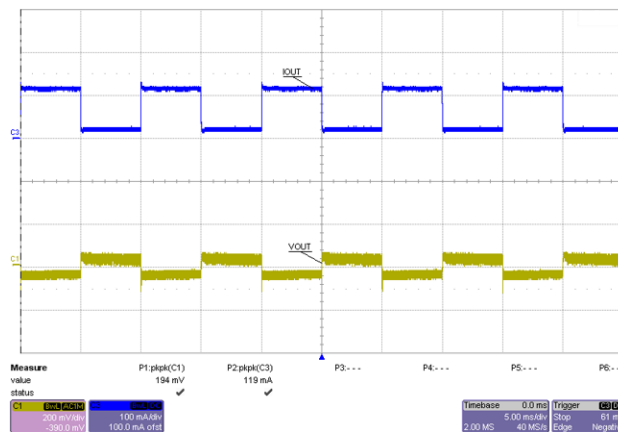


図 20. LM2775-Q1 Load Transient: 12 V_{IN}, I_{OUT4} = 0.01 A to 0.1 A, t_r = t_f = 1 μs - C1: 5 V_{OUT} (AC Coupled), Ch3: I_{OUT2}



3.2.2.7 Conducted Emissions

Figure 21 and Figure 22 show the conducted emissions plots based on the CISPR 25 class 5 standards. The input voltage is 12 V, and all outputs are at full load.

Figure 21. EMI Performance From 150 kHz to 30 MHz: $V_{IN} = 12\text{ V}$
 (Yellow: Peak Detection Result; Blue: Average Detection Result; Red: CISPR 25 Class 5 Limits)

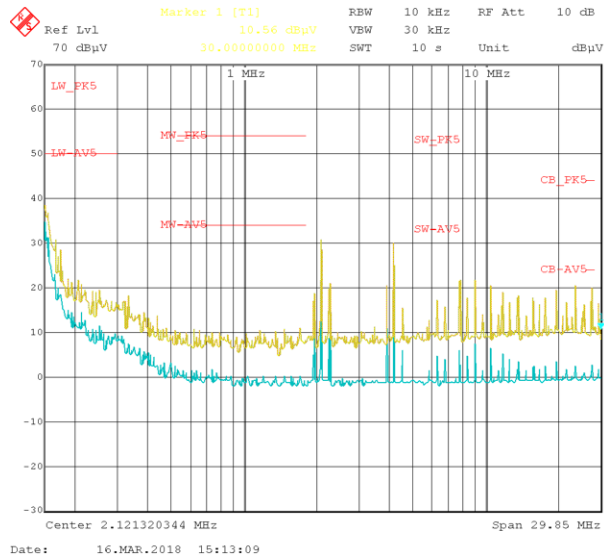
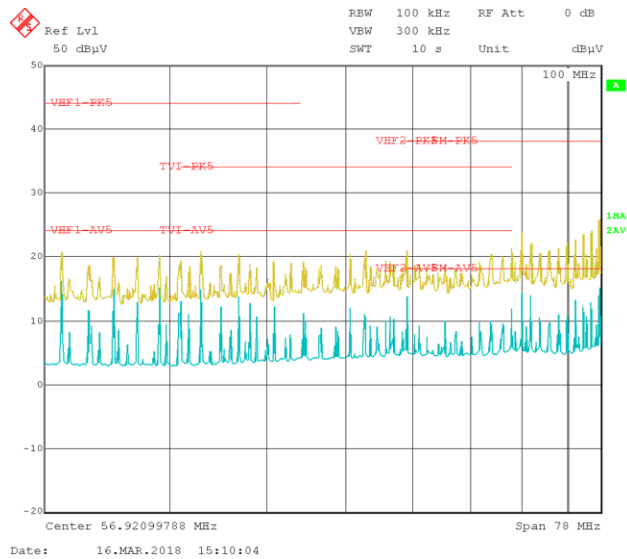


Figure 22. EMI Performance From 30 MHz to 108 MHz: $V_{IN} = 12\text{ V}$
 (Yellow: Peak Detection Result; Blue: Average Detection Result; Red: CISPR 25 Class 5 Limits)



4 Design Files

4.1 Schematics

To download the schematics, see the design files at [TIDA-050015](#).

4.2 Bill of Materials

To download the bill of materials (BOM), see the design files at [TIDA-050015](#).

4.3 PCB Layout Recommendations

4.3.1 Layout Prints

To download the layer plots, see the design files at [TIDA-050015](#).

4.4 Altium Project

To download the Altium Designer® project files, see the design files at [TIDA-050015](#).

4.5 Gerber Files

To download the Gerber files, see the design files at [TIDA-050015](#).

4.6 Assembly Drawings

To download the assembly drawings, see the design files at [TIDA-050015](#).

5 Software Files

To download the software files, see the design files at [TIDA-050015](#).

5.1 商標

E2E, HotRod are trademarks of Texas Instruments.
Altium Designer is a registered trademark of Altium LLC or its affiliated companies.
すべての商標および登録商標はそれぞれの所有者に帰属します。

6 Related Documentation

1. Texas Instruments, [LMR33630-Q1 3.8-V to 36-V, 3-A Synchronous step-down voltage converter](#)
2. Texas Instruments: [2.25-MHz 600-mA/1000-mA Dual step-down converter \(TPS62420-Q1\)](#)
3. Texas Instruments, [LM2775-Q1 Switched capacitor 5-V boost converter](#)
4. Texas Instruments, [LP5907-Q1 Automotive 250-mA, ultra-low-noise, low- \$I_Q\$ LDO](#)

6.1 商標

E2E, HotRod are trademarks of Texas Instruments.
Altium Designer is a registered trademark of Altium LLC or its affiliated companies.

6.2 Third-Party Products Disclaimer

TI'S PUBLICATION OF INFORMATION REGARDING THIRD-PARTY PRODUCTS OR SERVICES DOES NOT CONSTITUTE AN ENDORSEMENT REGARDING THE SUITABILITY OF SUCH PRODUCTS OR SERVICES OR A WARRANTY, REPRESENTATION OR ENDORSEMENT OF SUCH PRODUCTS OR SERVICES, EITHER ALONE OR IN COMBINATION WITH ANY TI PRODUCT OR SERVICE.

改訂履歴

資料番号末尾の英字は改訂を表しています。その改訂履歴は英語版に準じています。

2019年2月発行のものから更新

Page

• LMR34215-Q1 プロダクト・フォルダ 追加	1
• "For lower power applications, the LMR34215-Q1 (1.5A) and LMR34206-Q1 (0.6A) offers a pin-to-pin capability that features fixed output voltages, spread spectrum, and forced PWM." 追加	2
• "For lower current applications, the output current can be scaled down to 1.5 A or 600mA with the use of pin compatible devices, LMR34215-Q1 (42 V, 1.5 A) and LMR34206-Q1 (42 V, 600 mA). The LMR342xx-Q1 device family offers key features such as fixed output voltages, spread spectrum, and forced PWM. Fixed output voltages removes the need for external resistor devices that can cause inaccuracies. Spread spectrum eliminates peak emissions by spreading the emissions across a wider range of frequencies which will help pass stringent automotive EMI standards. For higher voltage variants, the LMR36006-Q1 (60 V, 600 mA) and LMR36015-Q1 (60 V, 1.5 A) are pin compatible devices with the same features ." 追加	5
• "Pin-to-pin capability with LMR34215-Q1 (42 V, 1.5 A) and LMR34206-Q1 (42 V, 600 mA)" 追加	6

重要なお知らせと免責事項

TI は、技術データと信頼性データ(データシートを含みます)、設計リソース(リファレンス・デザインを含みます)、アプリケーションや設計に関する各種アドバイス、Web ツール、安全性情報、その他のリソースを、欠陥が存在する可能性のある「現状のまま」提供しており、商品性および特定目的に対する適合性の黙示保証、第三者の知的財産権の非侵害保証を含むいかなる保証も、明示的または黙示的にかかわらず拒否します。

これらのリソースは、TI 製品を使用する設計の経験を積んだ開発者への提供を意図したものです。(1) お客様のアプリケーションに適した TI 製品の選定、(2) お客様のアプリケーションの設計、検証、試験、(3) お客様のアプリケーションに該当する各種規格や、その他のあらゆる安全性、セキュリティ、規制、または他の要件への確実な適合に関する責任を、お客様のみが単独で負うものとし、

上記の各種リソースは、予告なく変更される可能性があります。これらのリソースは、リソースで説明されている TI 製品を使用するアプリケーションの開発の目的でのみ、TI はその使用をお客様に許諾します。これらのリソースに関して、他の目的で複製することや掲載することは禁止されています。TI や第三者の知的財産権のライセンスが付与されている訳ではありません。お客様は、これらのリソースを自身で使用した結果発生するあらゆる申し立て、損害、費用、損失、責任について、TI およびその代理人を完全に補償するものとし、TI は一切の責任を拒否します。

TI の製品は、[TI の販売条件](#)、または [ti.com](https://www.ti.com) やかかる TI 製品の関連資料などのいずれかを通じて提供する適用可能な条項の下で提供されています。TI がこれらのリソースを提供することは、適用される TI の保証または他の保証の放棄の拡大や変更を意味するものではありません。

お客様がいかなる追加条項または代替条項を提案した場合でも、TI はそれらに異議を唱え、拒否します。

郵送先住所 : Texas Instruments, Post Office Box 655303, Dallas, Texas 75265

Copyright © 2022, Texas Instruments Incorporated