

User's Guide

TPS25850-Q1 Evaluation Module



ABSTRACT

This user's guide describes the TPS25850-Q1 evaluation module (TPS25850Q1EVM-088). This document contains the EVM schematics, EVM configuration, bill of materials (BOM), board layout drawing, and assembly drawing.

Table of Contents

| | |
|--|----|
| 1 Introduction | 2 |
| 1.1 Features..... | 2 |
| 1.2 Applications..... | 2 |
| 2 Schematic | 3 |
| 3 General Configuration and Description | 4 |
| 3.1 Physical Access..... | 4 |
| 3.2 Adjusting the Switching Frequency..... | 4 |
| 3.3 Adjusting the Current Limit Value..... | 4 |
| 3.4 Adjusting the Cable Compensation Value..... | 5 |
| 3.5 Thermal Management..... | 5 |
| 3.6 Test Setup..... | 5 |
| 4 Board Layout | 6 |
| 5 Bill of Materials | 10 |
| 6 Revision History | 12 |

List of Figures

| | |
|--|---|
| Figure 2-1. TPS25850Q1EVM-088 Schematic..... | 3 |
| Figure 3-1. EVM Setup for Charging USB Type-C™ Device..... | 5 |
| Figure 4-1. Top Side Assembly..... | 6 |
| Figure 4-2. Bottom Side Assembly..... | 6 |
| Figure 4-3. | 6 |
| Figure 4-4. Top Side 3D View..... | 7 |
| Figure 4-5. Bottom Side 3D View..... | 7 |
| Figure 4-6. Top Layer Layout..... | 8 |
| Figure 4-7. Mid-1 Layer Layout..... | 8 |
| Figure 4-8. Mid-2 Layer Layout..... | 9 |
| Figure 4-9. Bottom Layer Layout..... | 9 |

List of Tables

| | |
|---|----|
| Table 3-1. Connectors..... | 4 |
| Table 3-2. Jumper..... | 4 |
| Table 3-3. Test Points..... | 4 |
| Table 5-1. TPS25850Q1EVM-088 Bill of Materials..... | 10 |

Trademarks

USB Type-C™ is a trademark of USB Implementers Forum.
All other trademarks are the property of their respective owners.

1 Introduction

The TPS25850Q1EVM-088 is an evaluation module (EVM) for TI's TPS25850-Q1 USB Type-C™ and BC1.2 dual type-C ports which is capable of providing up to 6.6-A output current, 3 A for each port with cable compensation. The EVM operates over a range from 5.5 V to 26 V and withstands 40-V transient voltage. The value of cable compensation, current limit, output voltage and switching frequency can be adjusted by resistors on the EVM.

1.1 Features

The following features are available on this EVM:

- 5.5-V to 26-V input range, 3-A continuous output current buck converter for each port
- 200-mA capability for OUT pin, 200-mA capability for VCONN power meeting for USB3.1 power requirement
- Forced PWM operation with Spread-Spectrum Dithering at 200 kHz –2.4 MHz
- Fully AEC-Q100 qualified
- Programmable output short current limit: ±15% accuracy overtemperature
- Smart thermal management
- USB battery charging specification Rev. 1.2 DCP mode, divider3 mode, Samsung 1.2 V mode, and USB Type-C Rev. 1.3 compliant
- User-programmable VBUS current limit and internal VCONN current limiting

1.2 Applications

The EVM is used in the following applications:

- Automotive: USB media hubs, USB charging ports, aftermarket Dual USB chargers

2 Schematic

Figure 2-1 illustrates the TPS25850Q1EVM-088 schematic.

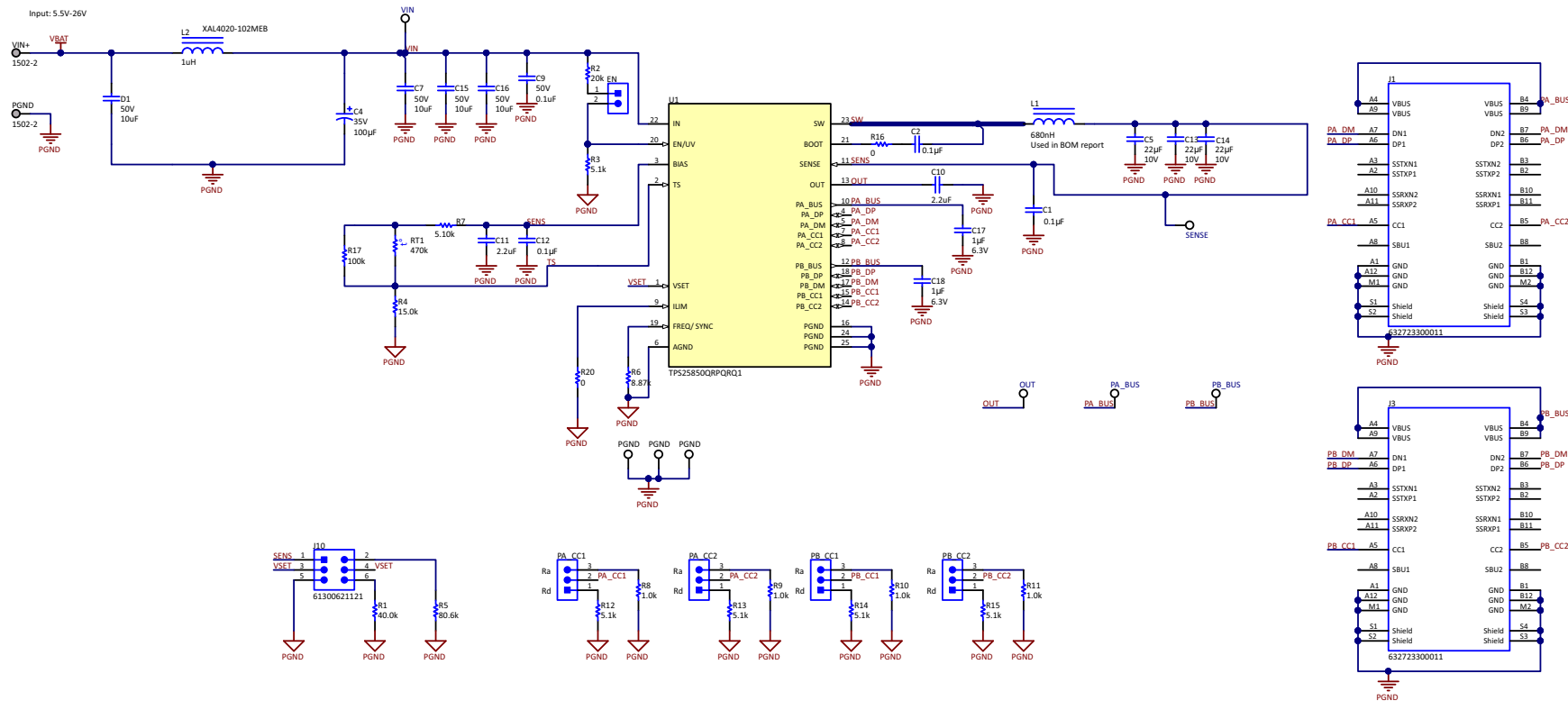


Figure 2-1. TPS25850Q1EVM-088 Schematic

3 General Configuration and Description

This section describes the connectors, jumpers, and test points on the EVM and how to properly connect, set up, and use the TPS25850Q1EVM-088.

3.1 Physical Access

Table 3-1 lists the TPS25850Q1EVM-088 connector functionality, Table 3-2 describes the jumper configuration, and Table 3-3 describes the test point availability.

Table 3-1. Connectors

| Connector | Component Type | Description |
|------------|----------------------------------|--|
| J1, J3 | USB Type-C connector, receptacle | Downstream facing USB Type-C connector. Connect to the USB Type-C slave for data pass through from PA/B_CC1/2 and BC1.2 or USB Type-C identification. USB output power is provided to the slave from the buck converter of the TPS25850-Q1 device. |
| VIN+, PGND | Terminal block | Power input connector for TPS25850-Q1. Connect to a 5.5-V to 26-V power supply. |

Table 3-2. Jumper

| Jumper | Label | Description |
|--------|-------------------------------|--|
| PA_CC1 | PA_CC1 | 3 × 1 header. Install shunt to connect Ra or Rd on CC1 of port-A. Remove shunt to float CC1. |
| PA_CC2 | PA_CC2 | 3 × 1 header. Install shunt to connect Ra or Rd on CC2 of port-A. Remove shunt to float CC2. |
| PB_CC1 | PB_CC1 | 3 × 1 header. Install shunt to connect Ra or Rd on CC1 of port-B. Remove shunt to float CC1. |
| PB_CC2 | PB_CC2 | 3 × 1 header. Install shunt to connect Ra or Rd on CC2 of port-B. Remove shunt to float CC2. |
| J10 | Buck output voltage selection | 3 × 2 header. Install shunt to pin 1 and pin 3 for 5.1 V, to pin 3 and pin 5 for 5.17 V, to pin 2 and pin 4 for 5.4 V, to pin 4 and pin 6 for 5.3 V. |

Table 3-3. Test Points

| Test Point | Label | Description |
|------------|--------|------------------------------|
| VIN | VIN | VIN pin test point |
| EN | EN | EN pin test point |
| OUT | OUT | OUT pin test point |
| SENSE | SENSE | SENSE pin test point |
| PA_BUS | PA_BUS | BUS pin of Port A test point |
| PB_BUS | PB_BUS | BUS pin of Port B test point |
| PGND | PGND | Power ground pin test point |

3.2 Adjusting the Switching Frequency

If other frequencies are desired, within the frequency range of 200 kHz to 3 MHz, the RFREQ (R6) resistor value can be changed. Consult the data sheet for proper selection of the RFREQ resistor. Change the inductor (L1) and the total output capacitance for proper control-loop operation. The FREQ/SYNC pin can also be used to synchronize the internal oscillator to an external clock. The TPS25850EVMQ1-088 allows users to synchronize the internal oscillator to both Lo-Z clock source and Hi-Z clock source. See the data sheet for detailed information.

3.3 Adjusting the Current Limit Value

If other current limit values are desired, the RILIM resistor value can be changed. Modify the value of R20 can change current limit threshold. Consult the data sheet for proper selection of RILIM.

3.4 Adjusting the Cable Compensation Value

The TPS25850-Q1 needs to short the VSET pin to ground to enable the cable compensation, with that setting, the buck regulator will increase its output voltage linearly as the load current increases, and the voltage compensation at currents of the USB ports greater than 2.4 A is 90 mV.

3.5 Thermal Management

The TS input pin allows for user programmable thermal protection, see Electrical Characteristics for TS pin thresholds. The TS input pin threshold is ratio metric with VSENSE. The external resistor divider setting VTS (R4, R7, and R17) must be connected to the TPS2585x-Q1 SENSE pin to achieve accurate results. See the data sheet for detailed information.

3.6 Test Setup

Figure 3-1 shows a typical test setup for charging the USB Type-C device. Connect VIN+ to the power supply. Connect the USB Type-C device to the J1 and J3 connector.

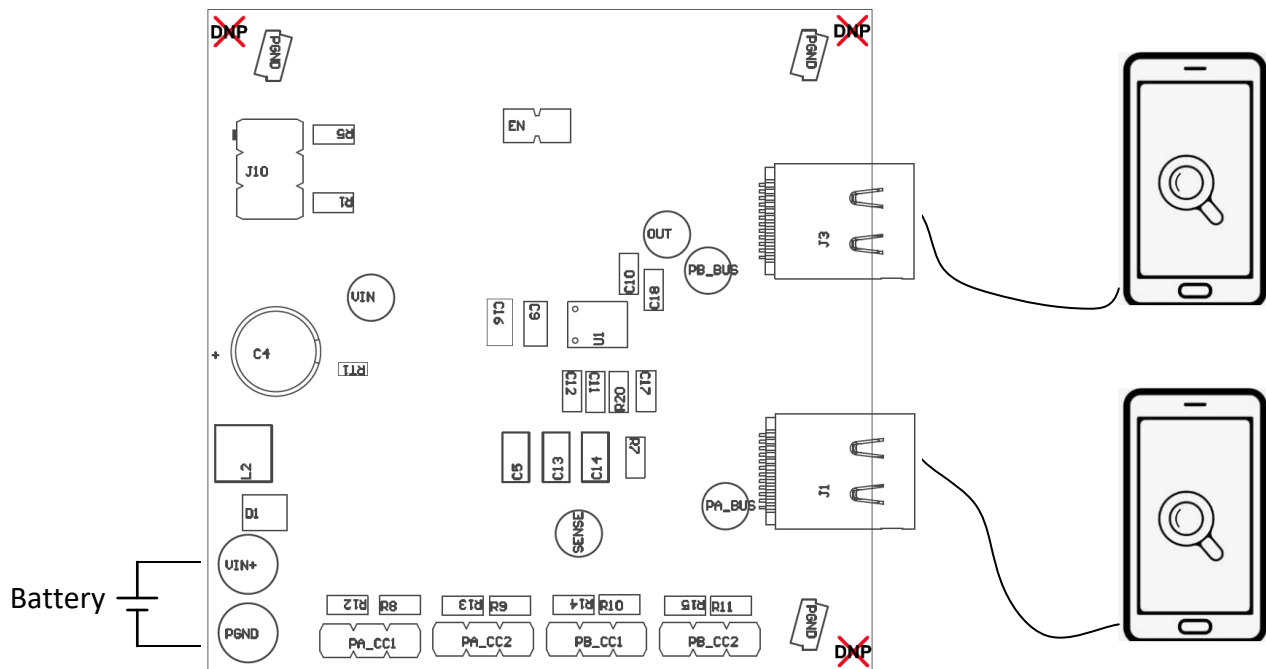


Figure 3-1. EVM Setup for Charging USB Type-C™ Device

4 Board Layout

Figure 4-1 and Figure 4-2 show the top and bottom assembly. Figure 4-4 and Figure 4-5 show the top side and bottom side 3D view. Figure 4-6 through Figure 4-9 show the layout images of the EVM.

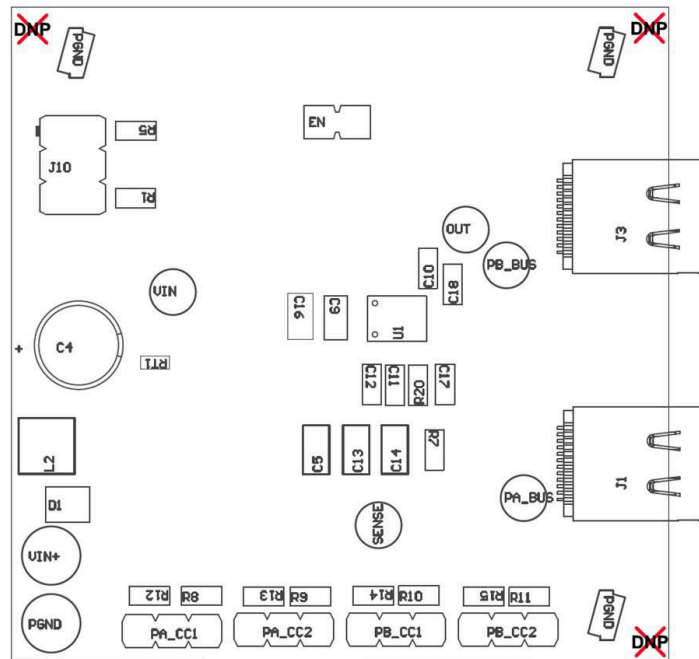


Figure 4-1. Top Side Assembly

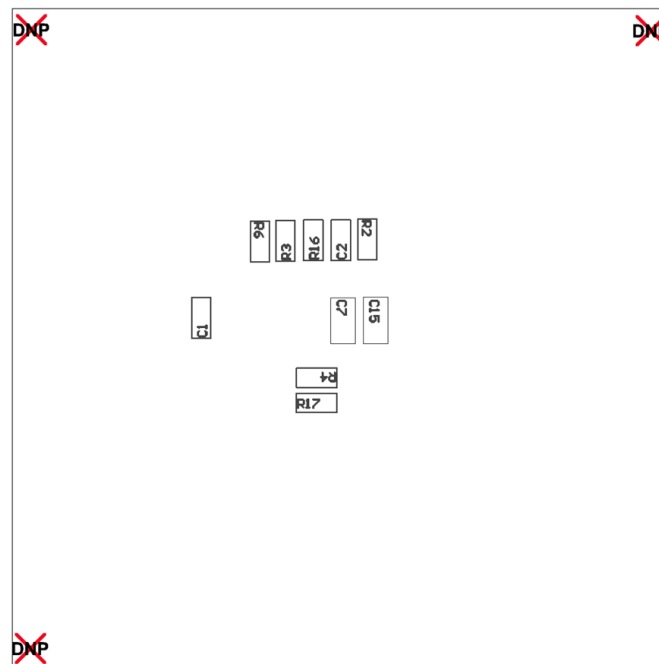


Figure 4-2. Bottom Side Assembly

Figure 4-3.

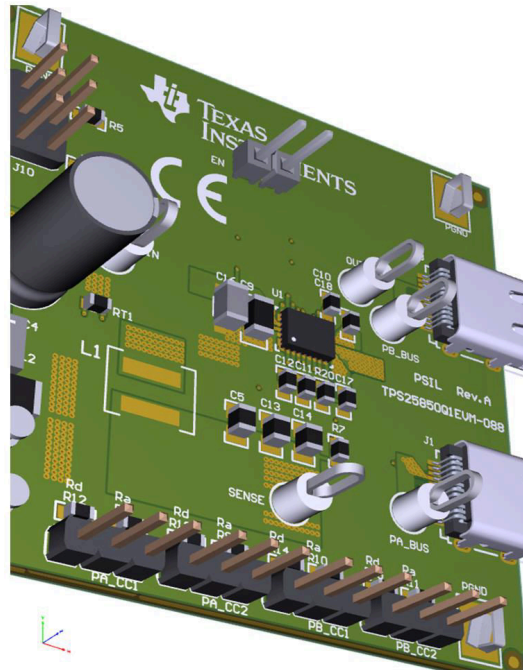


Figure 4-4. Top Side 3D View

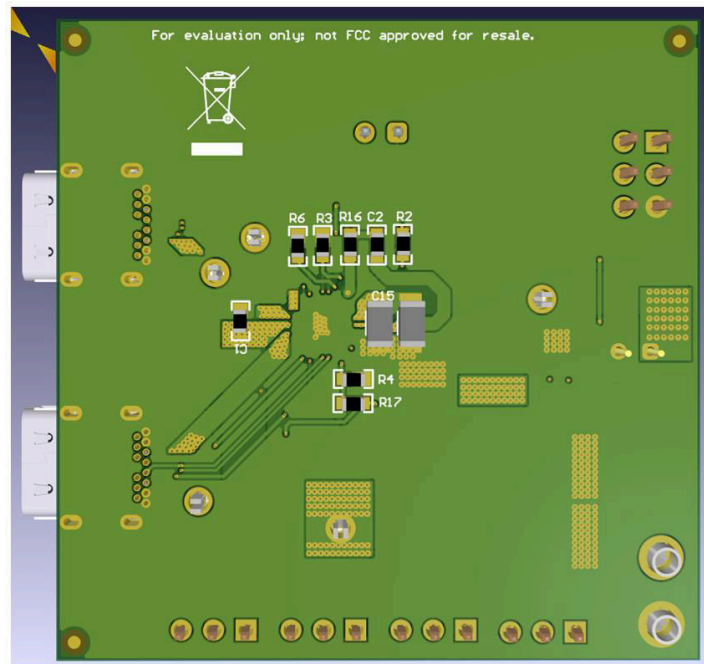


Figure 4-5. Bottom Side 3D View

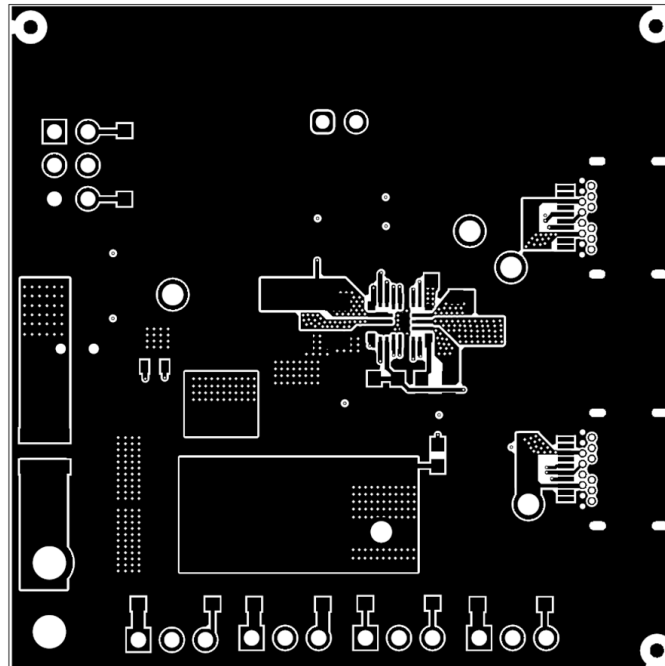


Figure 4-6. Top Layer Layout

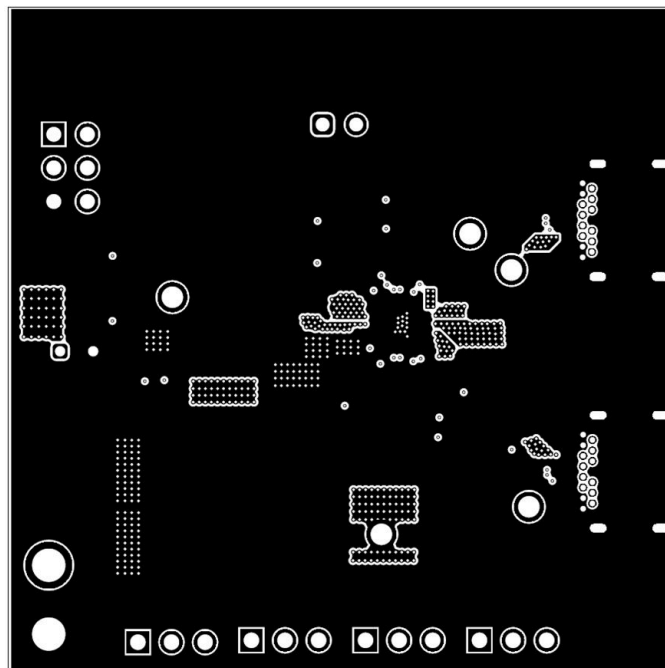


Figure 4-7. Mid-1 Layer Layout

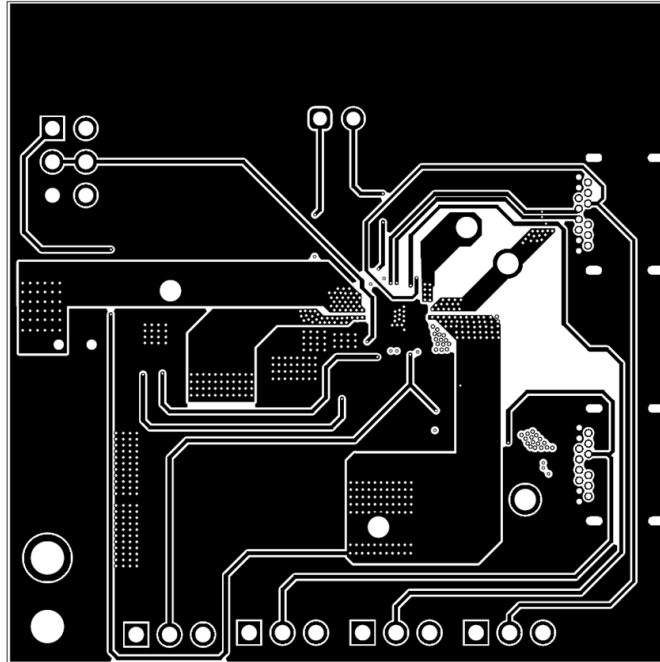


Figure 4-8. Mid-2 Layer Layout

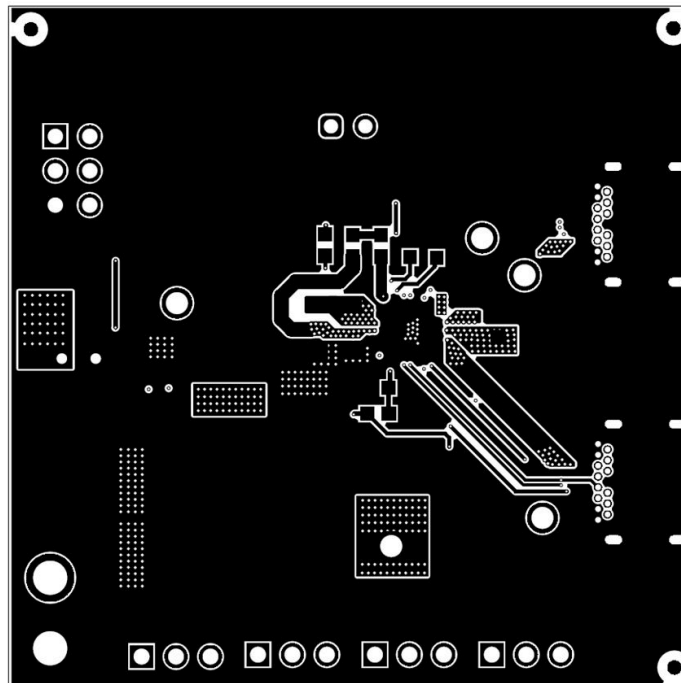


Figure 4-9. Bottom Layer Layout

5 Bill of Materials

Table 5-1 lists the EVM bill of materials

Table 5-1. TPS25850Q1EVM-088 Bill of Materials

| Item # | Designator | QTY | Value | Part Number | Manufacturer | Description | Package Reference |
|--------|---------------------------------|-----|-------|--------------------|---------------------------|--|---|
| 1 | C1, C2, C12 | 3 | 0.1uF | C0603C104K5RACAUTO | Kemet | CAP, CERM, 0.1 μ F, 50 V, \pm 10%, X7R, AEC-Q200 Grade 1, 0603 | 0603 |
| 2 | C4 | 1 | 100uF | 35ZLJ100M6.3X11 | Rubycon | CAP, AL, 100 μ F, 35 V, \pm 20%, TH | D6.3xL11mm |
| 3 | C5, C13, C14 | 3 | 22uF | GRM21BZ71A226ME15L | MuRata | CAP, CERM, 22 μ F, 10 V, \pm 20%, X7R, 0805 | 0805 |
| 4 | C7, C15, C16 | 3 | 10uF | GRT31CR61H106KE01L | MuRata | CAP, CERM, 10 μ F, 50 V, \pm 10%, X5R, AEC-Q200 Grade 1, 1206 | 1206 |
| 5 | C9 | 1 | 0.1uF | 12065C104KAT2A | AVX | CAP, CERM, 0.1 μ F, 50 V, \pm 10%, X7R, 1206 | 1206 |
| 6 | C10, C11 | 2 | 2.2uF | 885012106018 | Würth Elektronik | CAP, CERM, 2.2 μ F, 16 V, \pm 20%, X5R, 0603 | 0603 |
| 7 | C17, C18 | 2 | 1uF | CL10B105KQ8NNNC | Samsung Electro-Mechanics | CAP, CERM, 1 μ F, 6.3 V, \pm 10%, X7R, 0603 | 0603 |
| 8 | D1 | 1 | 10uF | GRM32ER71H106MA12 | MuRata | CAP, CERM, 10 μ F, 50 V, \pm 20%, X7R, 1210 | 1210 |
| 9 | EN | 1 | | TSW-102-07-T-S | Samtec | Header, 2.54 mm, 2x1, Tin, TH | Header, 2.54 mm, 2x1, TH |
| 10 | J1, J3 | 2 | | 632723300011 | Würth Elektronik | Connector, Receptacle, USB Type C, R/A | Connector, Receptacle, USB Type C, R/A, THT/SMT |
| 11 | J10 | 1 | | 61300621121 | Würth Elektronik | Header, 2.54mm, 3x2, Gold, TH | Header, 2.54mm, 3x2, TH |
| 12 | L1 | 1 | | XEL5050-681ME_ | Coilcraft | 680nH | eg: 0603, used in PnP report |
| 13 | L2 | 1 | 1uH | XAL4020-102MEB | Coilcraft | Inductor, Shielded, Composite, 1 μ H, 8.75 A, 0.01 ohm, SMD | 4x2.1x4mm |
| 14 | OUT, PA_BUS, PB_BUS, SENSE, VIN | 5 | | 5012 | Keystone | Test Point, Multipurpose, White, TH | White Multipurpose Testpoint |
| 15 | PA_CC1, PA_CC2, PB_CC1, PB_CC2 | 4 | | 61300311121 | Würth Elektronik | Header, 2.54 mm, 3x1, Gold, TH | Header, 2.54mm, 3x1, TH |
| 16 | PGND | 3 | | 5016 | Keystone | Test Point, Compact, SMT | Testpoint_Keystone_Compact |
| 17 | PGND, VIN+ | 2 | | 1502-2 | Keystone | Terminal, Turret, TH, Double | Keystone1502-2 |
| 18 | R1 | 1 | 40.0k | PAT0603E4002BST1 | Vishay Thin Film | RES, 40.0 k, 0.1%, 0.15 W, AEC-Q200 Grade 0, 0603 | 0603 |
| 19 | R2 | 1 | 20k | CRCW060320K0JNEA | Vishay-Dale | RES, 20 k, 5%, 0.1 W, AEC-Q200 Grade 0, 0603 | 0603 |
| 20 | R3, R12, R13, R14, R15 | 5 | 5.1k | CRCW06035K10JNEA | Vishay-Dale | RES, 5.1 k, 5%, 0.1 W, AEC-Q200 Grade 0, 0603 | 0603 |
| 21 | R4 | 1 | 15.0k | RT0603DRE0715KL | Yageo America | RES, 15.0 k, 0.5%, 0.1 W, 0603 | 0603 |
| 22 | R5 | 1 | 80.6k | RT0603DRE0780K6L | Yageo America | RES, 80.6 k, 0.5%, 0.1 W, 0603 | 0603 |
| 23 | R6 | 1 | 8.87k | CRCW06038K87FKEA | Vishay-Dale | RES, 8.87 k, 1%, 0.1 W, 0603 | 0603 |

Table 5-1. TPS25850Q1EVM-088 Bill of Materials (continued)

| Item # | Designator | QTY | Value | Part Number | Manufacturer | Description | Package Reference |
|--------|------------------------------------|-----|-------|------------------|---------------------------|---|-------------------|
| 24 | R7 | 1 | 5.10k | RC0603FR-075K1L | Yageo America | RES, 5.10 k, 1%, 0.1 W, 0603 | 0603 |
| 25 | R8, R9, R10, R11 | 4 | 1.0k | CRCW06031K00JNEA | Vishay-Dale | RES, 1.0 k, 5%, 0.1 W, AEC-Q200 Grade 0, 0603 | 0603 |
| 26 | R16, R20 | 2 | 0 | RMCF0603ZT0R00 | Stackpole Electronics Inc | RES, 0, 1%, 0.1 W, AEC-Q200 Grade 0, 0603 | 0603 |
| 27 | R17 | 1 | 100k | CRCW0603100KFKEA | Vishay-Dale | RES, 100 k, 1%, 0.1 W, 0603 | 0603 |
| 28 | RT1 | 1 | 470k | NCP18WM474E03RB | MuRata | Thermistor NTC, 470k ohm, 3%, 0603 | 0603 |
| 29 | U1 | 1 | | TPS25850QRPQRQ1 | Texas Instruments | Dual 3A USB Type-C Charging Ports Controller with Programmable Current Limit and Thermal Management, RPQ0025A (VQFN-25) | RPQ0025A |
| 30 | FID1, FID2, FID3, FID4, FID5, FID6 | 0 | | N/A | N/A | Fiducial mark. There is nothing to buy or mount. | N/A |

6 Revision History

NOTE: Page numbers for previous revisions may differ from page numbers in the current version.

| Changes from Revision * (May 2020) to Revision A (September 2020) | Page |
|---|--------------------|
| • Updated the numbering format for tables, figures, and cross-references throughout the document..... | 2 |
| • Changes made throughout to accomodate TPS25850Q1EVM-088 Rev. A..... | 2 |
| • Change L1 from 1uH to 680nH in BOM..... | 10 |

IMPORTANT NOTICE AND DISCLAIMER

TI PROVIDES TECHNICAL AND RELIABILITY DATA (INCLUDING DATA SHEETS), DESIGN RESOURCES (INCLUDING REFERENCE DESIGNS), APPLICATION OR OTHER DESIGN ADVICE, WEB TOOLS, SAFETY INFORMATION, AND OTHER RESOURCES "AS IS" AND WITH ALL FAULTS, AND DISCLAIMS ALL WARRANTIES, EXPRESS AND IMPLIED, INCLUDING WITHOUT LIMITATION ANY IMPLIED WARRANTIES OF MERCHANTABILITY, FITNESS FOR A PARTICULAR PURPOSE OR NON-INFRINGEMENT OF THIRD PARTY INTELLECTUAL PROPERTY RIGHTS.

These resources are intended for skilled developers designing with TI products. You are solely responsible for (1) selecting the appropriate TI products for your application, (2) designing, validating and testing your application, and (3) ensuring your application meets applicable standards, and any other safety, security, regulatory or other requirements.

These resources are subject to change without notice. TI grants you permission to use these resources only for development of an application that uses the TI products described in the resource. Other reproduction and display of these resources is prohibited. No license is granted to any other TI intellectual property right or to any third party intellectual property right. TI disclaims responsibility for, and you will fully indemnify TI and its representatives against, any claims, damages, costs, losses, and liabilities arising out of your use of these resources.

TI's products are provided subject to [TI's Terms of Sale](#) or other applicable terms available either on ti.com or provided in conjunction with such TI products. TI's provision of these resources does not expand or otherwise alter TI's applicable warranties or warranty disclaimers for TI products.

TI objects to and rejects any additional or different terms you may have proposed.

Mailing Address: Texas Instruments, Post Office Box 655303, Dallas, Texas 75265
Copyright © 2022, Texas Instruments Incorporated