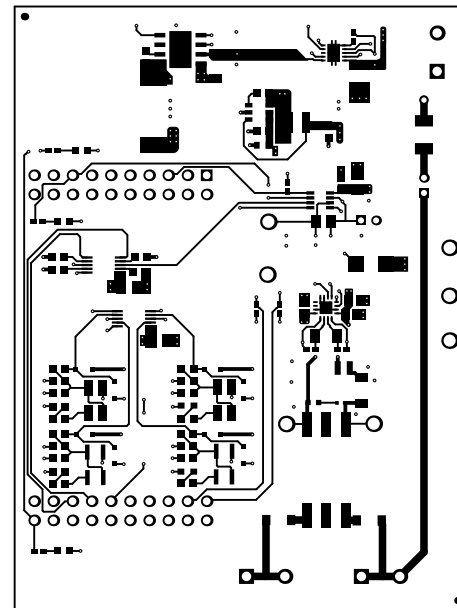
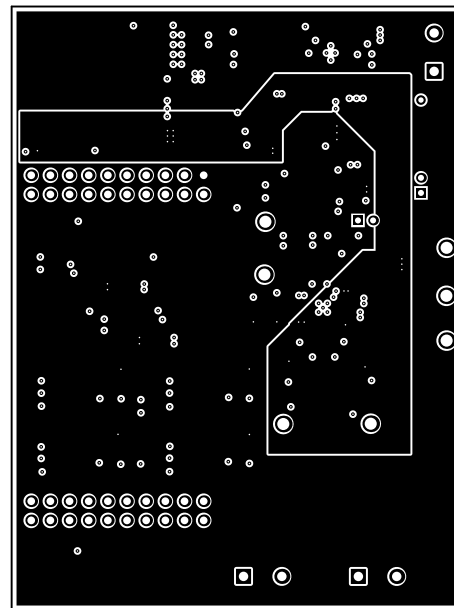


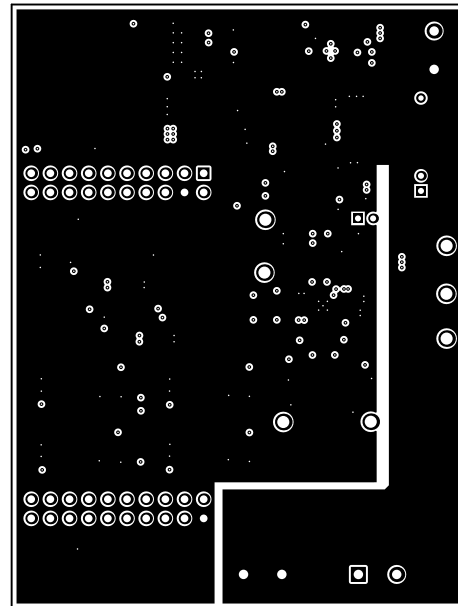
ALL ARTWORK VIEWED FROM TOP SIDE	BOARD #	TDA-C0285	REV	EI	SUN REV	Not in version control
LAYER NAME =	Top Solder					
PLOT NAME =	Top Solder Mask				GENERATED	1
		11-17-2023	2:46:06 PM	TEXAS INSTRUMENTS		



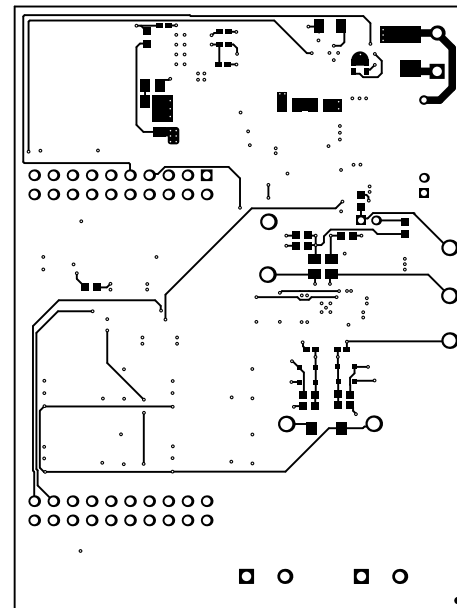
ALL ARTWORK VIEWED FROM TOP SIDE	BOARD #	TDA-C0283	REV	EI	SUN REV	Not in version control
LAYER NAME =	Top Layer					
PLOT NAME =	GENERATED 1 11-7-2023 2:46:06 PM				TEXAS INSTRUMENTS	



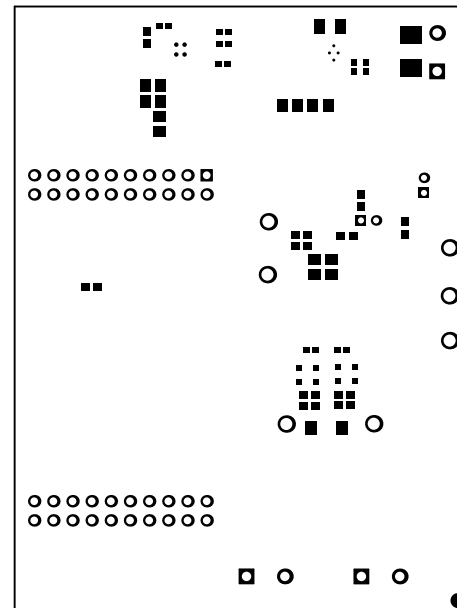
ALL ARTWORK VIEWED FROM TOP SIDE	BOARD #	TDA-C0936	REV	EI	SUN REV	Not in version control
LAYER NAME =						
PLOT NAME =	Signal Layer 1	GENERATED	1	11-27-2023	2:46:07 PM	TEXAS INSTRUMENTS



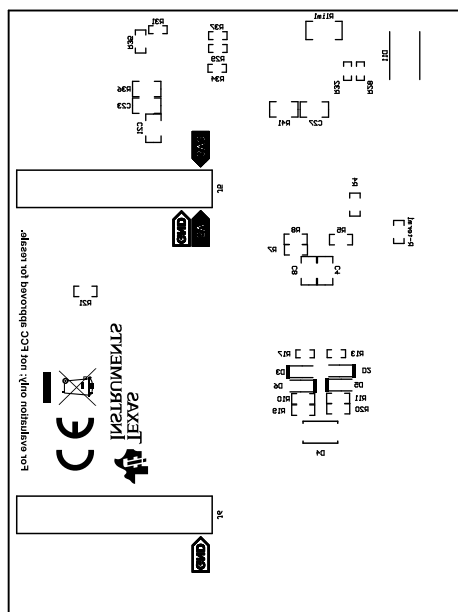
ALL ARTWORK VIEWED FROM TOP SIDE	BOARD #	TDA-C0936	REV	EI	SUN REV	Not in version control
LAYER NAME =						
PLOT NAME = Signal Layer 2	GENERATED	1	11/2/2023	2:46:07 PM	TEXAS INSTRUMENTS	



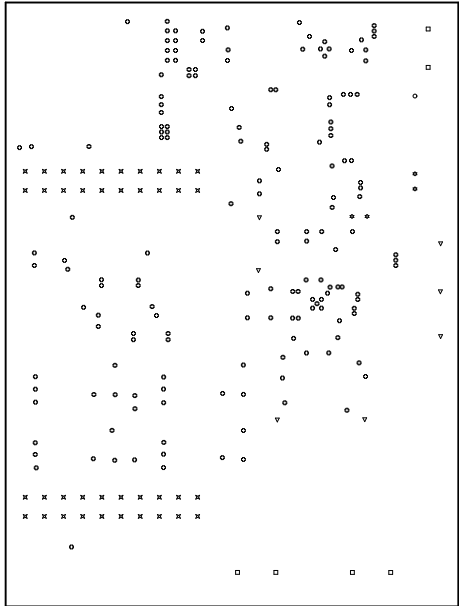
ALL ARTWORK VIEWED FROM TOP SIDE	BOARD #	TDA-C0203	REV	EI	SUN REV	Not in version control
LAYER NAME =	Bottom Layer					
PLOT NAME =	GENERATED 1 11/7/2023 2:46:08 PM				TEXAS INSTRUMENTS	



ALL ARTWORK VIEWED FROM TOP SIDE	BOARD #	TDA-02095	REV	EI	SUN REV	Not in version control
LAYER NAME =	Bottom Solder					
PLOT NAME =	GENERATED 1 11/7/2023 2:46:08 PM				TEXAS INSTRUMENTS	

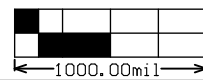
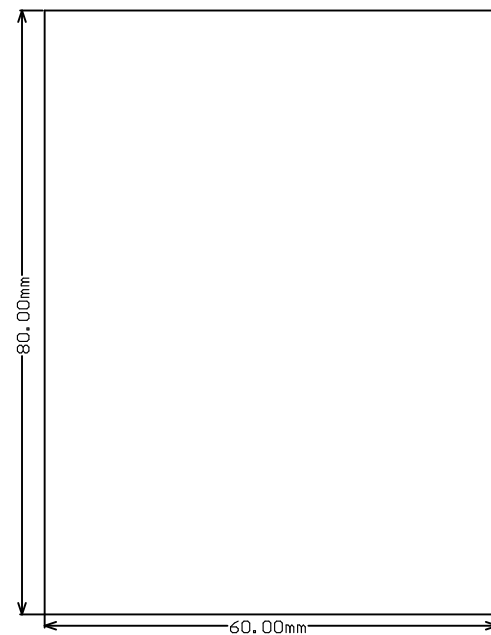


ALL artwork viewed from TOP SIDE	BOARD #	TIDN-010936	REV#	E1	SUN REV#	Not in version control
LAYER NAME =	Bottom Overlay					
PLOT NAME =	GENERATED 1 11-7-2023 2:46:08 PM				TEXAS INSTRUMENTS	



Layer	Quantity	Component	Value	Footprint	DR Footprint	Link Reference
0	1	DR001	DR001	DR001	DR001	
1	1	DR002	DR002	DR002	DR002	
2	1	DR003	DR003	DR003	DR003	
3	1	DR004	DR004	DR004	DR004	
4	1	DR005	DR005	DR005	DR005	
5	1	DR006	DR006	DR006	DR006	
6	1	DR007	DR007	DR007	DR007	
7	1	DR008	DR008	DR008	DR008	
8	1	DR009	DR009	DR009	DR009	
9	1	DR010	DR010	DR010	DR010	
10	1	DR011	DR011	DR011	DR011	
11	1	DR012	DR012	DR012	DR012	
12	1	DR013	DR013	DR013	DR013	
13	1	DR014	DR014	DR014	DR014	
14	1	DR015	DR015	DR015	DR015	
15	1	DR016	DR016	DR016	DR016	
16	1	DR017	DR017	DR017	DR017	
17	1	DR018	DR018	DR018	DR018	
18	1	DR019	DR019	DR019	DR019	
19	1	DR020	DR020	DR020	DR020	
20	1	DR021	DR021	DR021	DR021	
21	1	DR022	DR022	DR022	DR022	
22	1	DR023	DR023	DR023	DR023	
23	1	DR024	DR024	DR024	DR024	
24	1	DR025	DR025	DR025	DR025	
25	1	DR026	DR026	DR026	DR026	
26	1	DR027	DR027	DR027	DR027	
27	1	DR028	DR028	DR028	DR028	
28	1	DR029	DR029	DR029	DR029	
29	1	DR030	DR030	DR030	DR030	
30	1	DR031	DR031	DR031	DR031	
31	1	DR032	DR032	DR032	DR032	
32	1	DR033	DR033	DR033	DR033	
33	1	DR034	DR034	DR034	DR034	
34	1	DR035	DR035	DR035	DR035	
35	1	DR036	DR036	DR036	DR036	
36	1	DR037	DR037	DR037	DR037	
37	1	DR038	DR038	DR038	DR038	
38	1	DR039	DR039	DR039	DR039	
39	1	DR040	DR040	DR040	DR040	
40	1	DR041	DR041	DR041	DR041	
41	1	DR042	DR042	DR042	DR042	
42	1	DR043	DR043	DR043	DR043	
43	1	DR044	DR044	DR044	DR044	
44	1	DR045	DR045	DR045	DR045	
45	1	DR046	DR046	DR046	DR046	
46	1	DR047	DR047	DR047	DR047	
47	1	DR048	DR048	DR048	DR048	
48	1	DR049	DR049	DR049	DR049	
49	1	DR050	DR050	DR050	DR050	
50	1	DR051	DR051	DR051	DR051	
51	1	DR052	DR052	DR052	DR052	
52	1	DR053	DR053	DR053	DR053	
53	1	DR054	DR054	DR054	DR054	
54	1	DR055	DR055	DR055	DR055	
55	1	DR056	DR056	DR056	DR056	
56	1	DR057	DR057	DR057	DR057	
57	1	DR058	DR058	DR058	DR058	
58	1	DR059	DR059	DR059	DR059	
59	1	DR060	DR060	DR060	DR060	
60	1	DR061	DR061	DR061	DR061	
61	1	DR062	DR062	DR062	DR062	
62	1	DR063	DR063	DR063	DR063	
63	1	DR064	DR064	DR064	DR064	
64	1	DR065	DR065	DR065	DR065	
65	1	DR066	DR066	DR066	DR066	
66	1	DR067	DR067	DR067	DR067	
67	1	DR068	DR068	DR068	DR068	
68	1	DR069	DR069	DR069	DR069	
69	1	DR070	DR070	DR070	DR070	
70	1	DR071	DR071	DR071	DR071	
71	1	DR072	DR072	DR072	DR072	
72	1	DR073	DR073	DR073	DR073	
73	1	DR074	DR074	DR074	DR074	
74	1	DR075	DR075	DR075	DR075	
75	1	DR076	DR076	DR076	DR076	
76	1	DR077	DR077	DR077	DR077	
77	1	DR078	DR078	DR078	DR078	
78	1	DR079	DR079	DR079	DR079	
79	1	DR080	DR080	DR080	DR080	
80	1	DR081	DR081	DR081	DR081	
81	1	DR082	DR082	DR082	DR082	
82	1	DR083	DR083	DR083	DR083	
83	1	DR084	DR084	DR084	DR084	
84	1	DR085	DR085	DR085	DR085	
85	1	DR086	DR086	DR086	DR086	
86	1	DR087	DR087	DR087	DR087	
87	1	DR088	DR088	DR088	DR088	
88	1	DR089	DR089	DR089	DR089	
89	1	DR090	DR090	DR090	DR090	
90	1	DR091	DR091	DR091	DR091	
91	1	DR092	DR092	DR092	DR092	
92	1	DR093	DR093	DR093	DR093	
93	1	DR094	DR094	DR094	DR094	
94	1	DR095	DR095	DR095	DR095	
95	1	DR096	DR096	DR096	DR096	
96	1	DR097	DR097	DR097	DR097	
97	1	DR098	DR098	DR098	DR098	
98	1	DR099	DR099	DR099	DR099	
99	1	DR100	DR100	DR100	DR100	

ALL ARTWORK VIEWED FROM TOP SIDE	BORD #	TIDN-01093	REV#	EI	SUN REV	Not in version control	
LAYER NAME =	Dr111 Drawing						
PLOT NAME =	Dr111 Drawing			GENERATED	1	11/7/2023 2:46:09 PM	TEXAS INSTRUMENTS



ALL ARTWORK VIEWED FROM TOP SIDE	BOARD #	TIDN-010936	REV#	01	SUN REV#	Not in version control
LAYER NAME =	H2 Board Dimensions					
PLOT NAME =	Board Dimensions			GENERATED	11-7-2023	2:46:10 PM
				TEXAS INSTRUMENTS		

IMPORTANT NOTICE AND DISCLAIMER

TI PROVIDES TECHNICAL AND RELIABILITY DATA (INCLUDING DATA SHEETS), DESIGN RESOURCES (INCLUDING REFERENCE DESIGNS), APPLICATION OR OTHER DESIGN ADVICE, WEB TOOLS, SAFETY INFORMATION, AND OTHER RESOURCES "AS IS" AND WITH ALL FAULTS, AND DISCLAIMS ALL WARRANTIES, EXPRESS AND IMPLIED, INCLUDING WITHOUT LIMITATION ANY IMPLIED WARRANTIES OF MERCHANTABILITY, FITNESS FOR A PARTICULAR PURPOSE OR NON-INFRINGEMENT OF THIRD PARTY INTELLECTUAL PROPERTY RIGHTS.

These resources are intended for skilled developers designing with TI products. You are solely responsible for (1) selecting the appropriate TI products for your application, (2) designing, validating and testing your application, and (3) ensuring your application meets applicable standards, and any other safety, security, regulatory or other requirements.

These resources are subject to change without notice. TI grants you permission to use these resources only for development of an application that uses the TI products described in the resource. Other reproduction and display of these resources is prohibited. No license is granted to any other TI intellectual property right or to any third party intellectual property right. TI disclaims responsibility for, and you will fully indemnify TI and its representatives against, any claims, damages, costs, losses, and liabilities arising out of your use of these resources.

TI's products are provided subject to [TI's Terms of Sale](#) or other applicable terms available either on [ti.com](https://www.ti.com) or provided in conjunction with such TI products. TI's provision of these resources does not expand or otherwise alter TI's applicable warranties or warranty disclaimers for TI products.

TI objects to and rejects any additional or different terms you may have proposed.

Mailing Address: Texas Instruments, Post Office Box 655303, Dallas, Texas 75265
Copyright © 2023, Texas Instruments Incorporated