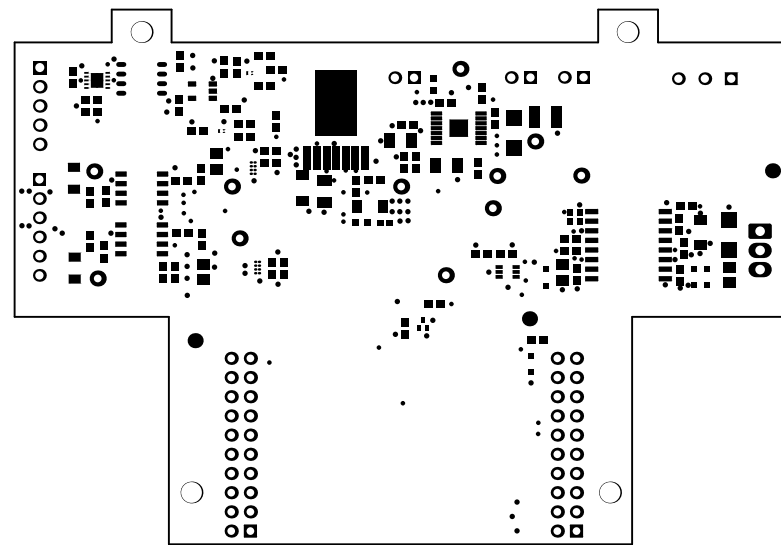
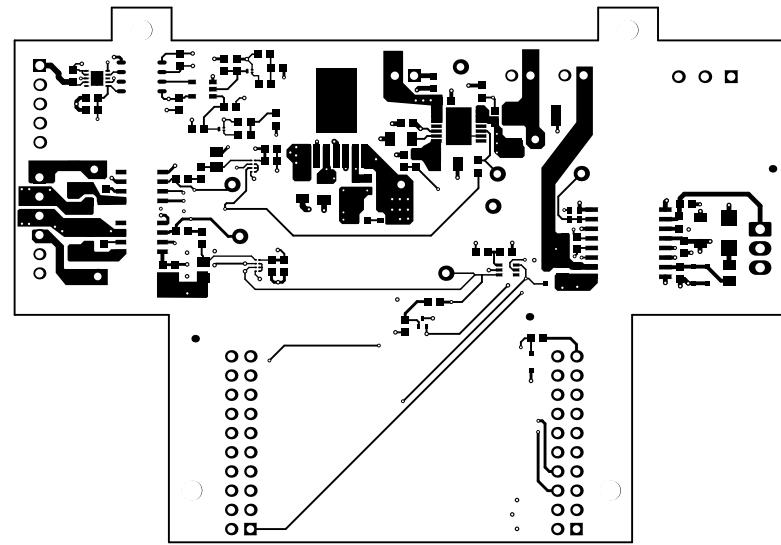


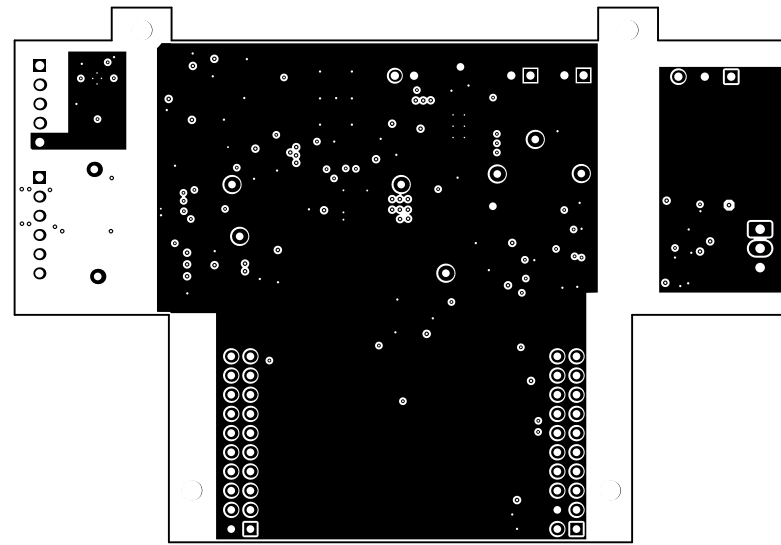
ALL ARTWORK VIEWED FROM TOP SIDE	BOARD #: TIDA-01599	REV: E2.1	SUN REV: Not in version control
LAYER NAME = Top Overlay	TID #: TIDA-01599		
PLOT NAME = Top Overlay	GENERATED : 2/22/2022	9:22:42 AM	TEXAS INSTRUMENTS



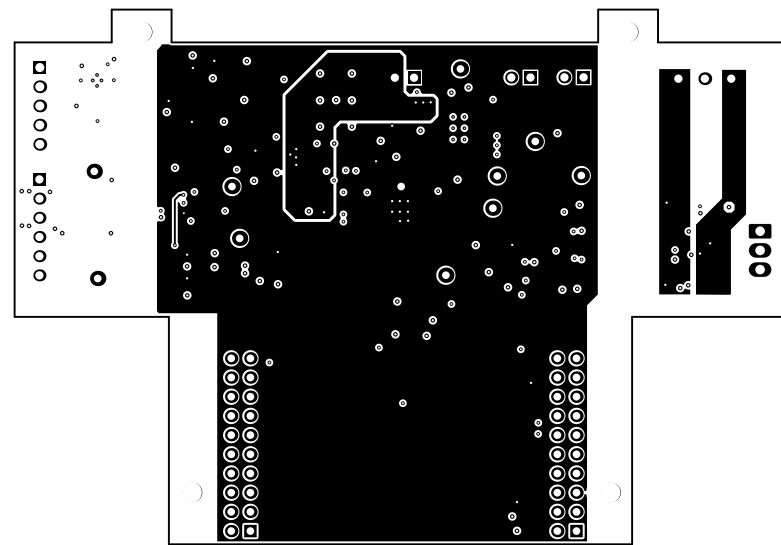
ALL ARTWORK VIEWED FROM TOP SIDE	BOARD #: TIDA-01599	REV: E2.1	SUN REV: Not in version control
LAYER NAME = Top Solder	TID #: TIDA-01599		
PLOT NAME = Top Solder Mask	GENERATED : 2/22/2022 9:22:42 AM	TEXAS INSTRUMENTS	



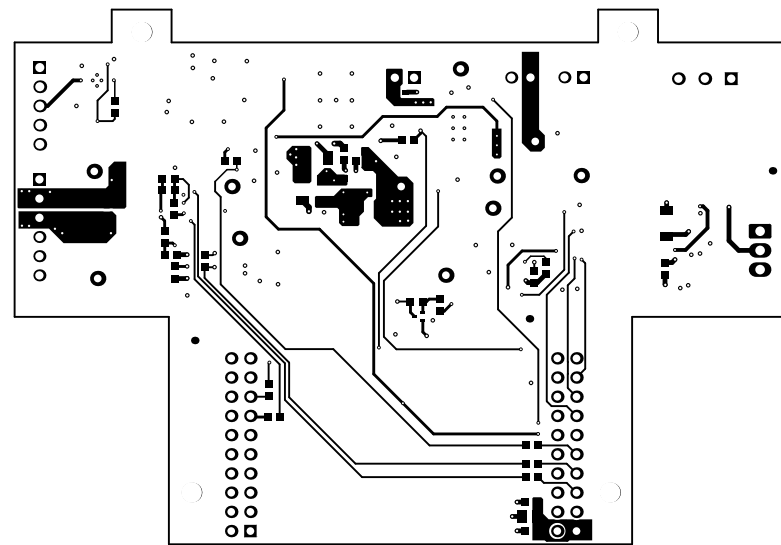
ALL ARTWORK VIEWED FROM TOP SIDE	BOARD #: TIDA-01599	REV: E2.1	SUN REV: Not in version control
LAYER NAME = Top Layer	TID #: TIDA-01599		
PLOT NAME = Top Layer	GENERATED : 2/22/2022 9:22:43 AM	TEXAS INSTRUMENTS	



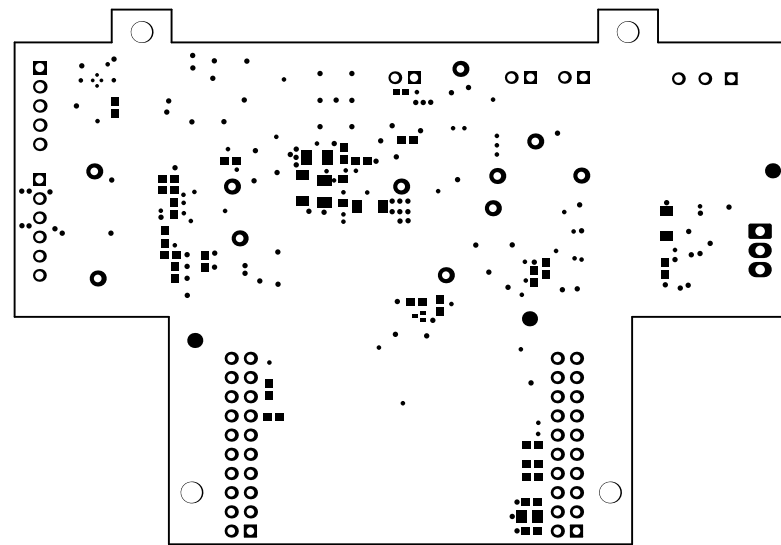
ALL ARTWORK VIEWED FROM TOP SIDE	BOARD #: TIDA-01599	REV: E2.1	SUN REV: Not in version control
LAYER NAME = GROUND	TID #: TIDA-01599		
PLOT NAME = Signal Layer 1	GENERATED : 2/22/2022 9:22:44 AM	TEXAS INSTRUMENTS	



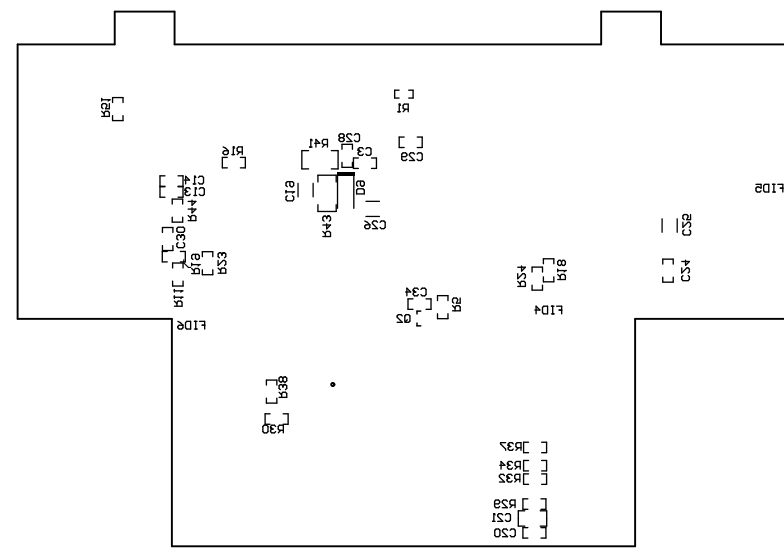
ALL ARTWORK VIEWED FROM TOP SIDE	BOARD #: TIDA-01599	REV: E2.1	SUN REV: Not in version control
LAYER NAME = POWER	TID #: TIDA-01599		
PLOT NAME = Signal Layer 2	GENERATED : 2/22/2022 9:22:44 AM	TEXAS INSTRUMENTS	



ALL ARTWORK VIEWED FROM TOP SIDE	BOARD #: TIDA-01599	REV: E2.1	SUN REV: Not in version control
LAYER NAME = Bottom Layer	TID #: TIDA-01599		
PLOT NAME = Bottom Layer	GENERATED : 2/22/2022 9:22:45 AM	TEXAS INSTRUMENTS	

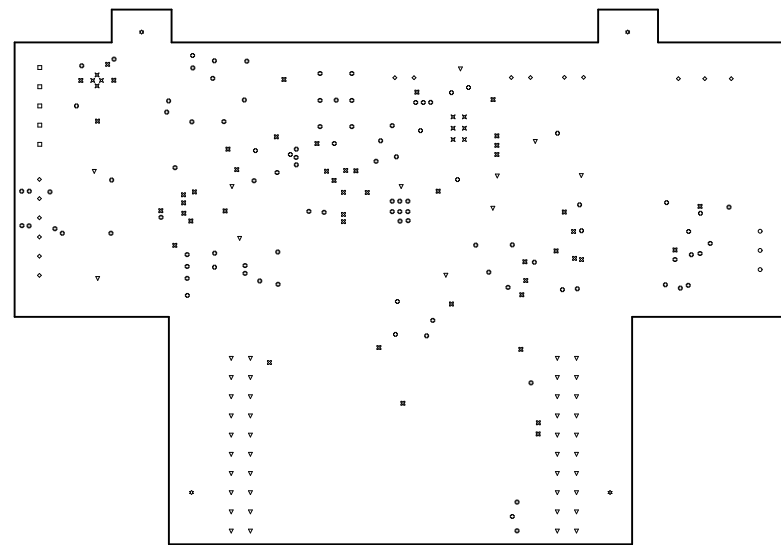


ALL ARTWORK VIEWED FROM TOP SIDE	BOARD #: TIDA-01599	REV: E2.1	SUN REV: Not in version control
LAYER NAME = Bottom Solder	TID #: TIDA-01599		
PLOT NAME = Bottom Solder Mask	GENERATED : 2/22/2022 9:22:45 AM	TEXAS INSTRUMENTS	



ALL ARTWORK VIEWED FROM TOP SIDE	BOARD #: TIDA-01599	REV: E2.1	SUN REV: Not in version control
LAYER NAME = Bottom Overlay	TID #: TIDA-01599		
PLOT NAME = Bottom Overlay	GENERATED : 2/22/2022	9:22:46 AM	TEXAS INSTRUMENTS



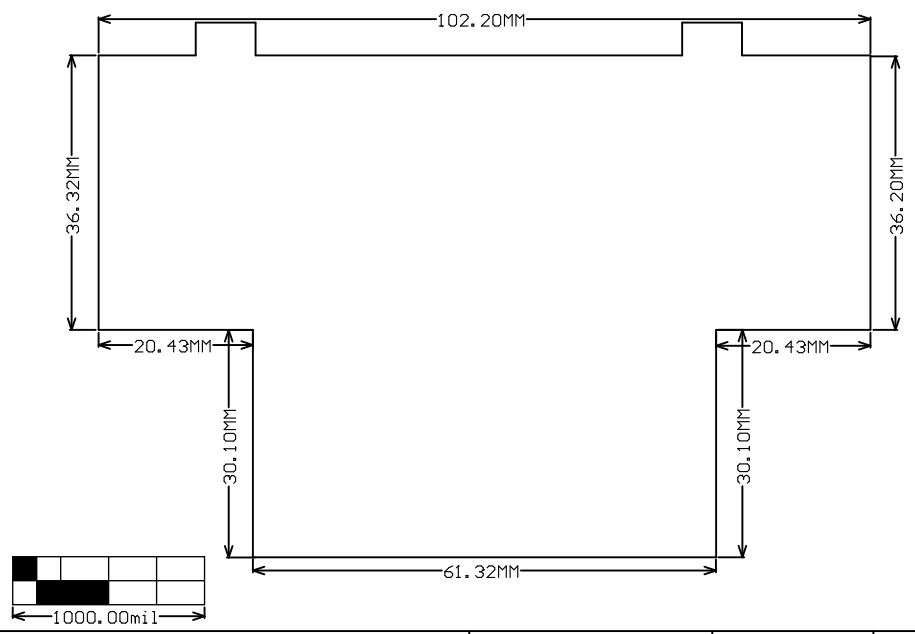


Drill Table:

Symbol	Count	Hole Size	Plated	Hole Type	Via/Pad
⊠	10	7.87mil (0.200mm)	PTH	Round	Via
⊞	48	10.00mil (0.254mm)	PTH	Round	Via
⊕	100	12.00mil (0.305mm)	PTH	Round	Via
▽	51	40.00mil (1.016mm)	PTH	Round	Pad
◇	15	43.31mil (1.100mm)	PTH	Round	Pad
□	5	47.24mil (1.200mm)	PTH	Round	Pad
○	3	50.00mil (1.270mm)	PTH	Round	Pad
⊛	4	108.00mil (2.743mm)	NPTH	Round	Pad
	236 Total				

Tolerance:  
 For 7.87mil Via +0/-7.87mil  
 For 10mil Via +0/-10 mil  
 For 12mil Via +0/-12 mil  
 For PTH drills +/-3 mil

ALL ARTWORK VIEWED FROM TOP SIDE	BOARD #: TIDA-01599	REV: E2.1	SUN REV: Not in version control
LAYER NAME = Drill Drawing	TID #: TIDA-01599		
PLOT NAME = Drill Drawing	GENERATED : 2/22/2022 9:22:46 AM	TEXAS INSTRUMENTS	



ALL ARTWORK VIEWED FROM TOP SIDE	BOARD #: TIDA-01599	REV: E2.1	SUN REV: Not in version control
LAYER NAME =	TID #: TIDA-01599		
PLOT NAME = Board Dimensions	GENERATED : 2/22/2022	9:22:48 AM	TEXAS INSTRUMENTS

## IMPORTANT NOTICE AND DISCLAIMER

TI PROVIDES TECHNICAL AND RELIABILITY DATA (INCLUDING DATA SHEETS), DESIGN RESOURCES (INCLUDING REFERENCE DESIGNS), APPLICATION OR OTHER DESIGN ADVICE, WEB TOOLS, SAFETY INFORMATION, AND OTHER RESOURCES "AS IS" AND WITH ALL FAULTS, AND DISCLAIMS ALL WARRANTIES, EXPRESS AND IMPLIED, INCLUDING WITHOUT LIMITATION ANY IMPLIED WARRANTIES OF MERCHANTABILITY, FITNESS FOR A PARTICULAR PURPOSE OR NON-INFRINGEMENT OF THIRD PARTY INTELLECTUAL PROPERTY RIGHTS.

These resources are intended for skilled developers designing with TI products. You are solely responsible for (1) selecting the appropriate TI products for your application, (2) designing, validating and testing your application, and (3) ensuring your application meets applicable standards, and any other safety, security, regulatory or other requirements.

These resources are subject to change without notice. TI grants you permission to use these resources only for development of an application that uses the TI products described in the resource. Other reproduction and display of these resources is prohibited. No license is granted to any other TI intellectual property right or to any third party intellectual property right. TI disclaims responsibility for, and you will fully indemnify TI and its representatives against, any claims, damages, costs, losses, and liabilities arising out of your use of these resources.

TI's products are provided subject to [TI's Terms of Sale](#) or other applicable terms available either on [ti.com](http://ti.com) or provided in conjunction with such TI products. TI's provision of these resources does not expand or otherwise alter TI's applicable warranties or warranty disclaimers for TI products.

TI objects to and rejects any additional or different terms you may have proposed.

Mailing Address: Texas Instruments, Post Office Box 655303, Dallas, Texas 75265  
Copyright © 2022, Texas Instruments Incorporated