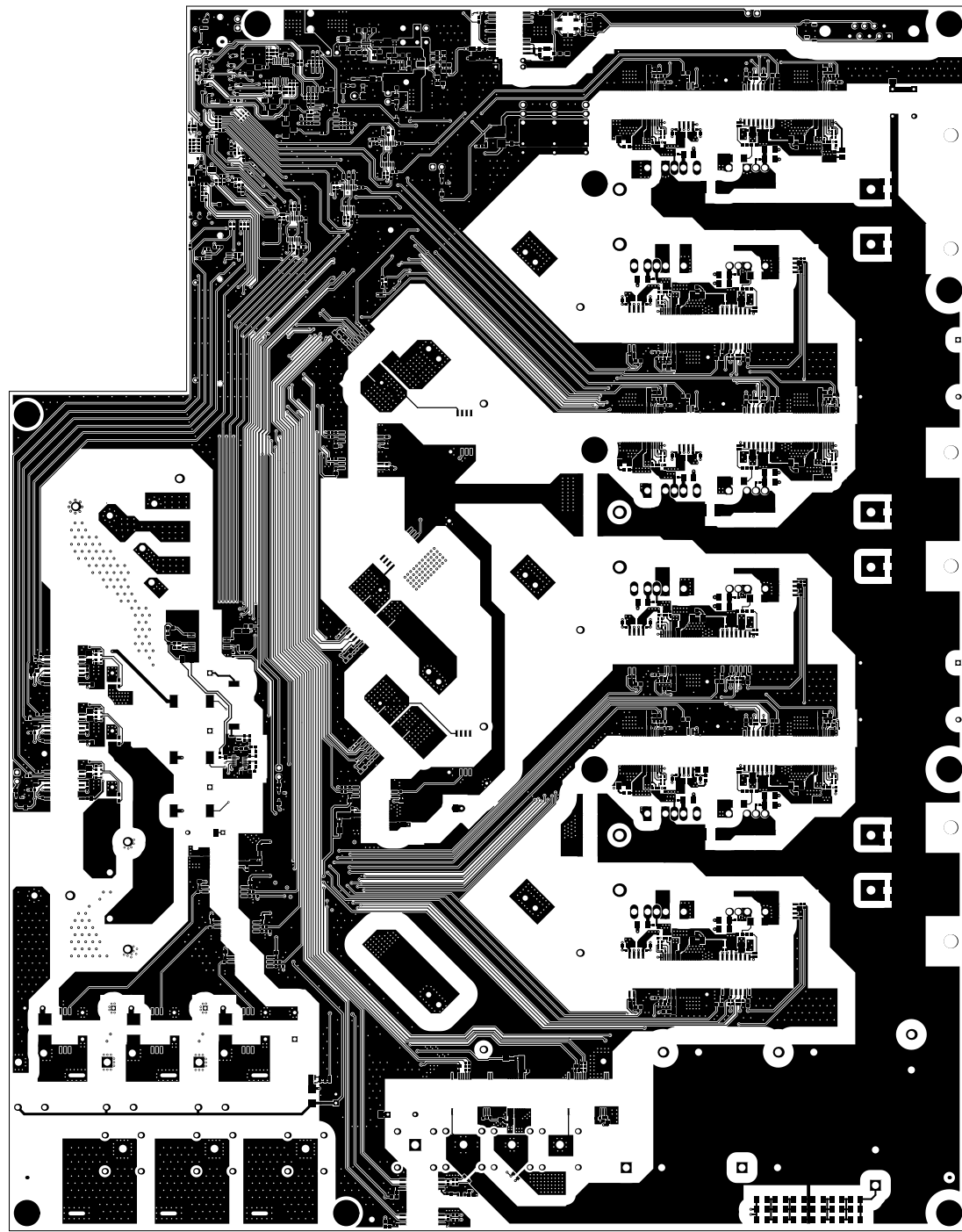
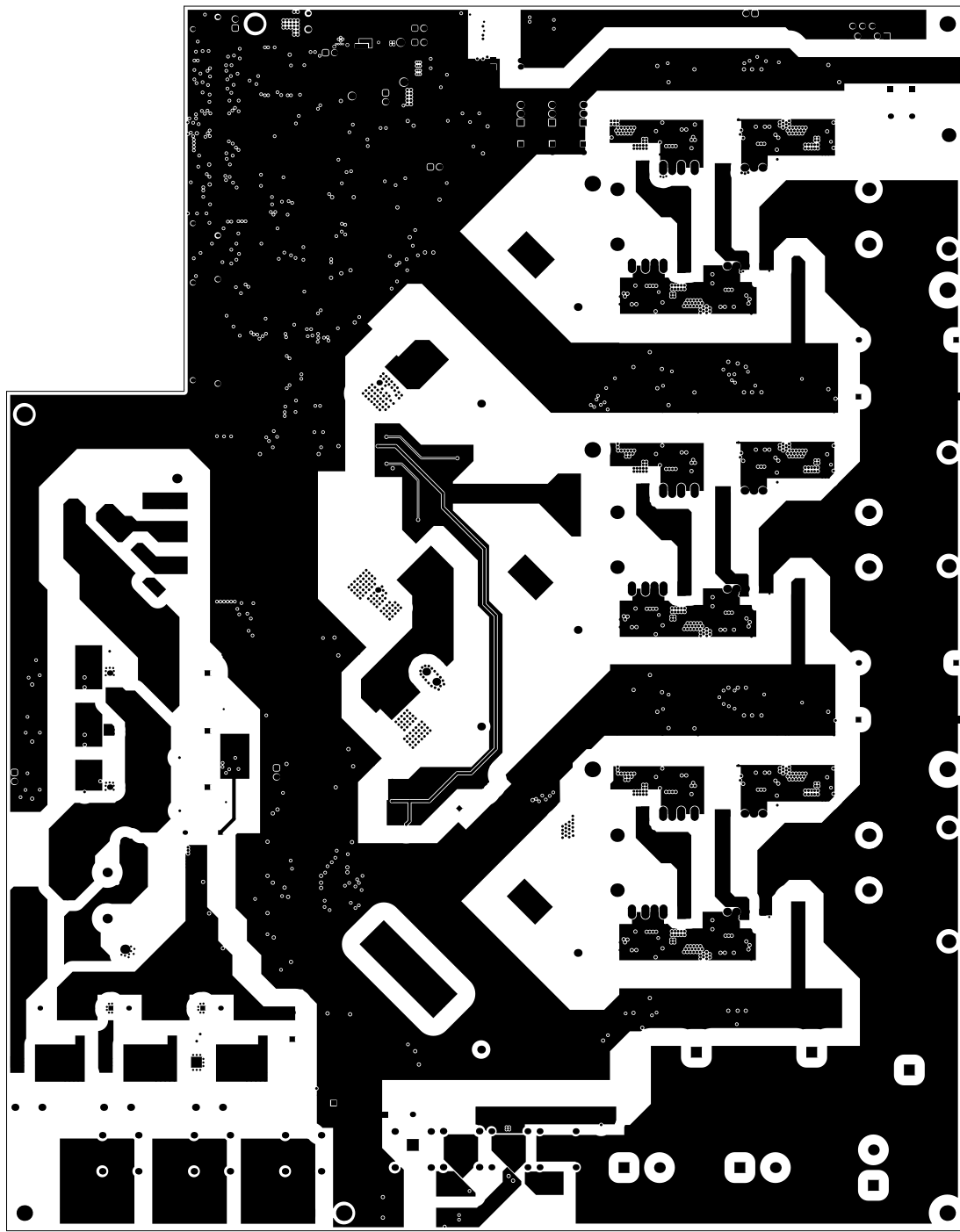


ALL NETNAME LEGEND FROM TOP SIDE	BOARD No.	TOP-0006	REV	07	REV	REV	Rev In VersionControl
LOWER WPC *	Top Holder						
PLAT WPC *	GENERATED *	3-9-2008	2-10-08 (H)	TOP-0006			

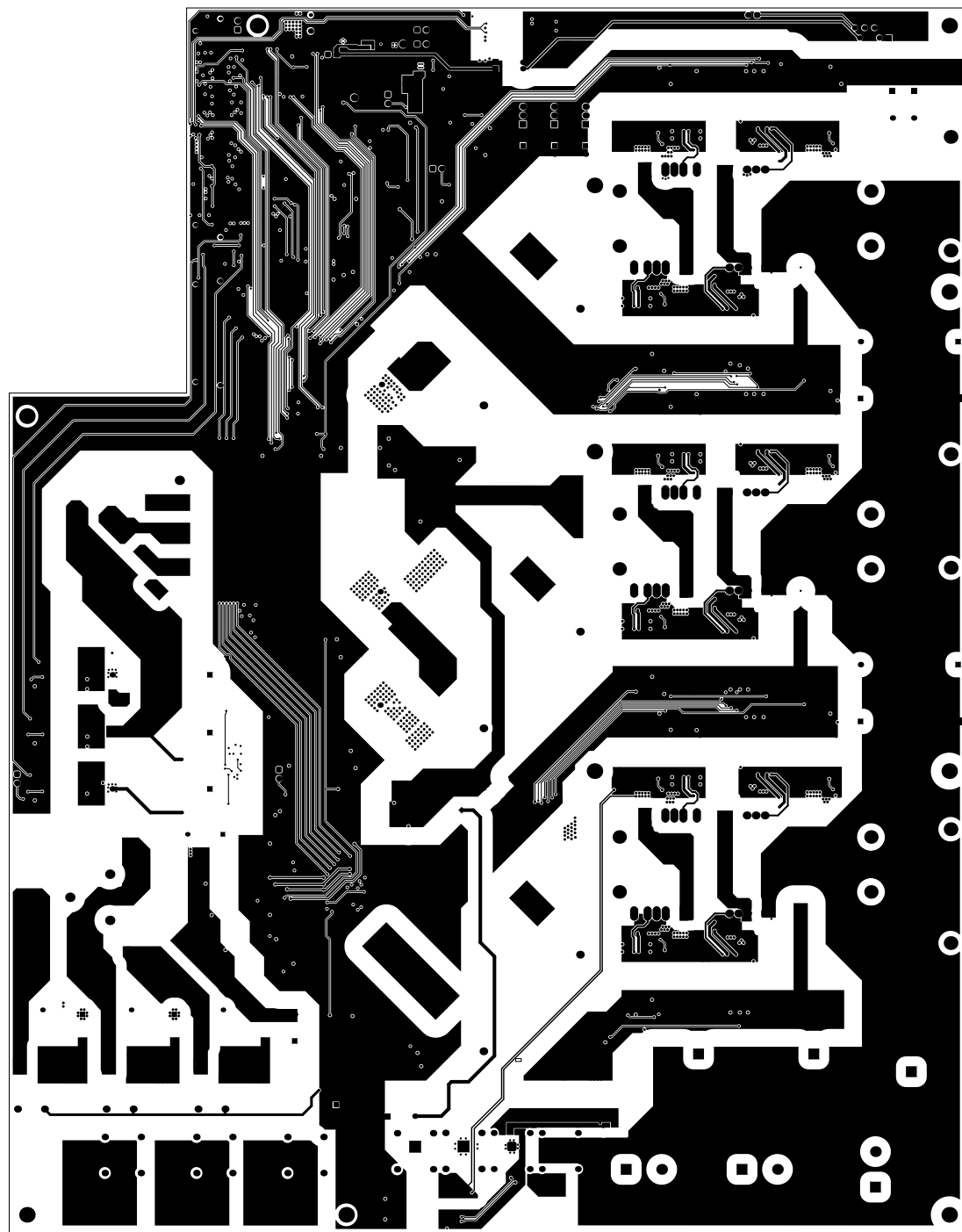


Top Layer

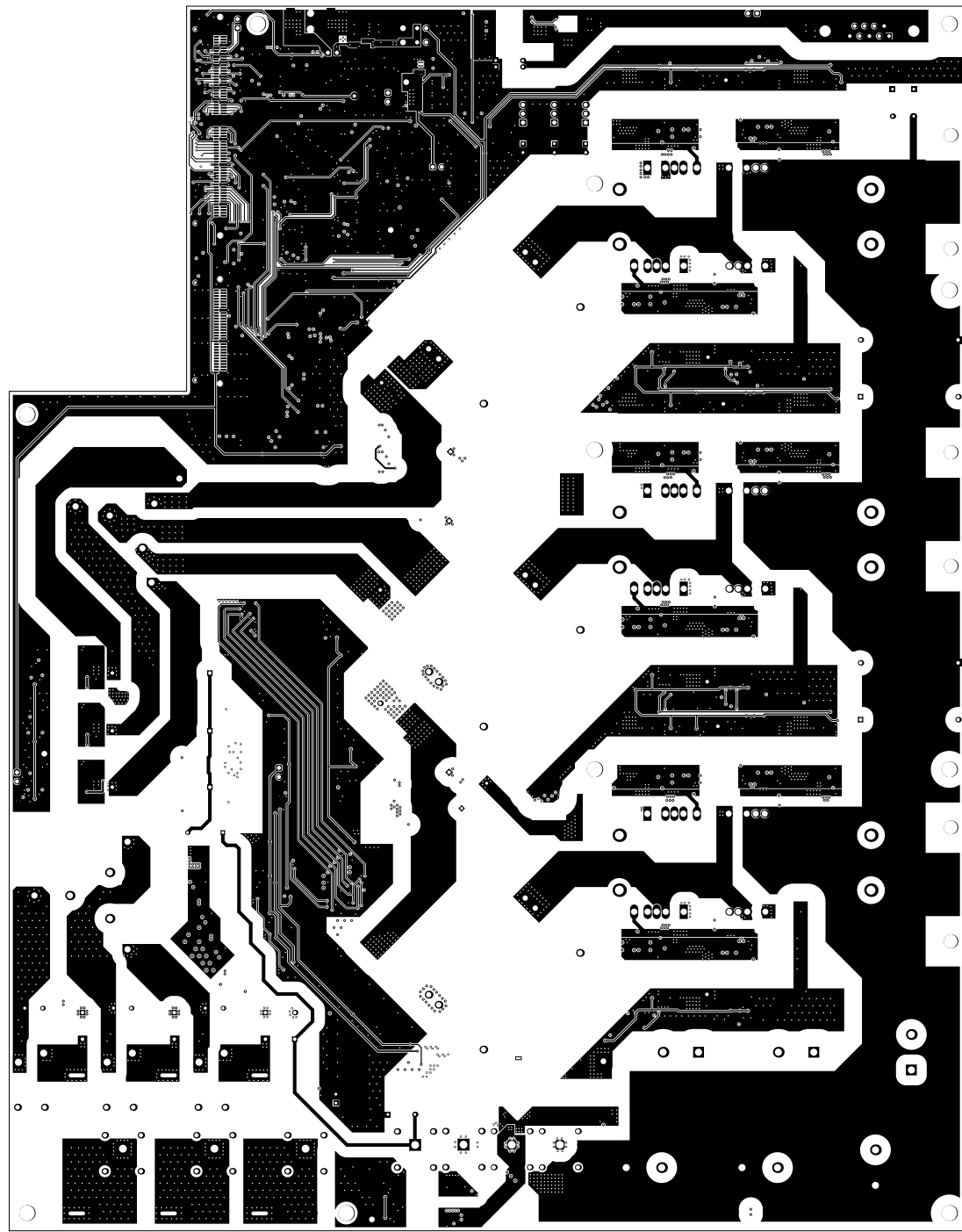
ALL NETS ARE LEADED FROM TOP SIDE	BOARD No.	TOP-0006	REV	07	REV	Rev In: 04/08/2008
LOWER WPC *						
PLAT WPC *	Top Layer	GENERATED	3-9-2008	14:00:00		TOP-0006



ALL RETURN LEADS FROM TOP SIDE	BOARD #	TOP DRAW	REV	LT	REV	REV	REV In VerbalComments
LOWER WPC *							
PLAT WPC *	Signal 1	GENERATED	3-3-2008	2-10-08 PM			TOPSIDE DISTRICTS

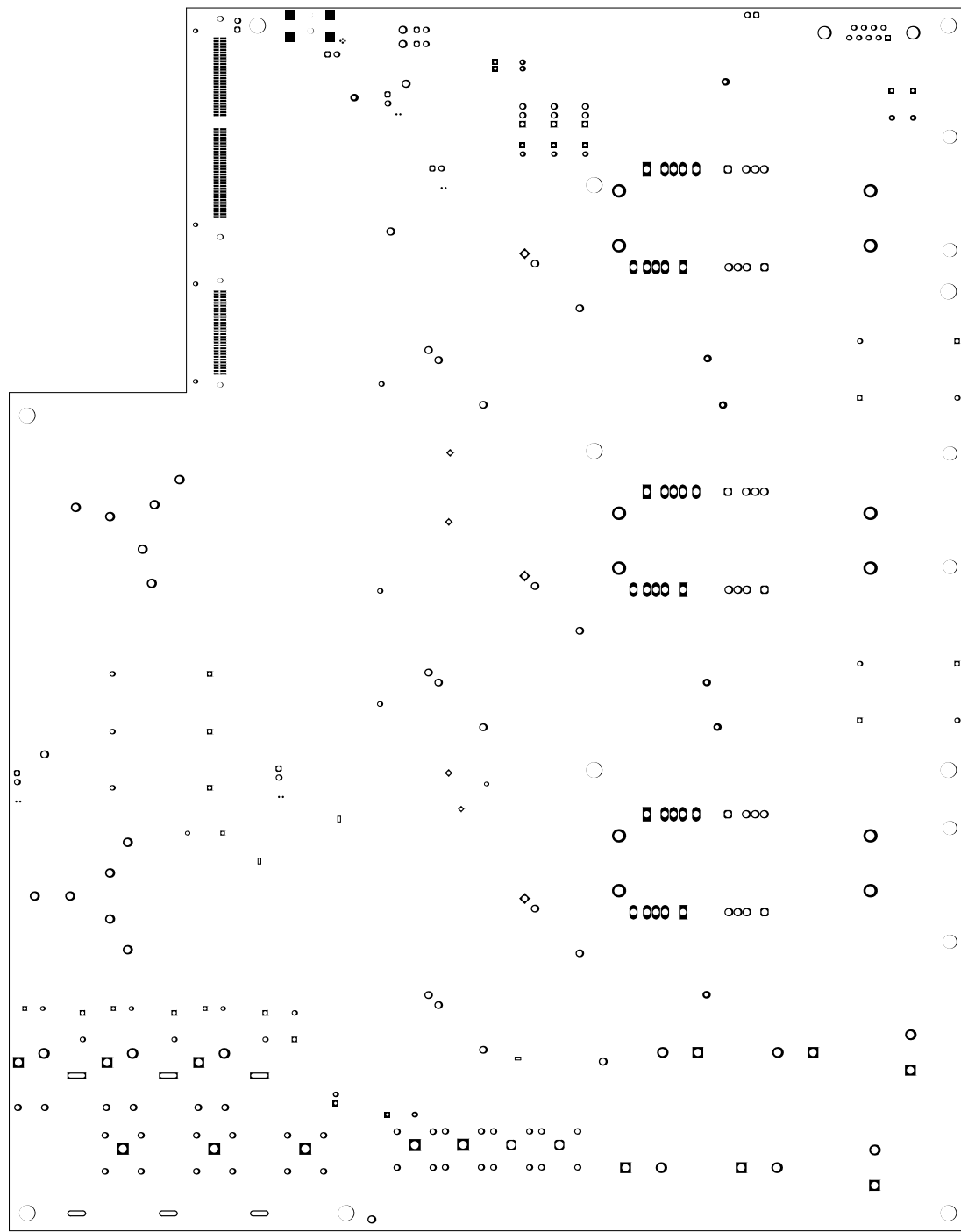


ALL NETS ARE HEADED FROM TOP SIDE	BOARD IN	TOP-SIDE	REV	07	REV	REV	Not In VersionControl
LOWER WPC *							
PLAT WPC *	Signal 2	GENERATED *	3-3-2008	2-10-08 01			TOPSIDE DISTRICTS

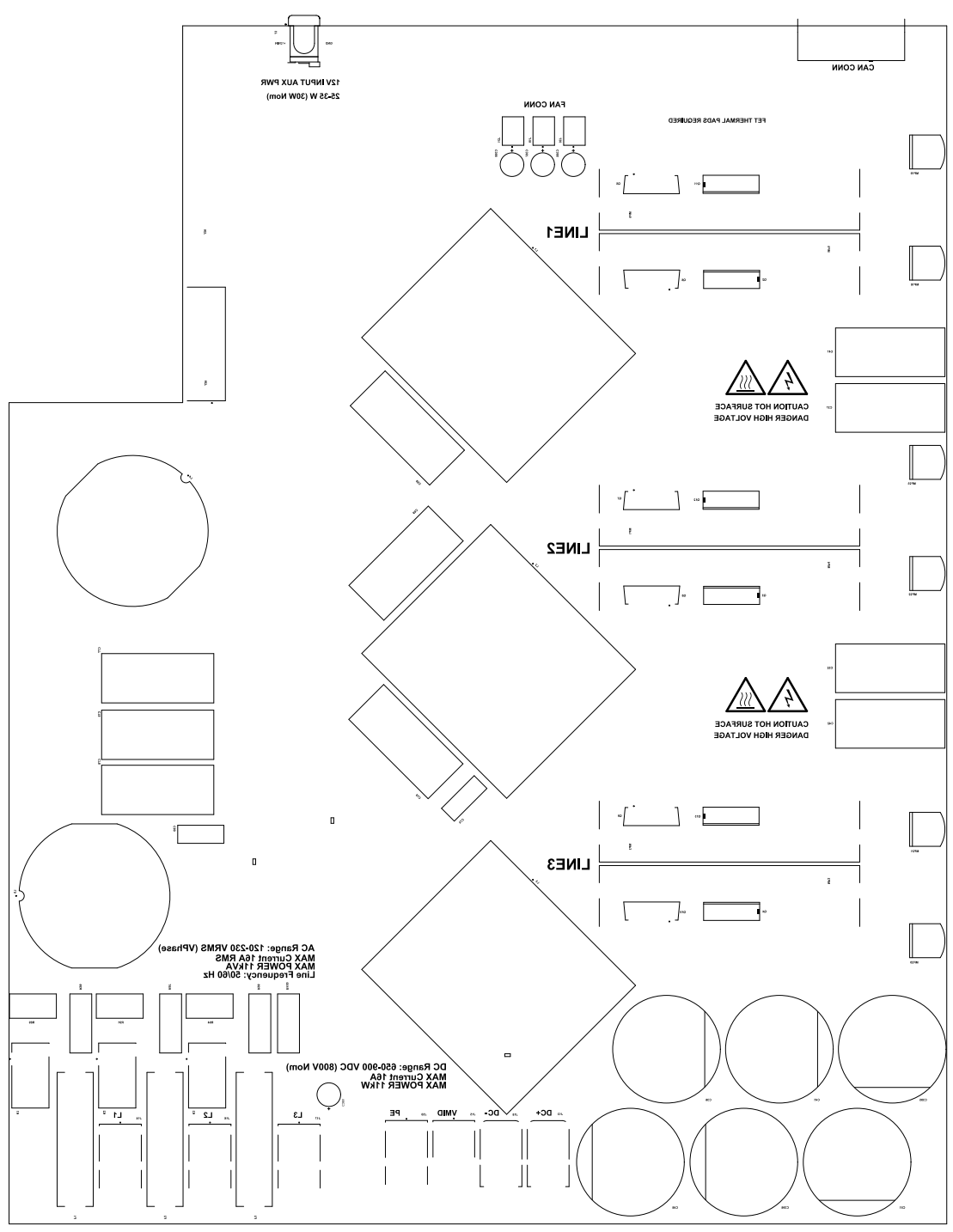


Bottom Layer

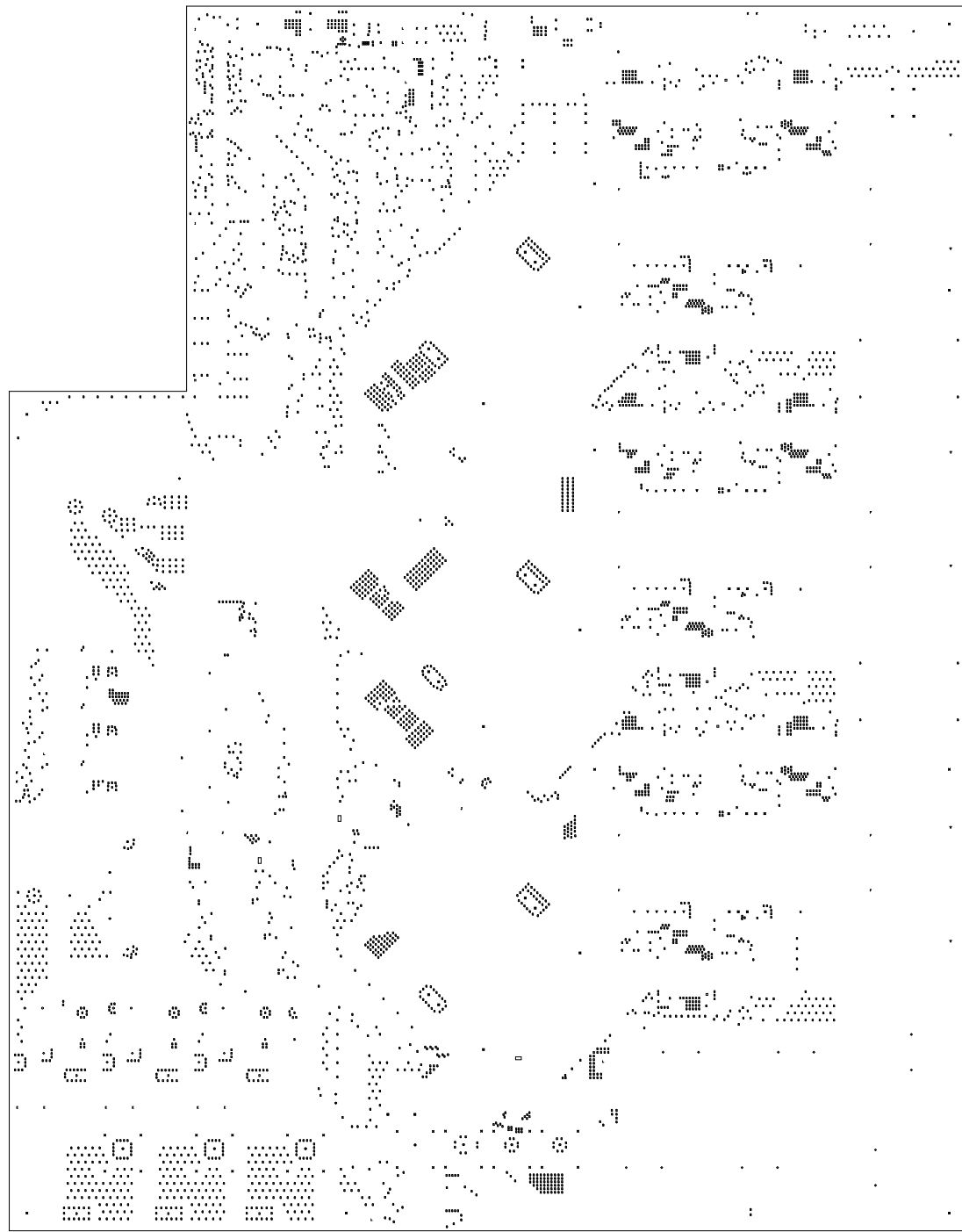
ALL NETS ARE HEADED FROM TOP SIDE	BOARD NO.	TOP DRAW	REV.	DATE	BY	CHK BY	NOT IN PARALLEL
LOWER SIDE *							
PLAT NAME *	Bottom Layer	GENERATED	3-9-2025	14:52:00			TOPSIDE



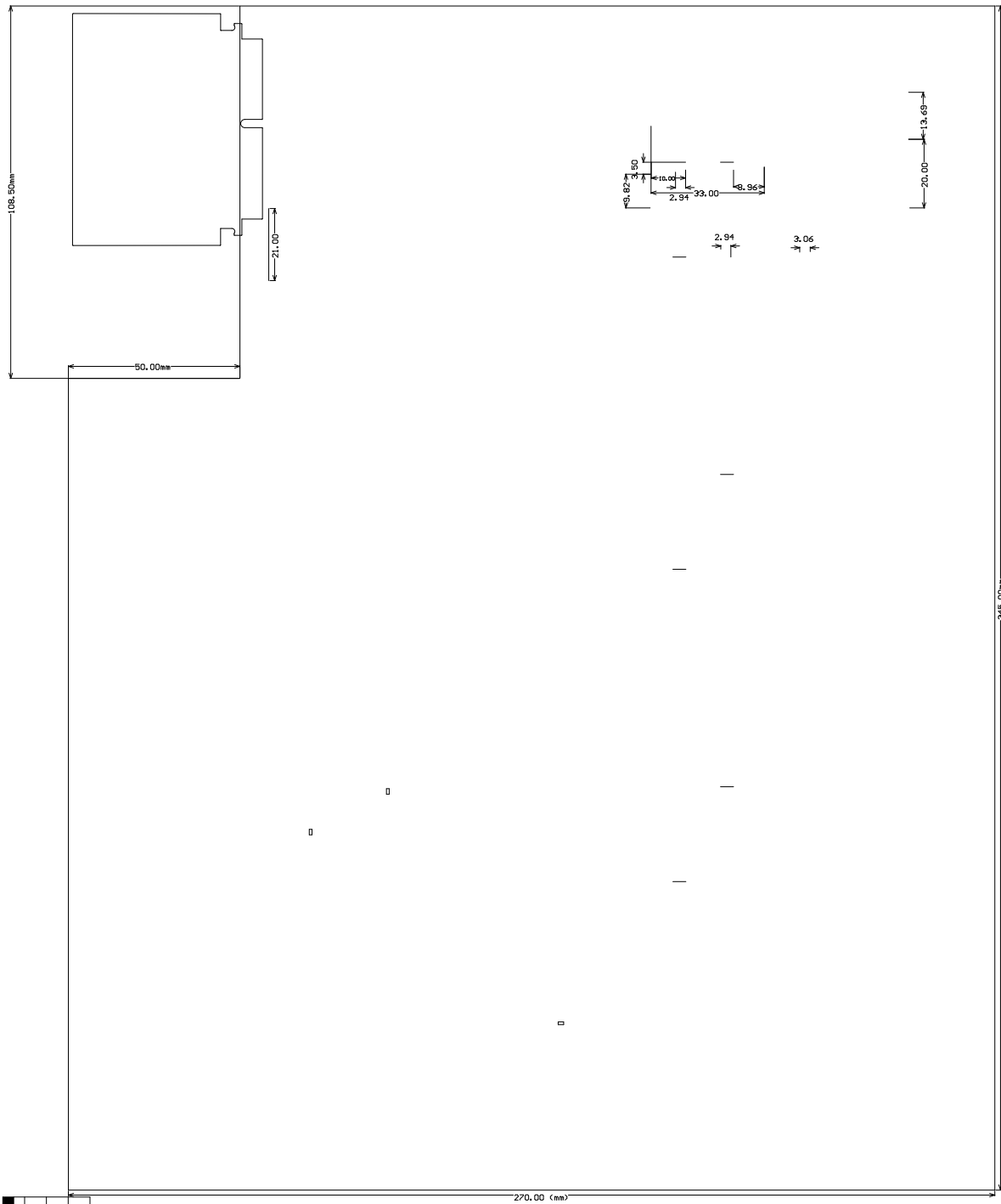
ALL NETNAME HEADS FROM TOP SIDE	BOARD No.	TOP-BOARD	REV	EP	REV	REV In VersionControl
LOWER WPC -	Bottom Solder					
PLAT WPC -	Bottom Solder Pad	GENERATED	1	3-9-2025	21:15:26 PM	TOPIC INSTRUMENTS



ALL RETURN LEADS FROM TOP SIDE	REV	DATE	BY	CHK	APP	REV	DATE	BY	CHK	APP
POWER SUPPLY	1	2023-10-27	JL							
POWER SUPPLY	1	2023-10-27	JL							



ALL DIMENSIONS UNLESS NOTED OTHERWISE	REV. NO.	DATE	BY	CHKD BY	APP. IN CONNECTION
1.000	1	10-10-55	J. H. H.	J. H. H.	J. H. H.
1.000	2	10-10-55	J. H. H.	J. H. H.	J. H. H.



ALL DIMENSIONS UNLESS NOTED OTHERWISE	BOARD NO.	TITLE	REV.	DATE	BY	CHKD BY	NOT IN SCALE
PLAT WPC - Board Dimensions	REVISED		3-9-2025	7-10-2025			SCALE IN METERS

IMPORTANT NOTICE AND DISCLAIMER

TI PROVIDES TECHNICAL AND RELIABILITY DATA (INCLUDING DATA SHEETS), DESIGN RESOURCES (INCLUDING REFERENCE DESIGNS), APPLICATION OR OTHER DESIGN ADVICE, WEB TOOLS, SAFETY INFORMATION, AND OTHER RESOURCES "AS IS" AND WITH ALL FAULTS, AND DISCLAIMS ALL WARRANTIES, EXPRESS AND IMPLIED, INCLUDING WITHOUT LIMITATION ANY IMPLIED WARRANTIES OF MERCHANTABILITY, FITNESS FOR A PARTICULAR PURPOSE OR NON-INFRINGEMENT OF THIRD PARTY INTELLECTUAL PROPERTY RIGHTS.

These resources are intended for skilled developers designing with TI products. You are solely responsible for (1) selecting the appropriate TI products for your application, (2) designing, validating and testing your application, and (3) ensuring your application meets applicable standards, and any other safety, security, regulatory or other requirements.

These resources are subject to change without notice. TI grants you permission to use these resources only for development of an application that uses the TI products described in the resource. Other reproduction and display of these resources is prohibited. No license is granted to any other TI intellectual property right or to any third party intellectual property right. TI disclaims responsibility for, and you will fully indemnify TI and its representatives against, any claims, damages, costs, losses, and liabilities arising out of your use of these resources.

TI's products are provided subject to [TI's Terms of Sale](#) or other applicable terms available either on [ti.com](#) or provided in conjunction with such TI products. TI's provision of these resources does not expand or otherwise alter TI's applicable warranties or warranty disclaimers for TI products.

TI objects to and rejects any additional or different terms you may have proposed.

Mailing Address: Texas Instruments, Post Office Box 655303, Dallas, Texas 75265

Copyright © 2025, Texas Instruments Incorporated

DRAFT
TI Confidential – NDA Restrictions

IMPORTANT NOTICE AND DISCLAIMER

TI PROVIDES TECHNICAL AND RELIABILITY DATA (INCLUDING DATA SHEETS), DESIGN RESOURCES (INCLUDING REFERENCE DESIGNS), APPLICATION OR OTHER DESIGN ADVICE, WEB TOOLS, SAFETY INFORMATION, AND OTHER RESOURCES "AS IS" AND WITH ALL FAULTS, AND DISCLAIMS ALL WARRANTIES, EXPRESS AND IMPLIED, INCLUDING WITHOUT LIMITATION ANY IMPLIED WARRANTIES OF MERCHANTABILITY, FITNESS FOR A PARTICULAR PURPOSE OR NON-INFRINGEMENT OF THIRD PARTY INTELLECTUAL PROPERTY RIGHTS.

These resources are intended for skilled developers designing with TI products. You are solely responsible for (1) selecting the appropriate TI products for your application, (2) designing, validating and testing your application, and (3) ensuring your application meets applicable standards, and any other safety, security, regulatory or other requirements.

These resources are subject to change without notice. TI grants you permission to use these resources only for development of an application that uses the TI products described in the resource. Other reproduction and display of these resources is prohibited. No license is granted to any other TI intellectual property right or to any third party intellectual property right. TI disclaims responsibility for, and you will fully indemnify TI and its representatives against, any claims, damages, costs, losses, and liabilities arising out of your use of these resources.

TI's products are provided subject to [TI's Terms of Sale](#) or other applicable terms available either on [ti.com](https://www.ti.com) or provided in conjunction with such TI products. TI's provision of these resources does not expand or otherwise alter TI's applicable warranties or warranty disclaimers for TI products.

TI objects to and rejects any additional or different terms you may have proposed.

Mailing Address: Texas Instruments, Post Office Box 655303, Dallas, Texas 75265

Copyright © 2025, Texas Instruments Incorporated