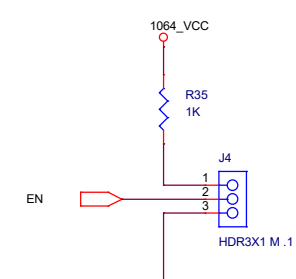
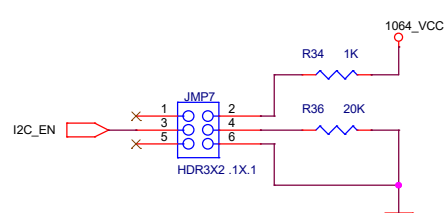
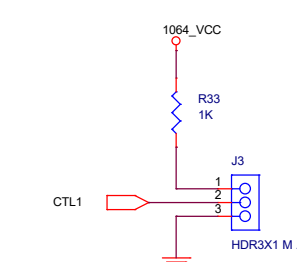
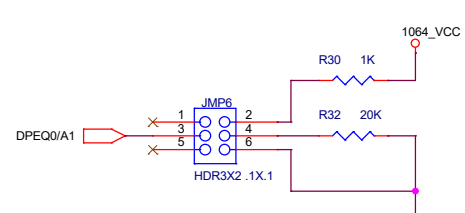
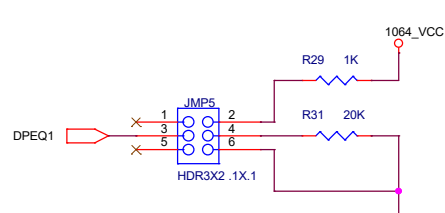
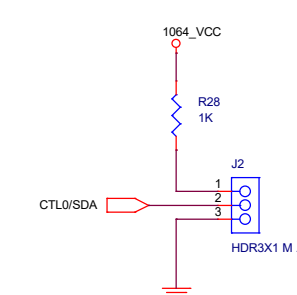
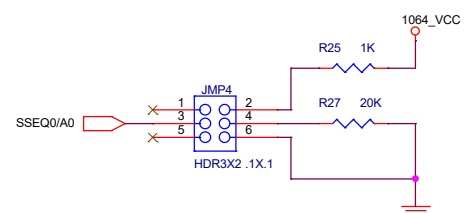
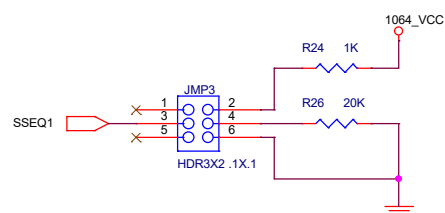
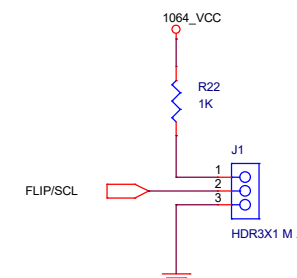
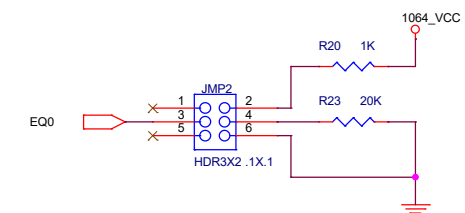
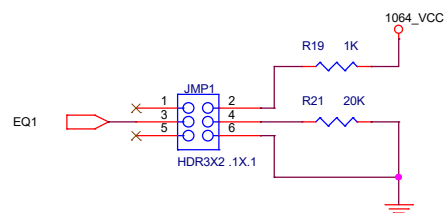
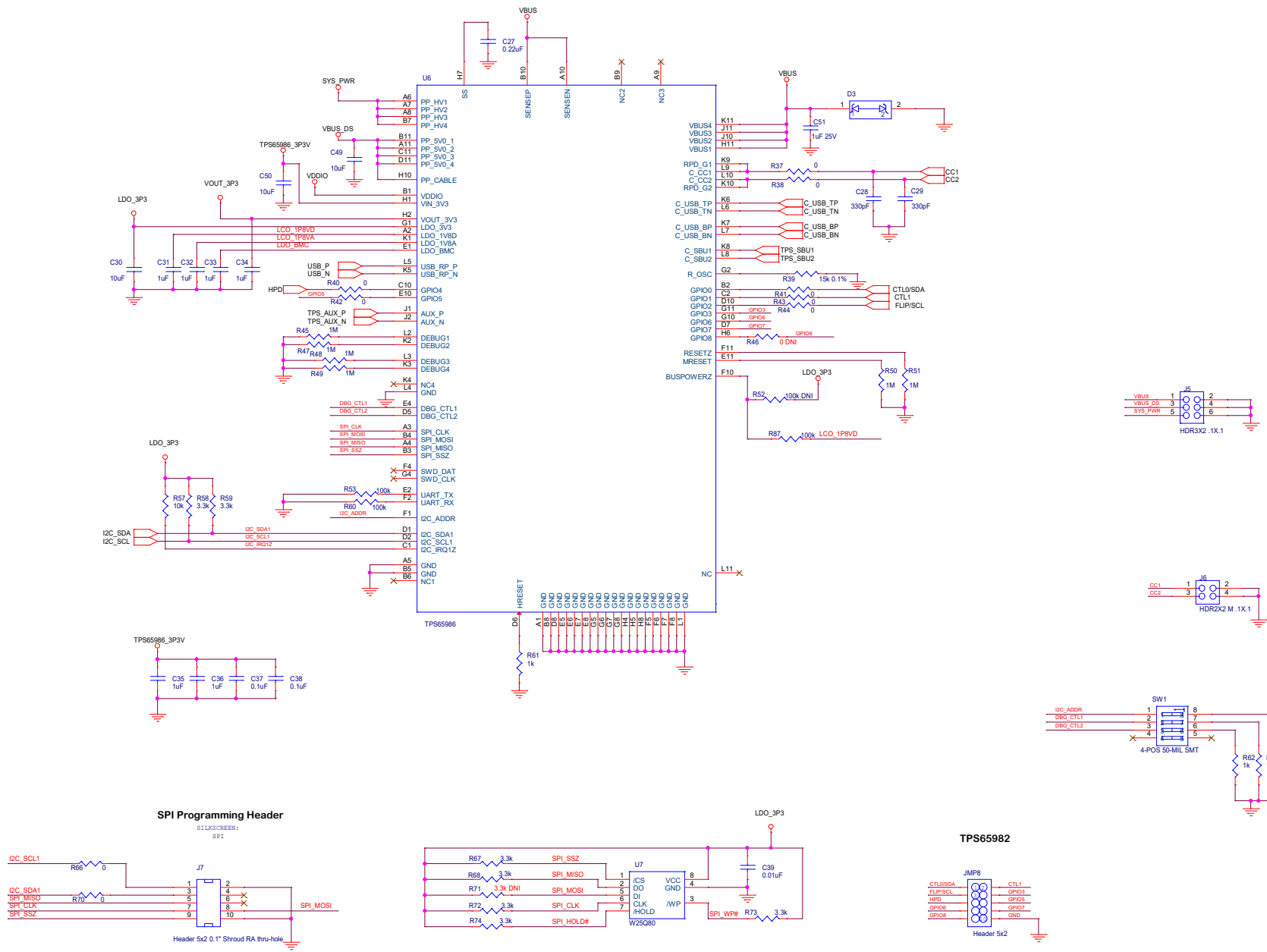


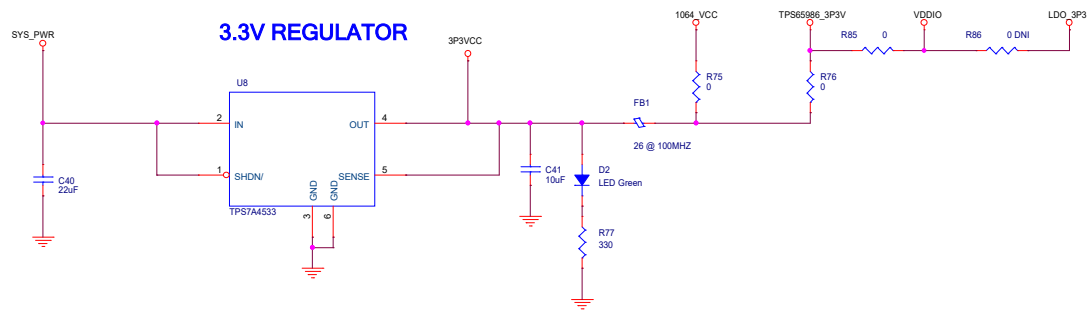
Title			
TUSB564EVM Block			
Size	Document Number		Rev
A	HSDC025A-001		A
Date:	Friday, March 02, 2018		Sheet 1 of 6



Title			TUSB564 Config Pins
Size	Document Number	Rev	
B	HSDC025A-001	A	
Date:	Friday, March 02, 2018	Sheet	3 of 6

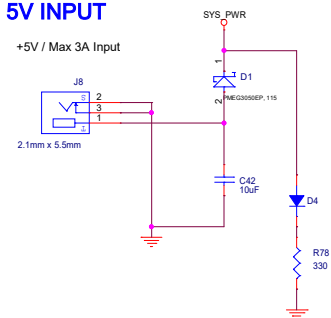


Title				TPS65986
Size				Document Number
C				HS0C025A-001
Date				Friday, March 02, 2018
Sheet				4 of 6
Rev				A

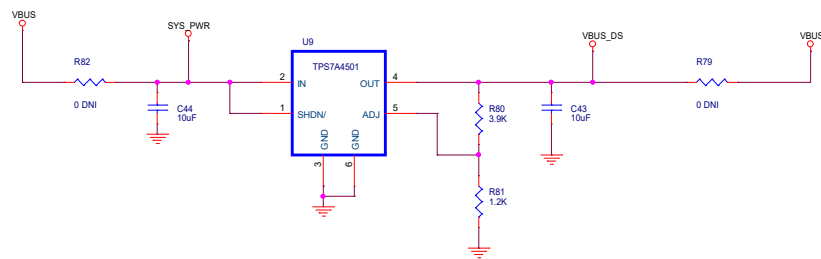


5V INPUT

+5V / Max 3A Input



DOWNSTREAM PORT/PP_5V POWER SWITCH



Title			Power
Size	Document Number	Rev	
C	HSDC025A-001	A	
Date	Friday, March 02, 2018	Sheet	5 of 6

LB2



LB2: TUSB1064RNQEV

PCB1



HSDC025

PCB LOGO
Texas Instruments

PCB LOGO
ESD1

PCB LOGO
FCC Disclaimer

PCB LOGO
CE and WEEE LOGO

Assembly Note:
Remove pins 1 and 5 from JMP1 - JMP7.

Mounting Hole Mounting Hole Mounting Hole Mounting Hole



SCRW1



SCRW2



SCRW3



SCRW4



STDOFF1



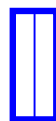
STDOFF2



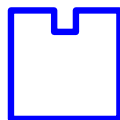
STDOFF3



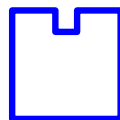
STDOFF4



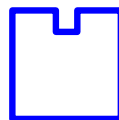
SHNT1



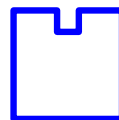
SHNT2



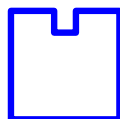
SHNT3



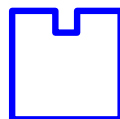
SHNT4



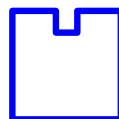
SHNT5



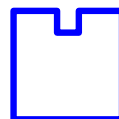
SHNT6



SHNT7



SHNT8



Title

Hardware

Size
A

Document Number
HSDC025A-001

Rev
B

Date: Friday, March 02, 2018

Sheet 6 of 6