

REVISIONS			
REV	DESCRIPTION	APPRVD	DATE
A	INITIAL RELEASE		02-25-11

NOTES: _____ UNLESS OTHERWISE SPECIFIED

1. MATERIAL: PER IPC-4101/24.

A. LAMINATE: TYPE GFN, GRADE A, CLASS 2, AND TYPE FR-4

B. FINISHED BOARD: PER SHEET 3

C. ALL COPPER LAYERS MUST BE SPACED PER DETAIL "A".

D. BOARD THICKNESS IS MEASURED INCLUDING TOP AND BOTTOM SIDES FINISHED COPPER.
TIN, TIN/LEAD, OR GOLD PLATING.
SOLDERMASK, AND SILKSCREEN LEGEND
MUST NOT BE INCLUDED IN FINSHED BOARD THICKNESS.

E. ALL INNER LAYERS MUST BE OXIDE COATED.

2. THE CONDUCTOR PATTERN MUST BE ETCHED USING XXX.ART FILES 880600582-001 REV A SUPPLIED.

3. ALL CONDUCTOR LAYERS MUST BE REGISTERED WITHIN +/- .005 INCH FROM TRUE POSITION.

4. ALL EXTERNAL LAYERS CONDUCTOR WIDTH MUST BE WITHIN +/- .0015 INCH OR 15% OF ARTWORK
OR WHICHEVER IS SMALLER.
ALL INTERNAL LAYERS CONDUCTOR WIDTH MUST BE WITHIN +/- .0010 INCH OR 15% OF ARTWORK
OR WHICHEVER IS SMALLER.

5. BOARD MUST BE NC DRILLED USING DRILL DATA: NCDRILL.DAT AND NCDRILL.BIT SUPPLIED.

6. DRILL TOLERANCES AND HOLES SIZE ARE FOR FINISHED BOARD.

7. ALL HOLES MUST BE REGISTERED WITHIN +/- .003 INCH FROM TRUE POSITION.

8. MINIMUM ANNULAR RING MUST BE .002 INCH.

9. PLATING:

A. PER MIL-C-14550, PLATED THROUGH HOLES MUST BE
PLATED WITH .0008 MIN. TO .0015 MAX INCH THICK COPPER.

B. PER MIL-G-45204, IMMERSION GOLD .000002 TO .000007 INCHES OVER
.000150 TO .000200 INCHES OF ELECTROLESS NICKEL.

NO INTERNAL LAYERS ARE TO BE GOLD PLATED.

10. IMPEDANCE PER SHEET 3:

TRACE WIDTH AND LAYER SPACING MAY BE CHANGED TO ACCOMMODATE FABRICATION PROCESS BUT
PRIOR APPROVAL IS REQUIRED BEFORE TRACE WIDTH OR LAYER SPACING CHANGES ARE MADE.

11. NO SPACING GAUGE AT BOARD EDGE.

12. WARP AND TWIST OF FINISHED BOARDS MUST NOT EXCEED .007 INCH PER INCH.

13. SOLDERMASK: PER IPC-SM-840

A. SOLDERMASK BOTH TOP AND BOTTOM SIDES.

B. SOLDERMASK MUST CLEAR ALL LANDS SHOWN ON GERBER SOLDERMASK LAYERS.

C. COLOR GREEN AND SOLVENT FREE.

D. LIQUID PHOTO-IMAGEABLE MUST BE .0002 MIN. TO .0008 MAX. INCH THICK.

14. SILKSCREEN TOP AND BOTTOM SIDES USING A GLOSSY WHITE, NONCONDUCTIVE, EPOXY BASED INK.
NO SILKSCREEN ALLOWED ON GOLD PLATED AREAS OR IN HOLES.

15. ROUTE BOARD OUTLINE, PER DRAWING DIMENSIONS.

16. VENDOR MUST ENTER VENDOR'S IDENTITY, DATE CODE, AND ALL OTHER ID ON BOTTOM SIDE ETCH
APPROXIMATELY WHERE SHOWN.

17. OTHER VENDOR NOMENCLATURE OR MARKINGS SHOULD NOT BE ETCHED OR
SILKSCREENED ON BOARD WITHOUT PRIOR PERMISSION.

18. ALL VENDOR IN-PROCESS MARKINGS, QA STAMPS, ETC.,
MUST BE PLACED ON THE BOTTOM SIDE OF BOARD.

19. FINISHED BOARD MUST MEET UL94V-0 RATING.

20. BOARDS MUST BE NETLIST TESTED FOR OPENS AND SHORTS USING: NETLIST.TXT


21. DOCUMENTATION THAT MUST BE DELIVERED WITH FABRICATED BOARDS.
CROSS SECTION REPORT (SPACING BETWEEN COPPER LAYERS AND COPPER THICKNESS)
ELECTRICAL TEST CERTIFICATION OF COMPLIANCE (ACCORDANCE WITH IPC-ET-652 CLASS II)
CERTIFICATION OF COMPLIANCE (BOARD HAS BEEN MANUFACTURED TO DRAWING REQUIREMENTS)
IMPEDANCE REPORT (REQUIRED IMPEDANCE TRACES PER NOTE 10)
RoHS CERTIFICATE OF COMPLIANCE
MICROSECTION CROSS SECTION
IONIC CONTAMINATION REPORT (IF APPLICABLE)

22. MUST DELIVER SOLDER SAMPLE BOARD FOR MECHANICAL CHECKING.

BOARD FABRICATION INFORMATION	
	NOMINAL SMALLEST
AIR GAP	.005
TRACE SIZE	.008
HOLE SIZE	.013
PAD SIZE	.020x.025 RECT
SUFRACE MOUNT TOP AND BOTTOM	

UNLESS OTHERWISE SPECIFIED		SIGNATURES		DATE
DO NOT SCALE DRAWING		DRAWN BY:		
DIMENSIONS ARE IN INCHES		CHECKED BY:		
TOLERANCES ON: 2 PL DECIMALS ± .01 3 PL DECIMALS ± .005 ANGLES 1°		APPRVD BY:		
MATERIAL: SEE NOTES		APPRVD BY:		
FINISH: SEE NOTES				

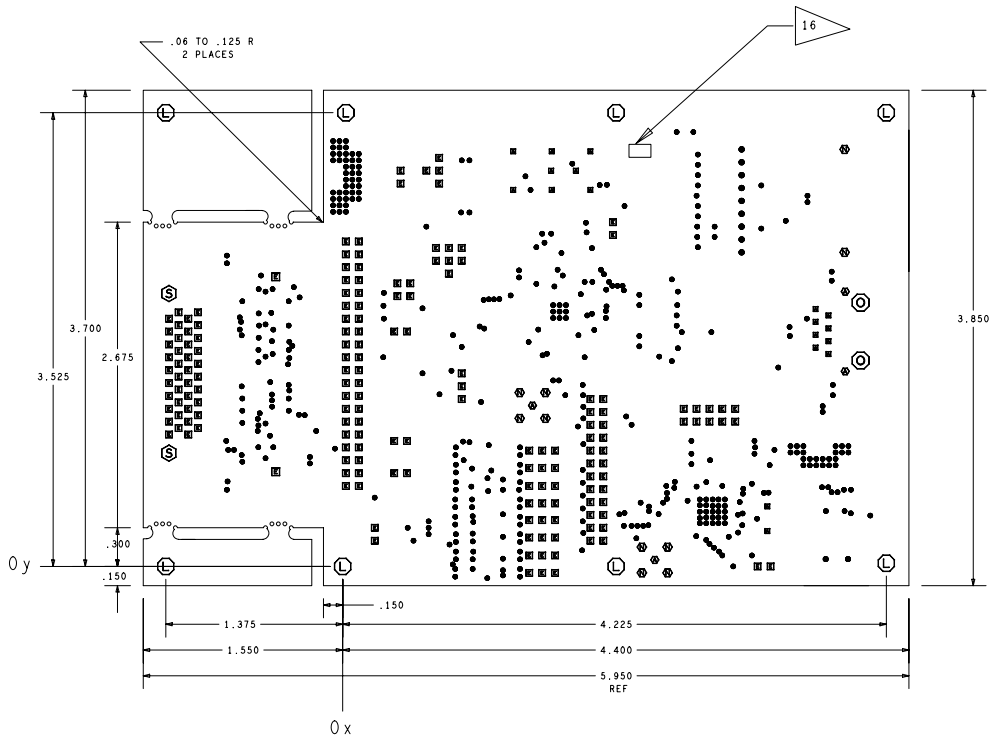
NSC CONFIDENTIAL
DO NOT COPY, DISPLAY, OR USE DRAWING
WITHOUT NSC AUTHORIZATION

 **National Semiconductor™**
INTERFACE DIVISION

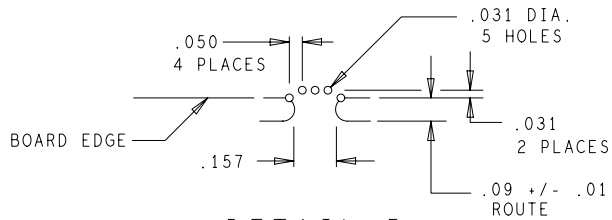
PCB FABRICATION DRAWING
DP83620 SQ48A
PHYTER HP TP/FX DEMO

B DWG 551600596-001 A

SCALE: NONE SHEET 1 OF 3 REV



VIEWED FROM TOP SIDE



FINISHED HOLE CHART				
ALL UNITS ARE IN MILS				
FIGURE	SIZE	TOLERANCE	PLATED	QTY
•	13.0	+3.0/-3.0	PLATED	421
•	17.72	+3.0/-3.0	PLATED	2
•	32.0	+3.0/-3.0	PLATED	9
■	36.0	+3.0/-3.0	PLATED	18
■	40.0	+3.0/-3.0	PLATED	170
•	62.0	+3.0/-3.0	PLATED	4
•	75.0	+3.0/-3.0	PLATED	10
⊙	125.0	+3.0/-3.0	PLATED	8
■	40.0	+2.0/-2.0	NON-PLATED	2
Ⓢ	106.0	+2.0/-2.0	NON-PLATED	2
⊙	128.0	+2.0/-2.0	NON-PLATED	2



PCB FABRICATION DRAWING
DP83620 SQ48A
PHYTER HP TP/FX DEMO

NSC CONFIDENTIAL
DO NOT COPY, DISPLAY, OR USE DRAWING
WITHOUT NSC AUTHORIZATION

B DWG 551600596-001 A
SCALE: NONE SHEET 2 OF 3 REV

+/- 10% 50 OHM IMPEDANCE

TRACES .012
TOP ETCH (LAYER 1)
BOTTOM ETCH (LAYER 4)



.0002 - .0008 SOLDERMASK
.00016 - .00021 GOLD/NICKEL

.0018-.0021 FINISHED COPPER ——— TOP ETCH (LAYER 1)
.0012 (1 OZ) FINISHED COPPER ——— GND (LAYER 2)

.0012 (1 OZ) FINISHED COPPER ——— VCC (LAYER 3)
.0018-.0021 FINISHED COPPER ——— BOT ETCH (LAYER 4)

.00016 - .00021 GOLD/NICKEL
.0002 - .0008 SOLDERMASK

+/- 10% 90 OHM DIFFERENTIAL IMPEDANCE

TRACES .010
SPACES .010
TOP ETCH (LAYER 1)
BOTTOM ETCH (LAYER 4)



.007 (BETWEEN LAYERS 1 AND 2)

.038 +/- .010 (BETWEEN LAYERS 2 AND 3)

.007 (BETWEEN LAYERS 3 AND 4)

+/- 10% 100 OHM DIFFERENTIAL IMPEDANCE

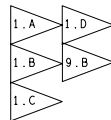
TRACES .008
SPACES .012
TOP ETCH (LAYER 1)
BOTTOM ETCH (LAYER 4)



.062 +/- .007

DETAIL A

LAYER STACK-UP
SCALE: NONE



PCB FABRICATION DRAWING
DP83620 SQ48A
PHYTER HP TP/FX DEMO

NSC CONFIDENTIAL
DO NOT COPY, DISPLAY, OR USE DRAWING
WITHOUT NSC AUTHORIZATION

B	DWG	551600596-001	A
SCALE: NONE		SHEET 3 OF 3	REV