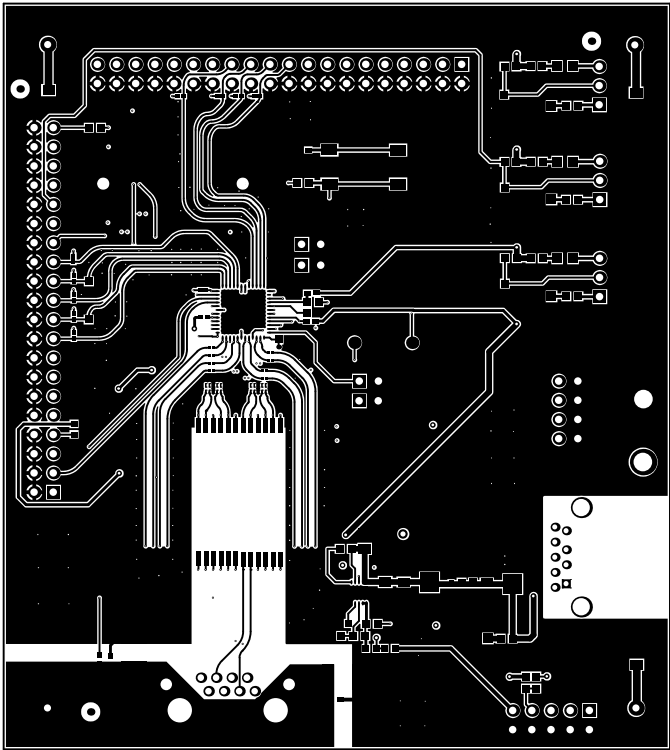
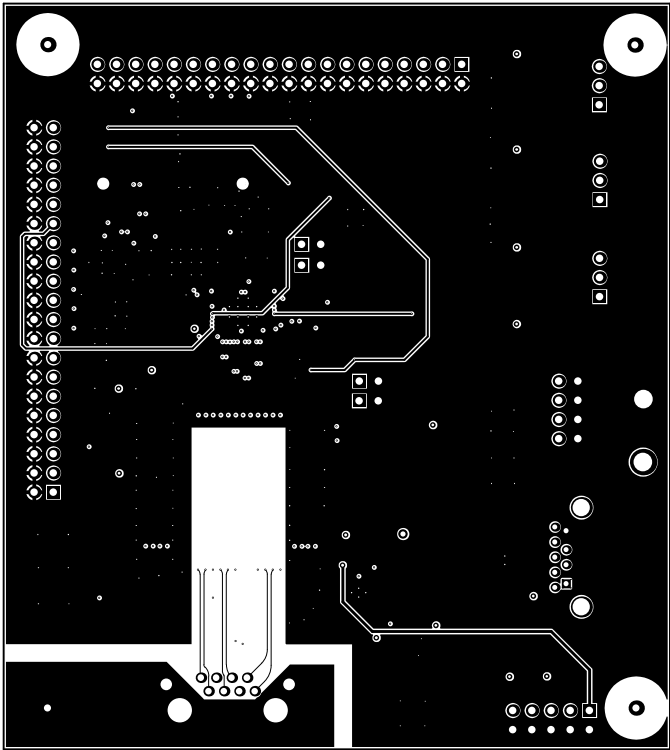


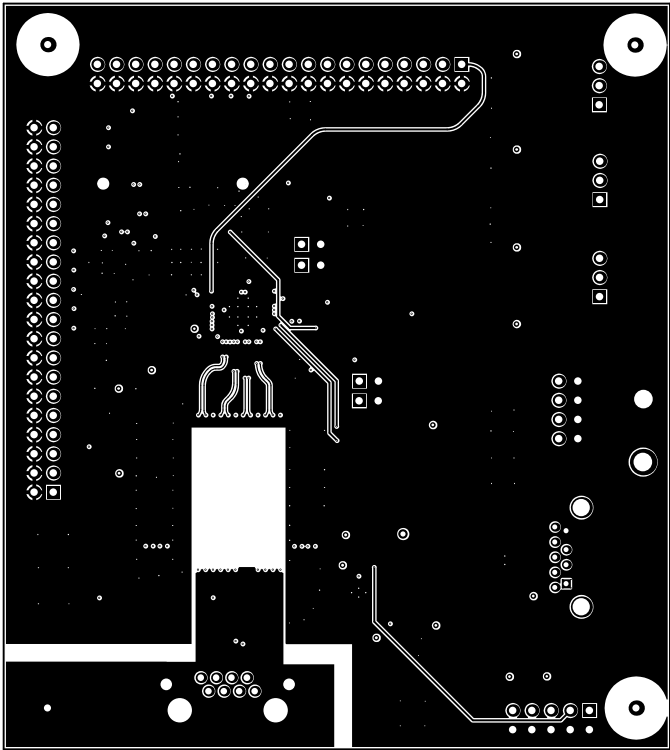
ALL ARTWORK VIEWED FROM TOP SIDE	BOARD #:	SU601189	REV:	A	SUN REV:	Not In VersionControl
LAYER NAME = Top Solder	TID #:	N/A				
PLOT NAME = Top Solder Mask	GENERATED	: 10/2/2015	2:25:00 PM	TEXAS INSTRUMENTS		



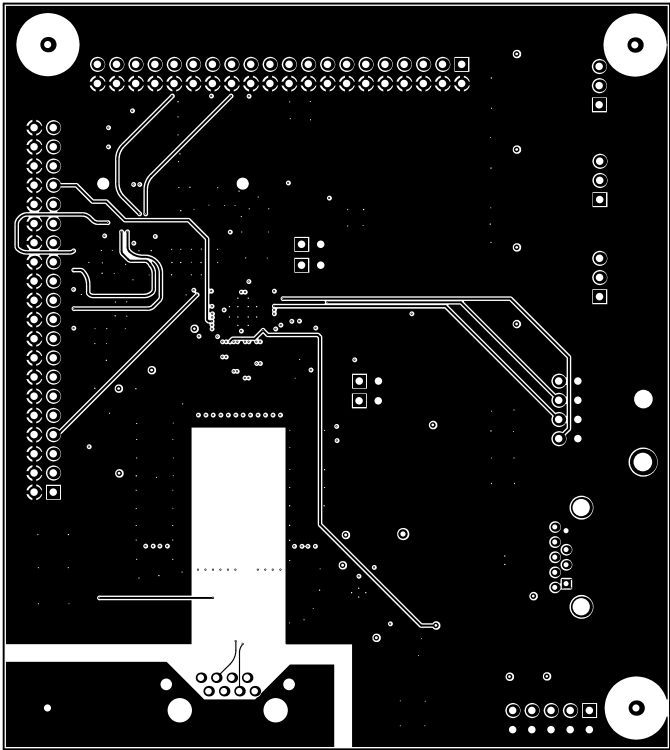
ALL ARTWORK VIEWED FROM TOP SIDE	BOARD #:	SU601189	REV:	A	SUN REV:	Not In VersionControl
LAYER NAME = Top Layer	TID #:	N/A				
PLOT NAME = Top Layer	GENERATED	: 10/2/2015	2:25:01 PM	TEXAS INSTRUMENTS		



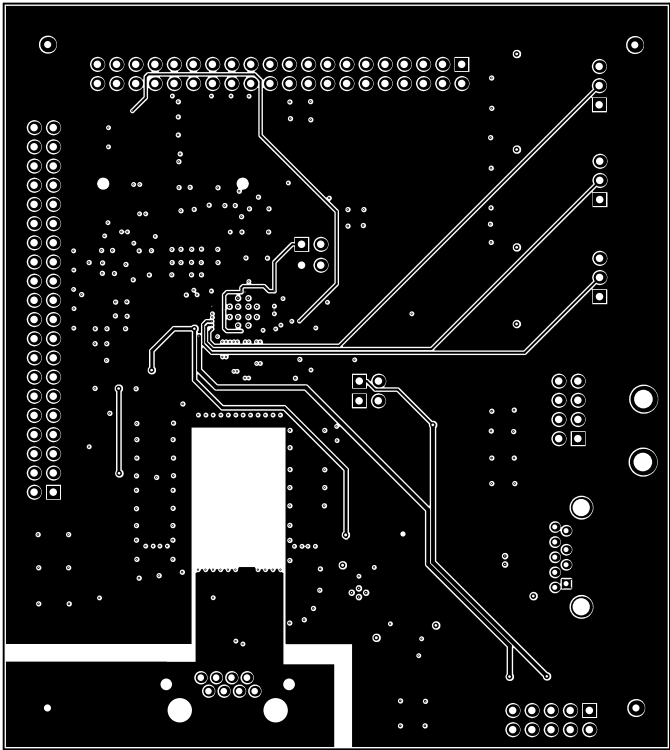
ALL ARTWORK VIEWED FROM TOP SIDE	BOARD #: SU601189	REV: A	SUN REV: Not In VersionControl
LAYER NAME =	TID #: N/A		
PLOT NAME = Signal Layer 1	GENERATED : 10/2/2015 2:25:03 PM	TEXAS INSTRUMENTS	



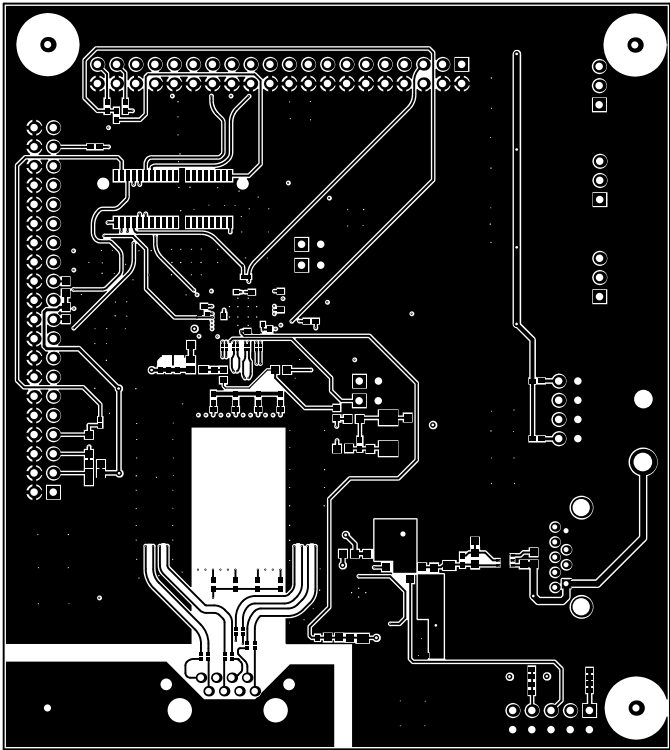
ALL ARTWORK VIEWED FROM TOP SIDE	BOARD #: SU601189	REV: A	SUN REV: Not In VersionControl
LAYER NAME =	TID #: N/A		
PLOT NAME = Signal Layer 2	GENERATED : 10/2/2015 2:25:04 PM	TEXAS INSTRUMENTS	



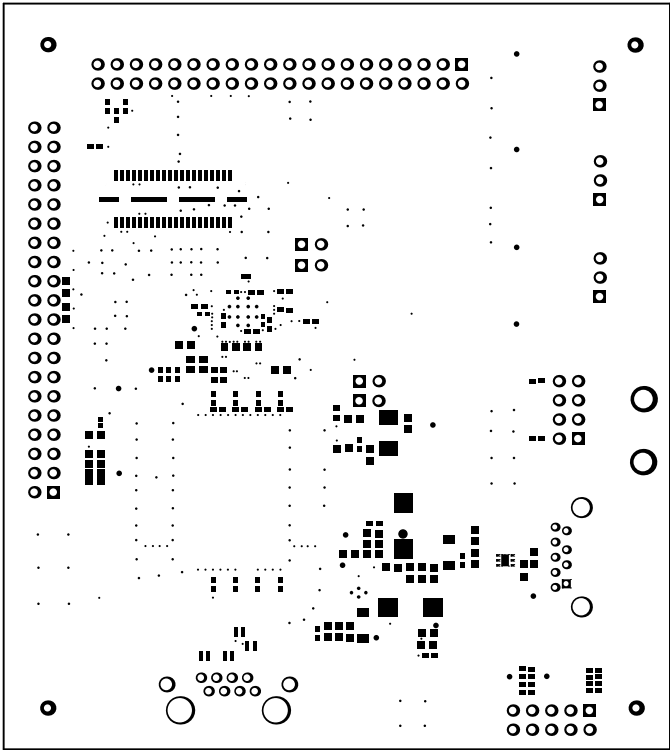
ALL ARTWORK VIEWED FROM TOP SIDE	BOARD #: SU601189	REV: A	SUN REV: Not In VersionControl
LAYER NAME =	TID #: N/A		
PLOT NAME = Signal Layer 3	GENERATED : 10/2/2015 2:25:06 PM	TEXAS INSTRUMENTS	



ALL ARTWORK VIEWED FROM TOP SIDE	BOARD #: SU601189	REV: A	SUN REV: Not In VersionControl
LAYER NAME =	TID #: N/A		
PLOT NAME = Signal Layer 4	GENERATED : 10/2/2015 2:25:07 PM	TEXAS INSTRUMENTS	

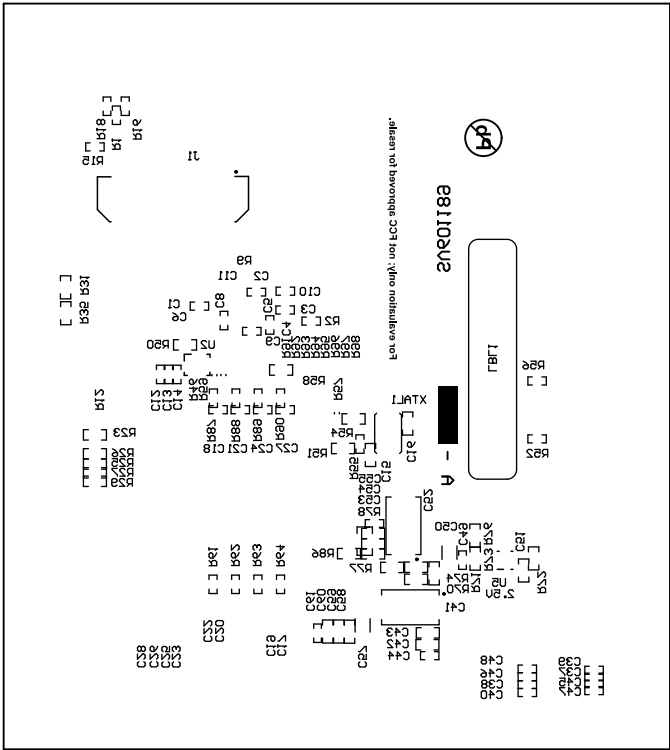


ALL ARTWORK VIEWED FROM TOP SIDE	BOARD #: SU601189	REV: A	SUN REV: Not In VersionControl
LAYER NAME = Bottom Layer	TID #: N/A		
PLOT NAME = Bottom Layer	GENERATED : 10/2/2015	2:25:09 PM	TEXAS INSTRUMENTS

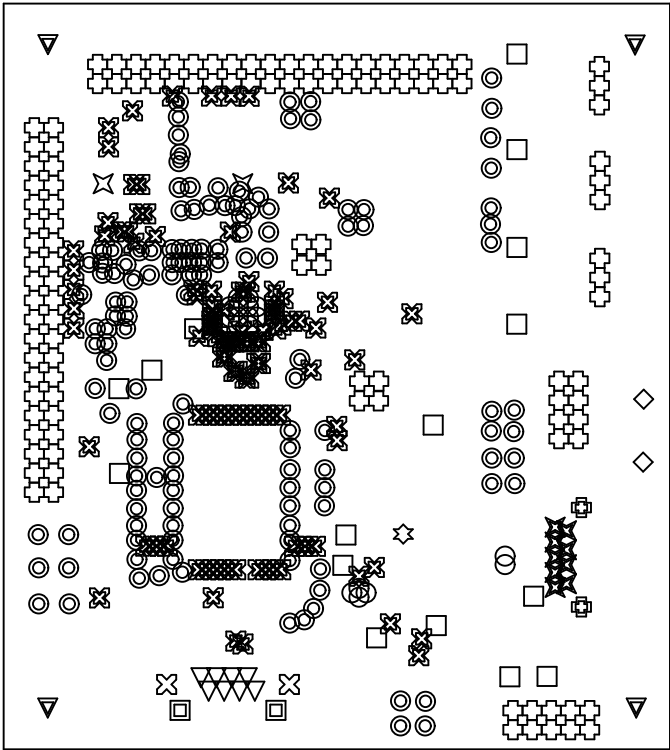


ALL ARTWORK VIEWED FROM TOP SIDE	BOARD #:	SU601189	REV:	A	SUN REV:	Not In VersionControl
LAYER NAME = Bottom Solder	TID #:	N/A				
PLOT NAME = Bottom Solder Mask	GENERATED	: 10/2/2015	2:25:10 PM	TEXAS INSTRUMENTS		

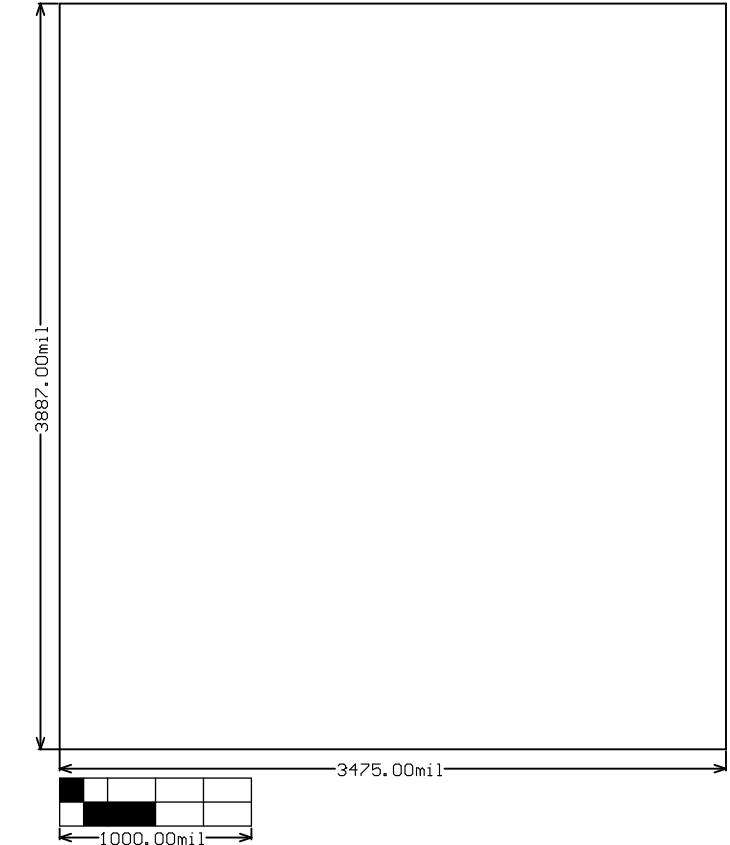
ALL ARTWORK VIEWED FROM TOP SIDE	BOARD #: SU601189	REV: A	SUN REV: Not In VersionControl
LAYER NAME = Bottom Overlay	TID #: N/A		
PLOT NAME = Bottom Overlay	GENERATED : 10/2/2015 2:25:12 PM		TEXAS INSTRUMENTS



Symbol	Hit Count	Finished Hole Size	Plated	Hole Type
✧	1	28.00mil (0.711mm)	PTH	Round
✧	2	39.37mil (1.000mm)	NPTH	Round
⊠	2	61.81mil (1.570mm)	PTH	Round
⊠	2	90.55mil (2.300mm)	PTH	Round
◇	2	98.43mil (2.500mm)	PTH	Round
▣	2	128.00mil (3.251mm)	PTH	Round
▼	4	37.99mil (0.965mm)	PTH	Round
▽	8	35.04mil (0.890mm)	PTH	Round
✕	9	27.56mil (0.700mm)	PTH	Round
□	16	15.00mil (0.381mm)	PTH	Round
○	18	7.87mil (0.200mm)	PTH	Round
⊗	115	6.00mil (0.152mm)	PTH	Round
⊕	115	40.00mil (1.016mm)	PTH	Round
⦿	136	7.00mil (0.178mm)	PTH	Round
	432 Total			



ALL ARTWORK VIEWED FROM TOP SIDE	BOARD #: SU601189	REV: A	SUN REV: Not In VersionControl
LAYER NAME = Drill Drawing	TID #: N/A		
PLOT NAME = Drill Drawing	GENERATED : 10/2/2015 2:25:13 PM	TEXAS INSTRUMENTS	



ALL ARTWORK VIEWED FROM TOP SIDE	BOARD #:	SU601189	REV:	A	SUN REV:	Not In VersionControl
LAYER NAME = M2 Board Dimensions	TID #:	N/A				
PLOT NAME = Board Dimensions	GENERATED	: 10/2/2015	2:25:15 PM	TEXAS INSTRUMENTS		