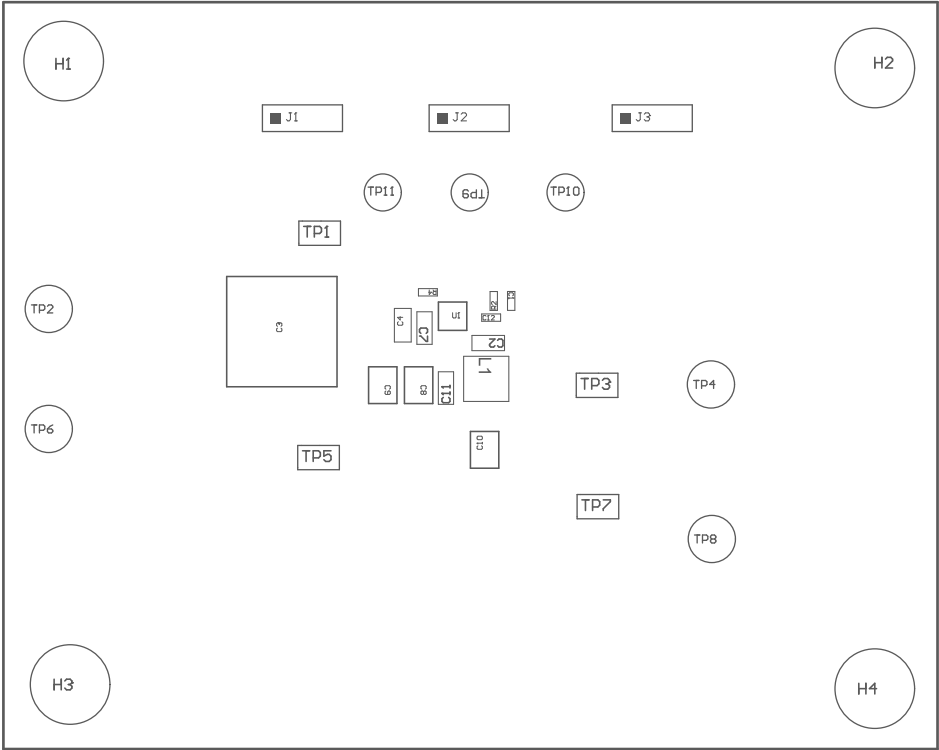
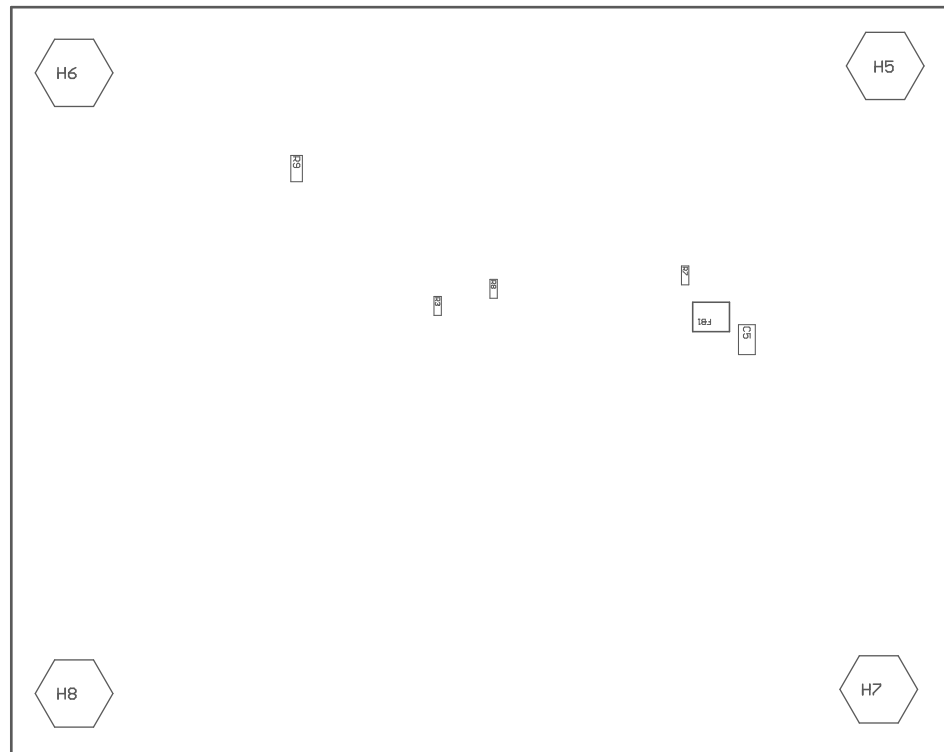


ZZ1 ■ These assemblies are ESD sensitive, ESD precautions shall be observed.
 ZZ2 ■ These assemblies must be clean and free from flux and all contaminants. Use of no clean flux is not acceptable.
 ZZ3 ■ These assemblies must comply with workmanship standards IPC-A-610 Class 2, unless otherwise specified.
 ZZ4 ■ Place SH-J1 across pins 1 and 2 of J1
 ZZ5 ■ Place SH-J2 across pins 1 and 2 of J2.
 ZZ6 ■ Place SH-J3 across pins 1 and 2 of J3.



COMPONENTS MARKED 'DNP' SHOULD NOT BE POPULATED.
 ASSEMBLY VARIANT: 001

PCB VIEWED FROM TOP SIDE	BOARD #: SR019	REV: A	SUN REV: Not in version control
	TID #: N/A		
PLOT NAME = Top Assembly Drawing	GENERATED : 3/16/2023 11:52:04 AM	TEXAS INSTRUMENTS	



COMPONENTS MARKED 'DNP' SHOULD NOT BE POPULATED.
ASSEMBLY VARIANT: 001

PCB VIEWED FROM BOTTOM SIDE	BOARD #: SR019	REV: A	SUN REV: Not in version control
	TID #: N/A		
PLOT NAME = Bottom Assembly Drawing	GENERATED : 3/16/2023 11:52:05 AM		TEXAS INSTRUMENTS