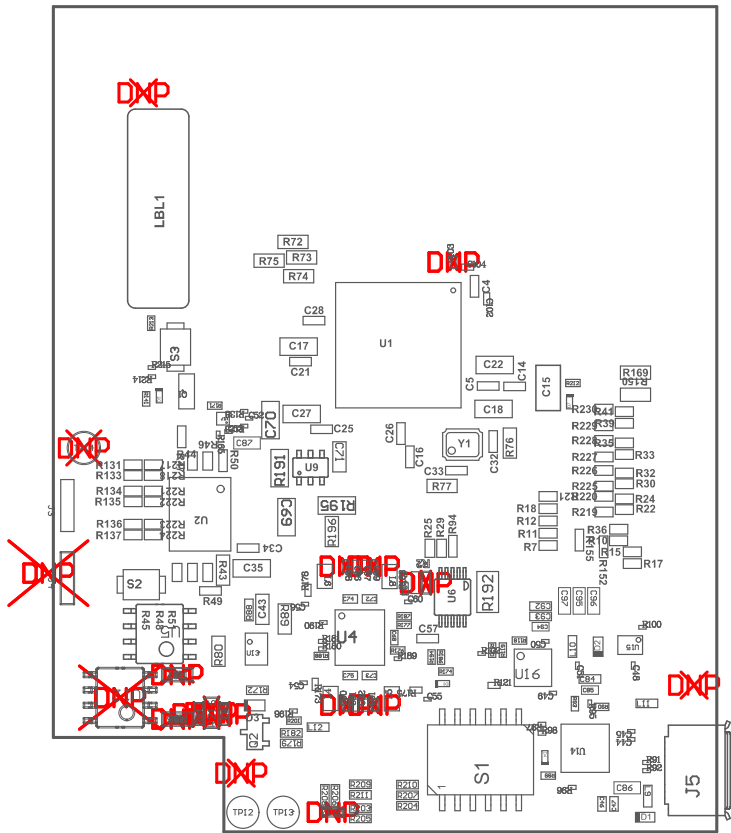
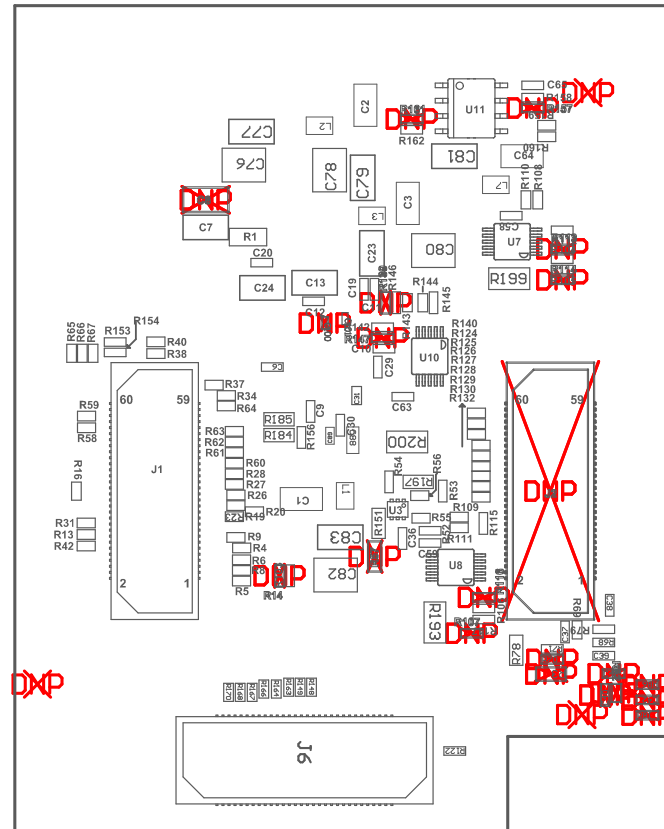


ZZ1 ■Install label in silkscreened box after final wash. Text shall be 8 pt font. Text shall be per the Label Table in the PDF schematic.
ZZ2 ■These assemblies are ESD sensitive, ESD precautions shall be observed.
ZZ3 ■These assemblies must be clean and free from flux and all contaminants. Use of no clean flux is not acceptable.
ZZ4 ■These assemblies must comply with workmanship standards IPC-A-610 Class 2, unless otherwise specified.
ZZ5 ■INDICATION FOR COMPONENTS D* ARE GIVEN AT THEIR CATHODE SIDE.



COMPONENTS MARKED 'DNP' SHOULD NOT BE POPULATED.
ASSEMBLY VARIANT: 001_IWR

PCB VIEWED FROM TOP SIDE	BOARD #: PROC073	REV: D	SVN REV: Not In VersionControl
Assembly Layer Top	TID #: N/A		
PLOT NAME = Top Assembly Drawing	GENERATED : 12-06-2020 16:12:29	TEXAS INSTRUMENTS	



COMPONENTS MARKED 'DNP' SHOULD NOT BE POPULATED.
 ASSEMBLY VARIANT: 001_IWR

PCB VIEWED FROM BOTTOM SIDE	BOARD #: PROC073	REV: D	SVN REV: Not In VersionControl
Assembly Bottom Layer	TID #: N/A		
PLOT NAME = Bottom Assembly Drawing	GENERATED : 12-06-2020 16:12:29	TEXAS INSTRUMENTS	