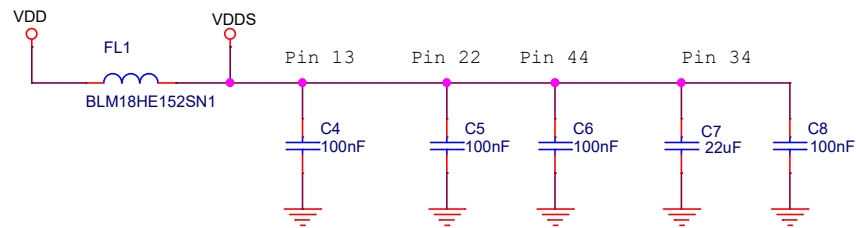
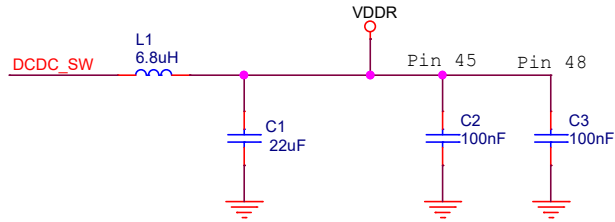


Wireless MCU RF

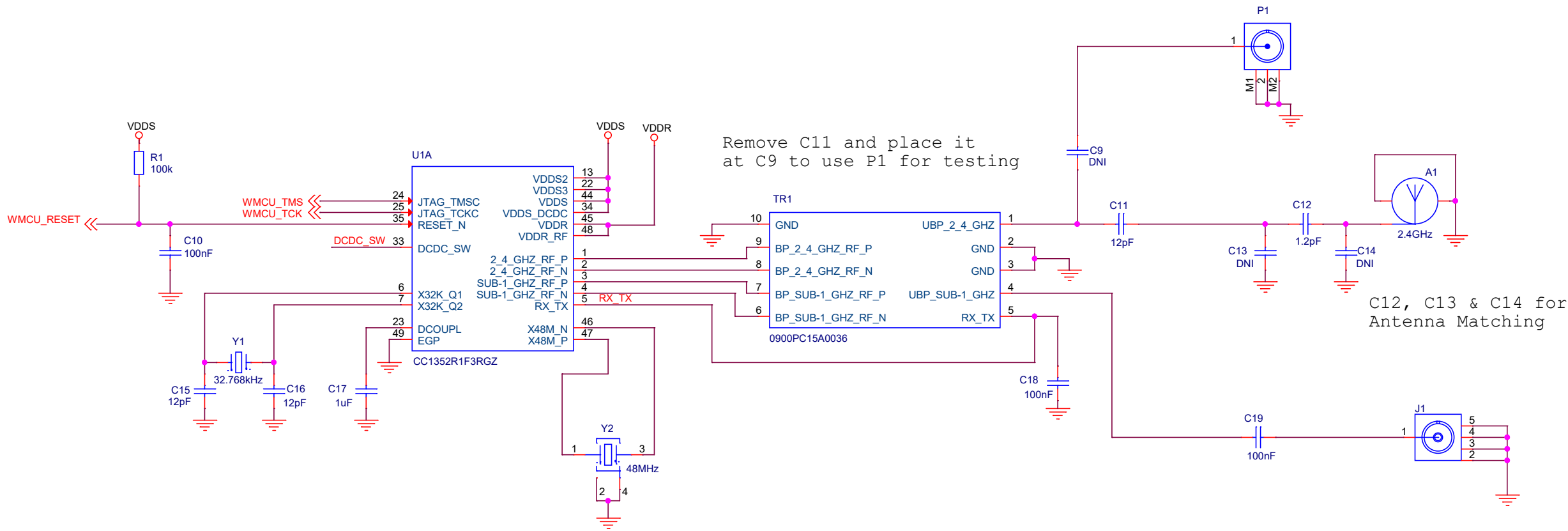
VDDS Decoupling Capacitors



VDDR Decoupling Capacitors

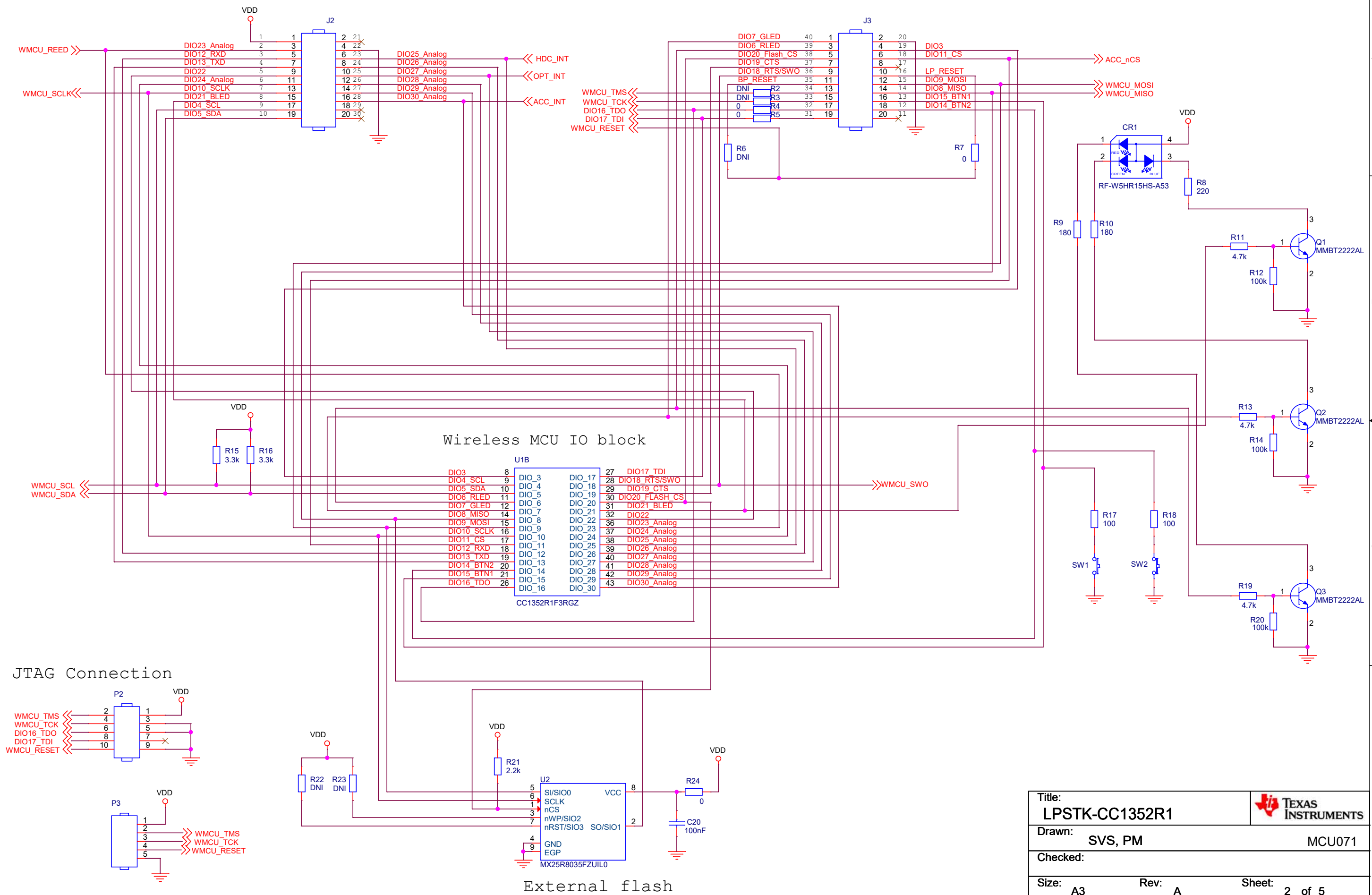



Place L1 and C1 close to pin 33.
Low inductance ground for C1



Wireless MCU IO block placed on page 2.

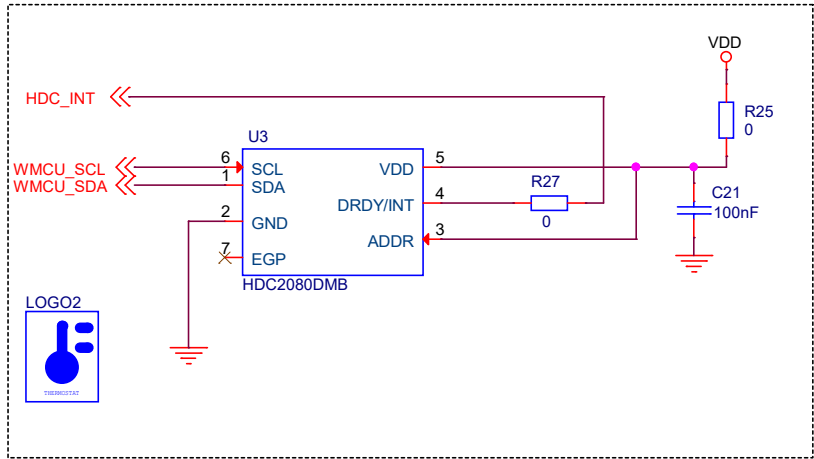
BoosterPack Headers and Peripherals



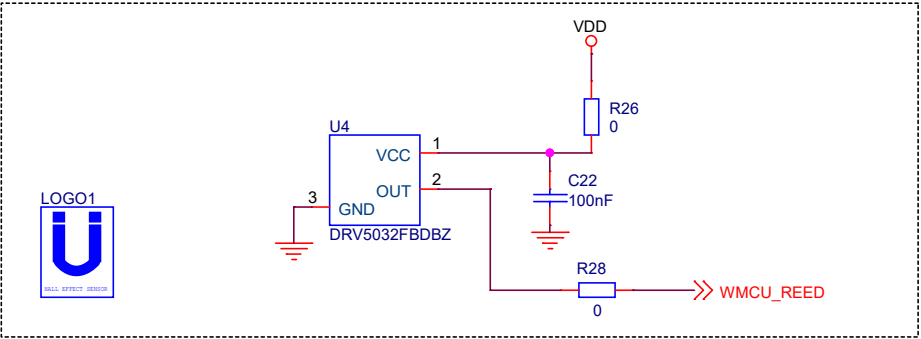
Title: LPSTK-CC1352R1		 TEXAS INSTRUMENTS	
Drawn: SVS, PM			MCU071
Checked:			
Size: A3	Rev: A	Sheet: 2 of 5	
Date: Wednesday, October 02, 2019			

SENSORS

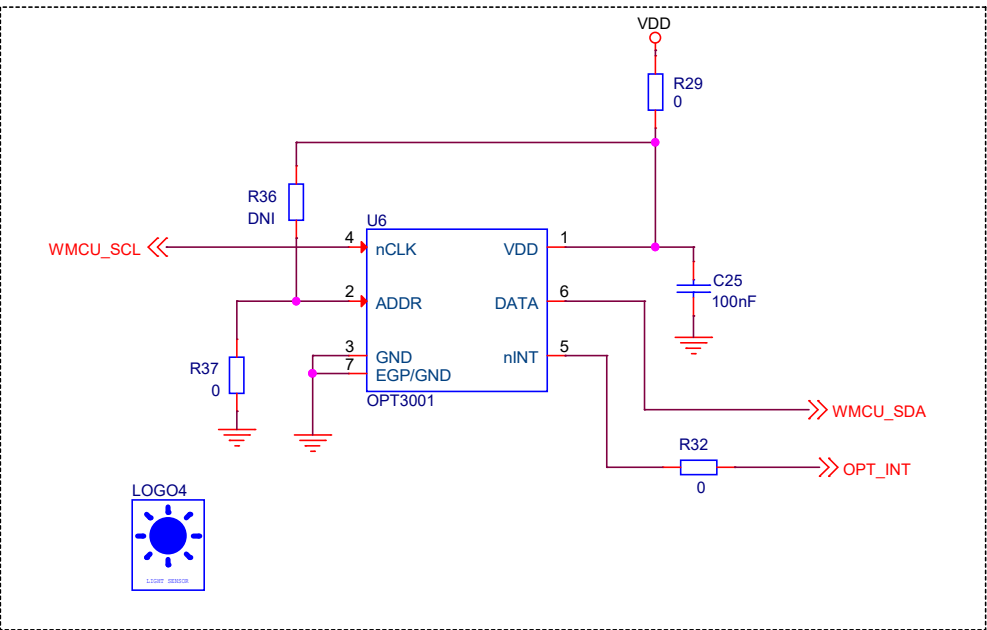
Humidity and Temperature Sensor



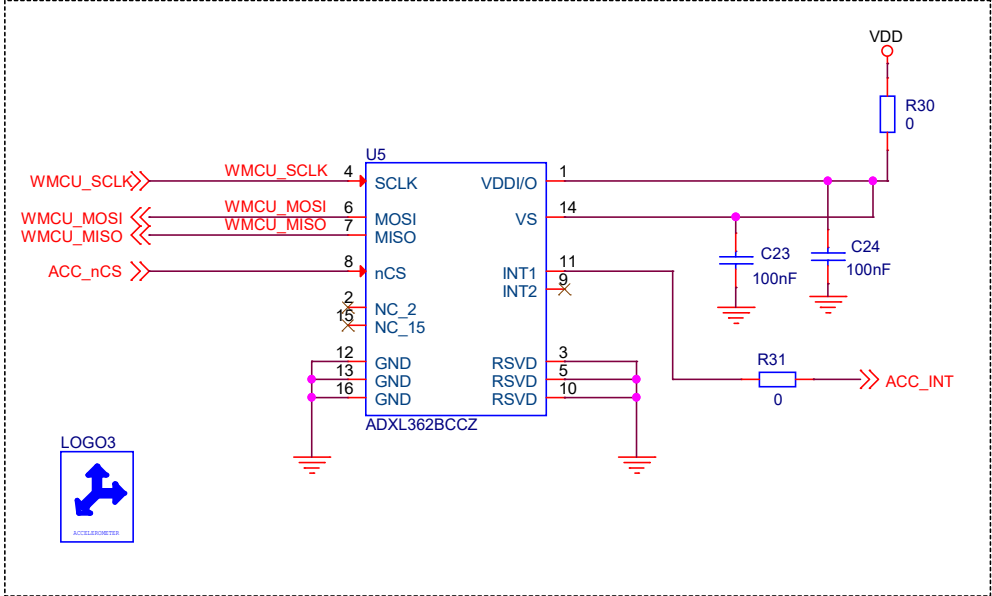
Hall Effect Sensor



Ambient Light Sensor

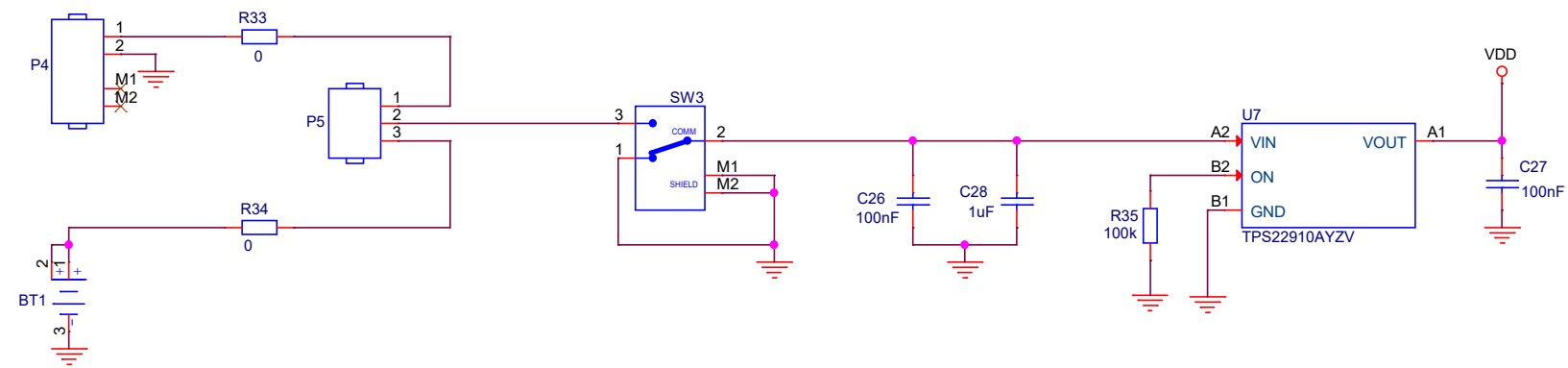



Accelerometer



BATTERY

Main Supply From AAA Battery



Title: LPSTK-CC1352R1		 TEXAS INSTRUMENTS	
Drawn: SVS, PM		MCU071	
Checked:			
Size: A3	Rev: A	Sheet: 4 of 5	
Date:		Wednesday, October 02, 2019	

HARDWARE

Rev	Description	Date
E1	Initial Version	2018/11/12
E2	Updated with IPC	2019/05/22
A	Production Release Version	2019/09/04

LOGOS

LOGO5



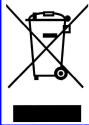
LOGO6



LOGO7



LOGO8



LOGO9



LOGO10



Jumper to be mounted on P5

FIDU1



FIDU2



FIDU3



FIDU4



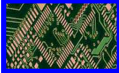
FIDU5




FIDU6



PCB1



As Per Fab Drawing-MCU071

Title: LPSTK-CC1352R1		 TEXAS INSTRUMENTS	
Drawn: SVS, PM		MCU071	
Checked:			
Size: A3	Rev: A	Sheet: 5 of 5	
Date:		Wednesday, October 02, 2019	