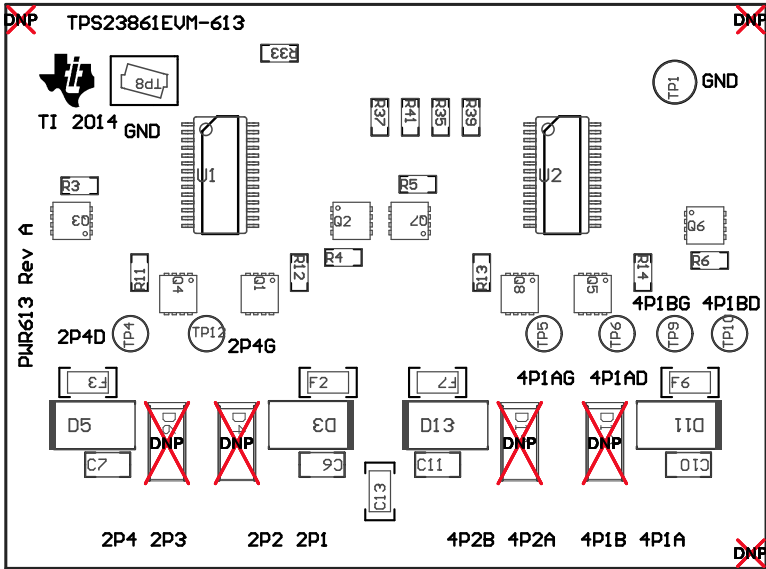
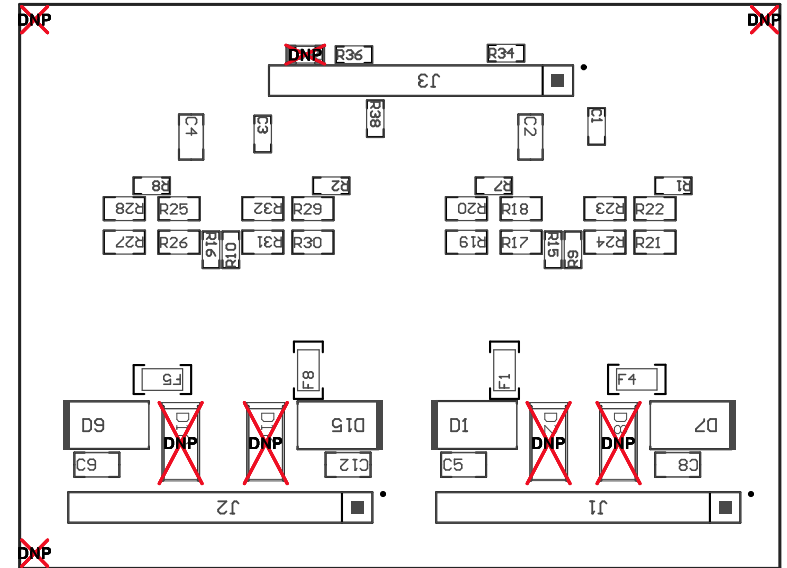


- ZZ1 ■ These assemblies are ESD sensitive, ESD precautions shall be observed.
- ZZ2 ■ These assemblies must be clean and free from flux and all contaminants. Use of no clean flux is not acceptable.
- ZZ3 ■ These assemblies must comply with workmanship standards IPC-A-610 Class 2., unless otherwise specified.



COMPONENTS MARKED 'DNP' SHOULD NOT BE POPULATED.  
ASSEMBLY VARIANT: 001

|                                  |                                 |                   |                                |
|----------------------------------|---------------------------------|-------------------|--------------------------------|
| PCB VIEWED FROM TOP SIDE         | BOARD #: PWR613                 | REV: A            | SVN REV: Not In VersionControl |
| IGNORE -> Top Overlay            |                                 |                   |                                |
| PLOT NAME = Top Assembly Drawing | GENERATED : 2/7/2014 3:24:47 PM | TEXAS INSTRUMENTS |                                |



COMPONENTS MARKED 'DNP' SHOULD NOT BE POPULATED.  
 ASSEMBLY VARIANT: 001

|                                     |                                 |                   |                                |
|-------------------------------------|---------------------------------|-------------------|--------------------------------|
| PCB VIEWED FROM BOTTOM SIDE         | BOARD #: PWR613                 | REV: A            | SUN REV: Not In VersionControl |
|                                     | IGNORE -> Bottom Overlay        |                   |                                |
| PLOT NAME = Bottom Assembly Drawing | GENERATED : 2/7/2014 3:24:48 PM | TEXAS INSTRUMENTS |                                |