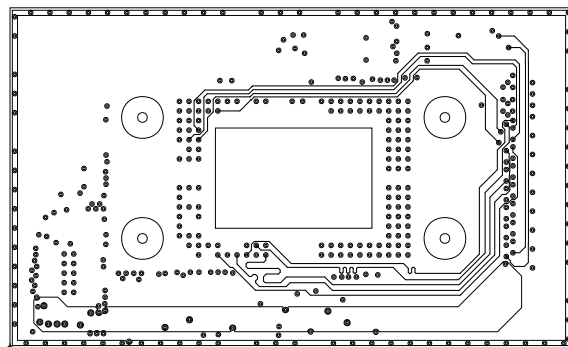


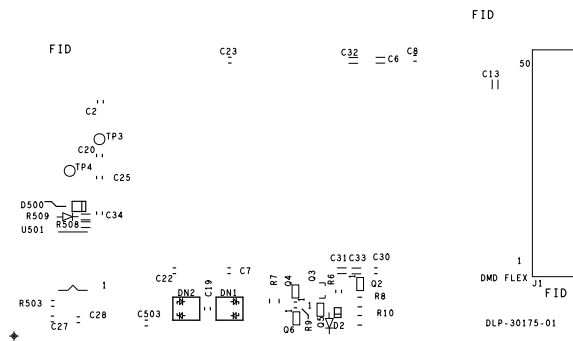
TEXAS INSTRUMENTS		
BOARD NAME:	TIDA-080006 DMD	
	DESCRIPTION: LAYER 6 - GND PLANE	
PROJECT #:	TIDA-080006	DATE: 08/02/2018
		REVISION:



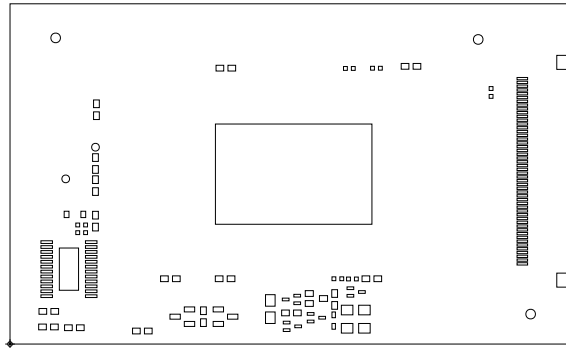
TEXAS INSTRUMENTS		
BOARD NAME:	TIDA-080006 DMD	DESCRIPTION: LAYER 5 - SIGNAL
PROJECT #:	TIDA-080006	DATE: 08/02/2018 REVISION:



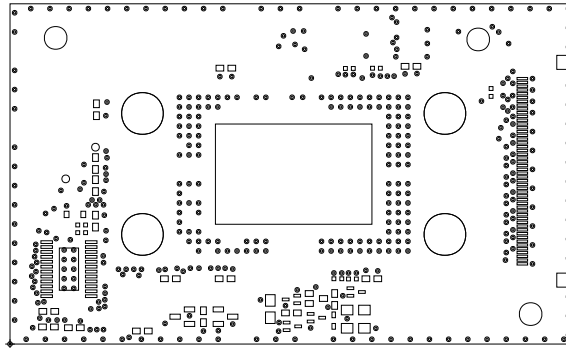
ART FILM - top



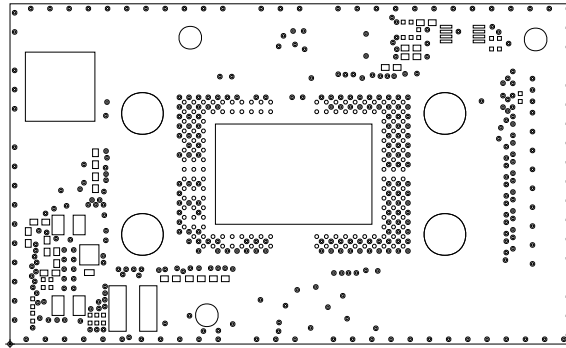
TEXAS INSTRUMENTS		
BOARD NAME:	TIDA-080006 DMD	
PROJECT #:	TIDA-080006	
DESCRIPTION:	SILKSCREEN TOP	
DATE:	08/02/2018	REVISION:



TEXAS INSTRUMENTS		
BOARD NAME:	TIDA-080006 DMD	DESCRIPTION: SOLDERPASTE TOP
PROJECT #:	TIDA-080006	DATE: 08/02/2018 REVISION:



TEXAS INSTRUMENTS		
BOARD NAME:	TIDA-080006 DMD	DESCRIPTION: SOLDERMASK TOP
PROJECT #:	TIDA-080006	DATE: 08/02/2018 REVISION:

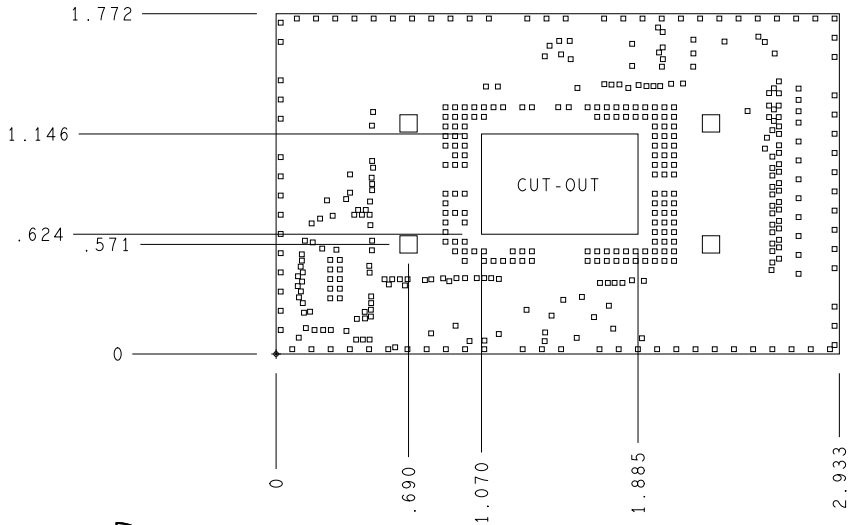


TEXAS INSTRUMENTS		
BOARD NAME:	TIDA-080006 DMD	DESCRIPTION: SOLDERMASK BOTTOM
PROJECT #:	TIDA-080006	DATE: 08/02/2018
		REVISION:

DRILL CHART: TOP to BOTTOM				
ALL UNITS ARE IN MILS				
FIGURE	SIZE	TOLERANCE	PLATED	QTY
◻	12.0	+3.0/-12.0	PLATED	410
□	217.0	+3.0/-3.0	NON-PLATED	4



LAYER	MINIMUM FINAL Cu WEIGHT
LAYER 1 PRIMARY SIDE	0.5 oz
.0045" DK 4.43 / DF 0.0210	
LAYER 2 PWR PLANE	1.0 oz
.0041" DK 4.54 / DF 0.0190	
LAYER 3 GND PLANE	1.0 oz
.0042" DK 4.51 / DF 0.0210	
LAYER 4 SIGNAL	0.5 oz
.0250" DK 4.58 / DF 0.0180	
LAYER 5 SIGNAL	0.5 oz
.0042" DK 4.51 / DF 0.0210	
LAYER 6 GND PLANE	1.0 oz
.0041" DK 4.54 / DF 0.0190	
LAYER 7 PWR PLANE	1.0 oz
.0045" DK 4.43 / DF 0.0210	
LAYER 8 SECONDARY SIDE	0.5 oz



PRIMARY SIDE VIEW



TEXAS INSTRUMENTS		
BOARD NAME:	TIDA-080006 DMD	DESCRIPTION: FABRICATION DRAWING
PROJECT #:	TIDA-080006	DATE: 08/02/2018 REVISION:

FAB NOTES:

- ALL DIMENSIONS ARE IN INCHES UNLESS OTHERWISE NOTED. ALL BOARD OUTLINE DIMENSION TOLERANCES ARE +/- .010".
- THE PWB SHALL BE FABRICATED TO IPC-6012, CLASS 2 AND WORKMANSHIP SHALL CONFORM TO IPC-A-600, CLASS 2. CURRENT REVISIONS.
- BOARD MATERIAL SHALL BE 180 Tg/340 Td ISOLA FR-370HR OR EQUIVALENT, RoHS COMPLIANT AND LEAD FREE ASSEMBLY CAPABLE. BOARD MATERIAL SHALL MEET OR EXCEED IPC-4101B. RoHS CERTIFICATE OF CONFORMANCE SHALL BE DELIVERED WITH EACH LOT.
- BOARD MATERIAL & CONSTRUCTION TO BE UL94V-0 APPROVED AND MARKED ON THE FINISHED BOARD.
- MINIMUM COPPER WALL THICKNESS OF PLATED-THRU HOLES TO BE .001 INCH, WITH A MINIMUM ANNULAR RING OF .001 INCH.
- OVERALL BOARD THICKNESS TO BE .062 +/- .005 AND APPLIES AFTER ALL LAMINATION AND PLATING PROCESSES. MEASURED FROM COPPER TO COPPER.
- INNER PLANE LAYERS TO BE 1 OZ. COPPER. INNER SIGNAL LAYERS TO BE 1/2 OZ. COPPER. OUTER LAYERS TO BE 1/2 OZ. COPPER PLUS PLATING TO AT LEAST 2 OZ.
- MAX. WARP & TWIST TO BE .0075 INCHES PER INCH.
- ALL HOLES ARE ON A 0.0001 GRID EXCEPT THOSE INDICATED.
- MAXIMUM RATED VOLTAGE BETWEEN CONDUCTORS SHALL BE 65 VOLTS PEAK.
- NO BREAKOUT ALLOWED ON PLATED THROUGH HOLES.
- FOIL OUTER OPTIONAL.
- INTERPRET DIMENSIONS IN ACCORDANCE WITH ASME Y14.5M-1994
- TEARDROP VIAS AS NECESSARY.

PROCESS NOTES:

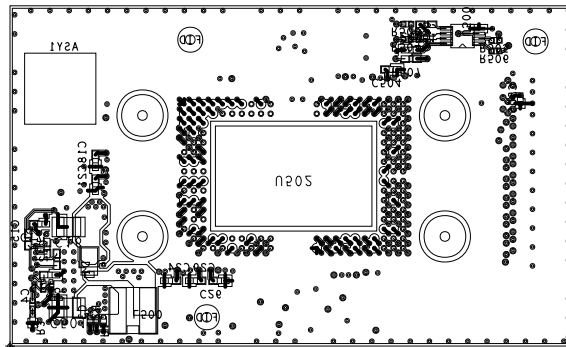
- EXCEPT AS NOTED BELOW, ALL EXPOSED CONDUCTORS ON BOTH SIDES PWB SHALL BE ELECTROLESS IMMERSION GOLD (2-6 MICROINCHES) OVER NICKEL (100 MIN MICROINCHES).
- APPLY LPI SOLDERMASK.
COLOR: MATTE BLACK
CONFORM TO IPC-SM-840, CLASS H. CURRENT REV.
- SOLDERMASK ARTWORK HAS ZERO (0) OVERSIZED PADS. FABRICATION VENDOR IS ALLOWED TO ADJUST THE COMPONENT SOLDERMASK PADS TO MEET THEIR TOOLING REQUIREMENTS WHILE MAINTAINING WEBBING BETWEEN ADJACENT PADS.
- APPLY LPI SILKSCREEN OR EQUIVALENT PER THE ARTWORK. COLOR: WHITE.
- BOARD MUST BE ELECTRICALLY TESTED USING SUPPLIED IPC-D-356 NETLIST.

CONTROLLED IMPEDANCE DESIGN

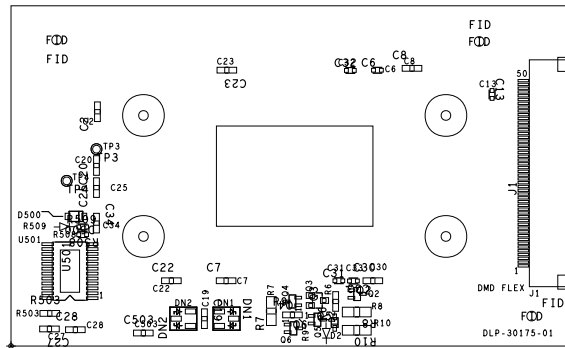
6.5 MIL LINES ON EXTERNAL LAYERS SHALL BE 50 OHMS
SINGLE ENDED IMPEDANCE +/-10%

5.5 MIL LINES ON INTERNAL LAYERS SHALL BE 50 OHMS
SINGLE ENDED IMPEDANCE +/-10%

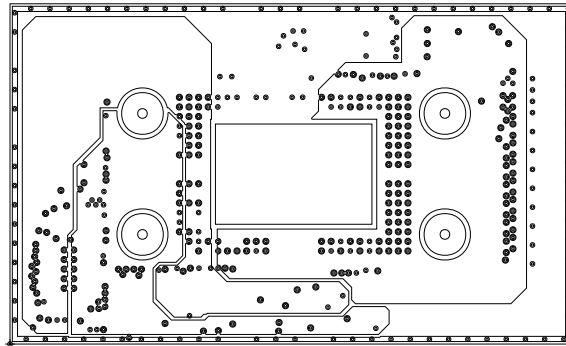
ADJUST DIELECTRIC THICKNESS TO MEET SPECIFIED IMPEDANCE.



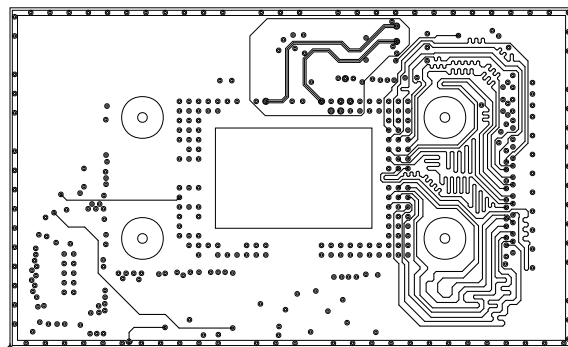
TEXAS INSTRUMENTS		
BOARD NAME:	TIDA-080006 DMD	DESCRIPTION: ASSEMBLY, BOTTOM SECONDARY SIDE
PROJECT #:	TIDA-080006	DATE: 08/02/2018 REVISION:



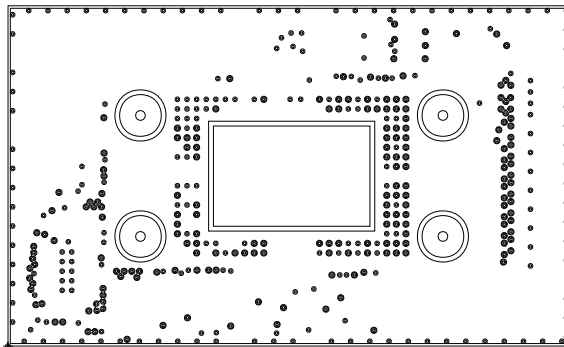
TEXAS INSTRUMENTS		
BOARD NAME:	TIDA-080006 DMD	DESCRIPTION: ASSEMBLY TOP
PROJECT #:	TIDA-080006	DATE: 08/02/2018
		REVISION:



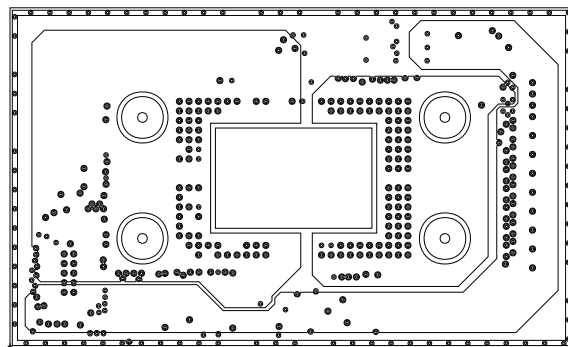
TEXAS INSTRUMENTS		
BOARD NAME:	TIDA-080006 DMD	DESCRIPTION: LAYER 2 - PWR PLANE
PROJECT #:	TIDA-080006	DATE: 08/02/2018 REVISION:



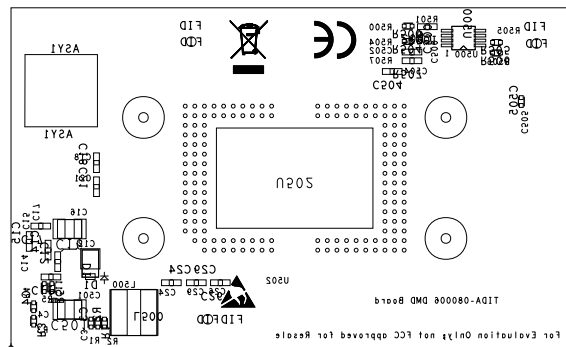
TEXAS INSTRUMENTS		
BOARD NAME:	TIDA-080006 DMD	DESCRIPTION: LAYER 4 - SIGNAL
PROJECT #:	TIDA-080006	DATE: 08/02/2018 REVISION:



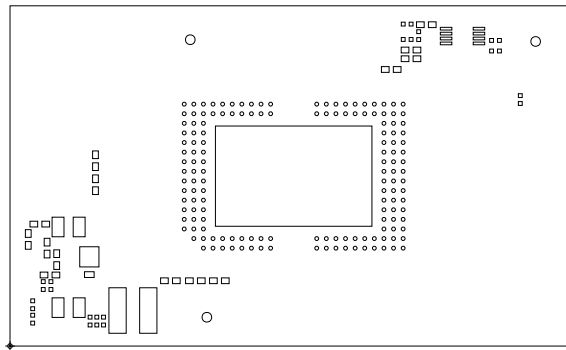
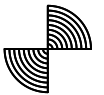
TEXAS INSTRUMENTS		
BOARD NAME:	TIDA-080006 DMD	
	DESCRIPTION:	LAYER 3 - GND PLANE
PROJECT #:	TIDA-080006	DATE: 08/02/2018
		REVISION:



TEXAS INSTRUMENTS		
BOARD NAME:	TIDA-080006 DMD	DESCRIPTION: LAYER 7 - PWR PLANE
PROJECT #:	TIDA-080006	DATE: 08/02/2018 REVISION:



TEXAS INSTRUMENTS			
BOARD NAME: TIDA-080006 DMD		DESCRIPTION: ASSEMBLY BOTTOM	
PROJECT #: TIDA-080006		DATE: 08/02/2018	REVISION:



TEXAS INSTRUMENTS		
BOARD NAME:	TIDA-080006 DMD	
	DESCRIPTION: SOLDERPASTE BOTTOM	
PROJECT #:	TIDA-080006	DATE: 08/02/2018
		REVISION:



ART FILM - ssb