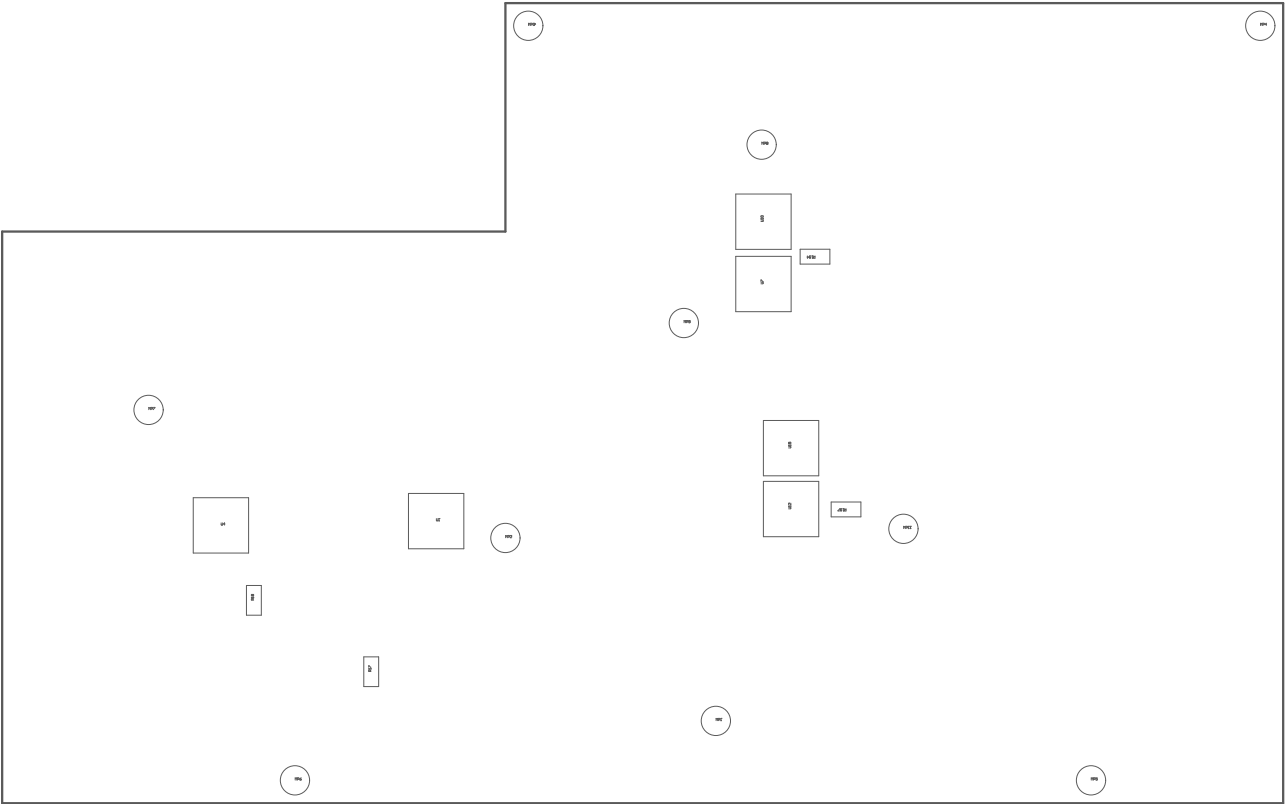


224 ■ These assemblies must comply with workmanship standards IPC-A-610 Class 2, unless otherwise specified.  
229 ■ These assemblies must be clean and free from flux and all contaminants. Use of no clean flux is not acceptable.  
222 ■ These assemblies are ESD sensitive, ESD precautions shall be observed.  
221 ■ Install label in silkscreened box after final wash. Text shall be 8 pt font. Text shall be per the Label Table in the PDF schematic.

COMPONENTS MARKED 'DNP' SHOULD NOT BE POPULATED.  
ASSEMBLY VARIANT: [No Variations]

PCB VIEWED FROM TOP SIDE	BOARD #: TIDA-010938	DC-4000: E2	SUN REV: Not in version control
PLOT NAME = Top Assembly Drawing	GENERATED : 1/16/2025	10:03:37 AM	TEXAS INSTRUMENTS



COMPONENTS MARKED 'DNP' SHOULD NOT BE POPULATED.  
ASSEMBLY VARIANT: [No Variations]

PCB VIEWED FROM BOTTOM SIDE	BOARD #: TIDA-010938	DC-REF: E2	SUN REV: Not in version control
PLOT NAME = Bottom Assembly Drawing	GENERATED : 1/16/2025	10:03:37 AM	TEXAS INSTRUMENTS