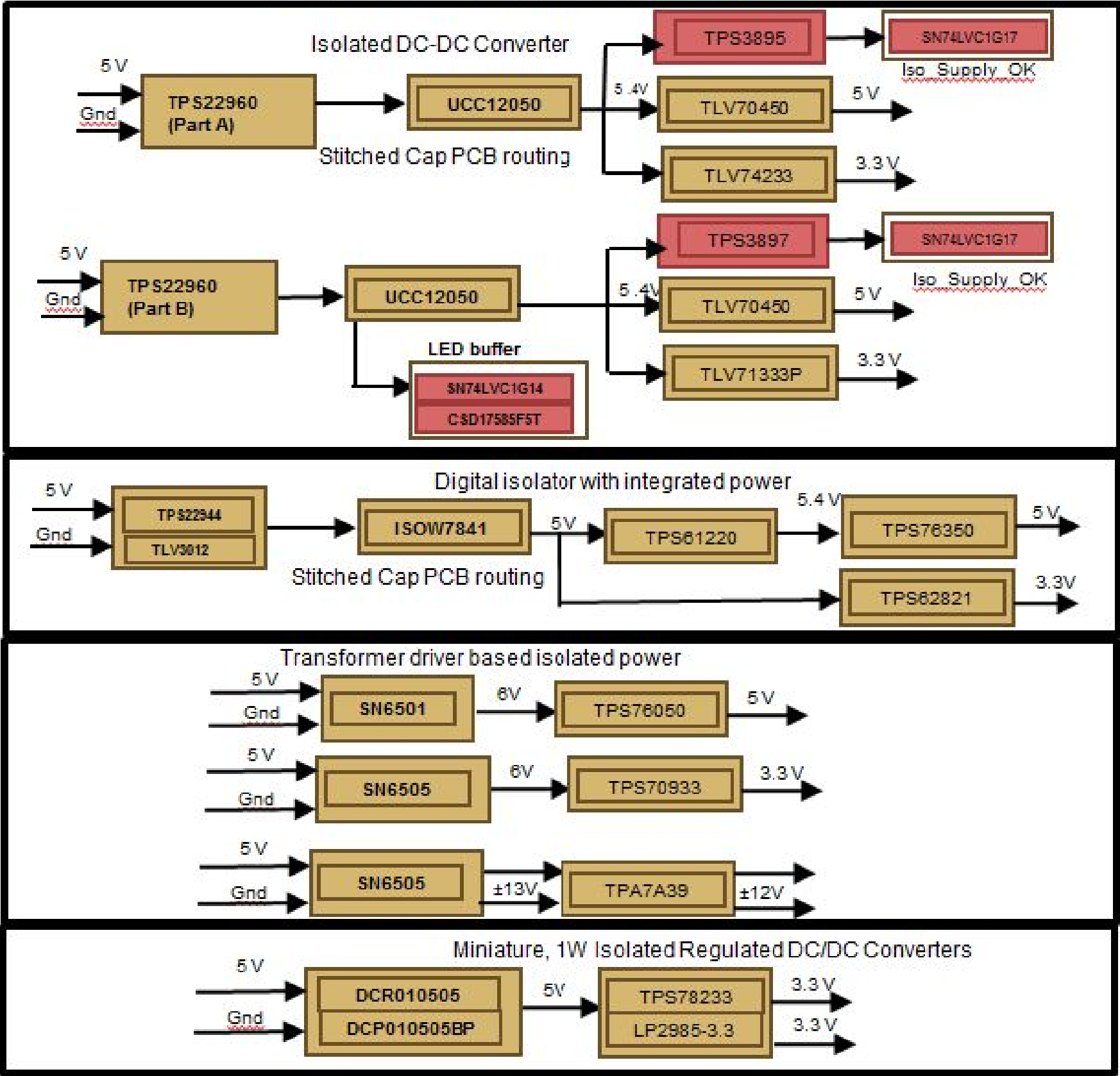
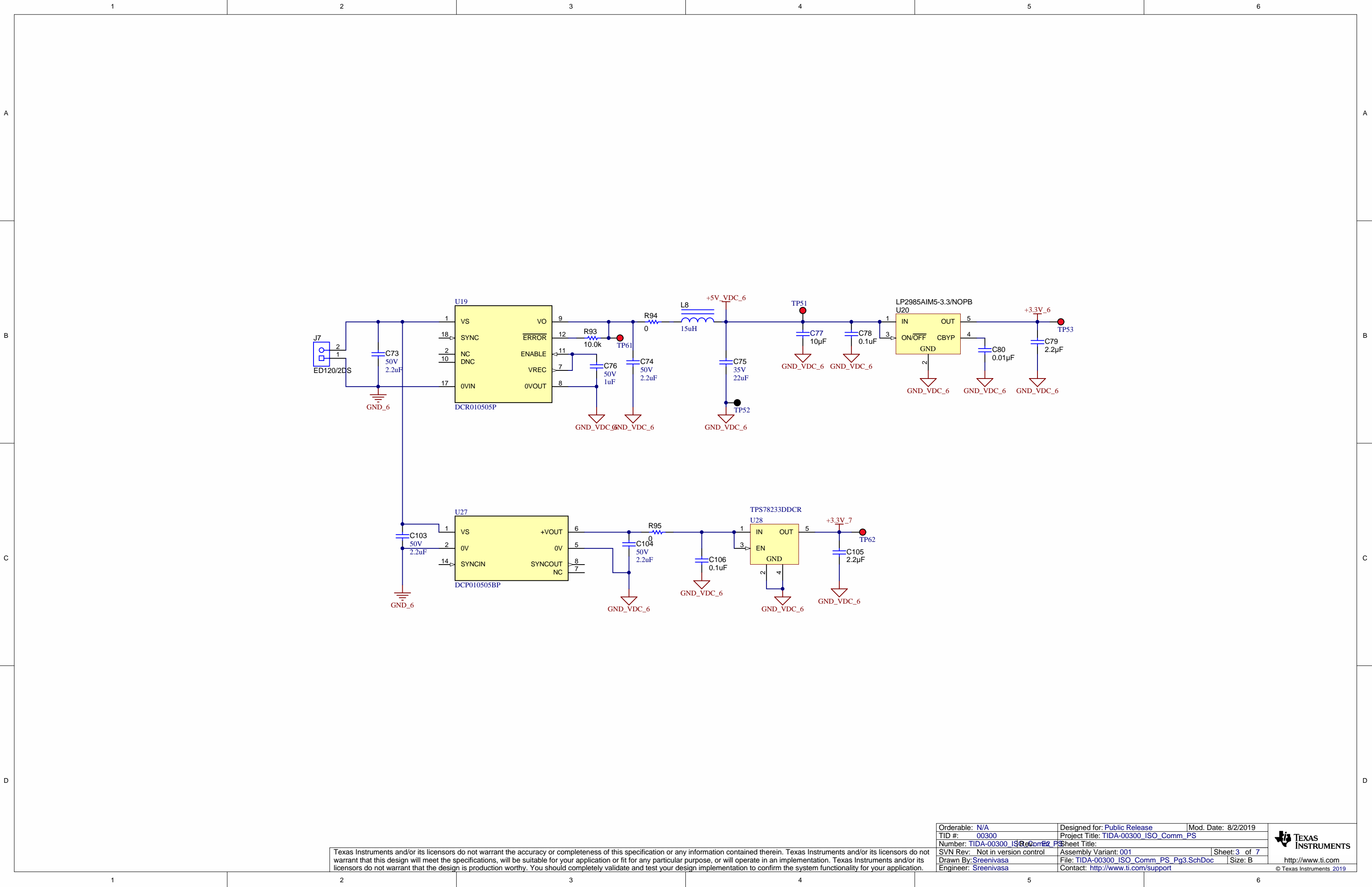


1		2		3		4		5		6	
										Revision History	
Rev	ECN #	Approved Date		Approved by		Notes					
N/A	N/A	N/A		N/A		N/A					

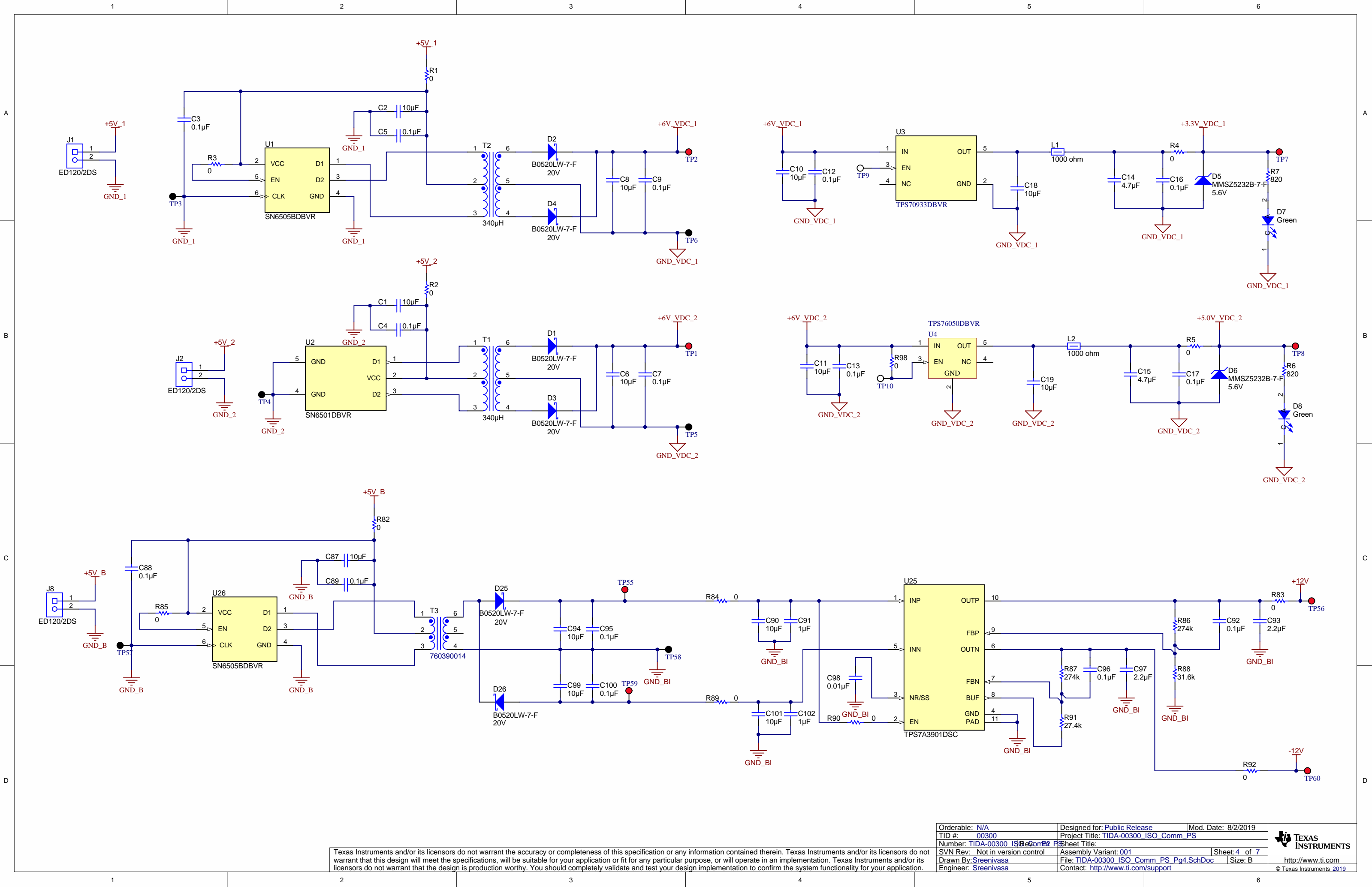
Isolated Power supply architectures

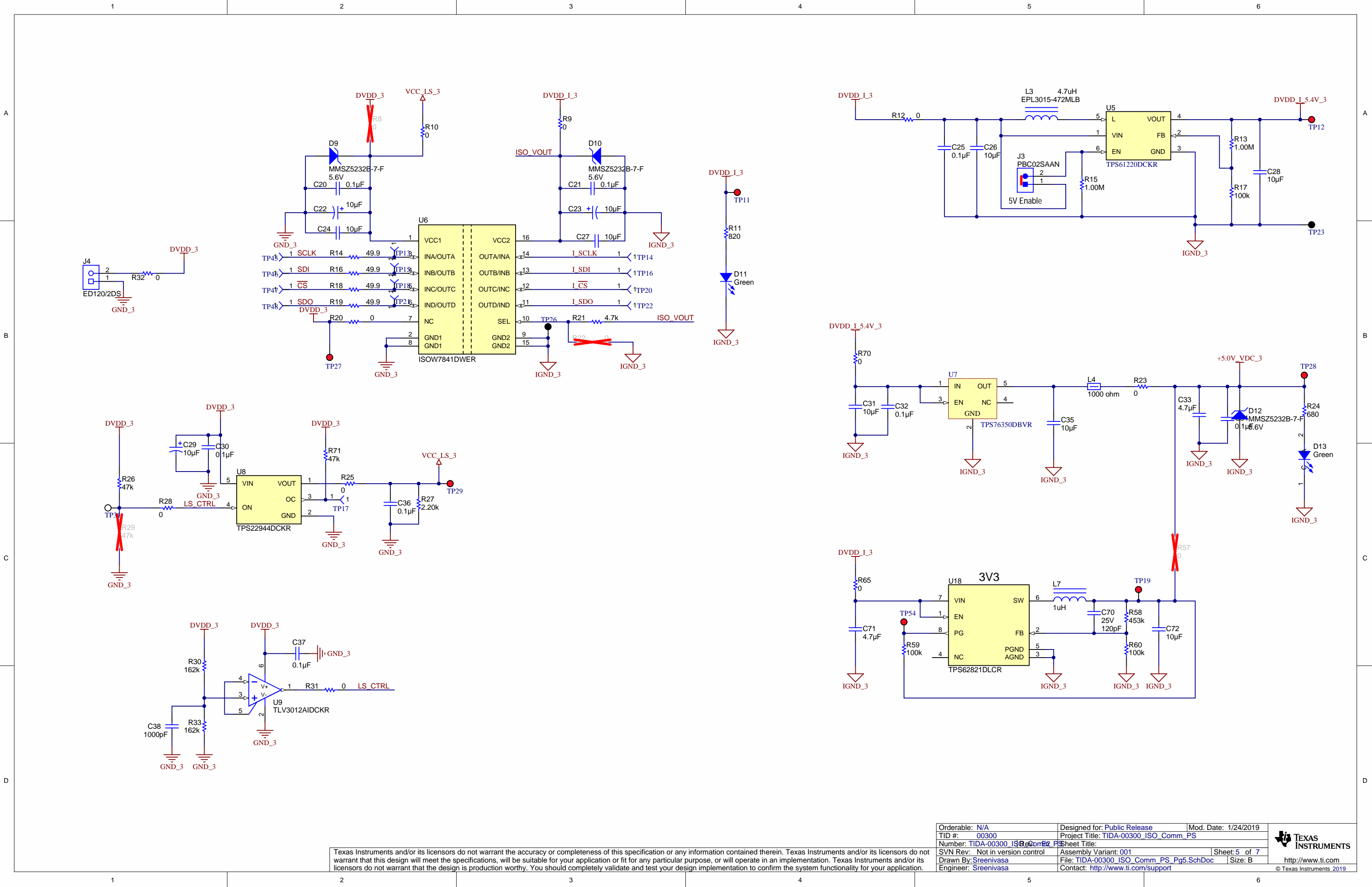




Texas Instruments and/or its licensors do not warrant the accuracy or completeness of this specification or any information contained therein. Texas Instruments and/or its licensors do not warrant that this design will meet the specifications, will be suitable for your application or fit for any particular purpose, or will operate in an implementation. Texas Instruments and/or its licensors do not warrant that the design is production worthy. You should completely validate and test your design implementation to confirm the system functionality for your application.

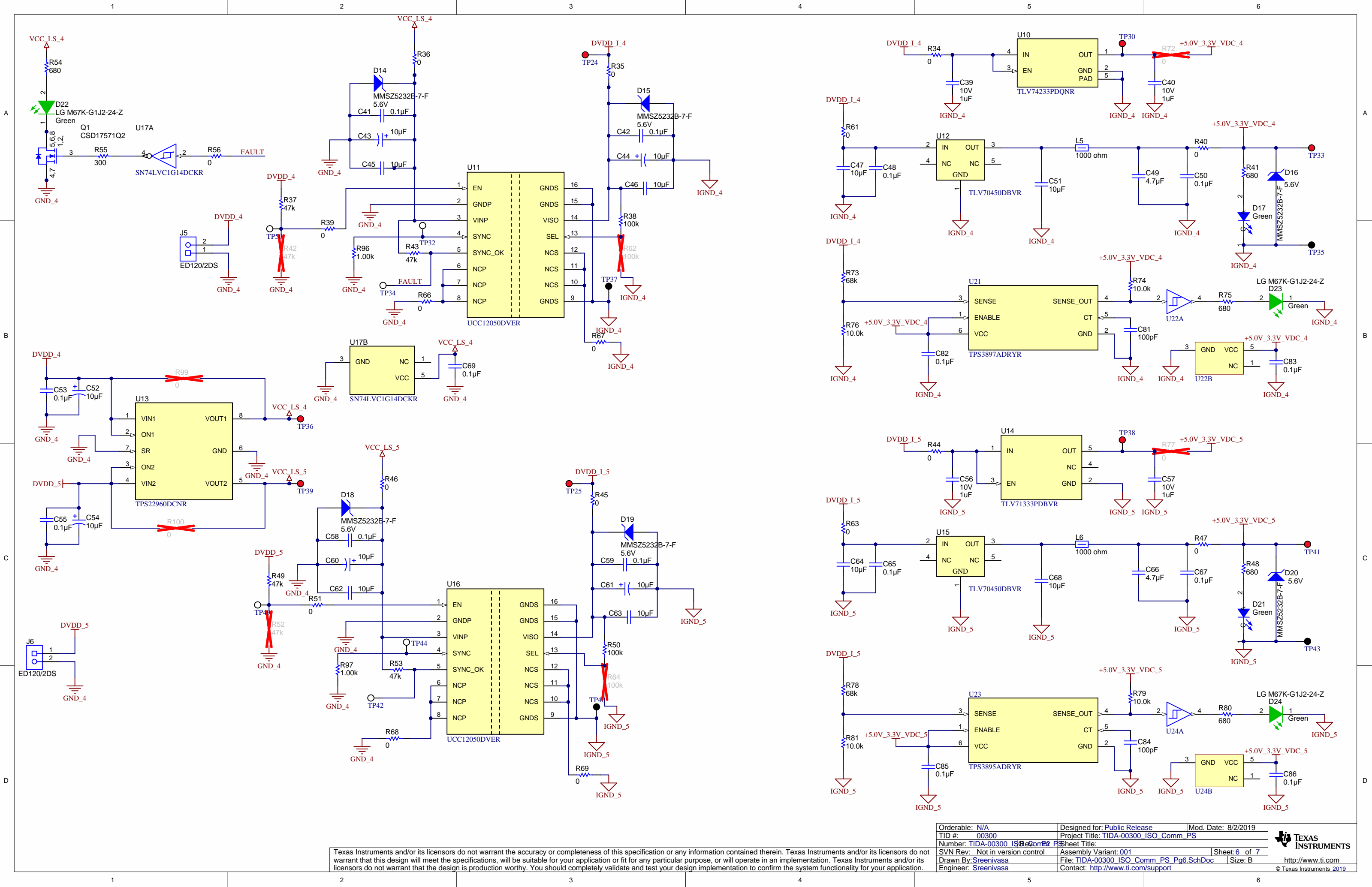
Orderable: N/A	Designed for: Public Release	Mod. Date: 8/2/2019
TID #: 00300	Project Title: TIDA-00300_ISO_Comm_PS	
Number: TIDA-00300_ISO_Comm_PS	Sheet Title:	
SVN Rev: Not in version control	Assembly Variant: 001	Sheet: 3 of 7
Drawn By: Sreenivasa	File: TIDA-00300_ISO_Comm_PS_Pg3.SchDoc	Size: B
Engineer: Sreenivasa	Contact: <a href="http://www.ti.com/support">http://www.ti.com/support</a>	





Texas Instruments and/or its licensors do not warrant the accuracy or completeness of this specification or any information contained therein. Texas Instruments and/or its licensors do not warrant that this design will meet the specifications, will be suitable for your application or fit for any particular purpose, or will operate in an implementation. Texas Instruments and/or its licensors do not warrant that the design is production worthy. You should completely validate and test your design implementation to confirm the system functionality for your application.

Orderable: N/A	Designed for: Public Release	Mod. Date: 1/24/2019
TID #: 00300	Project Title: TIDA-00300_ISO_Comm_PS	
Number: TIDA-00300_ISO_Comm_PS	Sheet Title:	
SVN Rev: Not in version control	Assembly Variant: 001	Sheet: 5 of 7
Drawn By: Sreenivasa	File: TIDA-00300_ISO_Comm_PS_Pg5.SchDoc	Size: B
Engineer: Sreenivasa	Contact: <a href="http://www.ti.com/support">http://www.ti.com/support</a>	



Texas Instruments and/or its licensors do not warrant the accuracy or completeness of this specification or any information contained therein. Texas Instruments and/or its licensors do not warrant that this design will meet the specifications, will be suitable for your application or fit for any particular purpose, or will operate in an implementation. Texas Instruments and/or its licensors do not warrant that the design is production worthy. You should completely validate and test your design implementation to confirm the system functionality for your application.

Orderable: N/A	Designed for: Public Release	Mod. Date: 8/2/2019
TID #: 00300	Project Title: TIDA-00300_ISO_Comm_PS	
Number: TIDA-00300_ISO_Comm_PS	Sheet Title:	
SVN Rev: Not in version control	Assembly Variant: 001	Sheet: 6 of 7
Drawn By: Sreenivasa	File: TIDA-00300_ISO_Comm_PS_Pg6.SchDoc	Size: B
Engineer: Sreenivasa	Contact: <a href="http://www.ti.com/support">http://www.ti.com/support</a>	

FID1

FID2

FID3

FID4

FID5

FID6

PCB Number: TIDA-00300\_ISO\_Comm\_PS

PCB Rev: E2

PCB

LOGO

PCB

LOGO

Logo4

PCB

LOGO

WEEE logo

PCB

LOGO

Logo5

Label Table	
Variant	Label Text

ZZ1

Label Assembly Note

This Assembly Note is for PCB labels only

ZZ2

Assembly Note

This Assembly Note will show in the PcbDoc and associated outputs

ZZ3

Assembly Note

This Assembly Note will show in the PcbDoc and associated outputs

ZZ4

Assembly Note

This Assembly Note will show in the PcbDoc and associated outputs