



TEXAS
INSTRUMENTS

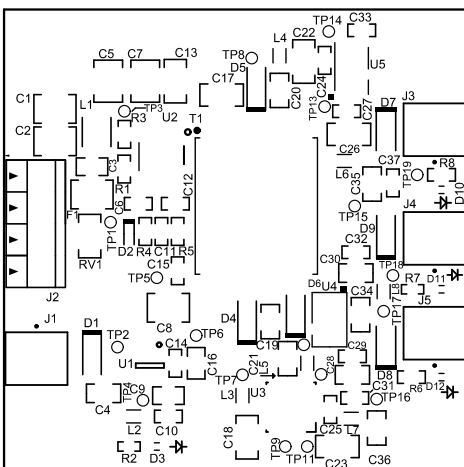
R9 R10

TIDA-00400 - [REDACTED] E1

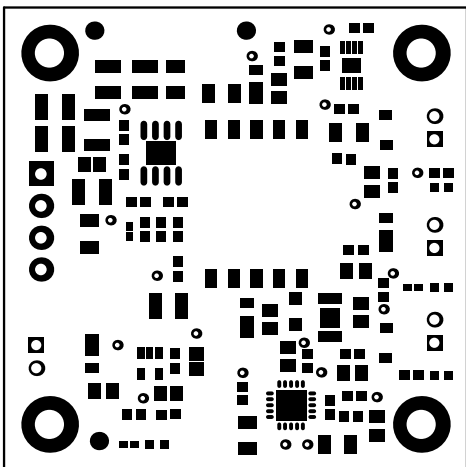
R11 R12

C38

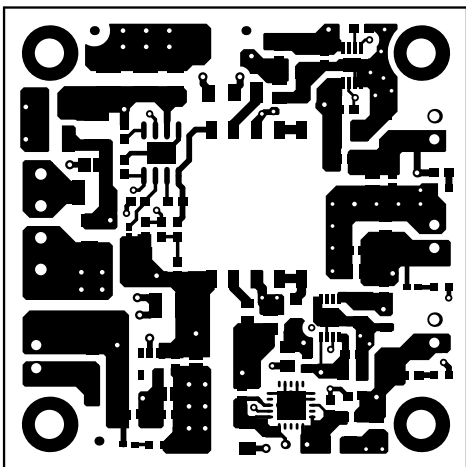
C39



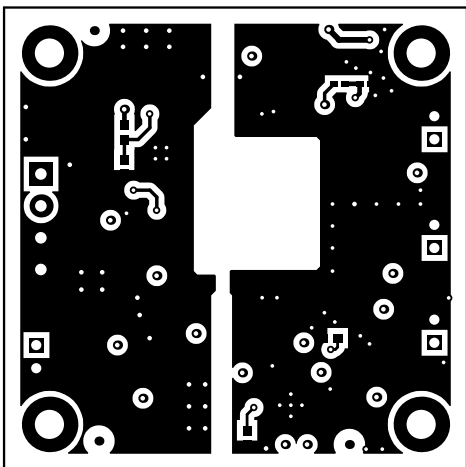
ALL ARTWORK VIEWED FROM TOP SIDE	BOARD #: TIDA-00400	REV: E1	SUN REV: Not In VersionControl
LAYER NAME = Top Overlay			
PLOT NAME = Top Overlay	GENERATED : 12/2/2014 7:53:46 PM	TEXAS INSTRUMENTS	



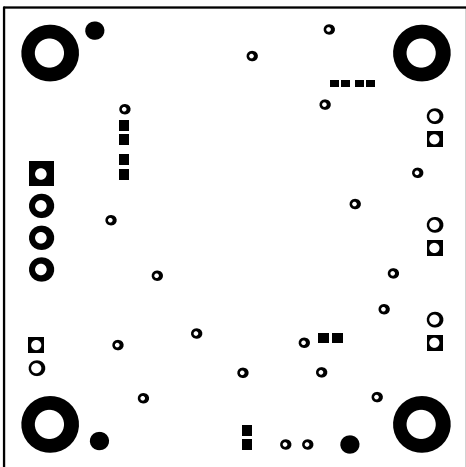
ALL ARTWORK VIEWED FROM TOP SIDE	BOARD #: TIDA-00400	REV: E1	SUN REV: Not In VersionControl
LAYER NAME = Top Solder			
PLOT NAME = Top Solder Mask	GENERATED : 12/2/2014 7:53:47 PM	TEXAS INSTRUMENTS	



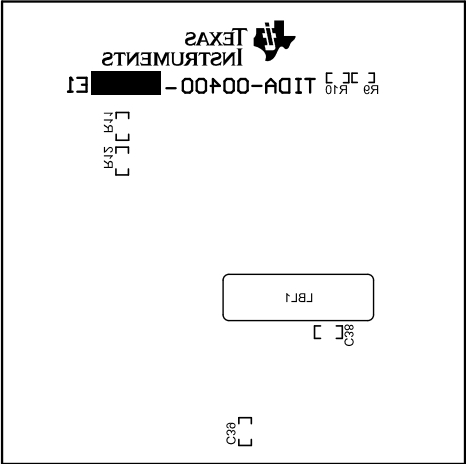
ALL ARTWORK VIEWED FROM TOP SIDE	BOARD #: TIDA-00400	REV: E1	SUN REV: Not In VersionControl
LAYER NAME = Top Layer			
PLOT NAME = Top Layer	GENERATED : 12/2/2014 7:53:47 PM	TEXAS INSTRUMENTS	



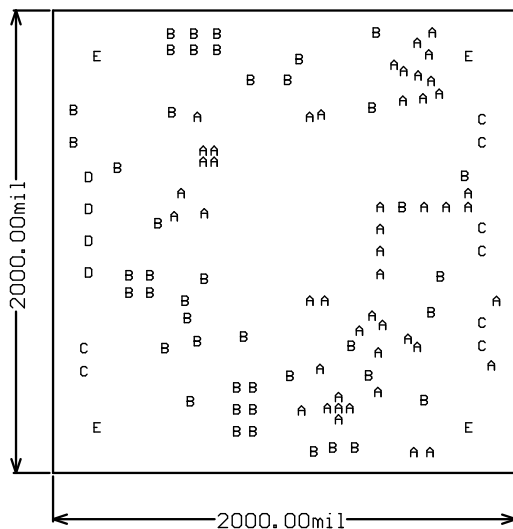
ALL ARTWORK VIEWED FROM TOP SIDE	BOARD #: TIDA-00400	REV: E1	SUN REV: Not In VersionControl
LAYER NAME = Bottom Layer			
PLOT NAME = Bottom Layer	GENERATED : 12/2/2014 7:53:48 PM	TEXAS INSTRUMENTS	



ALL ARTWORK VIEWED FROM TOP SIDE	BOARD #: TIDA-00400	REV: E1	SUN REV: Not In VersionControl
LAYER NAME = Bottom Solder			
PLOT NAME = Bottom Solder Mask	GENERATED : 12/2/2014 7:53:48 PM	TEXAS INSTRUMENTS	



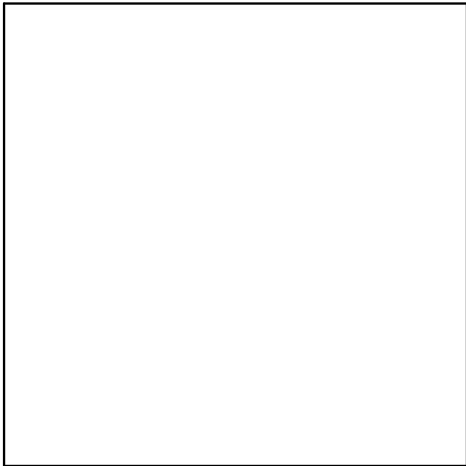
ALL ARTWORK VIEWED FROM TOP SIDE	BOARD #: TIDA-00400	REV: E1	SUN REV: Not In VersionControl
LAYER NAME = Bottom Overlay			
PLOT NAME = Bottom Overlay	GENERATED : 12/2/2014 7:53:48 PM	TEXAS INSTRUMENTS	



Symbol	Hit Count	Tool Size	Plated	Hole Type
A	48	16mil (0.406mm)	PTH	Round
B	44	20mil (0.508mm)	PTH	Round
C	8	43.307mil (1.1mm)	PTH	Round
D	4	50mil (1.27mm)	PTH	Round
E	4	125.984mil (3.2mm)	PTH	Round
108 Total				

Drill Table
 FOR 16MIL DRILL +0/-16MIL
 FOR PTH DRILL +/-3MIL
 FOR NPTH DRILL +/-2MIL

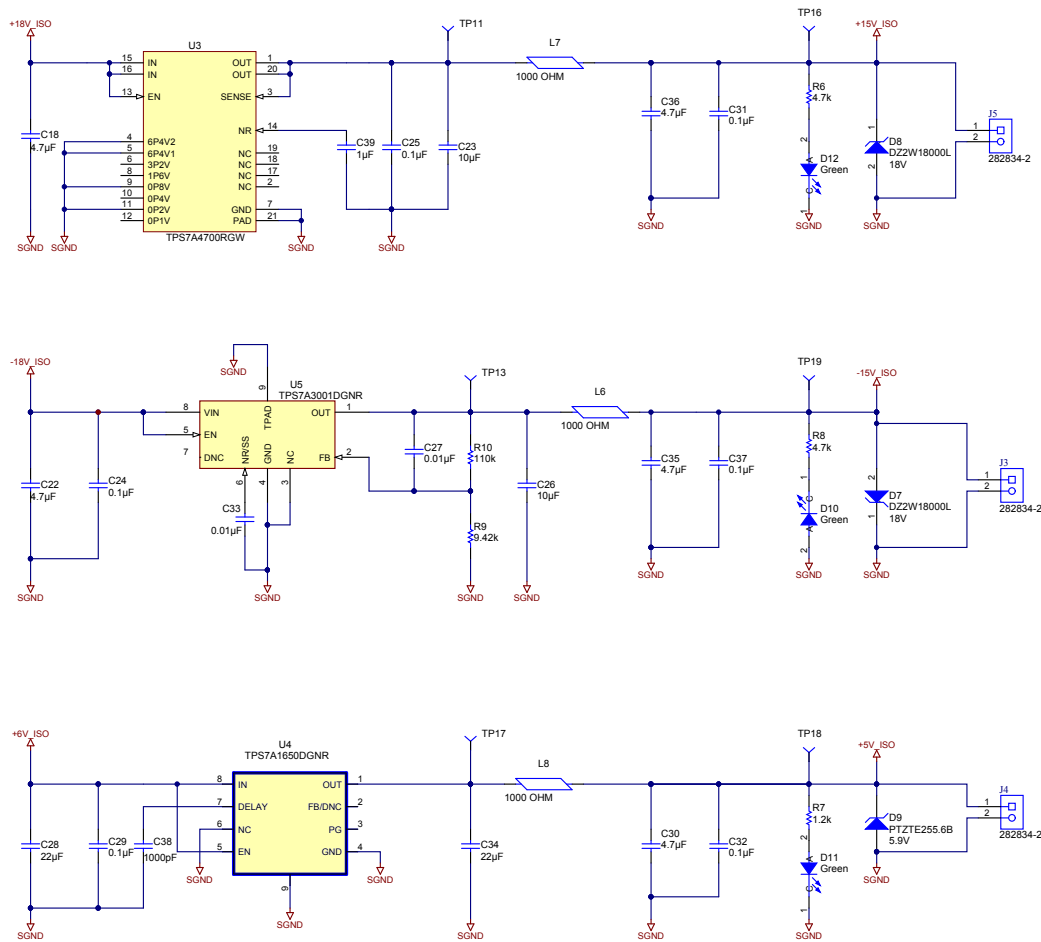
ALL ARTWORK VIEWED FROM TOP SIDE	BOARD #: TIDA-00400	REV: E1	SUN REV: Not In VersionControl
LAYER NAME = Drill Drawing			
PLOT NAME = Drill Drawing	GENERATED : 12/2/2014 7:53:49 PM	TEXAS INSTRUMENTS	




1000 (mil)

ALL ARTWORK VIEWED FROM TOP SIDE	BOARD #: TIDA-00400	REV: E1	SUN REV: Not In VersionControl
LAYER NAME = M2 Board Dimensions			
PLOT NAME = Board Dimensions	GENERATED : 12/2/2014 7:53:49 PM		TEXAS INSTRUMENTS

LDO



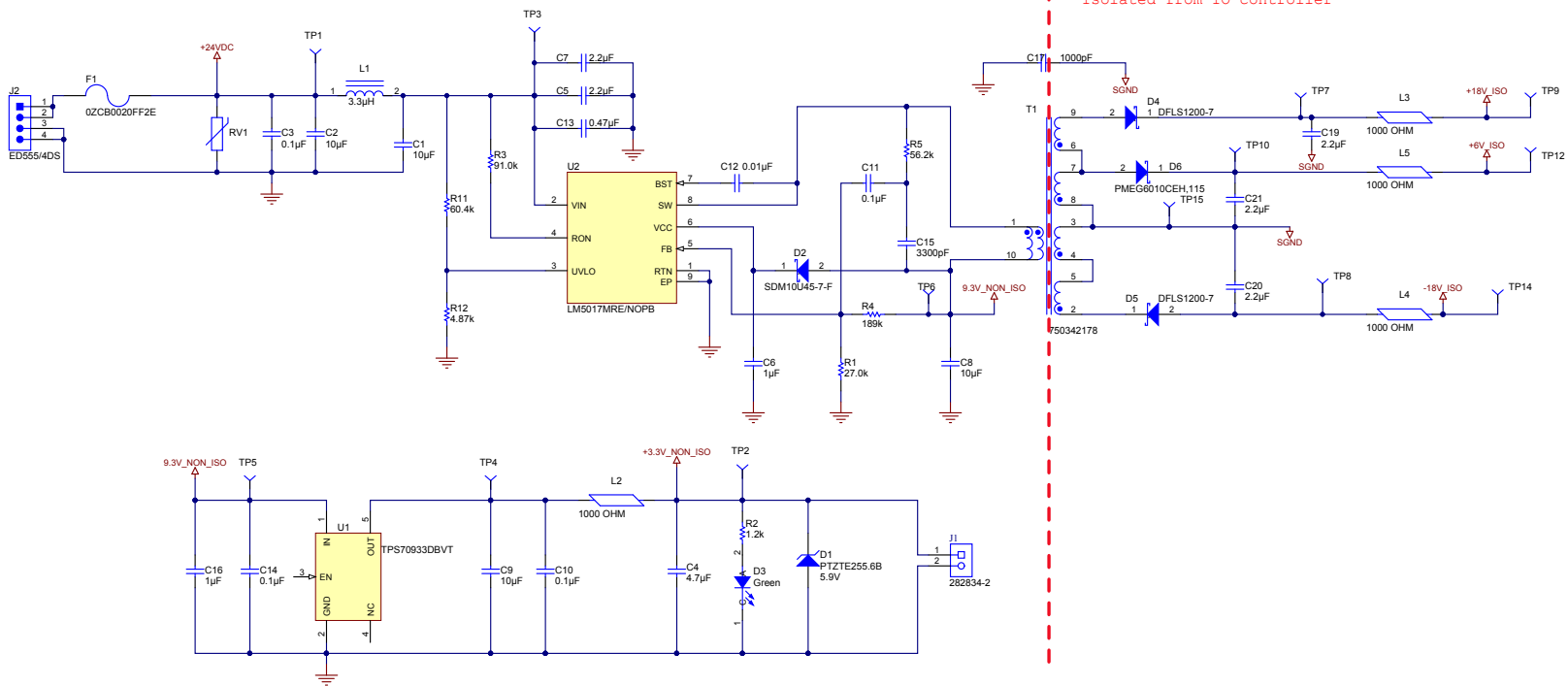
Texas Instruments and/or its licensors do not warrant the accuracy or completeness of this specification or any information contained therein. Texas Instruments and/or its licensors do not warrant that this design will meet the specifications, will be suitable for your application or fit for any particular purpose, or will operate in an implementation. Texas Instruments and/or its licensors do not warrant that the design is production worthy. You should completely validate and test your design implementation to confirm the system functionality for your application.

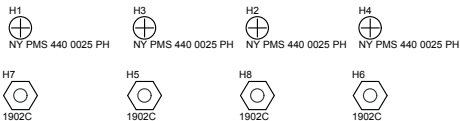
Designed for: Public Release	Mod. Date: 12/2/2014	
Project Title: 1W Isolated Power Supply for PLC IO Modules	Rev: E1	
Sheet Title:	Assembly Variant: [No Variations]	
Drawn By:	File: Post Regulated LDO SchDoc	
Engineer: Amol Gadkari	Contact: http://www.ti.com/support	

Sheet 1 of 1
Size: B
© Texas Instruments 2015

Isolated power supply and Signal Isolation

Isolated from IO controller





PCB Number: TIDA-00400
PCB Rev: E1

PCB
LOGO
Texas Instruments

You should delete the nylon screws/standoffs and/or the bumpers as needed for your design (or substitute other parts from Hardware.IntLib). Bumpers are cheaper, but provide less clearance.

Deleting anything else from this page may result in your EVM submission being rejected (until you add them back).

Update the Label Text in the Label Table as needed for each Assembly Variant.

You can delete this note too.

Label Table

Variant	Label Text
001	ChangeMe!
002	ChangeMe!

LBL1
PCB Label
Size: 0.65" x 0.20"

ZZ1
Label Assembly Note
This Assembly Note is for PCB labels only


ZZ2
Assembly Note
These assemblies are ESD sensitive, ESD precautions shall be observed.

ZZ3
Assembly Note
These assemblies must be clean and free from flux and all contaminants. Use of no clean flux is not acceptable.

ZZ4
Assembly Note
These assemblies must comply with workmanship standards IPC-A-610 Class 2, unless otherwise specified.

Texas Instruments and/or its licensors do not warrant the accuracy or completeness of this specification or any information contained therein. Texas Instruments and/or its licensors do not warrant that this design will meet the specifications, will be suitable for your application or fit for any particular purpose, or will operate in an implementation. Texas Instruments and/or its licensors do not warrant that the design is production worthy. You should completely validate and test your design implementation to confirm the system functionality for your application.

Number: TIDA-00400	Rev: E1	Designed for: Public Release	Mod. Date: 12/2/2014
SVN Rev.: Not in version control	Assembly Variant: [No Variations]	Project Title: 1W Isolated Power Supply for PLC IO Modules	
Drawn By:	File: Hardware_ANSI-B_SchDoc	Sheet Title:	Sheet 1 of 1
Engineer: Amol Gadkari	Contact: http://www.ti.com/support		Size: B

 **TEXAS
INSTRUMENTS**
<http://www.ti.com>
© Texas Instruments 2015

Revision History	
Revision	Notes

Place Block Diagram here (if appropriate) or delete this text box.
If using a block diagram from another tool, save the picture as a .bmp
file.
Then, use menu Place|Drawing Tools|Graphic to insert the .bmp file
on the schematic.