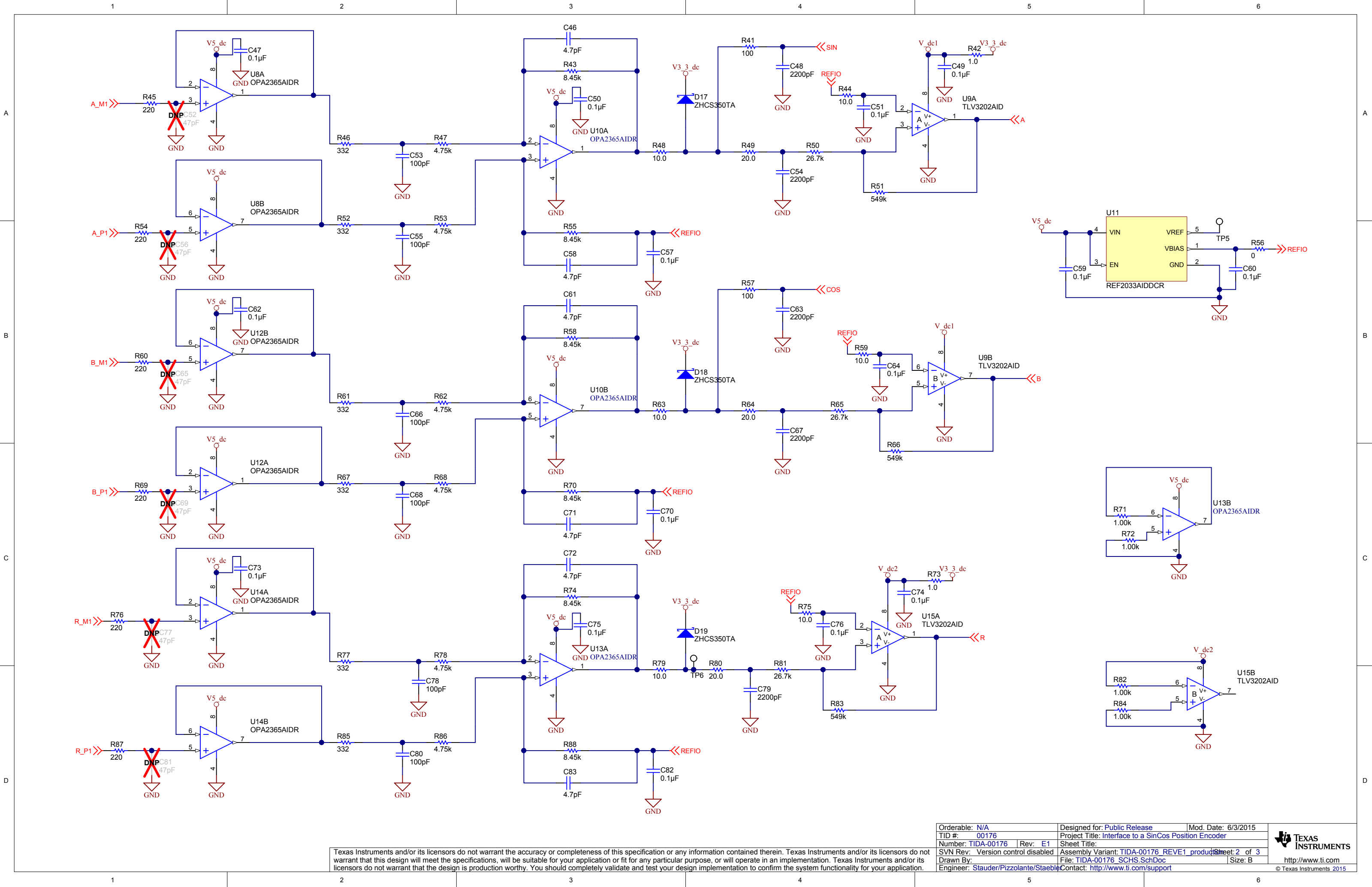


NOTE

The differential inputs A+,A- are swapped and connected to ADS8354 AINM_B and AINP_B
The differential inputs B+,B- are swapped and connected to ADS8354 AINM_A and AINP_A
Since both signals are sampled simultaneously there's no impact.
Adjust in software by invertirng and swapping the results.

This was done to optimize layout for best performance minimizing vias and signal crossings.



Texas Instruments and/or its licensors do not warrant the accuracy or completeness of this specification or any information contained therein. Texas Instruments and/or its licensors do not warrant that this design will meet the specifications, will be suitable for your application or fit for any particular purpose, or will operate in an implementation. Texas Instruments and/or its licensors do not warrant that the design is production worthy. You should completely validate and test your design implementation to confirm the system functionality for your application.

Orderable: N/A	Designed for: Public Release	Mod. Date: 6/3/2015
TID #: 00176	Project Title: Interface to a SinCos Position Encoder	
Number: TIDA-00176	Rev: E1	Sheet Title:
SVN Rev: Version control disabled	Assembly Variant: TIDA-00176_REVE1_products	Sheet 2 of 3
Drawn By:	File: TIDA-00176_SCHS.SchDoc	Size: B
Engineer: Stauder/Pizzolante/Staebli	Contact: http://www.ti.com/support	

A

A

B

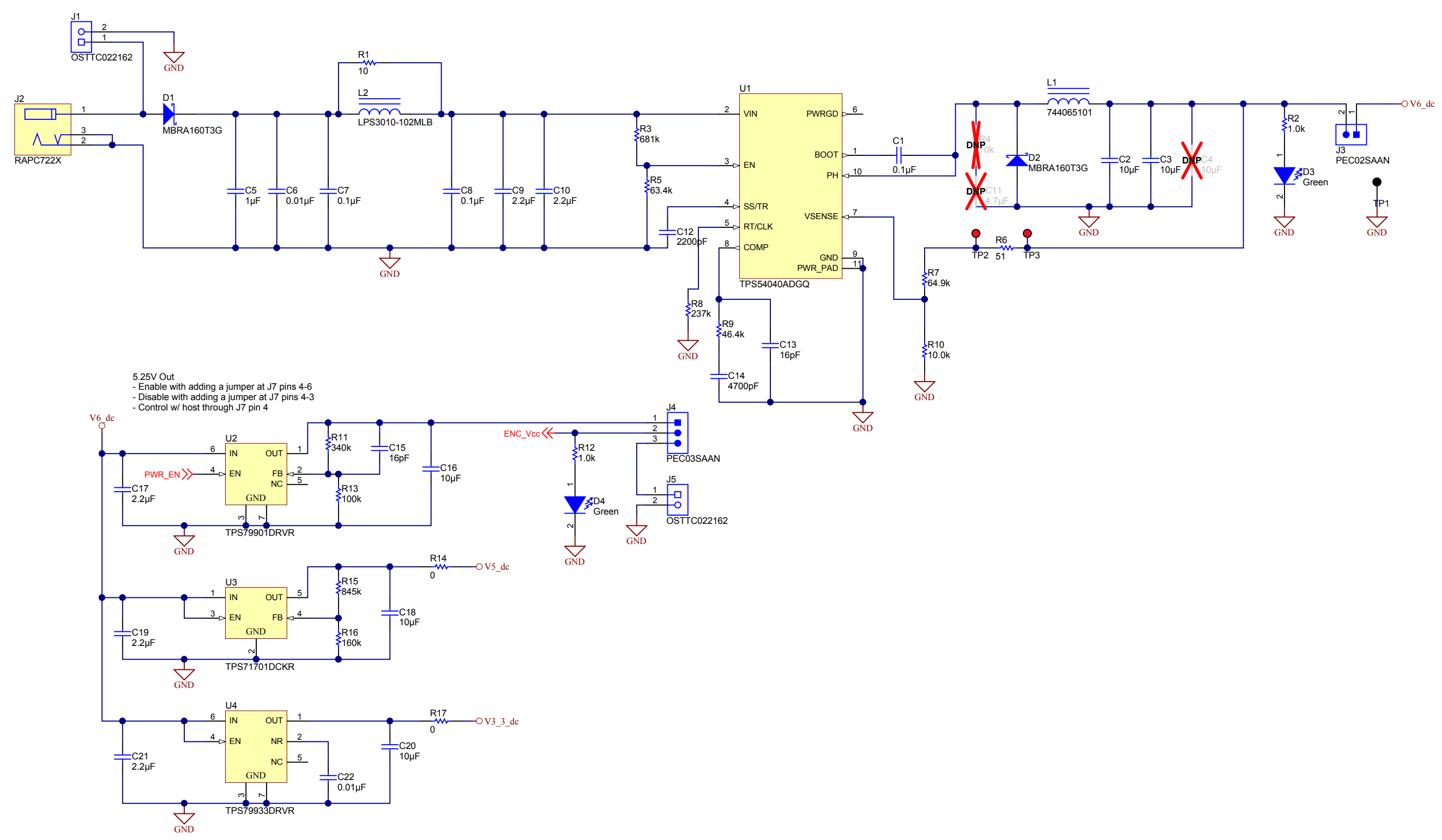
B

C

C

D

D



5.25V Out
- Enable with adding a jumper at J7 pins 4-6
- Disable with adding a jumper at J7 pins 4-3
- Control w/ host through J7 pin 4

