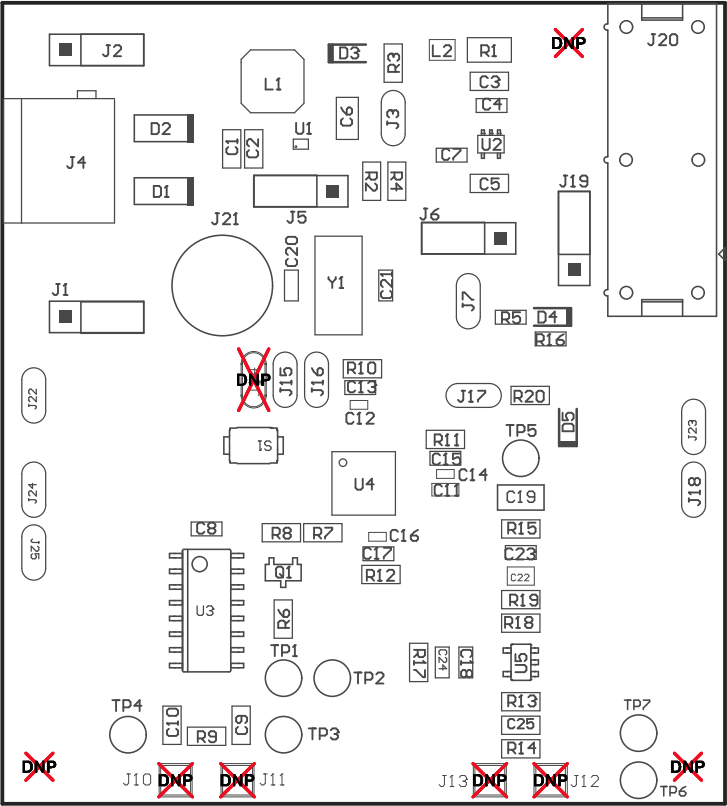


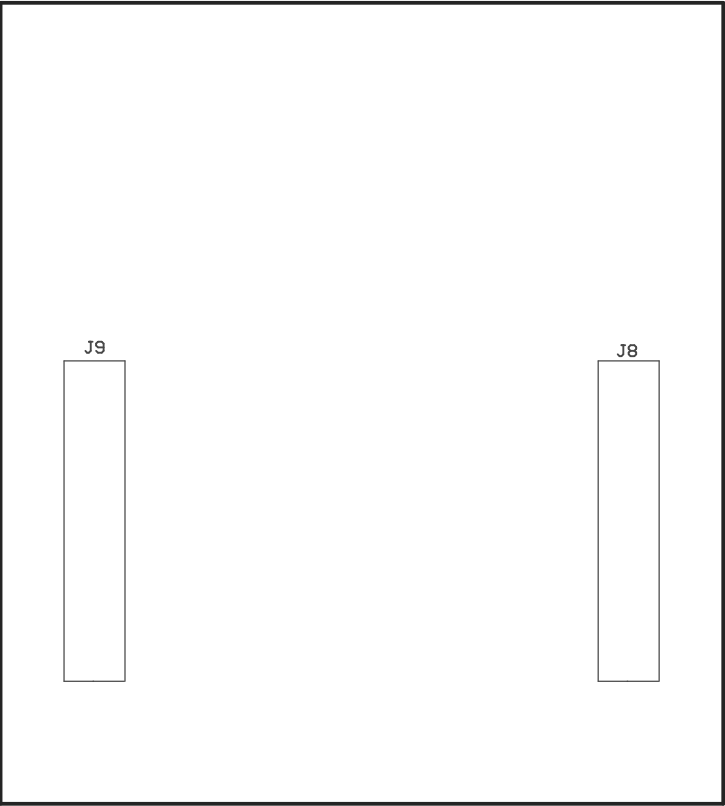
- Z21 ■ Install label in silkscreened box after final wash. Text shall be 8 pt font. Text shall be per the Label Table in the PDF schematic.
- Z22 ■ These assemblies are ESD sensitive, ESD precautions shall be observed.
- Z23 ■ These assemblies must be clean and free from flux and all contaminants. Use of no clean flux is not acceptable.
- Z24 ■ These assemblies must comply with workmanship standards IPC-A-610 Class 2, unless otherwise specified.



COMPONENTS MARKED 'DNP' SHOULD NOT BE POPULATED.

ASSEMBLY VARIANT: 001

PCB VIEWED FROM TOP SIDE	BOARD #:	TIDA-00462	REV:	E1	SUN REV:	Not In VersionControl
LAYER NAME =	M5 Assembly Top					
PLOT NAME=	Top Assembly Drawing		GENERATED :	9/29/2015	3:55:27 PM	TEXAS INSTRUMENTS



COMPONENTS MARKED 'DNP' SHOULD NOT BE POPULATED.
ASSEMBLY VARIANT: 001

PCB VIEWED FROM BOTTOM SIDE	BOARD #: TIDA-00462	REV: E1	SUN REV: Not In VersionControl
	LAYER NAME = M6 Assembly Bottom		
PLOT NAME =Bottom Assembly Drawing	GENERATED	: 9/29/2015 3:55:28 PM	TEXAS INSTRUMENTS