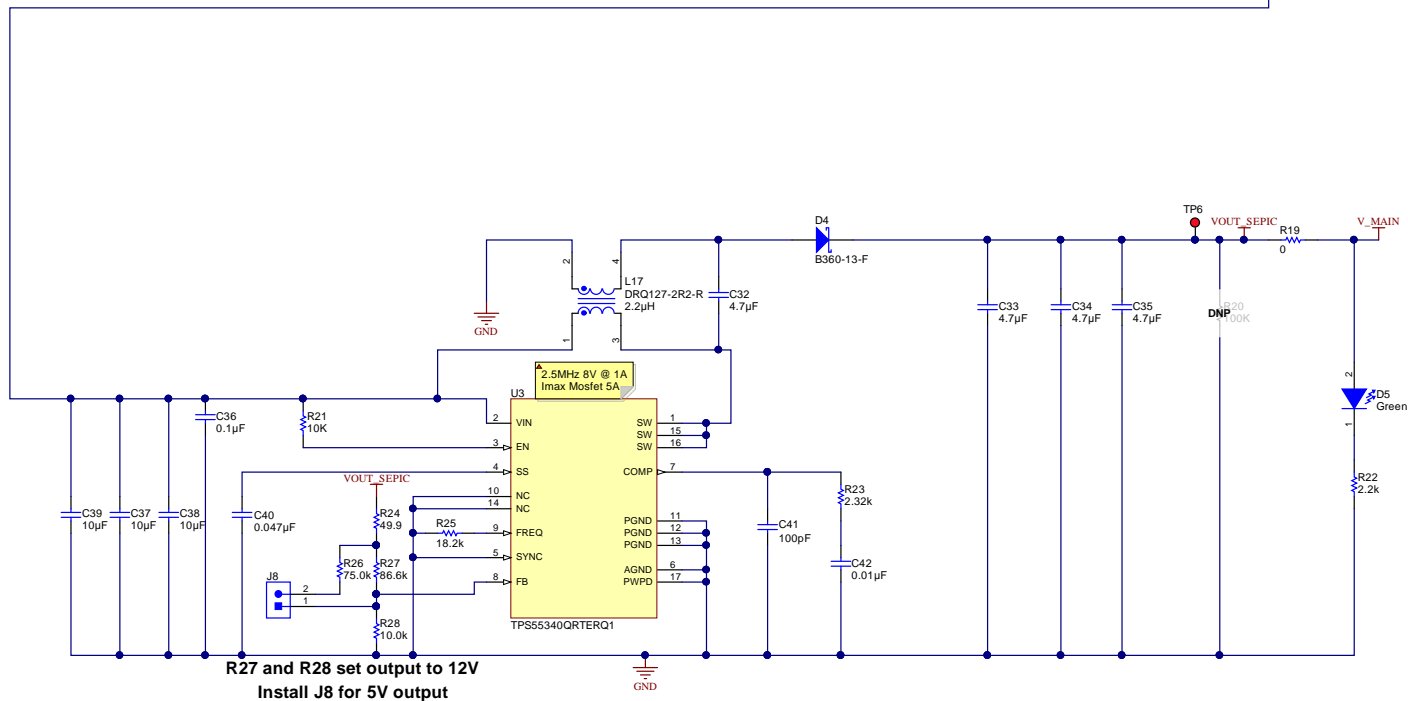
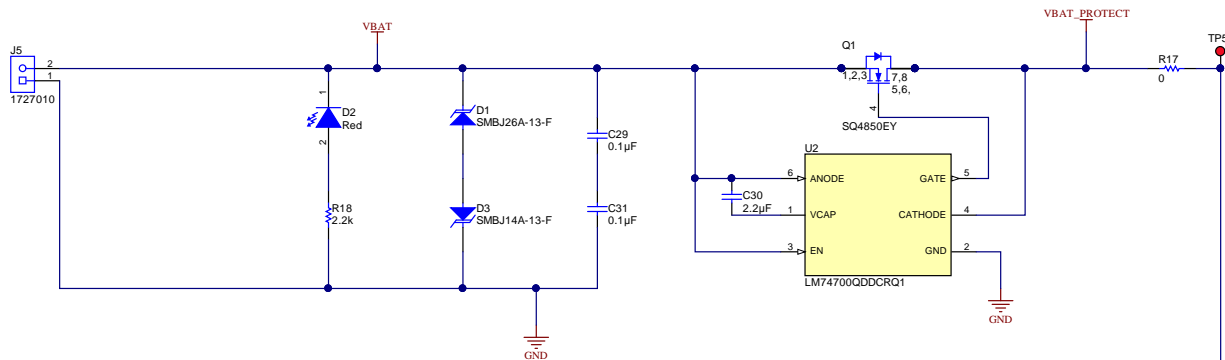


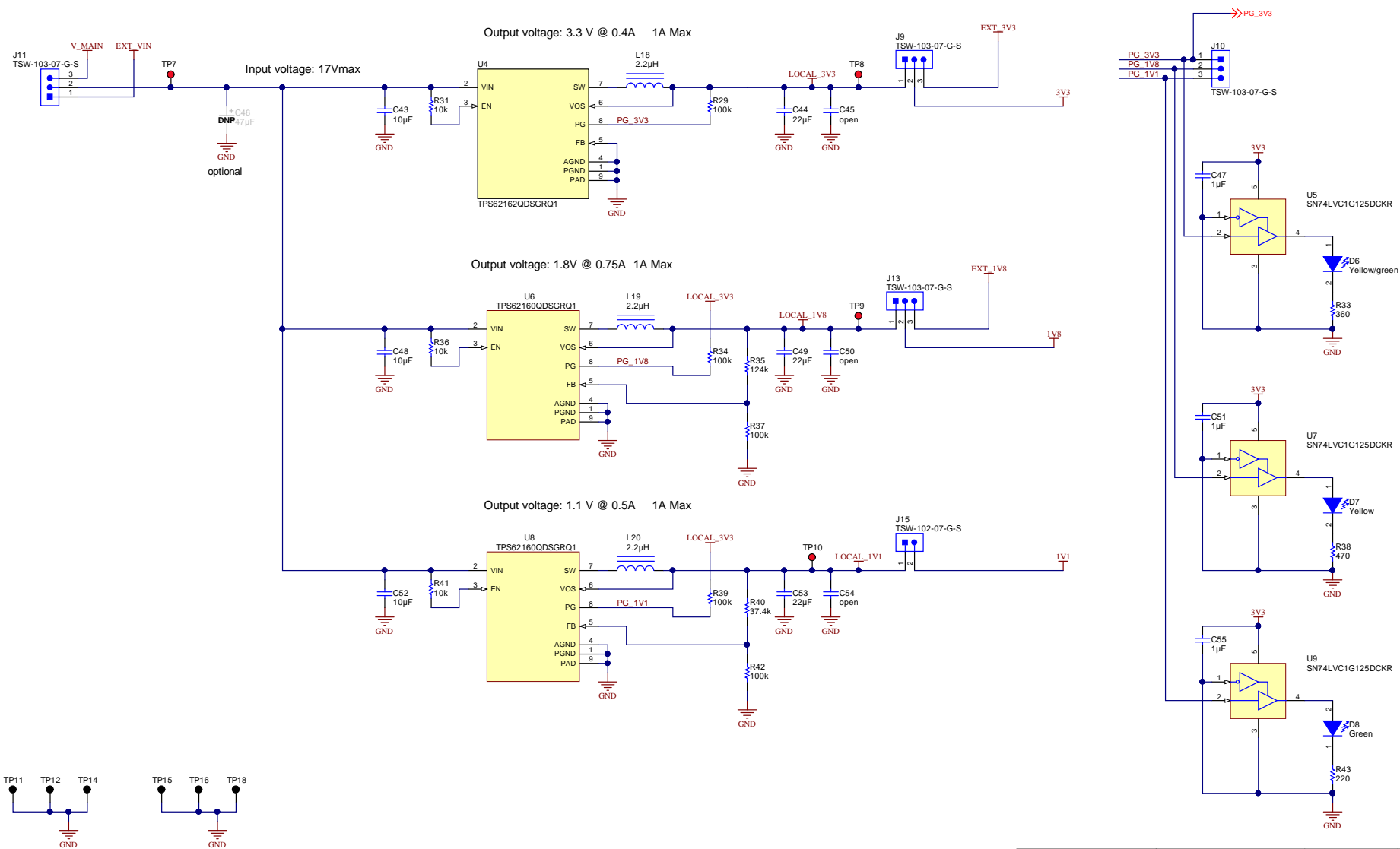
Car Battery Input
Vin = 4V - 40V

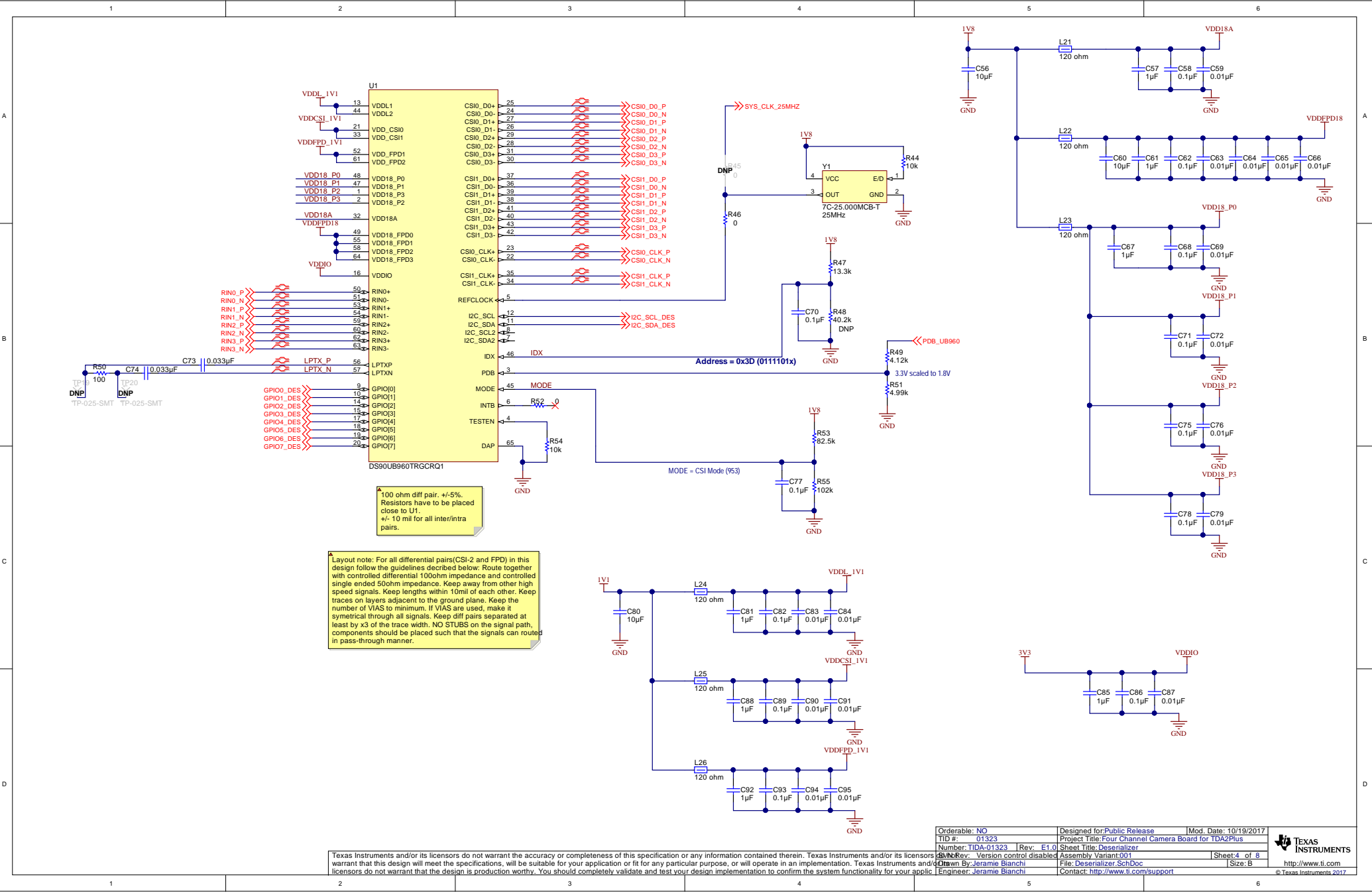


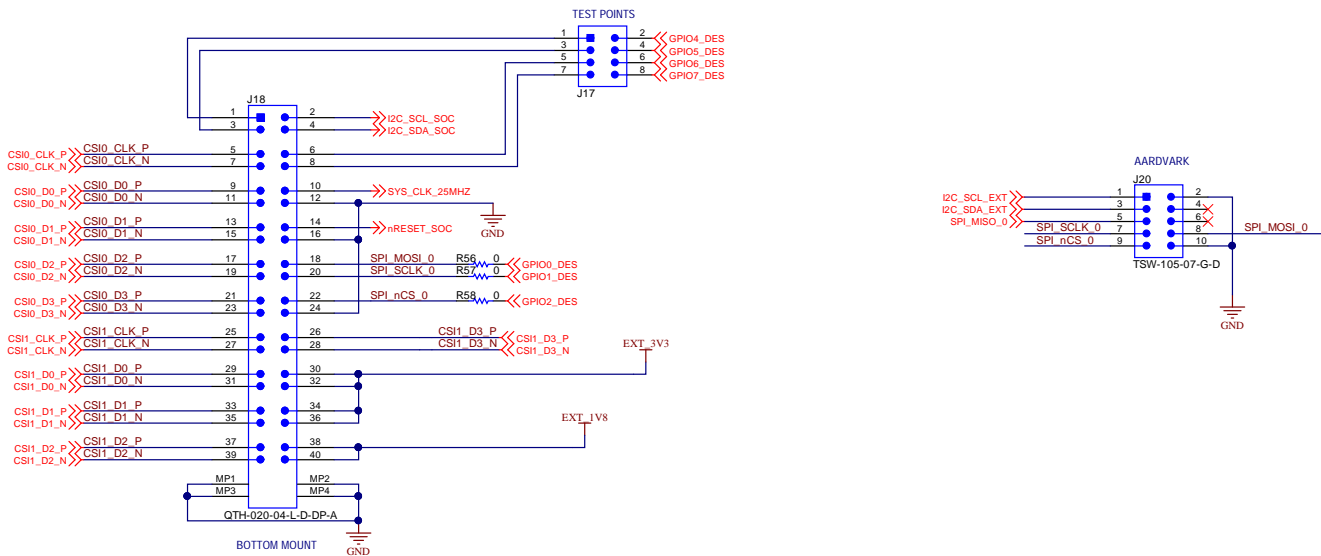
R27 and R28 set output to 12V
Install J8 for 5V output

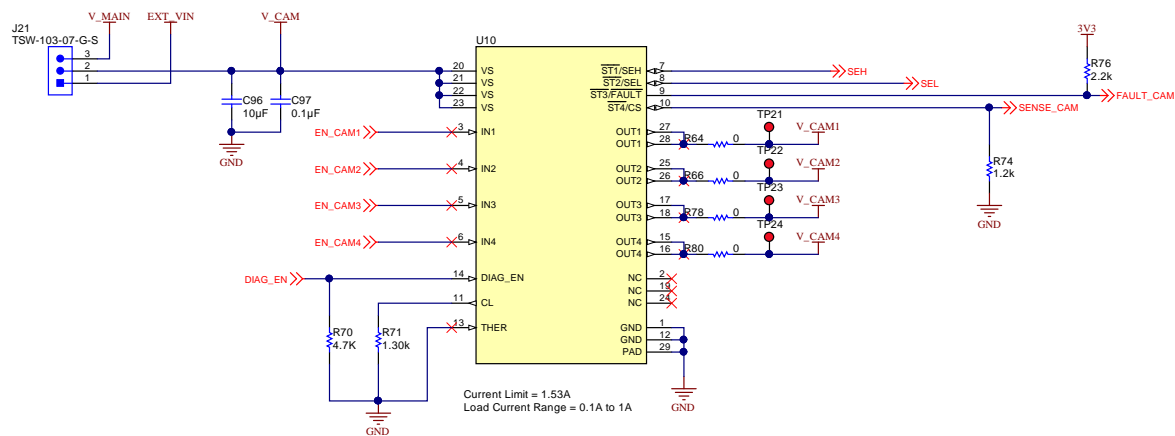
Orderable: NO	Designed for: Public Release	Mod. Date: 10/20/2017
TID #: 01323	Project Title: Four Channel Camera Board for TDA2Plus	
Number: TIDA-01323	Rev: E1.0	Sheet Title: V_Batt_Supply
Rev: Version control disabled	Assembly Variant: 001	Sheet: 2 of 8
Drawn By: Jeremie Bianchi	File: V_Batt_Supply_SchDoc	Size: B
Engineer: Jeremie Bianchi	Contact: http://www.ti.com/support	

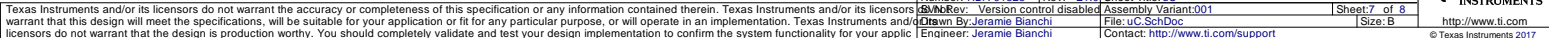
Texas Instruments and/or its licensors do not warrant the accuracy or completeness of this specification or any information contained therein. Texas Instruments and/or its licensors warrant that this design will meet the specifications, will be suitable for your application or fit for any particular purpose, or will operate in an implementation. Texas Instruments and/or its licensors do not warrant that the design is production worthy. You should completely validate and test your design implementation to confirm the system functionality for your application.

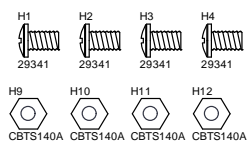












DNP FID1 DNP FID2 DNP FID3 DNP FID4 DNP FID5 DNP FID6

PCB Number: TIDA-01323
PCB Rev: E1.0

PCB
LOGO
Pb-Free Symbol

ZZ2

Assembly Note

Assembly Note
These assemblies are ESD sensitive, ESD precautions shall be observed.

ZZ3

Assembly Note

Assembly Note
These assemblies must be clean and free from flux and all contaminants. Use of no clean flux is not acceptable.

ZZ4

Assembly Note

These assemblies must comply with workmanship standards IPC-A-610 Class 2, unless otherwise specified.

Orderable: NO	Designed for: Public Release	Mod. Date: 10/19/2017
TID # 01323	Project Title: Four Channel Camera Board for TDA2Plus	
Number: TIDA-01323	Rev: E1.0	
Sheet Title: Hardware	Assembly Variant: 001	Sheet: 8 of 8
Drawn by: Jeramie Bianchi	Contact: Hardware_SchDoc	Size: B
Engineer: Jeramie Bianchi	File: http://www.ti.com/support	



**TEXAS
INSTRUMENTS**

<http://www.ti.com>

© Texas Instruments 2017

Texas Instruments and/or its licensors do not warrant the accuracy or completeness of this specification or any information contained therein. Texas Instruments and/or its licensors warrant that this design will meet the specifications, will be suitable for your application or fit for any particular purpose, or will operate in an implementation. Texas Instruments and/or its licensors do not warrant that the design is production worthy. You should completely validate and test your design implementation to confirm the system functionality for your application.

Number: [TIDA-01323](#) Rev: [E1.0](#) Sheet: [1 of 8](#) **Hardware**
 Status: Rev: Version control disabled Assembly Number: [001](#) Sheet: [8 of 8](#)
 Drawn By: [Jeramie Bianchi](#) File: [Hardware_SchDoc](#) Size: B
 Engineer: [Jeramie Bianchi](#) [http://www.ti.com/support](#)
 © Texas Instruments 2017