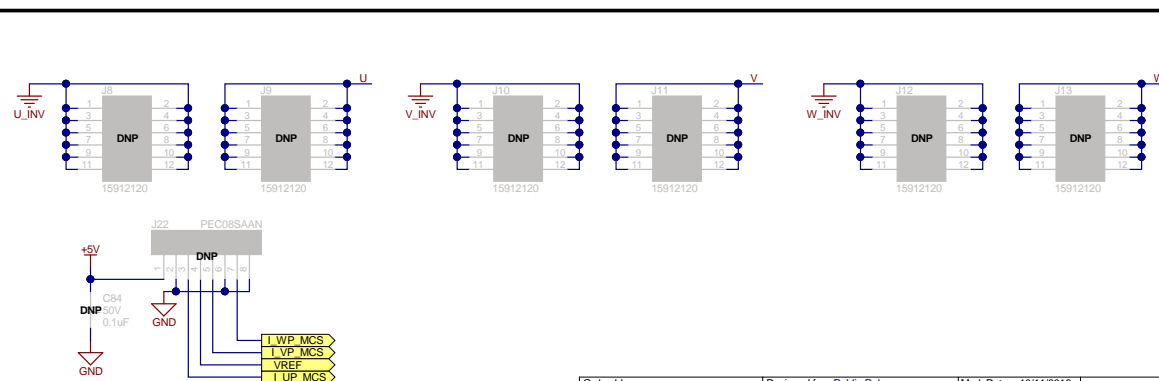
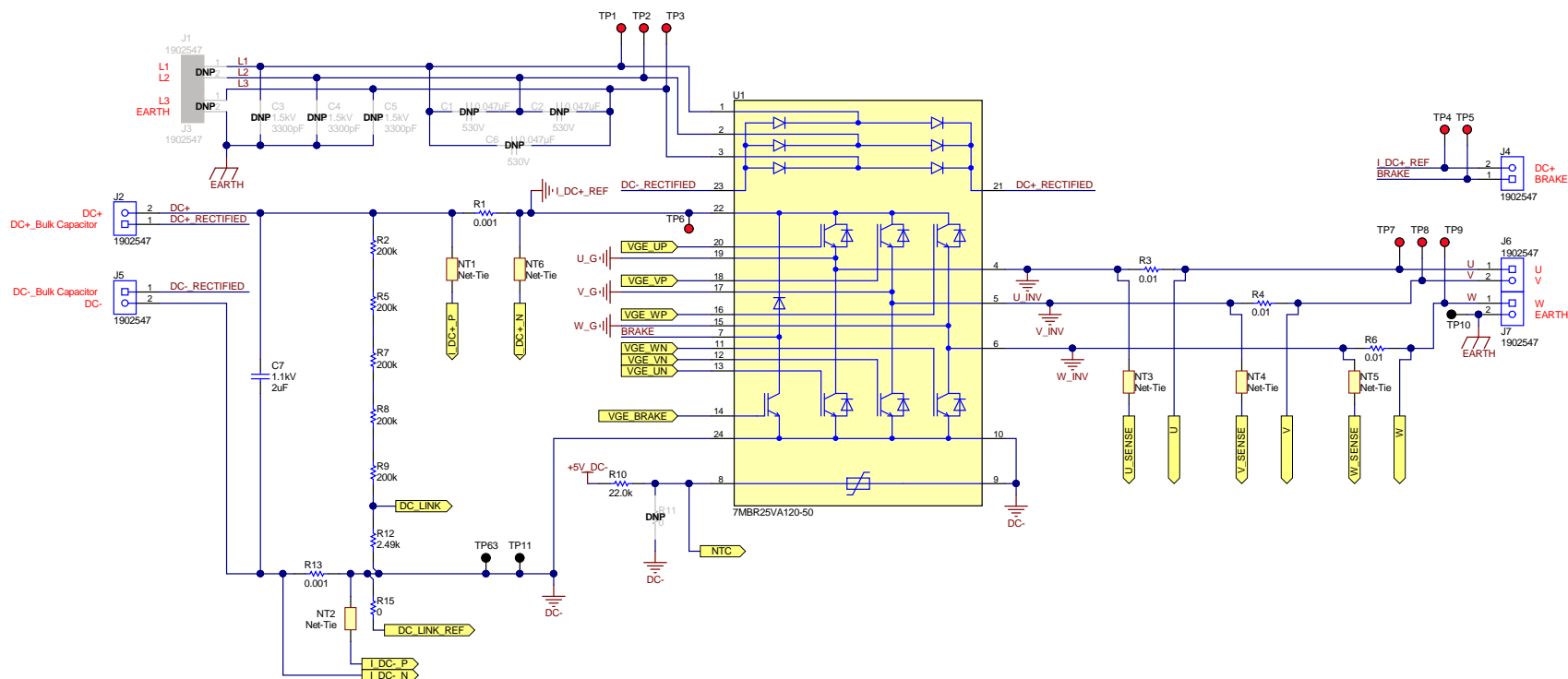


1		2		3		4		5		6	
										Revision History	
Rev		ECN #		Approved Date		Approved by		Notes			
N/A		N/A		N/A		N/A		N/A			
A											
B											
C											
D											
D											
D											
D											
D											
D											
D											
D											
D											
D											
D											
D											
D											
D											
D											
D											
D											
D											
D											
D											
D											
D											
D											
D											
D											
D											
D											
D											
D											
D											
D											
D											
D											
D											
D											
D											
D											
D											
D											
D											
D											
D											
D											
D											
D											
D											
D											
D											
D											
D											
D											
D											
D											
D											
D											
D											
D											
D											
D											
D											
D											
D											
D											
D											
D											
D											
D											
D											
D											
D											
D											
D											
D											
D											
D											
D											
D											
D											
D											
D											
D											
D											
D											
D											
D											
D											
D											
D											
D											
D											
D											
D											
D											
D											
D											
D											
D											
D											
D											
D											
D											
D											
D											
D											
D											
D											
D											
D											
D											
D											
D											
D											


Texas Instruments and/or its licensors do not warrant the accuracy or completeness of this specification or any information contained therein. Texas Instruments and/or its licensors do not warrant that this design will meet the specifications, will be suitable for your application or fit for any particular purpose, or will operate in an implementation. Texas Instruments and/or its licensors do not warrant that the design is production worthy. You should completely validate and test your design implementation to confirm the system functionality for your application.

Orderable:	Designed for: Public Release		Mod. Date: 8/9/2018
TID #:	TIDA-010025		Project Title: MotorDrive Inverter with Opto-emulated Gate Driver
Number:	010025	Rev: E1	Sheet Title: Cover Sheet
SVN Rev:	Not in version control		Assembly Variant: AMC1300-G1
Drawn By:			File: TIDA-010025_CoverSheet.SchDoc
Engineer:	PN		Contact: http://www.ti.com/Support

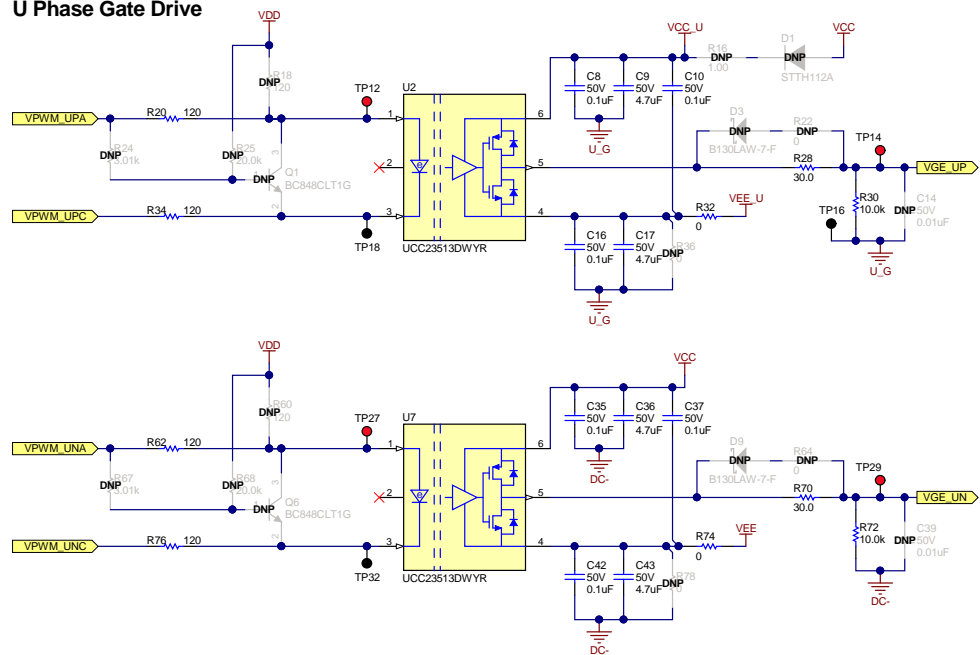
Inverter Power Stage



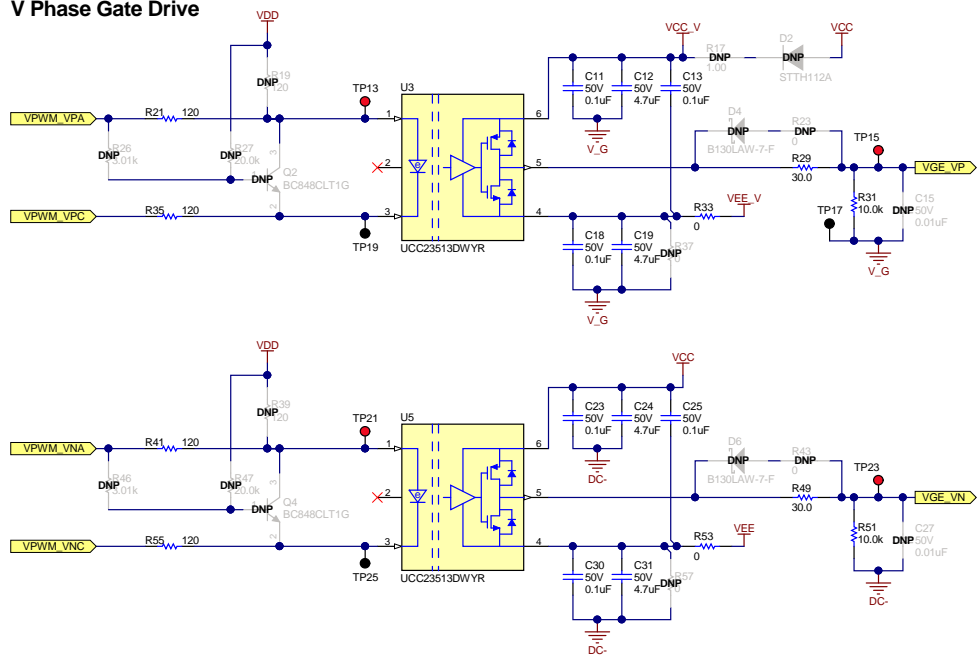
Texas Instruments and/or its licensors do not warrant the accuracy or completeness of this specification or any information contained therein. Texas Instruments and/or its licensors do not warrant that this design will meet the specifications, will be suitable for your application or fit for any particular purpose, or will operate in an implementation. Texas Instruments and/or its licensors do not warrant that the design is production worthy. You should completely validate and test your design implementation to confirm the system functionality for your application.

Orderable:		Designed for: <u>Public Release</u>		Mod. Date: 10/11/2018	
TID #: <u>TIDA-010025</u>		Project Title: <u>Motor/Drive Inverter with Opto-emulated Gate Driver</u>			
Number: <u>010025</u>	Rev: <u>E1</u>	Sheet Title: <u>Power Stage</u>			
SVN Rev: Not in version control		Assembly Variant: <u>AMC1300-G1</u>		Sheet: <u>2</u> of <u>6</u>	
Drawn by:		File: <u>TIDA-010025_PowerStage3Phase.SchDoc</u>			Size: B
Engineer: <u>PN</u>		Contact: <u>http://www.ti.com/support</u>			 http://www.ti.com © Texas Instruments 2018

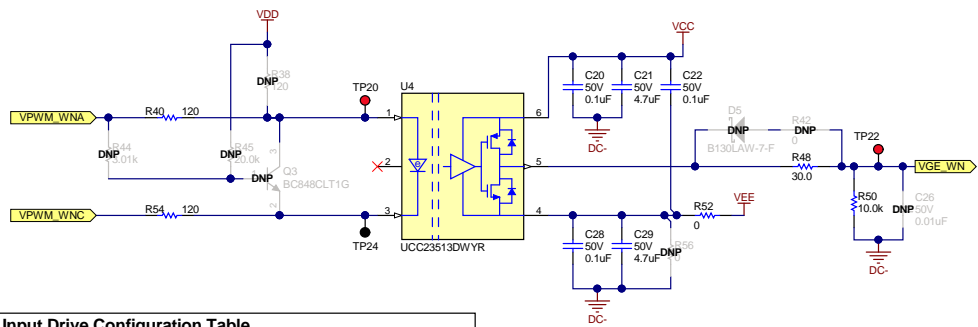
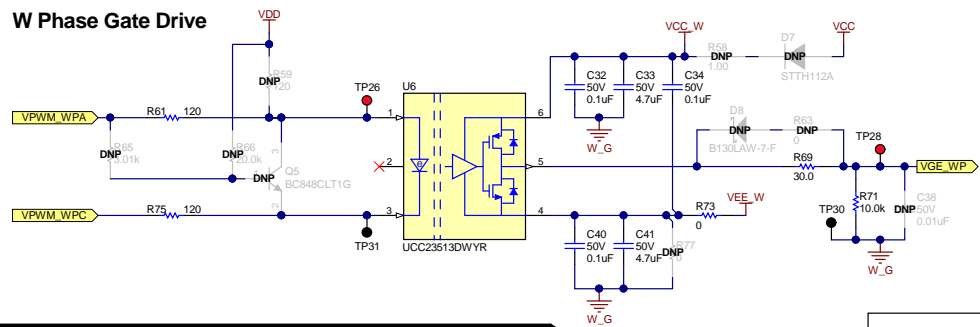
U Phase Gate Drive



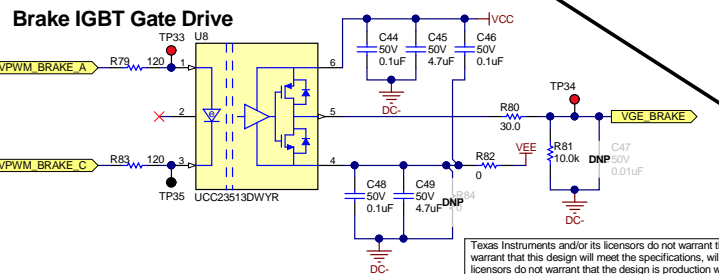
V Phase Gate Drive



W Phase Gate Drive



Brake IGBT Gate Drive




Input Drive Configuration Table

Configuration	DNP
Buffer Drive at Anode	R18,19,24,25,26,27,38,39,44,45,46,47,59,60,65,66,67,68,Q1,2,3,4,5,6
Buffer Drive at Cathode	R18,19,24,25,26,27,38,39,44,45,46,47,59,60,65,66,67,68,Q1,2,3,4,5,6
Buffer Interlocking P and N side Drivers	R18,19,24,25,26,27,38,39,44,45,46,47,59,60,65,66,67,68,Q1,2,3,4,5,6
Series NPN transistor drive	R18,19,24,25,26,27,38,39,44,45,46,47,59,60,65,66,67,68,Q1,2,3,4,5,6
Parallel NPN Transistor Drive	R20,21,40,41,61,62

Default Configuration: Gate drive input - Buffer drive at anode
Gate drive power supply - Bipolar External

Texas Instruments and/or its licensors do not warrant the accuracy or completeness of this specification or any information contained therein. Texas Instruments and/or its licensors do not warrant that this design will meet the specifications, will be suitable for any application or fit for any particular purpose, or will operate in an implementation. Texas Instruments and/or its licensors do not warrant that the design is production worthy. You should completely validate and test your design implementation to confirm the system functionality for your application.

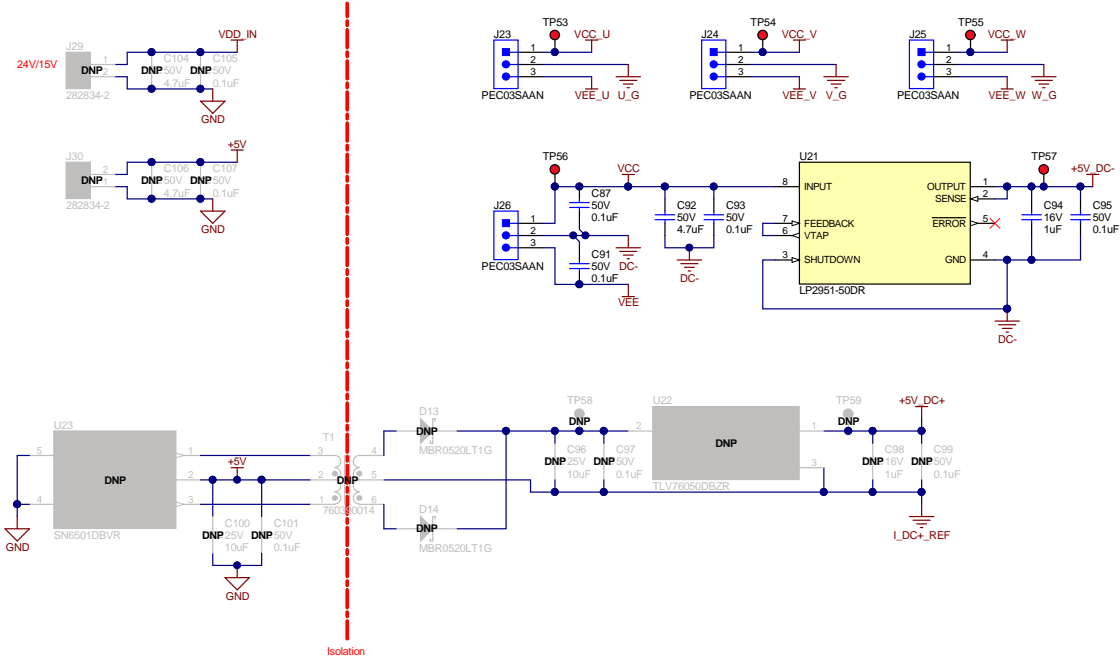
Orderable:	TIDA-010025	Designed for: Public Release	Mod. Date: 10/10/2018
Project Title:	Motor Drive Inverter with Opto-emissive Gate Driver	Sheet Title:	Isolated Gate Drive
Number:	010025	Rev:	E1
SVN Rev:	Not in version control	Assembly Variant:	AMC1300-G1
Drawn By:	PN	File:	TIDA-010025_IsolatedGateDriver_SchDoc
Engineer:	PN	Contact:	http://www.ti.com/support

Title: TIDA-010025		Designed for: Public Release		Mod. Date: 10/11/2018	
Order #: 010025		Project Title: MotorDrive Inverter with Opto-emulated Gate Driver		 TEXAS INSTRUMENTS	
Number: 010025	Rev: E1	Sheet Title: Current Voltage Sensing			
SVN Rev. Not in version control		Assembly Variant: AMC1300-G1		Sheet: 4 of 6	
Drawn By:		File: TIDA-010025_CurrentVoltageSensing_SchDoc		Size: B	
Engineer: PN		Contact: http://www.ti.com/support		http://www.ti.com © Texas Instruments 2016	

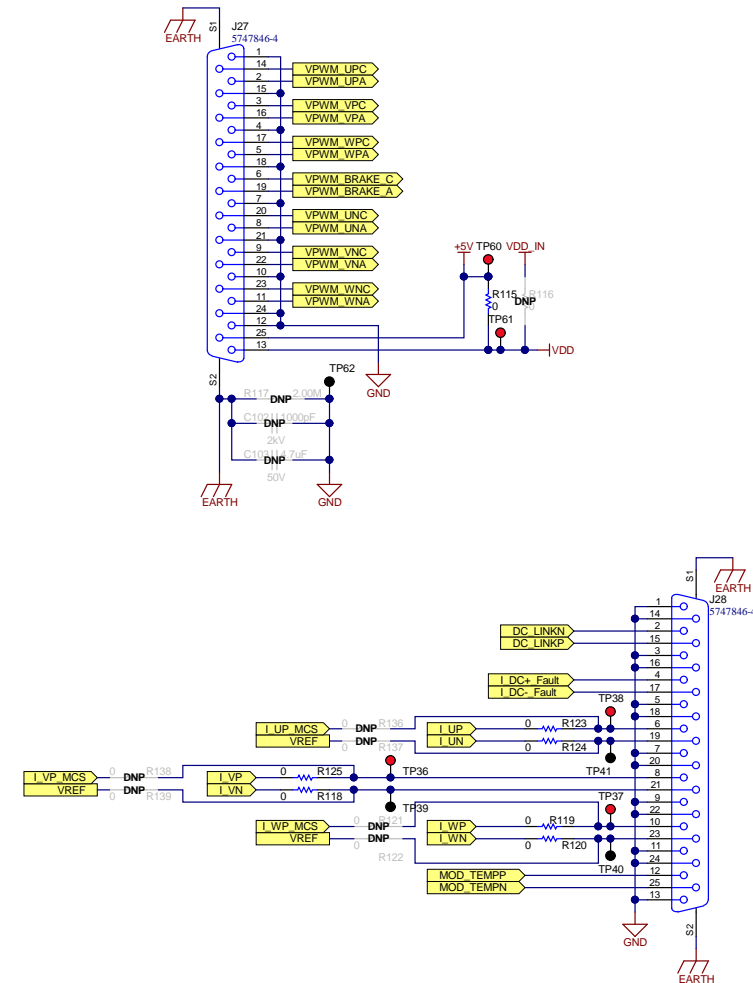


© Texas Instruments 2018

Power Supply



Control Card Interface



Texas Instruments and/or its licensors do not warrant the accuracy or completeness of this specification or any information contained therein. Texas Instruments and/or its licensors do not warrant that this design will meet the specifications, will be suitable for your application or fit for any particular purpose, or will operate in an implementation. Texas Instruments and/or its licensors do not warrant that the design is production worthy. You should completely validate and test your design implementation to confirm the system functionality for your application.

Orderable	Designed for: Public Release	Mod. Date: 8/9/2018
TID #:	Project Title: MotorDrive Inverter with Opto-emulated Gate Driver	
Number: 010025	Rev: E1	Sheet Title: Power Supply and Connector Interface
SVN Rev: Not in version control	Assembly Variant: AMC1300-G1	Sheet: 5 of 6
Drawn By:	File: TIDA-010025_IsolatedDcDc_SchDoc	Size: B
Engineer: PN	Contact: http://www.ti.com/support	





LOGO5



CAUTION HOT SURFACE

88

9

 TEXAS
INSTRUMENTS
<http://www.ti.com>
© Texas Instruments 2018