

bq27532EVM with bq27532 Battery Management Unit Impedance Track™ Fuel Gauge and bq24250 2-A, Switch-Mode Battery Charger for Single-Cell Applications

This evaluation module (EVM) is a complete evaluation system for the Battery Management Unit (BMU) chipset consisting of the bq27532-G1 fuel gauge and bq24250 battery charger. The EVM includes one bq27532 circuit, including a current sense resistor and one thermistor. In addition, the fuel gauge controls the settings of the bq24250 battery charger and monitors its status via I²C communication lines. Together, the chipset provides all necessary components to monitor and predict capacity for a system-side fuel gauge solution as well as to charge the battery from either an adapter or USB input with up to 2-A of charge current. The circuit module connects directly across the battery pack. With the EV2300 interface board and software, the user can read the bq27532-G1 data registers, program the chipset for different pack configurations, log cycling data for further evaluation, and evaluate the overall functionality of the battery management unit solution under different charge and discharge conditions. The latest Windows™-based PC software can be downloaded from the product folder on the Texas Instruments Web site.

Contents

1	Features.....	2
2	bq27532-Based Circuit Module	2
3	Circuit Module Physical Layouts, Bill of Materials, and Schematic	5
4	EVM Hardware and Software Setup	12
5	Troubleshooting Unexpected Dialog Boxes	12
6	Operation	13
7	Calibrate Screen.....	14
8	Advanced Communication I2C	17
9	Related Documentation From Texas Instruments	19

List of Figures

1	Schematic.....	3
2	bq27532EVM-001 Layout – Silk Screen	5
3	Layer 1	6
4	Layer 2	7
5	Layer 3	8
6	Layer 4	9
7	DataRAM Screen.....	13
8	Data Memory Screen	14
9	Calibration Screen.....	16
10	I ² C Pro Screen	17
11	Parameter Q&A Screen	18
12	Golden Image Output Screen	18
13	Perform Programming Screen.....	18

List of Tables

1	Ordering Information	2
---	----------------------------	---

Impedance Track is a trademark of Texas Instruments.
Windows, Microsoft are trademarks of Microsoft Corporation.

2	Bill of Materials	10
---	-------------------------	----

1 Features

- Complete evaluation system for the Battery Management Unit chipset consisting of the bq27532-G1 Impedance Track™ fuel gauge and bq24250 2-A Battery Charger.
- Populated circuit module for quick setup
- Personal computer (PC) software and interface board (orderable on TI website) for easy evaluation
- Software that allows data logging for system analysis (available in product folder on TI website)
- Ability to upgrade to the latest firmware version by flash reprogramming

1.1 Kit Contents

- bq27532-G1 and bq24250 chipset circuit module (PWR656)
- NTC103AT thermistor

This EVM is used for the evaluation of the bq27532-G1 and bq24250 BMU chipset. Ensure that you visit the product Web folder at www.ti.com to download the latest firmware version, evaluation software, and documentation for the associated product to be evaluated.

1.2 Ordering Information

Table 1. Ordering Information

EVM PART NUMBER	CHEMISTRY	CONFIGURATION	CAPACITY
bq27532EVM-656	Li-ion	1 cell	Any

2 bq27532-Based Circuit Module

The bq27532-based circuit module is a complete and compact example solution of a bq27532 circuit for battery management. The circuit module incorporates a bq27532 battery gas gauge integrated circuit (IC) and all other components necessary to accurately predict the capacity of 1-series Li-ion cell.

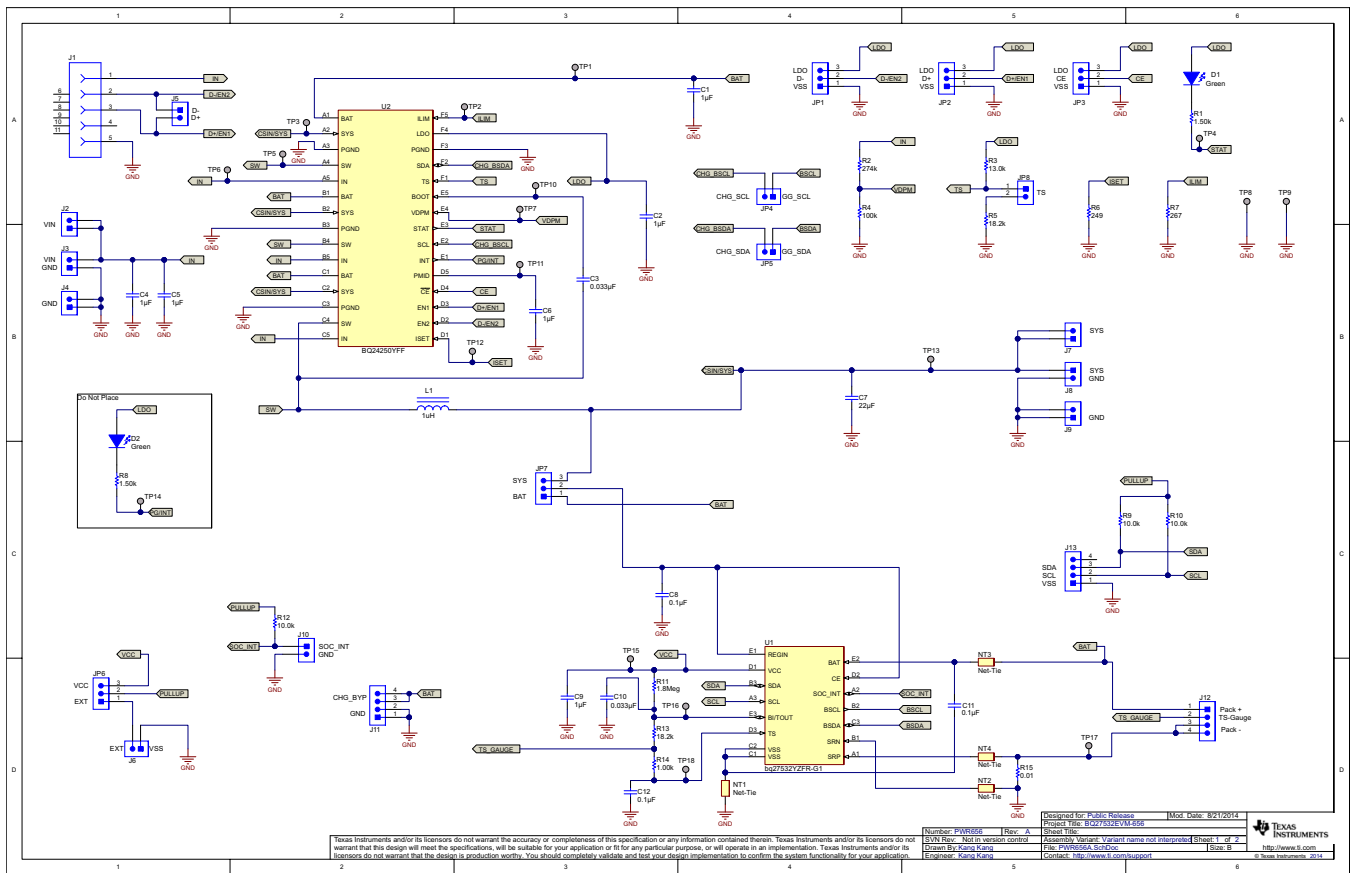


Figure 1. Schematic

2.1 Circuit Module Connections

Contacts on the circuit module provide the following connections:

- Direct connection to the battery pack (J12): Pack+, Pack–, and TS-Gauge
- To the serial communications port (J13): SDA, SCL, and V_{SS}
- To the system load (J8)
- To charger (J3)
- Access to charger bypass (J11): CHG_BYP, GND
- External pull-up for gauge I²C (J6): EXT, V_{SS}
- USB charger input (J1)

2.2 I/O Description

Header/Terminal Block	Description
J1	Micro-USB
J2-VIN	Adapter positive terminal
J3-VIN	Adapter positive terminal
J3-GND	Adapter negative terminal
J4-GND	Adapter negative terminal
J6-EXT	External gauge I ² C pull-up voltage
J7-SYS	System positive terminal

Header/Terminal Block	Description
J8-SYS	System positive terminal
J8-GND	System negative terminal
J9-GND	System negative terminal
J11-CHG_BYP	Charger bypass access
J12-Pack+	Battery positive terminal
J12-TS-Gauge	Pack thermistor input to gauge TS pin
J12-Pack-	Battery negative terminal
J13	I ² C access for gauge evaluation

2.3 Test Points

Test Point	Description
TP1	bq24250 BAT pin
TP2	bq24250 ILIM pin
TP3	bq24250 SYS pin
TP4	bq24250 STAT pin
TP5	bq24250 SW pin
TP6	bq24250 IN pin
TP7	bq24250 VDPM pin
TP8	GND
TP9	GND
TP10	bq24250 BOOT pin
TP11	bq24250 PMID pin
TP12	bq24250 ISET pin
TP13	System positive terminal
TP14	bq24250 INT pin
TP15	bq27532 V _{CC} pin
TP16	bq27532 BI/TOUT pin
TP17	Pack-
TP18	bq27532 TS pin

2.4 Control and Key Parameters Setting

Jumper	Description	Default Factory Setting
J5	Connects D+/EN1 and D-/EN2	NOT INSTALLED
J10	Connects SOC_INT to external pullup resistor	NOT INSTALLED
JP1	2-3 (D-/EN2 = HI): D-/EN2 to logic high 2-1 (D-/EN2 = LO): D-/EN2 to logic low	2-1 (D-/EN2 = LO)
JP2	2-3 (D+/EN1 = HI): D+/EN1 to logic high 2-1 (D+/EN1 = LO): D+/EN1 to logic low	2-1 (D+/EN1 = LO)
JP3	2-3 (CE = HI): To place the battery charge in standby mode 2-1 (CE = LO): Charge enable	2-1 (CE = LO)
JP4	Connects gauge BSCL to charger SCL	INSTALLED
JP5	Connects gauge BSDA to charger SDA	INSTALLED
JP6	2-3 (PULL_UP = V _{CC}): Ties I ² C pull-up resistor to gauge V _{CC} 2-1 (PULL_UP = EXT): Ties I ² C pull-up resistor to external source	2-3 (PULL_UP = V _{CC})
JP7	2-3 (REGIN = SYS): Powers gauge from system 2-1 (REGIN = BAT): Powers gauge from battery	2-3 (REGIN = SYS)
JP8	Connects TS to pull-down resistor to force charger into cold temperature JEITA range	NOT INSTALLED

3 Circuit Module Physical Layouts, Bill of Materials, and Schematic

This section contains the board layout, bill of materials, assembly drawings, and schematic for the bq27532 circuit module.

3.1 Board Layout

This section shows the printed-circuit board (PCB) layers (Figure 2 through Figure 5), assembly drawing, and schematic for the bq27532 module.

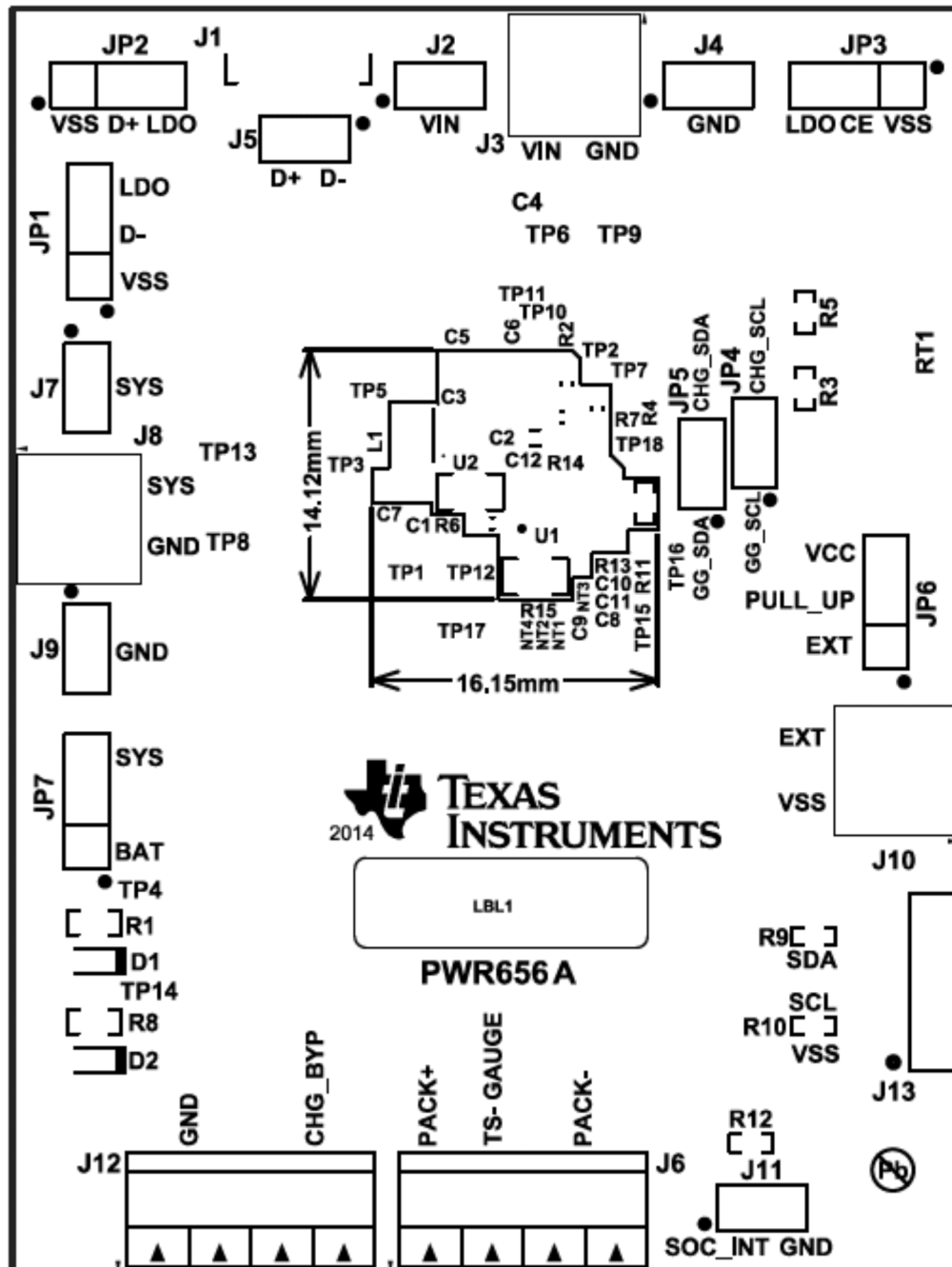


Figure 2. bq27532EVM-001 Layout – Silk Screen

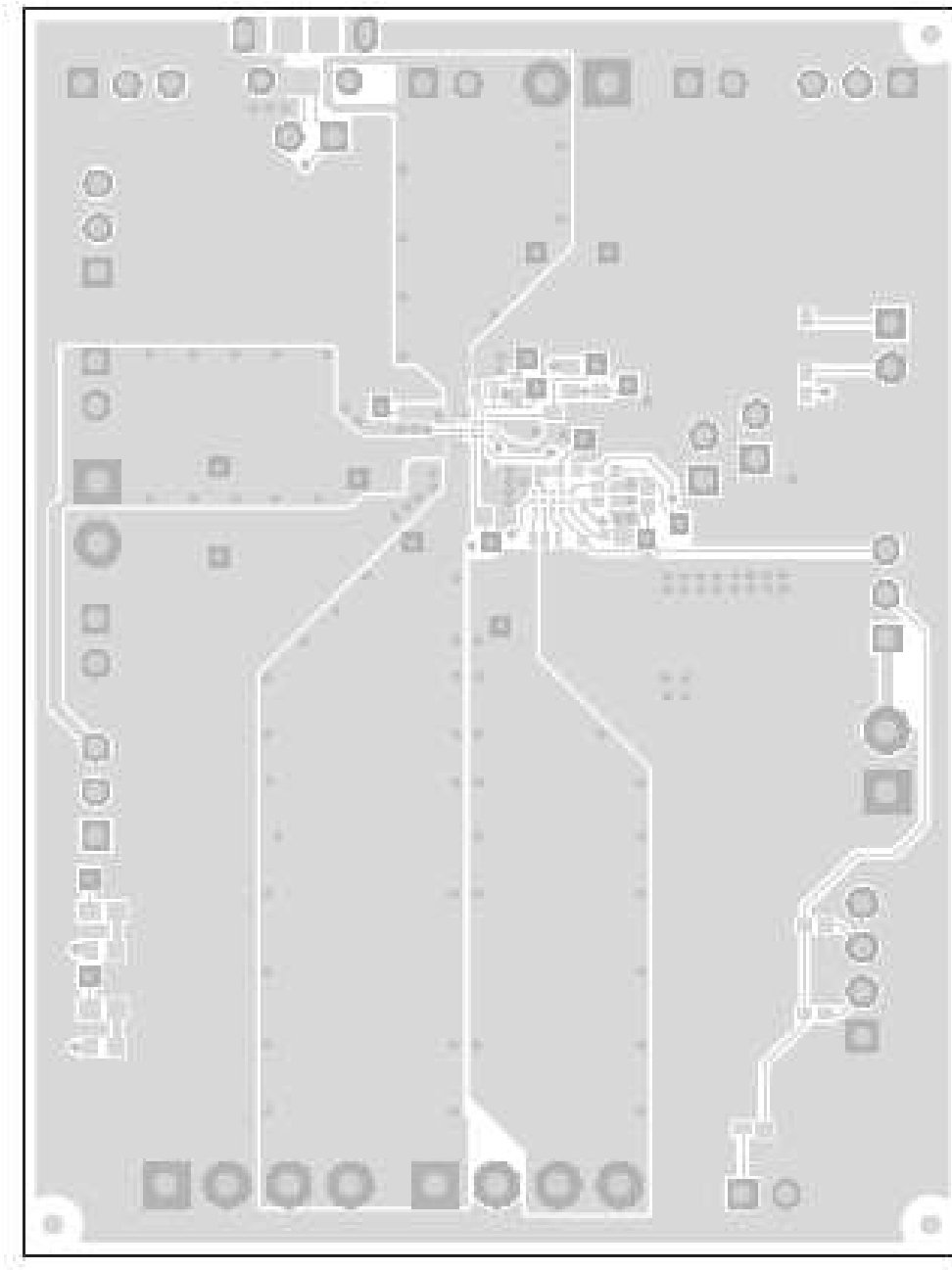


Figure 3. Layer 1

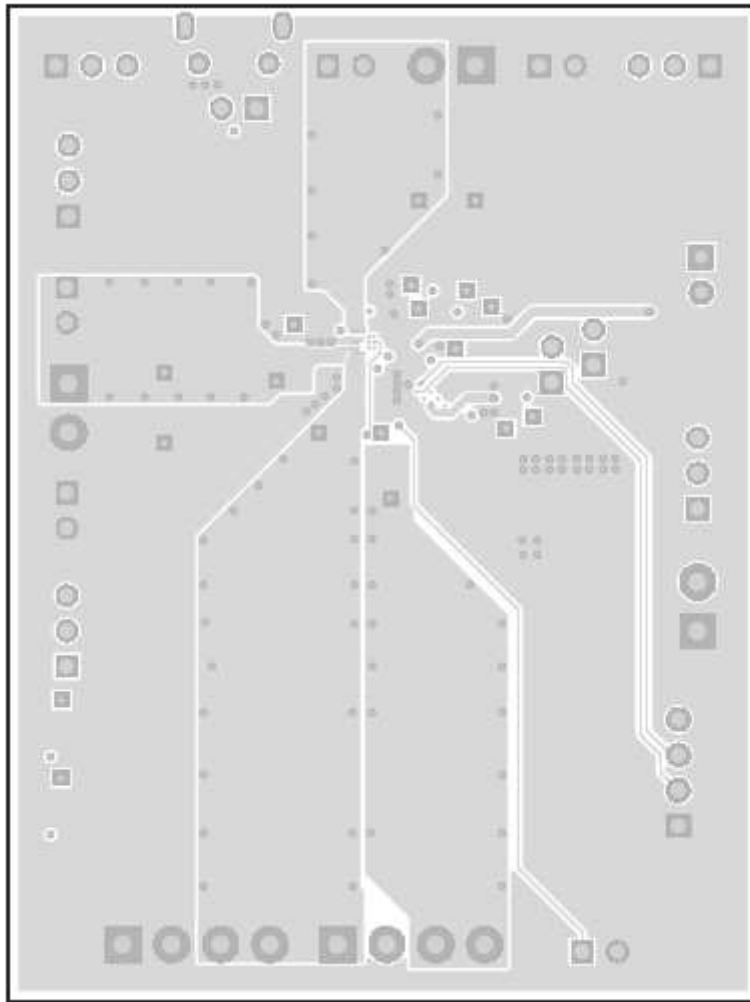


Figure 4. Layer 2

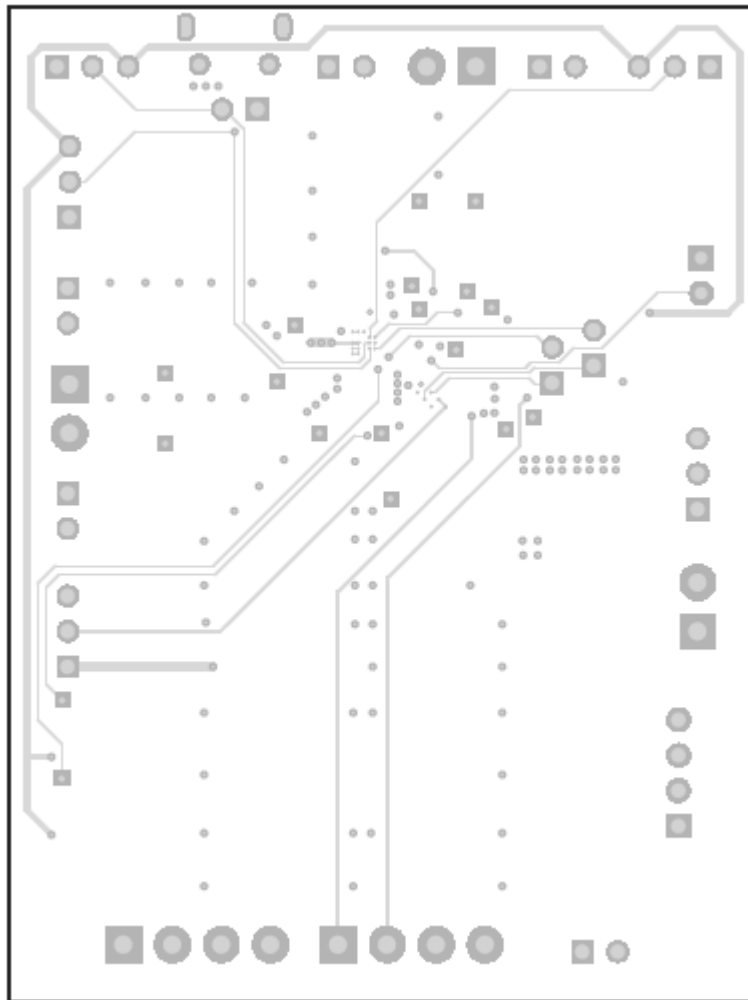


Figure 5. Layer 3

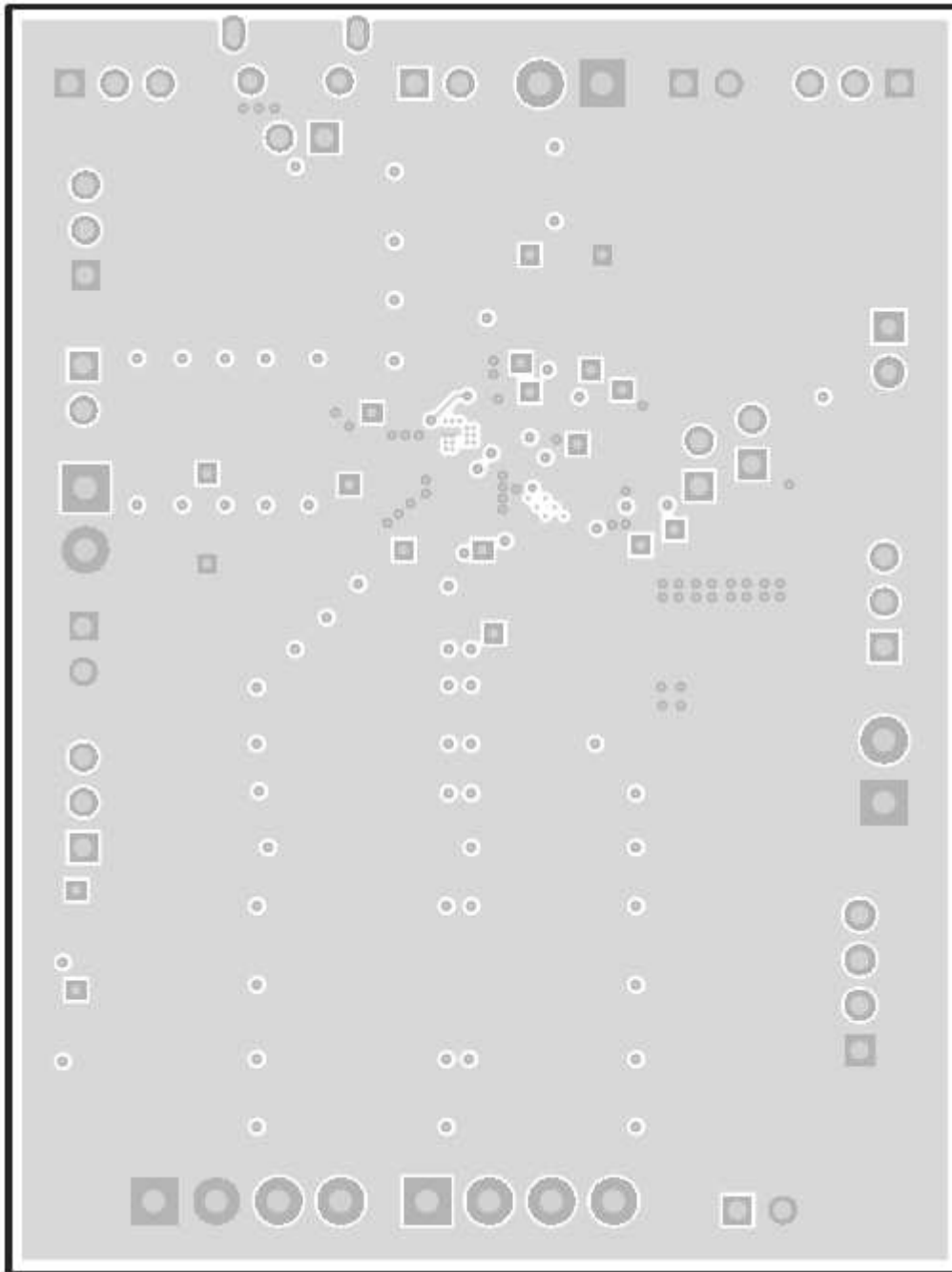


Figure 6. Layer 4

3.2 Bill of Materials and Schematic

Table 2. Bill of Materials

Designator	Quantity	Value	Description	Package Reference	Part Number	Manufacturer
C1	1	1 μ F	CAP, CERM, 1 μ F, 10V, \pm 10%, X5R, 0805	0805	GRM216R61A105KA01D	MuRata
C2	1	1 μ F	CAP, CERM, 1 μ F, 16V, \pm 10%, X7R, 0603	0603	GRM188R71C105KA12D	MuRata
C3, C10	2	0.033 μ F	CAP, CERM, 0.033 μ F, 25V, \pm 10%, X7R, 0402	0402	GRM155R71E333KA88D	MuRata
C4, C5	2	1 μ F	CAP, CERM, 1 μ F, 25V, \pm 10%, X5R, 0805	0805	GRM216R61E105KA12D	MuRata
C6	1	1 μ F	CAP, CERM, 1 μ F, 16V, \pm 10%, X5R, 0402	0402	C1005X5R1C105K050BC	TDK
C7	1	22 μ F	CAP, CERM, 22 μ F, 10V, \pm 20%, X5R, 0805	0805	CL21A226MPCLRNC	Samsung
C8, C11, C12	3	0.1 μ F	CAP, CERM, 0.1 μ F, 6.3V, \pm 10%, X5R, 0402	0402	C1005X5R0J104K	TDK
C9	1	1 μ F	CAP, CERM, 1 μ F, 10V, \pm 10%, X5R, 0402	0402	GRM155R61A105KE15D	MuRata
D1	1	Green	LED, Green, SMD	1.6 x 0.8 x 0.8 mm	LTST-C190GKT	Lite-On
J1	1		Connector, Receptacle, Micro-USB Type B, R/A, Bottom Mount SMT	Micro USB receptacle	105017-0001	Molex
J2, J4, J5, J7, J9, J10, JP4, JP5, JP8	9		Header, 100mil, 2x1, Tin plated, TH	Header, 2 Pin, 100 mil, Tin	PEC02SAAN	Sullins Connector Solutions
J3, J6, J8	3		Terminal Block, 6A, 3.5mm Pitch, 2-Pos, TH	7.0 x 8.2 x 6.5 mm	ED555/2DS	On-Shore Technology
J11, J12	2		Terminal Block, 6A, 3.5mm Pitch, 4-Pos, TH	14 x 8.2 x 6.5 mm	ED555/4DS	On-Shore Technology
J13	1		Header, 100 mil, 4x1, R/A, TH	4x1 R/A Header	22-05-3041	Molex
JP1, JP2, JP3, JP6, JP7	5		Header, 100 mil, 3x1, Tin plated, TH	Header, 3 Pin, 100 mil, Tin	PEC03SAAN	Sullins Connector Solutions
L1	1	1 μ H	Inductor, Shielded, Ferrite, 1 μ H, 3A, 0.045 Ω , SMD	2.5 x 1.2 x 2 mm	1239AS-H-1R0M	Toko
R1	1	1.50k	RES, 1.50k Ω , 1%, 0.1W, 0603	0603	CRCW06031K50FKEA	Vishay-Dale
R2	1	274k	RES, 274k Ω , 1%, 0.1W, 0603	0603	CRCW0603274KFKEA	Vishay-Dale
R3	1	13.0k	RES, 13.0k Ω , 1%, 0.063W, 0402	0402	CRCW040213K0FKED	Vishay-Dale
R4	1	100k	RES, 100k Ω , 1%, 0.1W, 0603	0603	RC0603FR-07100KL	Yageo America
R5, R13	2	18.2k	RES, 18.2k Ω , 1%, 0.063W, 0402	0402	CRCW040218K2FKED	Vishay-Dale
R6	1	249	RES, 249 Ω , 1%, 0.1W, 0603	0603	CRCW0603249RFKEA	Vishay-Dale
R7	1	267	RES, 267 Ω , 1%, 0.1W, 0603	0603	CRCW0603267RFKEA	Vishay-Dale
R9, R10, R12	3	10.0k	RES, 10.0k Ω , 1%, 0.063W, 0402	0402	CRCW040210K0FKED	Vishay-Dale
R11	1	1.8Meg	RES, 1.8M Ω , 5%, 0.063W, 0402	0402	CRCW04021M80JNED	Vishay-Dale
R14	1	1.00k	RES, 1.00k Ω , 1%, 0.063W, 0402	0402	CRCW04021K00FKED	Vishay-Dale
R15	1	0.01	RES, 0.01 Ω , 1%, 0.25W, 0805	0805	WSL0805R0100FEA18	Vishay-Dale
U1	1		Battery Management Unit Impedance Track™ Fuel Gauge for bq2425x Charger, YZF0015BFAN	YZF0015BFAN	bq27532YZFR-G1	Texas Instruments

Table 2. Bill of Materials (continued)

Designator	Quantity	Value	Description	Package Reference	Part Number	Manufacturer
U2	1		2.0A Single Input I ² C/Stand-alone Switch-Mode Li-Ion Battery Charger with Power-Path Management, YFF0030ABAB	YFF0030ABAB	BQ24250YFF	Texas Instruments
D2	0	Green	LED, Green, SMD	1.6x0.8x0.8mm	LTST-C190GKT	Lite-On
R8	0	1.50k	RES, 1.50kΩ, 1%, 0.1W, 0603	0603	CRCW06031K50FKEA	Vishay-Dale
TP1, TP2, TP3, TP4, TP5, TP6, TP7, TP8, TP9, TP10, TP11, TP12, TP13, TP14, TP15, TP16, TP17, TP18	0		TEST POINT pad Nothing to buy or mount.			

4 EVM Hardware and Software Setup

This section describes how to connect the different components of the EVM how to install the bq27532EVM PC software and.

4.1 Software System Requirements

The bq27532EVSW software requires 32-bit versions of Windows 2000 or Windows XP. Drivers for Windows 98SE are provided, but Microsoft™ no longer supports Windows 98; therefore, Windows 98 can have issues with USB driver support. The EV2300 USB drivers have been tested for Windows 98SE, but no assurance is made for problem-free operation with specific system configurations.

4.2 Software Installation

Find the latest software version in the bq27532 tool folder on power.ti.com. Make a search by part number for bq27532 to access the tool folder.

4.2.1 Using EV2300

Use the following steps to install the bq27532EVSW software when using EV2300:

1. Ensure that the EV2300 is not connected to the PC through a USB cable before starting this procedure.
2. Browse for the supported software link within the bq27532 TI web site product folder to find the downloadable evaluation software (EVSW) installation files.
3. Open the software file that was downloaded from the TI web site.
4. Follow the instructions on screen until the software installation is completed.
5. Before starting the EVSW, connect the EV2300 to the computer using the USB cable.
6. Wait until the system prompt "new hardware found" appears. Choose "select location manually", and use the "browse" button to point to subdirectory TIUSBWin2K-XP-1.
7. Answer "continue" to the warning that drivers are not certified with Microsoft™.
8. After installation finishes, another system prompt "new hardware found" appears. Repeat steps 6 and 7, but specify the directory as TIUSBWin2K-XP-2.
9. Answer "continue" to the warning that drivers are not certified with Microsoft. Driver installation is now finished.

4.2.2 Using EV2400:

1. Ensure that the EV2400 is not connected to the PC through a USB cable before starting this procedure.
2. Browse for the supported software link within the bq27532 TI web site product folder to find the downloadable EVSW installation files.
3. Open the software file that was downloaded from the TI web site.
4. Follow the instructions on screen until the software installation is completed.

5 Troubleshooting Unexpected Dialog Boxes

The user that is downloading the files must be logged in as the administrator.

The driver is not signed, so the administrator must allow installation of unsigned drivers in the operating system policy.

6 Operation

This section details the operation of the bq27532 EVSW software.

6.1 Starting the Program

Run bqStudio from the Start | All Programs | Texas Instruments | Battery Management Studio. The main screen (Figure 7) appears. Data begins to appear once the <Refresh> (single-time scan) button is clicked, or when the Scan button is clicked. To disable the scan feature, simply click the Scan button again.

The continuous scanning period can be set by opening Window | Preferences → Registers section. The range for this interval is 0 ms to 65,535 ms. Only items that are selected for scanning are scanned within this period.

Battery Management Studio provides a logging function which logs the values that were last scanned. To enable this function, select the Start Log button; this causes the Scan button to be pressed. When logging is Stopped, the Scan button will still be selected and has to be manually clicked again.

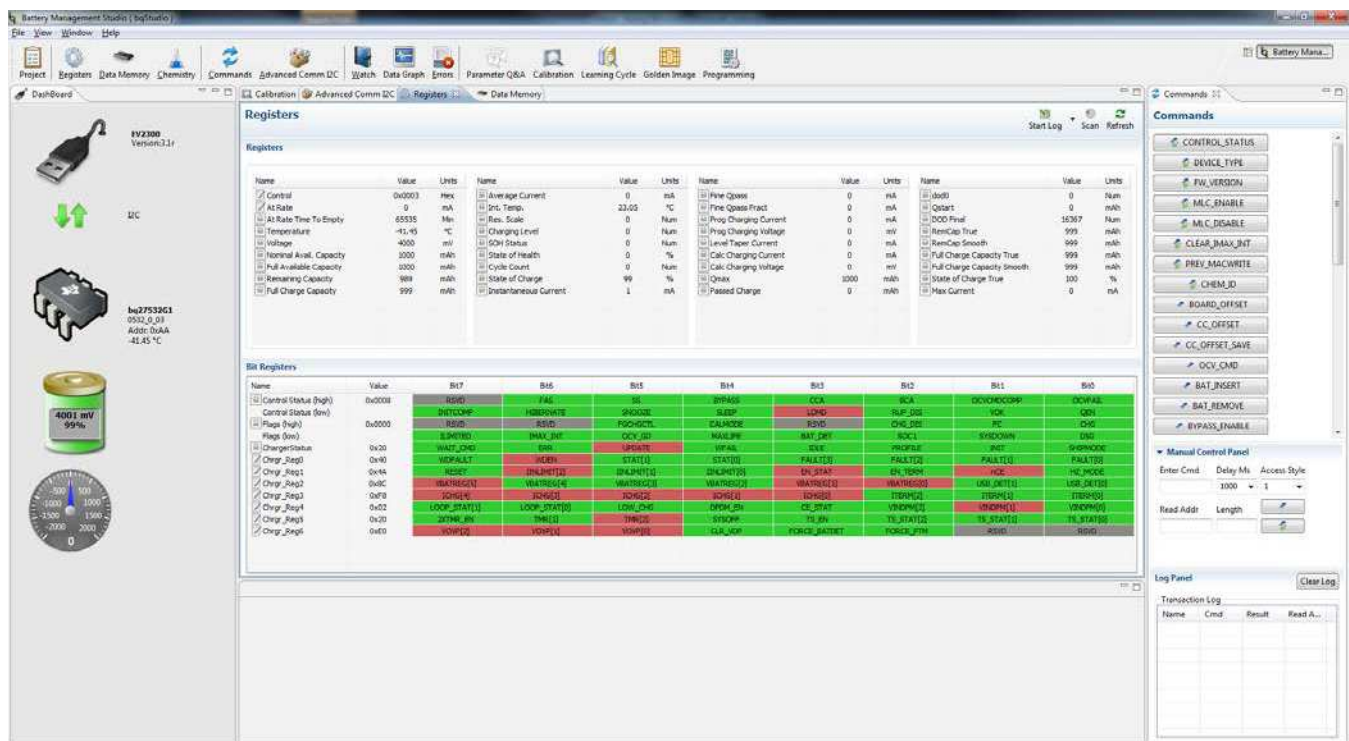


Figure 7. DataRAM Screen

This screen (Figure 7) shows the RAM data in the bq27532 device. Additional Flag and Status data can be viewed at the bottom of the Registers screen.

6.2 Setting Programmable bq27532 Options

The bq27532 data memory comes configured per the default settings detailed in the bq27532 technical reference manual (SLUUB04). Ensure that the settings are correctly changed to match the pack and application for the bq27532 solution being evaluated.

IMPORTANT: The correct setting of these options is essential to get the best performance.

The settings can be configured using the Data Memory screen (Figure 8).

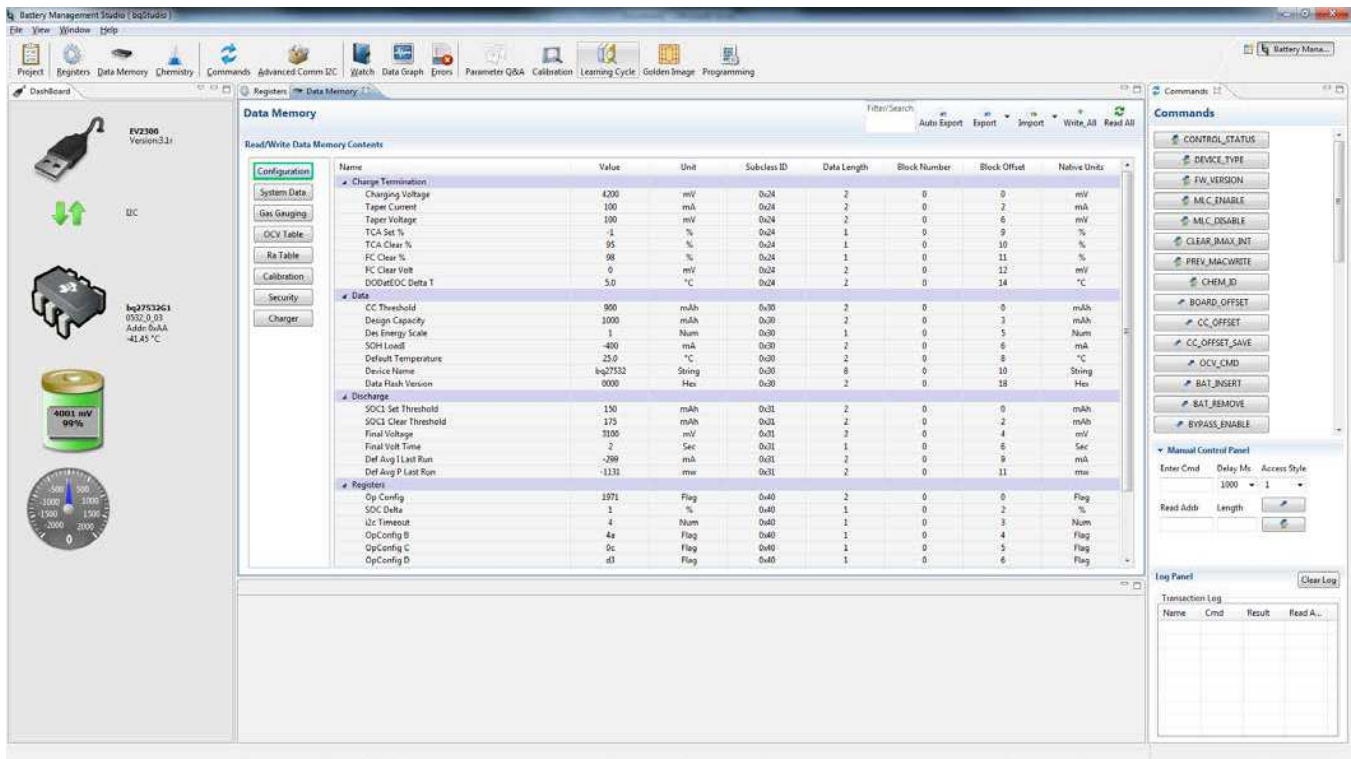


Figure 8. Data Memory Screen

To read all the data from the bq27532 data flash, click on menu option | Data Memory | Read All |.

To write to a data flash location, click on the desired location, enter the data and press <Enter>, which writes the entire tab of flash data, or select menu option | Data Flash | Write All |. The data flash must be read before any writes are performed to avoid any incorrect data being written to the device.

The data-flash configuration can be saved to a file by clicking | Export | and entering a file name. A data-flash file also can be retrieved in this way, | Import |, and written to the bq27532 using the | Write All | button.

The module calibration data is also held in the bq27532 data flash.

Battery Management Studio allows for an automatic data-flash export function, similar to the Registers logging function. This feature, when selected via | Auto Export | button, exports Data Flash to a sequential series of files named as *FilenameNNNNN.gg.csv* where N = a decimal number from 0 to 9.

The AutoExport interval is set under the | Window | Preferences → Data Memory | window with a default value of 1800 seconds. There is also the ability to select Classic or Default style. Classic is the standard .gg file that can be opened with typical notepad editors. Default style is the gg.csv which is a comma delimited file.

When AutoExport is pressed, the Auto Export is in progress. The same button is used to turn on/off AutoExport. AutoExport is typically used for troubleshooting experiments, but is highly recommended for any experiment. The standard AutoExport interval is typically 30 minutes.

7 Calibrate Screen

To ensure proper calibration, perform the following steps. These steps may or may not be required, depending on the type of calibration being performed. Only one calibration item can be selected and calibrated at a time.

7.1 To Calibrate the bq27532 EVM

Calibrate each item one at a time in the order presented in this document. Select the types of calibration to be performed by selecting the corresponding checkbox (see [Figure 9](#)).

Enter the measured values for the types selected, if necessary.

Then press the *Calibrate Part as indicated below* button. After all calibration is complete, close the Calibrate subwindow. While the Calibrate subwindow is open, even in the background, the calibration routines are running in firmware. Close the subwindow to ensure that they are stopped before proceeding with configuration or testing.

7.2 CC Offset Calibration

This performs the internal calibration of the coulomb counter input offset. Press the *Calibrate Coulomb Counter* button.

7.3 Voltage Calibration

- Measure the voltage across Pack+ and Pack– with a calibrated meter.
- Type the voltage value in mV into *Enter Actual Voltage* .
- Measure the temperature for PACK.
- Type the temperature value into *Enter Actual Temperature*.
- Press the *Calibrate Voltage and Temperature as indicated below* button.

7.4 Board Offset Calibration

This performs the offset calibration for the current offset of the board. It is expected that no current is flowing through the sense resistor while performing this calibration step.

- Remove load and short PACK– to GND.
- Press the *Calibration Board Offset* button.

7.5 Pack Current Calibration

- Connect a load to GND and SYS that draws approximately 1 A, or connect a current source to GND and Pack–. Ensure that the Measured Current reported is negative, or else reverse the connections.
- Measure the current with a calibrated meter, and type the value into *Enter Actual Current* using (–) for current in discharge direction.
- Press the *Calibrate Pack Current* button.

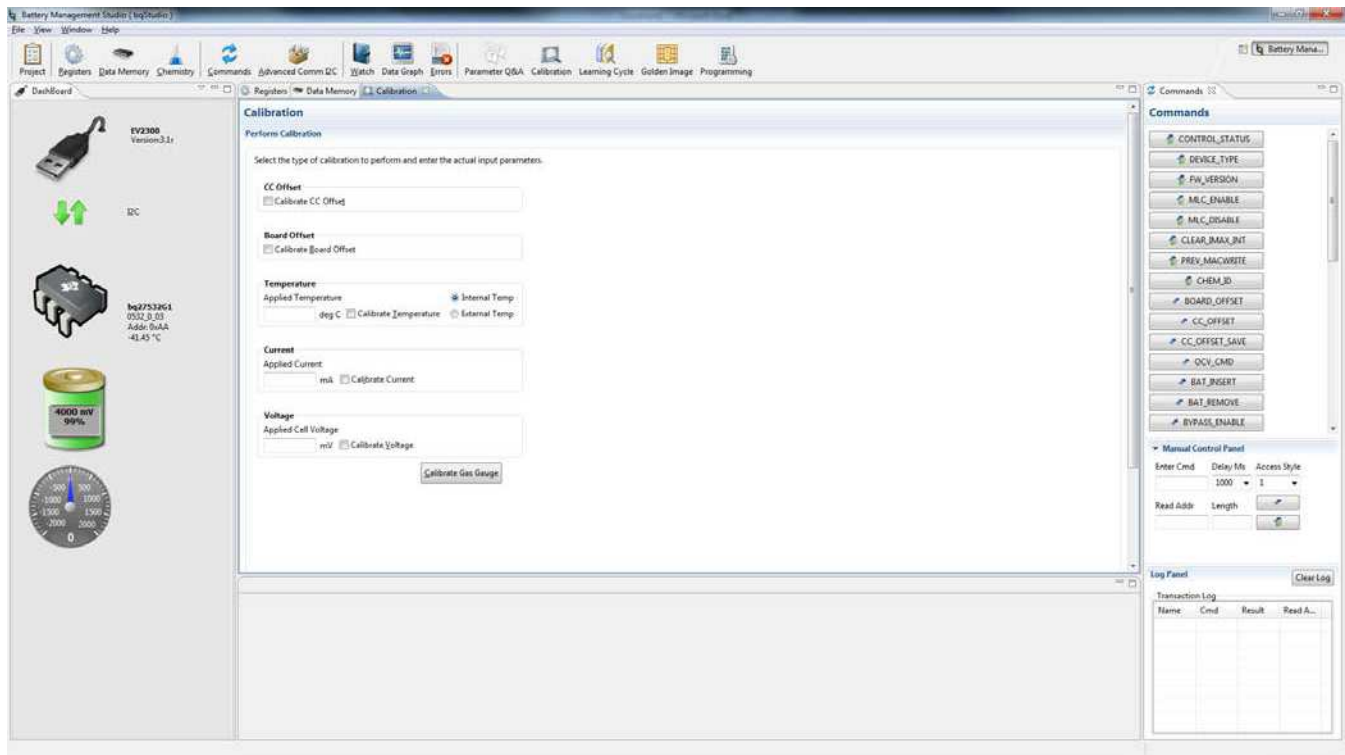


Figure 9. Calibration Screen

8 Advanced Communication I2C

I²C Communication

The read-write operations of the I2C Pro function is not specific to any gas gauge. These operations serve as general-purpose communication tools (Figure 10).

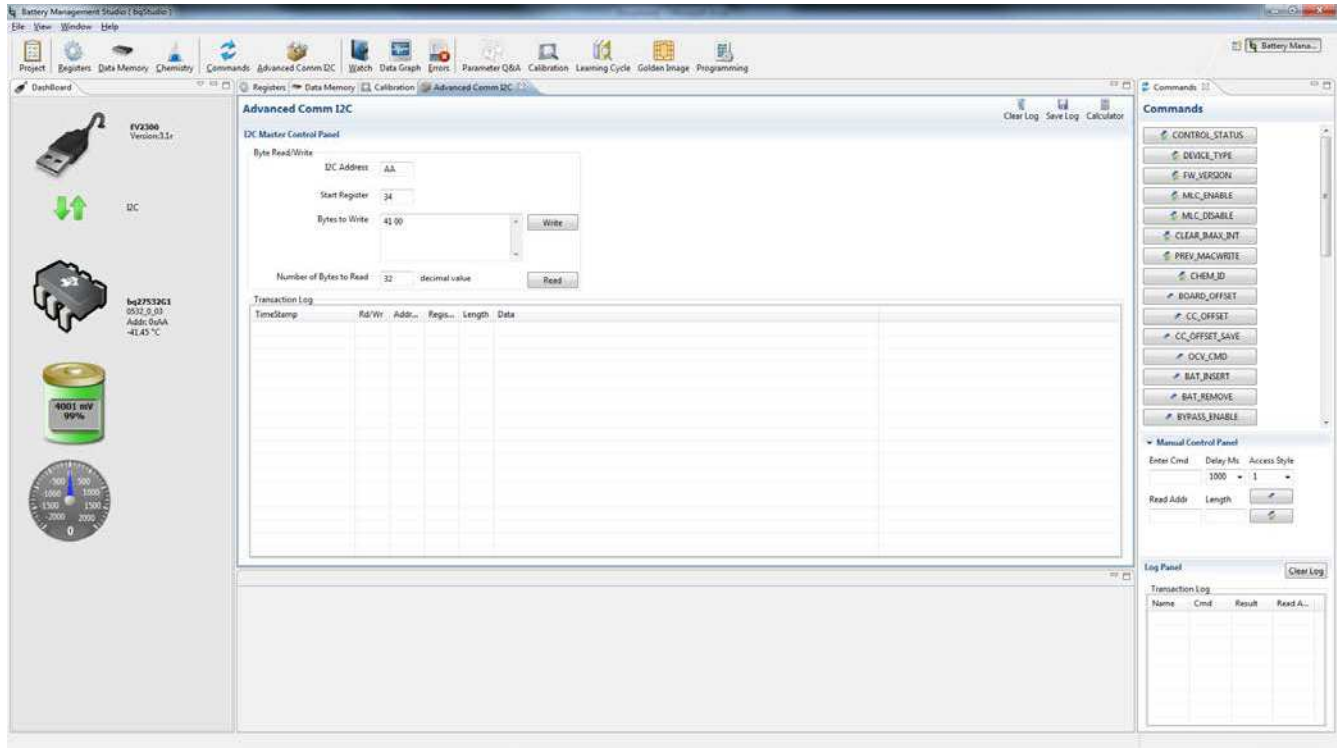


Figure 10. I²C Pro Screen

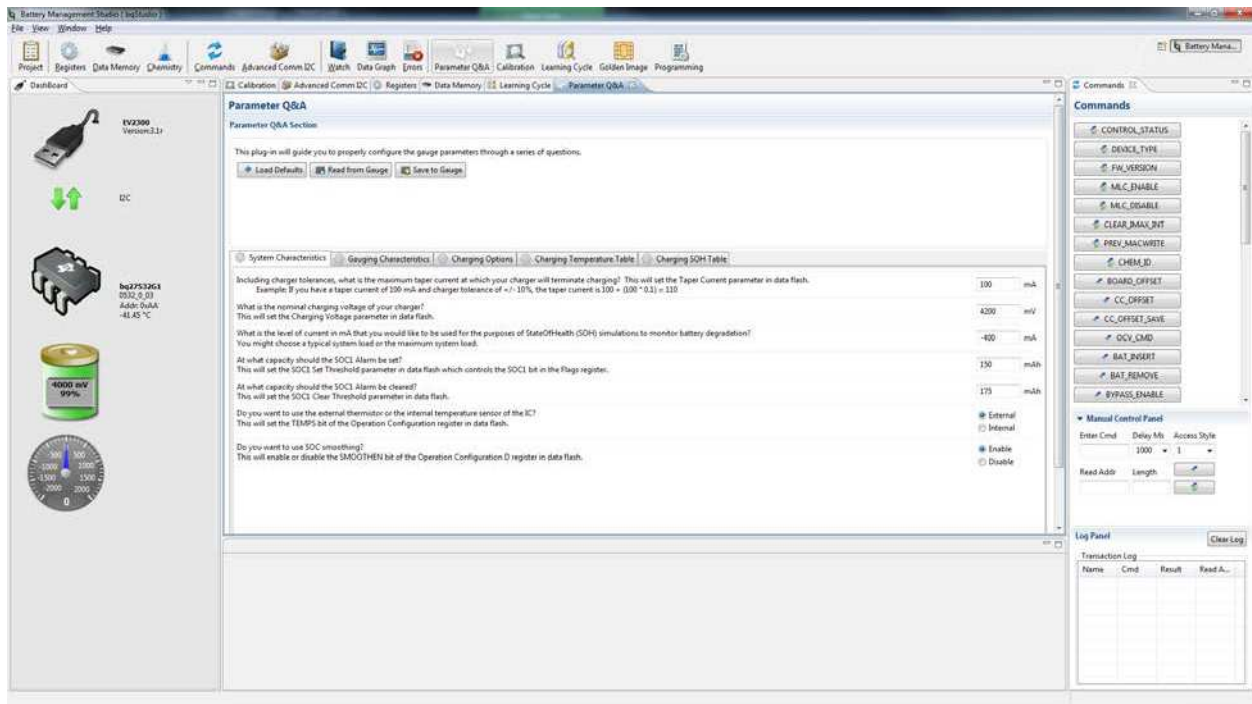


Figure 11. Parameter Q&A Screen

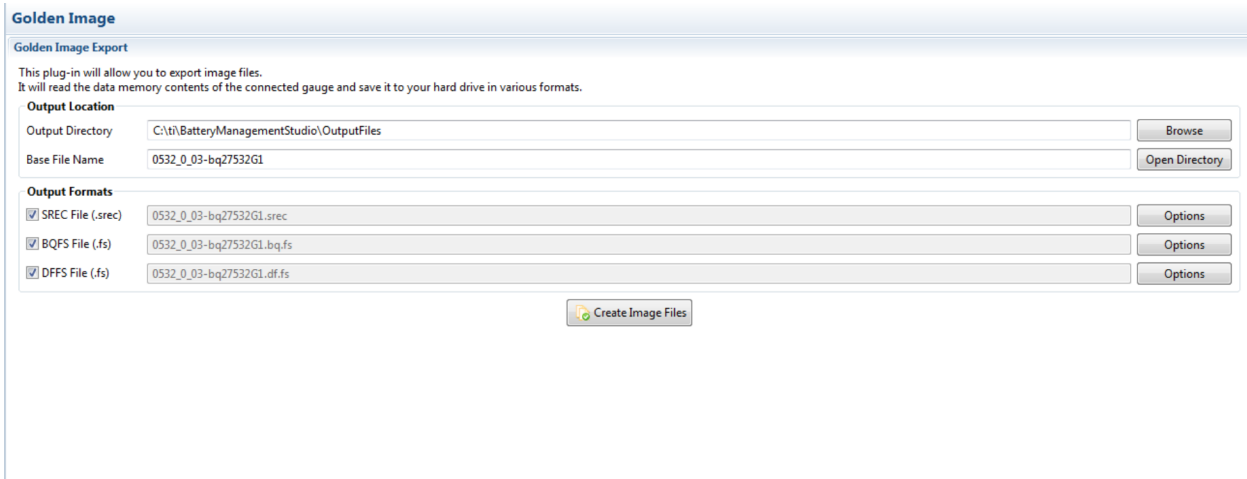


Figure 12. Golden Image Output Screen

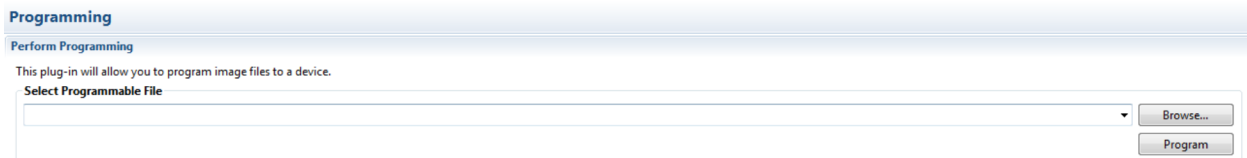


Figure 13. Perform Programming Screen

9 Related Documentation From Texas Instruments

To obtain a copy of any of the following TI documents, call the Texas Instruments Literature Response Center at (800) 477-8924 or the Support Center at (512) 434-1560. When ordering, identify this document by its title and literature number. Updated documents also can be obtained through the TI Web site at www.ti.com.

- *bq27532, System-Side Impedance Track™ Fuel Gauge With Integrated LDO* data sheet ([SLUSBU6](#))

STANDARD TERMS AND CONDITIONS FOR EVALUATION MODULES

1. *Delivery:* TI delivers TI evaluation boards, kits, or modules, including any accompanying demonstration software, components, or documentation (collectively, an "EVM" or "EVMs") to the User ("User") in accordance with the terms and conditions set forth herein. Acceptance of the EVM is expressly subject to the following terms and conditions.
 - 1.1 EVMs are intended solely for product or software developers for use in a research and development setting to facilitate feasibility evaluation, experimentation, or scientific analysis of TI semiconductors products. EVMs have no direct function and are not finished products. EVMs shall not be directly or indirectly assembled as a part or subassembly in any finished product. For clarification, any software or software tools provided with the EVM ("Software") shall not be subject to the terms and conditions set forth herein but rather shall be subject to the applicable terms and conditions that accompany such Software
 - 1.2 EVMs are not intended for consumer or household use. EVMs may not be sold, sublicensed, leased, rented, loaned, assigned, or otherwise distributed for commercial purposes by Users, in whole or in part, or used in any finished product or production system.
2. *Limited Warranty and Related Remedies/Disclaimers:*
 - 2.1 These terms and conditions do not apply to Software. The warranty, if any, for Software is covered in the applicable Software License Agreement.
 - 2.2 TI warrants that the TI EVM will conform to TI's published specifications for ninety (90) days after the date TI delivers such EVM to User. Notwithstanding the foregoing, TI shall not be liable for any defects that are caused by neglect, misuse or mistreatment by an entity other than TI, including improper installation or testing, or for any EVMs that have been altered or modified in any way by an entity other than TI. Moreover, TI shall not be liable for any defects that result from User's design, specifications or instructions for such EVMs. Testing and other quality control techniques are used to the extent TI deems necessary or as mandated by government requirements. TI does not test all parameters of each EVM.
 - 2.3 If any EVM fails to conform to the warranty set forth above, TI's sole liability shall be at its option to repair or replace such EVM, or credit User's account for such EVM. TI's liability under this warranty shall be limited to EVMs that are returned during the warranty period to the address designated by TI and that are determined by TI not to conform to such warranty. If TI elects to repair or replace such EVM, TI shall have a reasonable time to repair such EVM or provide replacements. Repaired EVMs shall be warranted for the remainder of the original warranty period. Replaced EVMs shall be warranted for a new full ninety (90) day warranty period.
3. *Regulatory Notices:*
 - 3.1 *United States*
 - 3.1.1 *Notice applicable to EVMs not FCC-Approved:*

This kit is designed to allow product developers to evaluate electronic components, circuitry, or software associated with the kit to determine whether to incorporate such items in a finished product and software developers to write software applications for use with the end product. This kit is not a finished product and when assembled may not be resold or otherwise marketed unless all required FCC equipment authorizations are first obtained. Operation is subject to the condition that this product not cause harmful interference to licensed radio stations and that this product accept harmful interference. Unless the assembled kit is designed to operate under part 15, part 18 or part 95 of this chapter, the operator of the kit must operate under the authority of an FCC license holder or must secure an experimental authorization under part 5 of this chapter.
 - 3.1.2 *For EVMs annotated as FCC – FEDERAL COMMUNICATIONS COMMISSION Part 15 Compliant:*

CAUTION

This device complies with part 15 of the FCC Rules. Operation is subject to the following two conditions: (1) This device may not cause harmful interference, and (2) this device must accept any interference received, including interference that may cause undesired operation.

Changes or modifications not expressly approved by the party responsible for compliance could void the user's authority to operate the equipment.

FCC Interference Statement for Class A EVM devices

NOTE: This equipment has been tested and found to comply with the limits for a Class A digital device, pursuant to part 15 of the FCC Rules. These limits are designed to provide reasonable protection against harmful interference when the equipment is operated in a commercial environment. This equipment generates, uses, and can radiate radio frequency energy and, if not installed and used in accordance with the instruction manual, may cause harmful interference to radio communications. Operation of this equipment in a residential area is likely to cause harmful interference in which case the user will be required to correct the interference at his own expense.

FCC Interference Statement for Class B EVM devices

NOTE: This equipment has been tested and found to comply with the limits for a Class B digital device, pursuant to part 15 of the FCC Rules. These limits are designed to provide reasonable protection against harmful interference in a residential installation. This equipment generates, uses and can radiate radio frequency energy and, if not installed and used in accordance with the instructions, may cause harmful interference to radio communications. However, there is no guarantee that interference will not occur in a particular installation. If this equipment does cause harmful interference to radio or television reception, which can be determined by turning the equipment off and on, the user is encouraged to try to correct the interference by one or more of the following measures:

- Reorient or relocate the receiving antenna.
- Increase the separation between the equipment and receiver.
- Connect the equipment into an outlet on a circuit different from that to which the receiver is connected.
- Consult the dealer or an experienced radio/TV technician for help.

3.2 Canada

3.2.1 For EVMs issued with an Industry Canada Certificate of Conformance to RSS-210

Concerning EVMs Including Radio Transmitters:

This device complies with Industry Canada license-exempt RSS standard(s). Operation is subject to the following two conditions: (1) this device may not cause interference, and (2) this device must accept any interference, including interference that may cause undesired operation of the device.

Concernant les EVMs avec appareils radio:

Le présent appareil est conforme aux CNR d'Industrie Canada applicables aux appareils radio exempts de licence. L'exploitation est autorisée aux deux conditions suivantes: (1) l'appareil ne doit pas produire de brouillage, et (2) l'utilisateur de l'appareil doit accepter tout brouillage radioélectrique subi, même si le brouillage est susceptible d'en compromettre le fonctionnement.

Concerning EVMs Including Detachable Antennas:

Under Industry Canada regulations, this radio transmitter may only operate using an antenna of a type and maximum (or lesser) gain approved for the transmitter by Industry Canada. To reduce potential radio interference to other users, the antenna type and its gain should be so chosen that the equivalent isotropically radiated power (e.i.r.p.) is not more than that necessary for successful communication. This radio transmitter has been approved by Industry Canada to operate with the antenna types listed in the user guide with the maximum permissible gain and required antenna impedance for each antenna type indicated. Antenna types not included in this list, having a gain greater than the maximum gain indicated for that type, are strictly prohibited for use with this device.

Concernant les EVMs avec antennes détachables

Conformément à la réglementation d'Industrie Canada, le présent émetteur radio peut fonctionner avec une antenne d'un type et d'un gain maximal (ou inférieur) approuvé pour l'émetteur par Industrie Canada. Dans le but de réduire les risques de brouillage radioélectrique à l'intention des autres utilisateurs, il faut choisir le type d'antenne et son gain de sorte que la puissance isotrope rayonnée équivalente (p.i.r.e.) ne dépasse pas l'intensité nécessaire à l'établissement d'une communication satisfaisante. Le présent émetteur radio a été approuvé par Industrie Canada pour fonctionner avec les types d'antenne énumérés dans le manuel d'usage et ayant un gain admissible maximal et l'impédance requise pour chaque type d'antenne. Les types d'antenne non inclus dans cette liste, ou dont le gain est supérieur au gain maximal indiqué, sont strictement interdits pour l'exploitation de l'émetteur

3.3 Japan

3.3.1 *Notice for EVMs delivered in Japan:* Please see http://www.tij.co.jp/lstds/ti_ja/general/eStore/notice_01.page 日本国内に輸入される評価用キット、ボードについては、次のところをご覧ください。
http://www.tij.co.jp/lstds/ti_ja/general/eStore/notice_01.page

3.3.2 *Notice for Users of EVMs Considered "Radio Frequency Products" in Japan:* EVMs entering Japan are NOT certified by TI as conforming to Technical Regulations of Radio Law of Japan.

If User uses EVMs in Japan, User is required by Radio Law of Japan to follow the instructions below with respect to EVMs:

1. Use EVMs in a shielded room or any other test facility as defined in the notification #173 issued by Ministry of Internal Affairs and Communications on March 28, 2006, based on Sub-section 1.1 of Article 6 of the Ministry's Rule for Enforcement of Radio Law of Japan,
2. Use EVMs only after User obtains the license of Test Radio Station as provided in Radio Law of Japan with respect to EVMs, or
3. Use of EVMs only after User obtains the Technical Regulations Conformity Certification as provided in Radio Law of Japan with respect to EVMs. Also, do not transfer EVMs, unless User gives the same notice above to the transferee. Please note that if User does not follow the instructions above, User will be subject to penalties of Radio Law of Japan.

【無線電波を送信する製品の開発キットをお使いになる際の注意事項】

本開発キットは技術基準適合証明を受けておりません。

本製品のご使用に際しては、電波法遵守のため、以下のいずれかの措置を取っていただく必要がありますのでご注意ください。

1. 電波法施行規則第6条第1項第1号に基づく平成18年3月28日総務省告示第173号で定められた電波暗室等の試験設備でご使用いただく。
2. 実験局の免許を取得後ご使用いただく。
3. 技術基準適合証明を取得後ご使用いただく。

なお、本製品は、上記の「ご使用にあたっての注意」を譲渡先、移転先に通知しない限り、譲渡、移転できないものとします。

上記を遵守頂けない場合は、電波法の罰則が適用される可能性があることをご留意ください。

日本テキサス・インスツルメンツ株式会社

東京都新宿区西新宿 6 丁目 2 4 番 1 号

西新宿三井ビル

3.3.3 *Notice for EVMs for Power Line Communication:* Please see http://www.tij.co.jp/llds/ti_ja/general/eStore/notice_02.page

電力線搬送波通信についての開発キットをお使いになる際の注意事項については、次のところをご覧ください。http://www.tij.co.jp/llds/ti_ja/general/eStore/notice_02.page

4 *EVM Use Restrictions and Warnings:*

4.1 EVMS ARE NOT FOR USE IN FUNCTIONAL SAFETY AND/OR SAFETY CRITICAL EVALUATIONS, INCLUDING BUT NOT LIMITED TO EVALUATIONS OF LIFE SUPPORT APPLICATIONS.

4.2 User must read and apply the user guide and other available documentation provided by TI regarding the EVM prior to handling or using the EVM, including without limitation any warning or restriction notices. The notices contain important safety information related to, for example, temperatures and voltages.

4.3 *Safety-Related Warnings and Restrictions:*

4.3.1 User shall operate the EVM within TI's recommended specifications and environmental considerations stated in the user guide, other available documentation provided by TI, and any other applicable requirements and employ reasonable and customary safeguards. Exceeding the specified performance ratings and specifications (including but not limited to input and output voltage, current, power, and environmental ranges) for the EVM may cause personal injury or death, or property damage. If there are questions concerning performance ratings and specifications, User should contact a TI field representative prior to connecting interface electronics including input power and intended loads. Any loads applied outside of the specified output range may also result in unintended and/or inaccurate operation and/or possible permanent damage to the EVM and/or interface electronics. Please consult the EVM user guide prior to connecting any load to the EVM output. If there is uncertainty as to the load specification, please contact a TI field representative. During normal operation, even with the inputs and outputs kept within the specified allowable ranges, some circuit components may have elevated case temperatures. These components include but are not limited to linear regulators, switching transistors, pass transistors, current sense resistors, and heat sinks, which can be identified using the information in the associated documentation. When working with the EVM, please be aware that the EVM may become very warm.

4.3.2 EVMs are intended solely for use by technically qualified, professional electronics experts who are familiar with the dangers and application risks associated with handling electrical mechanical components, systems, and subsystems. User assumes all responsibility and liability for proper and safe handling and use of the EVM by User or its employees, affiliates, contractors or designees. User assumes all responsibility and liability to ensure that any interfaces (electronic and/or mechanical) between the EVM and any human body are designed with suitable isolation and means to safely limit accessible leakage currents to minimize the risk of electrical shock hazard. User assumes all responsibility and liability for any improper or unsafe handling or use of the EVM by User or its employees, affiliates, contractors or designees.

4.4 User assumes all responsibility and liability to determine whether the EVM is subject to any applicable international, federal, state, or local laws and regulations related to User's handling and use of the EVM and, if applicable, User assumes all responsibility and liability for compliance in all respects with such laws and regulations. User assumes all responsibility and liability for proper disposal and recycling of the EVM consistent with all applicable international, federal, state, and local requirements.

5. *Accuracy of Information:* To the extent TI provides information on the availability and function of EVMs, TI attempts to be as accurate as possible. However, TI does not warrant the accuracy of EVM descriptions, EVM availability or other information on its websites as accurate, complete, reliable, current, or error-free.

6. *Disclaimers:*
- 6.1 EXCEPT AS SET FORTH ABOVE, EVMS AND ANY WRITTEN DESIGN MATERIALS PROVIDED WITH THE EVM (AND THE DESIGN OF THE EVM ITSELF) ARE PROVIDED "AS IS" AND "WITH ALL FAULTS." TI DISCLAIMS ALL OTHER WARRANTIES, EXPRESS OR IMPLIED, REGARDING SUCH ITEMS, INCLUDING BUT NOT LIMITED TO ANY IMPLIED WARRANTIES OF MERCHANTABILITY OR FITNESS FOR A PARTICULAR PURPOSE OR NON-INFRINGEMENT OF ANY THIRD PARTY PATENTS, COPYRIGHTS, TRADE SECRETS OR OTHER INTELLECTUAL PROPERTY RIGHTS.
- 6.2 EXCEPT FOR THE LIMITED RIGHT TO USE THE EVM SET FORTH HEREIN, NOTHING IN THESE TERMS AND CONDITIONS SHALL BE CONSTRUED AS GRANTING OR CONFERRING ANY RIGHTS BY LICENSE, PATENT, OR ANY OTHER INDUSTRIAL OR INTELLECTUAL PROPERTY RIGHT OF TI, ITS SUPPLIERS/LICENSORS OR ANY OTHER THIRD PARTY, TO USE THE EVM IN ANY FINISHED END-USER OR READY-TO-USE FINAL PRODUCT, OR FOR ANY INVENTION, DISCOVERY OR IMPROVEMENT MADE, CONCEIVED OR ACQUIRED PRIOR TO OR AFTER DELIVERY OF THE EVM.
7. *USER'S INDEMNITY OBLIGATIONS AND REPRESENTATIONS.* USER WILL DEFEND, INDEMNIFY AND HOLD TI, ITS LICENSORS AND THEIR REPRESENTATIVES HARMLESS FROM AND AGAINST ANY AND ALL CLAIMS, DAMAGES, LOSSES, EXPENSES, COSTS AND LIABILITIES (COLLECTIVELY, "CLAIMS") ARISING OUT OF OR IN CONNECTION WITH ANY HANDLING OR USE OF THE EVM THAT IS NOT IN ACCORDANCE WITH THESE TERMS AND CONDITIONS. THIS OBLIGATION SHALL APPLY WHETHER CLAIMS ARISE UNDER STATUTE, REGULATION, OR THE LAW OF TORT, CONTRACT OR ANY OTHER LEGAL THEORY, AND EVEN IF THE EVM FAILS TO PERFORM AS DESCRIBED OR EXPECTED.
8. *Limitations on Damages and Liability:*
- 8.1 *General Limitations.* IN NO EVENT SHALL TI BE LIABLE FOR ANY SPECIAL, COLLATERAL, INDIRECT, PUNITIVE, INCIDENTAL, CONSEQUENTIAL, OR EXEMPLARY DAMAGES IN CONNECTION WITH OR ARISING OUT OF THESE TERMS AND CONDITIONS OR THE USE OF THE EVMS PROVIDED HEREUNDER, REGARDLESS OF WHETHER TI HAS BEEN ADVISED OF THE POSSIBILITY OF SUCH DAMAGES. EXCLUDED DAMAGES INCLUDE, BUT ARE NOT LIMITED TO, COST OF REMOVAL OR REINSTALLATION, ANCILLARY COSTS TO THE PROCUREMENT OF SUBSTITUTE GOODS OR SERVICES, RETESTING, OUTSIDE COMPUTER TIME, LABOR COSTS, LOSS OF GOODWILL, LOSS OF PROFITS, LOSS OF SAVINGS, LOSS OF USE, LOSS OF DATA, OR BUSINESS INTERRUPTION. NO CLAIM, SUIT OR ACTION SHALL BE BROUGHT AGAINST TI MORE THAN ONE YEAR AFTER THE RELATED CAUSE OF ACTION HAS OCCURRED.
- 8.2 *Specific Limitations.* IN NO EVENT SHALL TI'S AGGREGATE LIABILITY FROM ANY WARRANTY OR OTHER OBLIGATION ARISING OUT OF OR IN CONNECTION WITH THESE TERMS AND CONDITIONS, OR ANY USE OF ANY TI EVM PROVIDED HEREUNDER, EXCEED THE TOTAL AMOUNT PAID TO TI FOR THE PARTICULAR UNITS SOLD UNDER THESE TERMS AND CONDITIONS WITH RESPECT TO WHICH LOSSES OR DAMAGES ARE CLAIMED. THE EXISTENCE OF MORE THAN ONE CLAIM AGAINST THE PARTICULAR UNITS SOLD TO USER UNDER THESE TERMS AND CONDITIONS SHALL NOT ENLARGE OR EXTEND THIS LIMIT.
9. *Return Policy.* Except as otherwise provided, TI does not offer any refunds, returns, or exchanges. Furthermore, no return of EVM(s) will be accepted if the package has been opened and no return of the EVM(s) will be accepted if they are damaged or otherwise not in a resalable condition. If User feels it has been incorrectly charged for the EVM(s) it ordered or that delivery violates the applicable order, User should contact TI. All refunds will be made in full within thirty (30) working days from the return of the components(s), excluding any postage or packaging costs.
10. *Governing Law:* These terms and conditions shall be governed by and interpreted in accordance with the laws of the State of Texas, without reference to conflict-of-laws principles. User agrees that non-exclusive jurisdiction for any dispute arising out of or relating to these terms and conditions lies within courts located in the State of Texas and consents to venue in Dallas County, Texas. Notwithstanding the foregoing, any judgment may be enforced in any United States or foreign court, and TI may seek injunctive relief in any United States or foreign court.

Mailing Address: Texas Instruments, Post Office Box 655303, Dallas, Texas 75265
Copyright © 2014, Texas Instruments Incorporated

IMPORTANT NOTICE

Texas Instruments Incorporated and its subsidiaries (TI) reserve the right to make corrections, enhancements, improvements and other changes to its semiconductor products and services per JESD46, latest issue, and to discontinue any product or service per JESD48, latest issue. Buyers should obtain the latest relevant information before placing orders and should verify that such information is current and complete. All semiconductor products (also referred to herein as "components") are sold subject to TI's terms and conditions of sale supplied at the time of order acknowledgment.

TI warrants performance of its components to the specifications applicable at the time of sale, in accordance with the warranty in TI's terms and conditions of sale of semiconductor products. Testing and other quality control techniques are used to the extent TI deems necessary to support this warranty. Except where mandated by applicable law, testing of all parameters of each component is not necessarily performed.

TI assumes no liability for applications assistance or the design of Buyers' products. Buyers are responsible for their products and applications using TI components. To minimize the risks associated with Buyers' products and applications, Buyers should provide adequate design and operating safeguards.

TI does not warrant or represent that any license, either express or implied, is granted under any patent right, copyright, mask work right, or other intellectual property right relating to any combination, machine, or process in which TI components or services are used. Information published by TI regarding third-party products or services does not constitute a license to use such products or services or a warranty or endorsement thereof. Use of such information may require a license from a third party under the patents or other intellectual property of the third party, or a license from TI under the patents or other intellectual property of TI.

Reproduction of significant portions of TI information in TI data books or data sheets is permissible only if reproduction is without alteration and is accompanied by all associated warranties, conditions, limitations, and notices. TI is not responsible or liable for such altered documentation. Information of third parties may be subject to additional restrictions.

Resale of TI components or services with statements different from or beyond the parameters stated by TI for that component or service voids all express and any implied warranties for the associated TI component or service and is an unfair and deceptive business practice. TI is not responsible or liable for any such statements.

Buyer acknowledges and agrees that it is solely responsible for compliance with all legal, regulatory and safety-related requirements concerning its products, and any use of TI components in its applications, notwithstanding any applications-related information or support that may be provided by TI. Buyer represents and agrees that it has all the necessary expertise to create and implement safeguards which anticipate dangerous consequences of failures, monitor failures and their consequences, lessen the likelihood of failures that might cause harm and take appropriate remedial actions. Buyer will fully indemnify TI and its representatives against any damages arising out of the use of any TI components in safety-critical applications.

In some cases, TI components may be promoted specifically to facilitate safety-related applications. With such components, TI's goal is to help enable customers to design and create their own end-product solutions that meet applicable functional safety standards and requirements. Nonetheless, such components are subject to these terms.

No TI components are authorized for use in FDA Class III (or similar life-critical medical equipment) unless authorized officers of the parties have executed a special agreement specifically governing such use.

Only those TI components which TI has specifically designated as military grade or "enhanced plastic" are designed and intended for use in military/aerospace applications or environments. Buyer acknowledges and agrees that any military or aerospace use of TI components which have **not** been so designated is solely at the Buyer's risk, and that Buyer is solely responsible for compliance with all legal and regulatory requirements in connection with such use.

TI has specifically designated certain components as meeting ISO/TS16949 requirements, mainly for automotive use. In any case of use of non-designated products, TI will not be responsible for any failure to meet ISO/TS16949.

Products

Audio	www.ti.com/audio
Amplifiers	amplifier.ti.com
Data Converters	dataconverter.ti.com
DLP® Products	www.dlp.com
DSP	dsp.ti.com
Clocks and Timers	www.ti.com/clocks
Interface	interface.ti.com
Logic	logic.ti.com
Power Mgmt	power.ti.com
Microcontrollers	microcontroller.ti.com
RFID	www.ti-rfid.com
OMAP Applications Processors	www.ti.com/omap
Wireless Connectivity	www.ti.com/wirelessconnectivity

Applications

Automotive and Transportation	www.ti.com/automotive
Communications and Telecom	www.ti.com/communications
Computers and Peripherals	www.ti.com/computers
Consumer Electronics	www.ti.com/consumer-apps
Energy and Lighting	www.ti.com/energy
Industrial	www.ti.com/industrial
Medical	www.ti.com/medical
Security	www.ti.com/security
Space, Avionics and Defense	www.ti.com/space-avionics-defense
Video and Imaging	www.ti.com/video

TI E2E Community

e2e.ti.com