

TPS54202H Step-Down Converter Evaluation Module

User's Guide



ABSTRACT

This user's guide contains background information for the TPS54202H as well as support documentation for the TPS54202HEVM-716 evaluation module (PWR716-001). Also included are the performance specifications, the schematic, and the bill of materials for the TPS54202HEVM-716.

Table of Contents

1 Introduction	2
1.1 Background	2
1.2 Performance Specification Summary	2
1.3 Modifications	3
2 Test Setup and Results	4
2.1 Input/Output Connections	4
2.2 Efficiency	5
2.3 Output Voltage Load Regulation	6
2.4 Output Voltage Line Regulation	6
2.5 Load Transients	7
2.6 Output Voltage Ripple	8
2.7 Input Voltage Ripple	10
2.8 Powering Up	11
2.9 Powering Down	12
3 Board Layout	13
3.1 Layout	13
4 Schematic and Bill of Materials	15
4.1 Schematic	15
4.2 Bill of Materials	15
5 Revision History	17

List of Figures

Figure 2-1. TPS54202HEVM-716 Efficiency	5
Figure 2-2. TPS54202HEVM-716 Low Current Efficiency	5
Figure 2-3. TPS54202HEVM-716 Load Regulation	6
Figure 2-4. TPS54202HEVM-716 Line Regulation	6
Figure 2-5. TPS54202HEVM-716 Transient Response	7
Figure 2-6. TPS54202HEVM-716 Output Ripple, $I_{OUT} = 2\text{ A}$	8
Figure 2-7. TPS54202HEVM-716 Output Ripple, $I_{OUT} = 100\text{ mA}$	8
Figure 2-8. TPS54202HEVM-716 Output Ripple, $I_{OUT} = 10\text{ mA}$	9
Figure 2-9. TPS54202HEVM-716 Output Ripple, $I_{OUT} = 0\text{ A}$	9
Figure 2-10. TPS54202HEVM-716 Input Ripple	10
Figure 2-11. TPS54202HEVM-716 Startup Relative to V_{IN}	11
Figure 2-12. TPS54202HEVM-716 Startup Relative to Enable	11
Figure 2-13. TPS54202HEVM-716 Shutdown Relative to V_{IN}	12
Figure 2-14. TPS54202HEVM-716 Shutdown Relative to EN	12
Figure 3-1. TPS54202HEVM-716 Top-Side Assembly	13
Figure 3-2. TPS54202HEVM-716 Bottom-Side Layout	14
Figure 4-1. TPS54202HEVM-716 Schematic	15

List of Tables

Table 1-1. Input Voltage and Output Current Summary.....	2
Table 1-2. TPS54202HEVM-716 Performance Specification Summary.....	2
Table 1-3. Recommended Component Values.....	3
Table 2-1. EVM Connectors and Test Points.....	4
Table 4-1. TPS54202HEVM-716 Bill of Materials.....	15

Trademarks

All trademarks are the property of their respective owners.

1 Introduction

This user's guide contains background information for the TPS54202H as well as support documentation for the TPS54202HEVM-716 evaluation module (PWR716-001). Also included are the performance specifications, the schematic, and the bill of materials for the TPS54202HEVM-716.

1.1 Background

The TPS54202H dc/dc converter is designed to provide up to a 2-A output from an input voltage source of 4.2 V to 28 V. Rated input voltage and output current range for the evaluation module are given in [Table 1-1](#). This evaluation module is designed to demonstrate the small printed-circuit-board areas that may be achieved when designing with the TPS54202H regulator. The switching frequency is internally set at a nominal 500 kHz. The high-side and low-side MOSFETs are incorporated inside the TPS54202H package along with the gate-drive circuitry. The low drain-to-source on resistance of the MOSFETs allow the TPS54202H to achieve high efficiencies and helps keep the junction temperature low at high output currents. The compensation components are integrated to the integrated circuit (IC), and an external divider allows for an adjustable output voltage. Additionally, the TPS54202H provides an adjustable undervoltage lockout input. The absolute maximum input voltage is 30 V for the TPS54202HEVM-716.

Table 1-1. Input Voltage and Output Current Summary

EVM	Input Voltage Range	Output Current Range
TPS54202HEVM-716	$V_{IN} = 4.2 \text{ V to } 28 \text{ V}$	0 A to 2 A

1.2 Performance Specification Summary

A summary of the TPS54202HEVM-716 performance specifications is provided in [Table 1-2](#). Specifications are given for an input voltage of $V_{IN} = 24 \text{ V}$ and an output voltage of 5.0 V, unless otherwise specified. The TPS54202HEVM-716 is designed and tested for $V_{IN} = 4.2 \text{ V to } 28 \text{ V}$. The ambient temperature is 25°C for all measurements, unless otherwise noted.

Table 1-2. TPS54202HEVM-716 Performance Specification Summary

Specification	Test Conditions	MIN	TYP	MAX	Unit
V_{IN} operating voltage range		4.2	24	28	V
V_{IN} start voltage			4.2		V
V_{IN} stop voltage			3.7		V
Output voltage set point			5		V
Output current range	$V_{IN} = 4.2 \text{ V to } 28 \text{ V}$	0		2	A
Line regulation	$I_O = 1 \text{ A}$, $V_{IN} = 8 \text{ V to } 28 \text{ V}$		±0.5%		
Load regulation	$V_{IN} = 12 \text{ V}$, $I_O = 0 \text{ A to } 2 \text{ A}$		±0.5%		
Load transient response	$I_O = 0.5 \text{ A to } 1.5 \text{ A}$	Voltage change		–150	mV
		Recovery time		150	µs
	$I_O = 1.5 \text{ A to } 0.5 \text{ A}$	Voltage change		150	mV
		Recovery time		150	µs
Input ripple voltage	$I_O = 2 \text{ A}$		400		mV _{PP}
Output ripple voltage	$I_O = 2 \text{ A}$		<30		mV _{PP}
Output rise time			5		ms
Center operating frequency			500		kHz

Table 1-2. TPS54202HEVM-716 Performance Specification Summary (continued)

Specification	Test Conditions	MIN	TYP	MAX	Unit
Maximum Efficiency	TPS54202HEVM-716, $V_{IN} = 12\text{ V}$, $I_O = 1\text{ A}$		94.06%		

1.3 Modifications

These evaluation modules are designed to provide access to the features of the TPS54202H. Some modifications can be made to this module.

1.3.1 Output Voltage Set Point

The voltage divider, R2 and R3, is used to set the output voltage. To change the output voltage of the EVM, it is necessary to change the value of resistor R3. Changing the value of R3 can change the output voltage above 0.596 V. The value of R3 for a specific output voltage can be calculated using [Equation 1](#). Use 100 kΩ for R2.

$$R3 = \frac{R2 \times 0.596\text{ V}}{V_{OUT} - 0.596\text{ V}} \quad (1)$$

[Table 1-3](#) lists the R2 and R3 values for some common output voltages. Note that V_{IN} must be in a range so that the minimum on-time is greater than 150 ns. The values in [Table 1-3](#) are standard values, not the exact value calculated using [Equation 1](#).

Table 1-3. Recommended Component Values

V_{OUT} (V)	L (μH)	C_{OUT} (μF)	R2 (kΩ)	R3 (kΩ)	C8 (pF)
1.8	5.6	66	100	49.9	47
2.5	8.2	44	100	31.6	33
3.3	10	44	100	22.1	56
5	15	44	100	13.3	75
12	22	44	100	5.23	100

1.3.2 Output Capacitor and Feed-Forward Capacitor

Considering the loop stability and the effect of the internal parasitic parameters, choose a crossover frequency less than 40 kHz, without considering the feed-forward capacitor. A simple estimation for the crossover frequency without feed-forward capacitor C8 is shown in [Equation 2](#), assuming C_{OUT} has small ESR.

$$f_o = \frac{3.95}{V_{OUT} \times C_{OUT}} \quad (2)$$

Depending on V_{OUT} , if the output capacitor, C_{OUT} , is dominated by low-ESR (ceramic types) capacitors, a low phase margin could result. To improve the phase boost, an external feed-forward capacitor, C8, can be added in parallel with R2. C8 is chosen such that phase margin is boosted at the crossover frequency.

C8 is calculated in [Equation 3](#):

$$C8 = \frac{1}{2\pi f_o} \times \frac{1}{R_2} \quad (3)$$

For this design, C8 = 75 pF. C8 is not needed when C_{OUT} has high ESR, and C8 calculated from [Equation 3](#) should be reduced with medium ESR. Use [Table 1-3](#) as a starting point.

1.3.3 ENABLE

There is an internal 1-M Ω resistor from EN to GND thus EN can be floated to shut down the chip. To enable the chip, a pull-up resistor (range 200 k Ω to 1 M Ω , typical 510 k Ω) is connected between VIN and EN to limit the EN input current for light load efficiency improvement.

2 Test Setup and Results

This section describes how to properly connect, set up, and use the TPS54202HEVM-716 evaluation module. The section also includes test results typical for the evaluation module and covers efficiency, output voltage regulation, load transients, loop response, output ripple, input ripple, and start-up.

2.1 Input/Output Connections

The TPS54202HEVM-716 is provided with input/output connectors and test points as shown in [Table 2-1](#). A power supply capable of supplying 2 A must be connected to J1 through a pair of 20-AWG wires. The load must be connected to J2 through a pair of 20-AWG wires. The maximum load current capability must be at least 3 A to use the full capability of this EVM. Wire lengths must be minimized to reduce losses in the wires. Test-point TP1 provides a place to monitor the V_{IN} input voltages with TP2 providing a convenient ground reference. TP6 is used to monitor the output voltage with TP7 as the ground reference.

Table 2-1. EVM Connectors and Test Points

Reference Designator	Function
J1	VIN (see Table 1-1 for V_{IN} range)
J2	VOOUT, 5 V at 2 A maximum
JP1	2-pin header for enable. Connect EN to ground to disable, open to enable.
TP1	V_{IN} test point at VIN connector
TP2	GND test point at VIN
TP3	GND test point
TP4	SW test point
TP5	Test point between voltage divider network and output. Used for loop response measurements.
TP6	Output voltage test point at OUT connector
TP7	GND test point at VOOUT connector

2.2 Efficiency

The efficiency of this EVM peaks at a load current of about 0.5 A – 1 A, and then decreases as the load current increases towards full load. [Figure 2-1](#) shows the efficiency for the TPS54202HEVM-716 at an ambient temperature of 25°C.

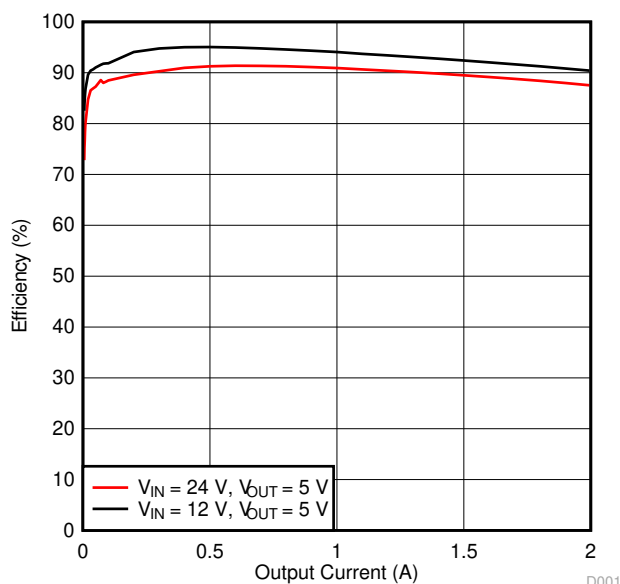


Figure 2-1. TPS54202HEVM-716 Efficiency

[Figure 2-2](#) shows the efficiency for the TPS54202HEVM-716 on a semi-log scale to better show light load efficiency. The ambient temperature is 25°C.

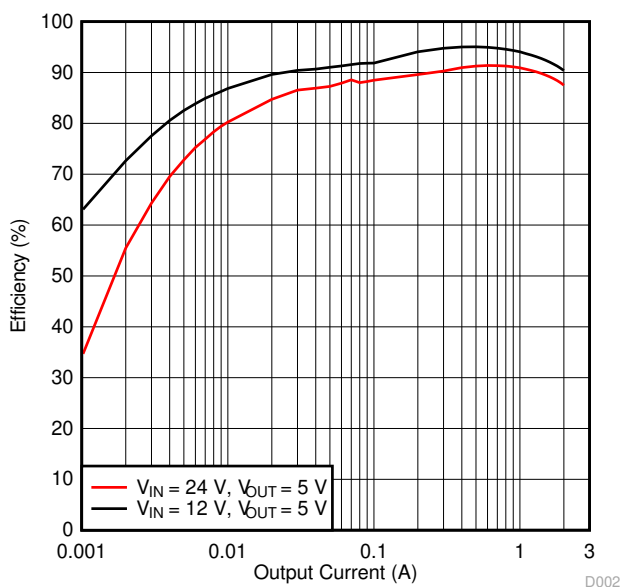


Figure 2-2. TPS54202HEVM-716 Low Current Efficiency

The efficiency may be lower at higher ambient temperatures, due to temperature variation in the drain-to-source resistance of the internal MOSFET.

2.3 Output Voltage Load Regulation

Figure 2-3 shows the load regulation for the TPS54202HEVM-716.

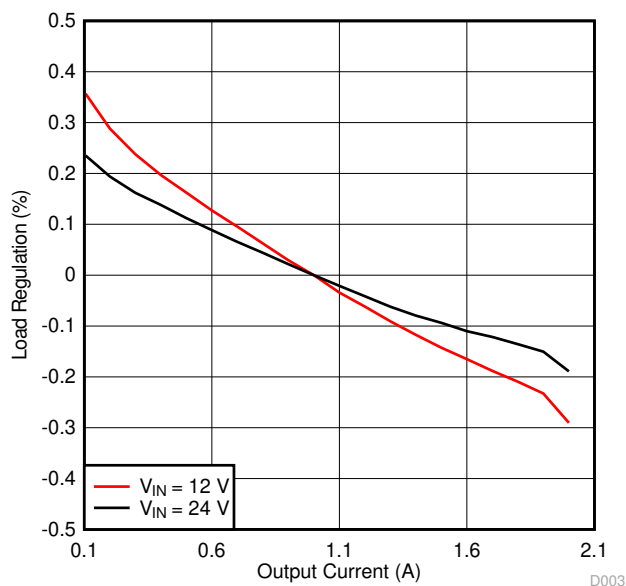


Figure 2-3. TPS54202HEVM-716 Load Regulation

Measurements are given for an ambient temperature of 25°C.

2.4 Output Voltage Line Regulation

Figure 2-4 shows the line regulation for the TPS54202HEVM-716.

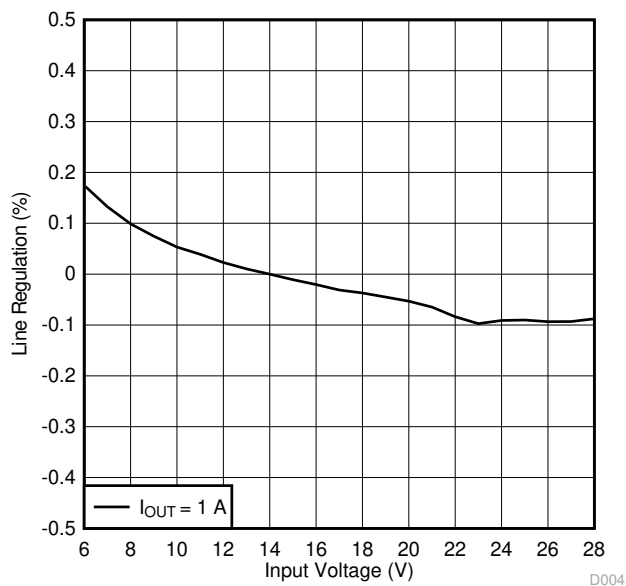


Figure 2-4. TPS54202HEVM-716 Line Regulation

2.5 Load Transients

Figure 2-5 shows the TPS54202HEVM-716 response to load transients. The current step is from 25% to 75% of maximum rated load at 24-V input. Total peak-to-peak voltage variation is as shown, including ripple and noise on the output.

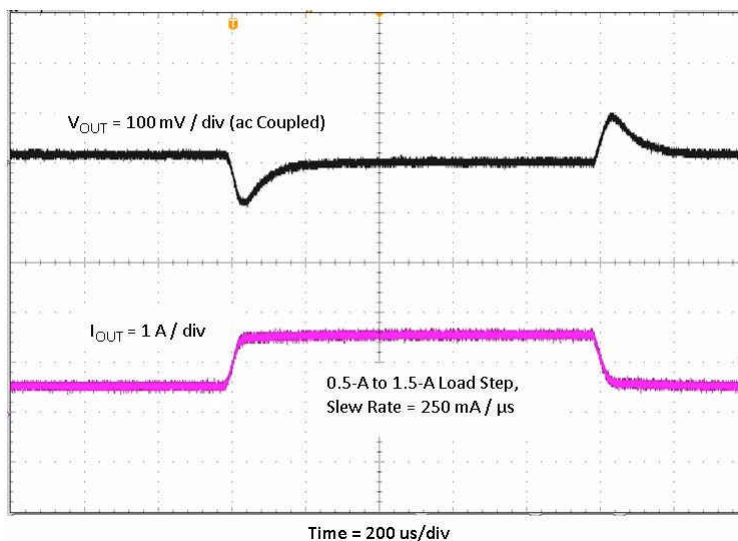


Figure 2-5. TPS54202HEVM-716 Transient Response

2.6 Output Voltage Ripple

Figure 2-6, Figure 2-7, Figure 2-8, and Figure 2-9 show the TPS54202HEVM-716 output voltage ripple for full-load, skip-mode, light-load and no-load operation. $V_{IN} = 24$ V. The output The ripple voltage is measured directly across the output capacitors.

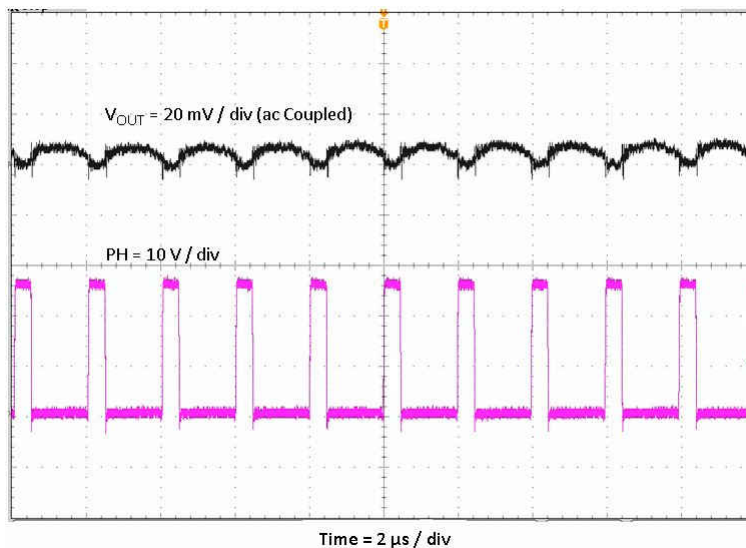


Figure 2-6. TPS54202HEVM-716 Output Ripple, $I_{OUT} = 2$ A

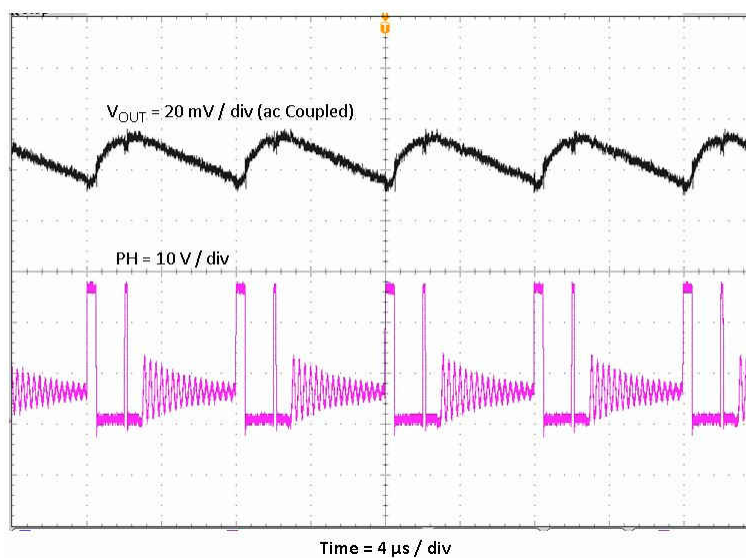


Figure 2-7. TPS54202HEVM-716 Output Ripple, $I_{OUT} = 100$ mA

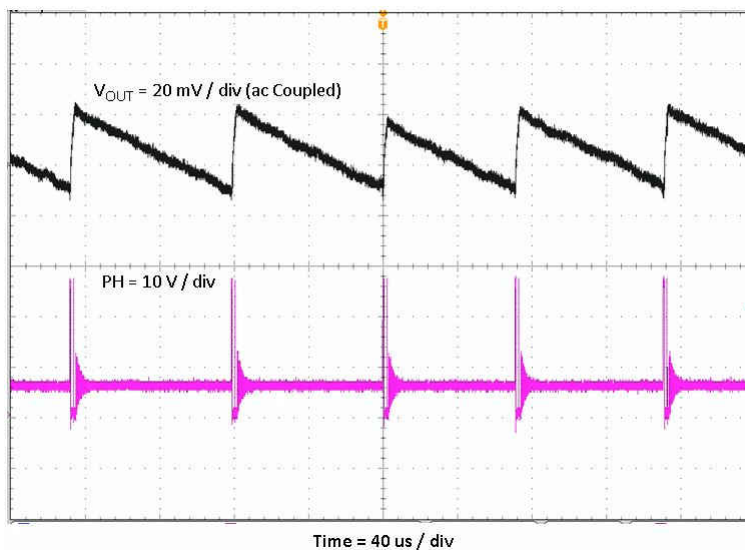


Figure 2-8. TPS54202HEVM-716 Output Ripple, $I_{OUT} = 10 \text{ mA}$

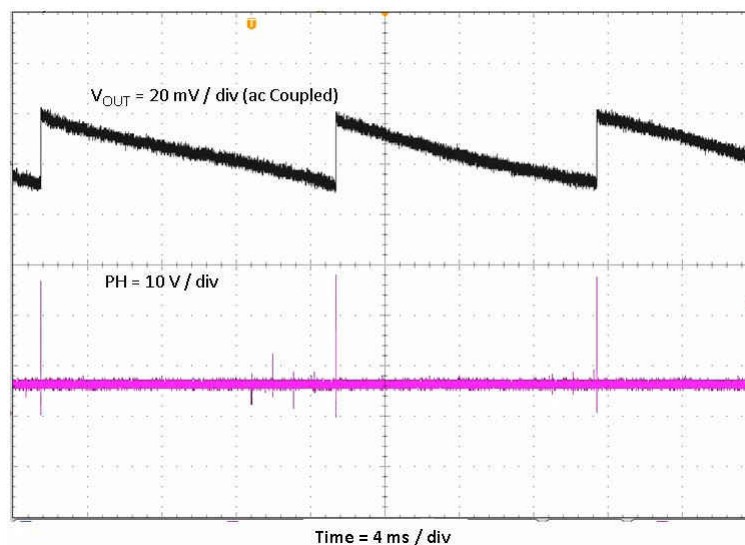


Figure 2-9. TPS54202HEVM-716 Output Ripple, $I_{OUT} = 0 \text{ A}$

2.7 Input Voltage Ripple

Figure 2-10 shows the TPS54202HEVM-716 input voltage ripple. The output current is the rated full load of 2 A and $V_{IN} = 24$ V. The ripple voltage is measured directly across the input capacitors.

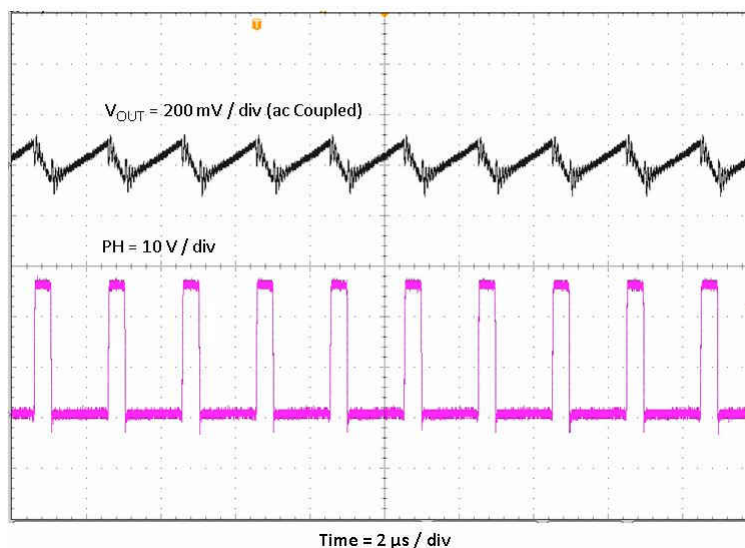


Figure 2-10. TPS54202HEVM-716 Input Ripple

2.8 Powering Up

Figure 2-11 and Figure 2-12 show the start-up waveforms for the TPS54202HEVM-716. In Figure 2-11, the output voltage ramps up as soon as the input voltage reaches the UVLO threshold as set by the R4 and R5 resistor divider network. In Figure 2-12, the input voltage is initially applied and the output is inhibited by using a 3.3-V logic signal between EN and GND. When the EN voltage reaches the enable-threshold voltage, the start-up sequence begins and the output voltage ramps up to the externally set value of 5 V. The input voltage for these plots is 24 V and the load is 5 Ω .

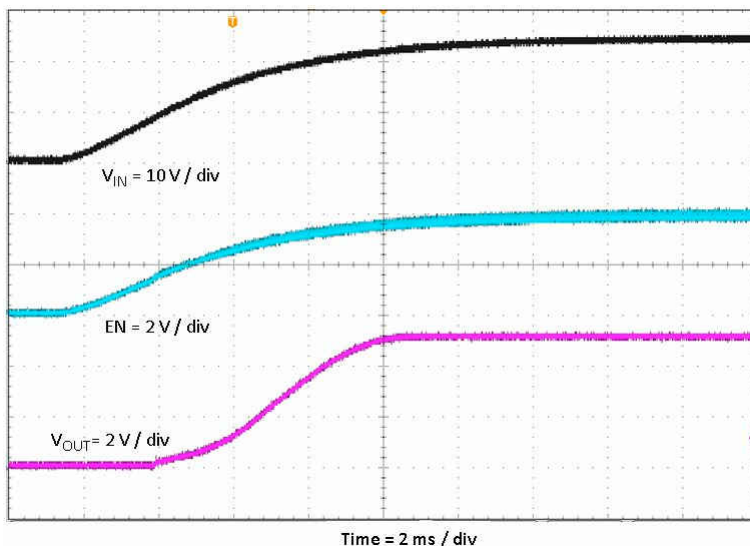


Figure 2-11. TPS54202HEVM-716 Startup Relative to V_{IN}

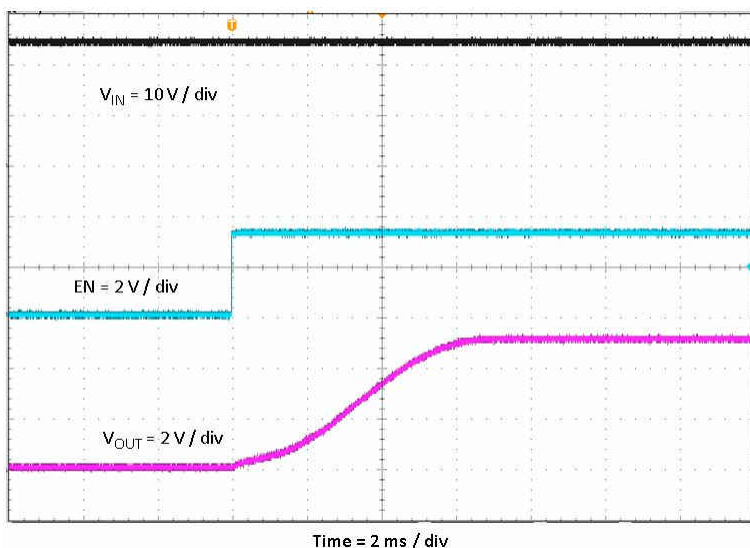


Figure 2-12. TPS54202HEVM-716 Startup Relative to Enable

2.9 Powering Down

Figure 2-13 and Figure 2-14 show the start-up waveforms for the TPS54202HEVM-716. In Figure 2-13, the output voltage ramps down as soon as the input voltage falls below the UVLO stop threshold as set by the R4 and R5 resistor divider network. In Figure 2-14, the output is inhibited by using a 3.3-V logic signal between EN and GND. The input voltage for these plots is 24 V and the load is 5 Ω .

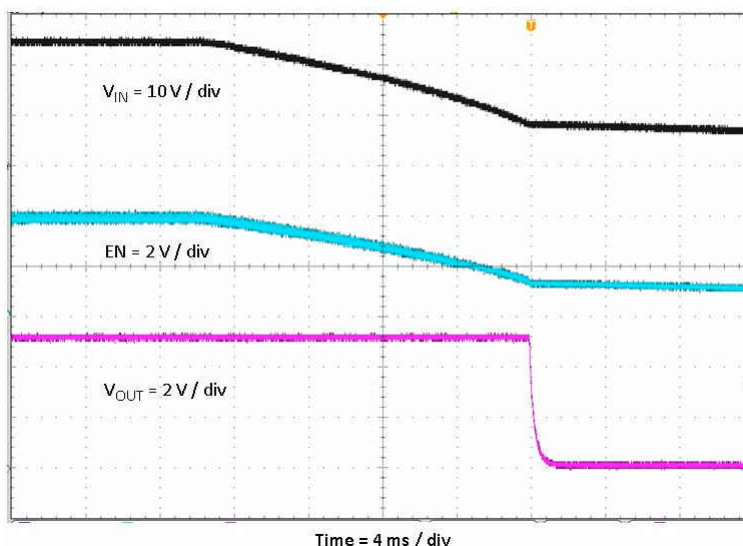


Figure 2-13. TPS54202HEVM-716 Shutdown Relative to V_{IN}

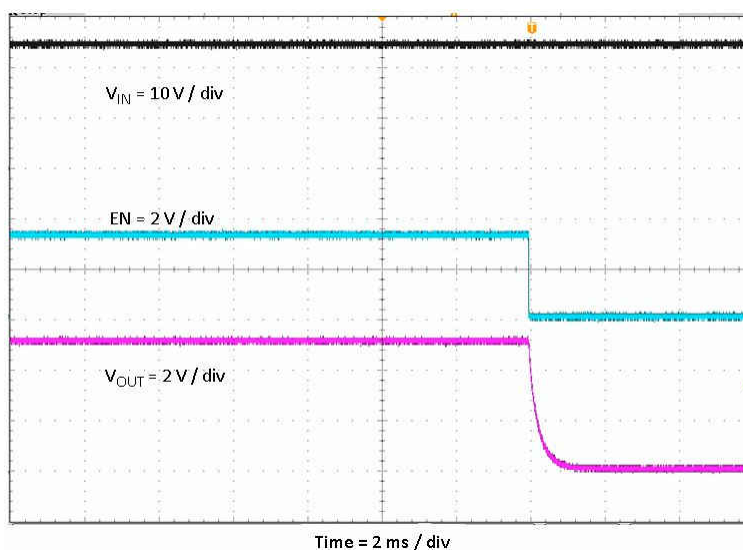


Figure 2-14. TPS54202HEVM-716 Shutdown Relative to EN

3 Board Layout

This section provides a description of the TPS54202HEVM-716, board layout, and layer illustrations.

3.1 Layout

Figure 3-1 and Figure 3-2 show the board layout for the TPS54202HEVM-716. The topside layer of the EVM is laid out in a manner typical of a user application. The top and bottom layers are 2-oz. copper.

The top layer contains the main power traces for V_{IN} , V_{OUT} , and SW. Also on the top layer are connections for the remaining pins of the TPS54202H and a large area filled with ground. To facilitate the placement of the main input bypass capacitor as close to the V_{IN} and GND pins as possible, the trace for SW is routed to the bottom layer immediately at the pin 3 connection. It is routed back to the top layer at the L1 inductor and C4 BOOT capacitor. The bottom layer contains a ground plane plus a copper fill area for SW, an etch run to connect the upper resistor of the voltage set point divider to the regulation point at the J2 output connector, and a trace to connect the upper resistor of the UVLO set point divider network to V_{IN} . The top-side ground areas are connected to the bottom and internal ground planes with multiple vias placed around the board to provide a thermal path from the top-side ground area to the bottom-side and internal ground planes.

The input decoupling capacitors (C2, and C1) and bootstrap capacitor (C4) are all located as close to the IC as possible. In addition, the voltage set-point resistor divider components are also kept close to the IC. For the TPS54202H, an additional input bulk capacitor may be required, depending on the EVM connection to the input supply.

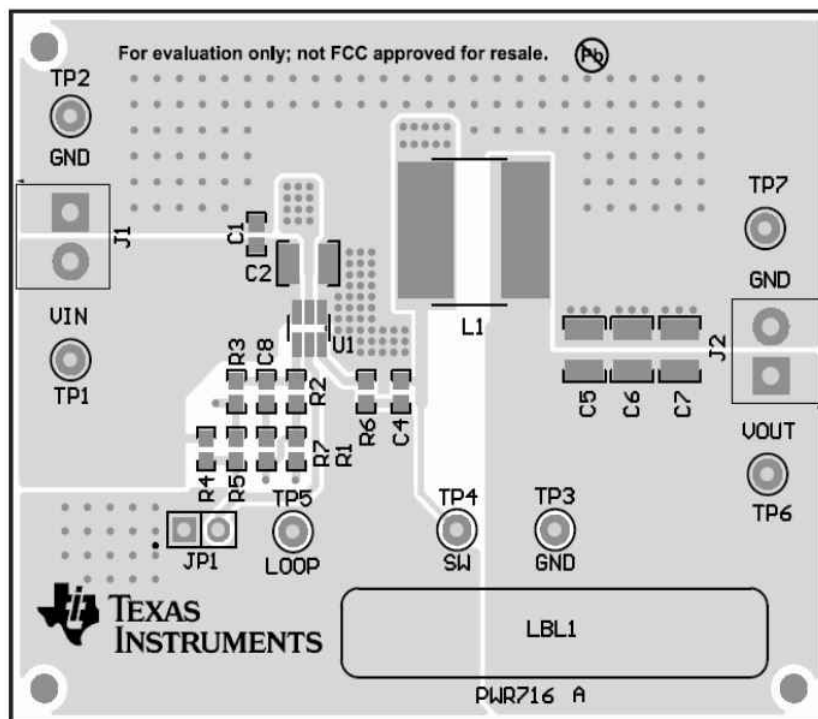


Figure 3-1. TPS54202HEVM-716 Top-Side Assembly

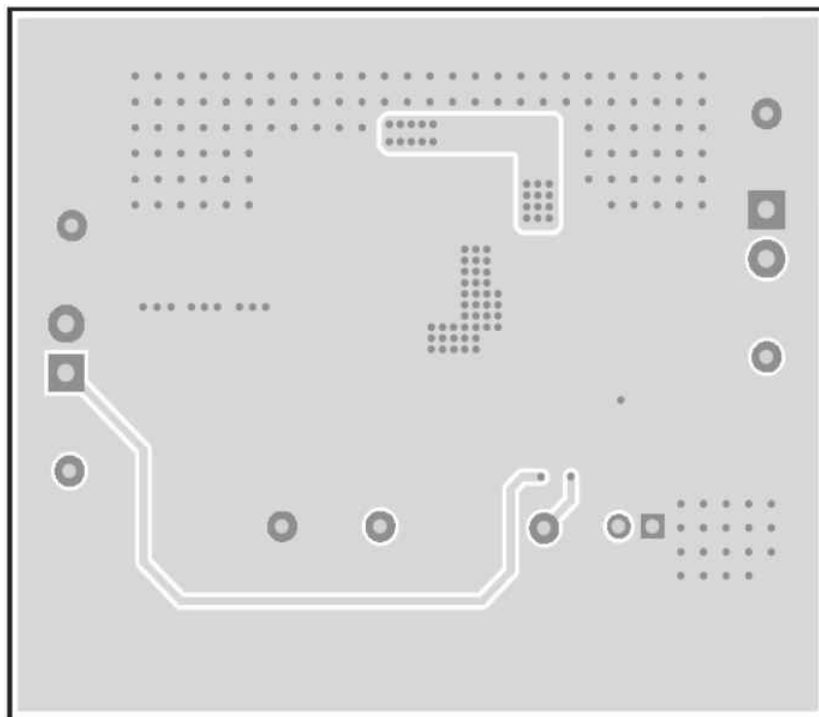


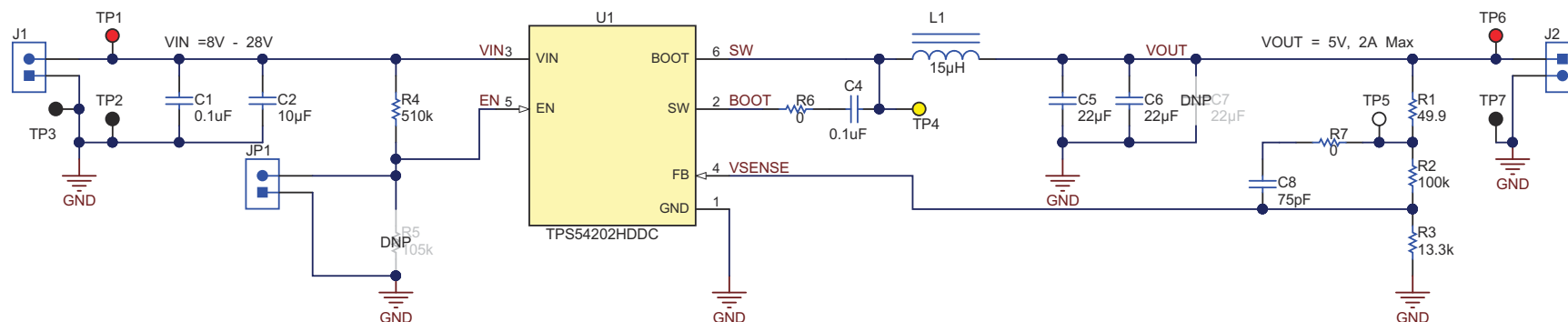
Figure 3-2. TPS54202HEVM-716 Bottom-Side Layout

4 Schematic and Bill of Materials

This section presents the TPS54202HEVM-716 schematic and bill of materials.

4.1 Schematic

Figure 4-1 is the schematic for the TPS54202HEVM-716.



Copyright © 2016, Texas Instruments Incorporated

Figure 4-1. TPS54202HEVM-716 Schematic

4.2 Bill of Materials

Table 4-1 presents the bill of materials for the TPS54202HEVM-716.

Table 4-1. TPS54202HEVM-716 Bill of Materials

Designator	Qty	Value	Description	Package Reference	Part Number	Manufacturer
C1, C4	2	0.1 µF	CAP, CERM, 0.1 µF, 25 V, ±10%, X5R, 0603	0603	GRM188R61E104KA01D	Murata
C2	1	10 µF	CAP, CERM, 10 µF, 35 V, ±10%, X7R, 1210	1210	GRM32ER7YA106KA12L	Murata
C5, C6	2	22 µF	CAP, CERM, 22 µF, 25 V, ±10%, X7R, 1210	1210	GRM32ER71E226KE15L	Murata
C8	1	75 pF	CAP, CERM, 75 pF, 50 V, ±5%, C0G/NP0, 0603	0603	GRM1885C1H750JA01D	Murata
J1, J2	2		Terminal Block, 6 A, 3.5 mm Pitch, 2-Pos, TH	7.0 × 8.2 × 6.5 mm	ED555/2DS	On-Shore Technology
JP1	1		Header, 100 mil, 2 × 1, Gold, TH	2 × 1 Header	TSW-102-07-G-S	Samtec
L1	1	15 µH	Inductor, Shielded Drum Core, Ferrite, 15 µH, 3.5 A, 0.036 Ω, SMD	10 × 5 × 10 mm	7447714150	Würth Elektronik
R1	1	49.9	RES, 49.9, 1%, 0.1 W, 0603	0603	CRCW060349R9FKEA	Vishay-Dale
R2	1	100 k	RES, 100 k, 1%, 0.1 W, 0603	0603	CRCW0603100KFKEA	Vishay-Dale
R3	1	13.3 k	RES, 13.3 k, 1%, 0.1 W, 0603	0603	CRCW060313K3FKEA	Vishay-Dale
R4	1	510 k	RES, 510 k, 5%, 0.1 W, 0603	0603	CRCW0603510KJNEA	Vishay-Dale
R6, R7	2	0	RES, 0 Ω, 5%, 0.1W, 0603	0603	ERJ-3GEY0R00V	Panasonic
TP1, TP6	2	Red	Test Point, Miniature, Red, TH	Red Miniature Testpoint	5000	Keystone

Table 4-1. TPS54202HEVM-716 Bill of Materials (continued)

Designator	Qty	Value	Description	Package Reference	Part Number	Manufacturer
TP2, TP3, TP7	3	Black	Test Point, Miniature, Black, TH	Black Miniature Testpoint	5001	Keystone
TP4	1	Yellow	Test Point, Miniature, Yellow, TH	Yellow Miniature Testpoint	5004	Keystone
TP5	1	White	Test Point, Miniature, White, TH	White Miniature Testpoint	5002	Keystone
U1	1		4.5-V TO 28-V INPUT, 2-A OUTPUT, EMI FRIENDLY SYNCHRONOUS STEP-DOWN CONVERTOR, DDC0006A	DDC0006A	TPS54202HDDC	Texas Instruments
C7	0	22 μ F	CAP, CERM, 22 μ F, 25 V, \pm 10%, X7R, 1210	1210	GRM32ER71E226KE15L	Murata
R5	0	105 k	RES, 105 k, 1%, 0.1 W, 0603	0603	CRCW0603105KFKEA	Vishay-Dale

5 Revision History

NOTE: Page numbers for previous revisions may differ from page numbers in the current version.

Changes from Revision * (April 2016) to Revision A (October 2021)	Page
• Updated the numbering format for tables, figures, and cross-references throughout the document.	2
• Updated the user's guide title.....	2

IMPORTANT NOTICE AND DISCLAIMER

TI PROVIDES TECHNICAL AND RELIABILITY DATA (INCLUDING DATASHEETS), DESIGN RESOURCES (INCLUDING REFERENCE DESIGNS), APPLICATION OR OTHER DESIGN ADVICE, WEB TOOLS, SAFETY INFORMATION, AND OTHER RESOURCES "AS IS" AND WITH ALL FAULTS, AND DISCLAIMS ALL WARRANTIES, EXPRESS AND IMPLIED, INCLUDING WITHOUT LIMITATION ANY IMPLIED WARRANTIES OF MERCHANTABILITY, FITNESS FOR A PARTICULAR PURPOSE OR NON-INFRINGEMENT OF THIRD PARTY INTELLECTUAL PROPERTY RIGHTS.

These resources are intended for skilled developers designing with TI products. You are solely responsible for (1) selecting the appropriate TI products for your application, (2) designing, validating and testing your application, and (3) ensuring your application meets applicable standards, and any other safety, security, regulatory or other requirements.

These resources are subject to change without notice. TI grants you permission to use these resources only for development of an application that uses the TI products described in the resource. Other reproduction and display of these resources is prohibited. No license is granted to any other TI intellectual property right or to any third party intellectual property right. TI disclaims responsibility for, and you fully indemnify TI and its representatives against any claims, damages, costs, losses, and liabilities arising out of your use of these resources.

TI's products are provided subject to [TI's Terms of Sale](#), [TI's General Quality Guidelines](#), or other applicable terms available either on [ti.com](#) or provided in conjunction with such TI products. TI's provision of these resources does not expand or otherwise alter TI's applicable warranties or warranty disclaimers for TI products. Unless TI explicitly designates a product as custom or customer-specified, TI products are standard, catalog, general purpose devices.

TI objects to and rejects any additional or different terms you may propose.

Copyright © 2026, Texas Instruments Incorporated

Last updated 10/2025