

Low Quiescent Current LDOs for Battery Connected Automotive Systems



Introduction

In modern cars, many systems are *always on* – such as anti-theft, key-less entry, emergency calling, tire pressure monitoring systems (TPMS), modules containing housekeeping microcontrollers (MCUs) and controller area network (CANs) and so on. The MCUs and/or CAN transceivers continuously monitor and communicate within various sub-systems in these applications. These loads often require a clean and noise free power supply with low ripple. LDOs are a preferred choice for providing the supply due to small size and simple design. The LDOs that power these *always on* loads are required to consume very low current at light load conditions to avoid draining the battery when the ignition is not engaged. The acceptable current consumption per module could be as low as tens of μA . Therefore, it is crucial that the LDO consumes very minimum current from the battery for increased battery life. An example of an LDO powering up an MCU in such systems is shown in Figure 1.

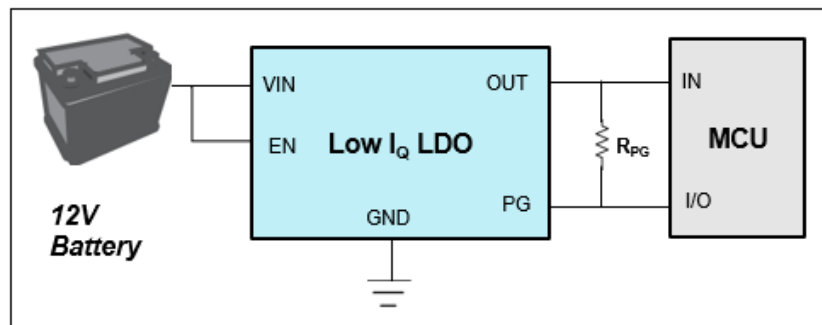


Figure 1. Low I_Q LDO Powering MCUs/CANs

Texas Instruments has a comprehensive portfolio for AEC-Q100 qualified, low quiescent current (I_Q) LDOs ($<3\mu\text{A}$ typical) which are preferred for powering *always-on* loads in standby systems and are designed to connect directly to the 12V automotive battery. Table 1 lists the latest low I_Q devices with current rating, features, and package options highlighted.



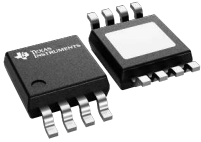
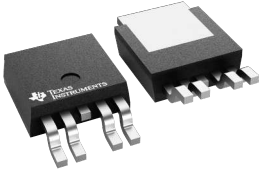
Table 1. Automotive Battery-Connected Low Quiescent Current (I_Q) LDOs

Generic Part Number	Output Current (mA)	Adjustable Output Voltage	Fixed Output Voltage Range	Power Good with Delay	Packages
TPS7E81-Q1	150	Yes	1.8V – 12V	No	SOT-23, WSON, HVSSOP
TPS7E82-Q1	300	Yes	1.8V – 12V	No	SOT-23, WSON, HVSSOP
TPS7E66-Q1	150	Yes	1.8V – 12V	Yes	WSON, HVSSOP
TPS7E67-Q1	300	Yes	1.8V – 12V	Yes	WSON, HVSSOP
TPS7B82-Q1	300	No	2.5V - 5V	No	HTSSOP, WSON, HVSSOP, TO-252

What are the package options for Low I_Q LDOs?

TI offers various package and pinout options for the automotive battery-connected low I_Q LDOs which allows for greater flexibility in the device selection for thermally sensitive applications. The description and value proposition of each of the packages are listed in [Table 2](#).

Table 2. Package Options for Battery-Connected Low I_Q LDOs

Package (Pins)	WSON (6)	SOT-23 (5)	HVSSOP (8)	TO-252 (5)
Size (mm) (l × w)	2 × 2	2.9 × 2.8	3 × 4.9	10.1 × 6.6
Thermal Range (Rtheta JA°C/W)	70-90	180-190	60-65	35-39
Value Proposition	Smallest size	Industry standard	Good thermals	Preferred thermals
				

How to select the right Low I_Q LDO?

The selection of the device primarily depends on the output current, input/output voltage ratings, feature requirements, package and pinout preference.

[Table 3](#) highlights the various features of the automotive battery-connected low I_Q LDOs.

Table 3. Device Comparison: Automotive Battery-Connected Low I_Q LDOs

Devices and Features	TPS7E81-Q1 TPS7E82-Q1	TPS7E66-Q1 TPS7E67-Q1	TPS7B82-Q1
Wider Output Voltage Range (18V and above)	✓	✓	
Better Accuracy (< 1.5%)	✓	✓	
Power Good with Programmable Delay		✓	
Thermals (Rtheta JA~30-40°C/W)			✓
Extended Junction Temperature (Grade 0)			✓

What are the feature sets provided by Low I_Q LDOs?

Adjustable Feedback Voltage

TPS7E81-Q1, TPS7E82-Q1, TPS7E66-Q1 and TPS7E67-Q1 offer an adjustable version which can be used to achieve output voltages up to 38V. The adjustable version requires external feedback divider resistors, R1 and R2, to set the output voltage (V_{OUT}).

V_{OUT} can be calculated using equation 1 and the schematic is shown in Figure 2 .

For the adjustable-voltage version device, a feed-forward capacitor (C_{FF}) can be connected from the OUT pin to the FB pin. C_{FF} improves transient, noise, and PSRR performance, but is not required for regulator stability (shown in dotted line in Figure 2).

$$V_{OUT} = V_{ADJ} \times \left(1 + \frac{R_1}{R_2} \right) \quad (1)$$

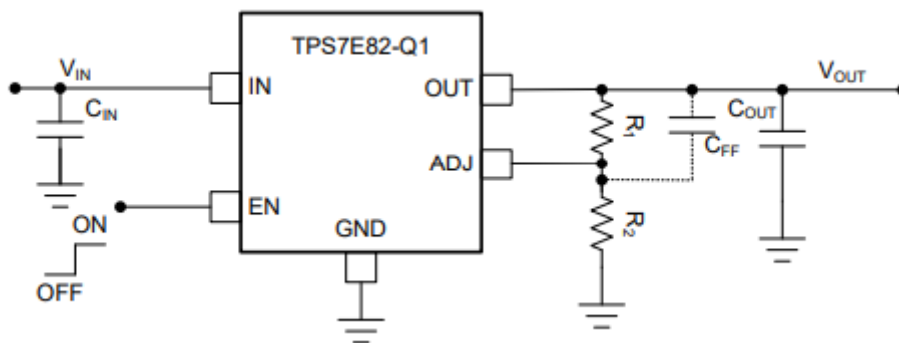


Figure 2. Using Feedback Resistors to Set the Output Voltage

Power Good and Delay

TPS7E66-Q1 and TPS7E67-Q1 have integrated Power Good (PG) feature for monitoring the output voltage. By connecting a pull-up resistor to the LDO output, any downstream device can receive PG as a logic signal that can be used for either power sequencing or resetting the microcontroller.

The HVSSOP package for both TPS7E66-Q1 and TPS7E67-Q1 offers an additional PG delay functionality where the PG reset delay can be adjusted by using external capacitors. This enables the user to control the power-on reset (POR) delay or the PG response time, ensuring the LDO stabilizes before downstream devices are fully active, preventing false resets from brief power supply glitches. Figure 3 shows a typical timing diagram for the power-good delay pin. See the respective datasheets for more details.

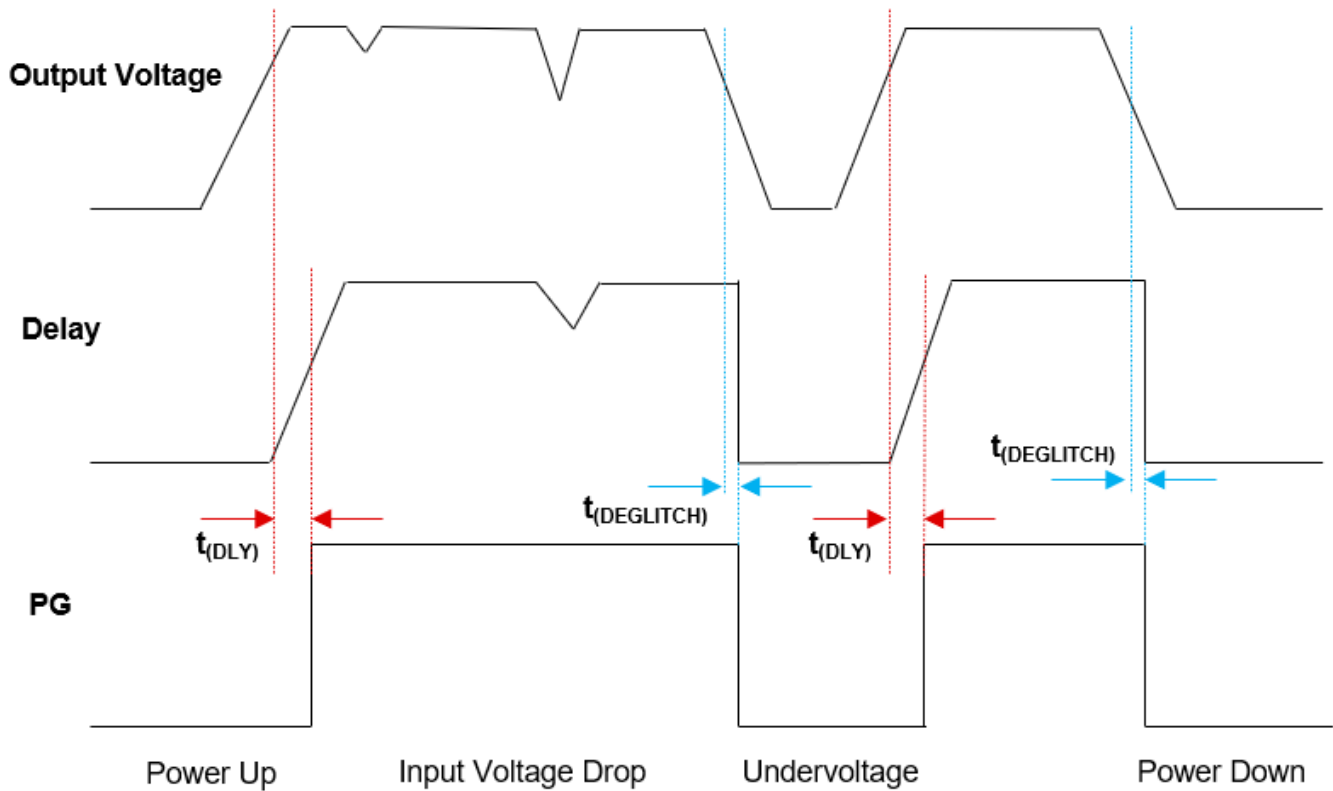


Figure 3. Typical Power-Good Timing Diagram

Output Voltage Dropout Recovery

Dropout recovery refers to the response of the output voltage after exiting dropout operation. For most LDOs in dropout, the output voltage tracks the input voltage for a finite amount of time as the input voltage rises and exits the dropout region. This can lead to overshoot of the output voltage which can damage the downstream load. A poor dropout recovery behavior for LDO is shown in Figure 4 (at slew rate $2\text{V}/\mu\text{s}$, 100mA load).

The drop out recovery becomes more critical in automotive applications during cold crank conditions when the battery voltage falls below than the nominal output voltage of the LDO, putting the voltage into dropout.

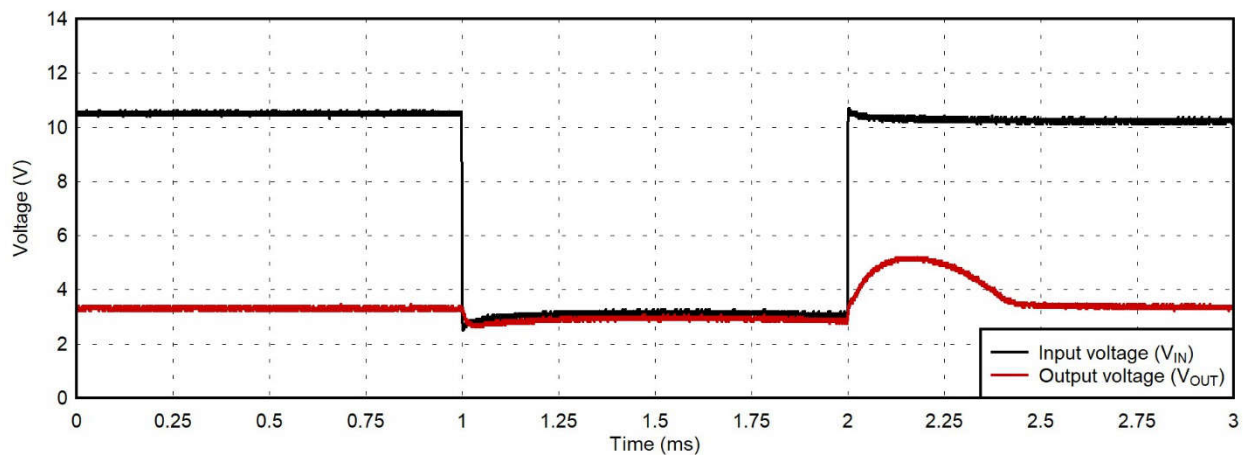


Figure 4. Poor V_{OUT} Recovery During Drop Out Conditions ($V_{IN} = 10.5\text{V}$, $2\text{V}/\mu\text{s}$)

TPS7E81-Q1, TPS7E82-Q1, TPS7E66-Q1 and TPS7E67-Q1 have a unique architecture in which the output voltage stabilizes to the desired value after exiting the drop out operation with minimal overshoot.

Figure 5 shows a typical behavior of the output voltage (V_{OUT}) when the falling input voltage (V_{IN}) puts the LDO into dropout before recovering (at slew rate $2V/\mu s$, 100mA load). The amount of overshoot is only a few mV in this case.

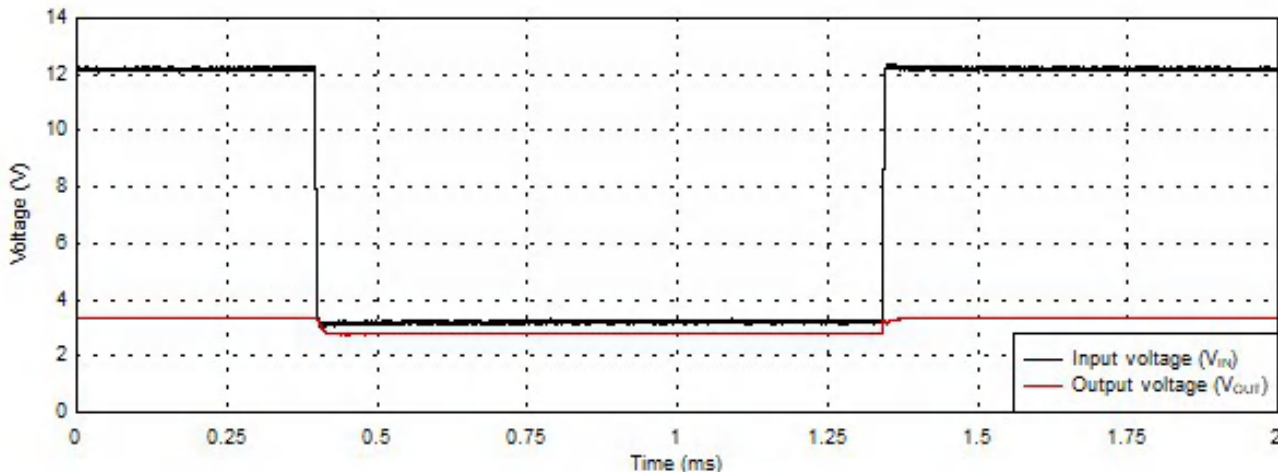


Figure 5. Controlled V_{OUT} Recovery During Drop Out Conditions ($V_{IN} = 12V, 2V/\mu s$)

TI offers a very comprehensive and robust portfolio for AEC-Q100 qualified, battery connected Low I_Q LDOs. The various package and pin out options allow for greater flexibility in device selection. Table 4 summarizes the latest devices in this family.

Table 4. Automotive Battery-Connected Low Quiescent Current (I_Q) LDOs

Generic Part Number	Output Current (mA)	Adjustable Output Voltage	Fixed Output Voltage Range	Power Good	Packages	Thermals $R_{\theta JA}$ ($^{\circ}C/W$)
TPS7E81-Q1	150	Yes (1.2V – 38V)	1.8V – 12V	No	SOT-23-5	190.2
TPS7E82-Q1	300				WSON-6	90.2
					HVSSOP-8	60.2
TPS7E66-Q1	150			Yes (Delay feature in HVSSOP-8 package)	WSON-6	90.2
		HVSSOP-8	60.2			
TPS7E67-Q1	300	WSON-6	90.2			
			HVSSOP-8	60.2		
TPS7B82-Q1	300	No	2.5V – 5V	No	WSON-6	72.8
					HVSSOP-8	63.9
					TO-252-5	38.8
					HTSSOP-14	52

Learn more

- Watch the video [LDO Basics: Quiescent Current](#)
- [LDO Basics: Introduction to Quiescent Current](#)
- [Understanding the Foundations of Quiescent Current in Linear Power Systems](#)
- [Pros and Cons of Using a Feedforward Capacitor with a Low-Dropout Regulator](#)

Evaluate the Design

- TPS7E81/2-Q1: [TPS7E8XQ1EVM-198](#)
- TPS7E66/7-Q1: [TPS7E6XQ1EVM-199](#)
- TPS7B82-Q1: [TPS7B8250EVM](#)
- Leverage existing [simulation models available in PSpice for TI](#)

For additional assistance, ask questions to TI engineers on the [TI E2E™ Power Management Support](#) forum.

Trademarks

All trademarks are the property of their respective owners.

IMPORTANT NOTICE AND DISCLAIMER

TI PROVIDES TECHNICAL AND RELIABILITY DATA (INCLUDING DATASHEETS), DESIGN RESOURCES (INCLUDING REFERENCE DESIGNS), APPLICATION OR OTHER DESIGN ADVICE, WEB TOOLS, SAFETY INFORMATION, AND OTHER RESOURCES "AS IS" AND WITH ALL FAULTS, AND DISCLAIMS ALL WARRANTIES, EXPRESS AND IMPLIED, INCLUDING WITHOUT LIMITATION ANY IMPLIED WARRANTIES OF MERCHANTABILITY, FITNESS FOR A PARTICULAR PURPOSE OR NON-INFRINGEMENT OF THIRD PARTY INTELLECTUAL PROPERTY RIGHTS.

These resources are intended for skilled developers designing with TI products. You are solely responsible for (1) selecting the appropriate TI products for your application, (2) designing, validating and testing your application, and (3) ensuring your application meets applicable standards, and any other safety, security, regulatory or other requirements.

These resources are subject to change without notice. TI grants you permission to use these resources only for development of an application that uses the TI products described in the resource. Other reproduction and display of these resources is prohibited. No license is granted to any other TI intellectual property right or to any third party intellectual property right. TI disclaims responsibility for, and you fully indemnify TI and its representatives against any claims, damages, costs, losses, and liabilities arising out of your use of these resources.

TI's products are provided subject to [TI's Terms of Sale](#), [TI's General Quality Guidelines](#), or other applicable terms available either on ti.com or provided in conjunction with such TI products. TI's provision of these resources does not expand or otherwise alter TI's applicable warranties or warranty disclaimers for TI products. Unless TI explicitly designates a product as custom or customer-specified, TI products are standard, catalog, general purpose devices.

TI objects to and rejects any additional or different terms you may propose.

Copyright © 2026, Texas Instruments Incorporated

Last updated 10/2025