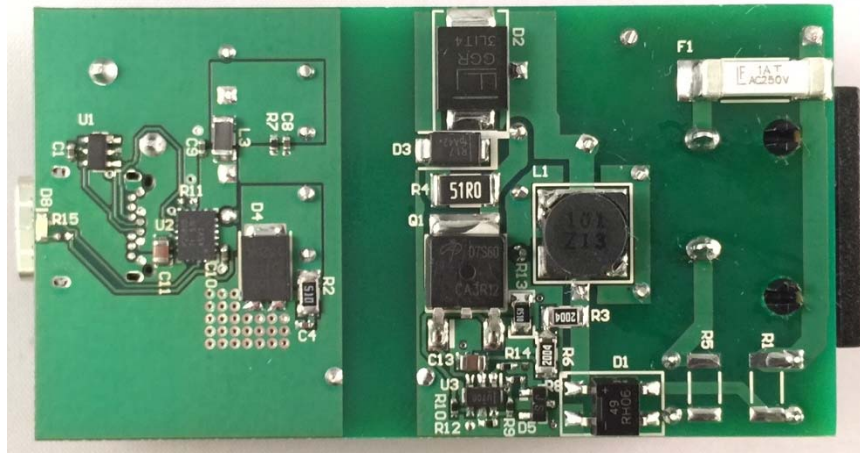
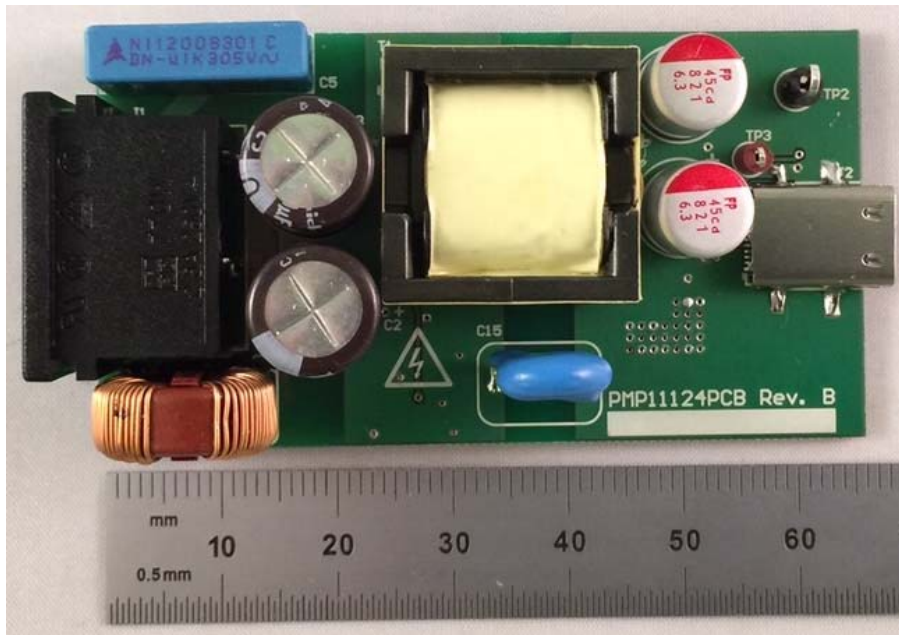


1 Photos

The photographs below show the PMP11124 Rev B prototype assembly.



2 Standby Power

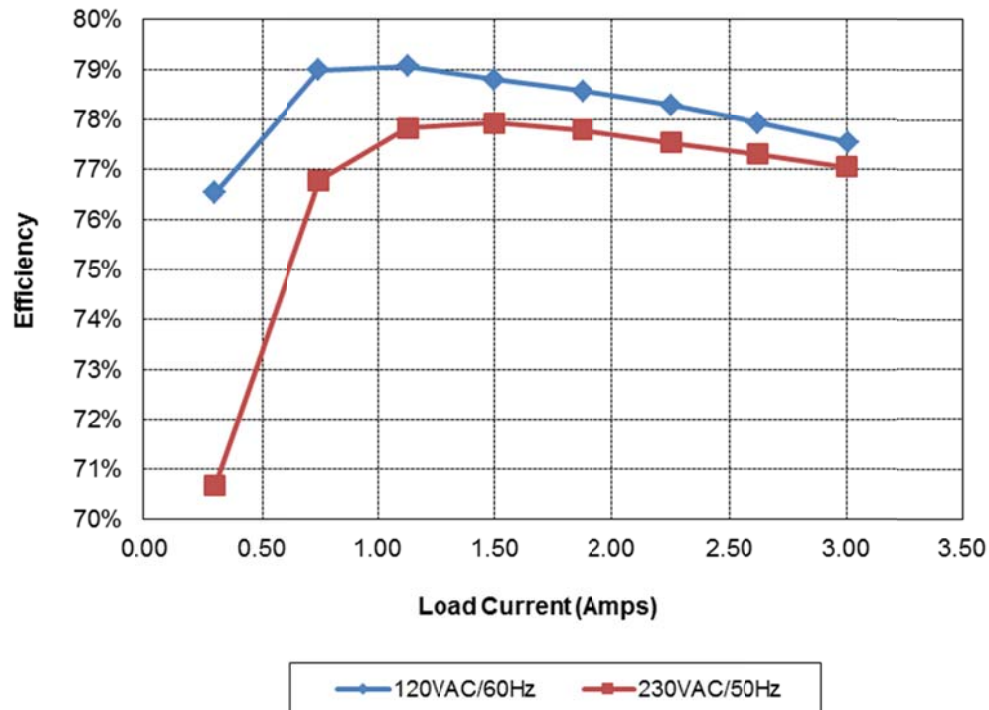
Measured with cable unplugged

No Load	Pin AC (W)
120VAC/60Hz	0.037
230VAC/50Hz	0.065

3 Efficiency

3.1 Total Efficiency

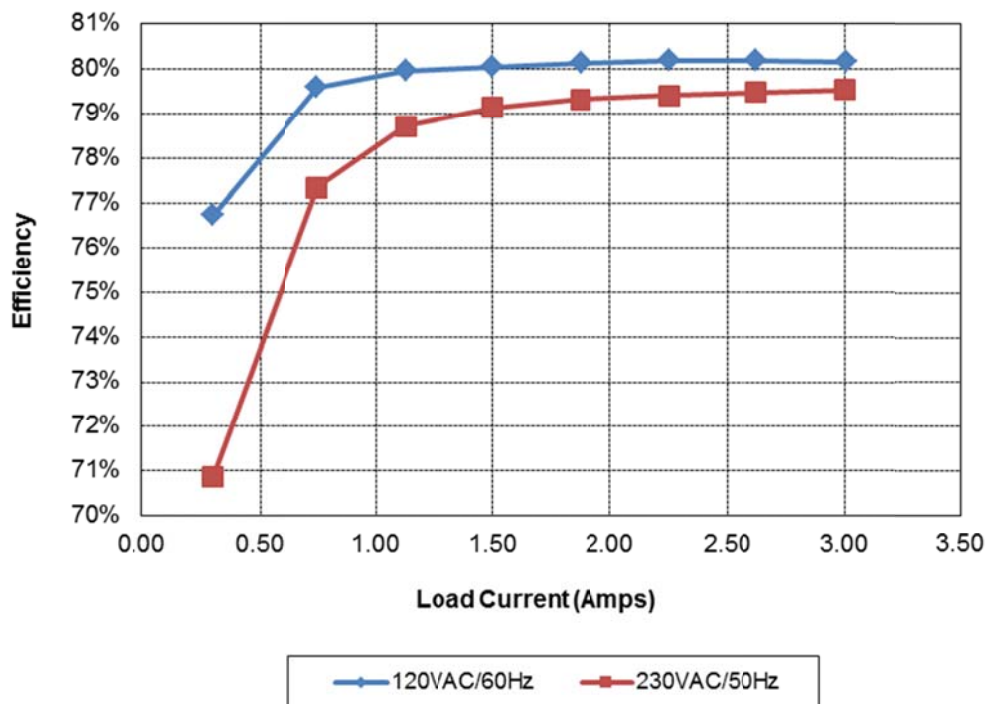
The efficiency measurements below were measured from the AC input to TP3/TP2.



Vin	Pin	Vout	Iout	Load	Efficiency	Avg. Eff.
120VAC/60Hz	2.03	5.18	0.300	10%	76.54%	
	4.90	5.17	0.749	25%	78.99%	78.41%
	9.81	5.15	1.500	50%	78.81%	
	14.77	5.14	2.250	75%	78.29%	
	19.88	5.13	3.005	100%	77.54%	
230VAC/50Hz	2.20	5.18	0.300	10%	70.68%	
	5.05	5.17	0.750	25%	76.78%	77.32%
	9.93	5.16	1.500	50%	77.92%	
	14.93	5.15	2.250	75%	77.54%	
	19.99	5.13	3.001	100%	77.04%	

3.2 AC/DC Only Efficiency

The efficiency measurements below were measured from the AC input to C7 (before TPS25810 load switch).



Vin	Pin	Vout	Iout	Load	Efficiency	Avg. Eff.
120VAC/60Hz	2.03	5.20	0.300	10%	76.73%	
	4.90	5.21	0.749	25%	79.59%	80.01%
	9.81	5.24	1.500	50%	80.06%	
	14.77	5.27	2.250	75%	80.20%	
	19.88	5.30	3.005	100%	80.17%	
230VAC/50Hz	2.20	5.20	0.300	10%	70.87%	
	5.05	5.21	0.750	25%	77.35%	78.86%
	9.93	5.24	1.500	50%	79.13%	
	14.93	5.27	2.250	75%	79.41%	
	19.99	5.30	3.001	100%	79.54%	

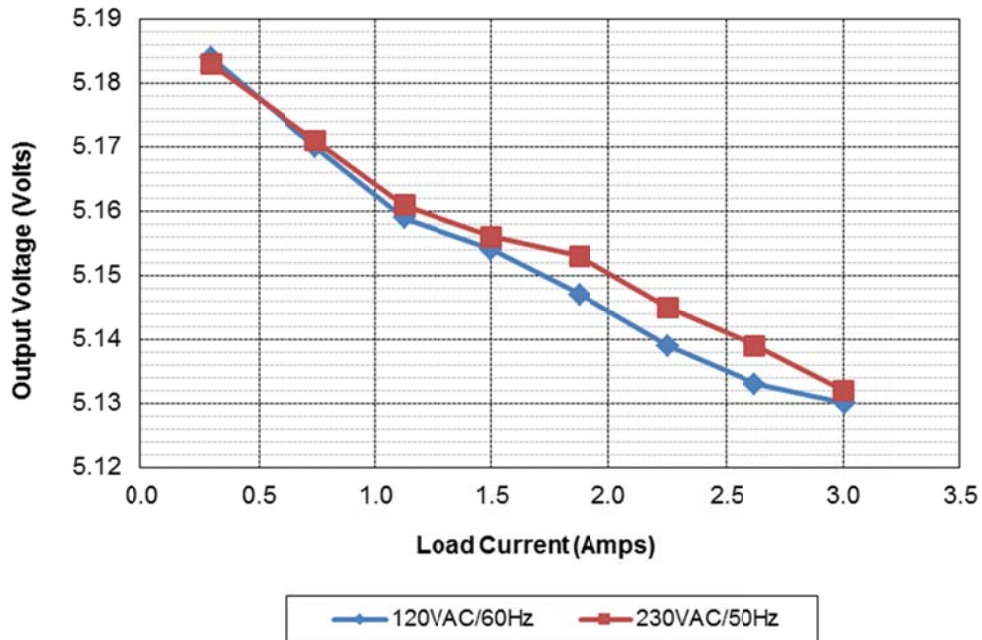
3.3 Raw Efficiency Data

Iout	Vout AC/DC	Vout USB-C	Vin	Iin	Pin	PF	Pout AC/DC	Pout USB-C	Losses	Efficiency AC/DC	Efficiency USBC
0.000	5.230		120.0	0.00487	0.0372		0.00	0.00	0.04	0.0%	0.0%
0.300	5.197	5.184	120.0	0.0500	2.032	0.339	1.56	1.56	0.47	76.7%	76.5%
0.749	5.209	5.170	119.9	0.100	4.902	0.408	3.90	3.87	1.00	79.6%	79.0%
1.125	5.218	5.159	119.9	0.138	7.340	0.445	5.87	5.80	1.47	80.0%	79.1%
1.500	5.236	5.154	119.9	0.173	9.810	0.473	7.85	7.73	1.96	80.1%	78.8%
1.876	5.250	5.147	119.9	0.207	12.29	0.496	9.85	9.66	2.44	80.1%	78.6%
2.250	5.265	5.139	119.9	0.239	14.77	0.514	11.85	11.56	2.92	80.2%	78.3%
2.625	5.282	5.133	119.9	0.272	17.29	0.530	13.87	13.47	3.42	80.2%	77.9%
3.005	5.304	5.130	119.9	0.305	19.88	0.544	15.94	15.42	3.94	80.2%	77.5%

Iout	Vout AC/DC	Vout USB-C	Vin	Iin	Pin	PF	Pout AC/DC	Pout USB-C	Losses	Efficiency AC/DC	Efficiency USBC
0.000	5.662		230.0	0.00750	0.0652		0.00	0.00	0.07	0.0%	0.0%
0.300	5.197	5.183	230.0	0.0366	2.200	0.261	1.56	1.55	0.64	70.9%	70.7%
0.750	5.209	5.171	230.0	0.072	5.051	0.307	3.91	3.88	1.14	77.3%	76.8%
1.125	5.220	5.161	230.0	0.096	7.460	0.338	5.87	5.81	1.59	78.7%	77.8%
1.500	5.236	5.156	230.0	0.119	9.925	0.361	7.85	7.73	2.07	79.1%	77.9%
1.875	5.254	5.153	230.0	0.142	12.42	0.381	9.85	9.66	2.57	79.3%	77.8%
2.250	5.269	5.145	230.0	0.163	14.93	0.398	11.86	11.58	3.07	79.4%	77.5%
2.625	5.284	5.139	230.0	0.184	17.45	0.530	13.87	13.49	3.58	79.5%	77.3%
3.001	5.298	5.132	230.0	0.203	19.99	0.427	15.90	15.40	4.09	79.5%	77.0%

4 Regulation

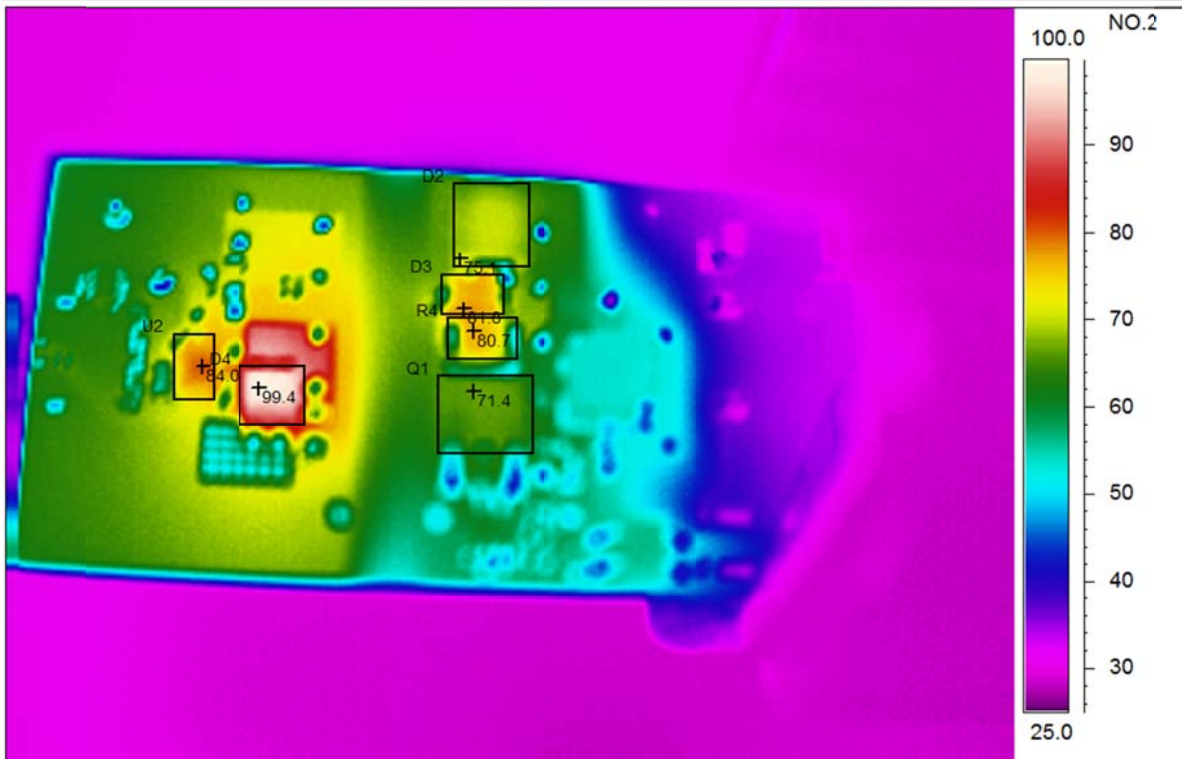
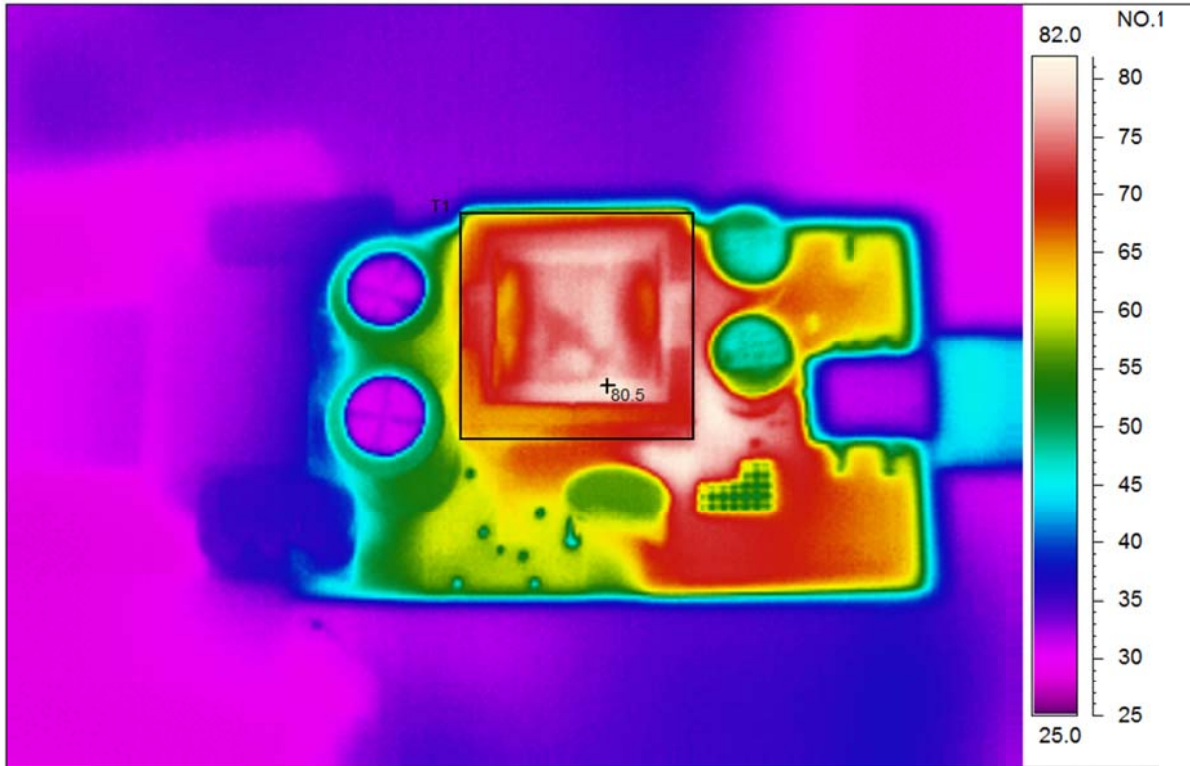
Measured at TP3/TP2.



5 Thermal Images

The thermal images below show the output loaded with 3A. The ambient temperature was 25°C.

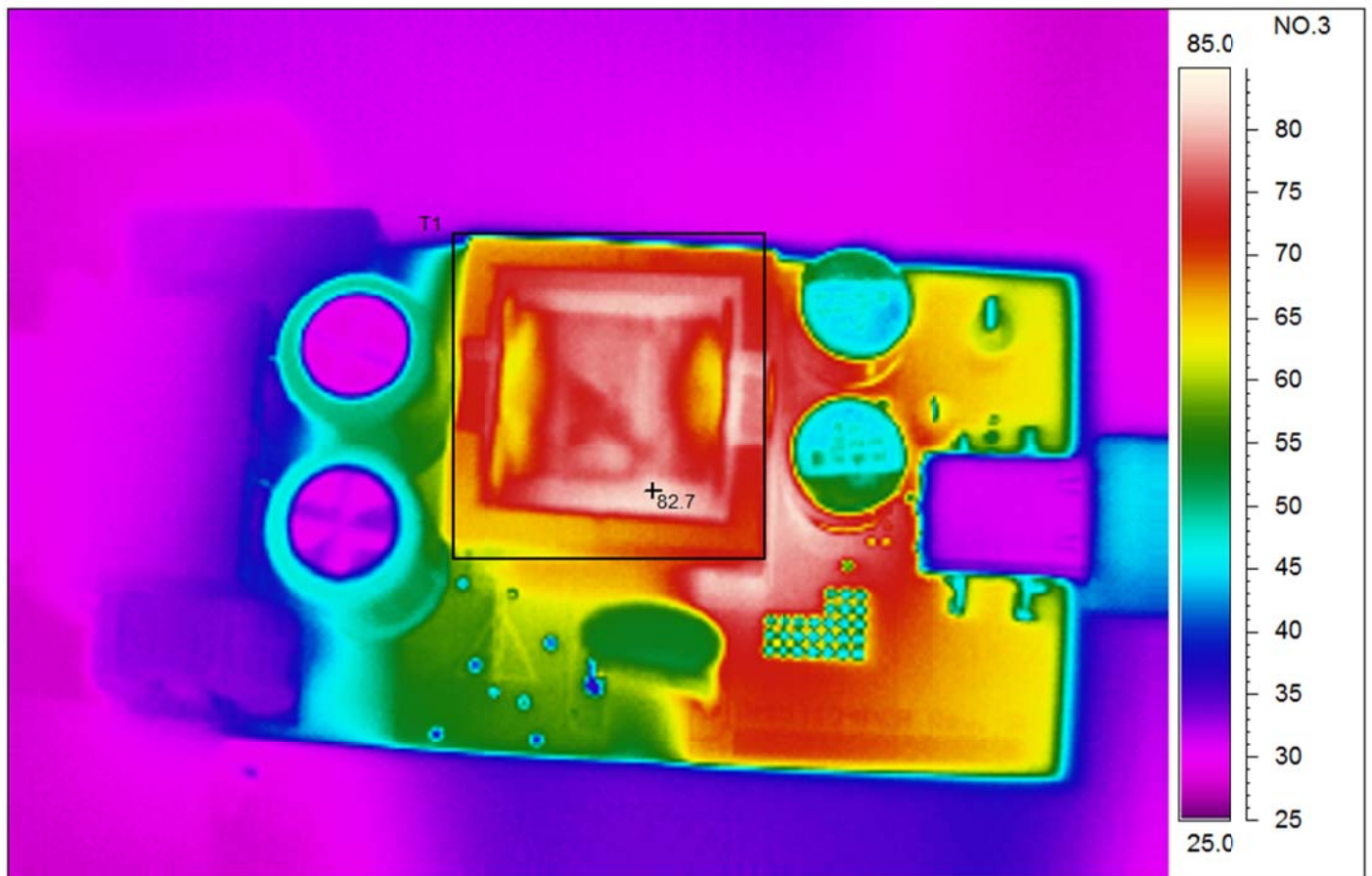
5.1 120VAC/60Hz

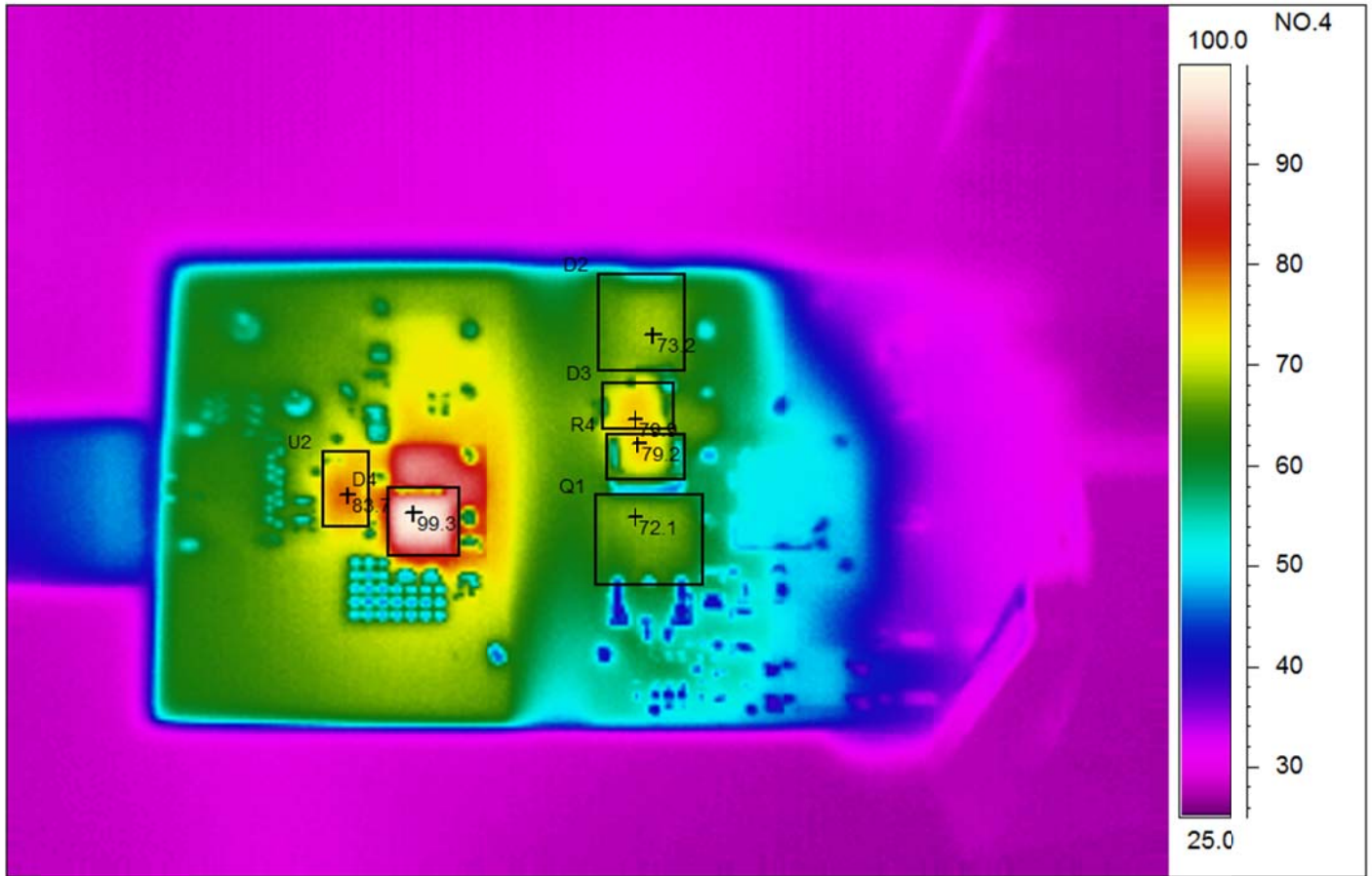


Area analysis	Value
T1 Max	80.5°C

Area analysis	Value
U2Max	84.0°C
D4Max	99.4°C
Q1Max	71.4°C
R4Max	80.7°C
D3Max	81.8°C
D2 Max	75.1°C

5.2 230VAC/50Hz



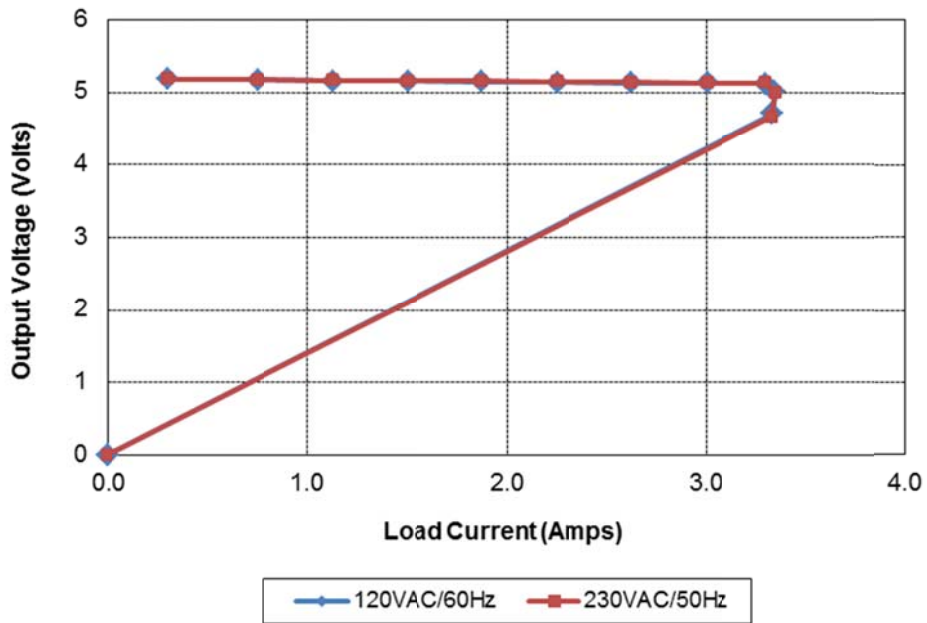


Area analysis	Value	NO.3
T1 Max	82.7°C	

Area analysis	Value	NO.4
U2Max	83.7°C	
D4Max	99.3°C	
Q1Max	72.1°C	
R4Max	79.2°C	
D3Max	79.9°C	
D2 Max	73.2°C	

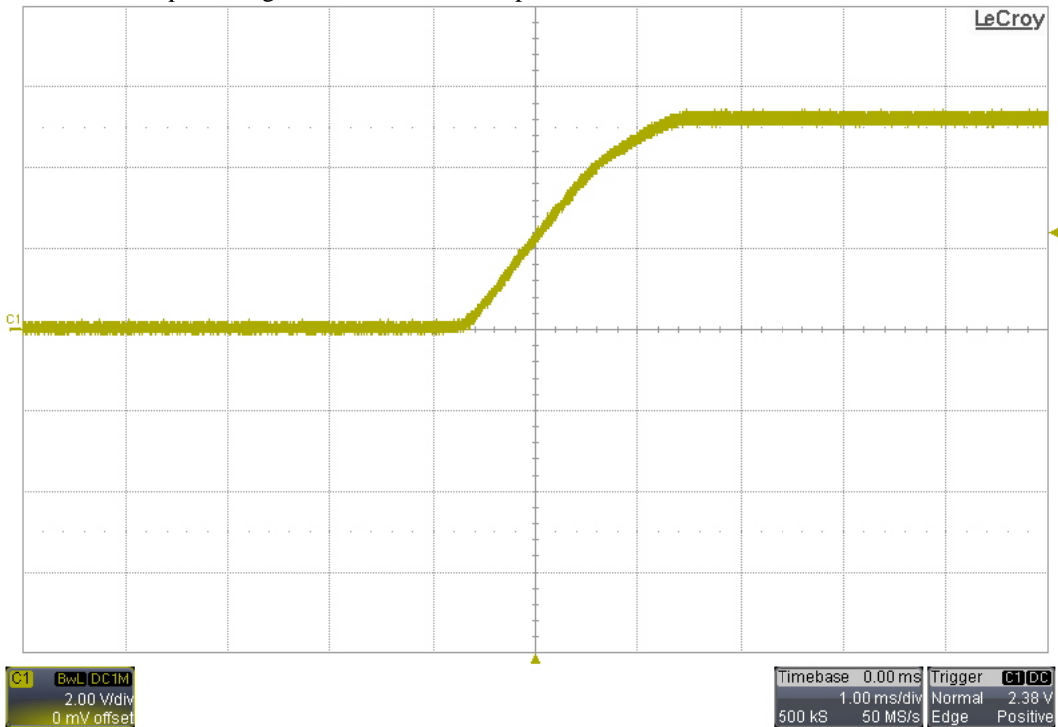
6 Current Limit

The plot below shows the output voltage on TP3/TP2 versus output current as the load is increased into current limit.



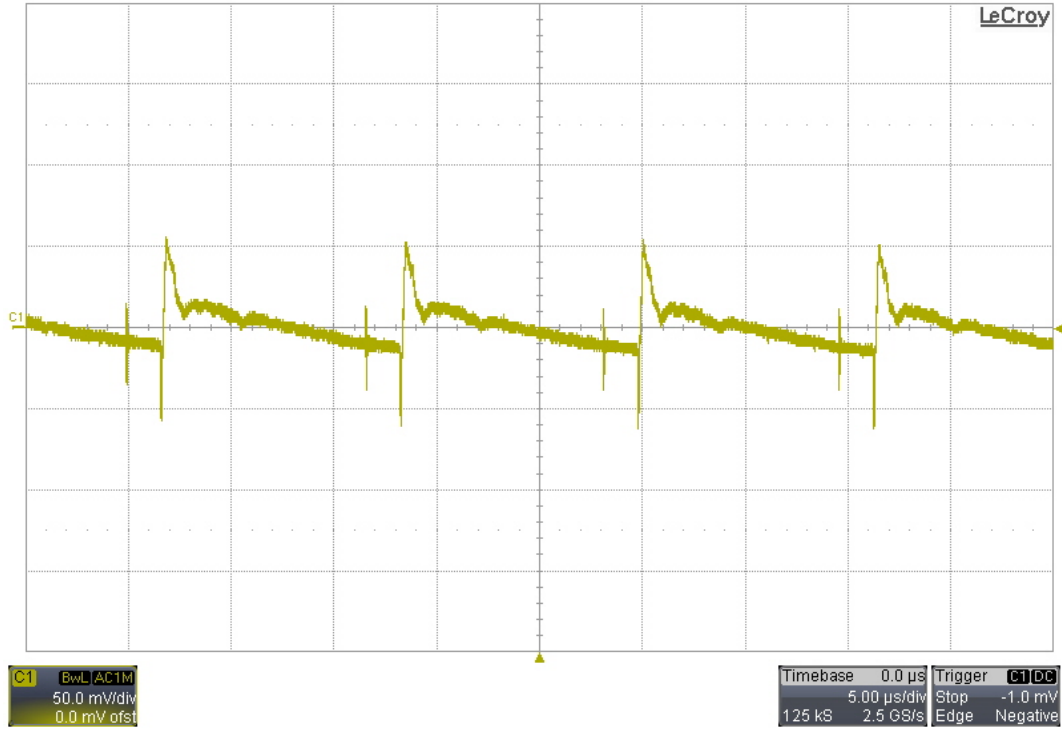
7 Startup

The image below shows the output voltage on TP3/TP2 at startup with no load.

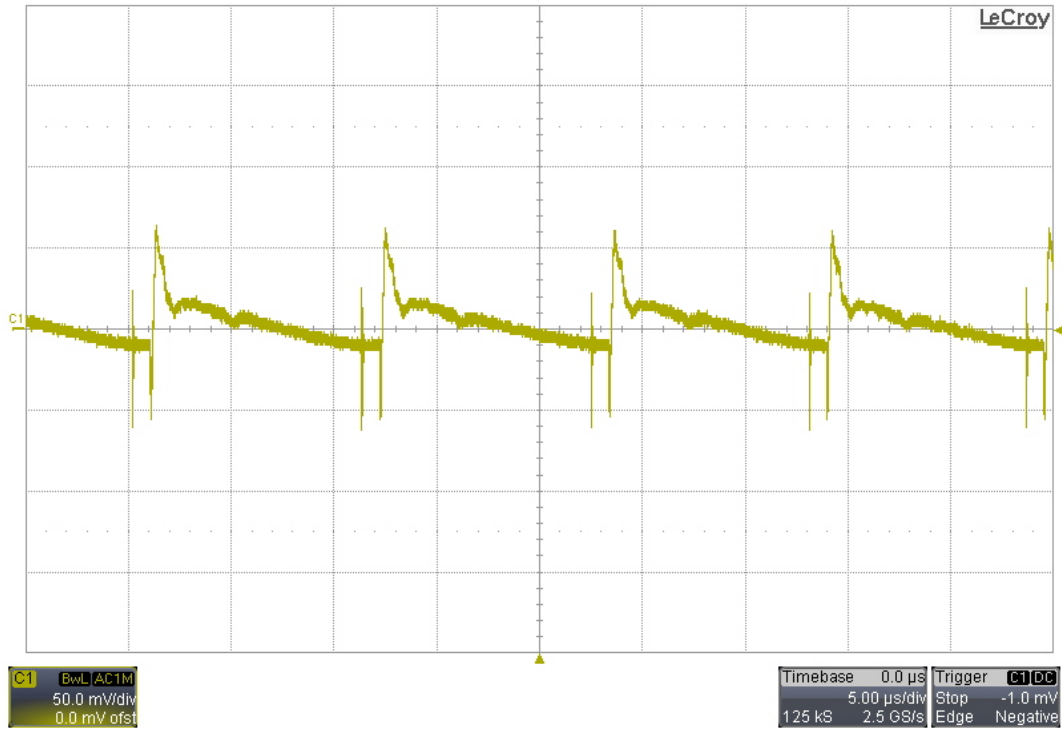


8 Output Ripple Voltage

8.1 120VAC/60Hz – Measured at TP3/TP2 – 3A Load

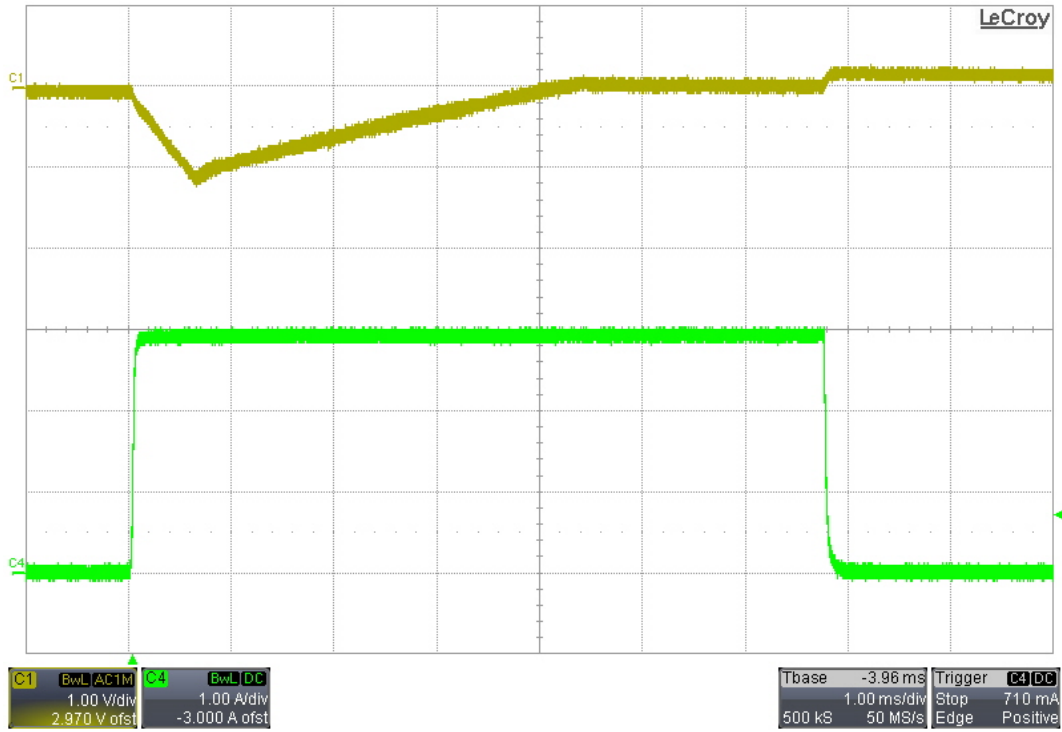


8.2 230VAC/50Hz – Measured at TP3/TP2 – 3A Load

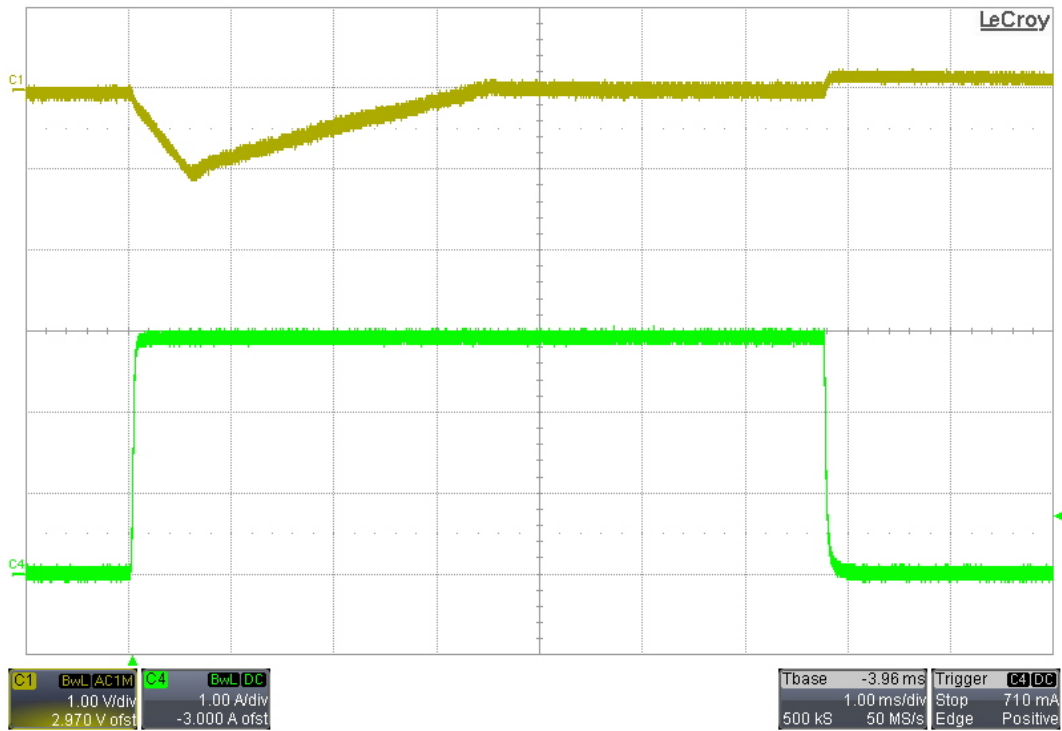


9 Load Transients

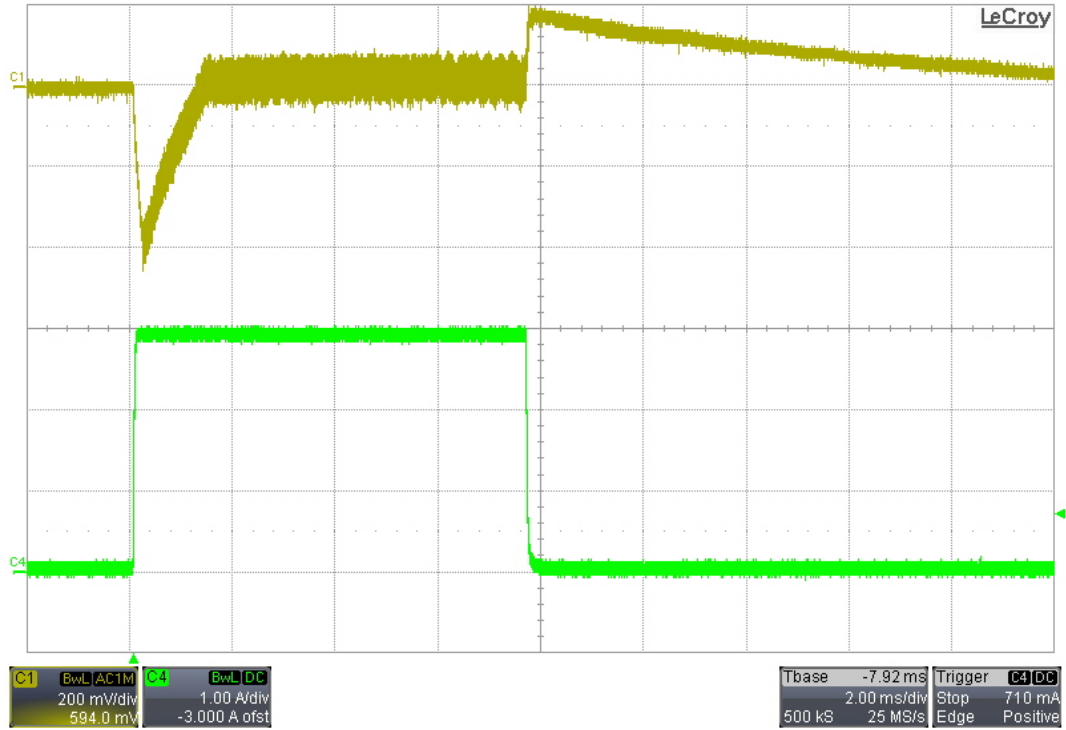
9.1 0A to 3A; Transient 120VAC/60Hz Input



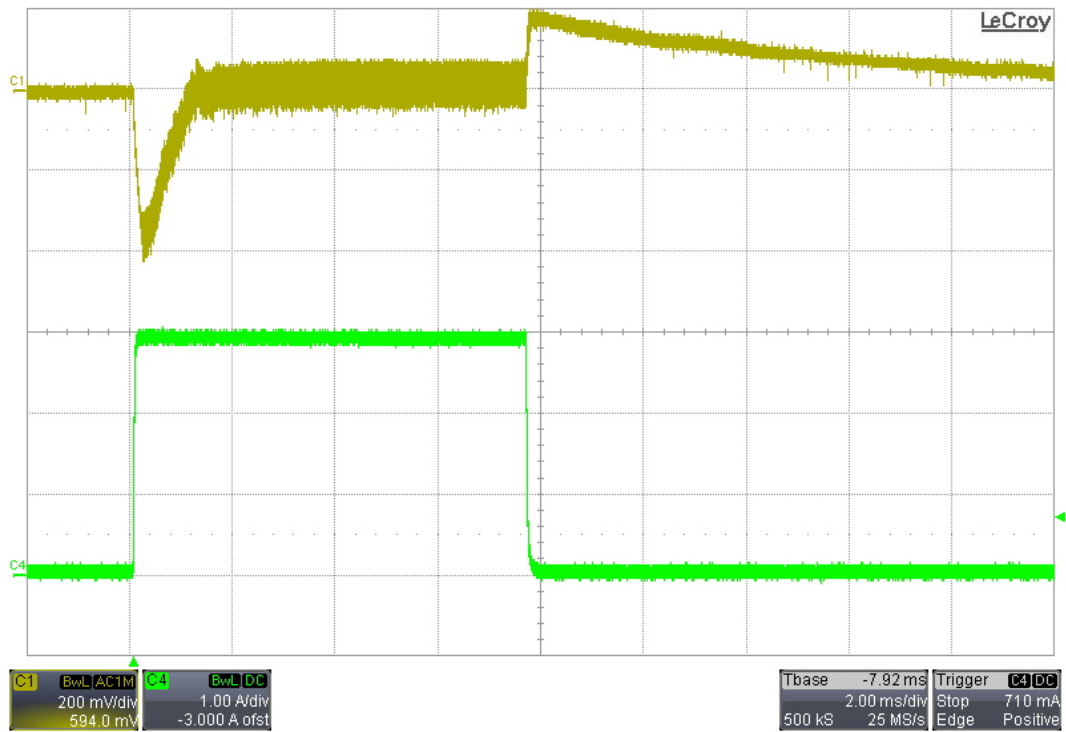
9.2 0A to 3A Transient; 230VAC/50Hz Input



9.3 50mA to 3A Transient; 120VAC/60Hz Input



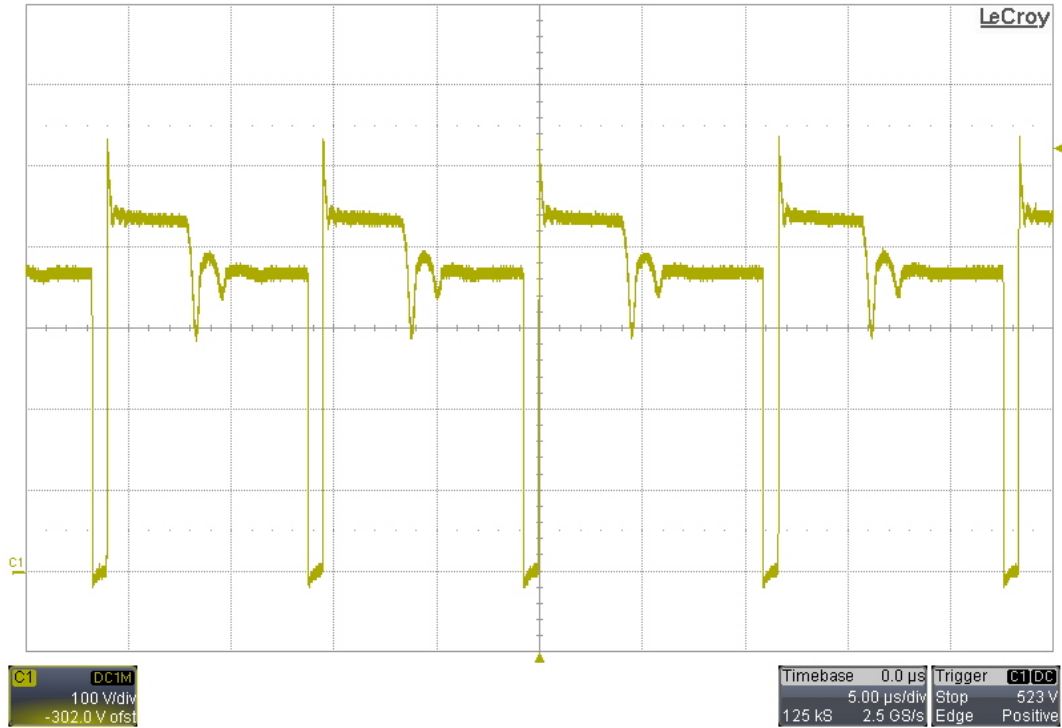
9.4 50mA to 3A Transient; 230VAC/50Hz Input



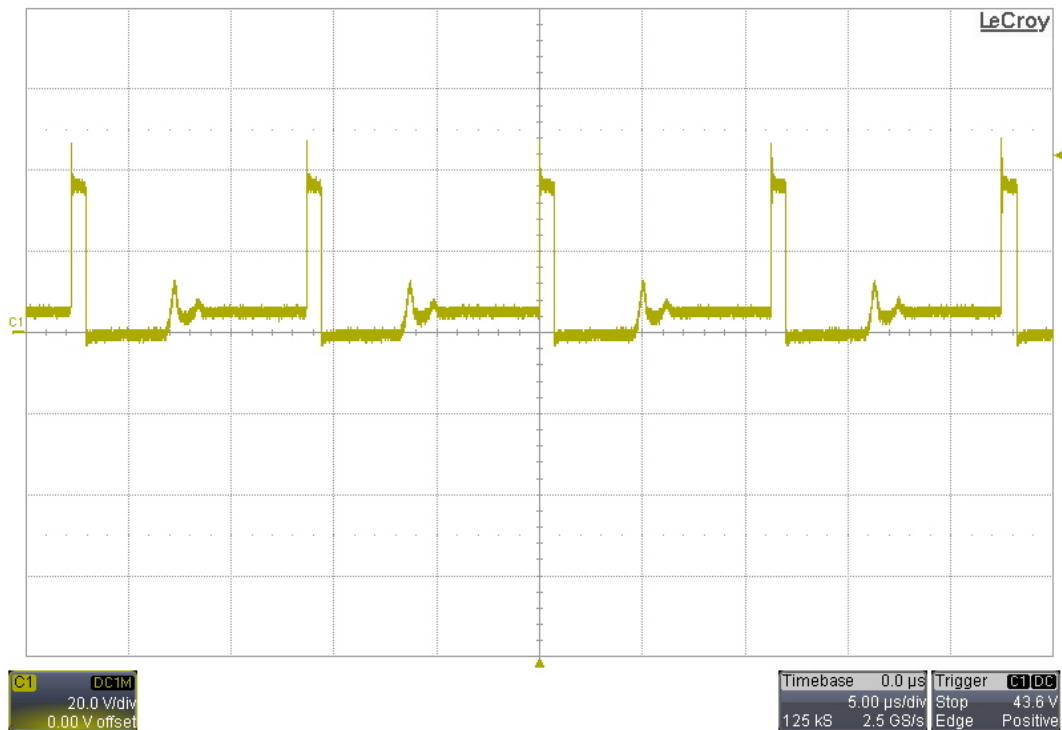
10 Switching Waveforms

The input was 265VAC/50Hz, and the output was loaded with 3A.

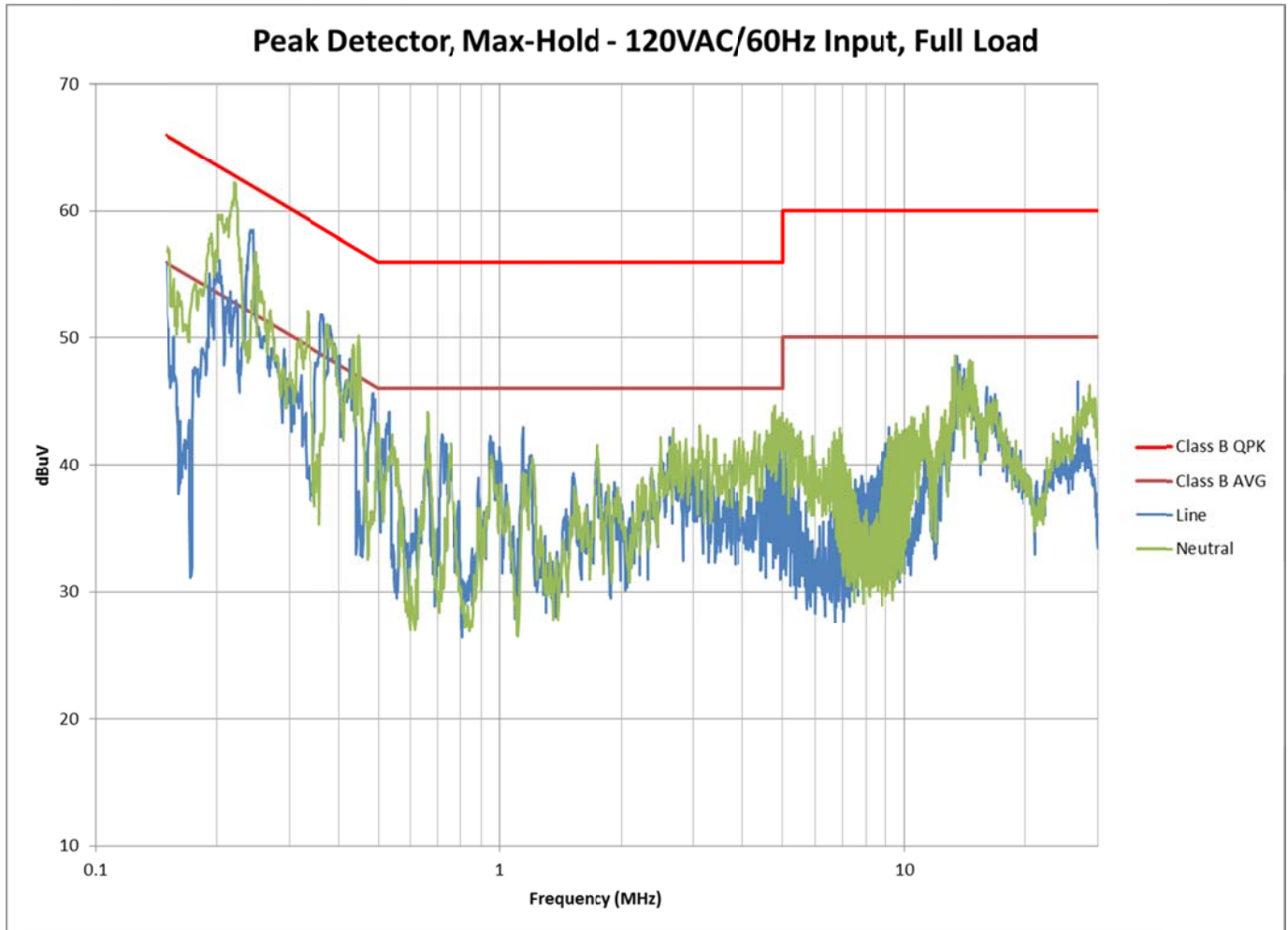
10.1 Drain of Primary FET – Q1

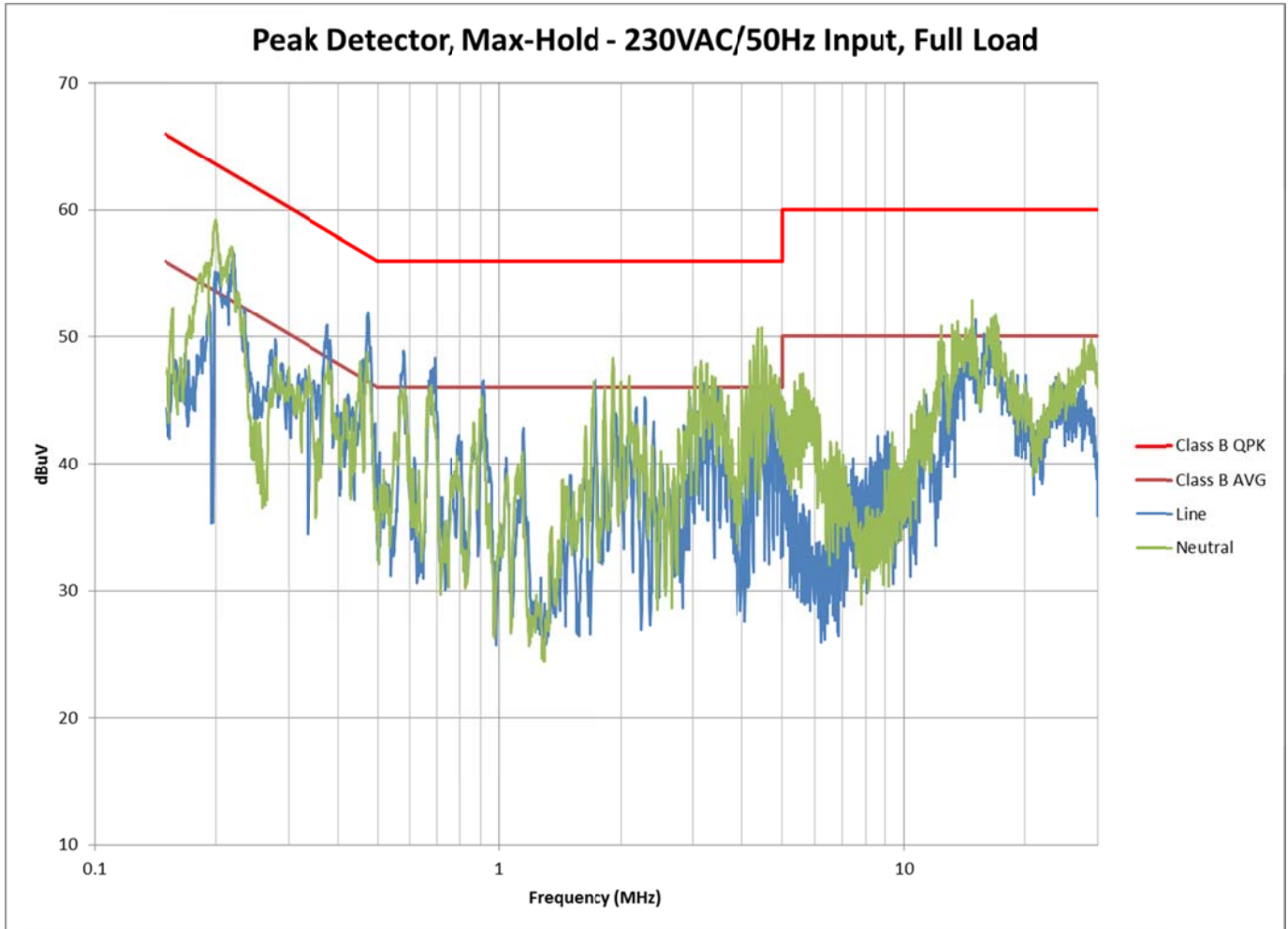


10.2 Cathode of Output Diode – D4



11 Conducted Emissions





IMPORTANT NOTICE AND DISCLAIMER

TI PROVIDES TECHNICAL AND RELIABILITY DATA (INCLUDING DATASHEETS), DESIGN RESOURCES (INCLUDING REFERENCE DESIGNS), APPLICATION OR OTHER DESIGN ADVICE, WEB TOOLS, SAFETY INFORMATION, AND OTHER RESOURCES "AS IS" AND WITH ALL FAULTS, AND DISCLAIMS ALL WARRANTIES, EXPRESS AND IMPLIED, INCLUDING WITHOUT LIMITATION ANY IMPLIED WARRANTIES OF MERCHANTABILITY, FITNESS FOR A PARTICULAR PURPOSE OR NON-INFRINGEMENT OF THIRD PARTY INTELLECTUAL PROPERTY RIGHTS.

These resources are intended for skilled developers designing with TI products. You are solely responsible for (1) selecting the appropriate TI products for your application, (2) designing, validating and testing your application, and (3) ensuring your application meets applicable standards, and any other safety, security, or other requirements. These resources are subject to change without notice. TI grants you permission to use these resources only for development of an application that uses the TI products described in the resource. Other reproduction and display of these resources is prohibited. No license is granted to any other TI intellectual property right or to any third party intellectual property right. TI disclaims responsibility for, and you will fully indemnify TI and its representatives against, any claims, damages, costs, losses, and liabilities arising out of your use of these resources.

TI's products are provided subject to TI's Terms of Sale (<https://www.ti.com/legal/termsofsale.html>) or other applicable terms available either on [ti.com](https://www.ti.com) or provided in conjunction with such TI products. TI's provision of these resources does not expand or otherwise alter TI's applicable warranties or warranty disclaimers for TI products.

Mailing Address: Texas Instruments, Post Office Box 655303, Dallas, Texas 75265
Copyright © 2021, Texas Instruments Incorporated