

LAYER STACKUP

LAYER	DEFINITION	PREPREG/CORE THICKNESS (MILS)	FINISHED Cu WT.
	SILKSCREEN		
	SOLDERMASK		
1	SIGNAL		1/2 OZ
1			
PREPREG		3.8	
2	PLANE		1/2 OZ
PREPREG		4.0	
3	SIGNAL		1/2 OZ
CORE		7.2	
4	PLANE		1/2 OZ
PREPREG		3.5	
5	SIGNAL		1/2 OZ
PREPREG		14.5	
6	SIGNAL		1/2 OZ
PREPREG		3.5	
7	PLANE		1/2 OZ
PREPREG		7.2	
8	SIGNAL		1/2 OZ
PREPREG		4.0	
9	PLANE		1/2 OZ
PREPREG		3.8	
10	SIGNAL		1/2 OZ
10			
	SOLDERMASK		
	SILKSCREEN		

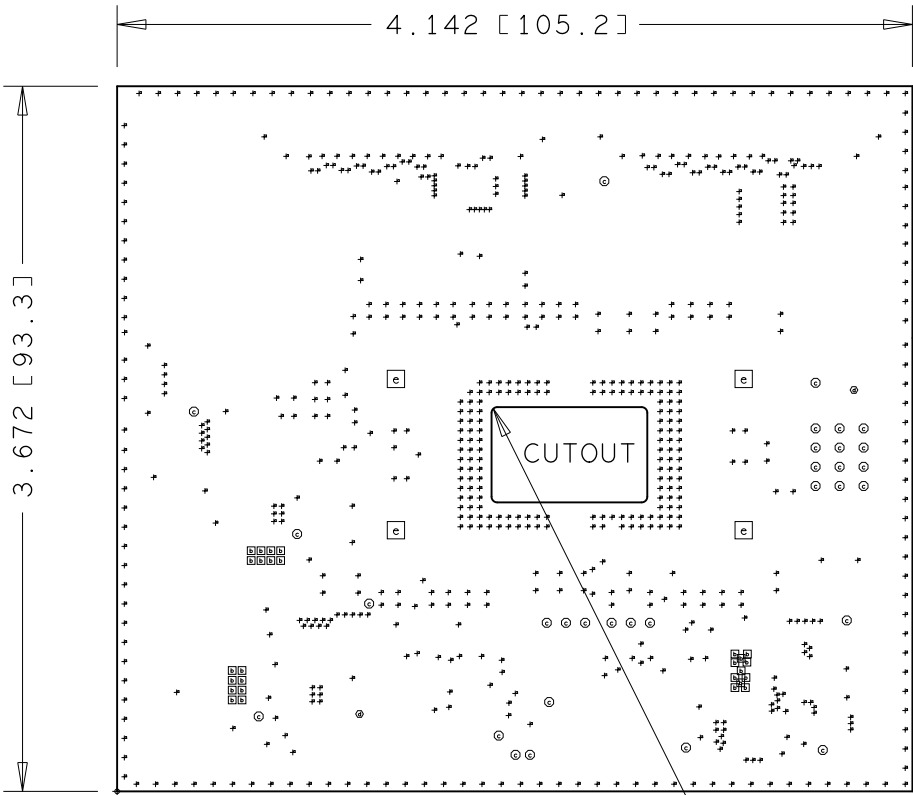
0.062 ± 10%

FAB NOTES:

- ALL DIMENSIONS ARE IN INCHES (MM).
- THE PWB SHALL BE FABRICATED TO IPC-6012, CLASS 2 AND WORKMANSHIP SHALL CONFORM TO IPC-A-600, CLASS 2. CURRENT REVISIONS.
- BOARD MATERIAL TO BE FR-4 (Isola FR408) EPOXY GLASS LAMINATE, AND IS TO MEET OR EXCEED MIL-P-13949. COLOR: NATURAL.
- ALL BOARDS MUST MEET OR EXCEED UL94V-0 REQUIREMENTS. PCB MUST BEAR THE UL94V-0 UL REGISTERED MATERIAL ID NUMBER.
- OVERALL BOARD THICKNESS TO BE .062" +/- 10% AND APPLIES AFTER ALL LAMINATION AND PLATING PROCESSES, MEASURED FROM COPPER TO COPPER.
- SEE STACKUP CHART FOR LAYER THICKNESS AND IMPEDANCE REQUIREMENTS. VENDOR MAY ADJUST DIELECTRIC THICKNESSES TO MEET IMPEDANCE REQUIREMENT.
- MAX. WARP & TWIST TO BE .01 INCHES PER INCH.
- VIAS SHOULD BE TEARDROPPED BY FAB VENDOR.
- SEE DETAIL-A FOR CUTOUT DETAILS

PROCESS NOTES:

- A) PLATE CIRCUITARY ON OUTER LAYERS TO 2-5uIN OF GOLD OVER 200uIN OF NICKEL. KNOOP HARDNESS 130-200.  
B) SELECTIVE PLATING TO MIN 50uIN OF GOLD OVER 200uIN OF NICKEL. KNOOP HARDNESS 130-200 PER ARTWORK SLPT (SELECTIVE PLATE TOP)
- BOARD MUST BE ELECTRICALLY TESTED USING SUPPLIED IPC-D-356 NETLIST.
- APPLY LPI SOLDERMASK.  
→ COLOR:BLUE  
CONFORM TO IPC-SM-840, CLASS H. CURRENT REV. EXCEPT AS NOTED BELOW, SOLDERMASK ARTWORK IS SIZED 1:1 WITH SOLDER PAD FEATURES. VENDOR TO ADJUST FOR THEIR PROCESSES. MUST MAINTAIN WEB OF SOLDERMASK BETWEEN ALL EXPOSED PLATED SURFACES.
- APPLY LPI SILKSCREEN BOTH SIDES USING NON-CONDUCTIVE EPOXY INK. COLOR: WHITE.

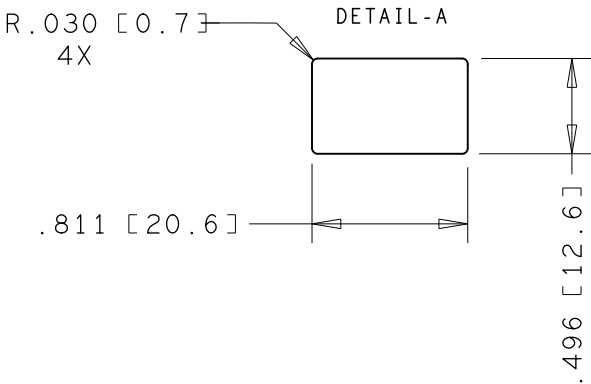


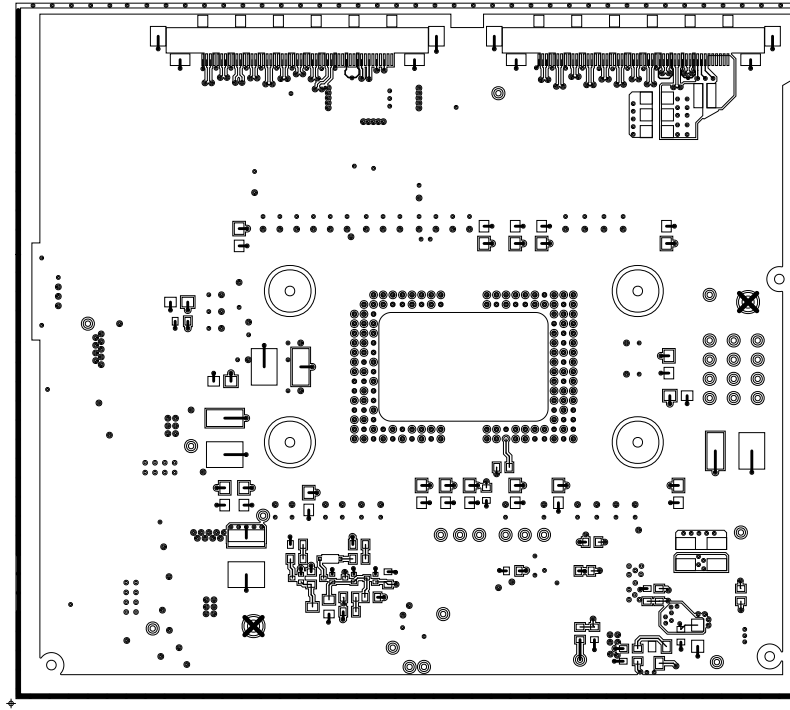
R.030  
4X

CUSTOMER NAME TEXAS INSTRUMENTS				DRAWN SVTRONICS	
BOARD NAME DLP471TE and DLP650TE EVMs			DESCRIPTION DRILL CHART FAB DWG		
BOARD NO.		REV A	DATE 03-10-2021	PRJ# DLP057	SH 19 OF 21

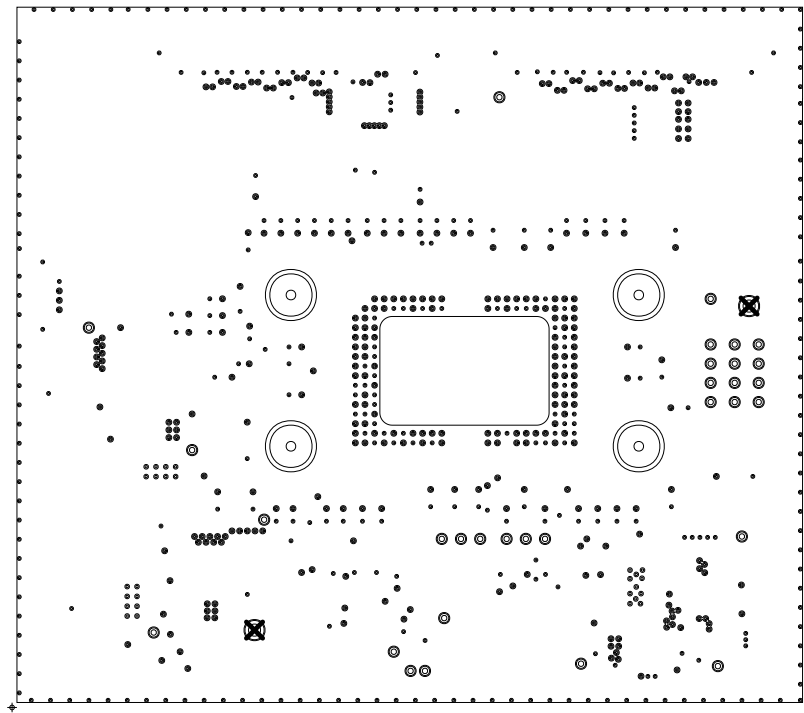
IMPEDANCE REQUIREMENTS		
LAYER	50 OHMS LINE WIDTH (MILS)	100 OHMS DIFFERENTIAL LINE WIDTH/SPACING (MILS)
1	7	5/7
3	5	4.5/7
6	5.25	
8	5	4.5/7
10	7	5/7

DRILL CHART: TOP to BOTTOM				
ALL UNITS ARE IN MILS				
FIGURE	SIZE	TOLERANCE	PLATED	QTY
+	10.0	+0.0/-10.0	PLATED	678
■	12.0	+3.0/-3.0	PLATED	27
⊙	28.0	+3.0/-3.0	PLATED	31
⊗	63.0	+3.0/-3.0	PLATED	2
□	220.0	+3.0/-3.0	NON-PLATED	4

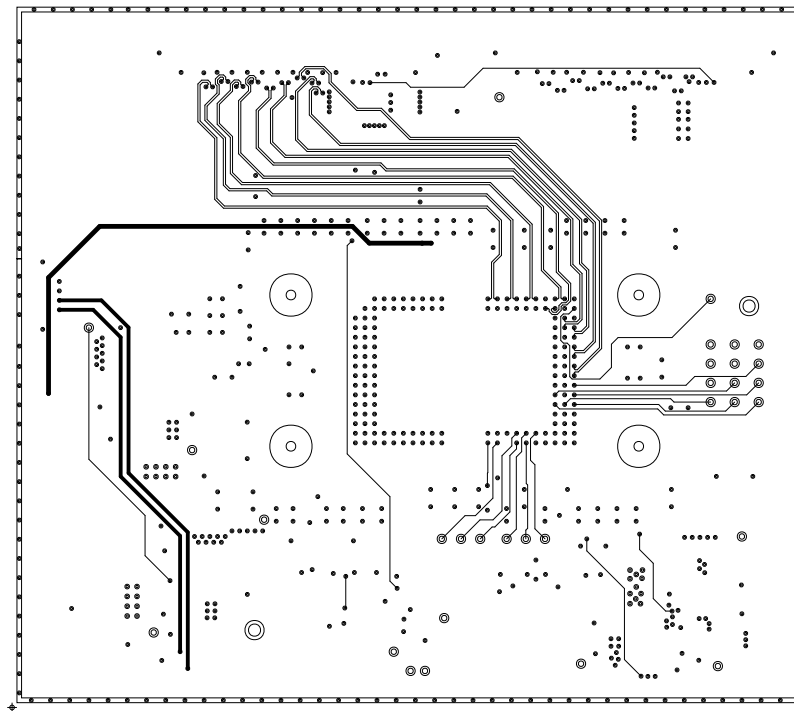




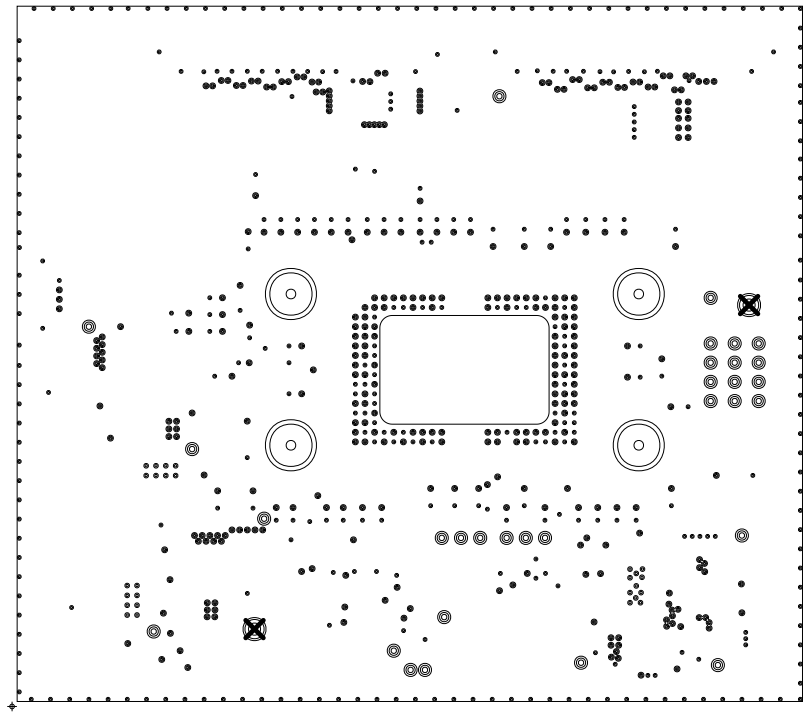
CUSTOMER NAME		TEXAS INSTRUMENTS		DRAWN		SVTRONICS	
BOARD NAME		DLP471TE and DLP650TE EVMs		DESCRIPTION		LAYER 1 - TOP	
BOARD NO.		REV	DATE	PRJ#	SH	OF	
		A	03-10-2021	DLP057	1	21	



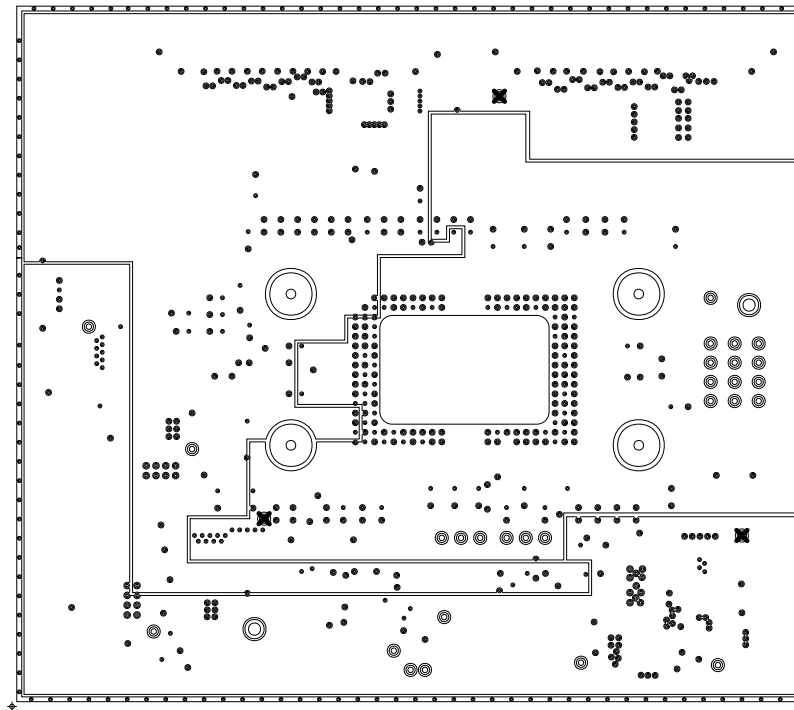
CUSTOMER NAME TEXAS INSTRUMENTS				DRAWN SVTRONICS	
BOARD NAME DLP471TE and DLP650TE EVMs			DESCRIPTION LAYER 2 - GND PLANE		
BOARD NO.	REV A	DATE 03-10-2021	PRJ# DLP057	SH 2	OF 21



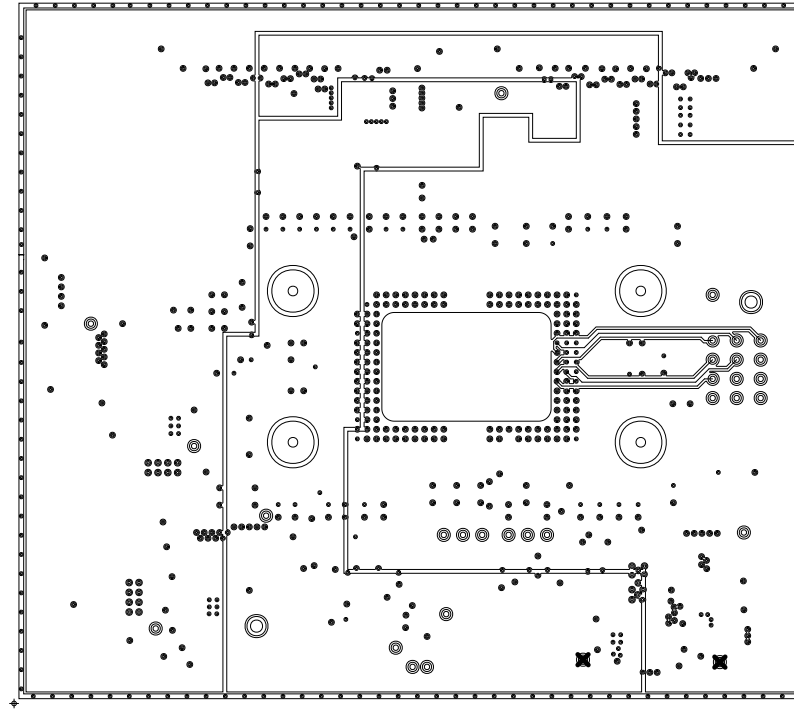
CUSTOMER NAME TEXAS INSTRUMENTS				DRAWN SVTRONICS	
BOARD NAME DLP471TE and DLP650TE EVMs			DESCRIPTION LAYER 3 - SIGNAL		
BOARD NO.	REV A	DATE 03-10-2021	PRJ# DLP057	SH 3	OF 21



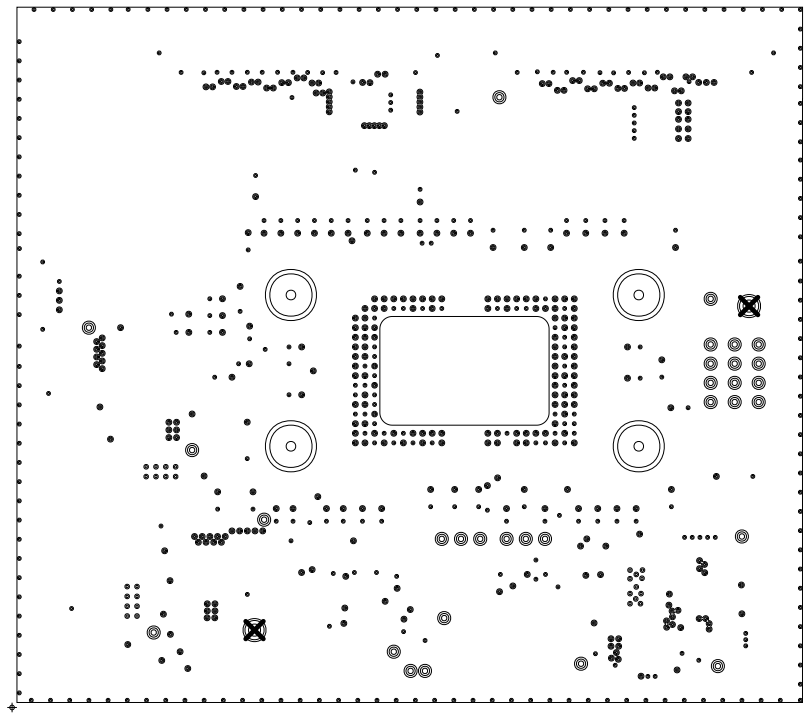
CUSTOMER NAME				TEXAS INSTRUMENTS		DRAWN	
						SVTRONICS	
BOARD NAME				DESCRIPTION			
DLP471TE and DLP650TE EVMs				LAYER 4 - GND PLANE			
BOARD NO.		REV	DATE	PRJ#	SH	OF	
		A	03-10-2021	DLP057	4	21	



CUSTOMER NAME TEXAS INSTRUMENTS				DRAWN SVTRONICS	
BOARD NAME DLP471TE and DLP650TE EVMs			DESCRIPTION LAYER 5 - PWR PLANE		
BOARD NO.	REV A	DATE 03-10-2021	PRJ# DLP057	SH 5	OF 21

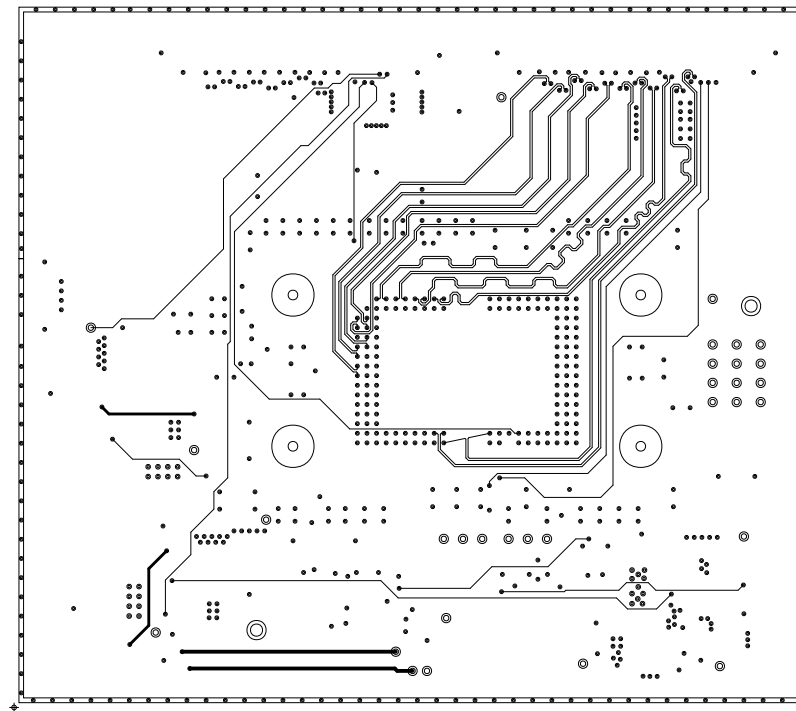


CUSTOMER NAME				TEXAS INSTRUMENTS		DRAWN		SVTRONICS		
BOARD NAME				DESCRIPTION						
DLP471TE and DLP650TE EVMs				LAYER 6 - MIXED SIGNAL/PWR PLANE						
BOARD NO.			REV	DATE		PRJ#		SH	OF	
			A	03-10-2021		DLP057		6	21	

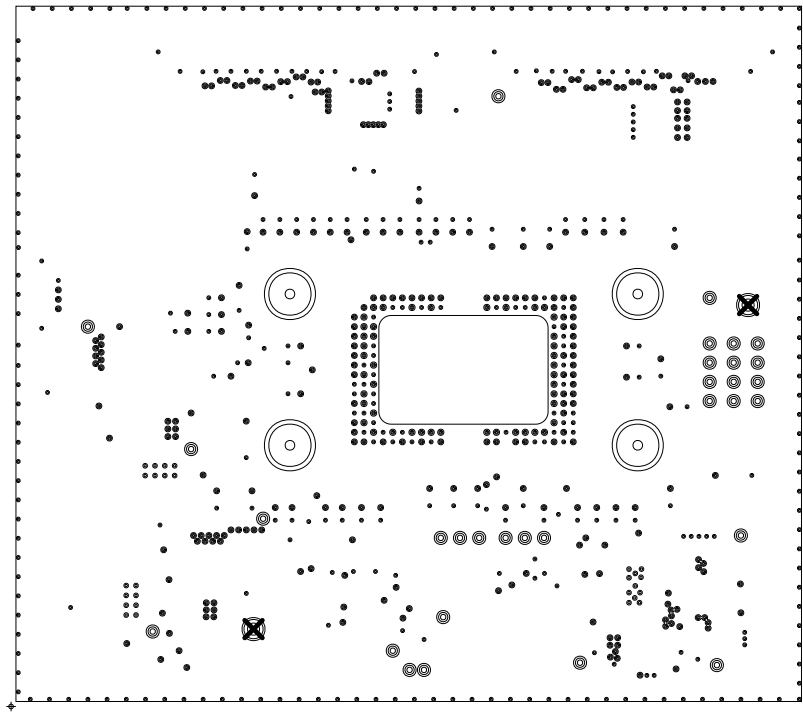


CUSTOMER NAME				TEXAS INSTRUMENTS		DRAWN		SVTRONICS									
BOARD NAME				DLP471TE and DLP650TE EVMs		DESCRIPTION				LAYER 7 - GND PLANE							
BOARD NO.				REV	A	DATE		03-10-2021		PRJ#		DLP057		SH	7	OF	21

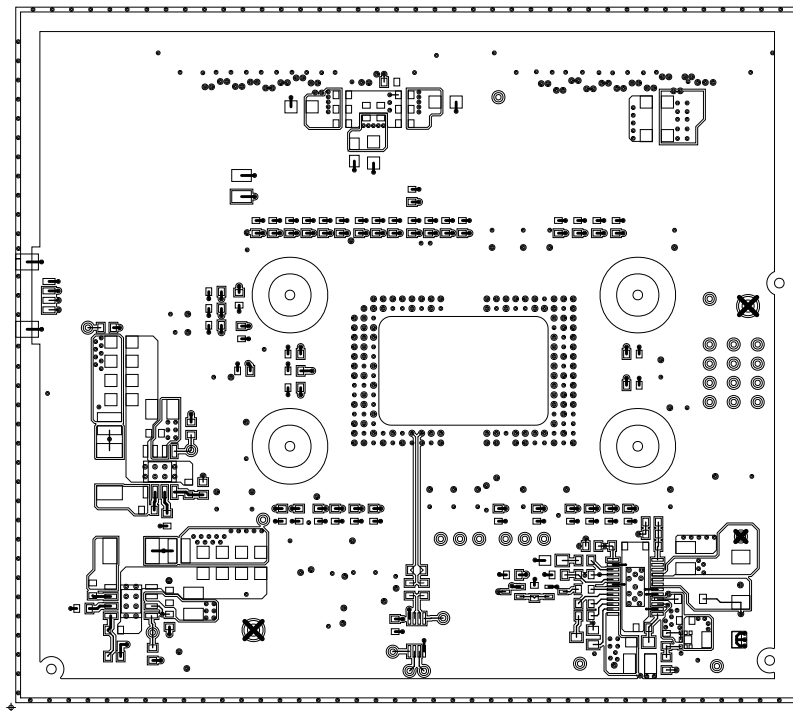




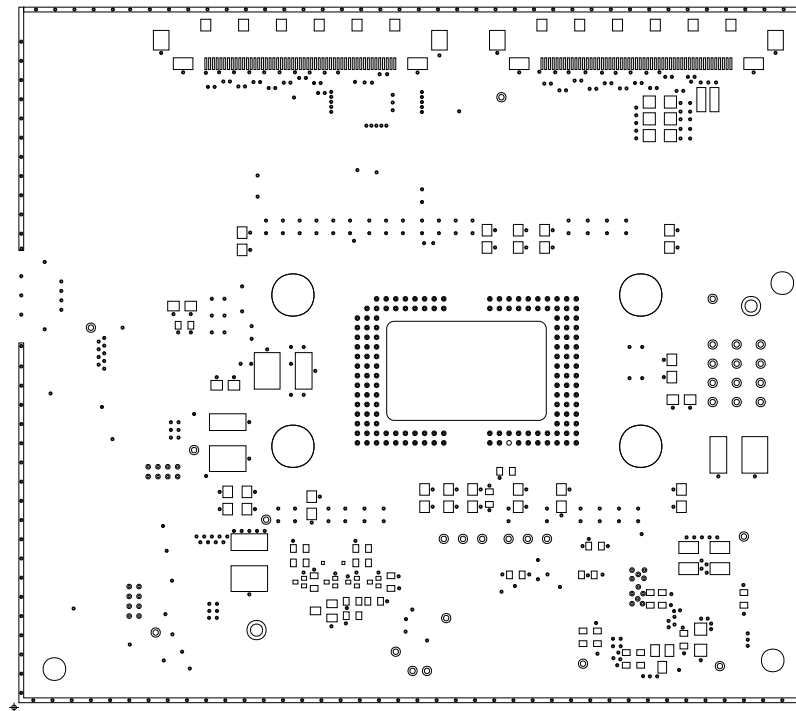
CUSTOMER NAME TEXAS INSTRUMENTS				DRAWN SVTRONICS	
BOARD NAME DLP471TE and DLP650TE EVMs			DESCRIPTION LAYER 8 - SIGNAL		
BOARD NO.	REV A	DATE 03-10-2021	PRJ# DLP057	SH 8	OF 21



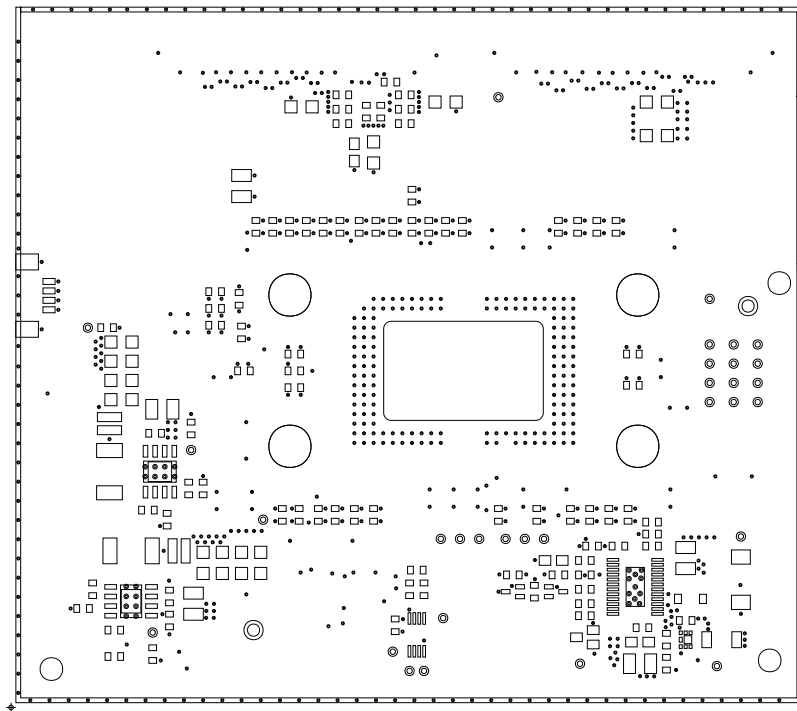
CUSTOMER NAME				TEXAS INSTRUMENTS		DRAWN	
						SVTRONICS	
BOARD NAME				DESCRIPTION			
DLP471TE and DLP650TE EVMs				LAYER 9 - GND PLANE			
BOARD NO.		REV	DATE	PRJ#	SH	OF	
		A	03-10-2021	DLP057	9	21	



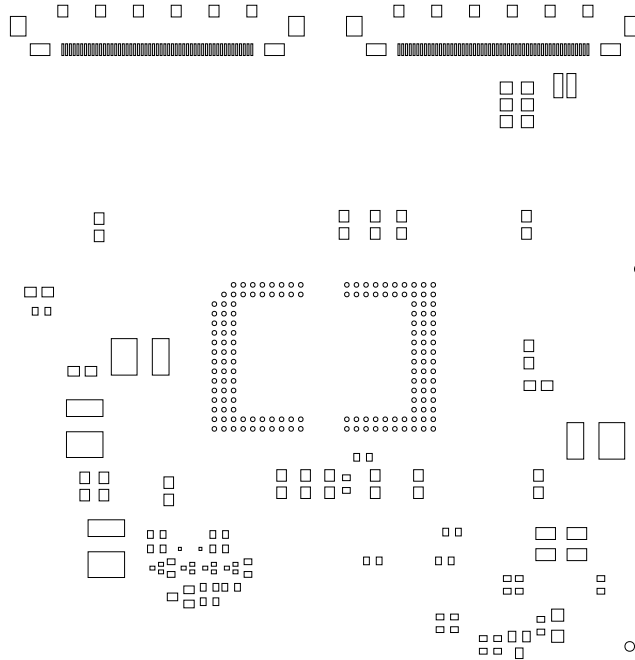
CUSTOMER NAME				TEXAS INSTRUMENTS		DRAWN		SVTRONICS	
BOARD NAME				DLP471TE and DLP650TE EVMs		DESCRIPTION			
						LAYER 10 - BOTTOM			
BOARD NO.			REV	DATE		PRJ#		SH OF	
			A	03-10-2021		DLP057		10 21	



CUSTOMER NAME				TEXAS INSTRUMENTS		DRAWN		SVTRONICS	
BOARD NAME				DLP471TE and DLP650TE EVMs		DESCRIPTION			
						SOLDERMASK TOP			
BOARD NO.			REV	DATE		PRJ#		SH	
			A	03-10-2021		DLP057		11 OF 21	



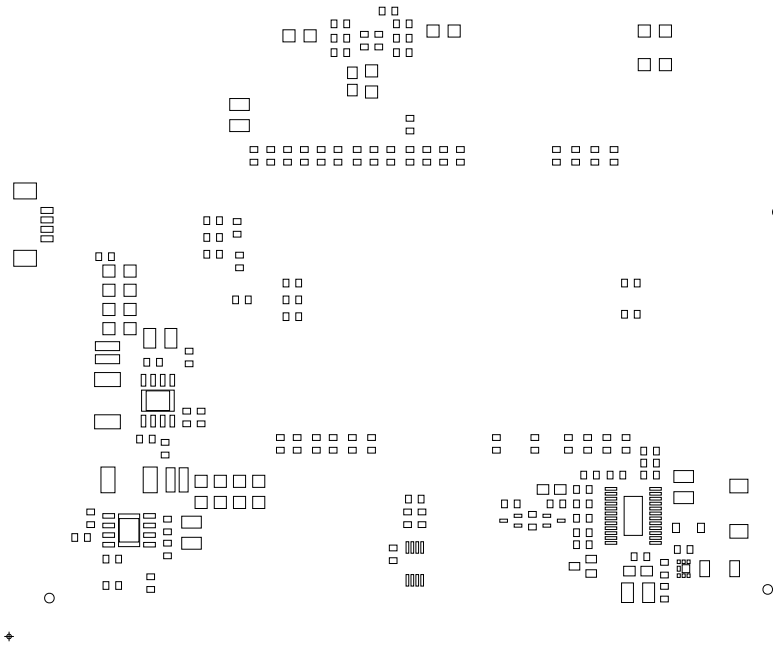
CUSTOMER NAME TEXAS INSTRUMENTS				DRAWN SVTRONICS	
BOARD NAME DLP471TE and DLP650TE EVMs			DESCRIPTION SOLDERMASK BOTTOM		
BOARD NO.	REV A	DATE 03-10-2021	PRJ# DLP057	SH 12	OF 21



+



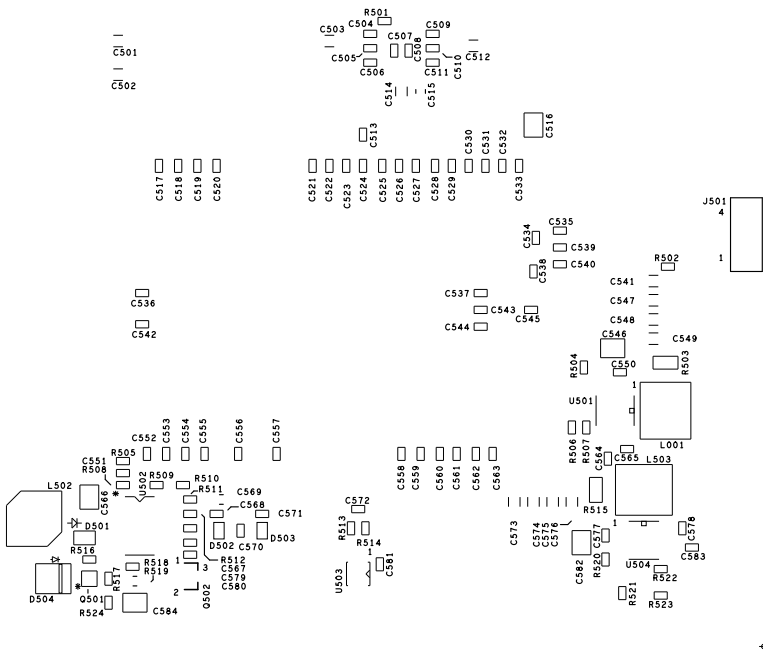
CUSTOMER NAME					TEXAS INSTRUMENTS					DRAWN		SVTRONICS							
BOARD NAME					DLP471TE and DLP650TE EVMs					DESCRIPTION					SOLDERPASTE TOP				
BOARD NO.					REV		DATE			PRJ#			SH		OF				
					A		03-10-2021			DLP057			15		21				



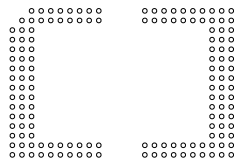
CUSTOMER NAME				TEXAS INSTRUMENTS		DRAWN	
						SVTRONICS	
BOARD NAME				DESCRIPTION			
DLP471TE and DLP650TE EVMs				SOLDERPASTE BOTTOM			
BOARD NO.			REV	DATE	PRJ#	SH	OF
			A	03-10-2021	DLP057	16	21

ART FILM - SST





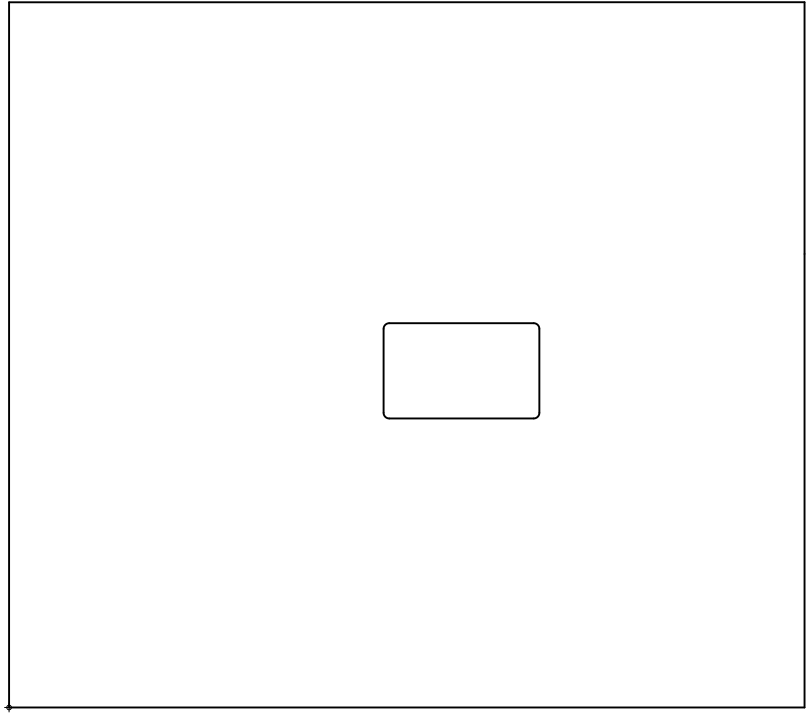
CUSTOMER NAME		TEXAS INSTRUMENTS		DRAWN	
BOARD NAME		DLP471TE and DLP620TE EVMs		2/14/01	
DESCRIPTION		SILKSCREEN BOTTOM		REV	
BOARD NO.		A		PRJ#	
DATE		03-10-2001		DLP025	
REV		14		SH	



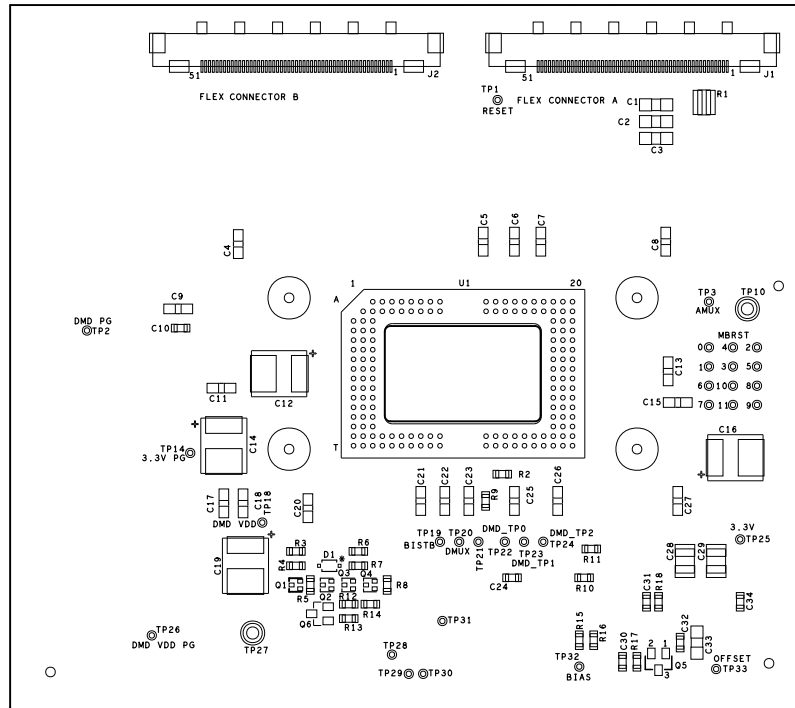
+



CUSTOMER NAME TEXAS INSTRUMENTS				DRAWN SVTRONICS	
BOARD NAME DLP471TE and DLP650TE EVMs			DESCRIPTION SELECTIVE PLATING TOP		
BOARD NO.	REV A	DATE 03-10-2021	PRJ# DLP057	SH 17	OF 21



CUSTOMER NAME TEXAS INSTRUMENTS					DRAWN SVTRONICS	
BOARD NAME DLP471TE and DLP650TE EVMs			DESCRIPTION OUTLINE			
BOARD NO.	REV A	DATE 03-10-2021	PRJ# DLP057		SH 18 OF 21	



NOTE : PL14927-1542-01F (Z\_MECH1) socket part is placed down first on board in the location for U1  
The U1 part will be placed on socket afterwards

CUSTOMER NAME					TEXAS INSTRUMENTS		DRAWN		SVTRONICS			
BOARD NAME					DLP471TE and DLP650TE EVMs							
DESCRIPTION					ASSEMBLY TOP							
BOARD NO.				REV	DATE		PRJ#		SH		OF	
				A	03-10-2021		DLP057		20		21	

