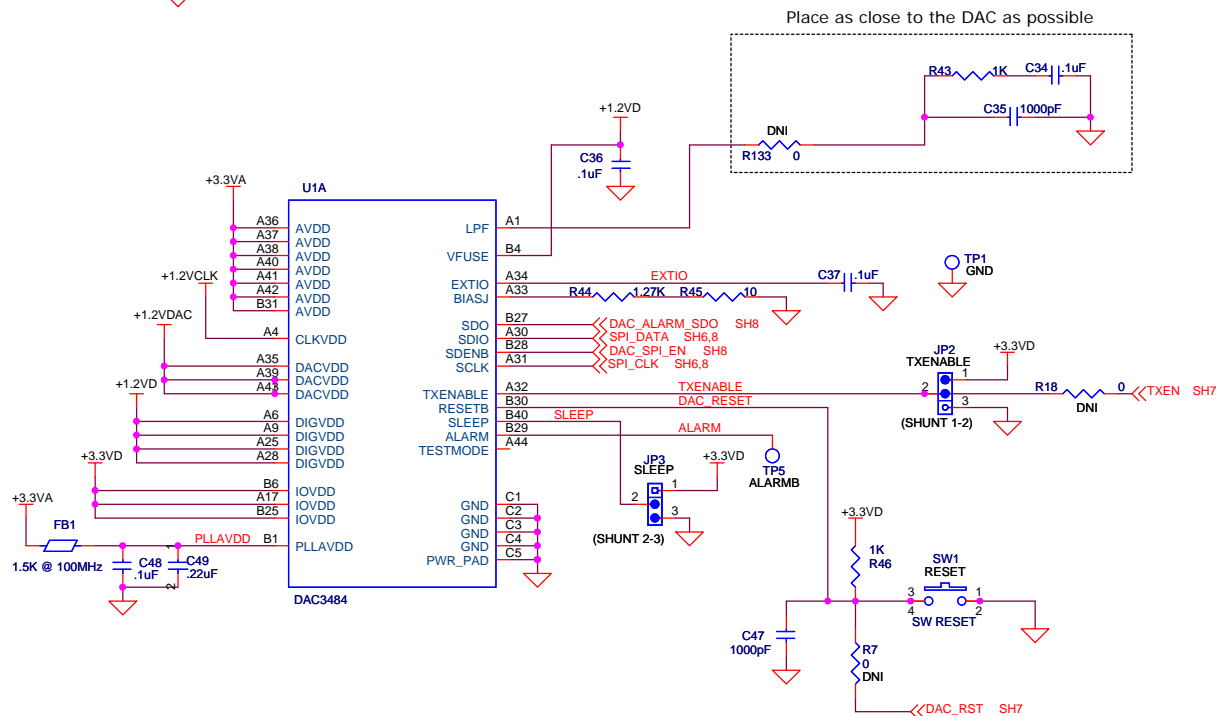
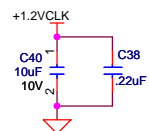
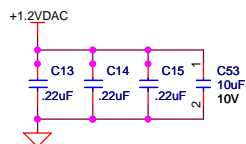
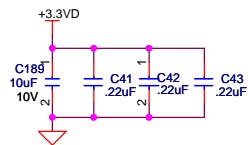
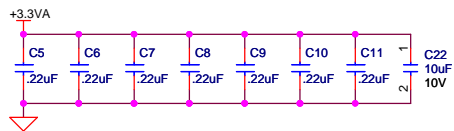
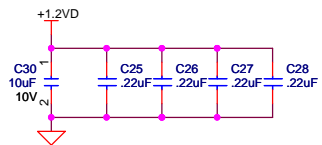
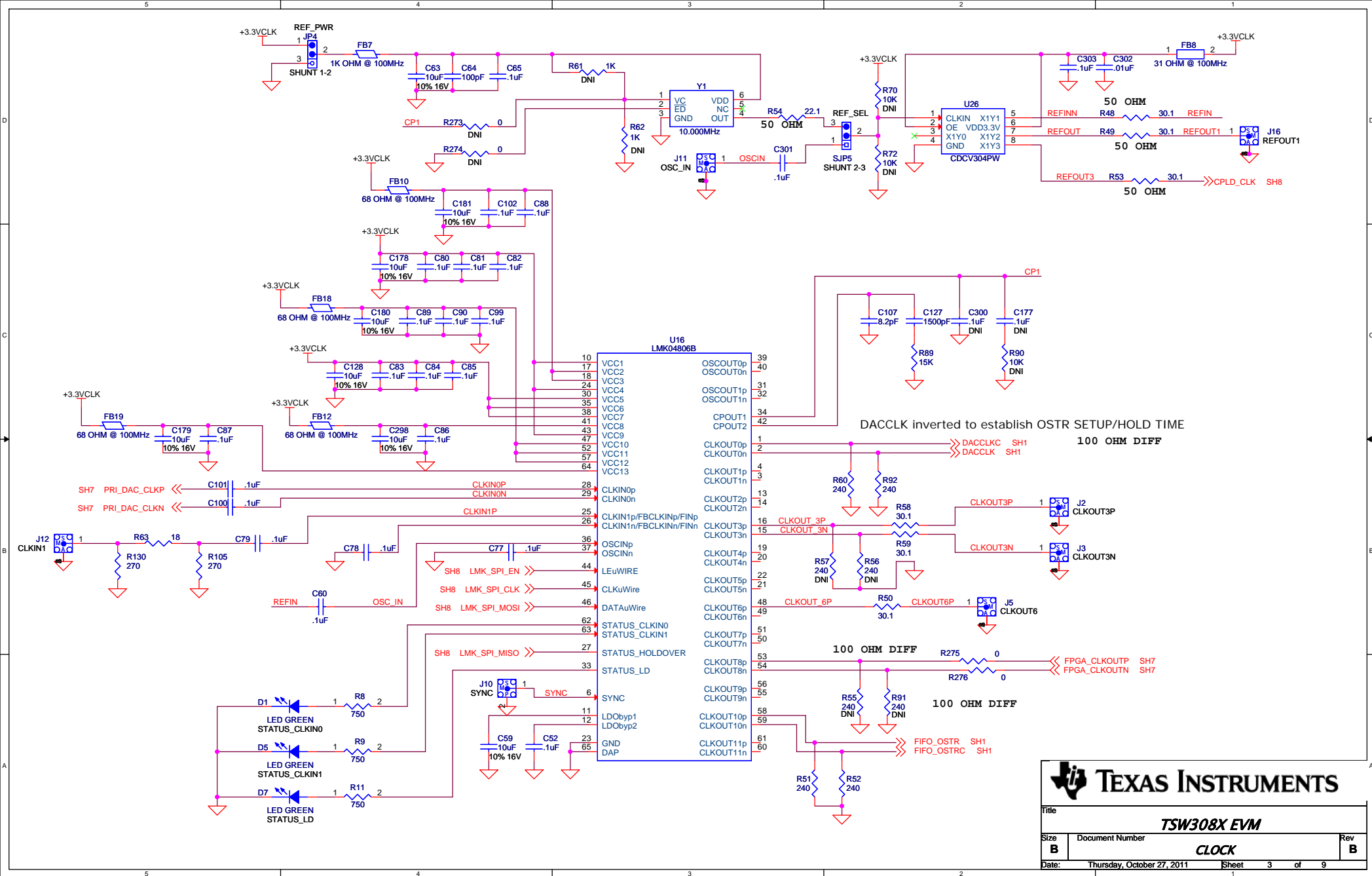


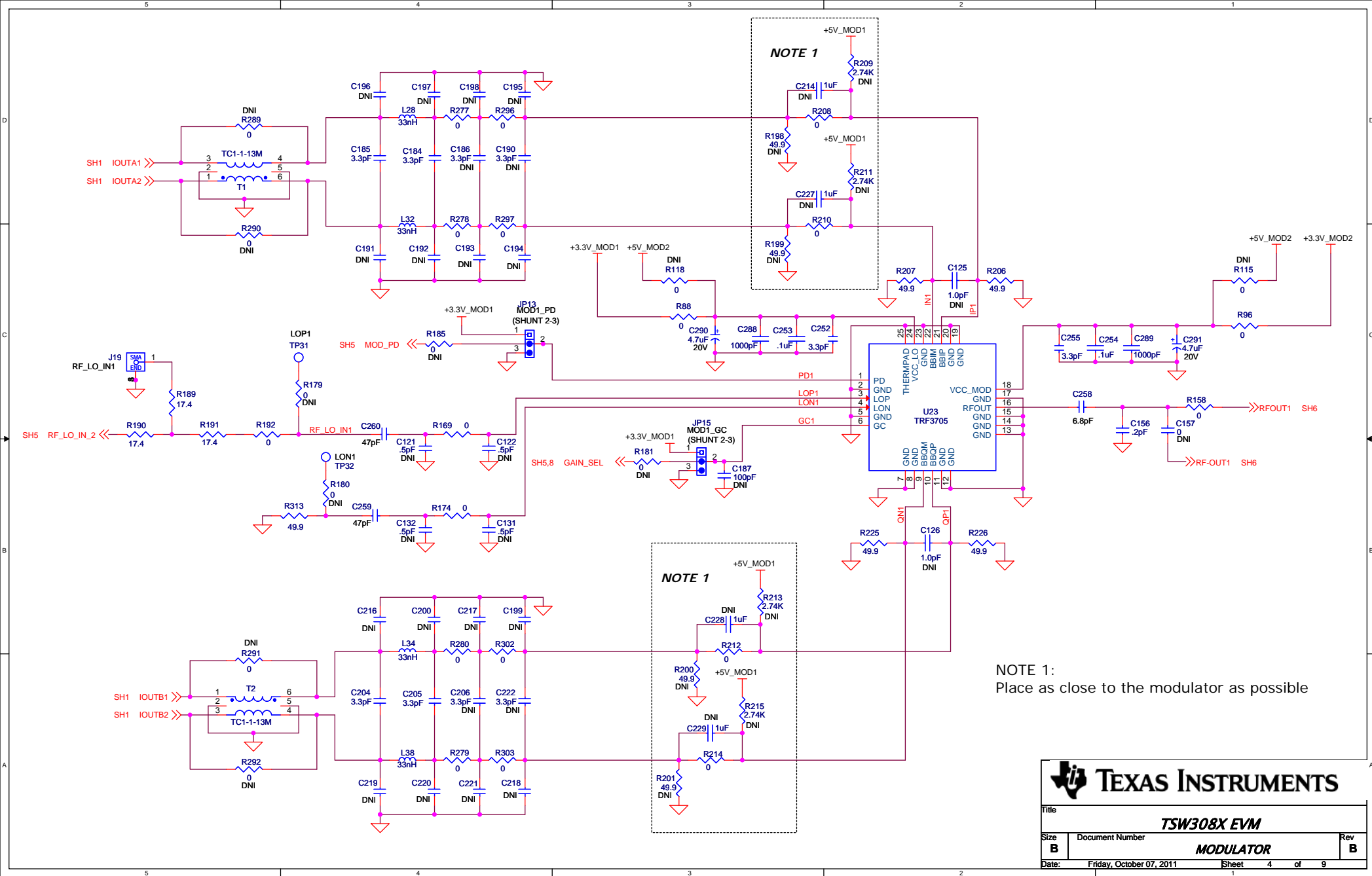
Title				
<b>TSW308X EVM</b>				
Size	Document Number			Rev
<b>B</b>	<b>DAC</b>			<b>B</b>
Date:	Wednesday, October 12, 2011		Sheet	1 of 9

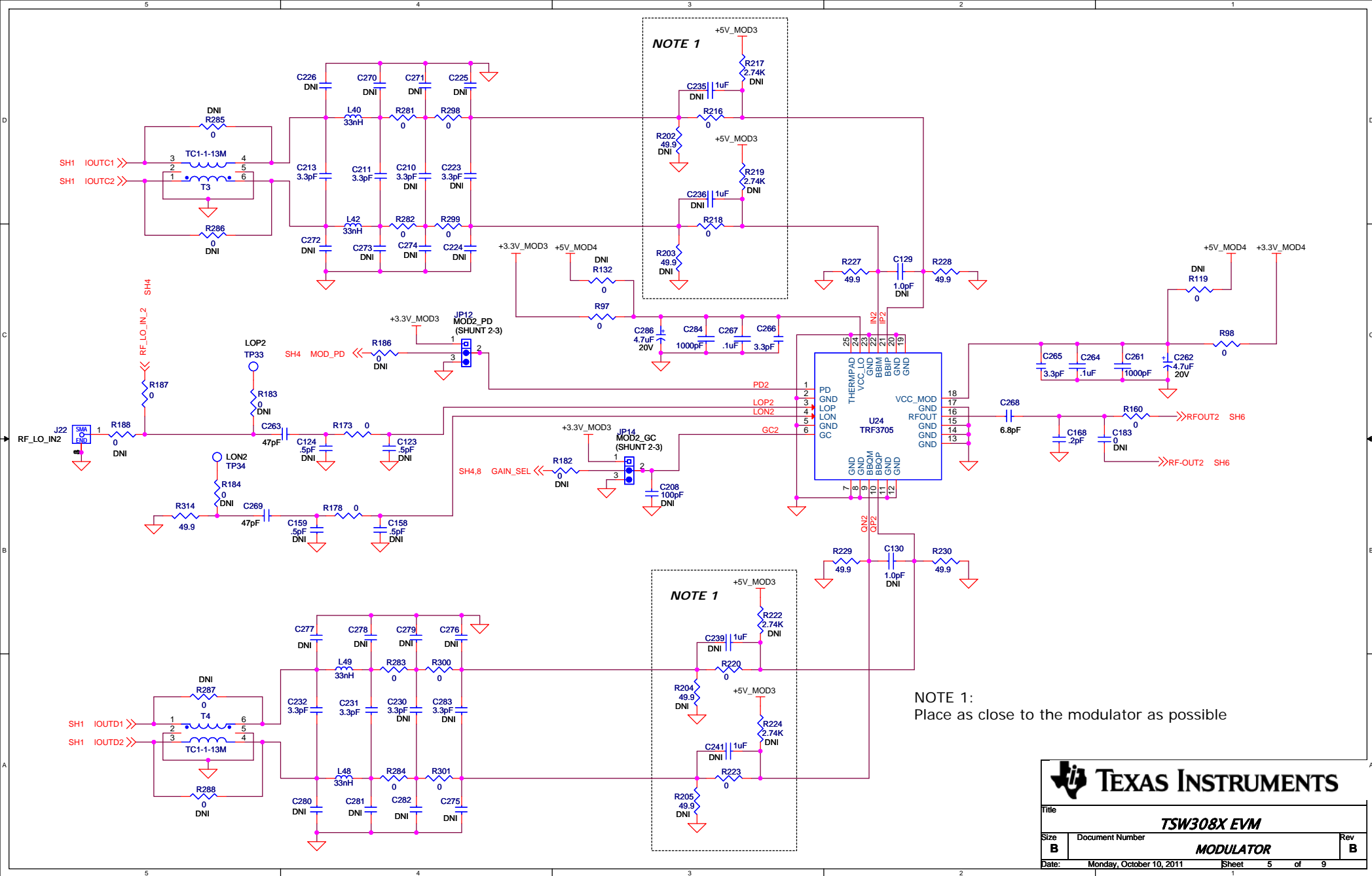
1) DNI = DO NOT INSTALL

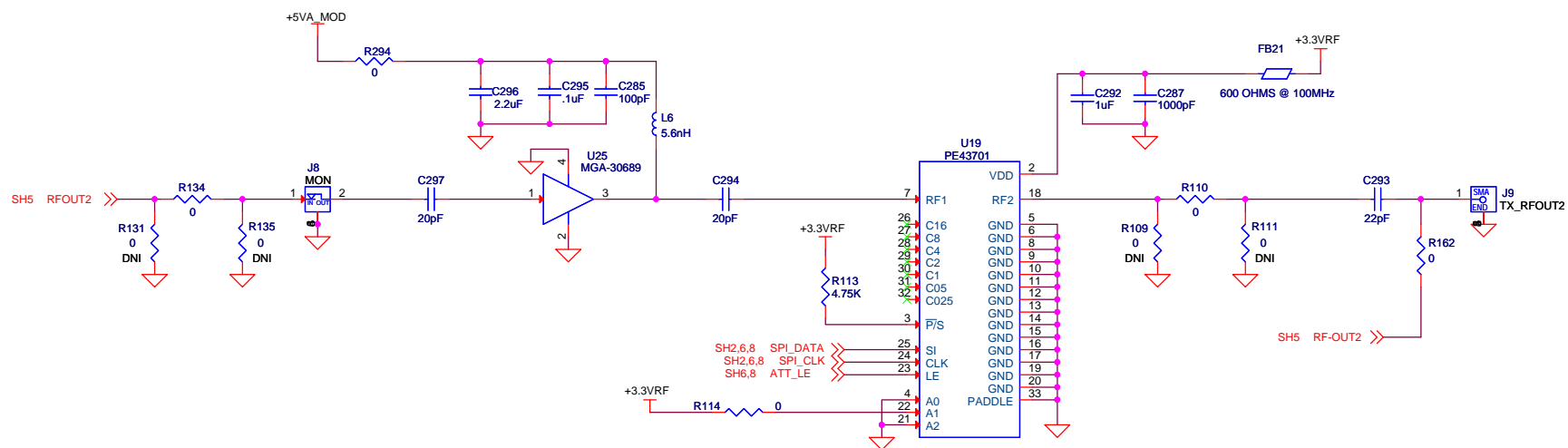
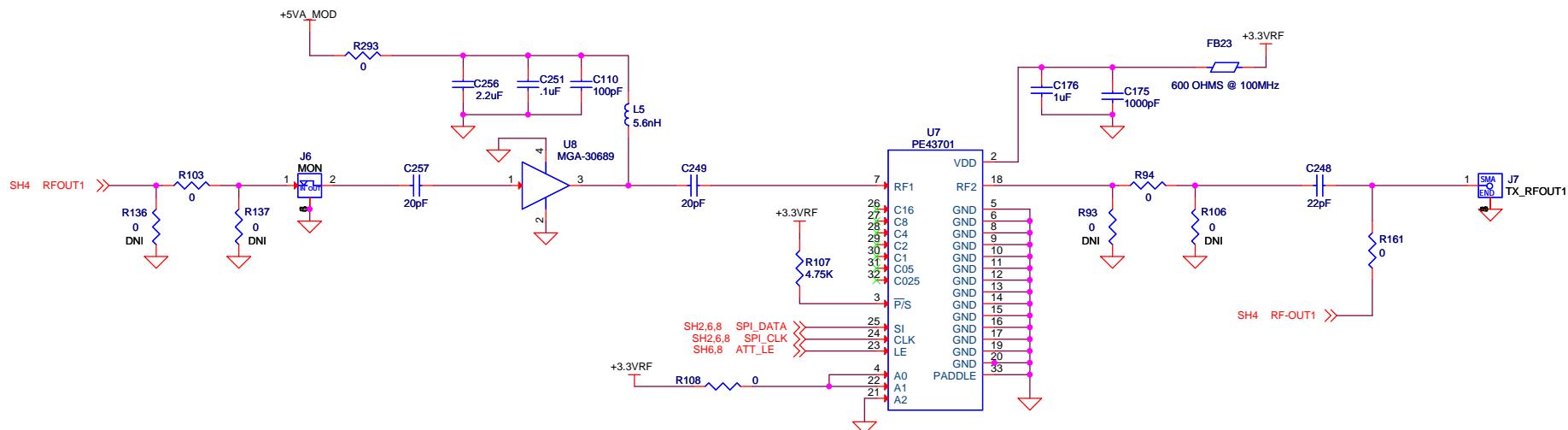


Title		
TSW308X EVM		
Size	Document Number	Rev
B	DAC	B
Date:	Friday, October 07, 2011	Sheet 2 of 9

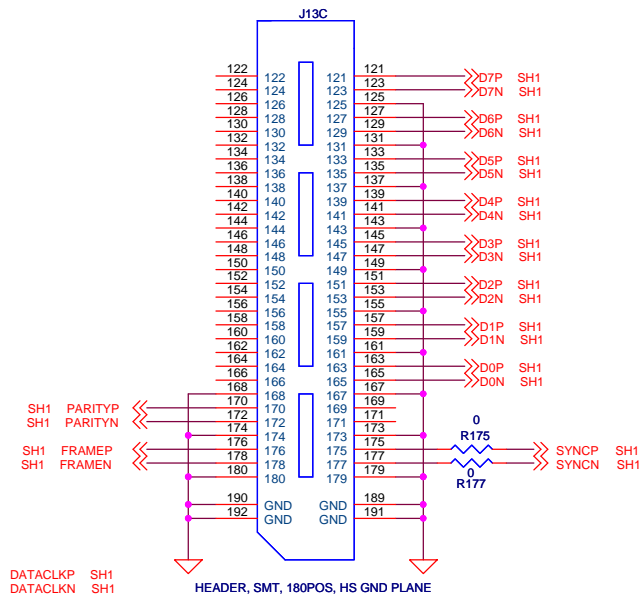
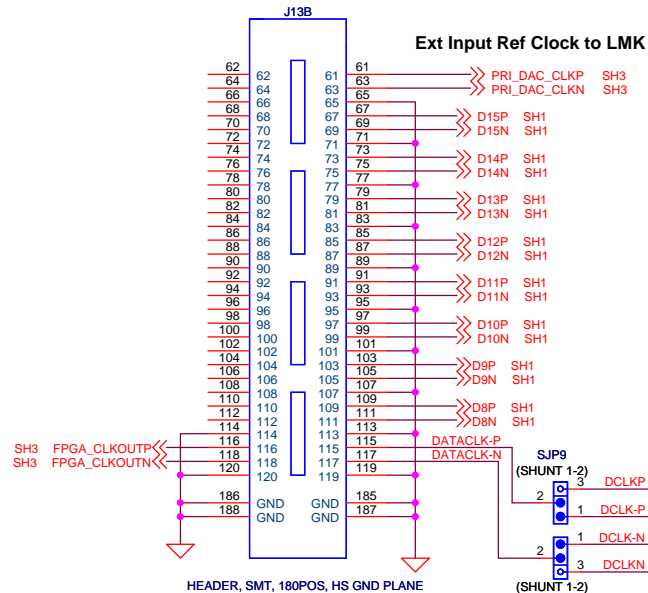
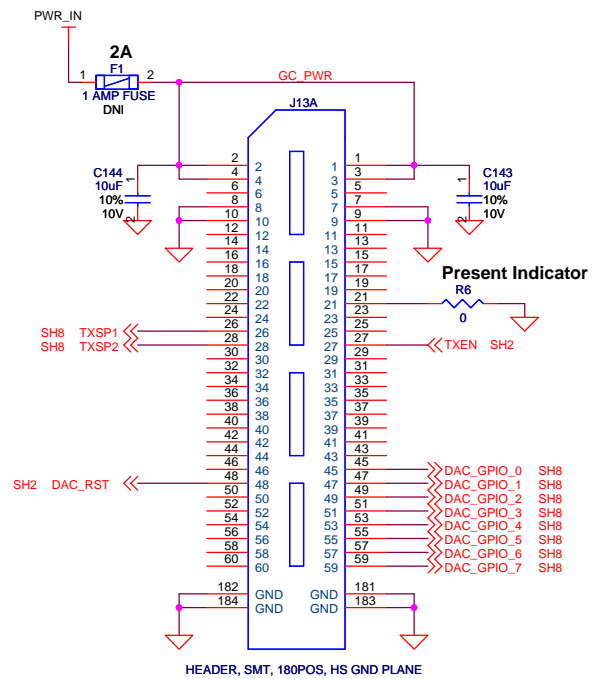






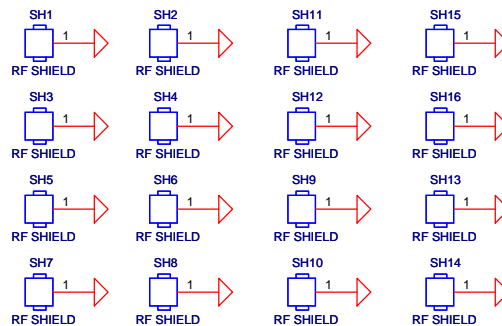
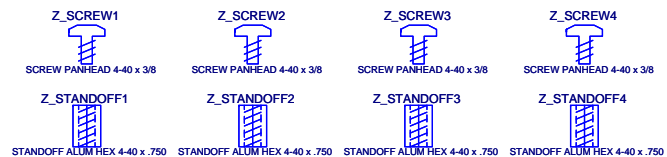


Title				
<b>TSW308X EVM</b>				
Size	Document Number			Rev
<b>B</b>	<b>TX AMPLIFIER AND ATTENUATORS</b>			<b>B</b>
Date:	Friday, October 07, 2011	Sheet	6 of 9	



\*\*\*DCLKP/N are topside traces

DCLKP/N traces on the bottom side of board are 2" longer than DCLK-P/N traces on top side.



<b>TSW308X EVM</b>		
<b>Size</b> B	Document Number <b>INTERFACE</b>	Rev <b>B</b>
Date: Friday, October 07, 2011	Sheet 7 of 9	

