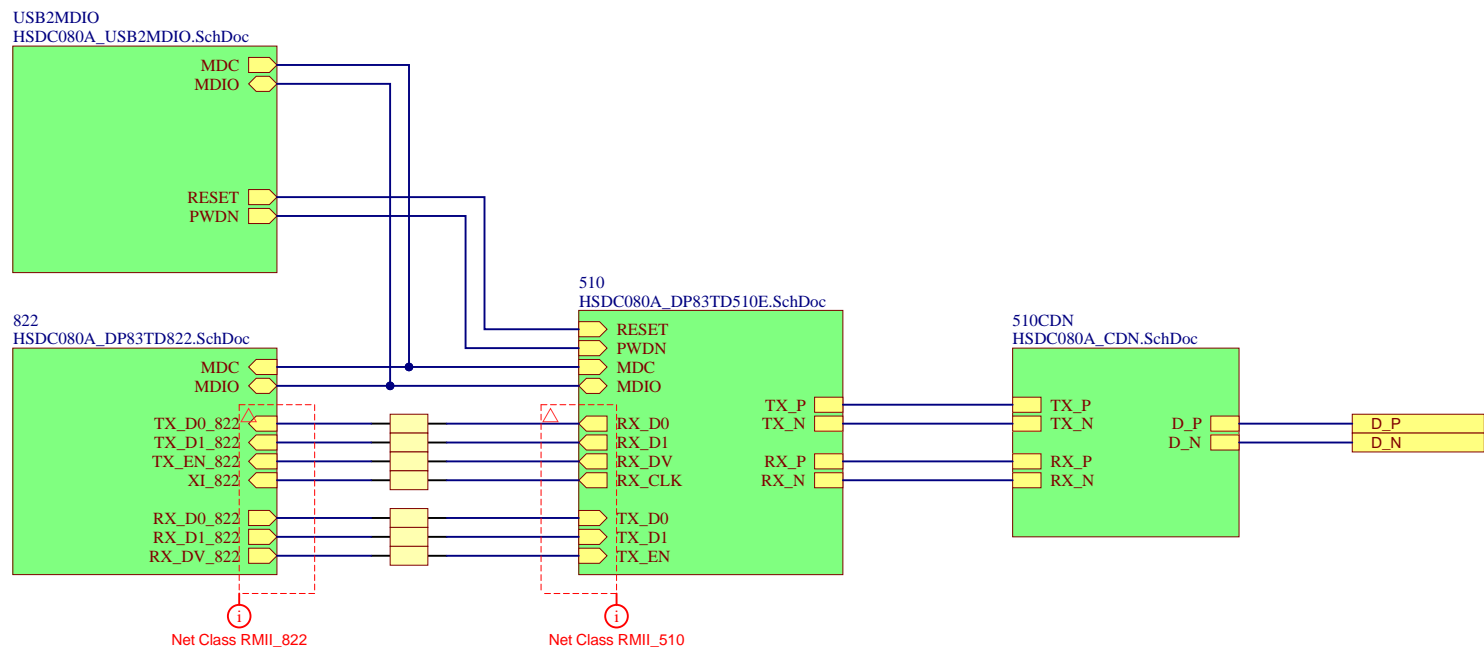
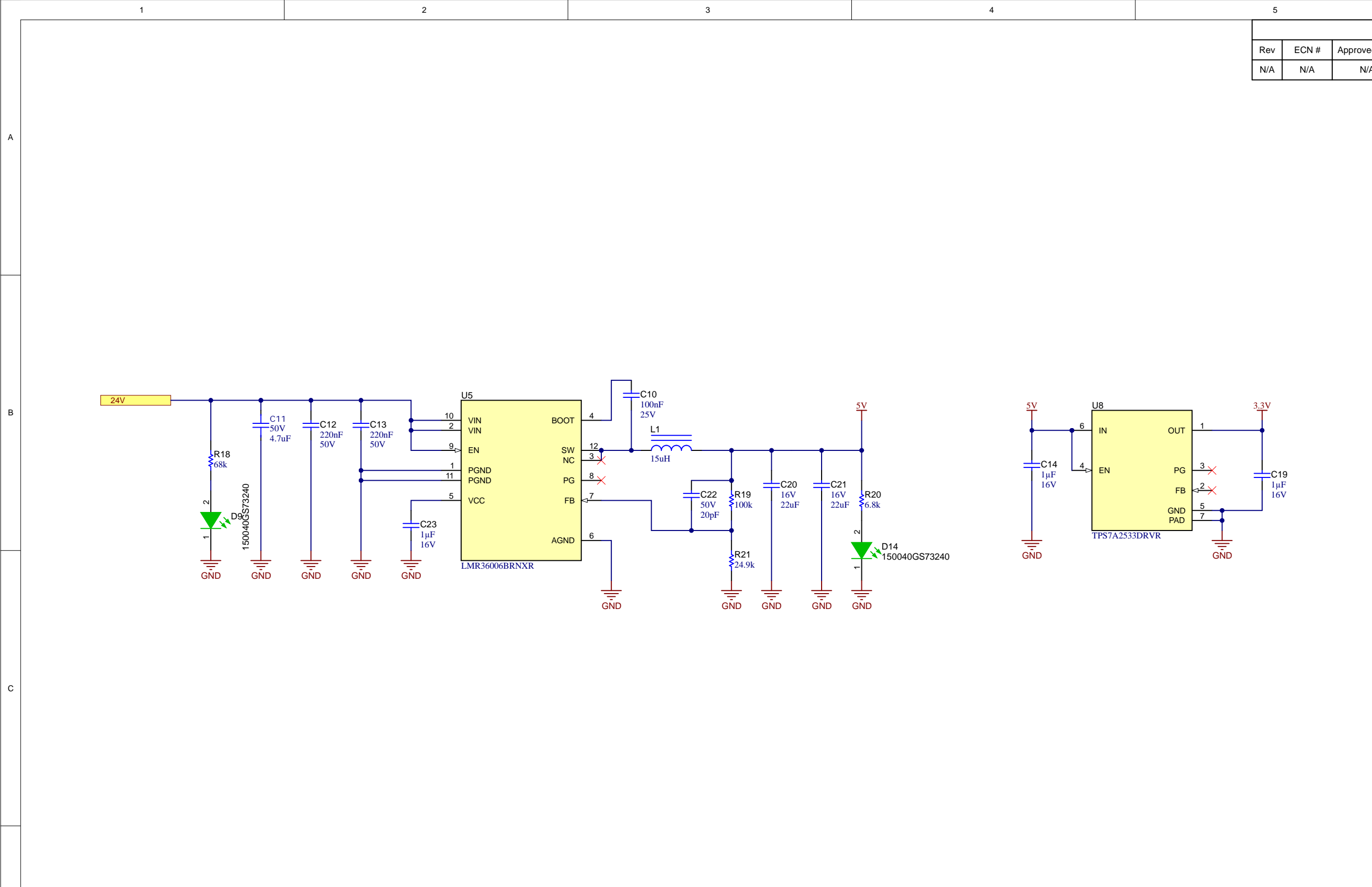


A

B

C



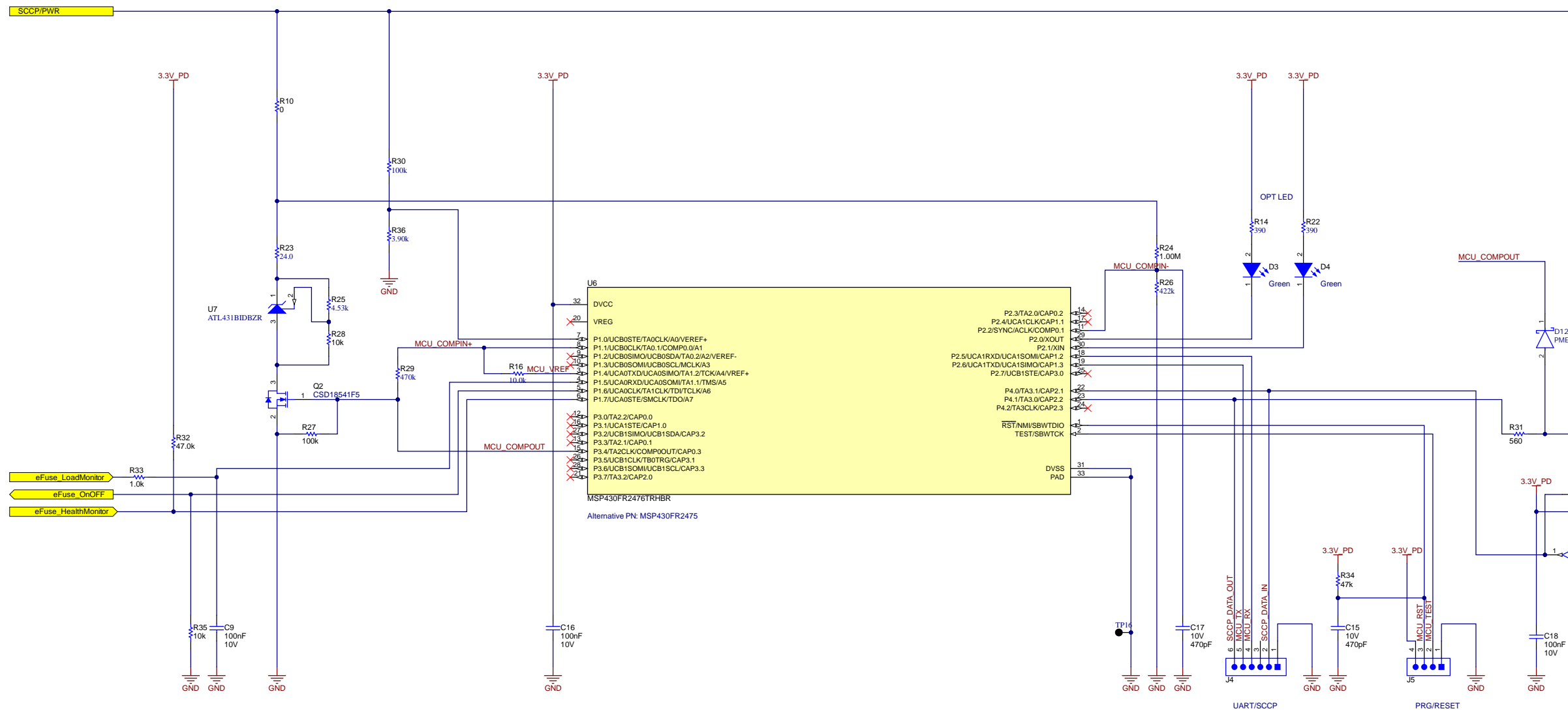


MSP430 MCU SCCP/VID

A

B

C



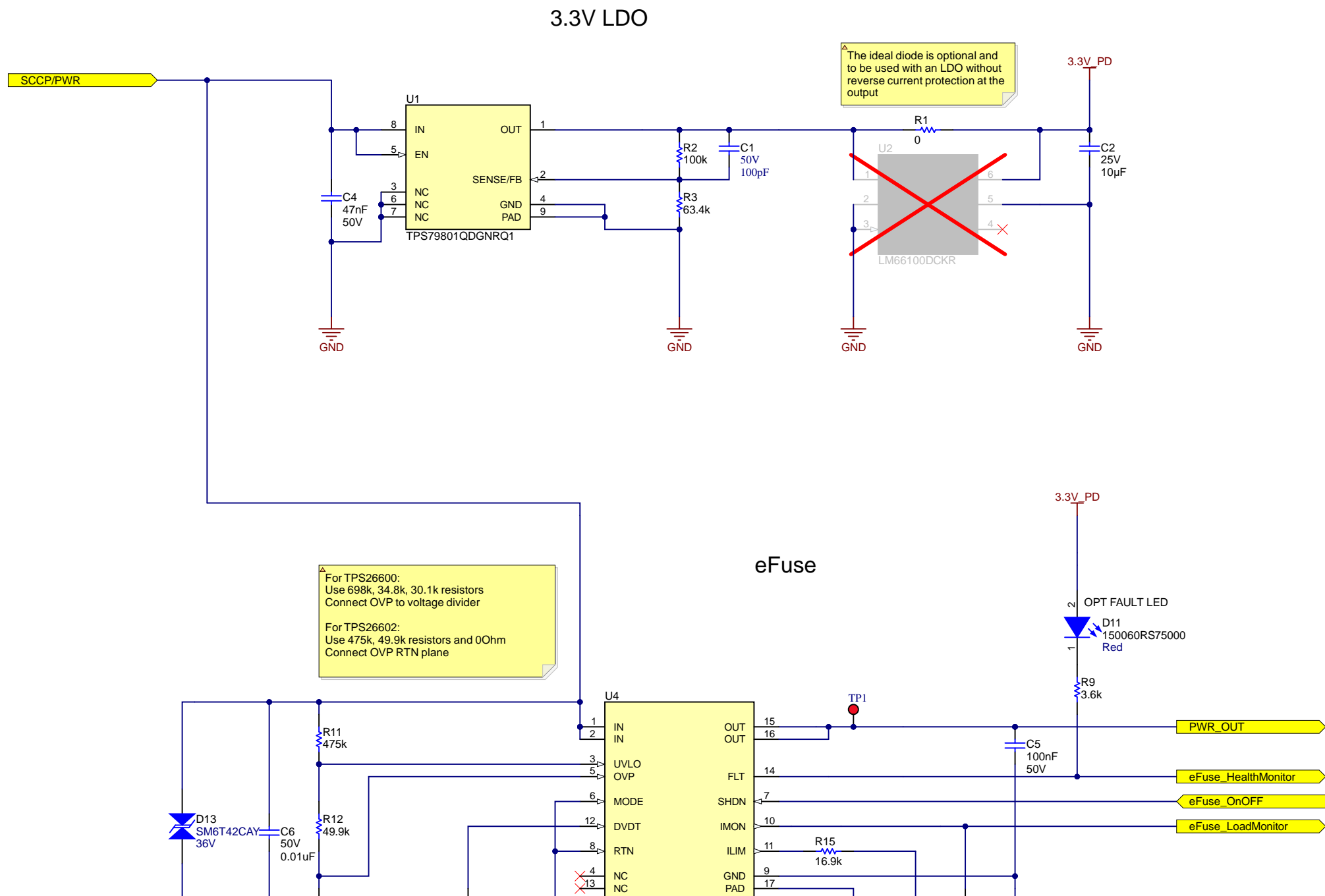
C

Coupling / Decoupling

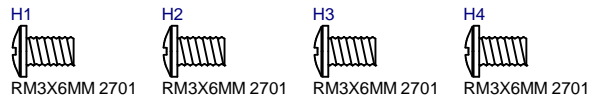
A

B

C



A



PCB Number: PoDL-PD
PCB Rev: E2

PCB
LOGO
Texas Instruments



PCB
LOGO
FCC disclaimer

PCB
LOGO
WEEE logo

B

LBL1

PCB Label

THT-14-423-10
Size: 0.65" x 0.20 "

ZZ1

Label Assembly Note

This Assembly Note is for PCB labels only

[illegible]

C

ZZ2

Assembly Note

Assembly Note
These assemblies are ESD sensitive, ESD precautions shall be observed.

ZZ3

Assembly Note

Assembly Note
These assemblies must be clean and free from flux and all contaminants. Use of no clean flux is not acceptable.

ZZ4

Assembly Note

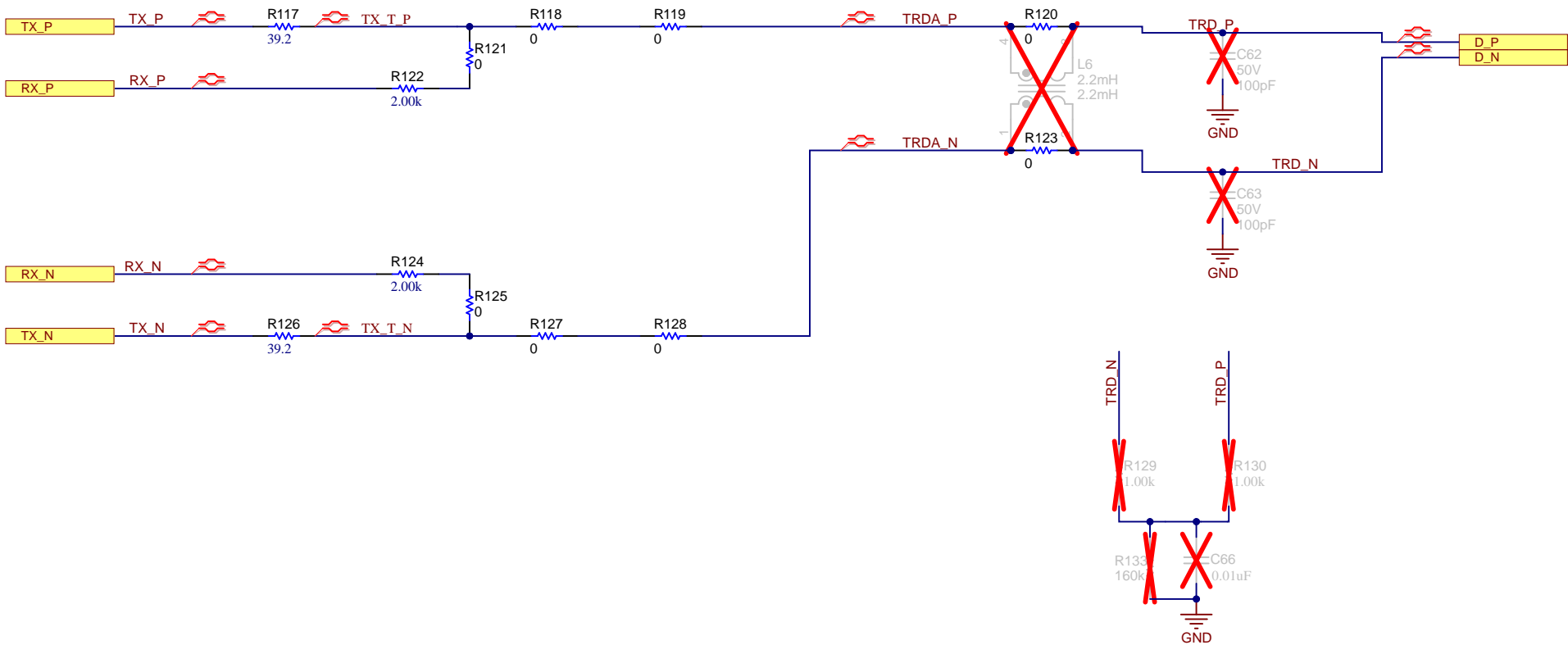
Assembly Note
These assemblies must comply with workmanship standards IPC-A-610 Class 2, unless otherwise specified.

A

B

C

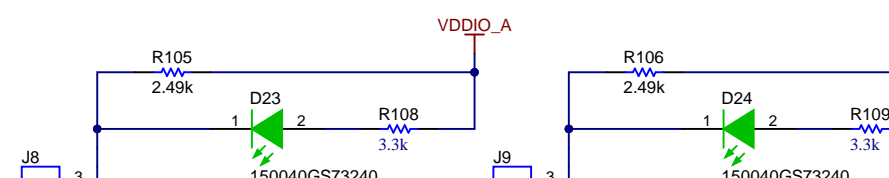
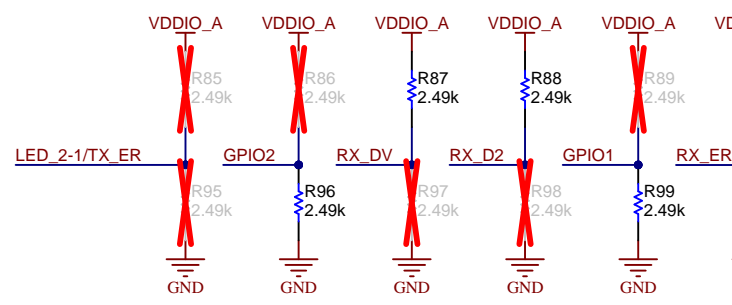
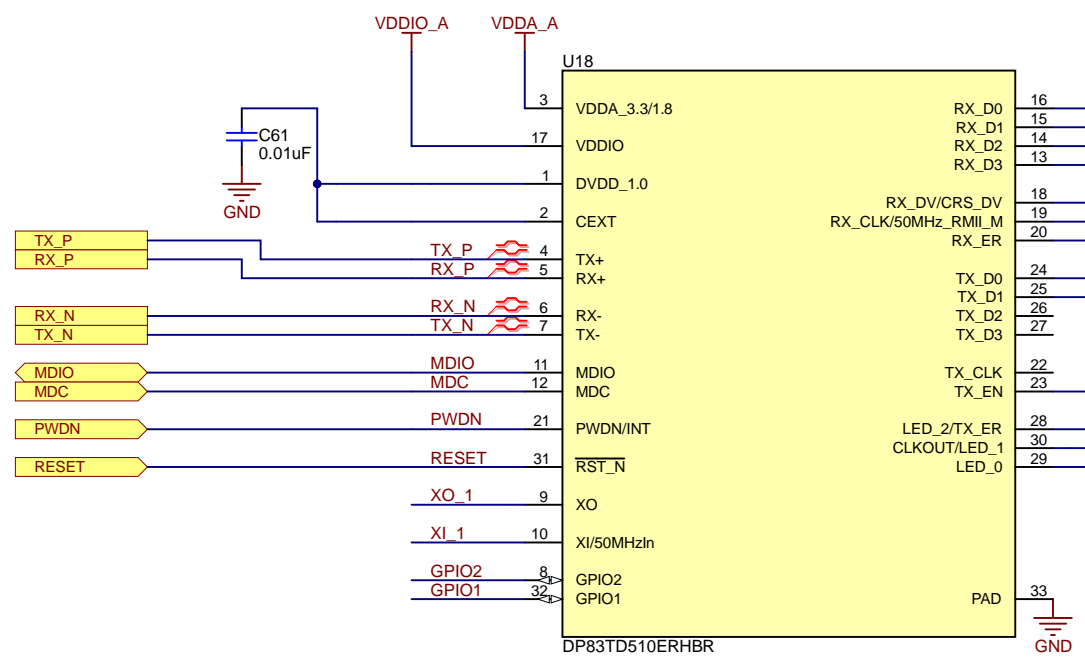
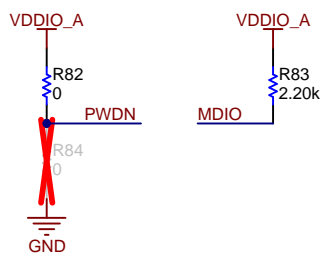
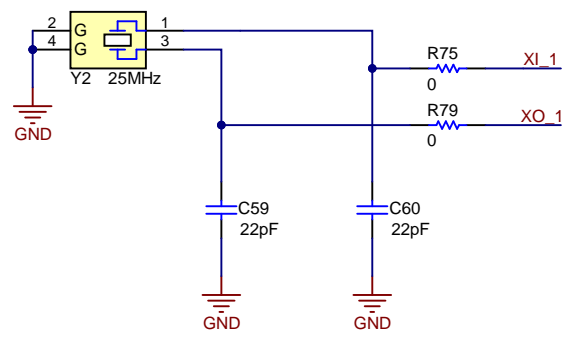
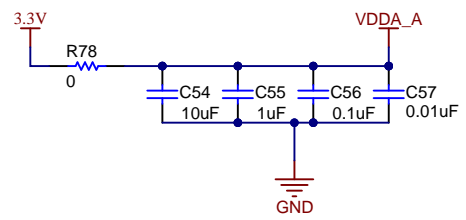
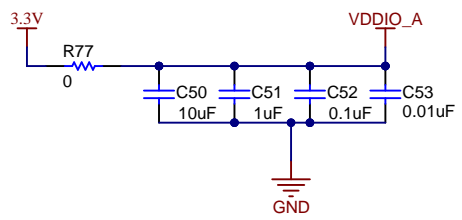
R117 and R126 assembled wrong value, assemble 39 ohm



A

B

C



A

B

C

