

Layer Stack Up Detail for: SU601130A.PcbDoc

Layer Name	Material	Color	Thickness	Isotropic Weight	Isotropic Interfacial	Isotropic Core	Isotropic Prepreg
Top Solder Mask	(.675)		0.4mil	Solder Resist	3.50		
Top Layer	(.075)	2.Bel	[6.dnl]	FR-4	4.80	Core	
Middle Layer 2	(.05)	2.Bel	[6.dnl]	FR-4	4.80	Prepreg	
Middle Layer 3	(.02)	2.Bel	[6.dnl]	FR-4	4.80		
Bottom Layer	(.085)	2.Bel	[6.dnl]	FR-4	4.80	Core	
Bottom Solder Mask	(.085)		0.4mil	Solder Resist	3.50		

DESIGN INFORMATION

BOARD SIZE (REFER ALSO ARRAY/PANEL PROFILING INFORMATION)

3450MIL X 5000MIL

Number of Layers : 4

MIN. TRACK WIDTH: 8 MIL

MIN. CLEARANCE: 8 MIL

MIN. VIA PAD SIZE: 24 MIL

MINIMUM ANNULAR RING 0.05mm (2MIL) EXTERNAL

PER IPC-D-275 CLASS 2 LEVEL C

REGISTRATION TOLERANCES: METAL +/- .5 MIL, HOLES +/- .3 MIL

MATERIAL:

FR-408 FR-4 High Tg OTHER

THICKNESS: 62 MIL (1.6mm) +/-10% OTHER

TOLERANCE: ANSI IPC-6012 TYPE 3 CLASS 2 OTHER +/-

BOW & TWIST: ANSI IPC-6012 TYPE 3 CLASS 2 OTHER +/-

COPPER THICKNESS (FINISHED):

OUTER: 1.4MIL (1oz) 2MIL (1.4oz) 2.8MIL (2oz)

INNER SIGNAL: 1.4MIL (1oz) 2.8MIL (2oz) N/A

DRILLING:

REFERENCE: AS SHOWN NC\_DRILL FILES

PTH MIN COPPER THICKNESS: 1MIL OTHER

BOARD FINISH:

SILKSCREEN: TOP BOTTOM

SILKSCREEN COLOR: WHITE OTHER

SOLDER RESIST COLOR: GREEN BLUE OTHER

SURFACE FINISH: IMMERSSION GOLD (ENG) ENERPIG

IMM. TIN/SILVER OR EQUIV OTHER

ARRAY/PANEL: CUT AND TRM PER MECH LAYER 1 N.C. ROUTE V. SCORE

CERTIFICATION: MATERIALS AND WORKMANSHIP FOR ALL PCBs TO MEET OR EXCEED THE REQUIREMENTS OF:

ANSI IPC-A-600F CLASS -> 1 2 3

UL 94V-0 RoHS OTHER PER ORDER

ADDITIONAL REQUIREMENTS:

MICROSECTION: YES

BARE BOARD ELEC. TEST: NONE REQUIRED PER ORDER

MANUFACTURER'S UL: RAL METAL SILK

TEXAS INSTRUMENTS

PROJECT TITLE: LM5175EUM

DESIGNED FOR: Public Release

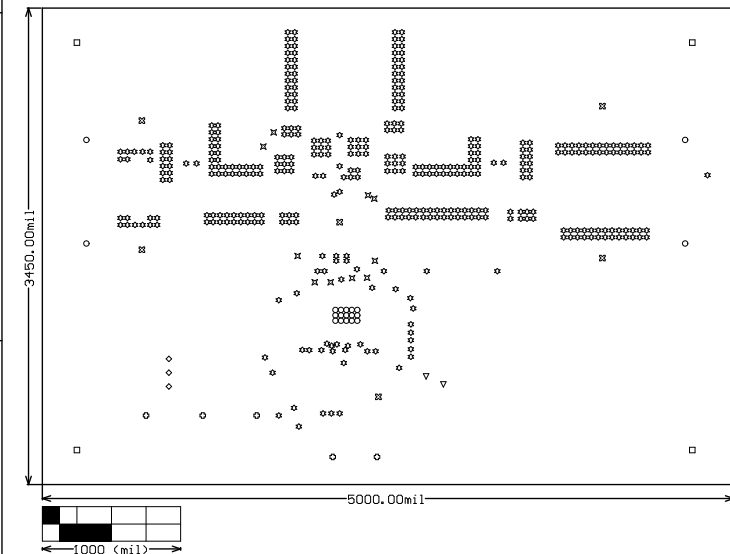
FILE NAME: SU601130A.PcbDoc

ENGINEER: a0414061 LAYOUT BY: a0413446

SCALE: 0.72 ALTUM DESIGNER VERSION: 14.3.16.37051

Symbol	Hit Count	Tool Size	Plated	Hole Type
o	15	7.874mil (0.2mm)	PTH	Round
*	371	10mil (0.254mm)	PTH	Round
x	10	20mil (0.508mm)	PTH	Round
v	2	24mil (0.61mm)	PTH	Round
◇	3	40mil (1.016mm)	PTH	Round
⊞	6	52mil (1.321mm)	PTH	Round
o	5	63mil (1.6mm)	PTH	Round
□	4	125.984mil (3.2mm)	PTH	Round
o	4	270mil (6.858mm)	PTH	Round
420 Total				

Drill Table



ALL ARTWORK VIEWED FROM TOP SIDE	BOARD #: SU601130	REV: A	SUN REV: Not In VersionControl
LAYER NAME = <del>060854</del> 060854			
PLOT NAME = Fabrication Drawing	GENERATED : 2/26/2015 9:35:38 AM	TEXAS INSTRUMENTS	

Texas Instruments (TI) and/or its licensors do not warrant the accuracy or completeness of this specification or any information contained therein. TI and/or its licensors do not warrant that this design will meet the specifications, will be suitable for your application or fit for any particular purpose, or will operate in an implementation. TI and/or its licensors do not warrant that the design is production worthy. You should completely validate and test your design implementation to confirm the system functionality for your application.