



S1L50282F23K100 LCD Controller Daughter Card for the DM642 Evaluation Module

Table of Contents

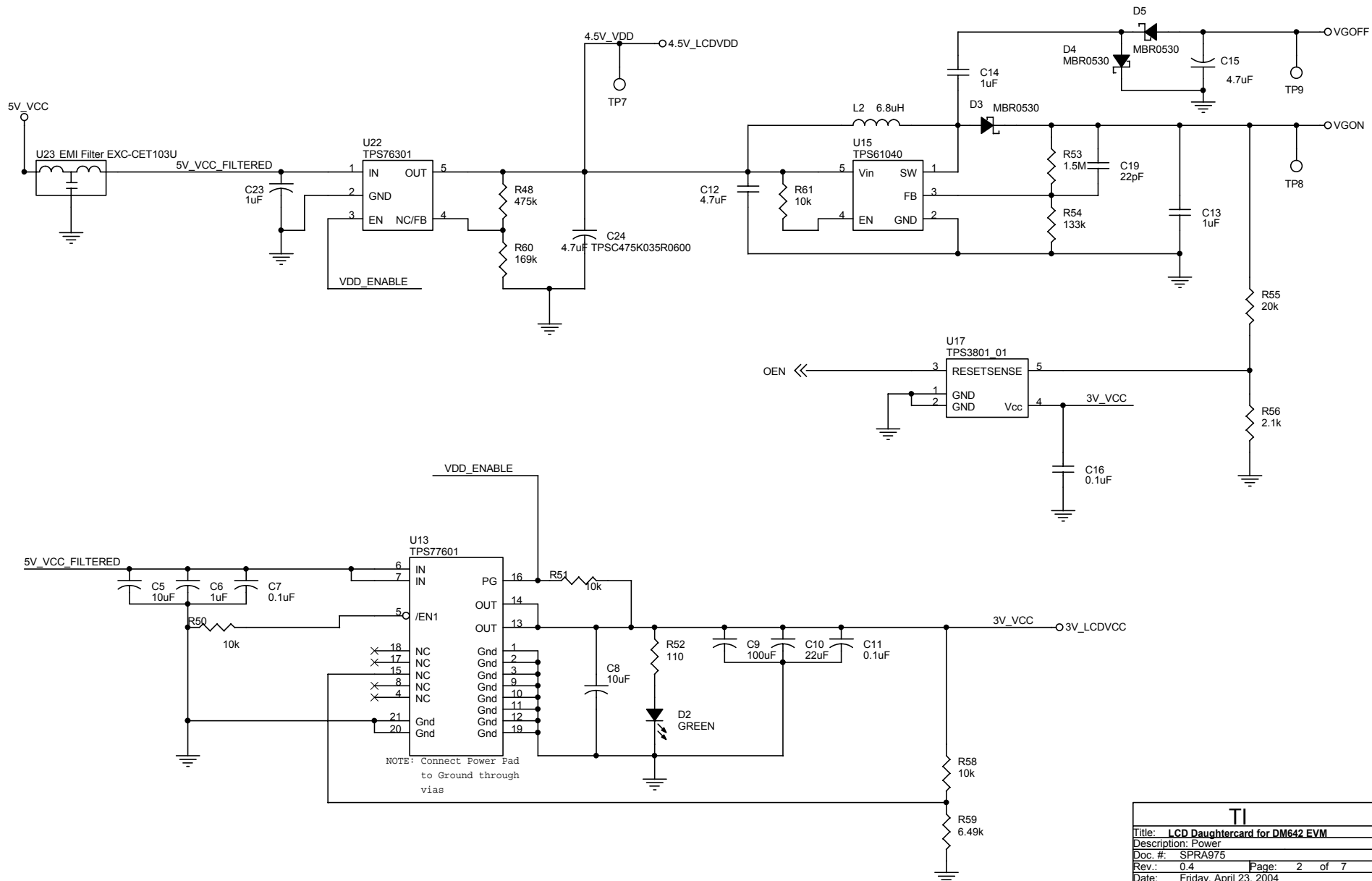
- 1) Title, Contents, Revision History, and Notes
- 2) Power Supply
- 3) LCD Backlight Circuit
- 4) DM642 EVM Daughter Card Connectors
- 5) Video Port Clock
- 6) Video Port to S1L50282F23K100 LCD Controller
- 7) Power Supply Decoupling

Notes:

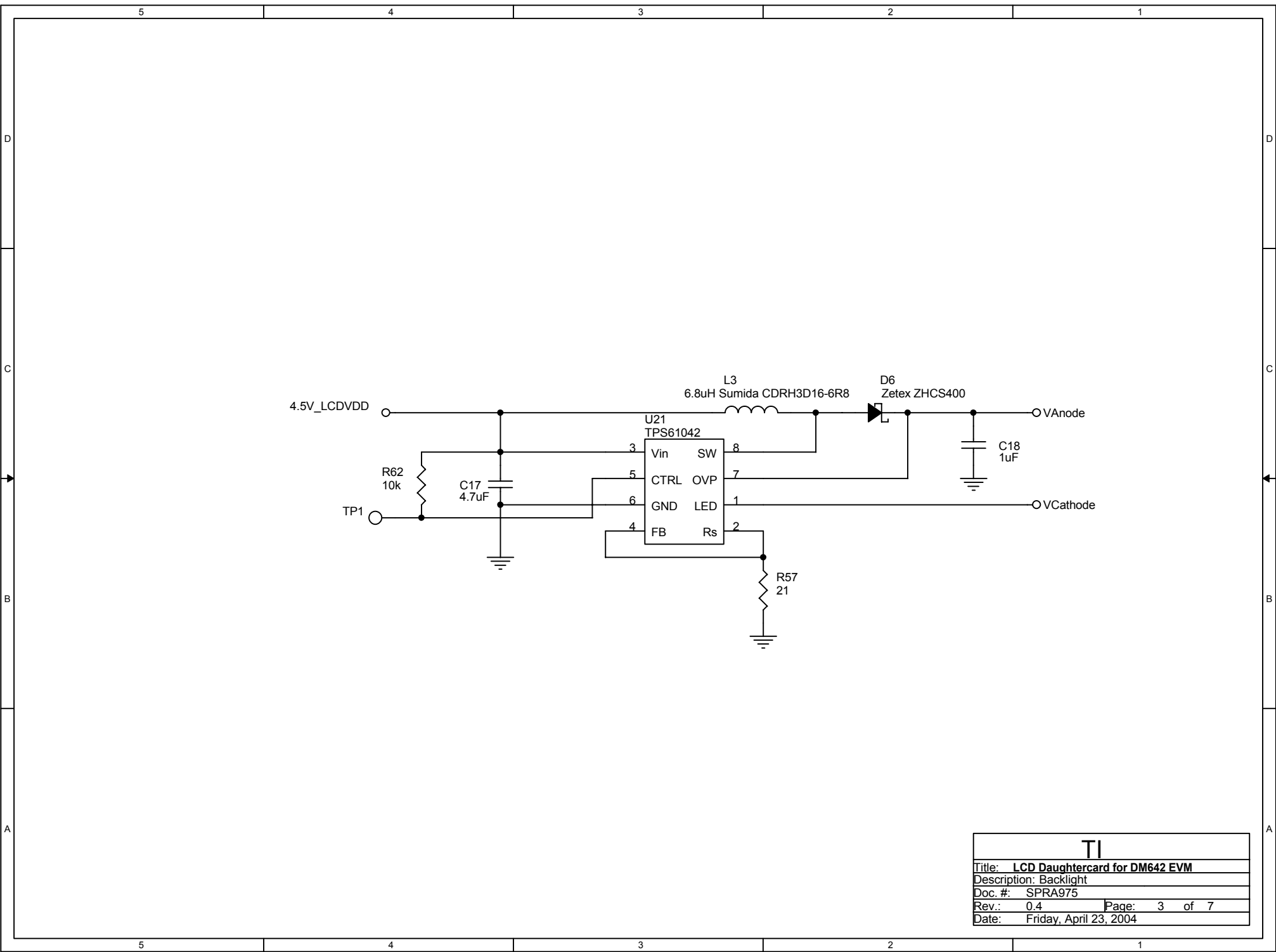
- 1) RESISTANCE VALUES ARE IN OHMS
- 2) CAPACITANCE VALUES ARE IN MICROFARADS
- 3) BOARD PROPERTIES
 - A. ROUTE TO WITHIN 10% OF MANHATTAN DISTANCE PARTS SHALL NOT USE THERMAL RELIEFS
 - B. 50 OHM MATCHED IMPEDANCE FOR DIGITAL LINES. 75 OHM MATCHED IMPEDANCE FOR ANALOG LINES
 - C. OUTER LAYERS 0.5 OZ CU & 0.5 OZ AU PLATING
 - D. INNER LAYERS 1.0 OZ CU
 - E. FR4 BOARD MATERIAL
 - F. MINIMUM TRACE WIDTH/SPACING 4 MILS
 - G. MINIMUM VIA SIZE 10/19 MILS
 - H. APPROXIMATE BOARD SIZE 5.125 x 3.125 INCHES
 - I. U13 HAS A PowerPAD THAT IS CONNECTED THROUGH PIN 21
 - J. THERMAL RELIEFS SHOULD NOT BE USED

Revision History			
Rev.#	Description	Date	Approved
0.1	Preliminary Schematics Completed	10/20/2003	AAS
0.2	Changed R57 Value, Added R61 and R62, Deleted L1	11/25/2003	AAS
0.3	Assigned part numbers to diodes in power supply design.	12/01/2003	AAS
0.4	Switched labeling of pins 4 and 5 on TPS76301, connected pin 2 on TPS61040 to ground, changed C15 to be a polar Cap.	02/27/2004	AAS

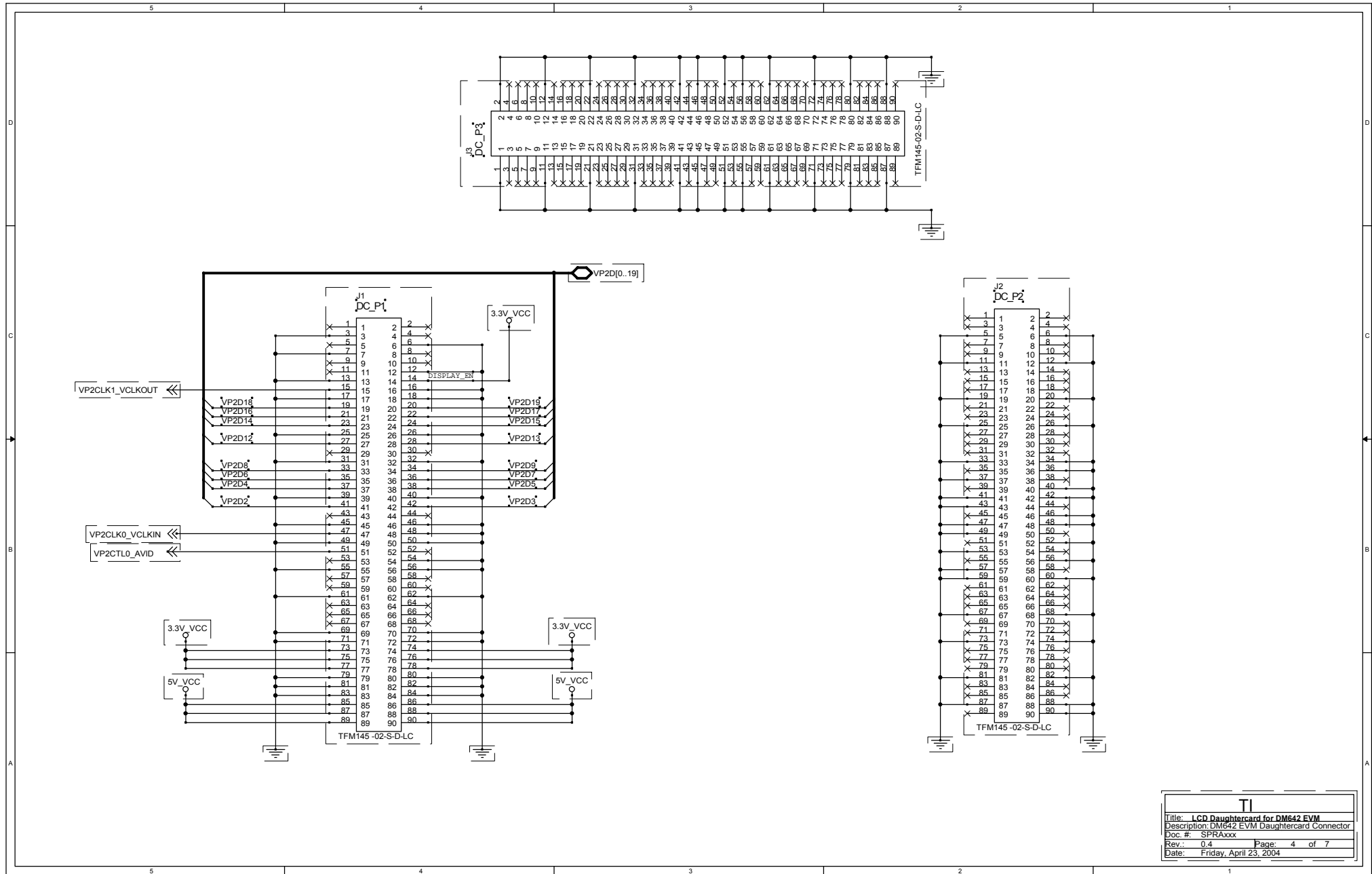
TI	
Title: LCD Daughtercard for DM642 EVM	
Description: Title	
Doc. #: SPRA975	
Rev.: 0.4	Page: 1 of 7
Date: Friday, April 23, 2004	

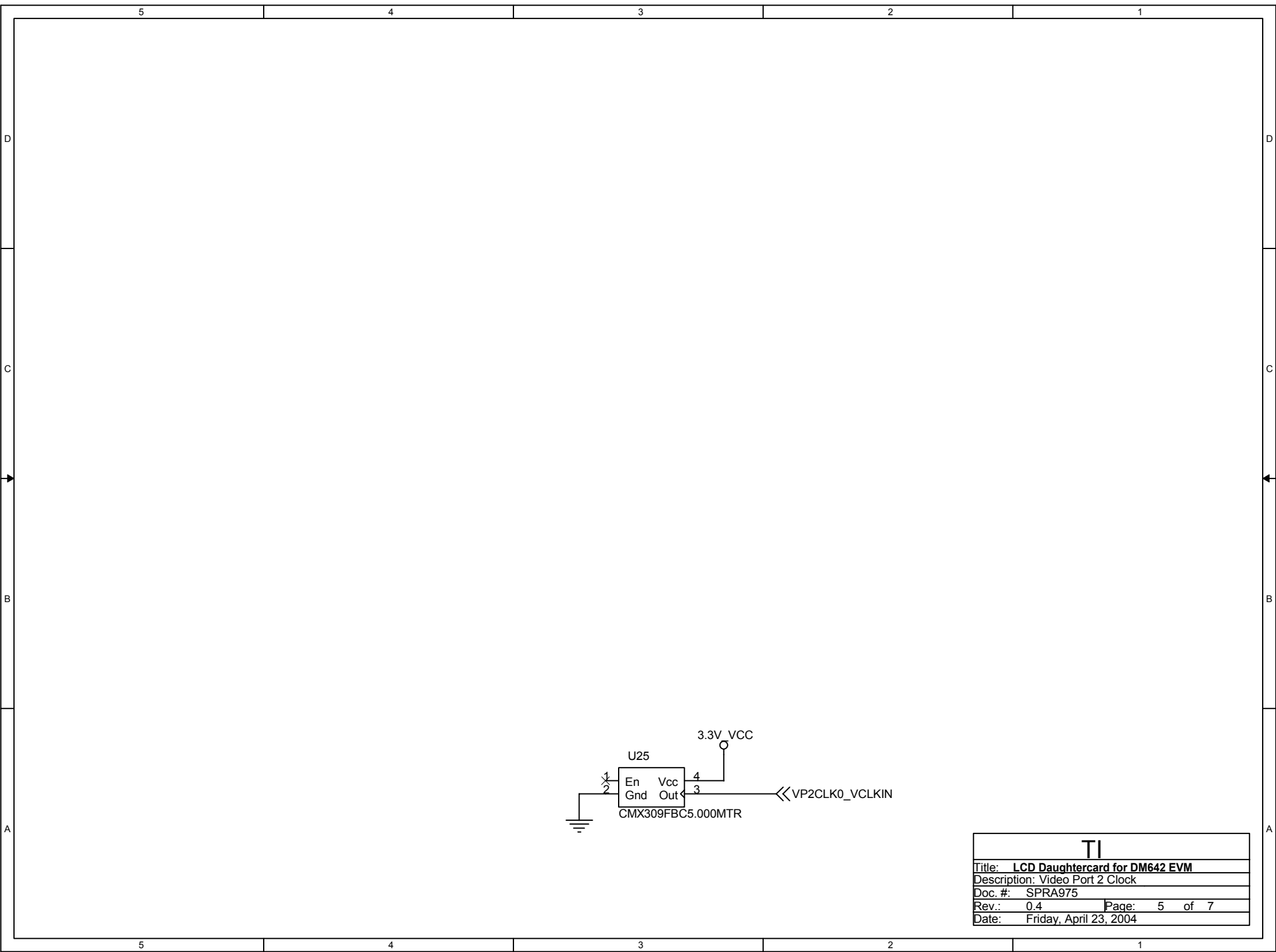


TI			
Title: LCD Daughtercard for DM642 EVM			
Description: Power			
Doc. #: SPRA975			
Rev.: 0.4		Page: 2 of 7	
Date: Friday, April 23, 2004			



TI			
Title: LCD Daughtercard for DM642 EVM			
Description: Backlight			
Doc. #: SPRA975			
Rev.: 0.4		Page: 3 of 7	
Date: Friday, April 23, 2004			





TI	
Title: LCD Daughtercard for DM642 EVM	
Description: Video Port 2 Clock	
Doc. #: SPRA975	
Rev.: 0.4	Page: 5 of 7
Date: Friday, April 23, 2004	

