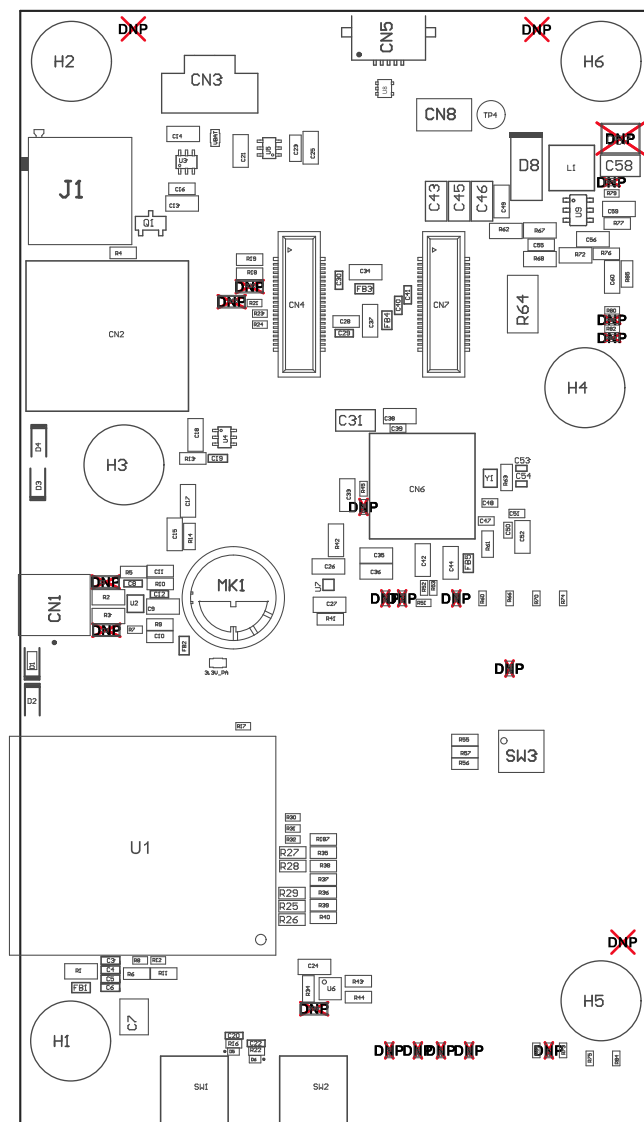


Z24 ■ Install label in silkscreened box after final wash. Text shall be 8 pt font. Text shall be per the Label Table in the PDF schematic.

Z21 ■ These assemblies are ESD sensitive, ESD precautions shall be observed.

Z22 ■ These assemblies must be clean and free from flux and all contaminants. Use of no clean flux is not acceptable.

Z23 ■ These assemblies must comply with workmanship standards IPC-A-610 Class 2, unless otherwise specified.



COMPONENTS MARKED 'DNP' SHOULD NOT BE POPULATED.
ASSEMBLY VARIANT: 001

PCB VIEWED FROM TOP SIDE	BOARD #: TIDA-010224	REV:	SUN REV: Not In VersionControl
M5 Assembly Top	TID #: TIDA-010224		
PLOT NAME = Top Assembly Drawing	GENERATED : 5/6/2021 8:57:23 PM		TEXAS INSTRUMENTS

