

Texas Instruments and/or its licensors do not warrant the accuracy or completeness of this specification or any information contained therein. Texas Instruments and/or its licensors do not warrant that this design will meet the specifications, will be suitable for your application or fit for any particular purpose, or will operate in an implementation. Texas Instruments and/or its licensors do not warrant that the design is production worthy. You should completely validate and test your design implementation to confirm the system functionality for your application.

Orderable: ChangeMe in variant	Designed for: Public Release	Mod. Date: 8/20/2021
TID #: N/A	Project Title: Change in menu Project	Project Options: Parameter
Number: PMP22650	Rev: E2	Sheet Title: Change in menu Project
SVN Rev: fd1b12a6a3b090bc7ea460e657a780a60040	Locally Modified: Locally Modified	Sheet: 1 of 16
Drawn By: Enter name of project lead	File: PMP22650 Power Tree.SchDoc	Size: B
Engineer: Enter name of project lead	Contact: http://www.ti.com/support	

PCB Number: PMP22650
PCB Rev: E2

PCB
LOGO
Texas Instruments



PCB
LOGO
FCC disclaimer

PCB
LOGO
WEEE logo



DANGER HIGH VOLTAGE



DANGER HIGH VOLTAGE



CAUTION HOT SURFACE



CAUTION HOT SURFACE

LBL1

PCB Label

THT-14-423-10
Size: 0.65" x 0.20 "

ZZ4

Label Assembly Note

This Assembly Note is for PCB labels only

Variant/Label Table	
Variant	Label Text
001	ChangeMe!
002	ChangeMe!

ZZ3

Assembly Note

These assemblies are ESD sensitive, ESD precautions shall be observed.

ZZ2

Assembly Note

These assemblies must be clean and free from flux and all contaminants. Use of no clean flux is not acceptable.

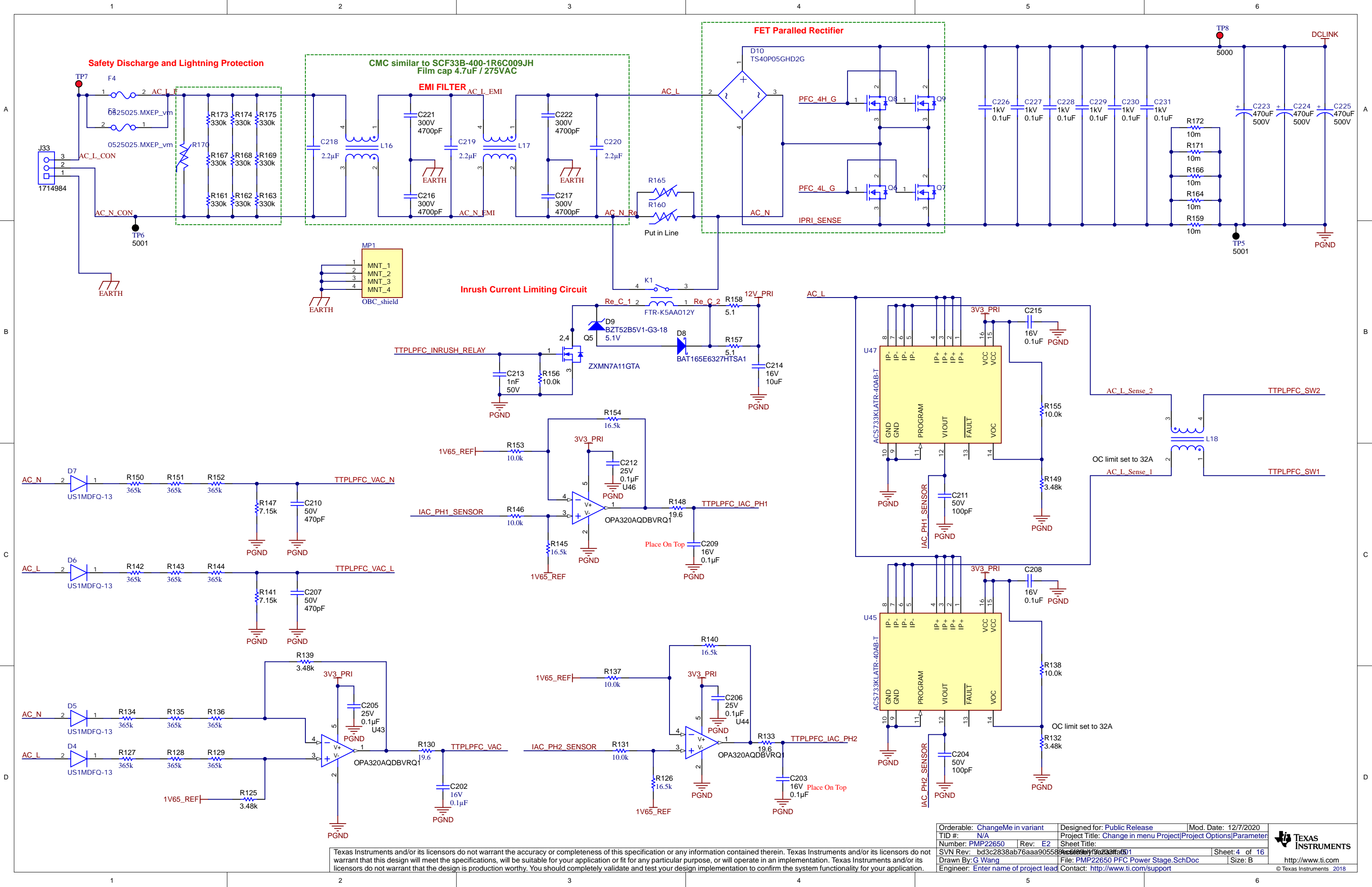
ZZ1

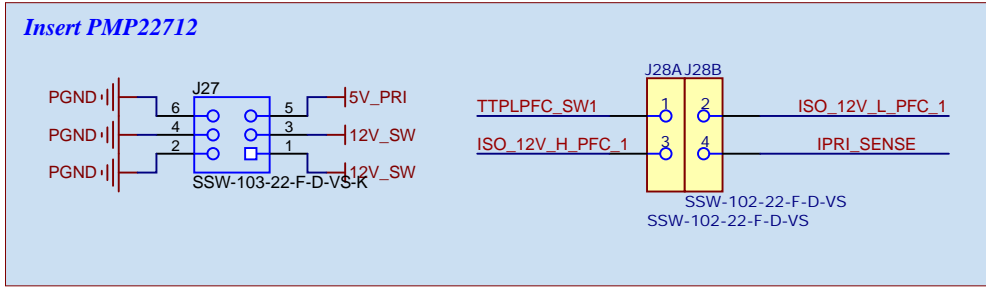
Assembly Note

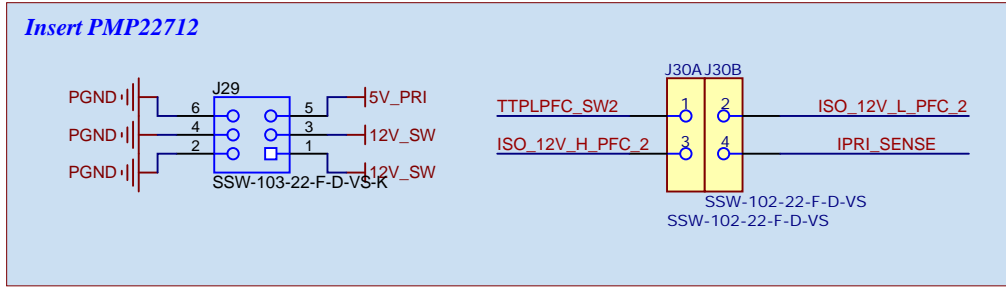
These assemblies must comply with workmanship standards IPC-A-610 Class 2, unless otherwise specified.

Texas Instruments and/or its licensors do not warrant the accuracy or completeness of this specification or any information contained therein. Texas Instruments and/or its licensors do not warrant that this design will meet the specifications, will be suitable for your application or fit for any particular purpose, or will operate in an implementation. Texas Instruments and/or its licensors do not warrant that the design is production worthy. You should completely validate and test your design implementation to confirm the system functionality for your application.

Orderable: ChangeMe in variant		Designed for: Public Release	Mod. Date: 10/20/2020
TID #: N/A		Project Title: Change in menu Project Project Options Parameter	
Number: PMP22650	Rev: E2	Sheet Title:	
SVN Rev: fd1b12a6a3b090bc7ea462a87893b00a610c0		Sheet: 2 of 16	
Drawn By:		File: PMP22650 Hardware.SchDoc	
Engineer: Enter name of project lead		Size: B	
		Contact: http://www.ti.com/support	







A

B

C

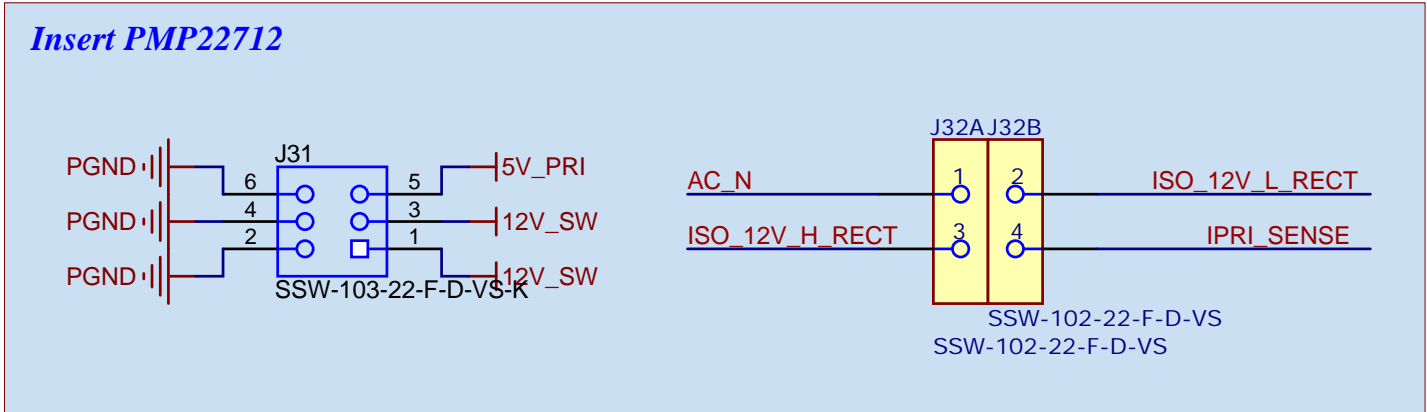
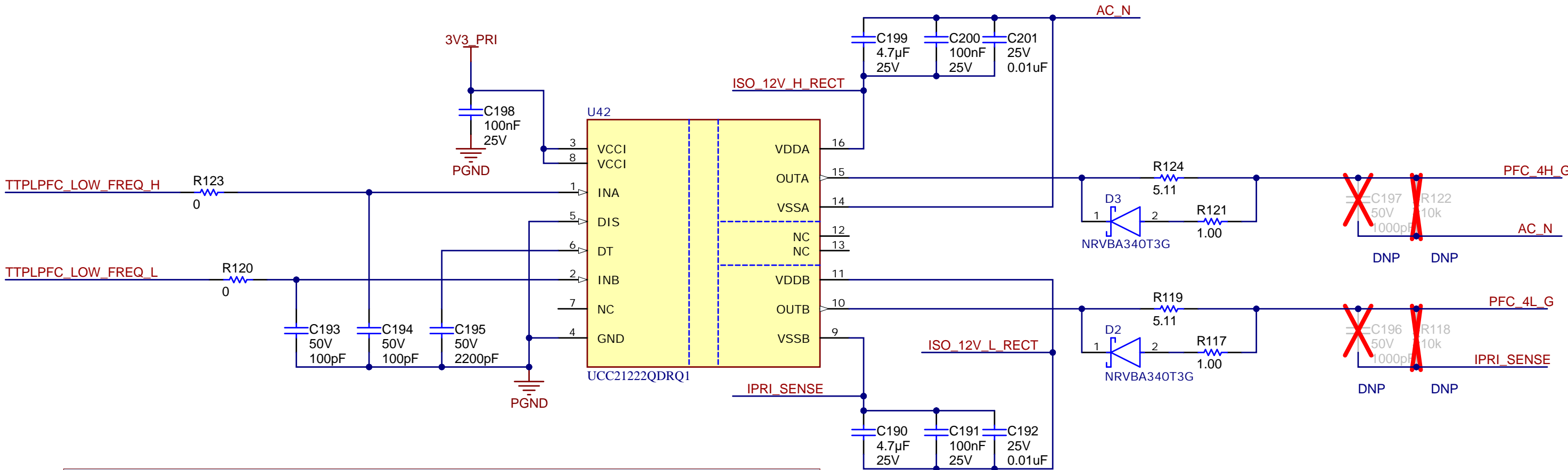
D

A

B

C

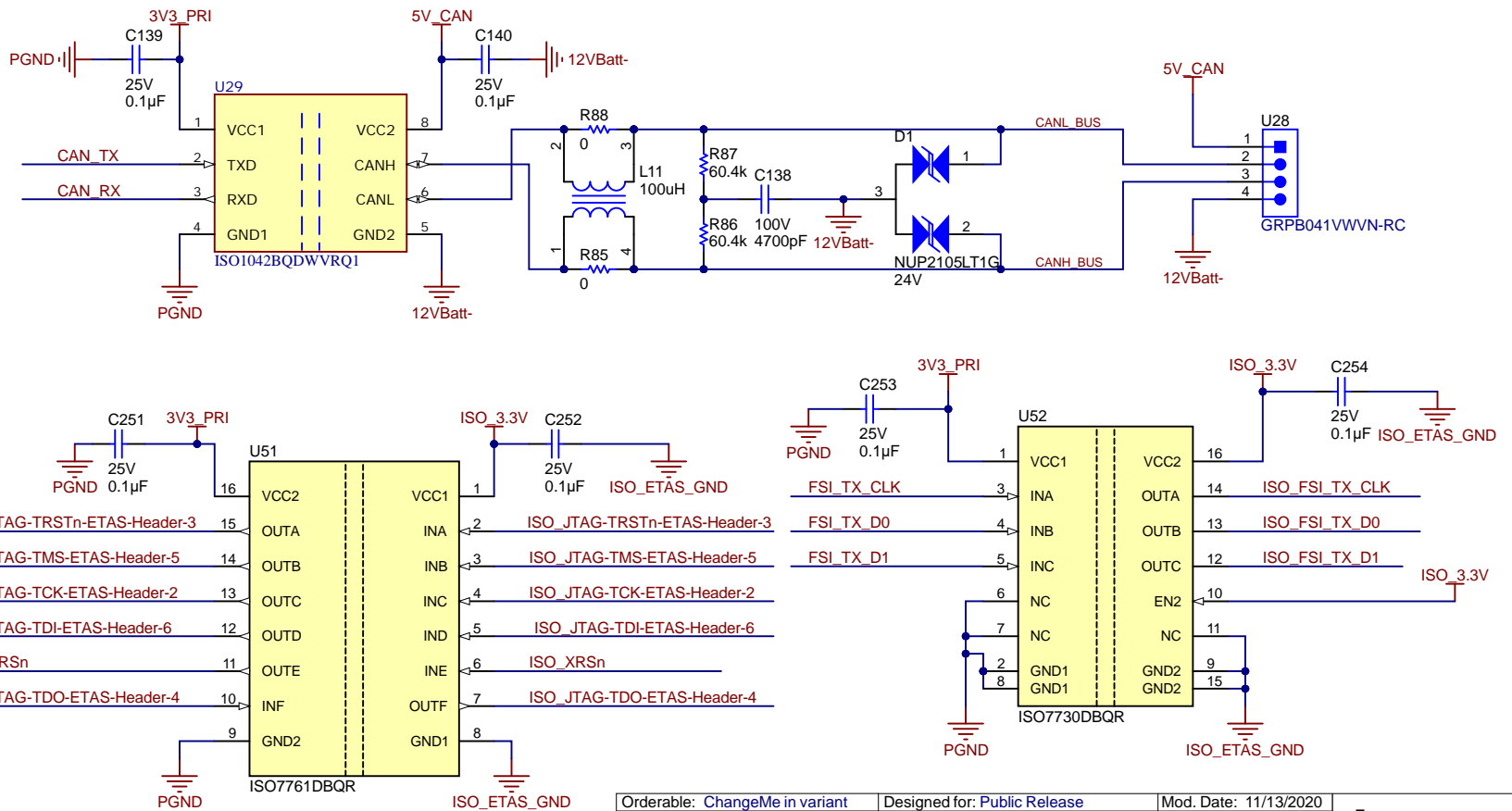
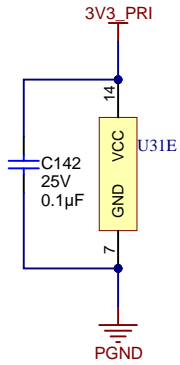
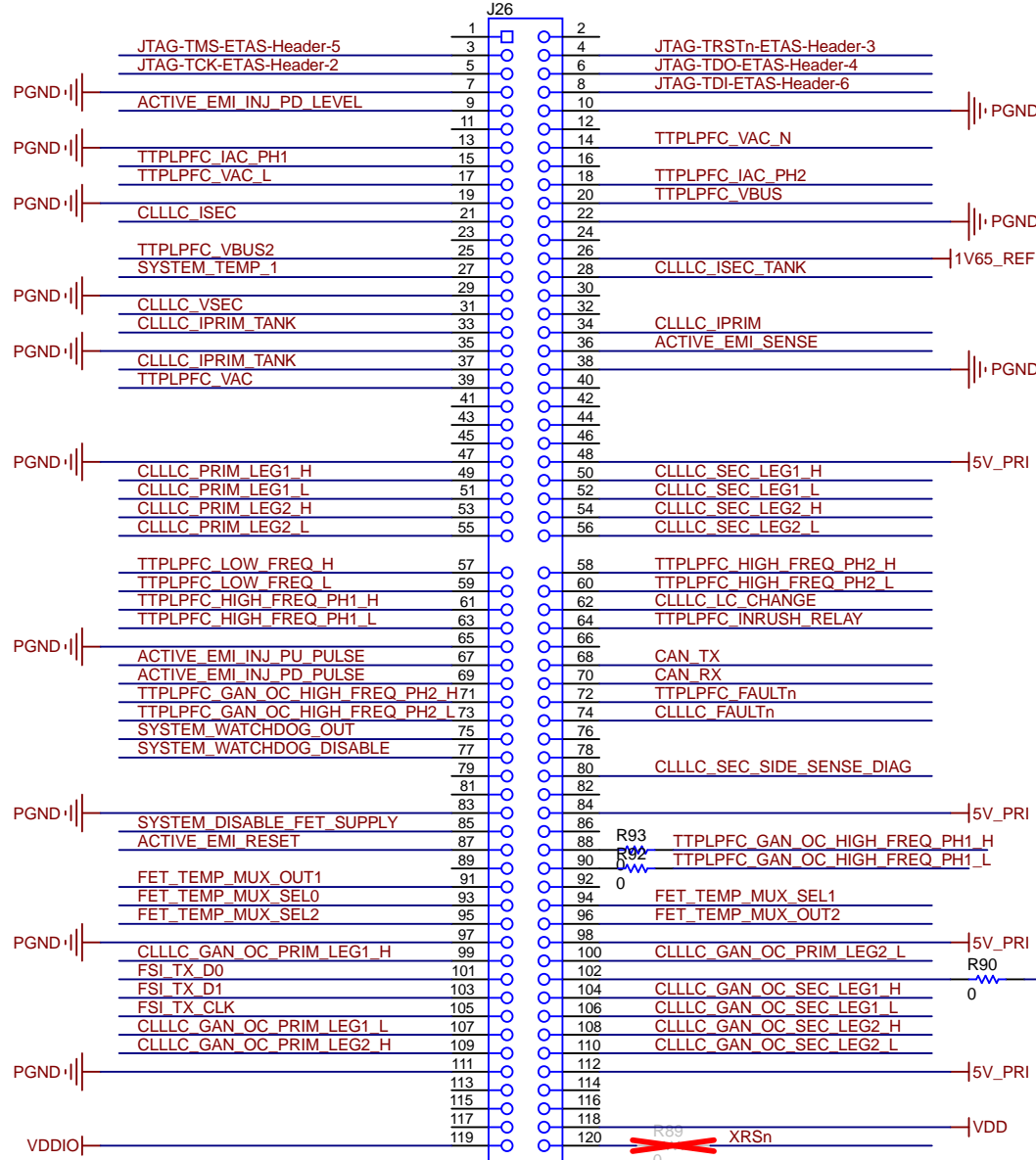
D



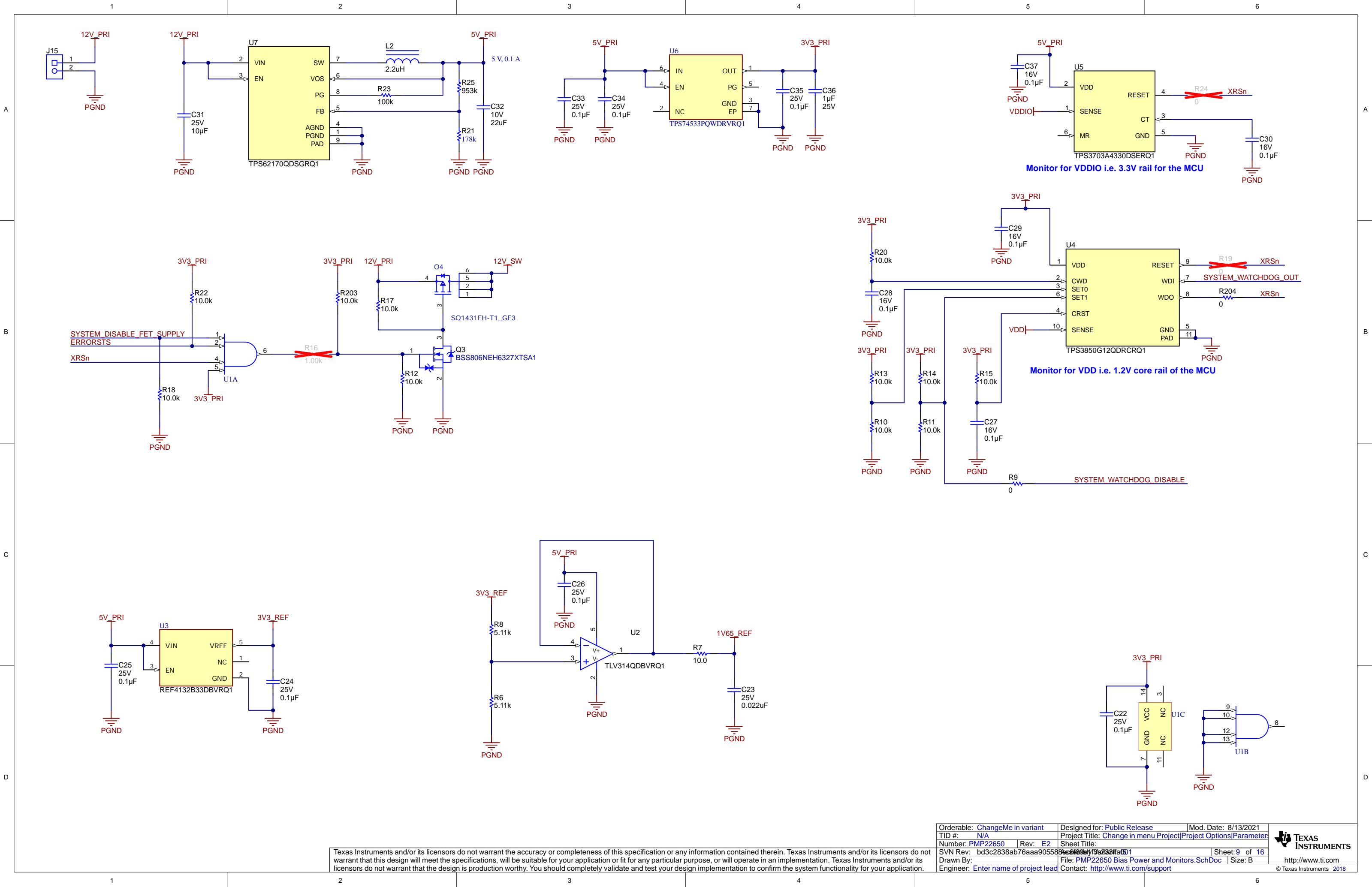
Texas Instruments and/or its licensors do not warrant the accuracy or completeness of this specification or any information contained therein. Texas Instruments and/or its licensors do not warrant that this design will meet the specifications, will be suitable for your application or fit for any particular purpose, or will operate in an implementation. Texas Instruments and/or its licensors do not warrant that the design is production worthy. You should completely validate and test your design implementation to confirm the system functionality for your application.

Orderable: ChangeMe in variant	Designed for: Public Release	Mod. Date: 12/17/2020
TID #: N/A	Project Title: Change in menu Project	Project Options: Parameter
Number: PMP22650	Rev: E2	Sheet Title: PMP22650 PFC LF FET Gate Driver
SVN Rev: c687c552e58c5ad8c73b0286b429c1f9e021	File: PMP22650 PFC LF FET Gate Driver.SchDoc	Size: A4
Drawn By: Enter name of project lead	Contact: http://www.ti.com/support	

Notes: 1. C2000 connector pin definition is different from Samtec definition.

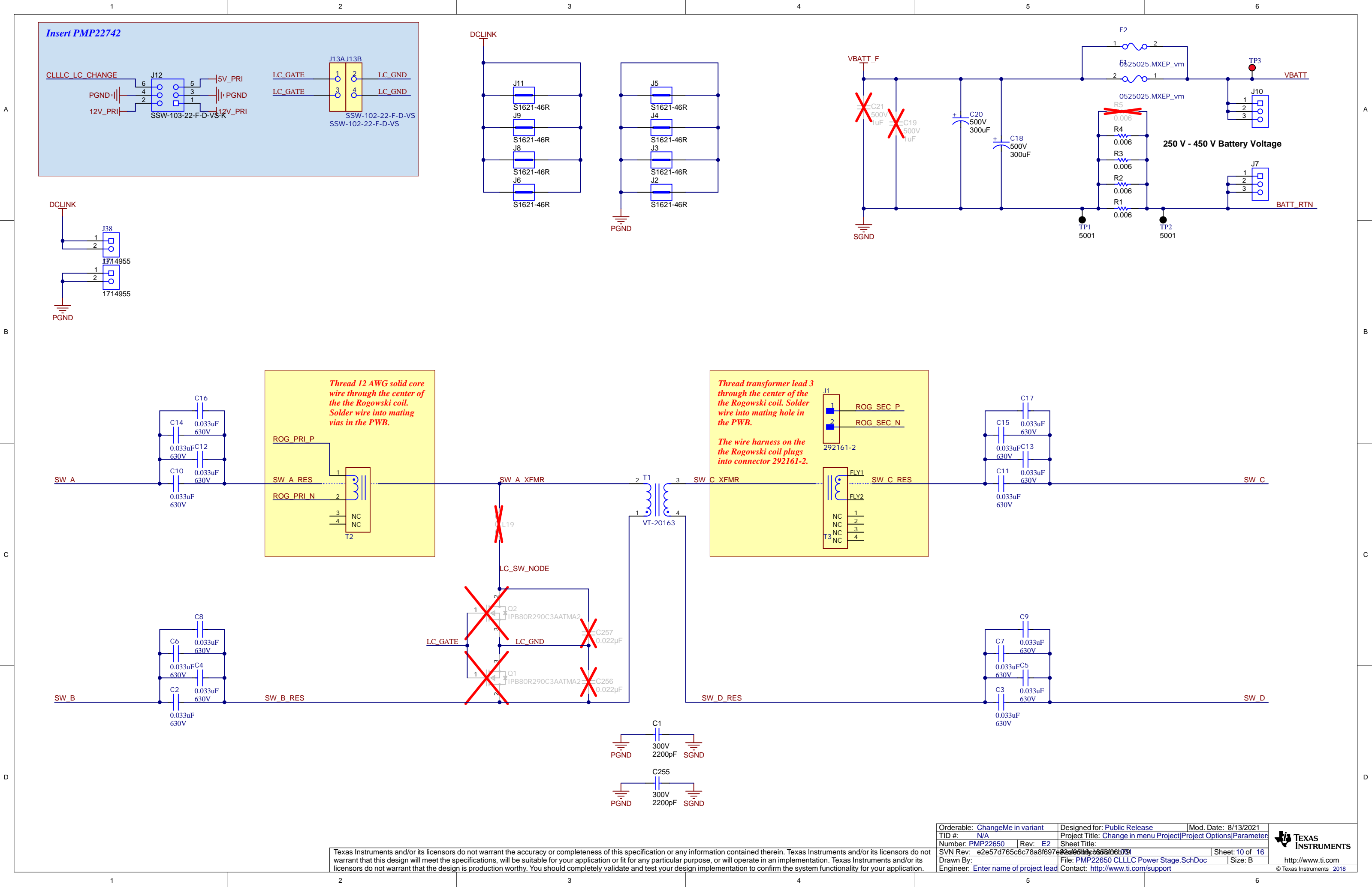


Texas Instruments and/or its licensors do not warrant the accuracy or completeness of this specification or any information contained therein. Texas Instruments and/or its licensors do not warrant that this design will meet the specifications, will be suitable for your application or fit for any particular purpose, or will operate in an implementation. Texas Instruments and/or its licensors do not warrant that the design is production worthy. You should completely validate and test your design implementation to confirm the system functionality for your application.



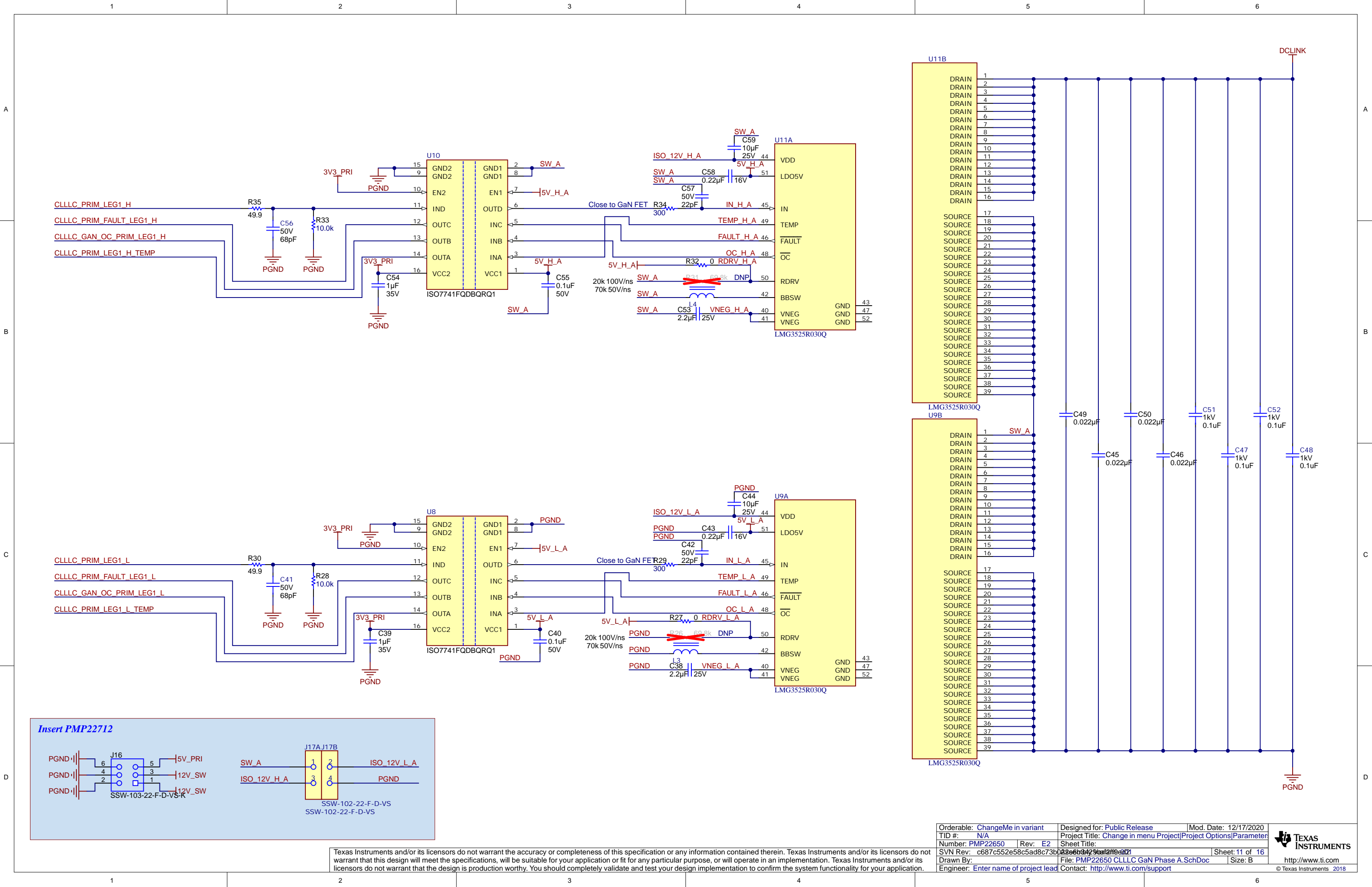
Texas Instruments and/or its licensors do not warrant the accuracy or completeness of this specification or any information contained therein. Texas Instruments and/or its licensors do not warrant that this design will meet the specifications, will be suitable for your application or fit for any particular purpose, or will operate in an implementation. Texas Instruments and/or its licensors do not warrant that the design is production worthy. You should completely validate and test your design implementation to confirm the system functionality for your application.

Orderable: ChangeMe in variant	Designed for: Public Release	Mod. Date: 8/13/2021
TID #: N/A	Project Title: Change in menu Project	Project Options/Parameter
Number: PMP22650	Rev: E2	Sheet Title:
SVN Rev: bd3c2838ab76aaa905589a666179230f001	File: PMP22650 Bias Power and Monitors.SchDoc	Sheet: 9 of 16
Drawn By: Enter name of project lead	Contact: http://www.ti.com/support	Size: B
Engineer: Enter name of project lead		



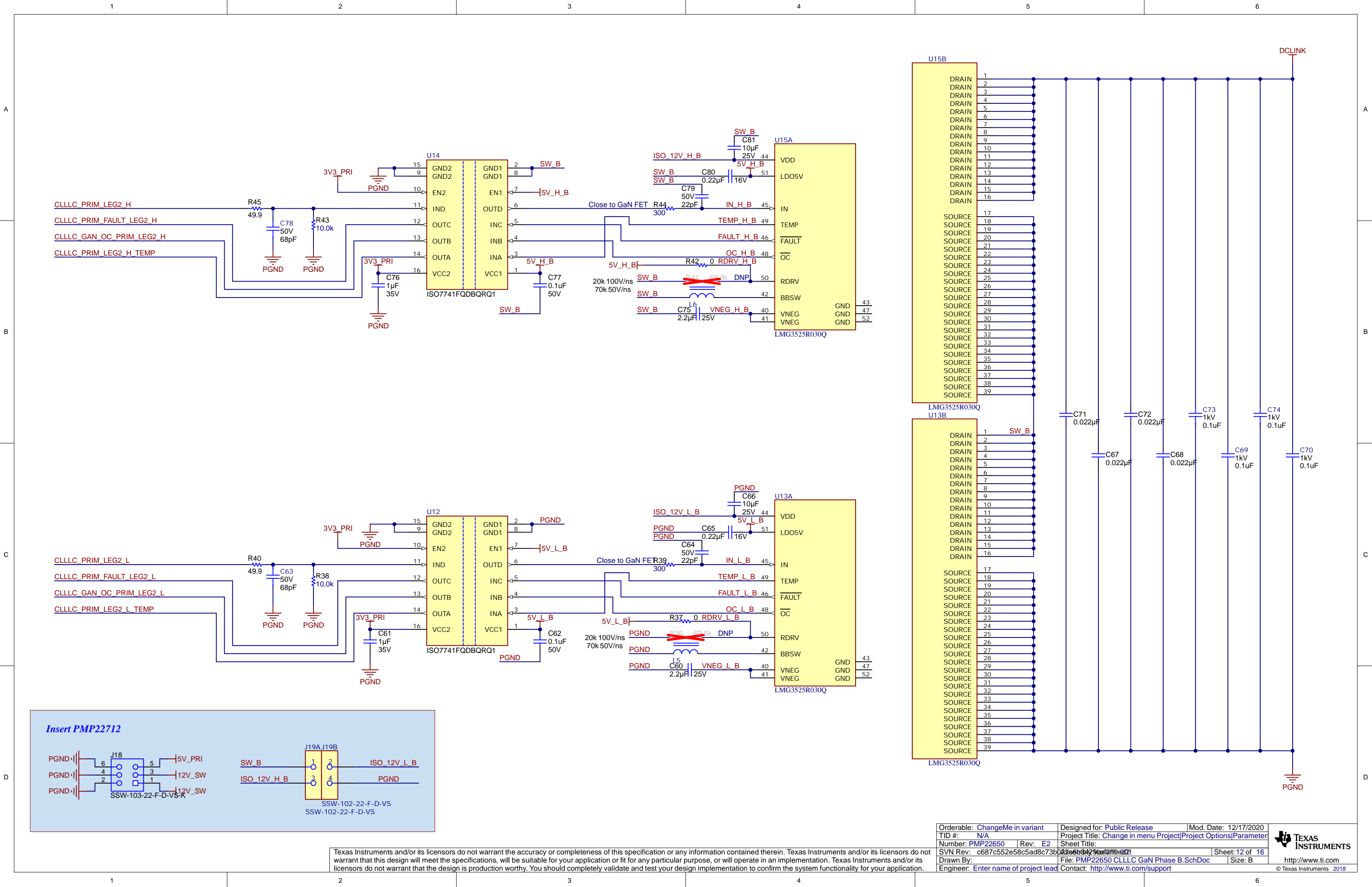
Texas Instruments and/or its licensors do not warrant the accuracy or completeness of this specification or any information contained therein. Texas Instruments and/or its licensors do not warrant that this design will meet the specifications, will be suitable for your application or fit for any particular purpose, or will operate in an implementation. Texas Instruments and/or its licensors do not warrant that the design is production worthy. You should completely validate and test your design implementation to confirm the system functionality for your application.

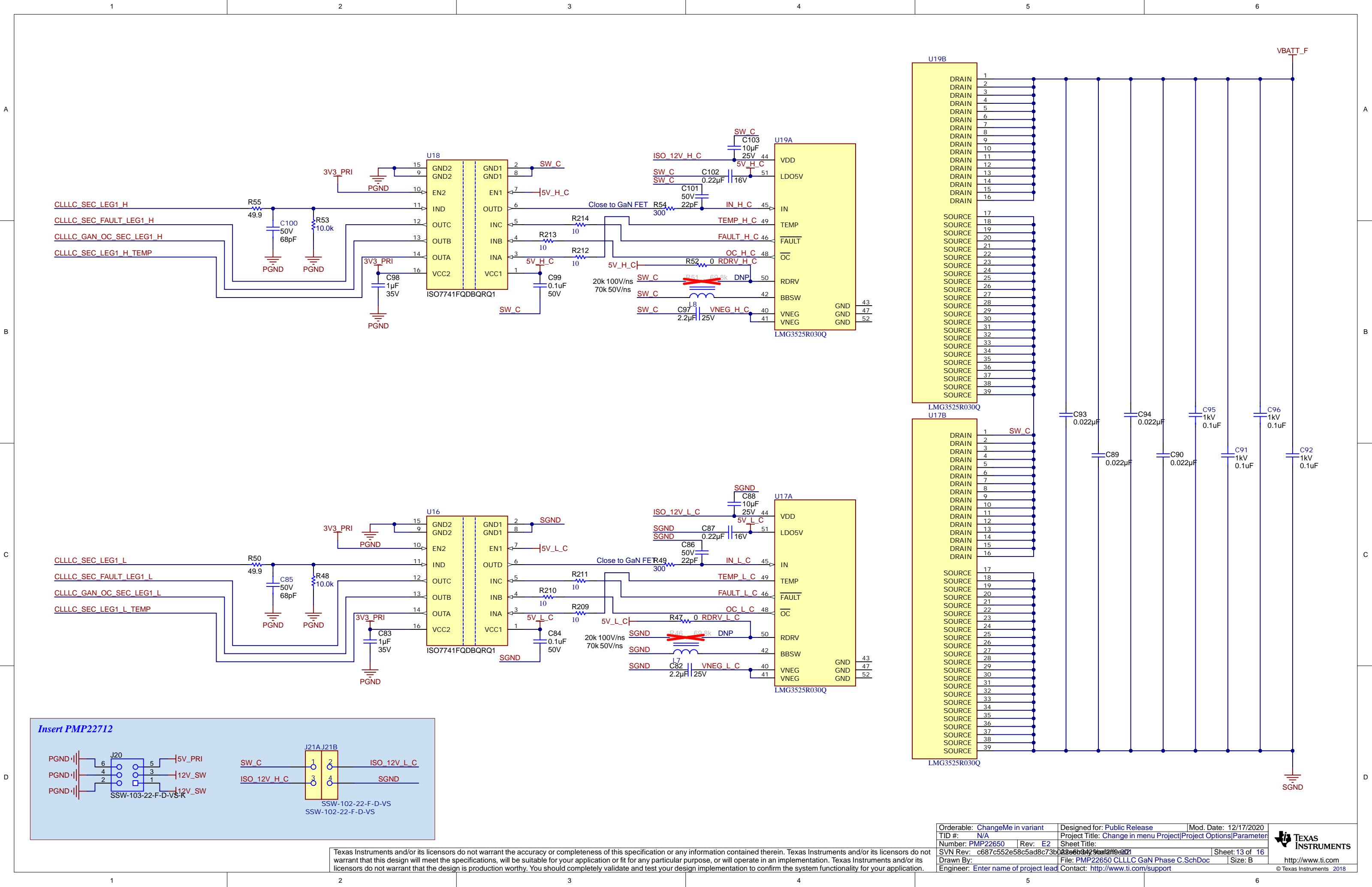
Orderable: ChangeMe in variant	Designed for: Public Release	Mod. Date: 8/13/2021
TID #: N/A	Project Title: Change in menu Project	Project Options: Parameter
Number: PMP22650	Rev: E2	Sheet Title: PMP22650
SVN Rev: e2e57d765c6c78a8f697e42e5610c78800b701	File: PMP22650 CLLC Power Stage.SchDoc	Sheet: 10 of 16
Drawn By: e2e57d765c6c78a8f697e42e5610c78800b701	Size: B	
Engineer: Enter name of project lead	Contact: http://www.ti.com/support	



Texas Instruments and/or its licensors do not warrant the accuracy or completeness of this specification or any information contained therein. Texas Instruments and/or its licensors do not warrant that this design will meet the specifications, will be suitable for your application or fit for any particular purpose, or will operate in an implementation. Texas Instruments and/or its licensors do not warrant that the design is production worthy. You should completely validate and test your design implementation to confirm the system functionality for your application.

Orderable: ChangeMe in variant	Designed for: Public Release	Mod. Date: 12/17/2020
TID #: N/A	Project Title: Change in menu Project	Project Options: Parameter
Number: PMP22650	Rev: E2	Sheet Title: PMP22650 CLLLC GaN Phase A
SVN Rev: c687c552e58c5ad8c73b0266b429ca1f0a021	File: PMP22650 CLLLC GaN Phase A.SchDoc	Sheet: 11 of 16
Drawn By: Enter name of project lead	Contact: http://www.ti.com/support	Size: B
Engineer: Enter name of project lead		

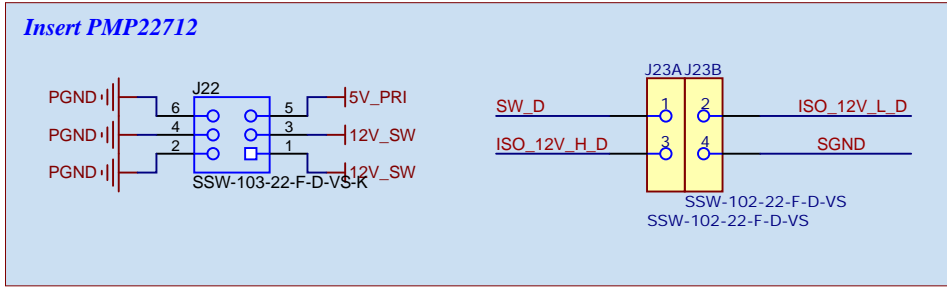
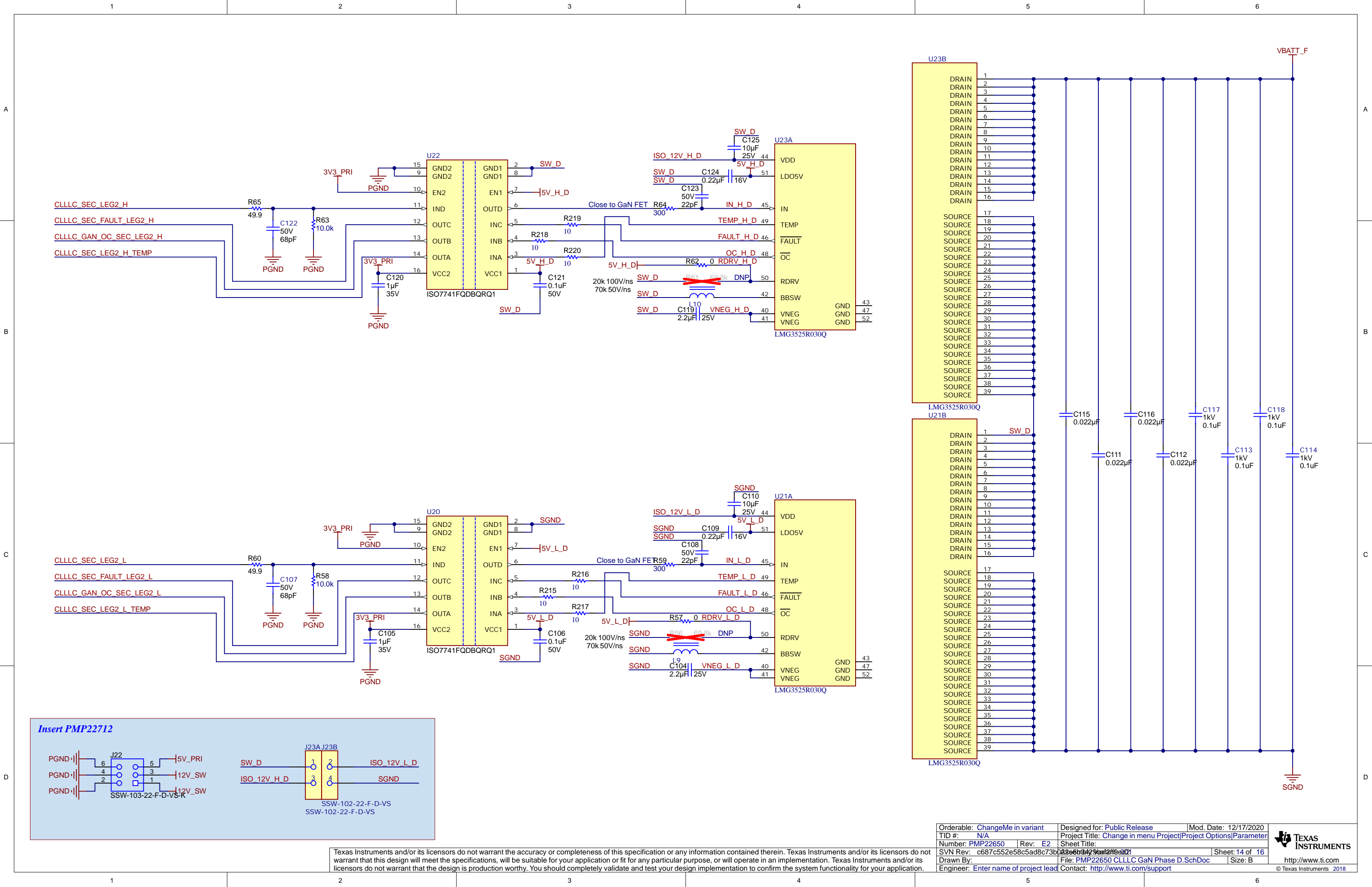




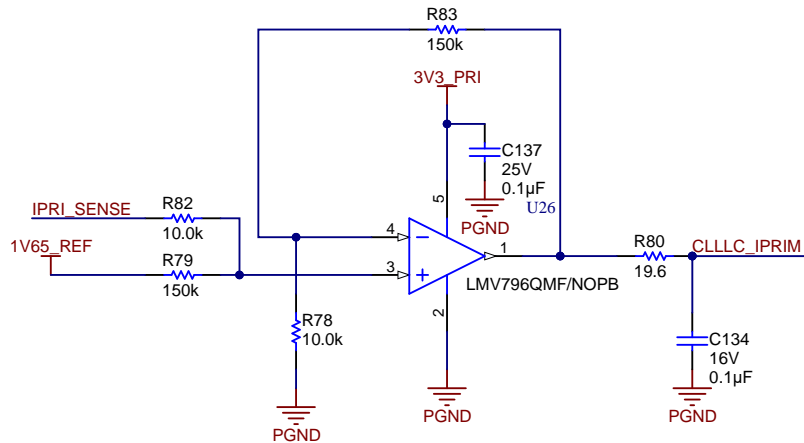
Orderable: ChangeMe in variant	Designed for: Public Release	Mod. Date: 12/17/2020
TID #: N/A	Project Title: Change in menu Project	Project Options: Parameter
Number: PMP22650	Rev: E2	Sheet Title: PMP22650 CLLLC GaN Phase C
SVN Rev: c687c552e58c5ad8c73b0266b429ca1f0a02	File: PMP22650 CLLLC GaN Phase C.SchDoc	Sheet: 13 of 16
Drawn By: Enter name of project lead	Contact: http://www.ti.com/support	Size: B
Engineer: Enter name of project lead		

Texas Instruments and/or its licensors do not warrant the accuracy or completeness of this specification or any information contained therein. Texas Instruments and/or its licensors do not warrant that this design will meet the specifications, will be suitable for your application or fit for any particular purpose, or will operate in an implementation. Texas Instruments and/or its licensors do not warrant that the design is production worthy. You should completely validate and test your design implementation to confirm the system functionality for your application.

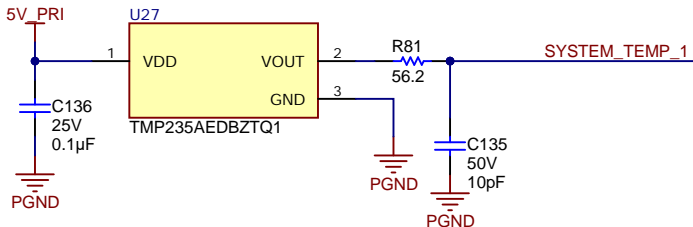




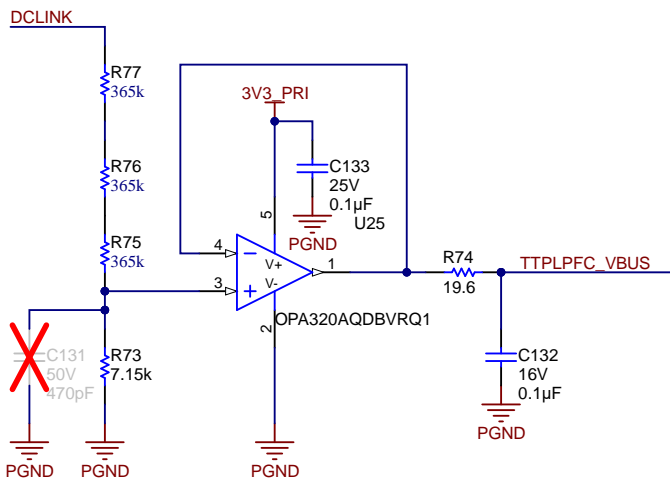
A



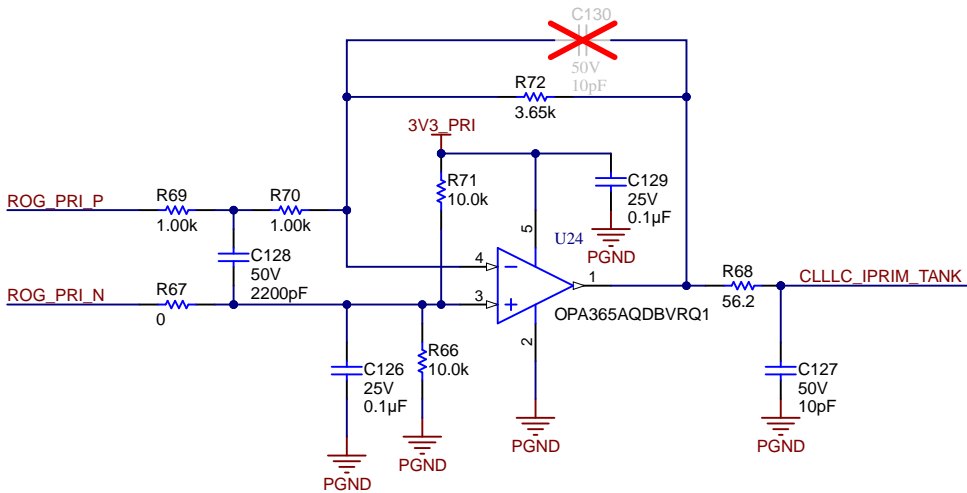
Place near transformer.



B



C



D

